

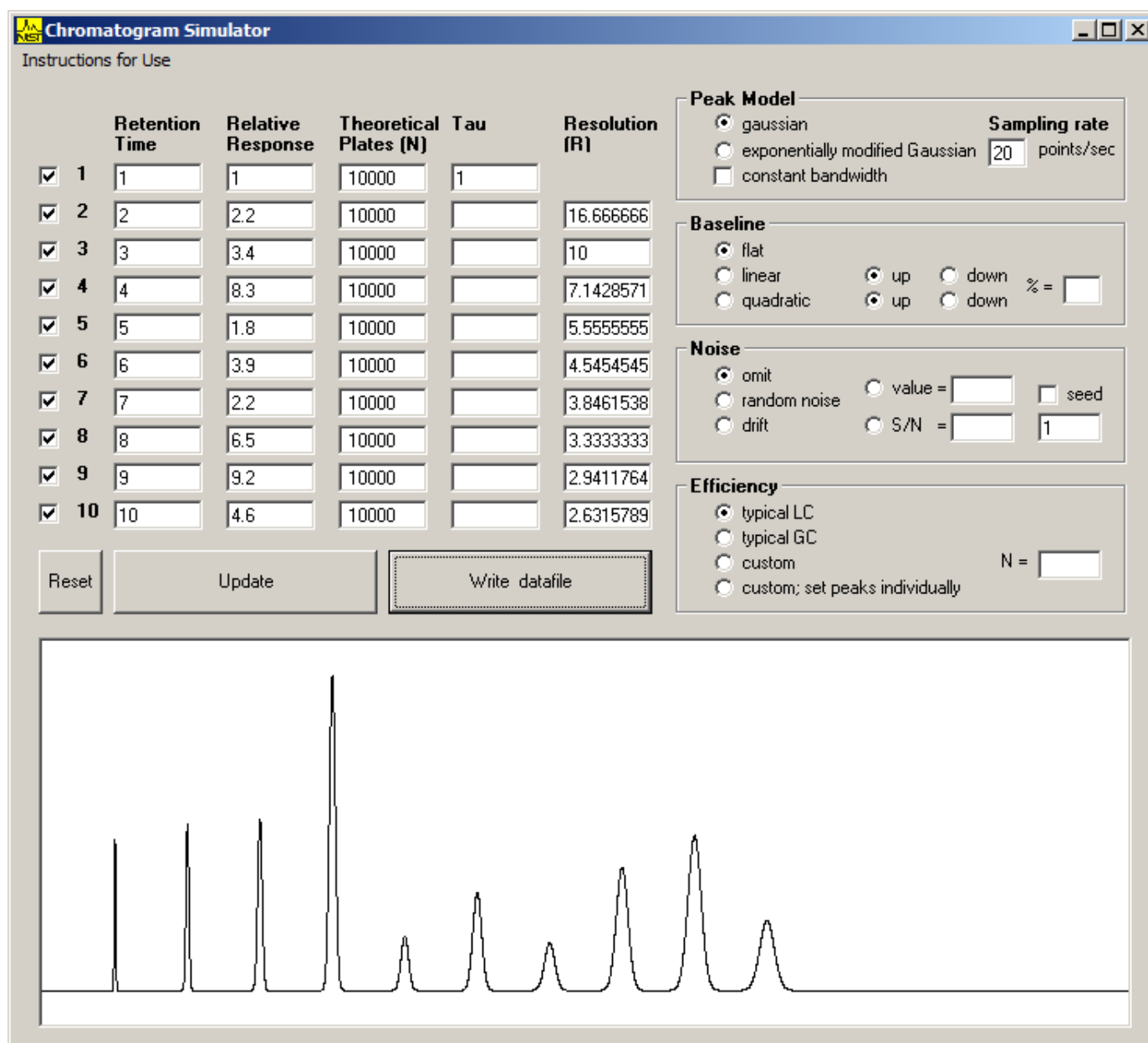
Sample Set 1

Files in this set were generated using retention times and peak areas listed in the tables below. Components are fully resolved. Simulations were generated using a sampling rate of 20 points/sec and efficiency of N= 10000. No noise or baseline treatments were applied.

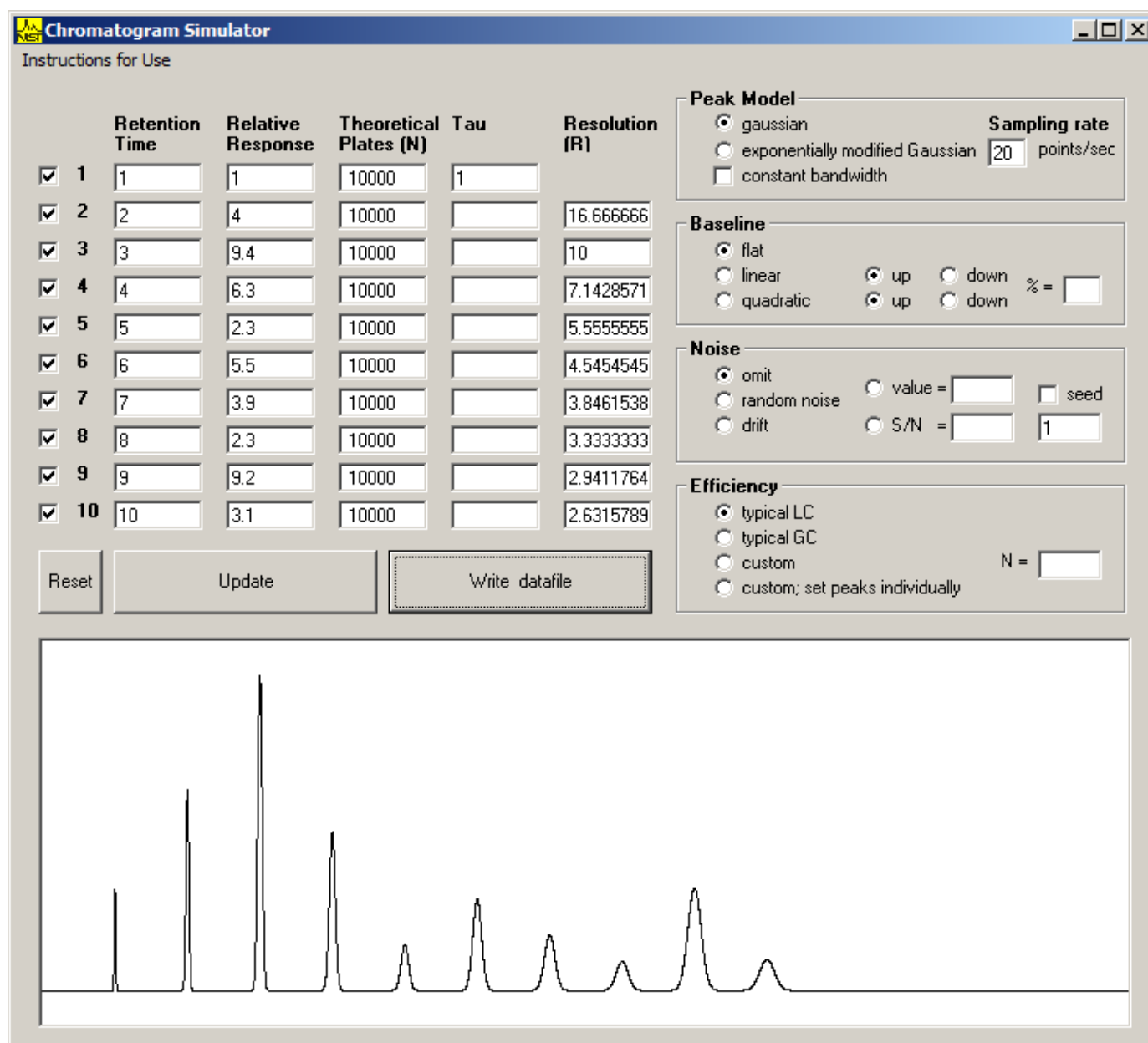
Component and Sample Identification

Peak ID	Time	sample 1	sample 2	sample 3	sample 4	sample 5	sample 6	sample 7	sample 8	sample 9	sample 10
	min	area	area	area	area	area	area	area	area	area	area
IS	1	1	1	1	1	1	1	1	1	1	1
peak 2	2	2.2	6.3	4	1.1	2.9	8.2	3.3	5.4	8.8	0.5
peak 3	3	3.4	3.4	9.4	2.6	7.3	3.3	4.7	8.2	3.8	5.2
peak 4	4	8.3	9.3	6.3	5.3	4.4	4.2	1.2	5.8	0.5	3.1
peak 5	5	1.8	4.7	2.3	9.1	5.2	7.2	2.1	3.8	7.2	8.2
peak 6	6	3.9	3.7	5.5	3.9	1.9	7.3	6.3	5.5	1.1	6.6
peak 7	7	2.2	9.3	3.9	2.5	3.1	6.3	4.3	9.3	4.1	0.8
peak 8	8	6.5	4.7	2.3	8.5	7.7	4.9	1.1	6.2	3.8	4.9
peak 9	9	9.2	1.2	9.2	8.3	3.4	2.7	9.3	9.3	3.4	9.2
peak 10	10	4.6	4.9	3.1	5.3	8.3	3.4	8.6	5.5	0.7	5.8

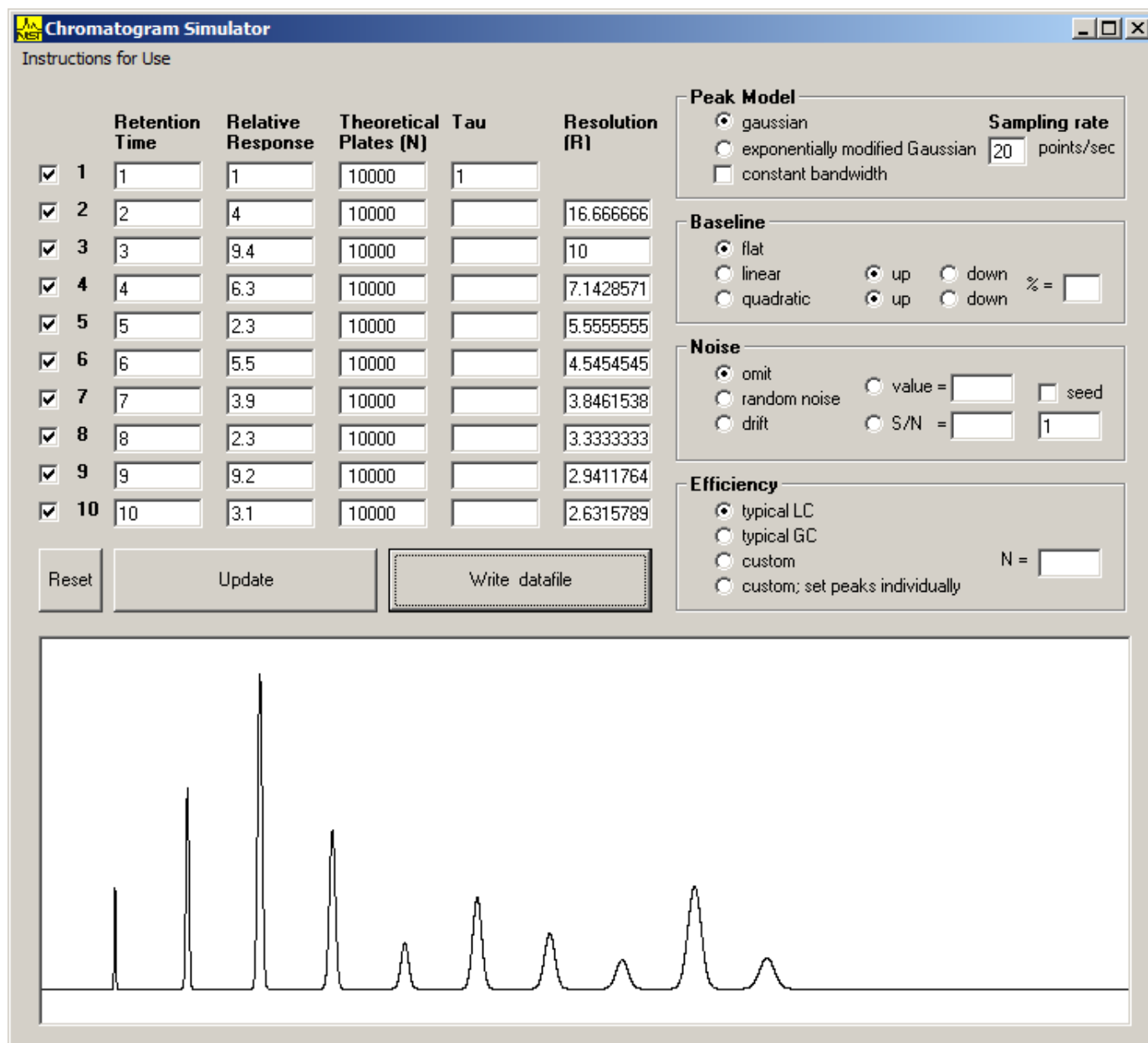
Sample1



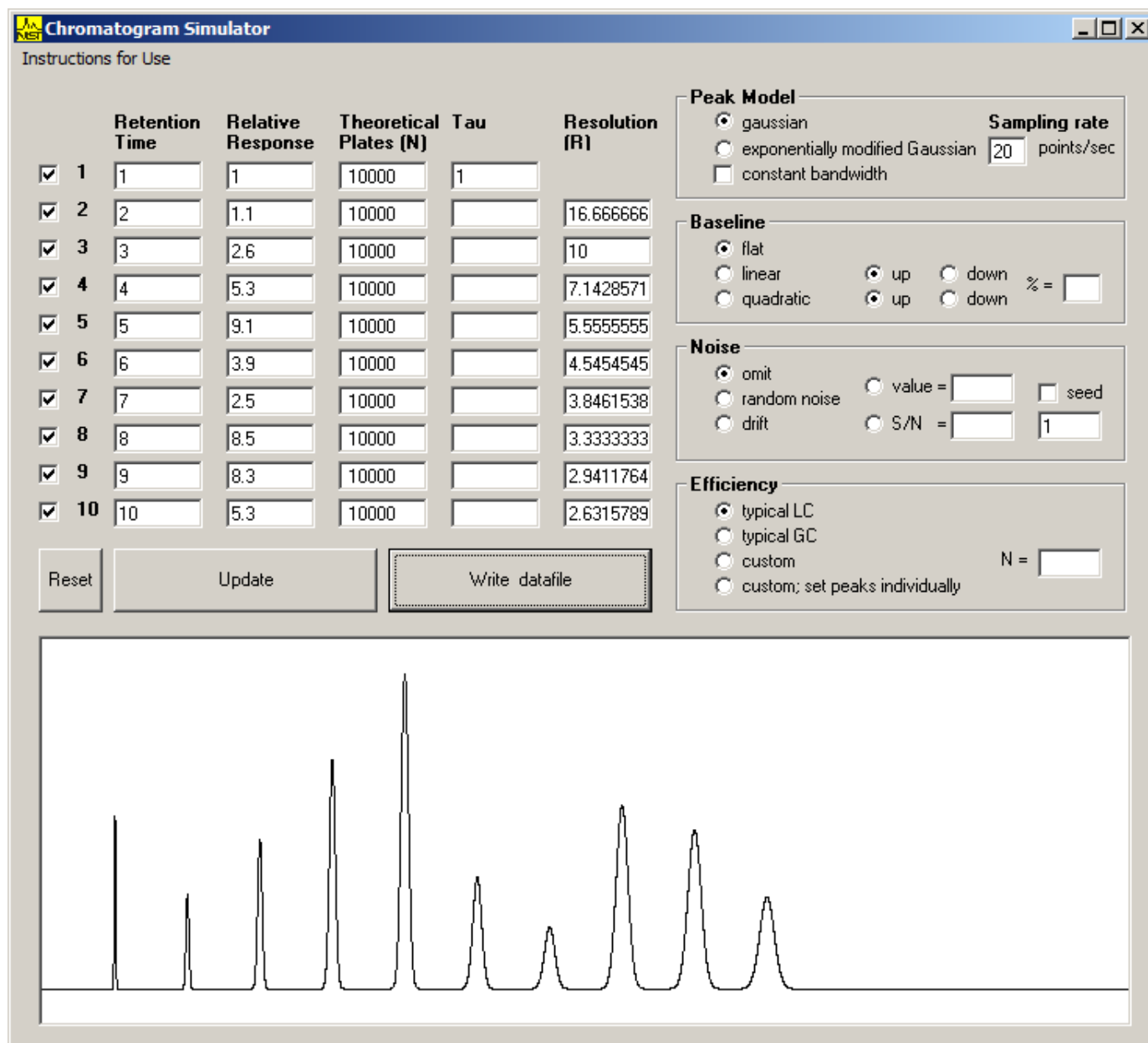
Sample 2



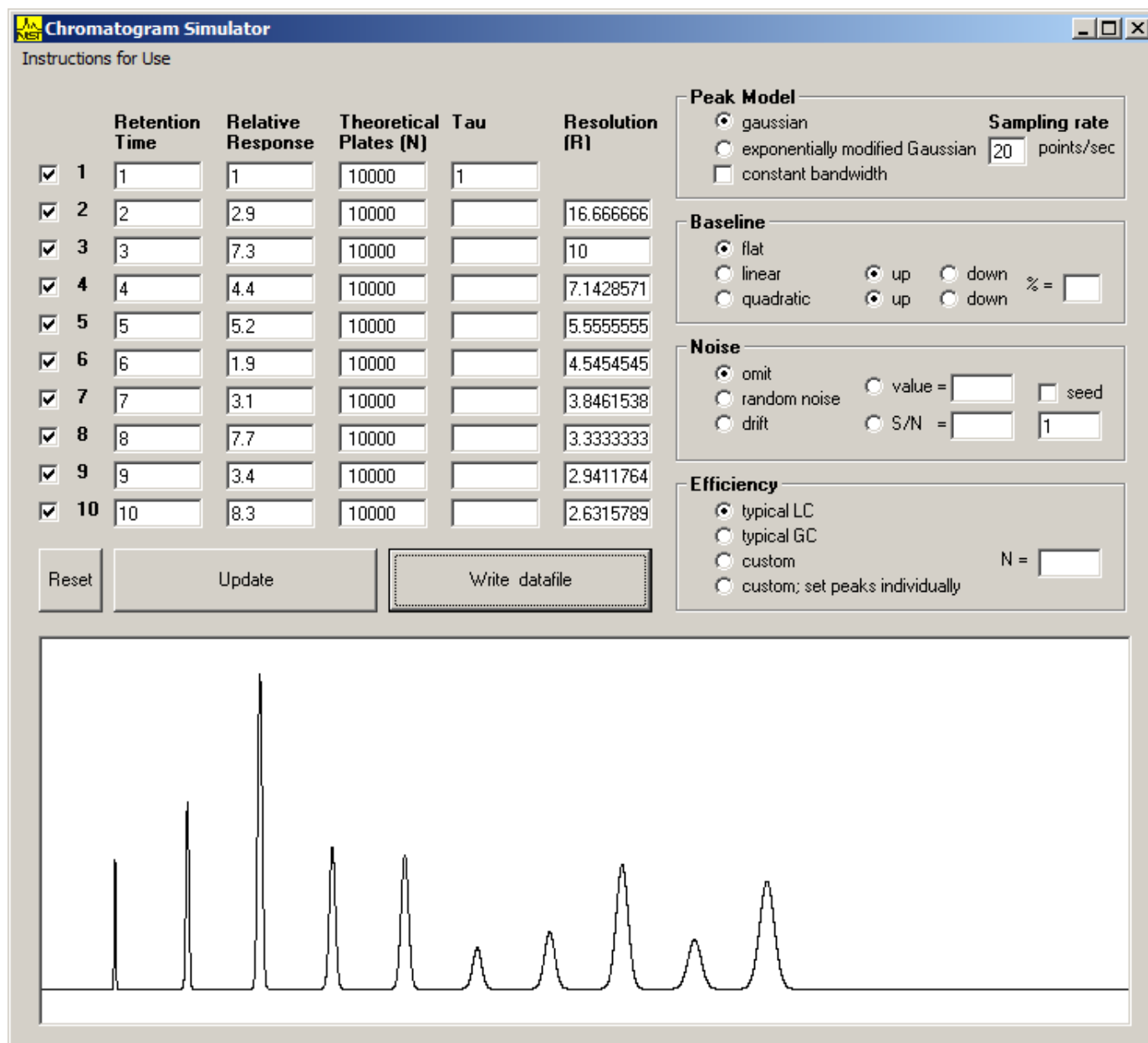
Sample 3



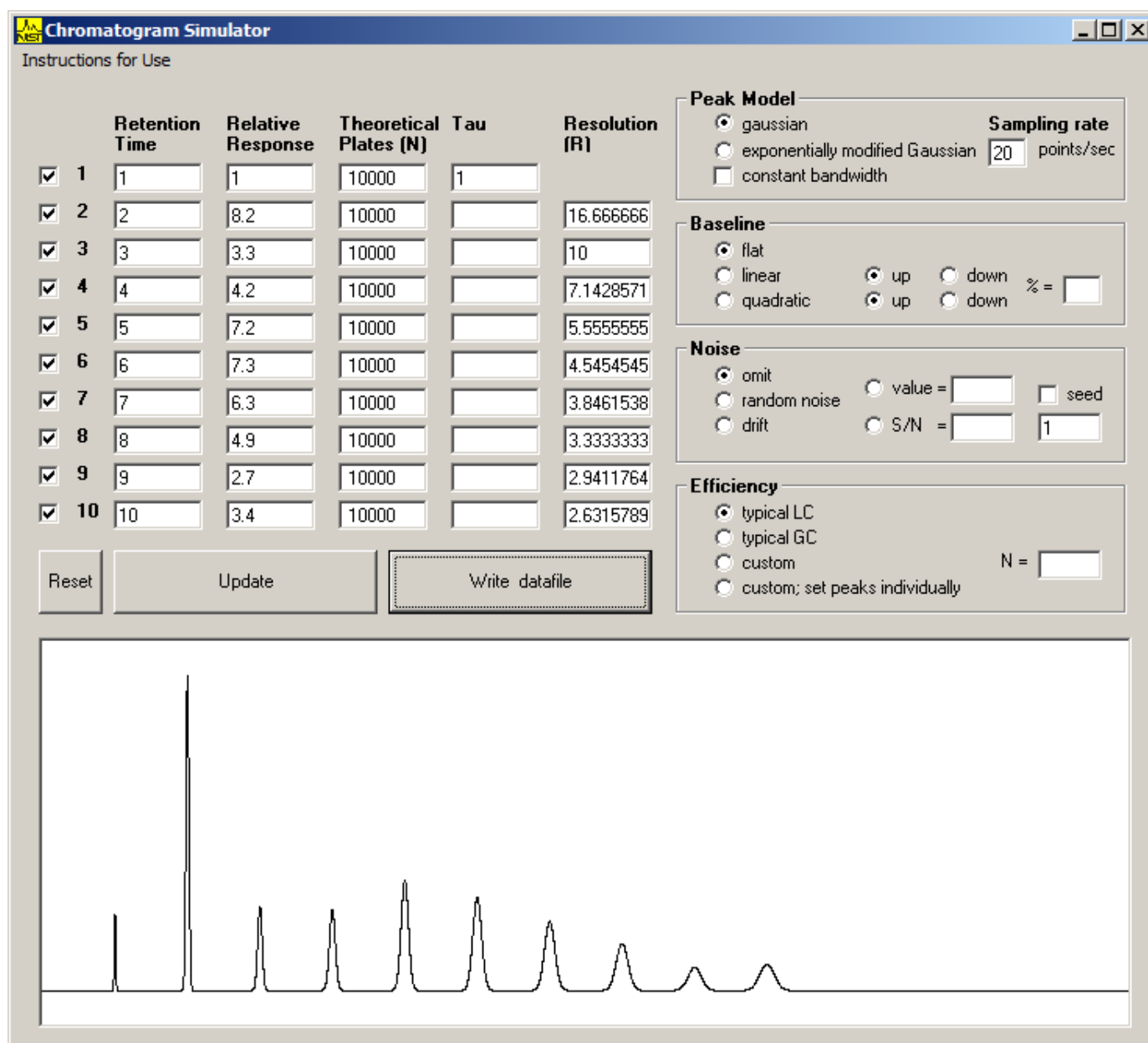
Sample 4



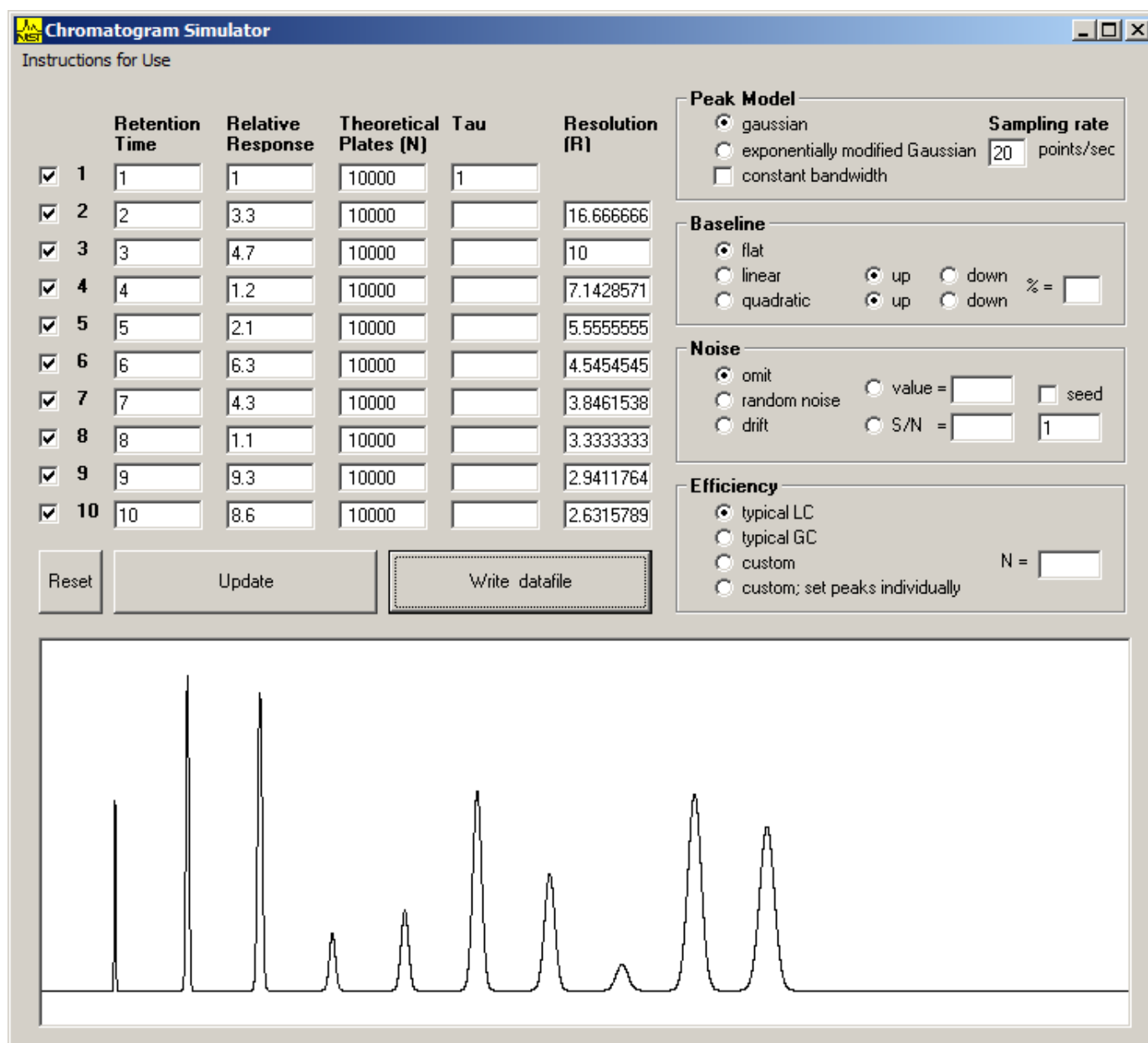
Sample 5



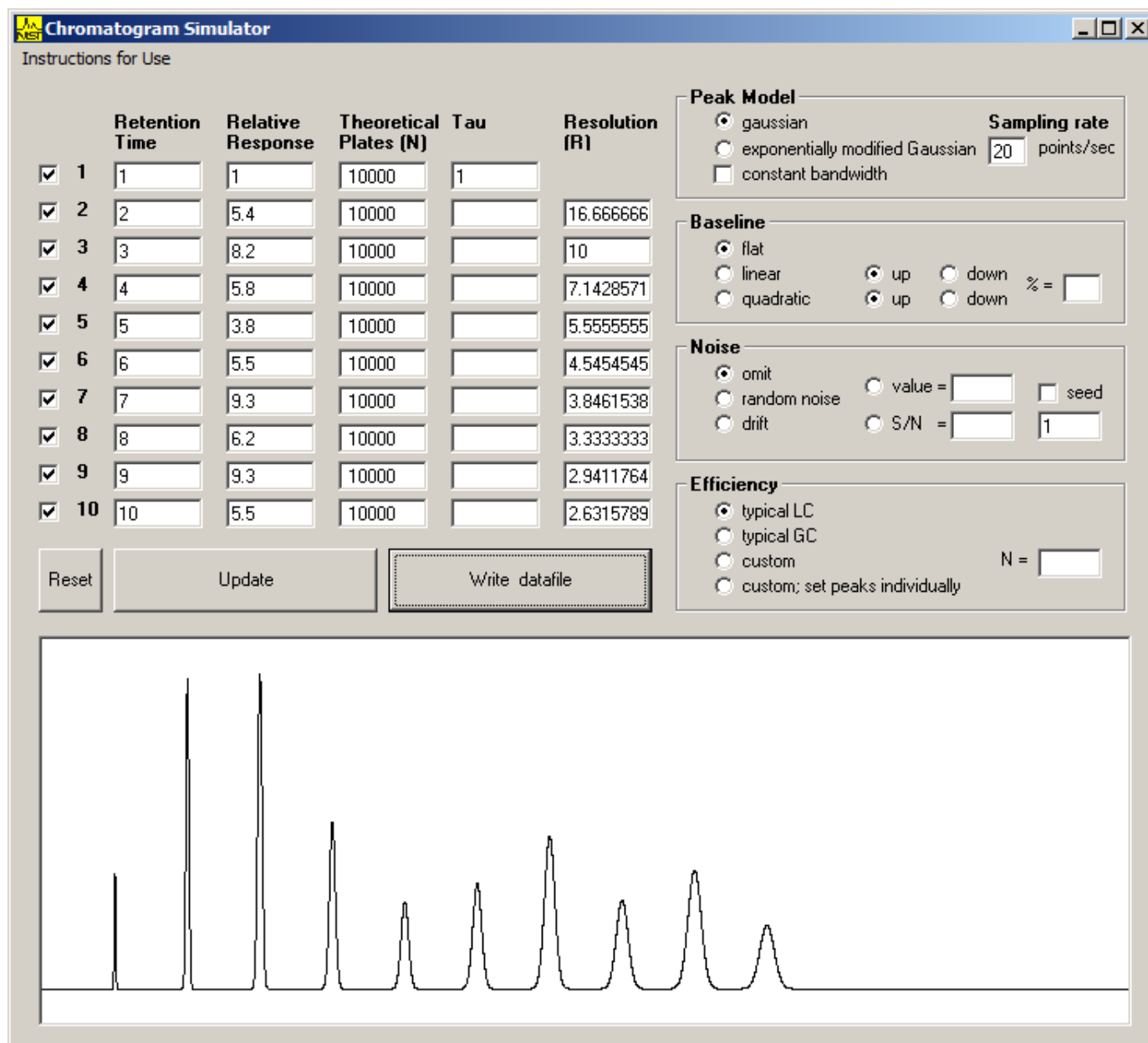
Sample 6



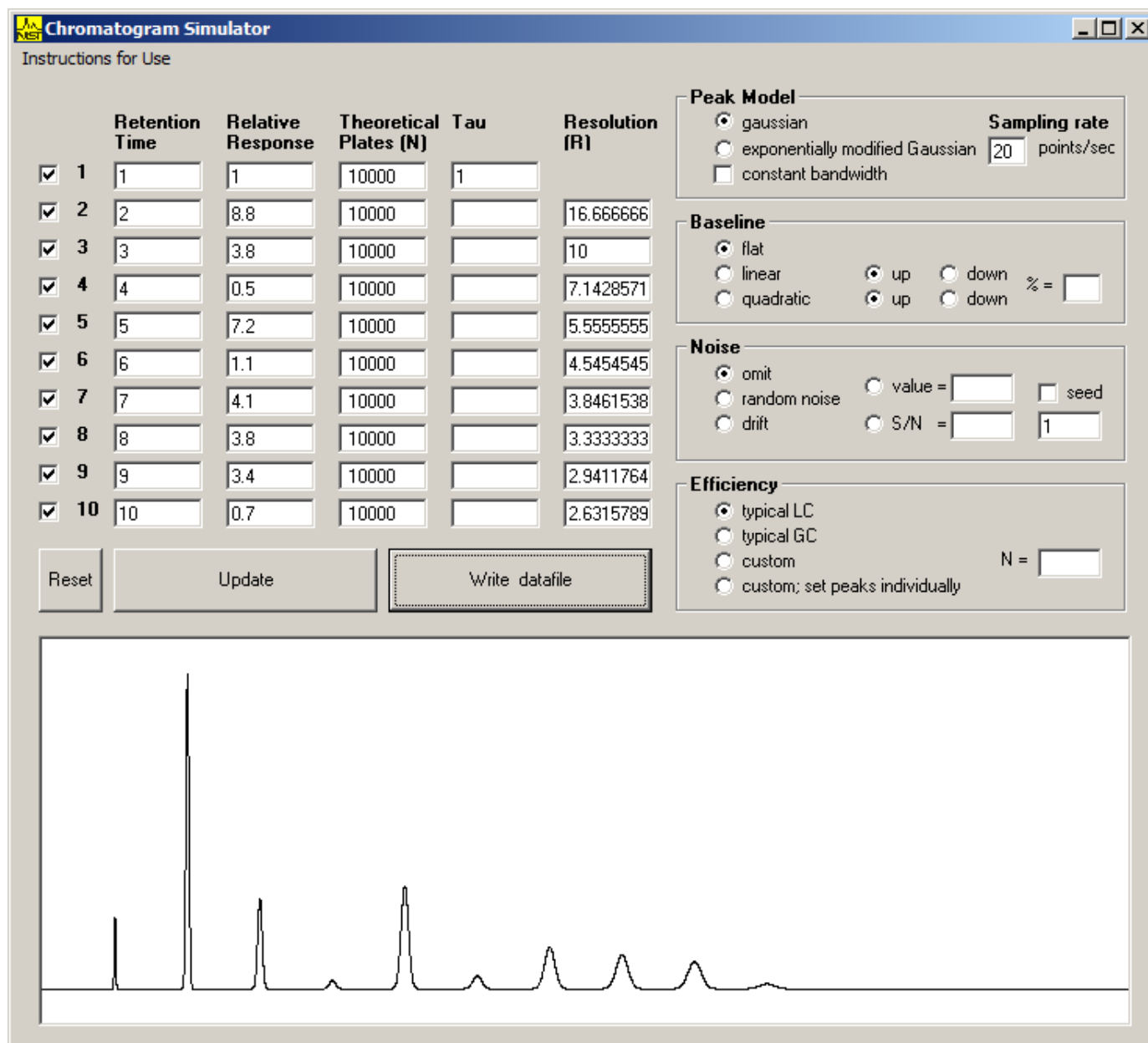
Sample 7



Sample 8



Sample 9



Sample 10

