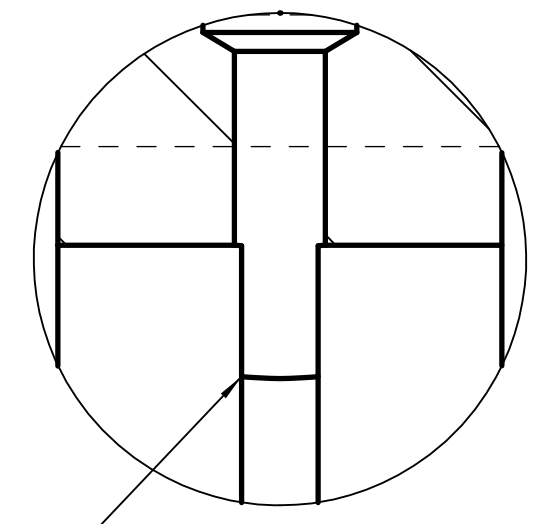
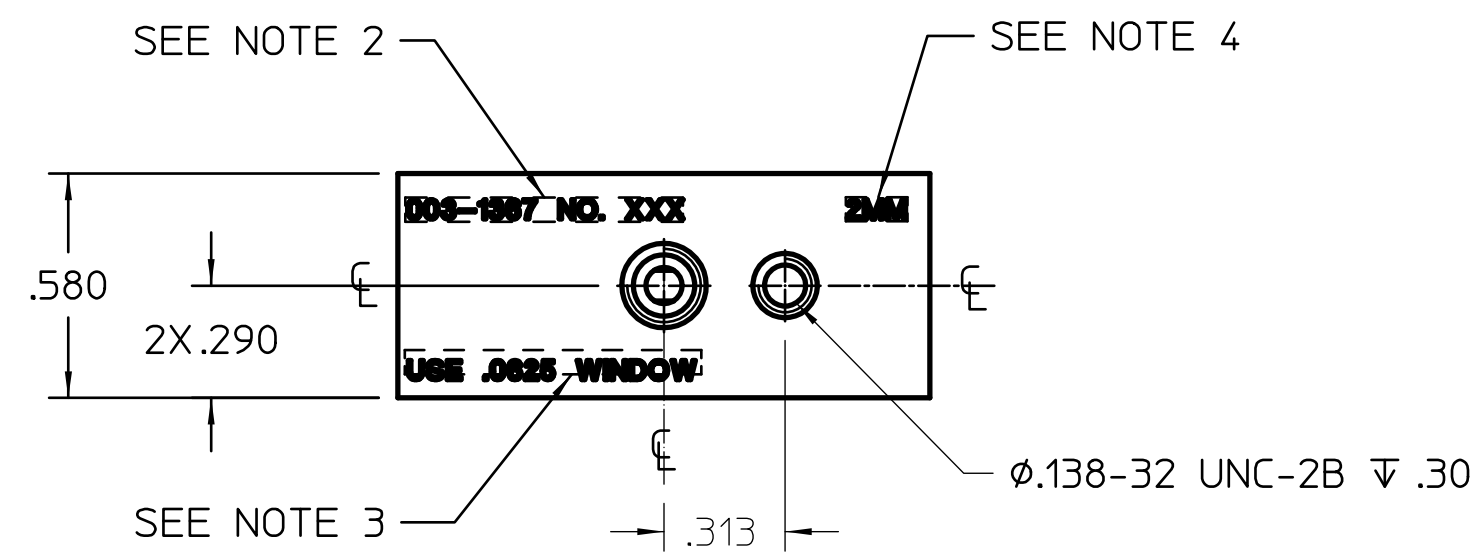
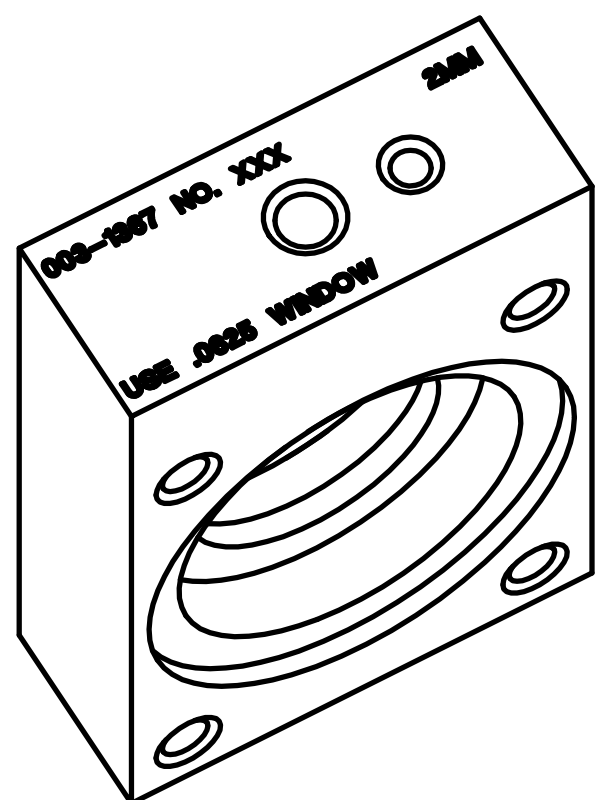
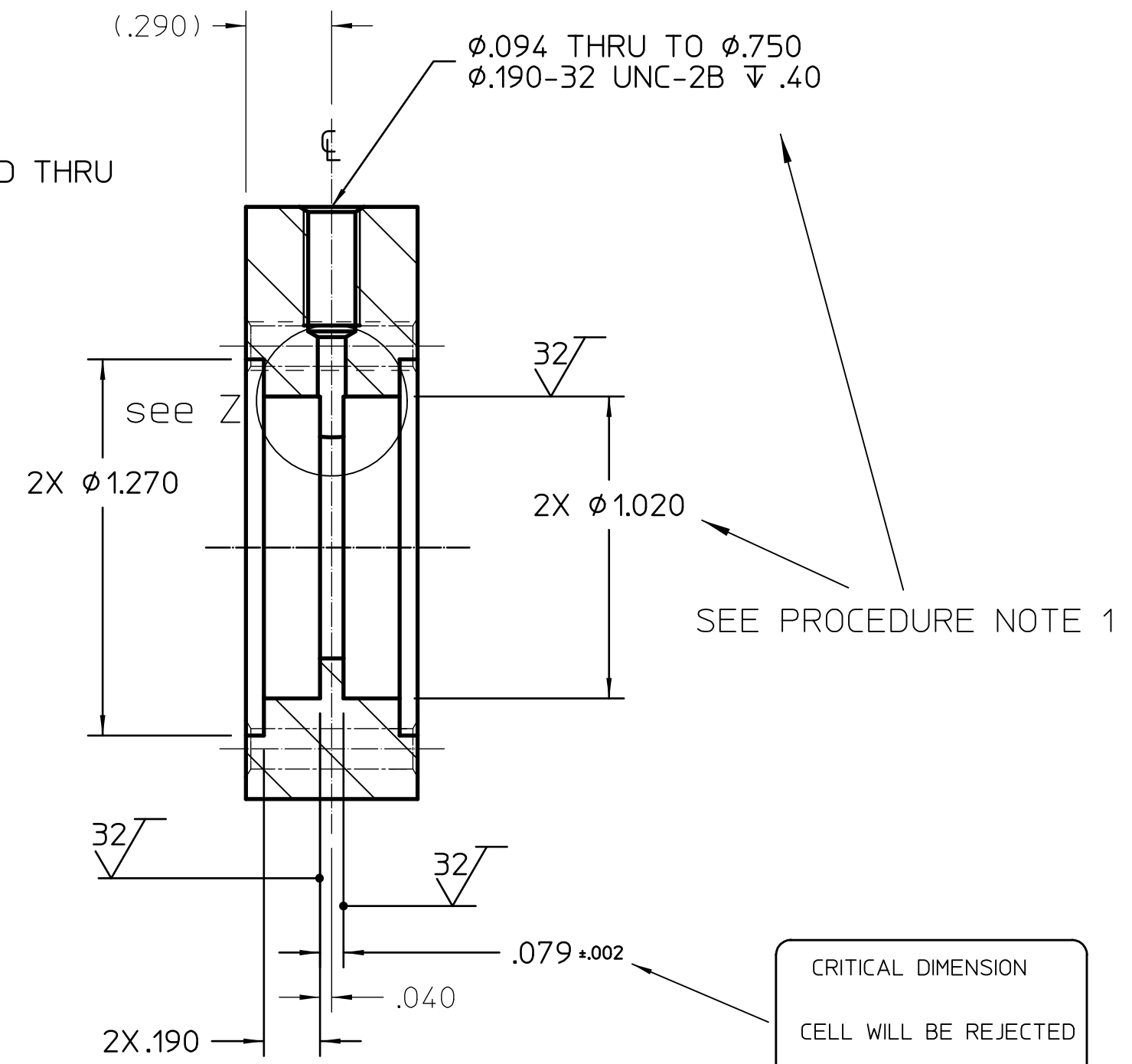
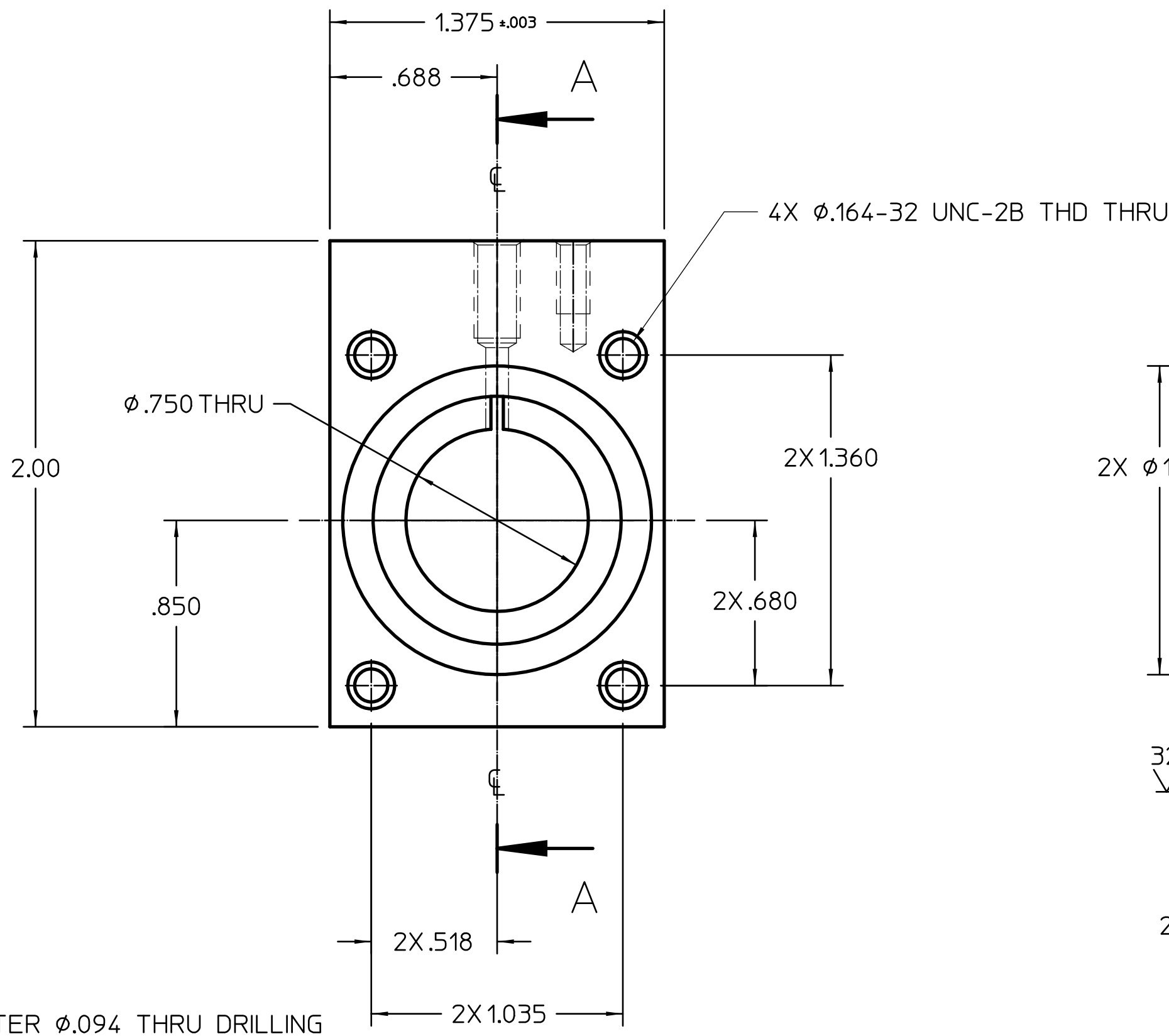


| REVISIONS |      |     |   |          |
|-----------|------|-----|---|----------|
| No.       | ZONE | ECN | CHANGE                                      | DATE     |
| 2         | A/B1 |     | ADDED PROCEDURE AND CRITICAL DIMENSION NOTE | 12/12/18 |



MAKE SURE NO  
BURS 2X ALL AROUND

SCALE 5:1



SECTION A-A

PROCEDURE NOTES:  
1. PERFORM MACHINING OF 2XØ1.020 AFTER Ø.094 THRU DRILLING

- NOTES:
- BREAK ALL SHARP EDGS .005 TO .015
  - STEEL STAMP, SCRIBE, OR ETCH "003-1367 NO." FOLLOWED BY A SEQUENTIAL NUMBER ON EACH BODY USING INCREMENTS OF 1 STARTING WITH THE NUMBER "N". (REFERENCE ORDER FOR VALUE OF "N") AND ENDING WITH ["N" + QUANTITY ORDERED -1] ie: (FOR "N"=1) NO. 1, NO. 2, NO. 3 ... USING .12 HIGH CHARACTERS LOCATED APPROX WHERE SHOWN.
  - STEEL STAMP, SCRIBE, OR ETCH "USE .0625 WINDOW" USING .12 HIGH CHARACTERS LOCATED APPROX WHERE SHOWN.
  - STEEL STAMP, SCRIBE, OR ETCH "2 MM" USING .12 HIGH CHARACTERS LOCATED APPROX WHERE SHOWN.
  - USE WITH RETIANING PLATE 003-1320 AND O-RING AS568A DASH NUMBER 117.

|                                       |                          |                          |                          |   |              |  |                     |                             |  |
|---------------------------------------|--------------------------|--------------------------|--------------------------|---|--------------|--|---------------------|-----------------------------|--|
| MATERIAL SPECIFICATION                |                          | APPROVALS                |                          | UNLESS OTHERWISE SPECIFIED DIMENSIONS ARE IN INCHES TOLERANCES ARE: |              | NIST   |                     | CENTER FOR NEUTRON RESEARCH |  |
| MATERIAL<br>TITANIUM, GRADE 2, R50400 | ENGR                     | ENGR                     | DATE                     | DECIMALS .XXX ±.005 FRACTIONS .XX ±.01                              |              | National Institute of Standards and Technology         |                     | 100 BUREAU DRIVE            |  |
| FORM<br>BAR                           | ENGR MNGR                | ENGR                     | DATE                     | ANGLES ±5   |              | Technology Administration, U.S. Department of Commerce |                     | GAITHERSBURG, MD. 20899     |  |
| MODEL DATA                            |                          | DRAWING DATA             |                          | DO NOT SCALE DRAWING  |              | 2mm CELL BODY  |                     |                             |  |
| MODEL NAME<br>cq_2mmcell_body         | STATE<br>work            | DATE<br>12/12/18 4:27 PM | DATE<br>12/12/18 4:27 PM | THIRD ANGLE PROJECTION  |              | FOR  |                     |                             |  |
| CREATOR<br>allen                      | DATE<br>2/6/06 3:49 PM   | VERSION<br>2             | SHEETS<br>1              |   |              | SIZE<br>C  | DWG No.<br>003-1367 | REV<br>2                    |  |
| DRAFTER<br>cedric                     | DATE<br>12/12/18 4:27 PM | ENGINEER<br>allen        | DATE<br>12/12/18 4:34 PM | SCALE<br>2:1  | RELEASE DATE | SHEET<br>1 of 1  |                     |                             |  |
| LAST UPDATE BY<br>cedric              | DATE<br>12/12/18 4:34 PM | PHONE #                  |                          | CALC. WT.   | ACT. WT.     | DIM. & TOL. PER ANSI Y14.5M-1982                       |                     |                             |  |