

The background is a dark grey chalkboard with various white chalk sketches. On the left, there's a large drawing of a microscope. Above it, a globe of the Earth is sketched. In the bottom right, there are sketches of a percentage sign, an exclamation point, and some geometric shapes. The overall theme is scientific and analytical.

The Role of Citizens:

A Whole Community Approach to Recovery Data and Vision
Jane Cage – Joplin, Missouri



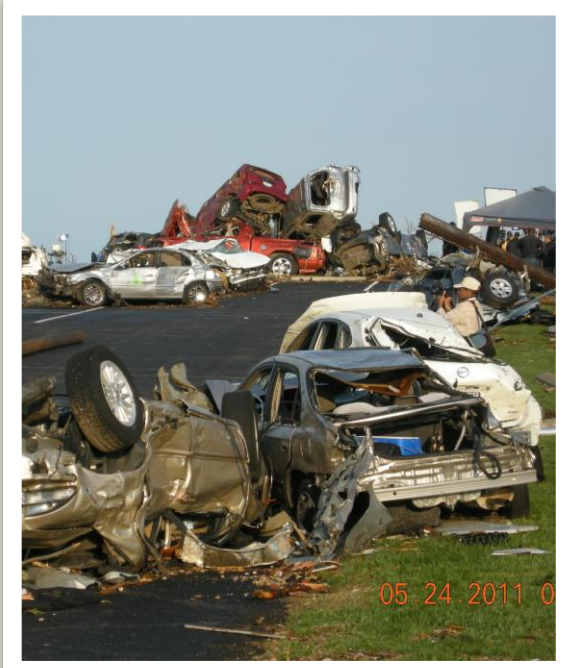
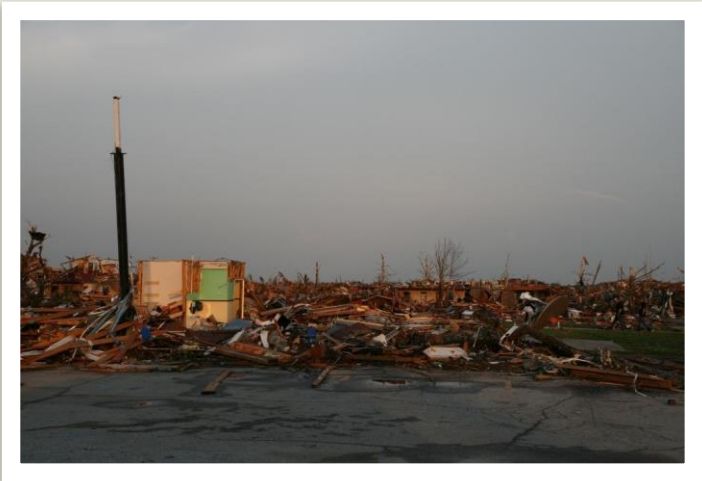
JOPLIN

- Located in SW Missouri
- 50,000 population
- Major employers – School Systems, Hospitals, Transportation

- 7500 structures damaged, 4000 of those destroyed
- 9,000 people displaced
- 18,000 cars destroyed
- 531 businesses damaged or destroyed
- City Infrastructure - 2 Fire Stations, 5 City Parks Damaged, 2000 street signs, 17 stop light intersections, 30 manhole covers
- Over 10,000 trees lost
- 1,300 lost pets sheltered
- School Losses – Administration Building, High School, Technical School, Middle School and 3 Elementary Schools Destroyed
- 3 million cubic yards of debris
- \$2.8 Billion in damages, worst tornado since 1950
- 161 deaths



MAY 22, 2011



All disasters begin and end locally...

Disaster recovery is only two things, **Communication and Decision Making**.

Communication is not the dissemination of a decision, but the effort and inclusion of the appropriate people and organizations to make the right decision. ... In order to make good decisions, leaders must be able to understand who is part of the decision, who can provide supporting information, who can support the decision, and who can carry the message of the decision.

Ultimately all things come down to decisions... Decisions don't have to be perfect, therefore **the process used for a decision is as important as the decision**. After all, even when a decision is made it needs to be carried out and that takes partners and resources throughout the community. **If your partners and resources are affected by a decision yet don't have some ownership of it, the likelihood of successful completion diminishes greatly**

-Steve Castaner, former FEMA VII Long-Term Recovery





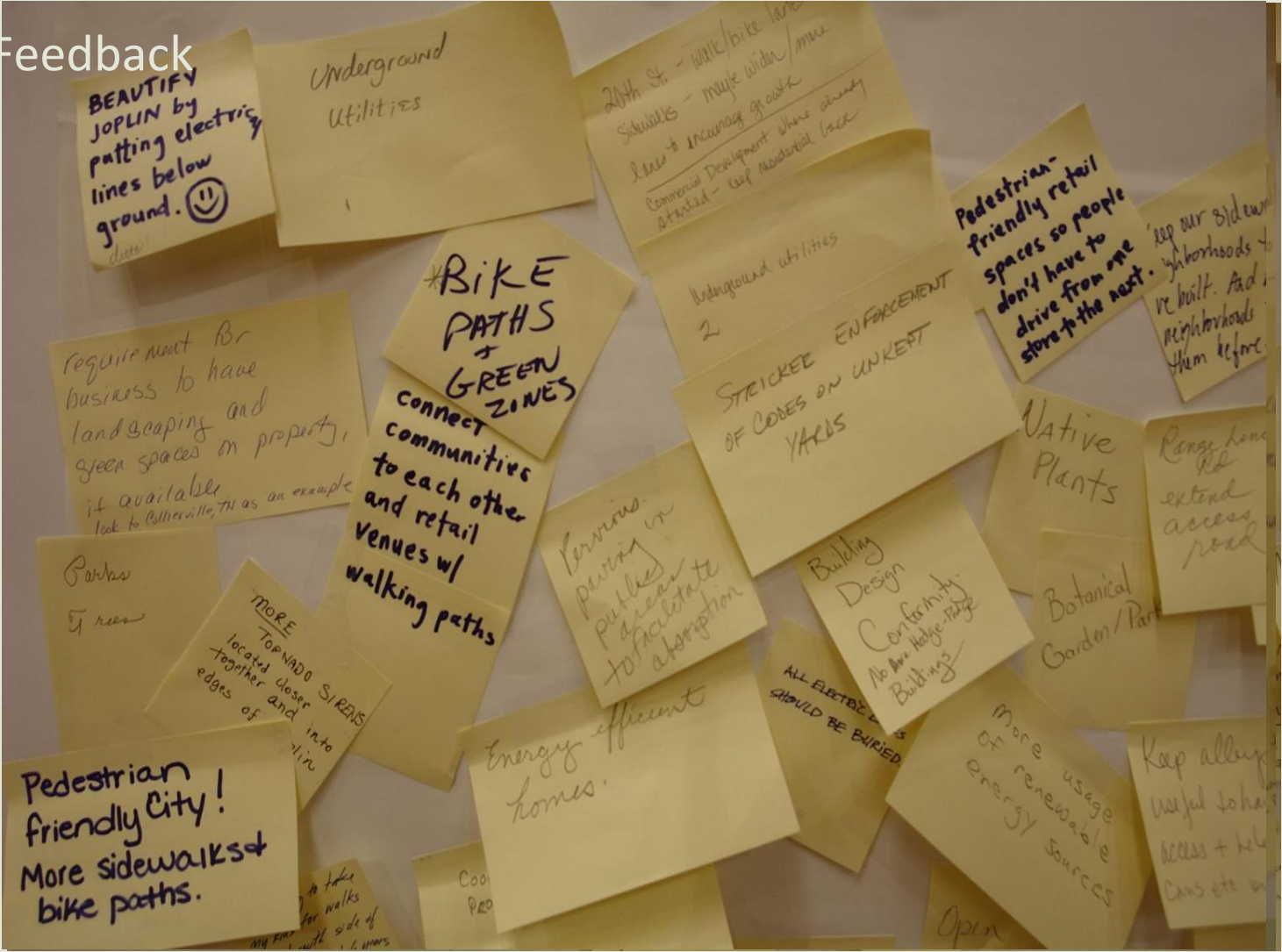
Citizens Lead Joplin's Long-Term Recovery

A whole community effort supported by FEMA
LTCR

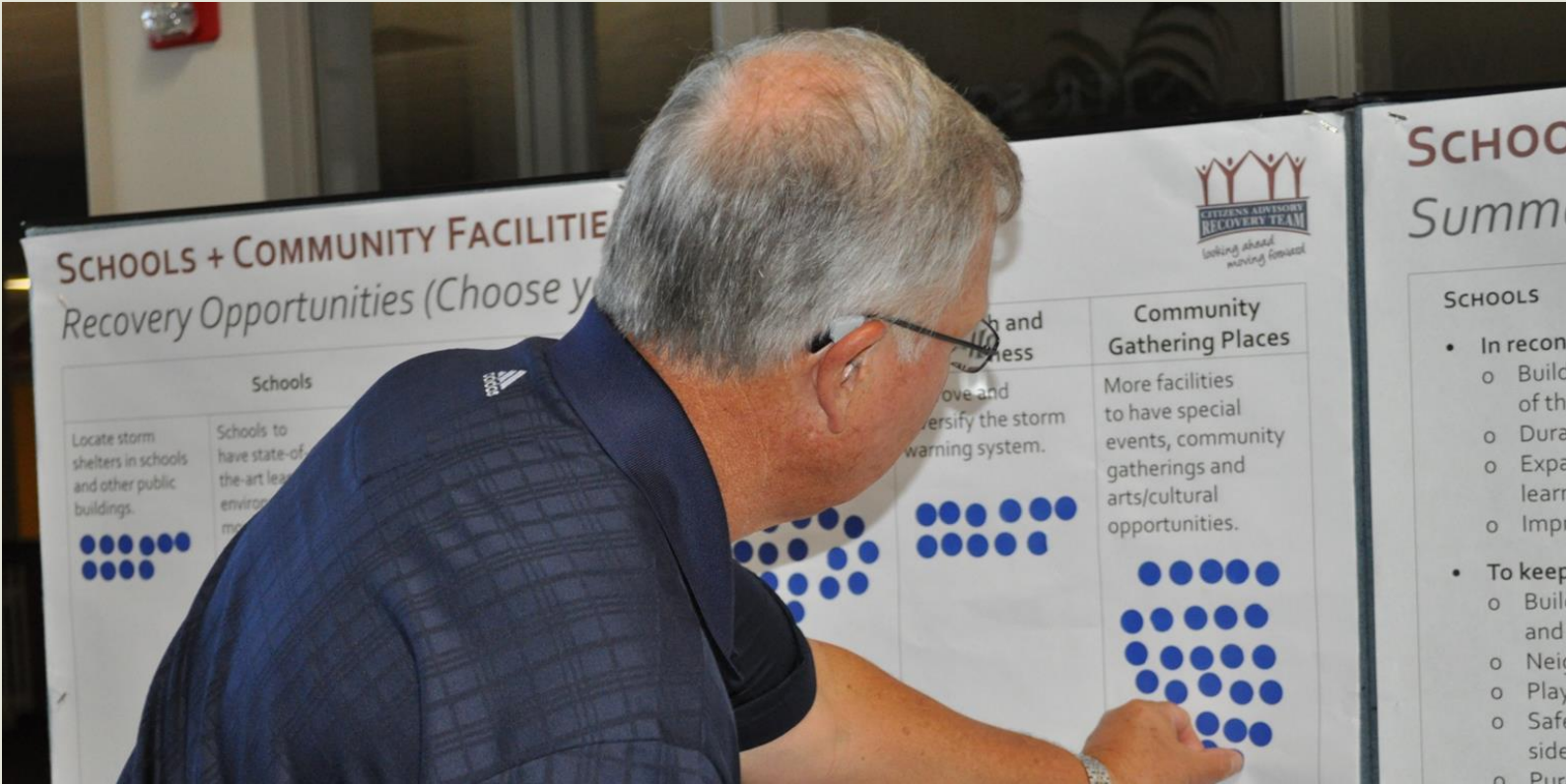
First Public Input Meeting – HOPE



Feedback



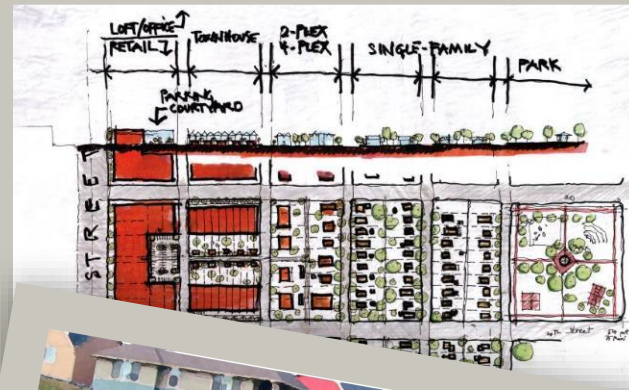
Second Public Input Meeting - Empowerment



Decision Making Tool Workshop - FOCUS



The Design Charette – CLARITY



Compiling and Presenting the Results - DIRECTIONS



Listening to Joplin

Report of the Citizens Advisory Recovery Team



Listening to Joplin - Next Steps

Report of the Citizens Advisory Recovery Team
Implementation Task Force



- Prioritization of Needs
- Became the “Sears Catalog” for Federal/State Agencies and the Community
 - How could we spend within the guidelines of agencies?
 - Who should we ask for what?
- Became the basis for the update of our comprehensive plan.
- Helped craft the strategy to spend our CDBG-DR allocation
- Referenced even today as the source of programs, improvements
- Updated in 2017 with a new vision by citizens group

The background features a dark grey, chalkboard-like texture with various white line-drawn icons. On the left, there is a large globe showing continents. Above it are a percentage sign and a ruler. To the right, there is a stack of books and a microscope. At the bottom, there are several arrows pointing in different directions and other geometric shapes.

Maintaining our Population

A Community-wide priority

HOUSING AND NEIGHBORHOODS

Housing Task Force - CART, City, State, Realtors, Builders Association, Non-Profits

- Addressing Gaps in Move from Temporary to Permanent Housing
 - Ensure the needed services were available to re-house the families living in the THU's in accordance with the hard deadline for removal that the city set.
 - The group tracked the buying and selling of lots and shaped policy around needs in almost real time
- Planning Strategies:
 - City developed a new land use plan and created set backs from RR (noise abatement), 20th (commercial development) and Main (commercial development)
 - New code requirements to mitigate wind damage - roof tie downs, foundation strapping
- Housing Assistance Programs
 - A set aside by the Governor of LIHTC credits for the development of affordable housing needed to replace what was lost.
 - Incentives in the form of tax credits for builders to build single family detached housing for homeownership
 - A down payment assistance and closing cost program sponsored by the city
 - Coordination with the NGO's for rehabilitation
 - Coordination with the NGO's for new construction (ex Habitat for Humanity)
 - Legal services to resolve mortgage disputes
 - Insurance services to ensure claims

INFORMATION

(comments from a task force member)

What we knew....

- GIS mapping capabilities
 - FEMA info told us where people were
 - Realtor information told us which properties were for sale and selling
 - Permitting told us numbers of properties under construction and where
 - Demolition permits told us which properties were vacant
- Basically, through a number of data sources, we could tell a lot about what was occurring in each neighborhood and what was not occurring at all.

What we wish we had....

- Housing information is such a personal, individual choice
 - Macro – a unit of people that could focus solely on assessing and reporting housing conditions and establish strategies to identify trends; planners and mappers.
 - Micro – a unit of people with housing expertise both on the production side and the financing side. The biggest gap in disaster recovery is the lack of people that have REAL housing expertise that can help disaster survivors find housing solutions.

Our Results

- Temporary Housing:
 - Accepted temporary housing – 586 units in place by August 8, 2011
 - *As of May 6, 2013* - 574 households (98%) moved out of FEMA temporary housing and into longer term or permanent housing.
- Built on-average, one new house each day for five years
- Used CDBG-DR Funding to make over 500 low-to-moderate income families first time home owners inside of our most devastated neighborhoods
- Reached our pre-tornado population in 2015



The background is a dark grey chalkboard with various white chalk sketches. On the left, there is a large globe showing continents. Above it, there are sketches of a book, a percentage sign, and a ruler. On the right, there is a sketch of a microscope. In the bottom right, there is a sketch of a pair of glasses. The sketches are done in a simple, hand-drawn style.

Jane Cage

jcage@insightfive22.com