

Resilient? Chester County

One community's love / hate relationship
with data, tools, and best practices



The vision of Resilient! Chester County is to identify community resilience indicators and the tools and resources needed to affect them to improve the ability of Chester County community members to take meaningful, deliberate action, individually and collectively, to prevent, prepare, protect, mitigate, respond to, and recover from shocks and stresses, including disasters.

Snapshot

Pennsylvania

- 67 Counties
- Over 2,500 municipalities

Chester County (Est.)

- 760 Square Miles
- 73 municipalities
- 512,000 population

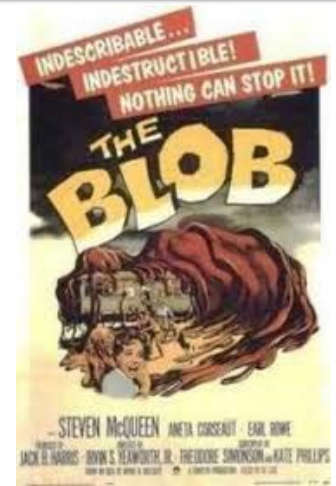


Photo credit: <https://www.imdb.com/title/tt0051418/>

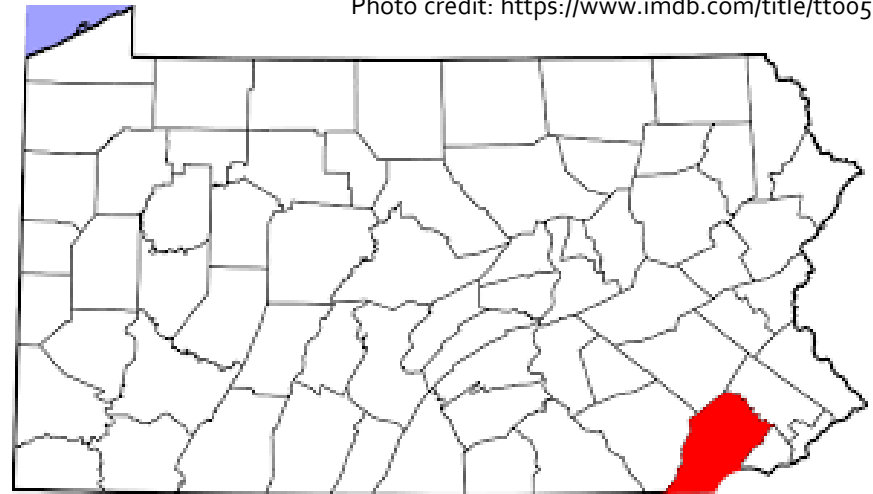


Photo credit: https://commons.wikimedia.org/wiki/User:David_Benbennick



Photo credit: <http://midnightinthesquare.com/>

Overarching Vision

Chester County stakeholders are:

Exploring the ***Pillars of Resilience*** to identify indicators and develop tools and metrics to inform resilience efforts and investments across all phases and mission areas of disasters.



- Engaging the Whole Community
- Resilience & Relevance: 365 Days a Year
- Data driven, but not data projects

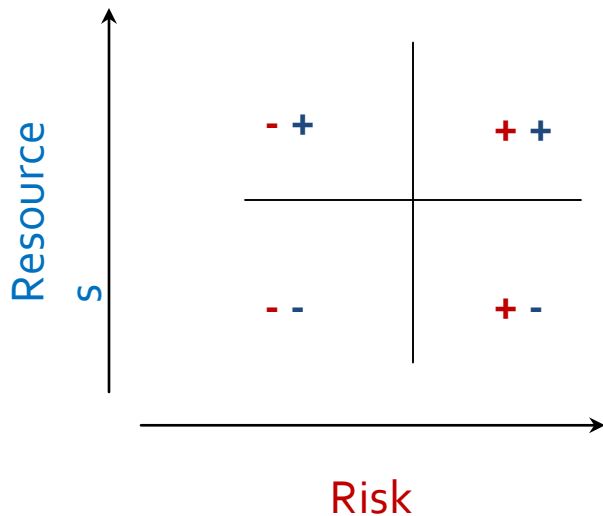
Importance of Relationships

Current Stakeholders

- Academic
- Government
- Human Service Agencies
- Faith Based Partners
- Community Collaborators
- Private Sector



*Risk = Hazard * (Vulnerability – Resources)*



Areas of Focus:

- Historical Data
- Need: real or perceived
- Willing Partners

Limit Vulnerability & Increase Resources

Self-Assessment

Based on research:

- How do existing surveys inform work?
- County level data doesn't tell the whole story, it may obscure it

Tools:

- Community engagement
- Measurable, but not a competition
- Manageable interventions
 - Time
 - Money
 - Sustainable over time
 - Requires a community champion, but becomes part of how a community functions

Challenges:

- Project / program driven without consideration for overall collective impact
- Continuing to look for input from the same stakeholders

Local Data & Projects

Chester County's GIS Open Data Portal:

<http://data1-chesco.opendata.arcgis.com/>

Roadmap to Health Information:

<http://www.healthychesco.org/datareports/>

Comprehensive Plan:

<http://www.chescoplanning.org/Resources/Data.cfm>

2018 Chester County Food Bank Security Assessment:

<https://chestercountyfoodbank.org/wp-content/uploads/2018/04/2018-Community-Food-Security-Assessment-Report.pdf>

County Health
Rankings & Roadmaps

Building a Culture of Health, County by County



Chester County #1 Healthiest County in Pennsylvania



Regional / State Level

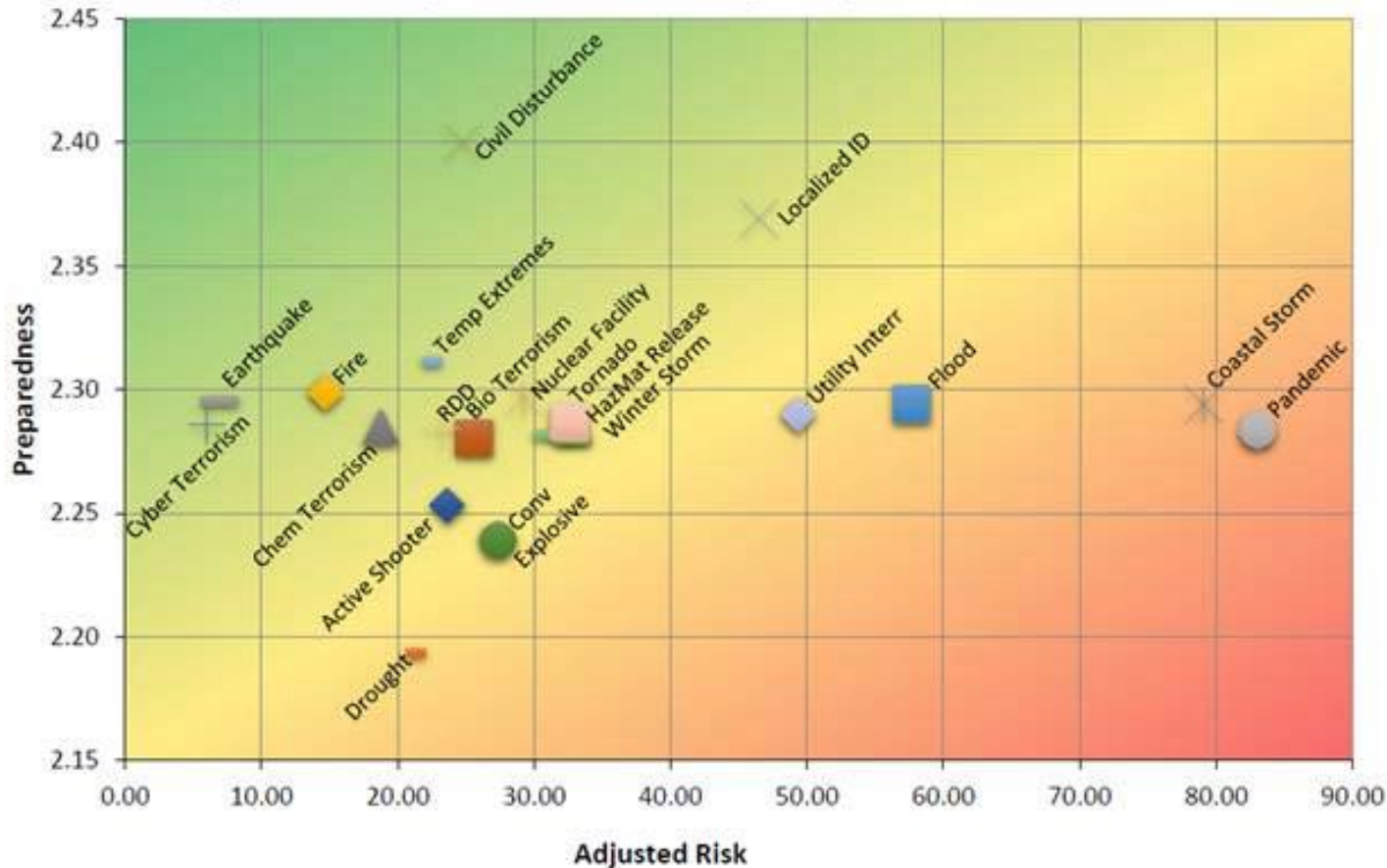
Public Health Risk Assessment Report for Chester County, Pennsylvania



DREXEL UNIVERSITY
Dornsife
School of Public Health
Center for Public Health Readiness
and Communication

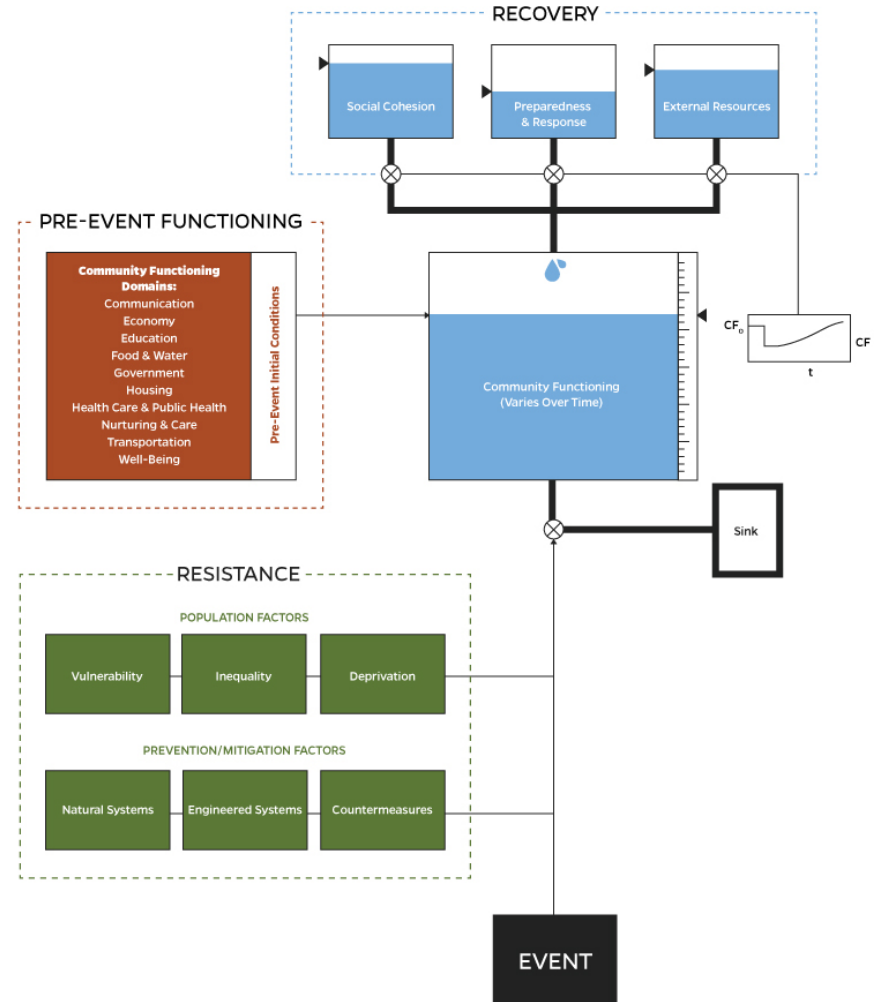


Figure 4. Adjusted Risk v. Preparedness, Chester County, Pennsylvania – 2018



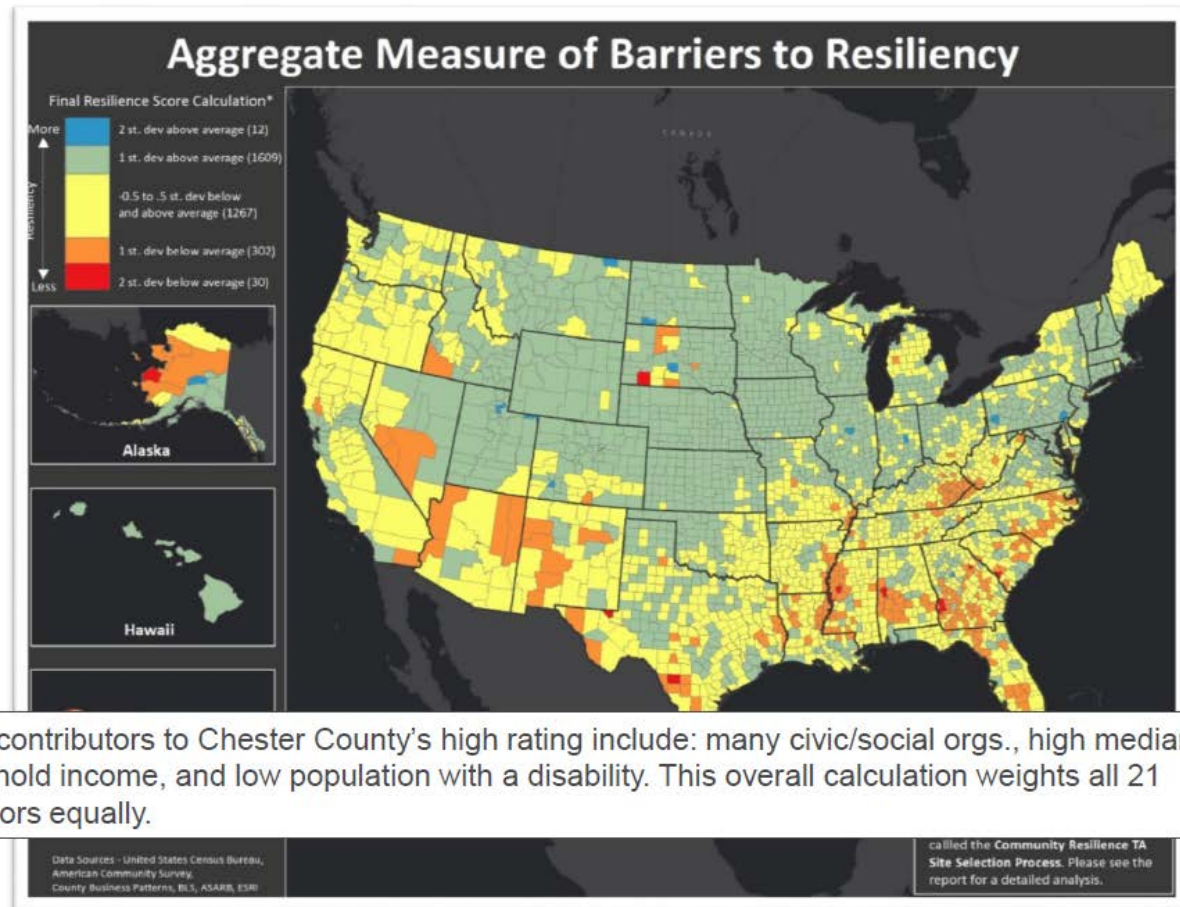
COPEWELL

- Looking for a turn-key solution
- Became a pilot community
- Work continues...



FEMA Technical Assistance: Looking Back & Ahead

- Challenges
- Benefits



Additional Information or Offers to Assist



Any Questions?

Janet Zeis

Community Resilience Coordinator

jzeis@chesco.org

610 344-5014

Chester County

- www.chesco.org
- www.facebook.com/CCDES
- @CCDES (Twitter)
- <https://vista.today/>