

Appendix A

NTEP Statistics Report

General NTEP Statistics	Last Year	This Year	Grand Total
	10/01/11 – 6/30/12	10/01/12 – 6/30/13	10/1/00 – 6/30/13
Total Applications Processed	(21) 204	(8) 185	(152) 3216
Applications Completed	210	194	3080
New Certificates Issued	195	193	2788
Active NTEP Certificates on 3/31/2012	1896	1977	

() = Reactivations

Assignments to Labs per Year	10/1/11 – 9/30/12	10/1/12 – 6/30/13	10/1/00 – 6/30/13
California	27	33	(16) 441
Canada	7	1	(4) 44
GIPSA-DC	1	1	17
GIPSA-KC	10	6	93
Kansas	2	0	(9) 70
Maryland	(9) 61	(6) 33	(43) 401
New York	2	(1) 7	(18) 170
NIST Force Group	6	1	(1) 89
North Carolina	13	6	(4) 118
Ohio	(13) 53	43	(28) 820
NTEP Staff	(1) 92	(2) 35	(12) 875
Applications Not Yet Assigned to a Lab			3

() = Reassignments from another lab

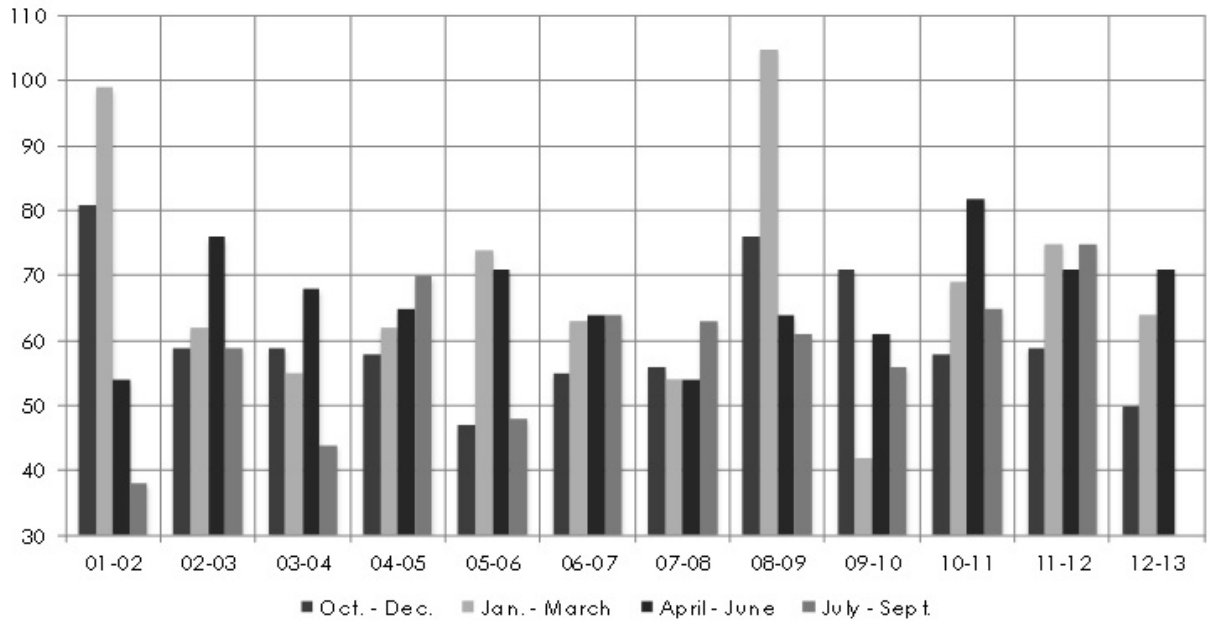
Process Statistics	2012 - 2013	2000 - 2013
Average Time to Assign an Evaluation	4 Days	9 Days
Average Time to Complete an Evaluation		137 Days

Report on Evaluations in Progress

Evaluations in Progress	0-3 Months	3-6 Months	6-9 Months	9-12 Months	Over 1 Year	Total
June 2009	48	27	17	12	29	133
October 2009	41	33	18	12	33	137
December 2009	45	30	22	12	28	137
March 31, 2010	24	20	18	19	23	104
June 30, 2010	37	12	11	13	24	97
October 30, 2010	40	30	8	8	20	106
December 31, 2010	39	25	22	5	20	111
March 31, 2011	37	27	13	19	17	107
June 30, 2011	47	20	7	7	21	102
September 30, 2011	42	28	11	5	19	105
December 31, 2011	37	19	23	5	17	101
March 31, 2012	40	17	7	21	14	99
June 30, 2012	41	21	10	6	20	98
September 30, 2012	50	30	15	7	19	121
December 31, 2012	32	24	17	7	18	98
March 31, 2012	36	12	14	12	18	92
June 30, 2013	53	18	6	6	19	102

In Progress by Lab	0-3 Months	3-6 Months	6-9 Months	9-12 Months	Over 1 Year	Total
California	18	1	2	1	4	26
Canada	0	0	0	0	0	0
GIPSA-DC	0	0	0	0	1	1
GIPSA-KC	6	0	0	0	1	7
Maryland	8	3	0	2	3	16
New York	2	1	0	0	0	3
NIST Force Group	0	0	0	0	4	4
North Carolina	2	2	0	0	2	6
Ohio	10	10	4	3	4	31
NTEP Staff	3	1	0	0	0	4
Unassigned	4	0	0	0	0	4
Total Pending:						102

Report on Applications Received by Quarter



	01-02	02-03	03-04	04-05	05-06	06-07	07-08	08-09	09-10	10-11	11-12	12-13
Oct - Dec	81	59	59	58	47	55	56	76	71	58	59	50
Jan - Mar	99	62	55	62	74	63	54	105	42	69	75	64
Apr - Jun	54	76	68	65	71	64	54	64	61	82	71	71
Jul - Sep	38	59	44	70	48	64	63	61	56	65	75	
Total	272	256	226	255	240	246	227	306	230	274	280	185

Average Per Quarter Overall: 63.8

Average Per Quarter This FY: 61.7

THIS PAGE INTENTIONALLY LEFT BLANK