

Appendix A NTEP Statistics Report

NTEP Statistics through June 2016

General NTEP Statistics	Last Year	This Year to Date
	10/01/14 – 9/30/15	10/01/15 – 6/30/16
Total Applications Processed	(42) 271	(20) 206
Applications Completed	314	199
New Certificates Issued	281	176
Active NTEP Certificates		1996

() = Reactivations

Assignments to Labs per Year

	10/1/14 – 9/30/15	10/1/15 – 6/30/16
California	17	22
Canada	1	3
GIPSA-IL	0	1
GIPSA-KC	8	8
Maryland	(12) 54	(4) 34
New York	(6) 11	9
NIST Force Group	3	7
North Carolina	13	8
Ohio	48	(2) 42
Oregon	(1) 1	0
NTEP Field	6	(1) 5
NTEP Administrator	108	67
Applications Not Yet Assigned to a Lab		3

() = Reassignments from another lab

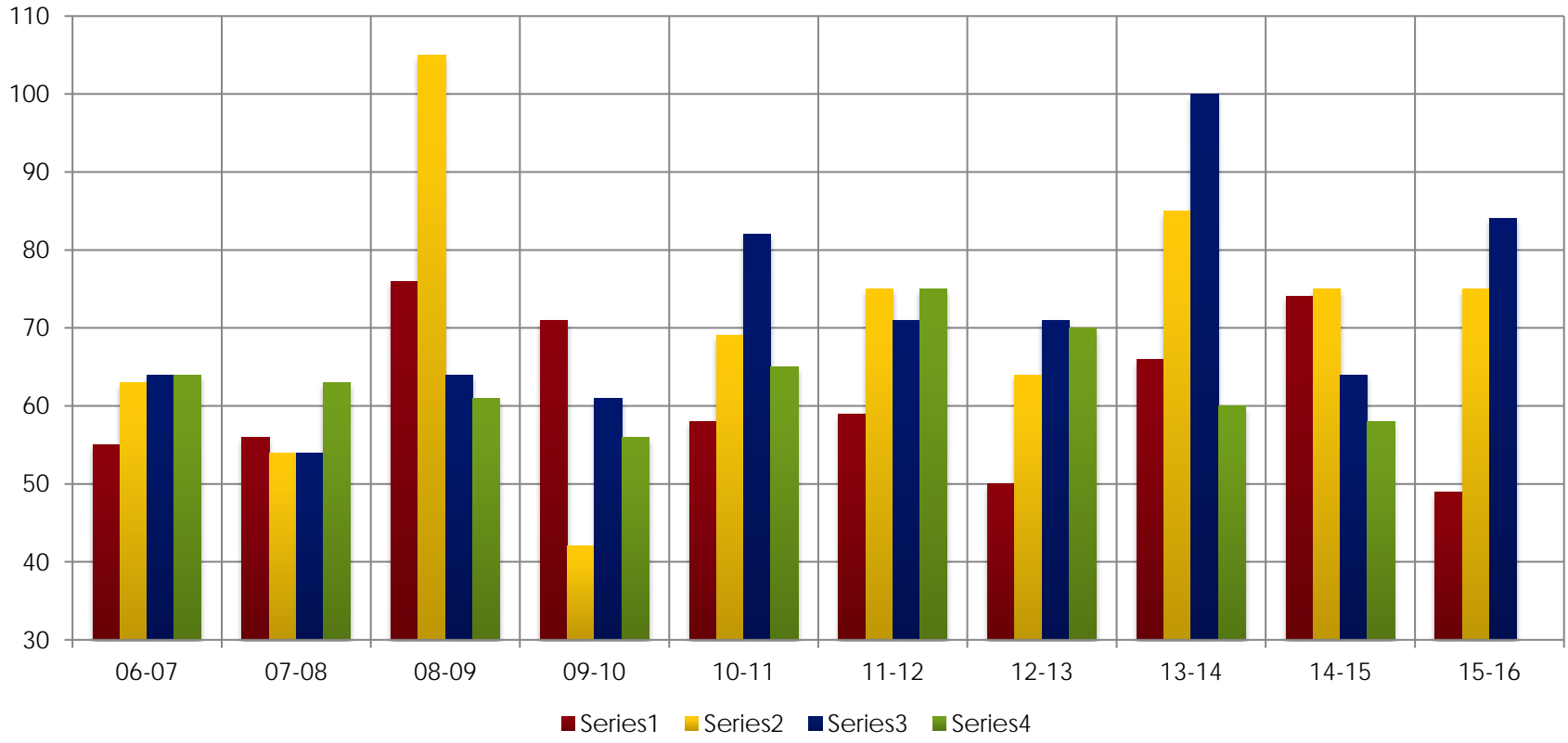
Process Statistics

10/2008 - Present

Average Time to Assign an Evaluation	4.9 Days
Average Time to Complete an Evaluation	87.0

Report on Evaluations in Progress

Evaluations in Progress	0-3 Months	3-6 Months	6-9 Months	9-12 Months	Over 1 Year	Total
June 30, 2012	41	21	10	6	20	98
September 30, 2012	50	30	15	7	19	121
December 31, 2012	32	24	17	7	18	98
March 31, 2012	36	12	14	12	18	92
June 30, 2013	53	18	6	6	19	102
September 30, 2013	44	32	5	4	21	106
December 31, 2013	41	25	24	2	24	116
March 31, 2014	53	23	13	17	11	117
June 30, 2014	55	30	14	8	19	126
September 30, 2014	44	38	18	6	19	125
December 31, 2014	44	17	17	12	16	106
March 31, 2015	43	24	10	13	17	107
June 30, 2015	39	21	12	5	15	92
September 18, 2015	28	20	8	5	12	73
December 23, 2015	43	14	5	7	13	82
March 31, 2016	48	15	7	6	8	84
June 30, 2016	57	13	7	3	7	87
In Progress by Lab	0-3 Months	3-6 Months	6-9 Months	9-12 Months	Over 1 Year	Total
California	6	5	1		1	13
Canada	1	1				2
GIPSA-IL		1				1
GIPSA-KC	7			2		9
Maryland	10	2		1	2	15
New York	5	1				6
NIST Force Group	3		3			6
North Carolina	4	2	1		2	9
Ohio	17	1	1		2	21
Oregon						
NTEP Staff	1		1			2
Unassigned	3					3
					Total Pending:	87



	06-07	07-08	08-09	09-10	10-11	11-12	12-13	13-14	14-15	15-16
Oct - Dec	55	56	76	71	58	59	50	66	74	49
Jan - Mar	63	54	105	42	69	75	64	85	75	75
Apr - Jun	64	54	64	61	82	71	71	100	64	84
Jul - Sep	64	63	61	56	65	75	70	60		
Total	246	227	306	230	274	280	255	271	311	208

Average Per Quarter: 10-YR: 66.9

Average Per Quarter This FY: 69.3

This page intentionally left blank.