

National Institute of Standards and Technology  
Gaithersburg, MD

# Campus Master Plan

Public Information

May 11, 2017



United States Department of Commerce

- **Gaithersburg Campus Master Plan**

  - Context & Considerations

  - Development Alternatives

- **NEPA Process**

  - Approach

  - Public participation process



---

## **Participants:**

### **National Institute of Standards & Technology**

Kent Rochford, Acting NIST Director

Skip Vaughn, Chief Facilities Management Officer

Gail Porter, Director, Public Affairs Office

Michael Blackmon, Environmental Officer

Susan Cantilli, Project Manager

Phillip Neuberg, Federal Preservation Officer

### **Metropolitan Architects & Planners**

Debargha Sengupta, Project Manager

Susan Drew, Senior Architect

### **ERG – Environmental Consultants**

Patrick Goodwin, Senior Environmental Scientist



## National Institute of Standards and Technology

**Mission:** To promote U.S. innovation and industrial competitiveness by advancing measurement science, standards, and technology in ways that enhance economic security and improve our quality of life.

- Founded in 1901 as National Bureau of Standards, NIST is a non-regulatory agency and Federal research laboratory in the US Department of Commerce
- Relocated from Washington DC to Gaithersburg in 1960's.
- 26 buildings were constructed between 1961 and 1969, and 73% of today's assignable space is in these buildings.



- Acoustics
- Additive manufacturing
- Biochemistry
- Biology
- Biotechnology
- Chemistry & Chemical Engineering
- Computer science
- Dimensional metrology
- Engineering
- Fire Research
- Forensic Science
- Materials Science
- Mathematics and Statistics
- Mechanical Engineering
- Medical Physics
- Metallurgy
- Molecular Biology
- Nanotechnology
- Neutron Research
- Quantum Physics
- Robotics
- Structural Engineering
- Wireless Communications



# Existing Campus



**Area:** 579 acres  
**Buildings:** 3.6 million GSF  
62 permanent or temporary buildings  
**Personnel:** Approx. 4,000 federal staff & associates

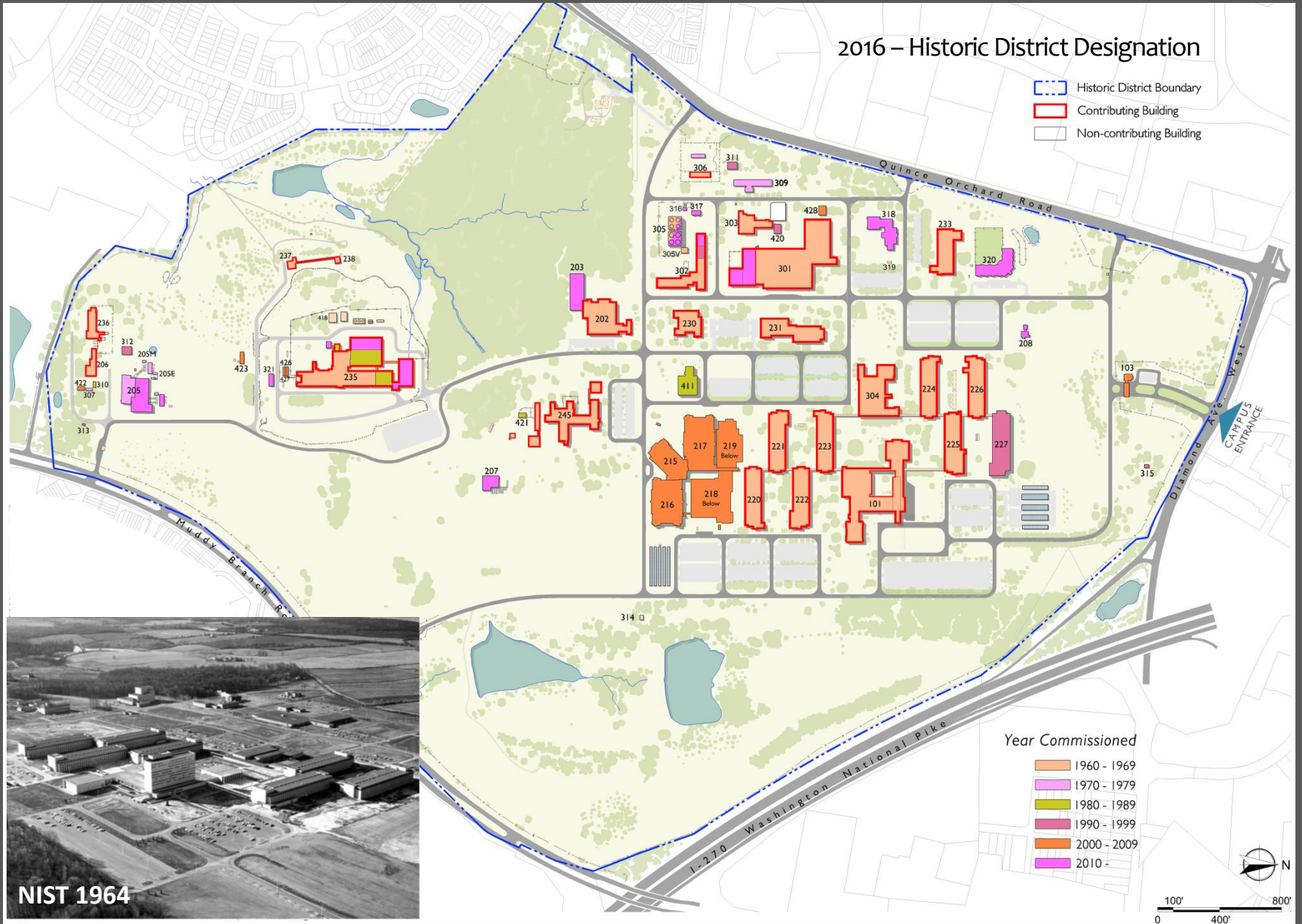


# Existing Campus





# History of Campus Development





# Representative Campus Buildings



Building 225: Typ. General Purpose Lab (1964)



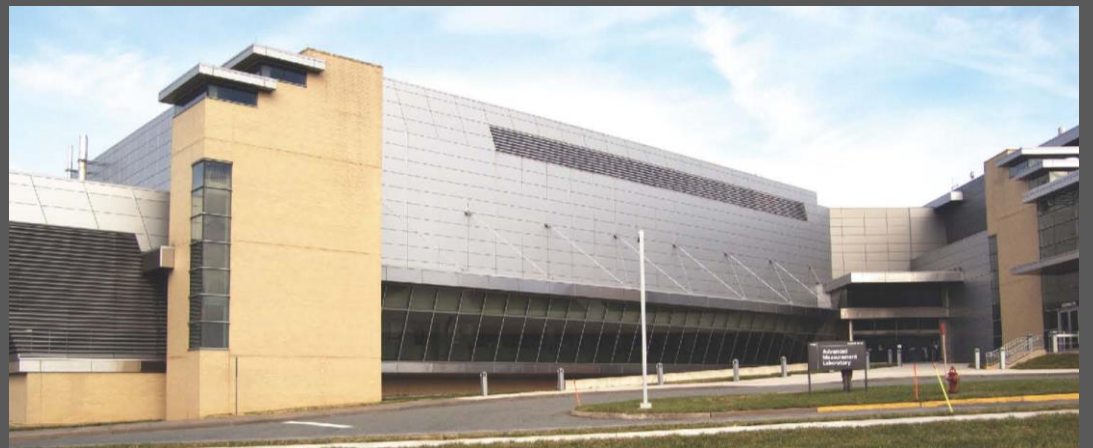
Building 304: Shops (1964)



Building 320: Childcare (2012)



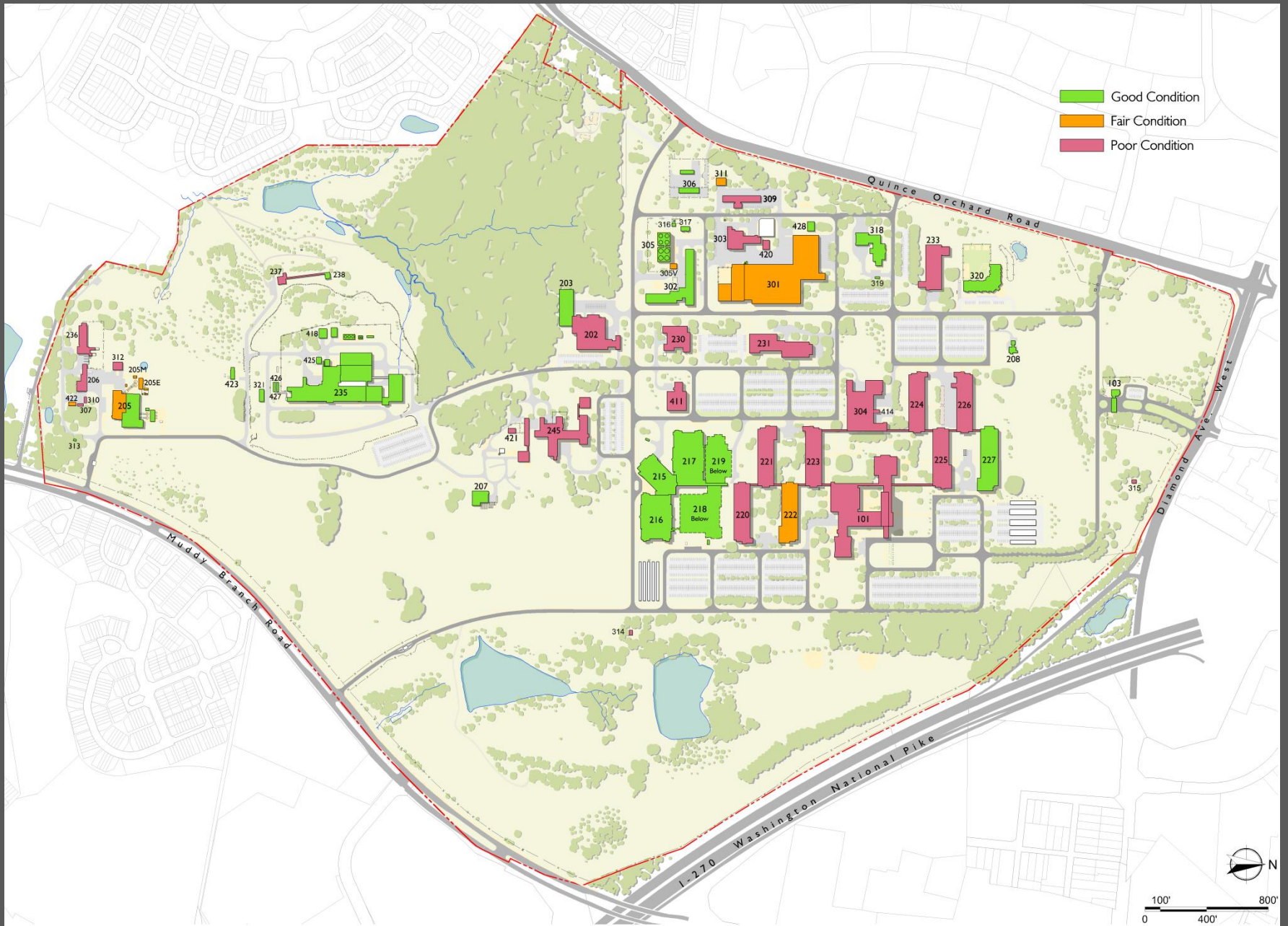
Building 101: Administration / Conference Center (1965)



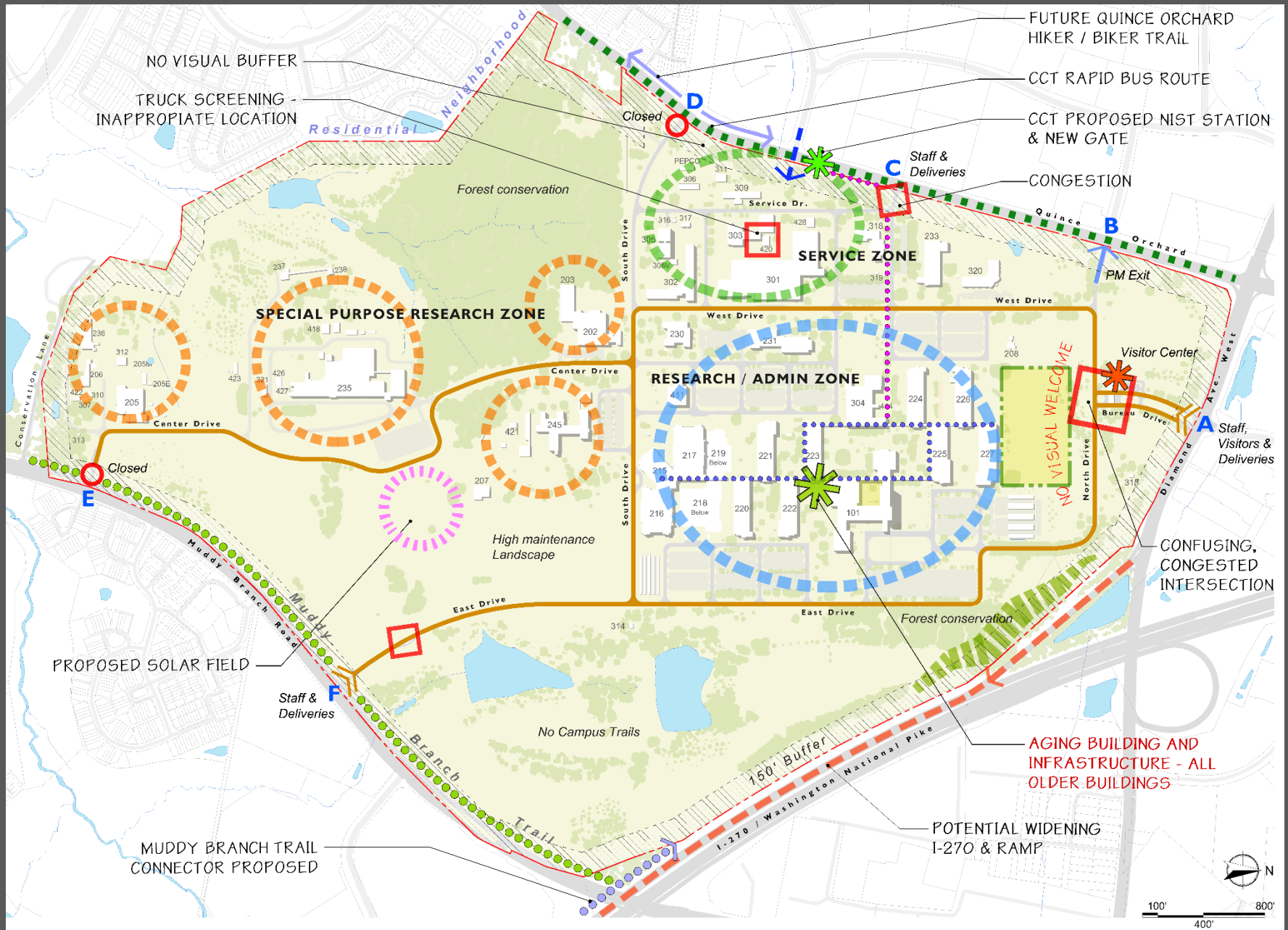
Building 215: Nano-Fabrication (2004)



# Existing Building Conditions



# Campus Issues





# Consolidated Considerations for the Master Plan

- Poor Lab Environmental Controls, limiting current & future research
- Aging Buildings and Infrastructure
- Office Utilization Improvements
- Conference Center – Access & Improvements
- Historic District Context
- Stormwater Management
- Transit Linkages
- Campus Circulation & Parking
- Security Enhancement
- Pedestrian Connections
- Landscape - unity and maintenance
- Energy Efficiency & Sustainability



Building 101, auditorium on the left

# Master Plan Preliminary Program

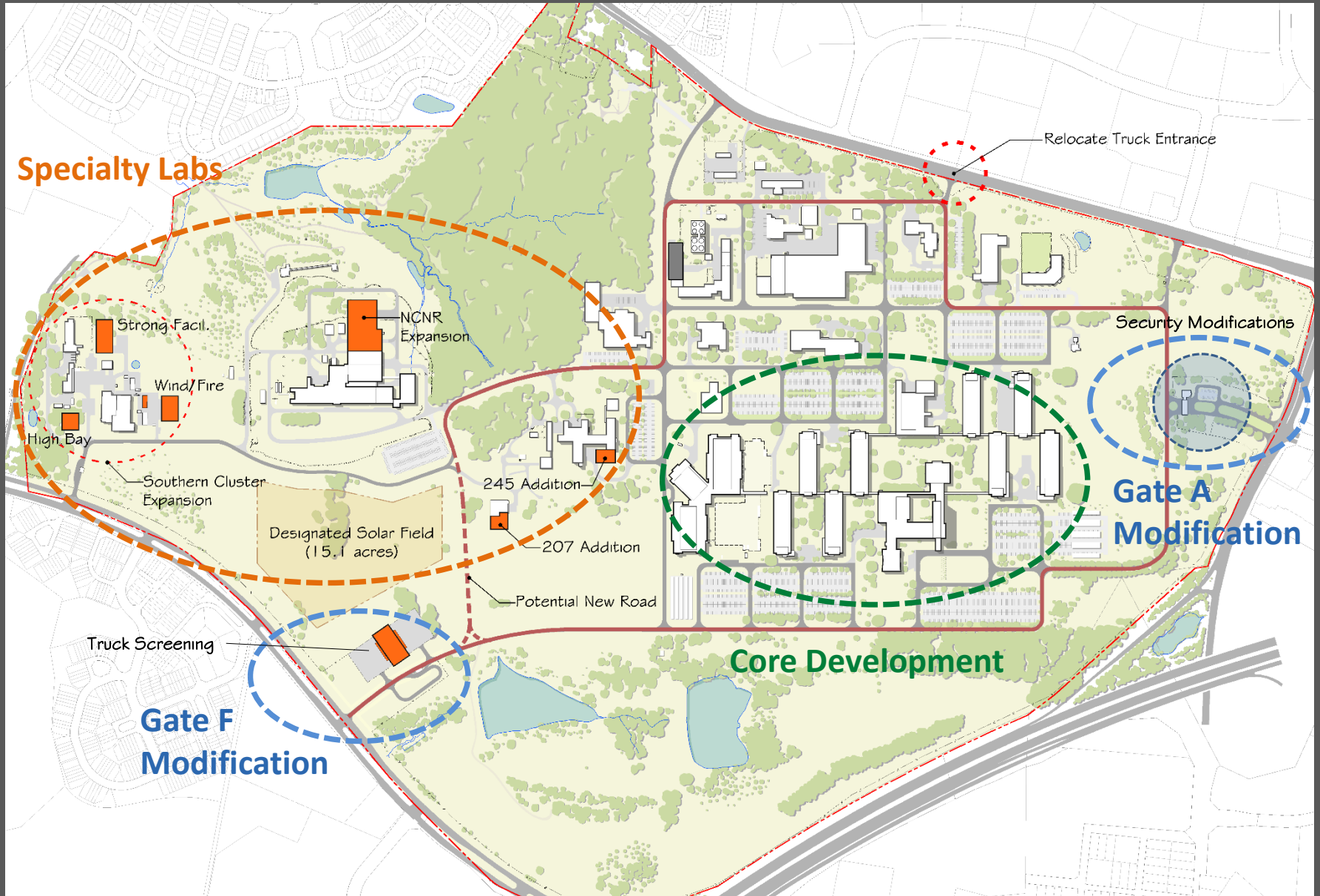
- Space Program represents current needs for upgrade & replacement as well as anticipated growth in research programs.
- Growth projections based on planned research programs by Laboratories, and related support by administrative organizations.
- Projections are in line with the historic growth patterns.

PROJECTED GROWTH	EXISTING		5-10 YEARS PROJECTIONS		20 YEAR PROJECTIONS		20 YEAR OVERALL DIFFERENCE	
	People #	Space ASF	People #	Space ASF	People #	Space ASF	People #	Space ASF
ASF = Assignable Square Feet								
People	4,007		4,515		5,096		1,089	
Office/ Office Support		615,463		764,830		863,600		248,137
Laboratories/Support/Special/ADP		875,198		981,674		1,124,817		249,619
		21,997		17,683		18,715		-3,282
Service and Support		313,044		313,644		313,644		600
Subtotal	4,007	1,825,702	4,515	2,077,831	5,096	2,320,776	1,089	495,074
<b>ADDITIONAL FACILITY NEEDS</b>								
Builidng Expansions/Screening				55,300		85,300		85,300
Total ASF		1,825,702		2,133,131		2,406,076		580,374
Total Gross Square Feet		3,640,067						± 1,200,000

- Establish a framework for future development (20-year horizon)
- Meet near and long-term needs of the campus in support of NIST research mission
- Integrate recommendations from recent studies
- Maintain attractive campus environment
- Respect & embrace campus historic district designation
- Advance NIST and DoC sustainable design goals



# Common Planning Approaches



- Modernization of aging, inadequate laboratories
- New laboratories and administrative office space in the campus core
- Truck screening relocation to Gate F, together with shipping & receiving
- Improvements to entrance and security of Gate A
- New and expanded specialty laboratory facilities on the southern campus
- Parking improvements/changes relating to chosen Alternative
- Landscape enhancement, low maintenance plantings, stormwater mgmt.
- Improved sidewalk connectivity – at entrances, possible CCT station, campus
- Sustainable design opportunities
  - PV power generation ( new solar field, parking cover, on new buildings)
  - Energy efficient renovations and net-zero new (non-lab) buildings
  - Significant daylighting for new (non-lab) buildings



Gate A



Gate F



Concourse Connectors



Parking / Solar Cover

## Core Alternatives:



### B: Extending Connections

New buildings tie directly into the existing campus internal circulation spine, extending it both north and south.



### C: Creating a New Precinct

A new cluster of buildings is established to the south of South Drive, with a mixture of facilities and amenities.



### D: Capturing the Center

New buildings are concentrated in the center of campus, emphasizing proximity and assignment flexibility.



### F: New Research Emphasis

All new buildings are for research, with administrative growth and Building 411 replacement in GPLs.

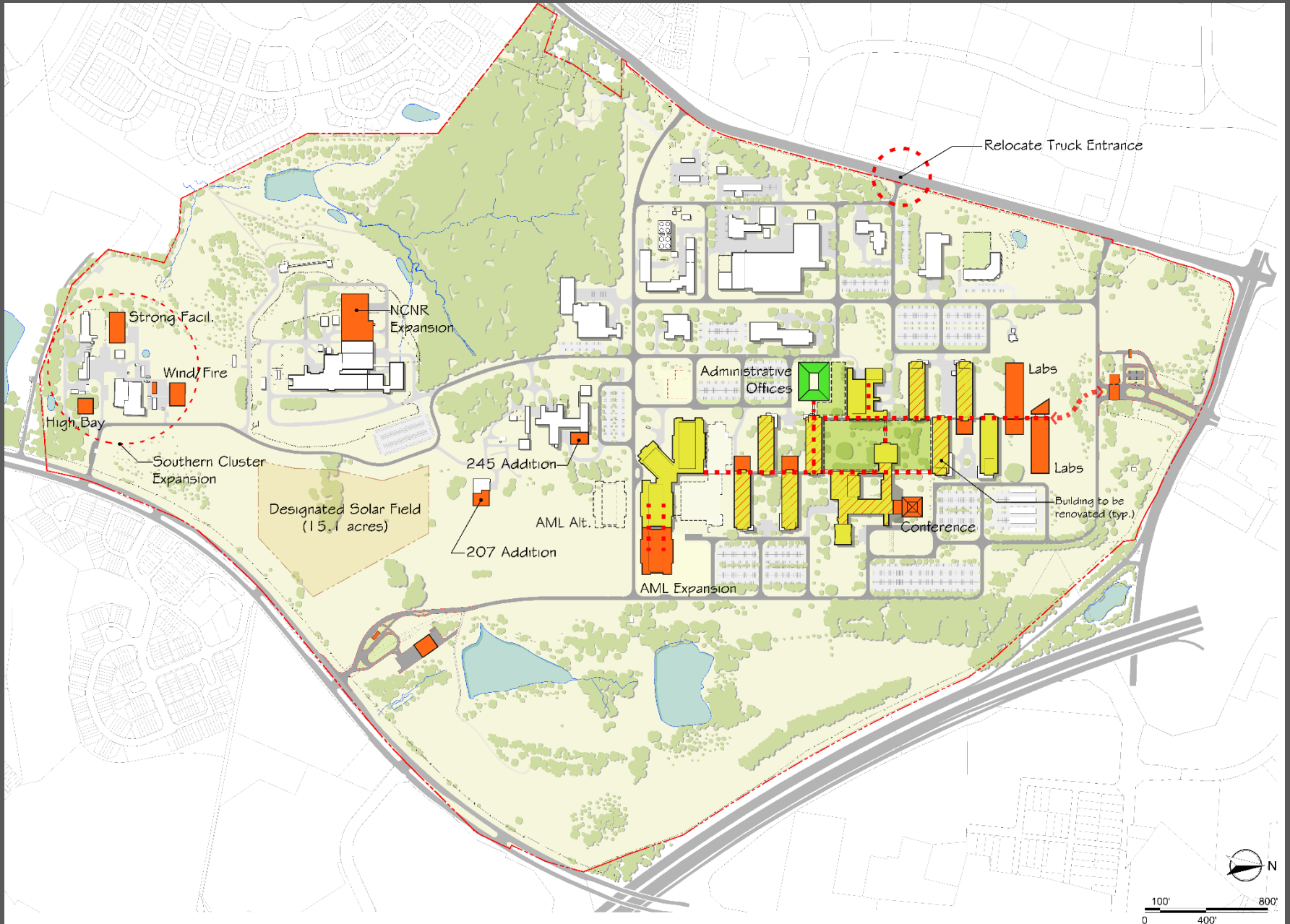


## Gate Alternatives

Security enhancements to Gate A, modification or replacement Truck Screening to Gate F, existing or new entrance



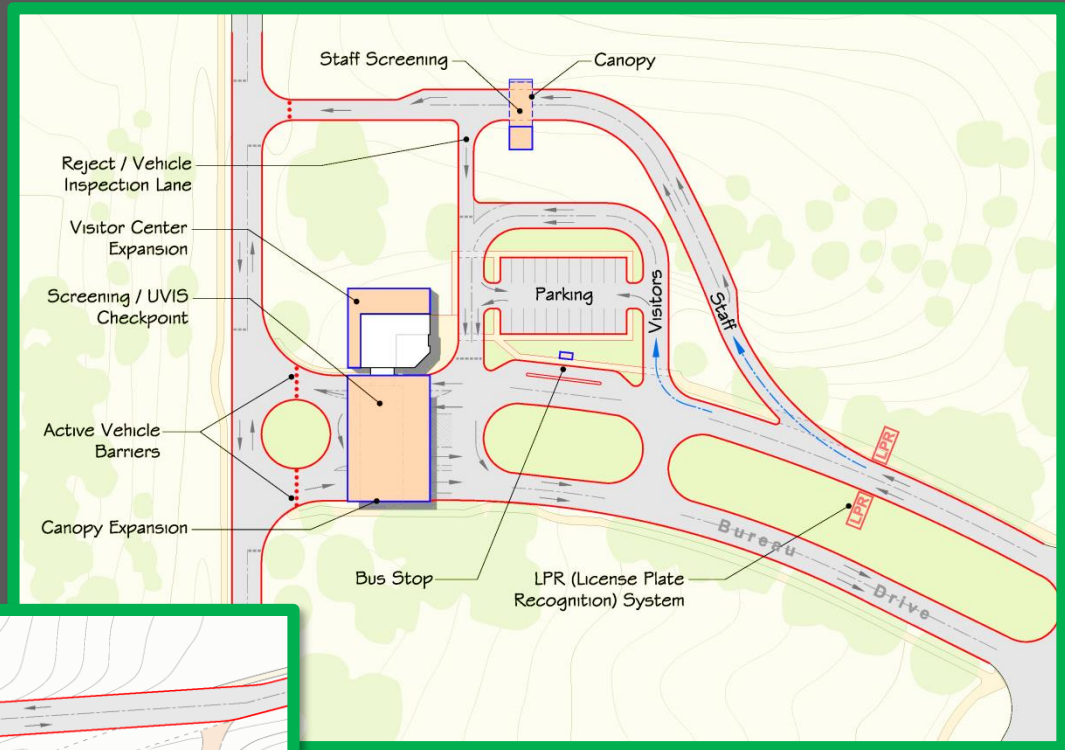
# Alternative B: Extending Connections





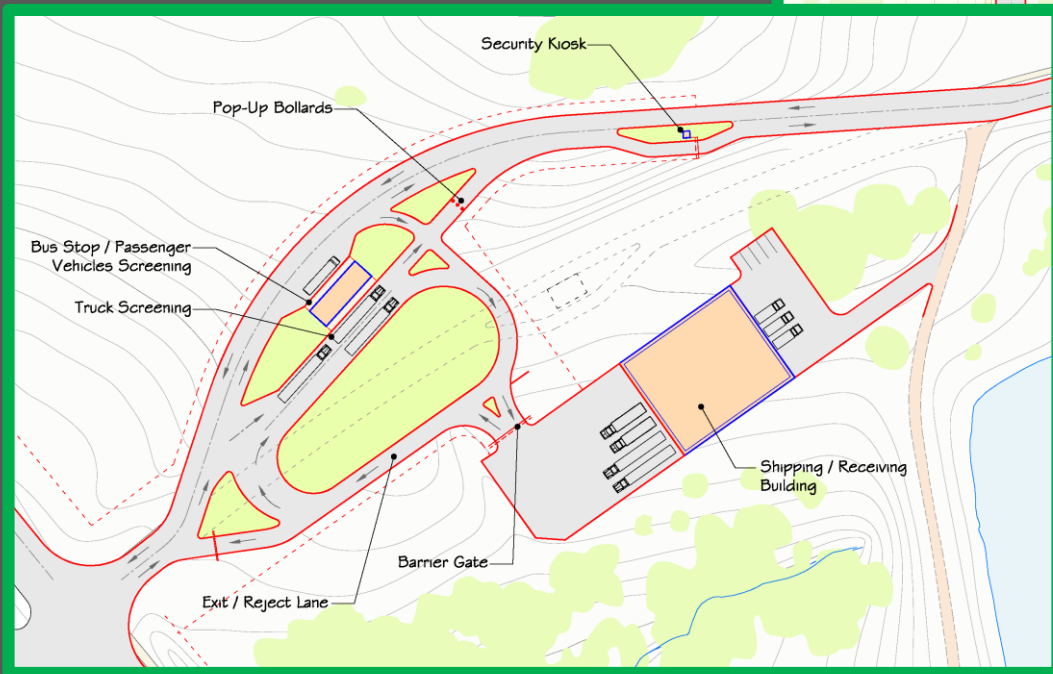
# Alternative B: Extending Connections

## Alternative B Gate Concepts

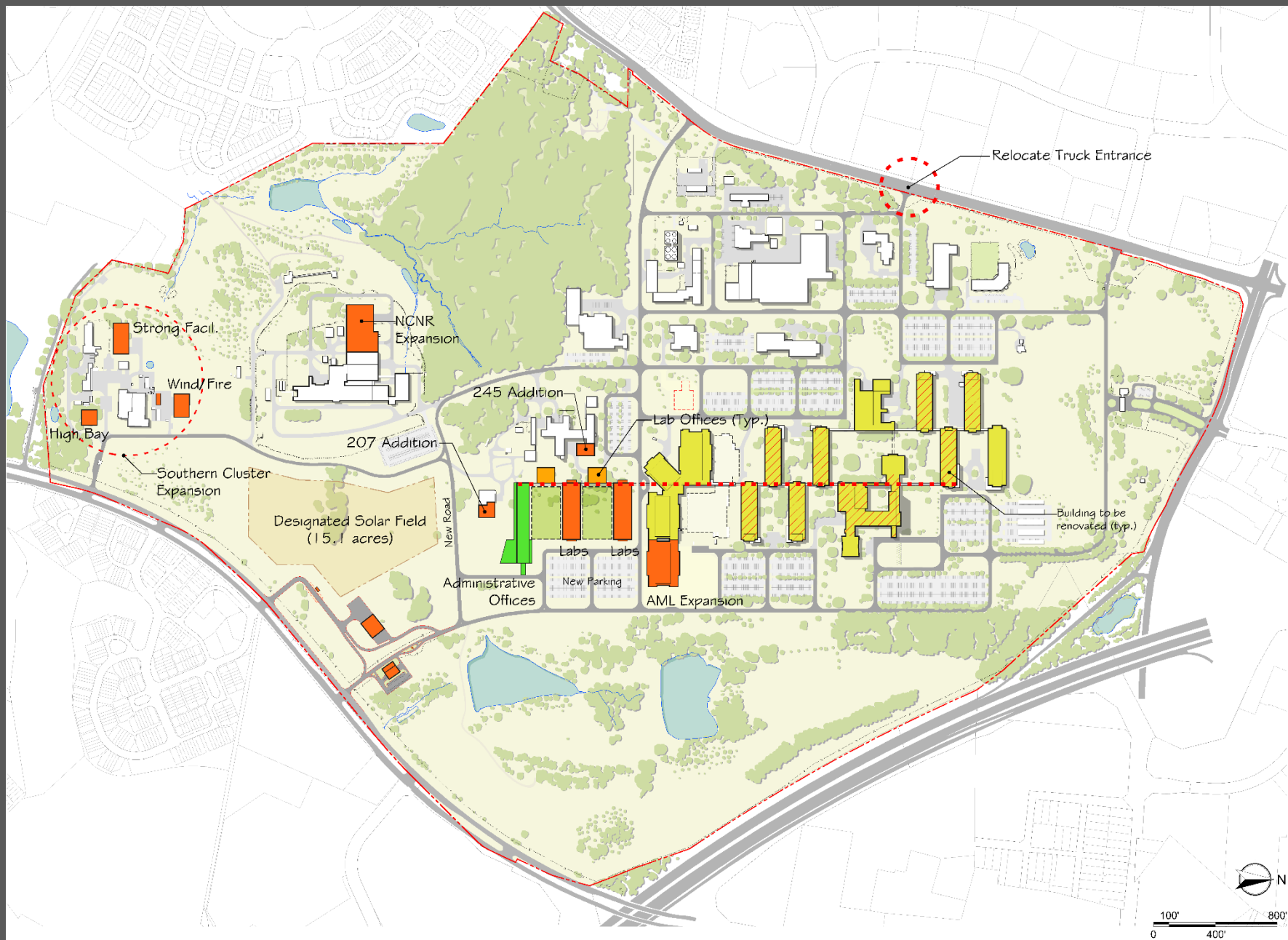


Gate A

Gate F



# Alternative C: Creating a New Precinct

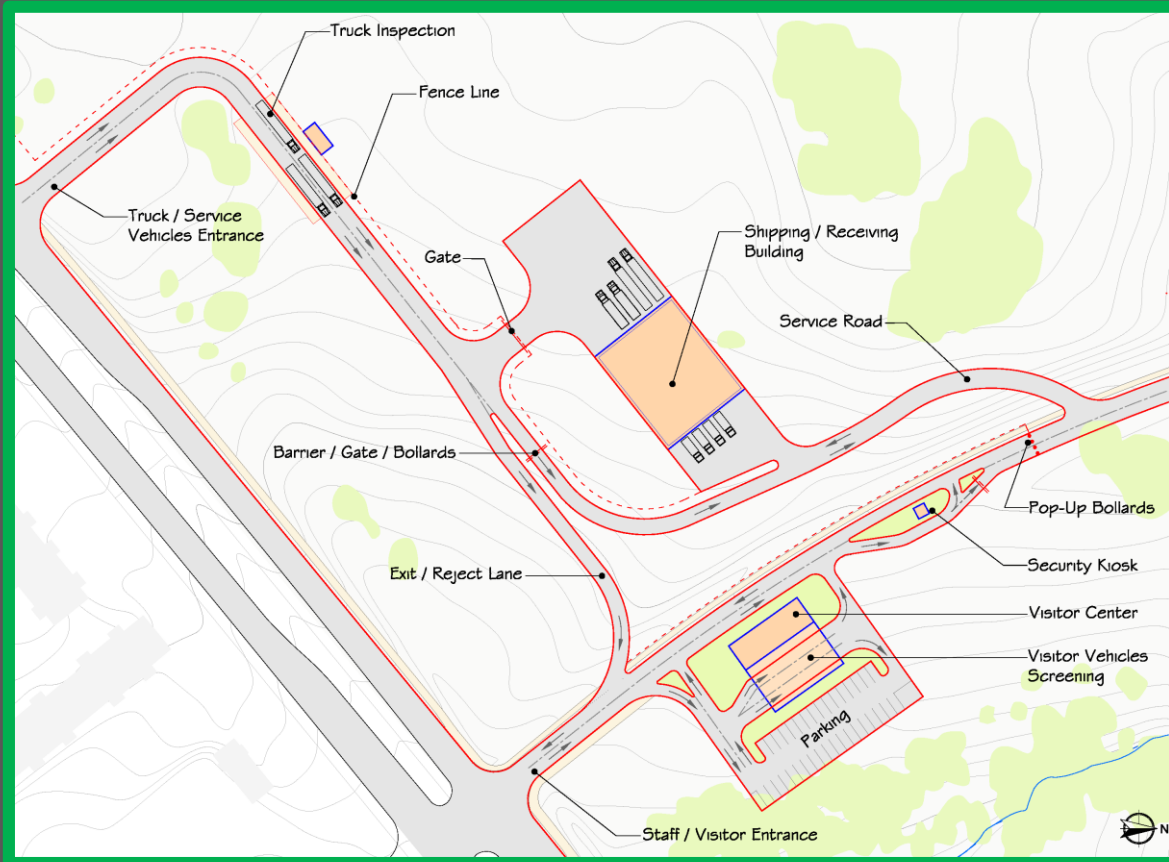


# Alternative C: Creating a New Precinct

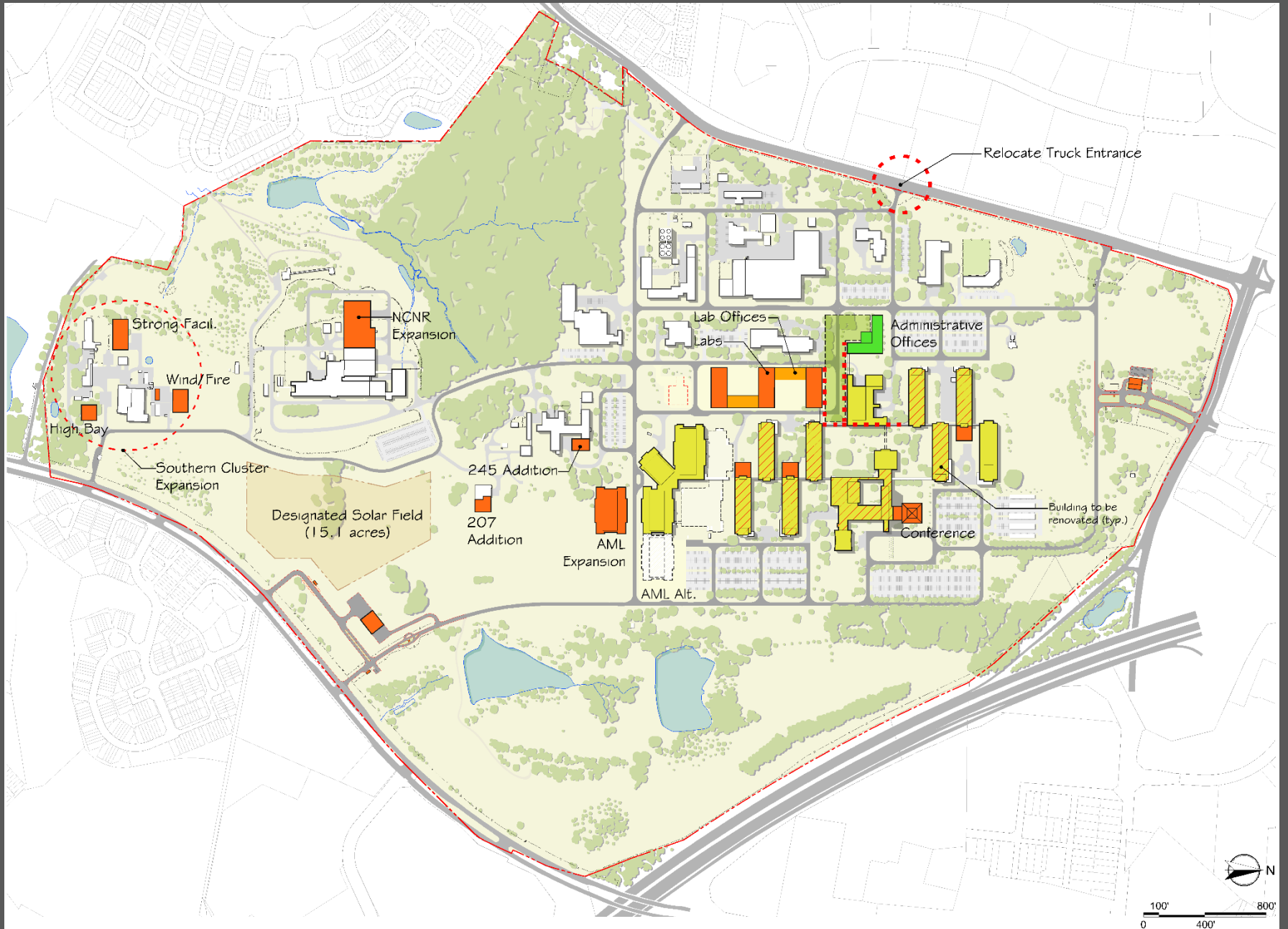
## Alternative C Gate Concepts

Gate A Remains the same

### Gate F



# Alternative D: Capturing the Center

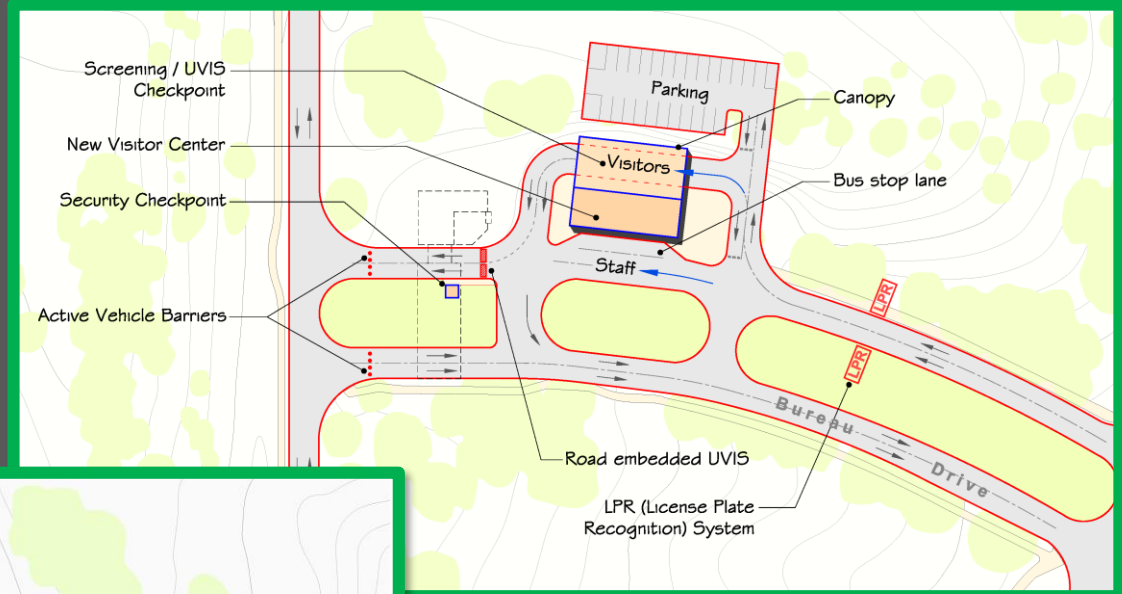
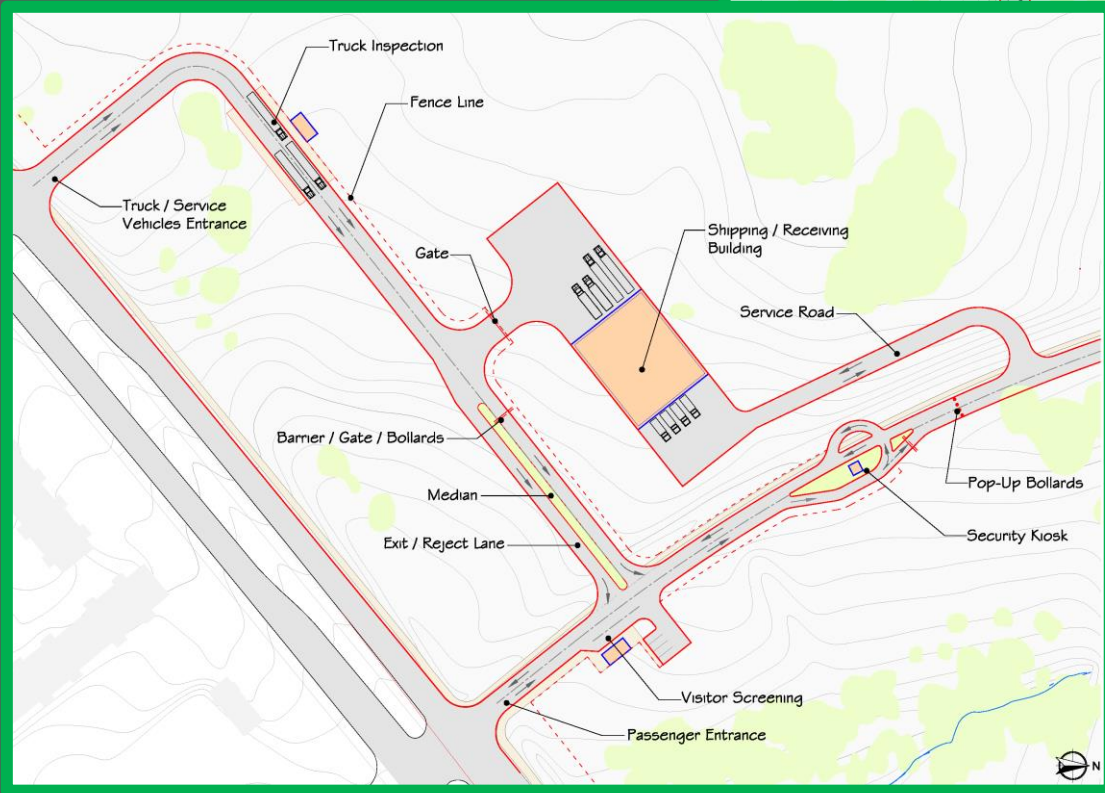




# Alternative D: Capturing the Center

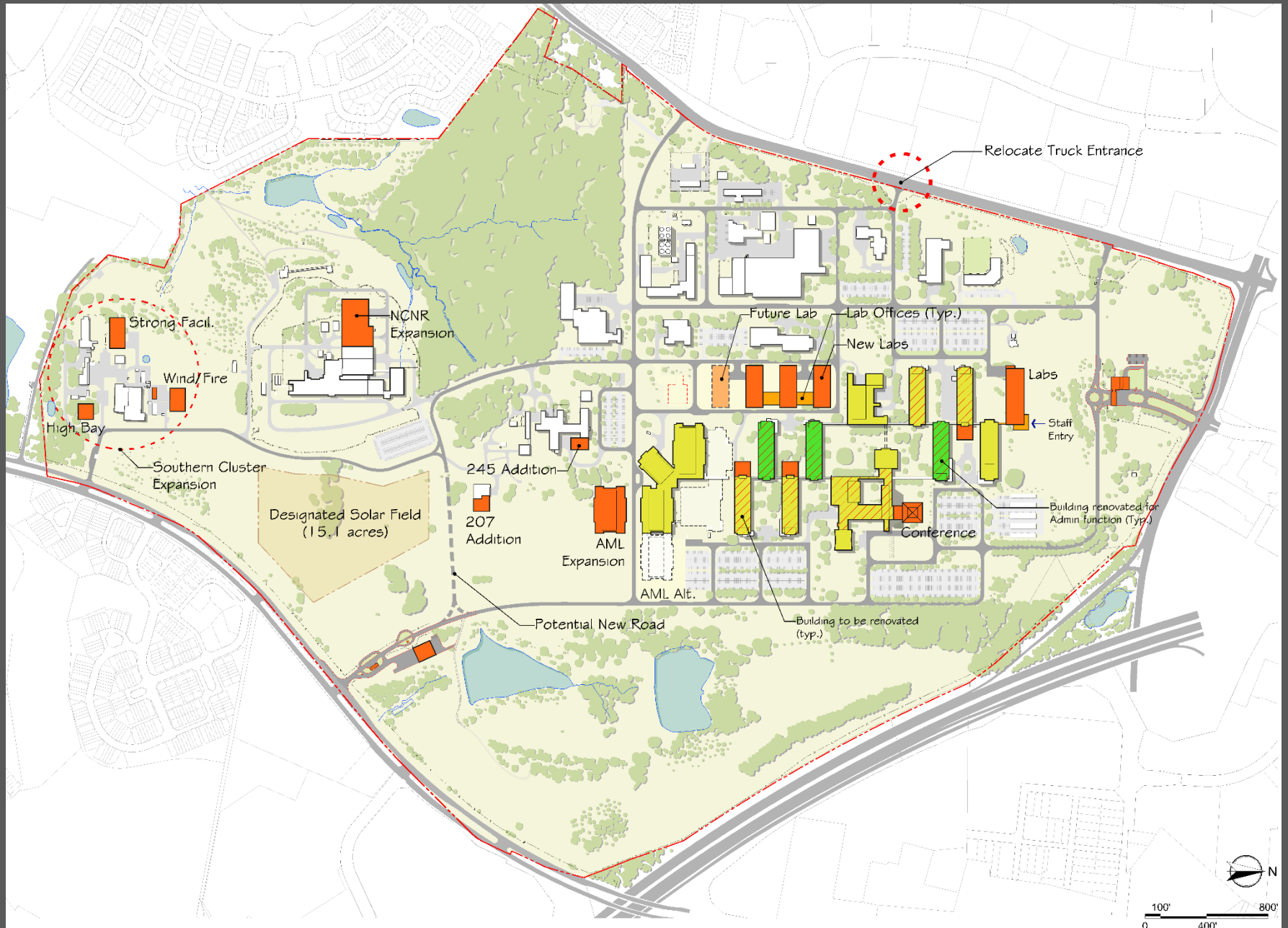
## Alternative D Gate Concepts

### Gate F



### Gate A

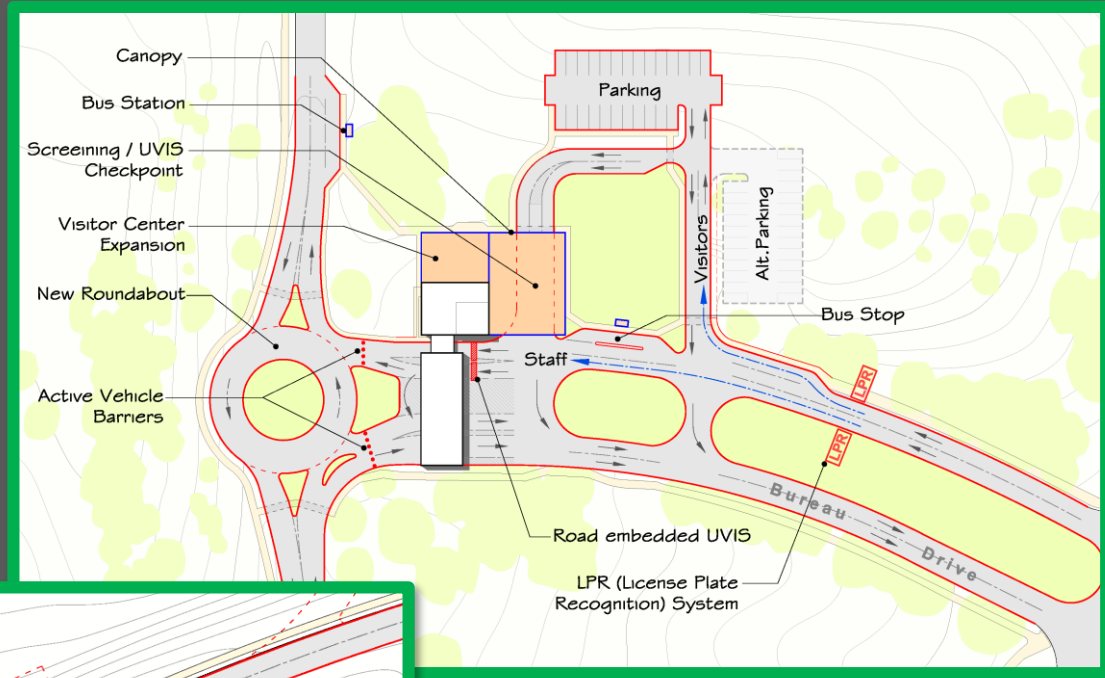
# Alternative F: New Research Emphasis





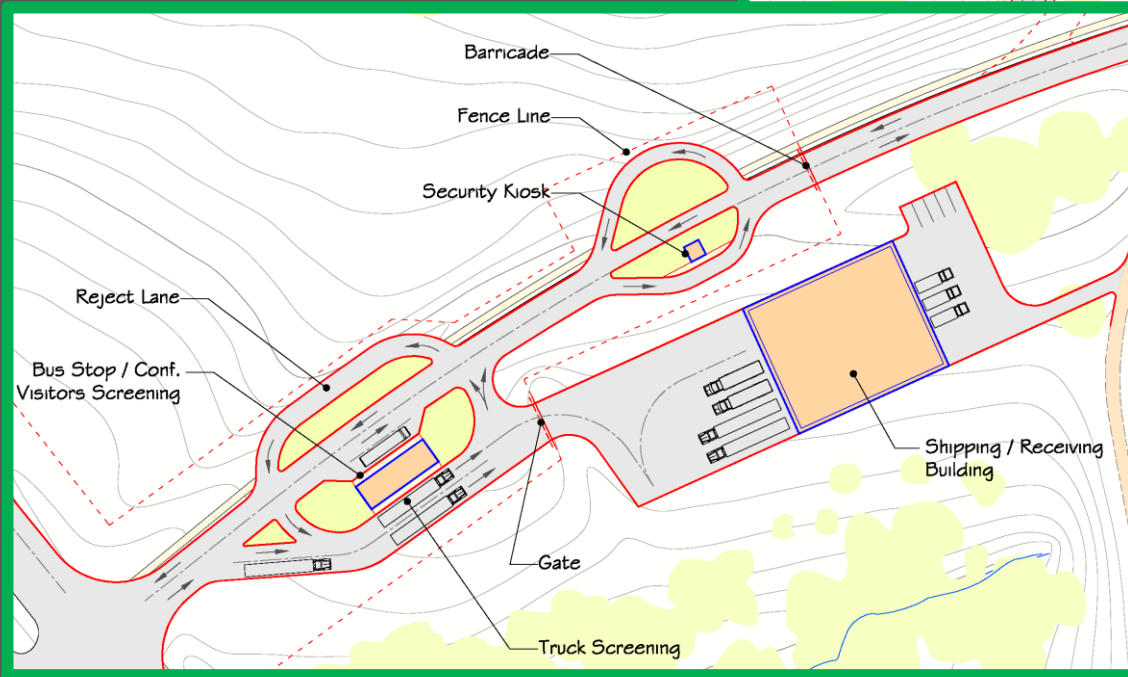
# Alternative F: New Research Emphasis

## Alternative D Gate Concepts



Gate A

Gate F



- Respect Gaithersburg's initiatives and zoning
- Address access issues at all campus entrances
- Minimize/eliminate entrance queuing at Gate A
- Eliminate truck back-up at the Quince Orchard Road entrance
- Respect campus historic district designation
- Enhance conference visitor experience
- Optimize parking
- Advance NIST's sustainable design and energy efficiency strategies
- Make the Draft Master Plan document available for public review.





# National Environmental Policy Act (NEPA) Overview

## NEPA:

- Serves as the basic national charter for protection of the environment
- Ensures that environmental information is available to public officials and citizens **before** decisions are made
- Helps public officials:
  - Make **informed decisions** that are based on understanding of environmental consequences
  - Take actions that protect, restore, and enhance the environment
- Applies to actions of all Federal agencies



# Three Tiers of NEPA Review

## Categorical Exclusion (CE)

- Actions with no significant effect on human environment, individually or cumulatively
- Predefined categories of actions

## Environmental Assessment (EA)

- Actions that do not qualify for a CE
- EA determines if action would have significant impacts
  - If yes/maybe → Environmental Impact Statement
  - If no → Finding of No Significant Impact (FONSI)

**NIST  
intends to  
prepare  
an EA**



## Environmental Impact Statement (EIS)

- Actions with significant and/or highly controversial impacts
- Most detailed environmental review
- Most extensive public involvement, including comment response

**Greater impacts = more review**



## 1. Conduct scoping

- Consider potentially affected environment when developing alternatives
- Solicit input from stakeholders and public
- Identify primary environmental topics of concern to evaluate in EA

## 2. Develop Draft EA

- Objectively evaluate all reasonable Master Plan alternatives
- Assess and discuss potential impacts
  - Example topics of concern: Water resources, vegetation, air quality, cultural resources, transportation, and view shed
- Identify mitigation measures to minimize impacts
- Distribute to Federal, state, and local agencies for comments

# Approach for NIST Gaithersburg Master Plan EA

3. Make Draft Master Plan and Draft EA publicly available for comment
4. Finalize consultations with Federal, state, and local agencies
5. Develop Final Master Plan & Final EA
6. Render a decision





# Timeline for Master Plan and EA

Component	Expected Completion Date
Conduct Scoping	May 11 – June 15, 2017
Complete Draft Master Plan/EA	Autumn 2017
Complete Final Master Plan/EA	Spring 2018



## You can make a difference

Comments may be the most important contribution from citizens.

### Effective Comments:

- Are provided early in the NEPA process (i.e., this informational meeting)
- Are clear, concise and relevant to the analysis
- Are solution-oriented and provide specific examples
- Suggest additional alternatives or elements within the plan
- Suggest sources of relevant data or information for consideration





## Comments Today

- Please clearly state your name when coming up to comment,
- Please adhere to 3-minute time limit
- NIST will take comments into consideration when developing Master Plan and EA
- We are audio recording the comments for record purposes.

## Comments Later

- Comment period ends Thursday, June 15
- Submit written comments to:

NIST Master Plan Comments  
National Institute of Standards & Technology  
100 Bureau Drive, MS-1900  
Gaithersburg, MD 20899-1900

*Or*

[nistMPcomments@nist.gov](mailto:nistMPcomments@nist.gov)

A summary of this presentation will be available at:

<https://www.nist.gov/ofpm/nist-gaithersburg-master-plan>