

Semantic Conformance Testing Methodology and initial Results for Fingerprint Minutia Encoding

Christoph Busch

Fraunhofer IGD / Hochschule Darmstadt, Germany

joint work with:

Dana Hejtmankova, Elham Tabassi, Patrick Grother
Wolfgang Krodel, Lars Neumann, Thimo Ruhland,
Michal Dolezel, Ulrike Korte



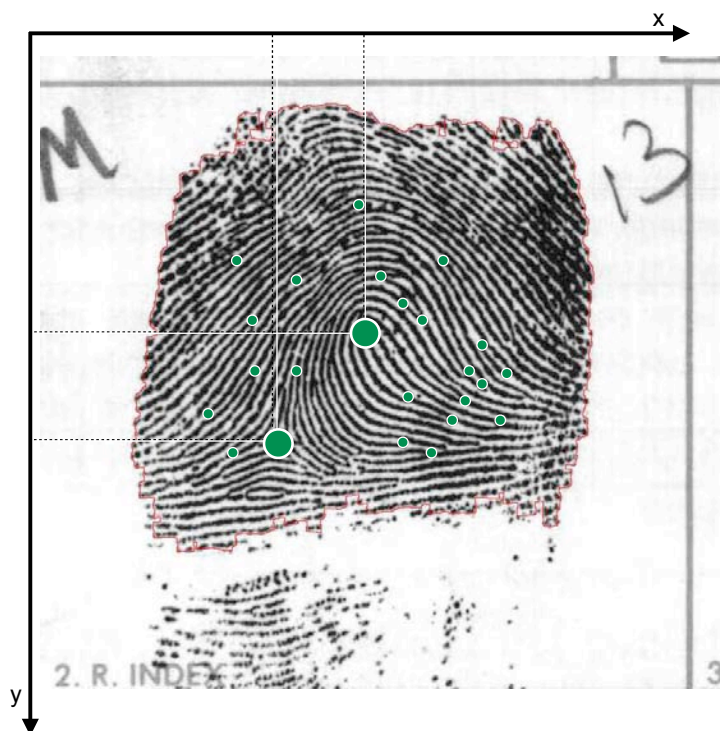
Bundeskriminalamt



Bundesamt
für Sicherheit in der
Informationstechnik

Properties of Finger Minutiae Detectors

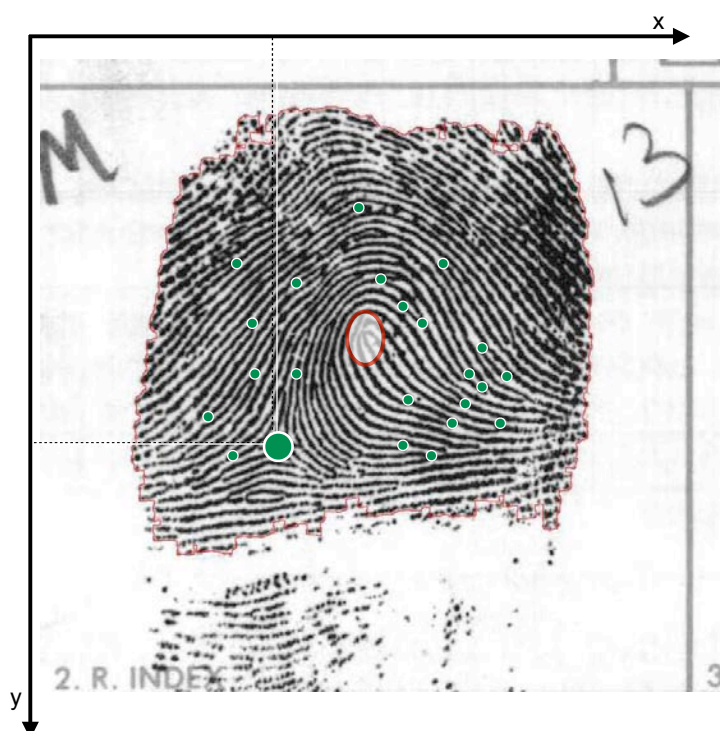
Encoding the Minutia Format



When a ISO 19794-2 compliant **feature extractor** processes a biometric fingerprint image he generates a minutiae **template**.

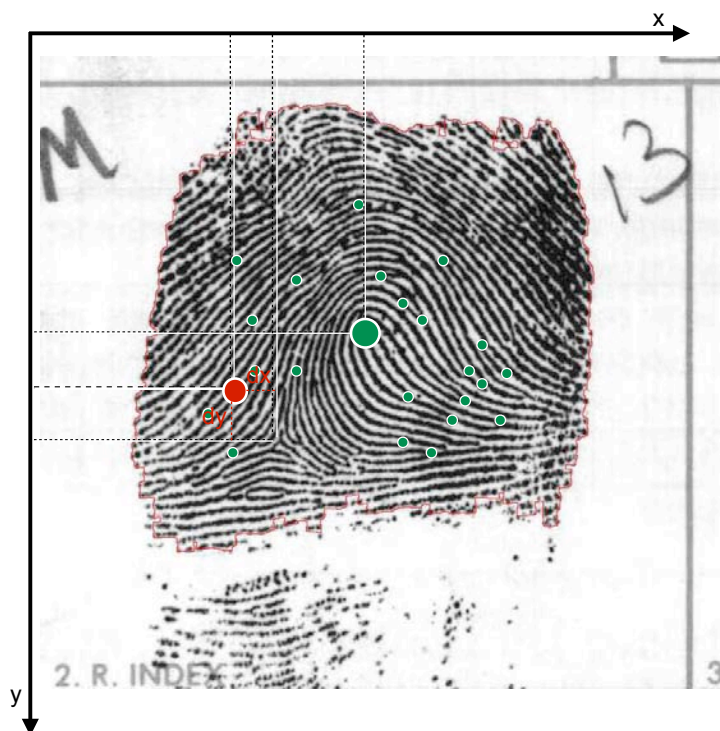
We will find the location for the core and for the delta and for many other minutiae.

Deficiencies of the Minutia Encoder



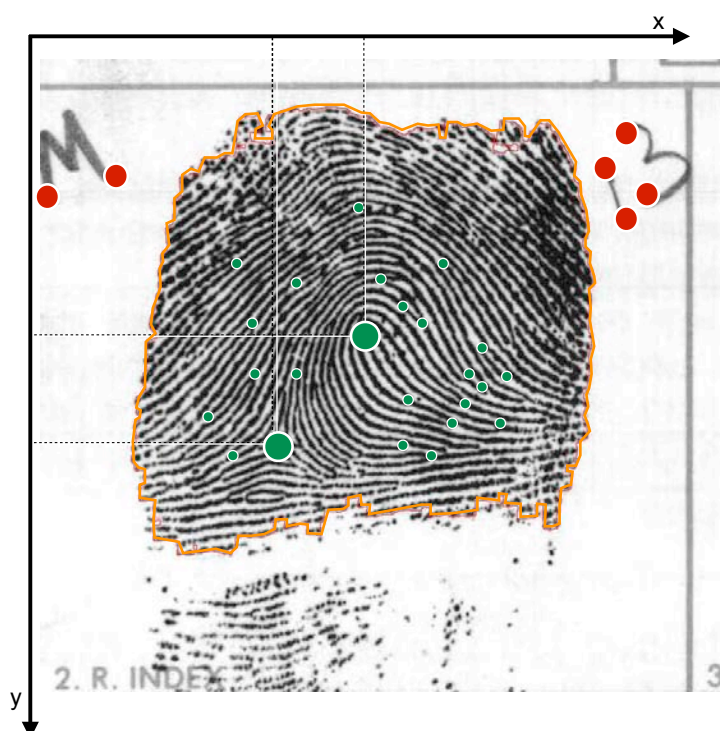
Unfortunately sometimes a **feature extractor** does **not** detect a landmark and thus relevant information is missing in the minutiae **template**.
(**sandstorm** problem)

Deficiencies of the Minutia Encoder



In other cases a **feature extractor** fails to **properly** detect a landmark and thus encodes the feature at a **dis-located** position in the **template**. (**fata morgana** problem)

Deficiencies of the Minutia Encoder



Furthermore some **feature extractor** does **not concentrate** to the region of interest and thus detect **spurious** minutiae **out of area** or at the border of the imprint (**globalisation** problem)

Conformance Testing Methodology of Finger Minutiae Detectors

Conformance Testing

Conformance testing is defined in a dedicated standard

- ISO/IEC IS **29109-1** Information technology — Conformance testing methodology for biometric data interchange formats defined in ISO/IEC 19794 — Part 1: **Generalized conformance testing methodology**
- ISO/IEC **FDIS 29109-2** Information technology — Conformance testing methodology for biometric data interchange formats defined in ISO/IEC 19794 - Part 2: **Finger minutiae data**
- ISO/IEC 29109-1 formulates the relevant test type „A“:
 - ▶ attesting that a unit is generating conformant biometric data interchange records.
 - ▶ in the case of fingerprint data this tests will verify that a unit (e.g. a minutia extraction algorithm) can create finger minutiae data records (templates) from appropriate fingerprint image data.

Level of Conformance Testing

There are various level of conformance tests:

- Level 1 Basic Data Field Testing:
 - ▶ all data fields exist properly (e.g.in the correct encoding.)
- Level 2 Internal Consistency Testing:
 - ▶ all data fields are filled with meaningful values and the fields are internally consistent.
- Level 3 Semantic Testing:
 - ▶ a semantic test to verify that a generated biometric data interchange record is a **faithful representation** of the initial digital representation.

Semantic Conformance Testing

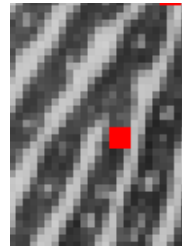
For fingerprint minutiae data

- template consists of **automatically** generated minutiae (*agm*)
 - ▶ *agm*'s are encoded by an implementation under test (IUT)
- semantic test to be covered by ISO/IEC 29109-2 AMD1
- semantic conformance is assessed by three rates:
 - ▶ 1.) Test for the **sandstorm** and the **fata morgana** problem:
 - Is the for every ground truth minutia (*gtm*) in the vicinity an automatically generated minutia (*agm*) in the template?
 - ▶ 2.) Test for the **out-of-area** problem (false minutia):
 - How many automatically generated minutiae (*agm*) are placed outside or at the border of a fingerprint area?
 - ▶ 3.) Test for **spurious** minutiae in the fingerprint area:
 - How many automatically generated minutiae (*agm*) do not have a mate in the *gtm*-set

Proposed Testing Methodology

- Sandstorm and fata morgana *gtm*-test:

- ▶ The *gt*-minutiae assertion test yields a **first** conformance rate cr_{gtm}
 - indicating the proportion of elements in the set of *gt*-minutiae for which a **corresponding** minutia **exists** in the set of automatically generated minutiae,
 - such that values can be compared for each data field and differences can be measured.
 - the assertion requires the corresponding minutia to be in the **vicinity**.



bifurcation detected
dislocated as ridge ending

Proposed Testing Methodology

- Sandstorm and fata morgana *gtm*-test:

- ▶ An exclusive *gt*-minutiae assertion test yields a **first** conformance rate cr_{gtm}

$$cr_{gtm} = \frac{\sum_{i=1}^{ngtm} mcs_i}{ngtm}$$

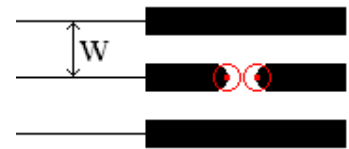
- where $ngtm$ is the number of elements in the *gtm* set
- and mcs_i is the minutia conformance score for the i -th *gt*-minutia that indicates the similarity between a *gtm* and the nearest minutia from the automatically generated minutiae set.
- ▶ The mcs is non-zero, if the distance d between the minutiae positions is within the tolerance bounds tol_d .

Proposed Testing Methodology

- Minutia conformance score

$$mcs = \begin{cases} 0 & \text{if } d > tol_d \\ 1 - p & \text{otherwise} \end{cases}$$

$$tol_d = \frac{W}{4}$$



- ▶ where p is a potential punishment $p = p_d + p_t$
 - dissimilarity in angle

$$p_d = \frac{|gtm - agm| \cdot 0,5}{\dots}$$

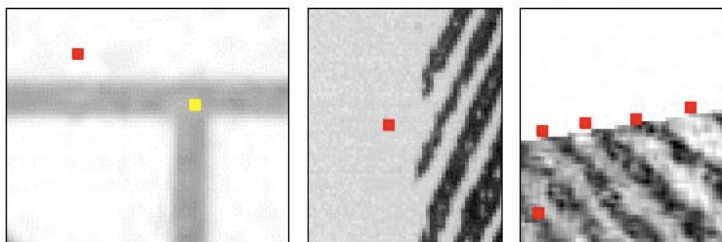
- dissimilarity in minutia type

$$p_t = \begin{cases} 0,25 & \text{if } t_{gtm} = t_{agm} \\ 0 & \text{otherwise} \end{cases}$$

Proposed Testing Methodology

- **Out-of-area** *agm*-test:

- ▶ identify the number of outside false minutiae (false minutiae)
- ▶ an inside-of-area *agm*-minutiae assertion test is yielding a **second** conformance rate cr_{agm} that is indicating the proportion of elements in the set of *agm* that are **inside** or at the borderline of the fingerprint area.



Proposed Testing Methodology

- **Inside-of-area** *agm*-test assertion:

- ▶ **second** conformance rate cr_{agm}

$$cr_{agm} = \frac{\sum_{i=1}^{n_{agm}} mps_i}{n_{agm}}$$

- ▶ where n_{agm} is the number of elements in the *agm* set and mps_i is the minutia position score for the i -th *ag*-minutia that indicates the homogenous distribution of *ag*-minutia with respect to the fingerprint area.
- ▶ metric will reflect a "punishment" for those *agm* that are on the borderline or outside the fingerprint area according

$$mps = \begin{cases} 0 & \text{if } agm \text{ is outside the fingerprint area} \\ 0,5 & \text{if } agm \text{ is at the borderline} \\ 1 & \text{otherwise} \end{cases}$$

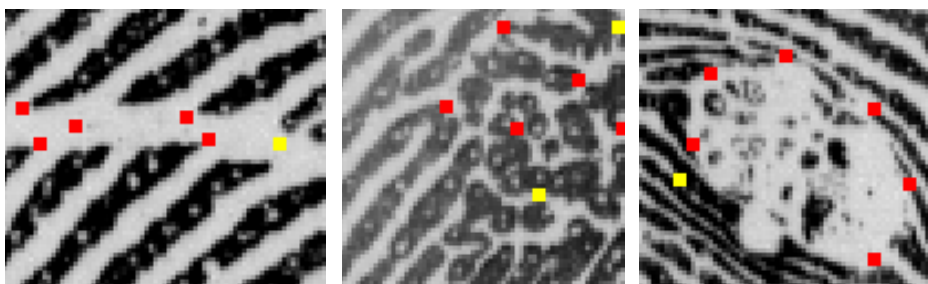
Proposed Testing Methodology

- **Spurious** *agm*-test:

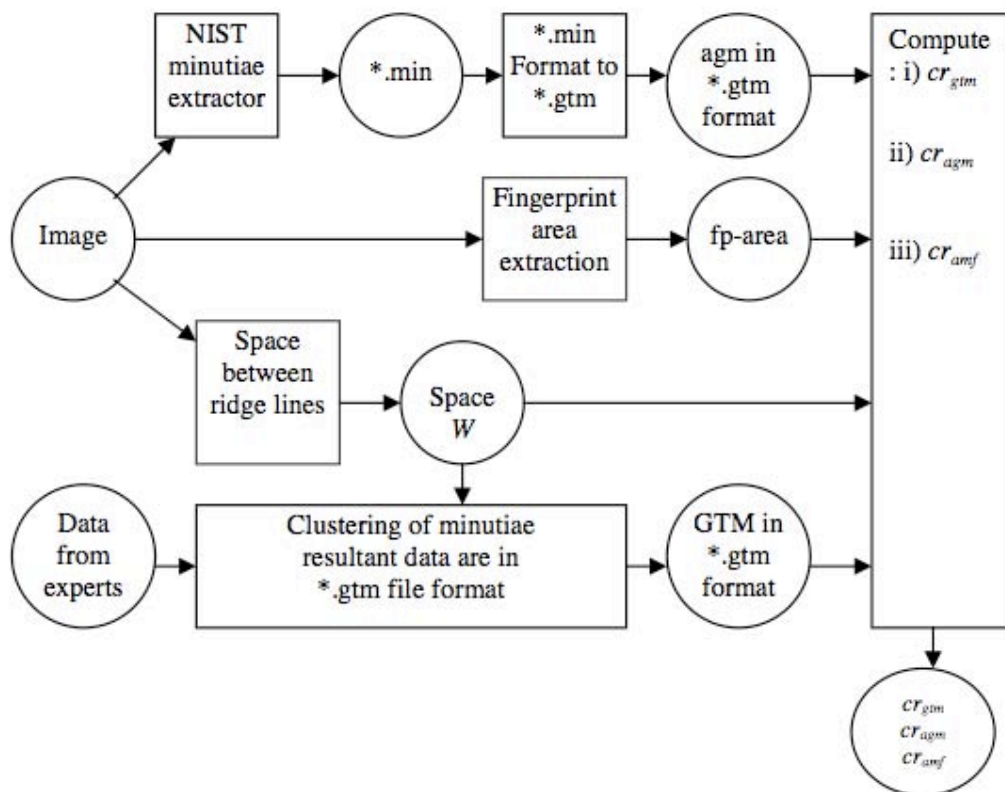
- ▶ The set of *agm* minutiae may contain **spurious** minutiae that are located **in** the fingerprint area
 - scars, bent skin, skin disease, dirt, etc.
- ▶ **third** conformance rate cr_{amf}

$$cr_{amf} = 1 - \frac{ni_{agm}}{n_{agm}}$$

- where ni_{agm} is the number of focused *agm* inside the fingerprint area, which does not correspond to any *gtm*.



Testing Methodology Process Flow



Composing Ground Truth Fingerprint Minutiae Database

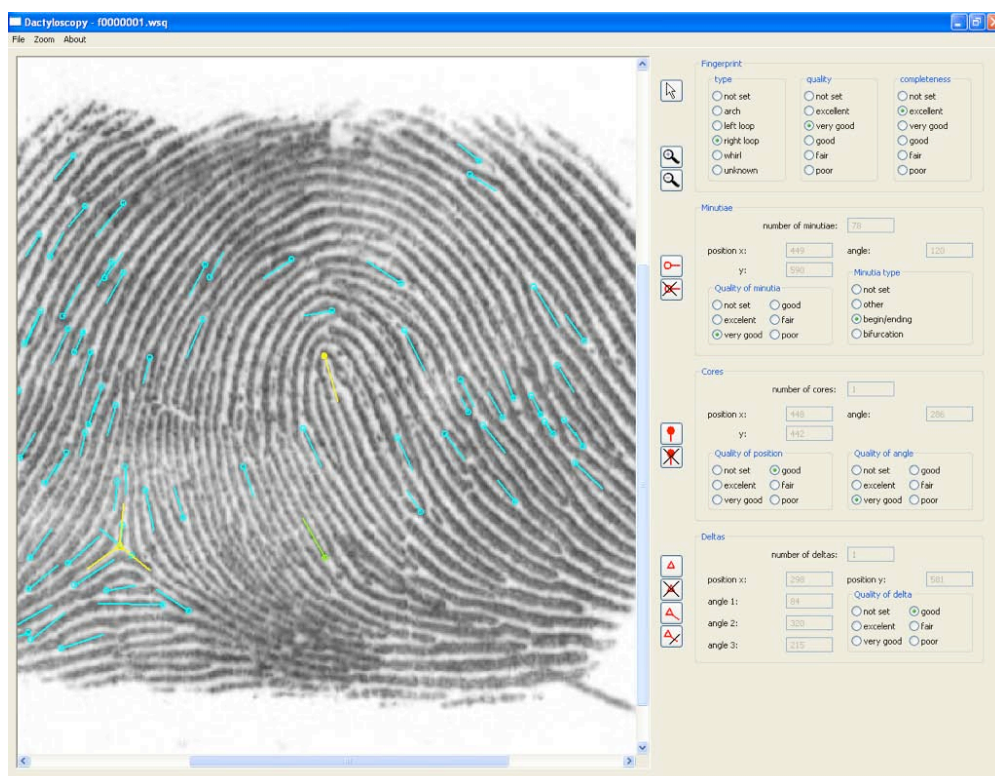
Semantic Conformance Testing

Challenge for implementing Semantic Testing:

- What is the „real minutia coordinate“?
- need for ground truth database (*gtd*) with minutiae data
 - ▶ need for public available fingerprint image data that is not restricted by privacy regulations
 - NIST special databases:
 - SD14 rolled data and mostly ink with few live scanned images
 - SD29 flat data /plain impression but all ink
 - ▶ need for dactyloscopic experts that define the truth!
 - Germany: Federal Criminal Police Office (BKA)
 - Australia: CrimeTrac (Andrew Wall)
 - Czech Republic: Criminalistic institute Prague
 - further volunteers?

Graphical User Interface

Ground Truth Minutia - GUI



Composing a Ground Truth Database

Ground Truth Minutia - data records

Data fields in *italics* are defined in correspondance to ISO 19794-2:2005

Data field	Description
Pattern type	1st Level classification according to the following Classification Codes: A = Arch; L = Left Loop; R = Right Loop; W = Whirl; U = Unknown.
Sample quality level	The level of difficulty to analyze the fingerprint is assessed as sample quality level according NFIQ[2] ranging from 1 "excellent", 2 "very good", 3 "good", 4 "fair" down to 5 "poor".
Sample completeness level	The level of completeness of the finger pattern.
<i>Minutia type</i>	The type can be ridge ending, ridge bifurcation or other (undetermined).
<i>Minutia Position</i>	The coordinates of the minutia (horizontal X and vertical Y).
<i>Minutia Angle</i>	Absolute angle of the minutia.
<i>Minutia Quality</i>	The quality figure for both position and angle.
<i>Number of Cores</i>	The number of core points represented.
<i>Core Position</i>	The coordinates of the core.
Core Position Quality	The quality (accuracy) figure.
<i>Core Angle</i>	The angle of the core is recorded.
Core Angle Quality	The quality (accuracy) figure.
<i>Number of Deltas</i>	The number of delta points represented.
<i>Delta Position</i>	The coordinates of the delta.
<i>Delta Angle</i>	The three angle attributes of the delta.
Delta Quality	The quality figure for both position and angle.

Composing a Ground Truth Database

Database Segments

- GTD-1: NIST SD14/SD29 selection
 - ▶ progress at BKA operation
 - Team of 11 dactyloscopic experts working partime on the Ground Truth Database
 - Approx. 1500 fingerprint images with 3 opinions as of January 15, 2010
- GTD-2: Latent fingerprints from crime scenes
 - ▶ operation to be started in April 2010
 - ▶ based on ELFT-EFS latent data
- GTD-3: Live prints
 - ▶ preparation work

Benefit of a Ground Truth Minutiae Database

Benefit of a Ground Truth Database

Database can serve for many purposes

- providing the ground for **development** of a semantic conformance test methodology
- providing the ground for semantic conformance **tests** according ISO 29109-2 AMD1
- providing the ground for development and calibration of fingerprint image sample quality metrics
 - NFIQ2-development and training
- providing the ground for dactyloscopic training software

Technical Challenges

Technical Challenges

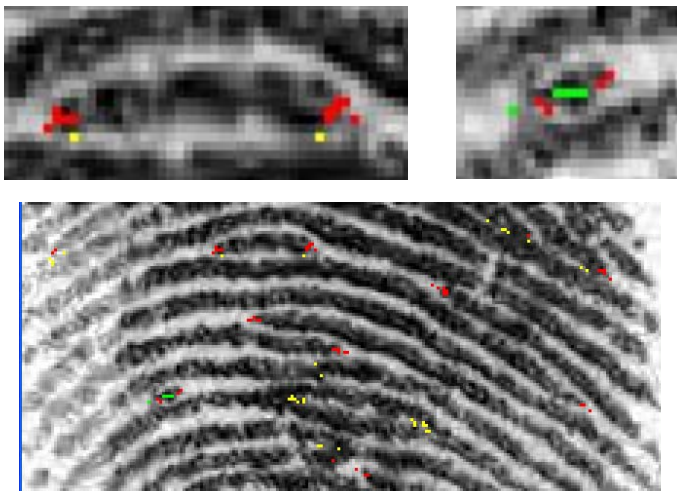
Strong impact on conformance rate by two factors

- minutiae clustering method
- fingerprint area definition

Technical Challenges

Clustering Minutiae Data

- Fusion of expert markup is a non-trivial task
 - ▶ the number of **clusters** (minutiae) is **unknown**
 - ▶ the number of **experts** - contributing to one cluster - is also **unknown**.

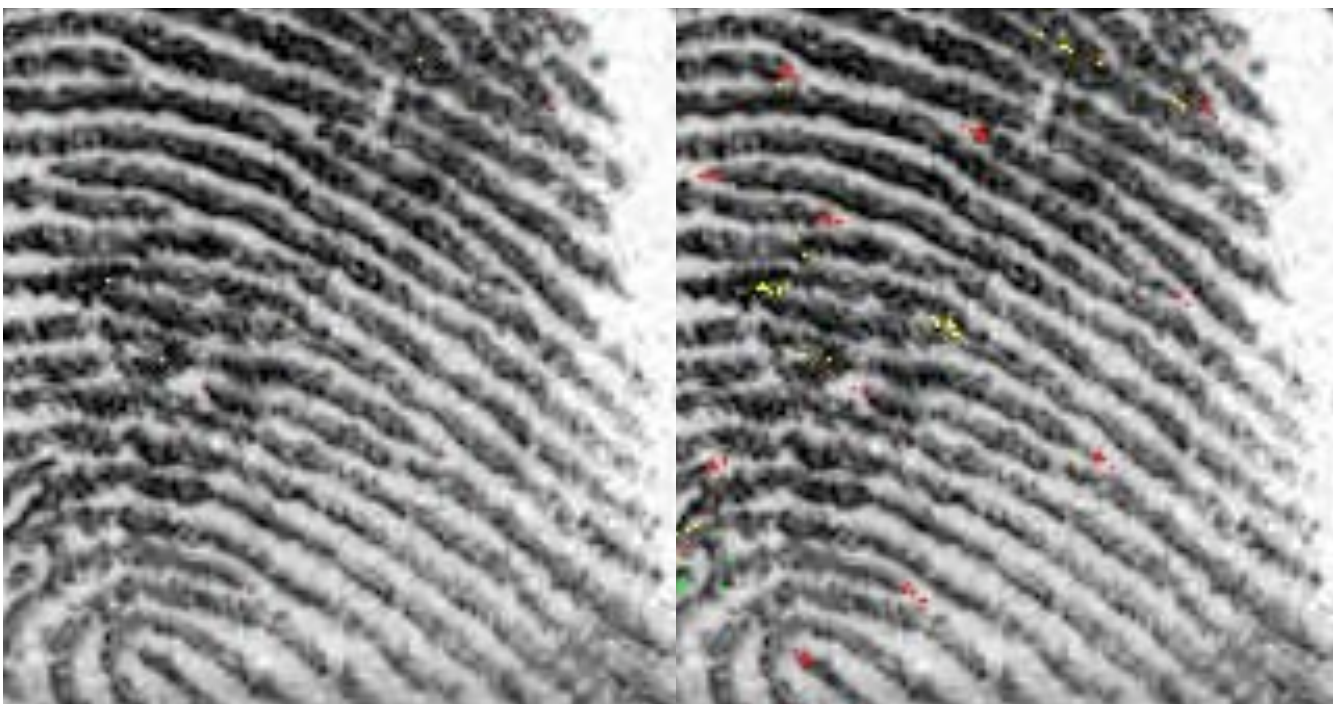


Clustering Minutiae Data

Automated Generated Minutia vs. Ground Truth Minutia

AGM - NIST mindtct

GTM



Clustering Minutiae Data

Identify cluster members

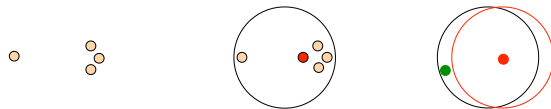
- Minutiae **pairs**, where:
 - ▶ Each minutiae has been placed by different expert.
 - ▶ The distance between minutiae is less or equal than $W/2$ (minutiae inside a circle with radius $W/4$).
- **Triplets** from minutiae pairs, where:
 - ▶ Pairs have one same (joint) minutiae + prev. cond.
 - ▶ Until n-tuples (n is number of experts).



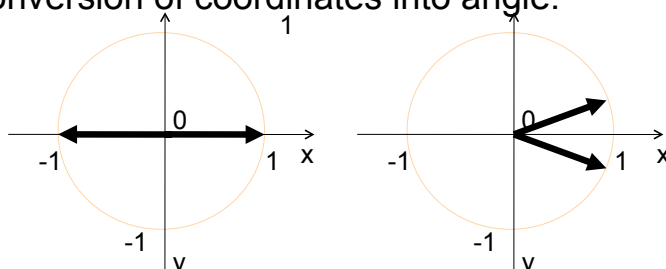
Clustering Minutiae Data

Identify consensus

- Average position $X_{GTM} = \frac{\sum_{i=1}^{ngtm} x_i}{ngtm}$, $Y_{GTM} = \frac{\sum_{i=1}^{ngtm} y_i}{ngtm}$



- Average type - UNKNOWN, if less than 2/3 consensus
- Average angle
 - ▶ Conversion of angles into coordinates.
 - ▶ Computation of average coordinates.
 - Less than 1/3 of length means UNKNOWN.
 - ▶ Conversion of coordinates into angle.



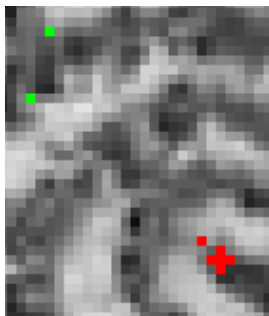
Clustering Minutiae Data

Identifying Reliable Minutiae Clusters

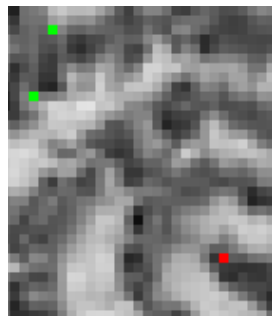
- How many experts identified this minutiae and how confident are they (quality of minutiae)?

$$q_{cl} = \frac{\sum_{i=1}^{ncl} q_i}{nexp}$$

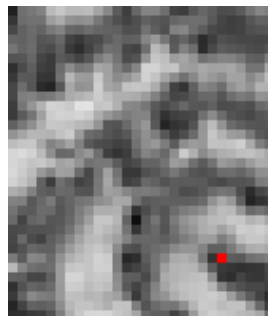
- ▶ where q_i is the minutia quality of the i -th minutia in the cluster, ncl is the number of minutia in that cluster and $nexp$ is number of experts processing this image.



gtm from 11 experts



All cluster centers

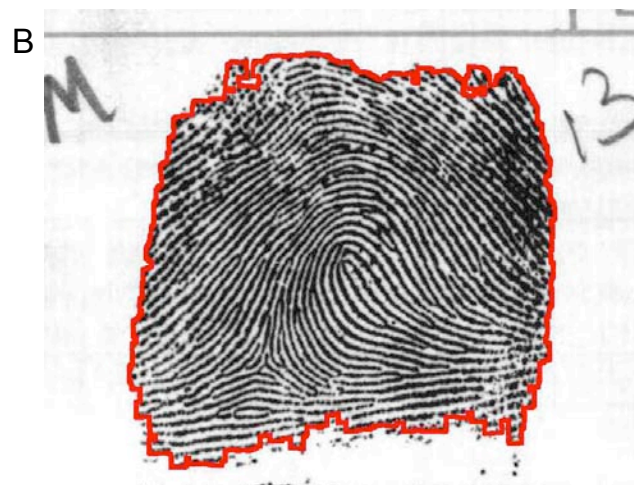
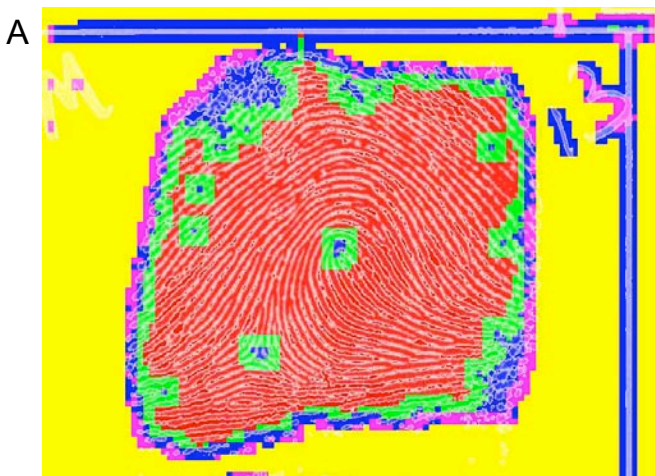


Most reliable cluster centers

Fingerprint Area Detection

Currently semi-automatic procedure






- A) segmentation according area quality of mindtct
- B) segmentation based on block-based gabor filter response
 - ▶ Shen et al. *Quality Measures of Fingerprint Images*
 - ▶ Alonso-Fernandez et al. *An Enhanced Gabor Filter-Based Segmentation Algorithm for Fingerprint Recognition Systems*

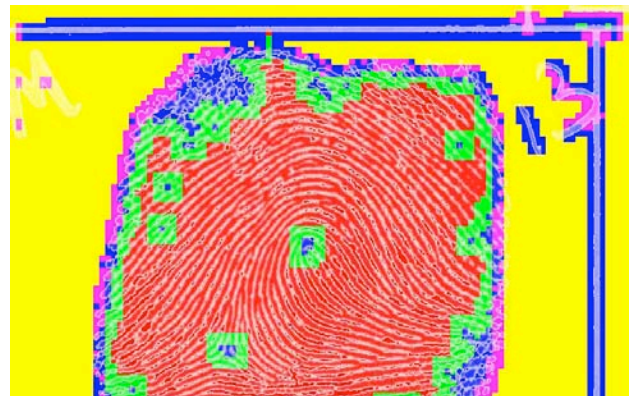


Fingerprint Area Detection

Currently semi-automatic procedure

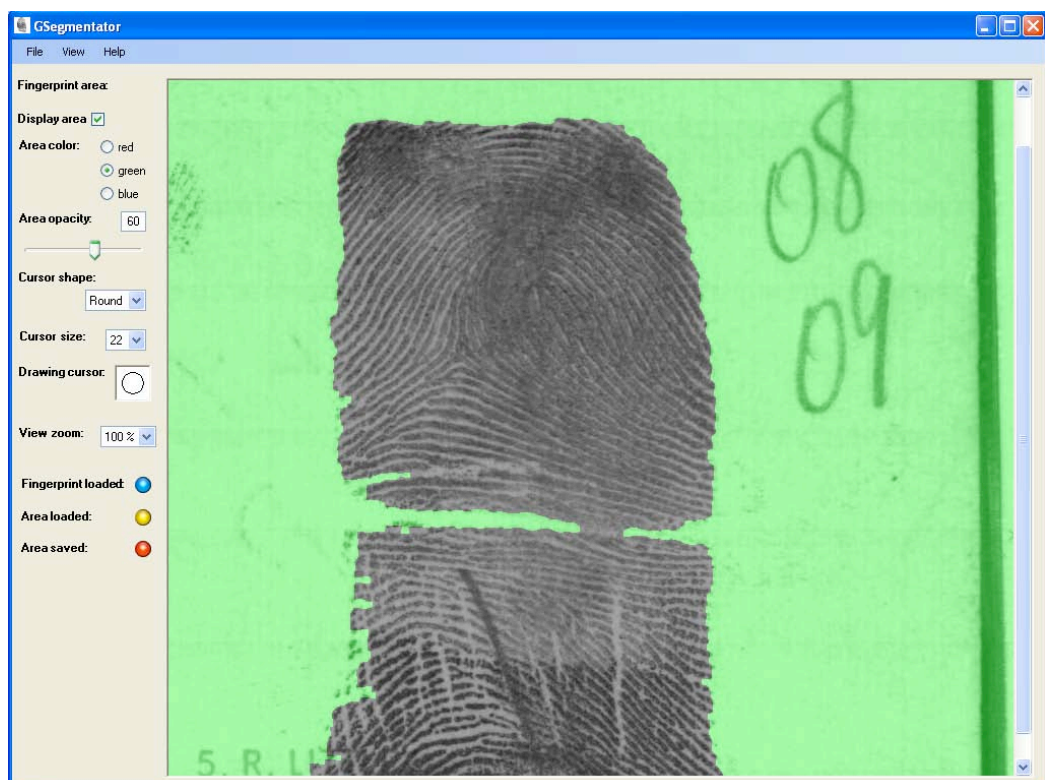
- segmentation according area quality of mindtct

Qual.	Color	Description
0/F:		low contrast OR no direction
1/D:		low flow OR high curve (with low contrast OR no direction neighbor) (or within NEIGHBOR_DELTA of edge)
2/C:		low flow OR high curve (or good quality with low contrast/no direction neighbor)
3/B:		good quality with low flow / high curve neighbor
4/A:		good quality (none of the above)



Fingerprint Area Detection

Manual inspection



Organisation Challenges

Challenges for the Ground Truth Database

Issues

- Synchronize work with progress of ISO 29109-2 AMD1
- Ground-Truth Database (gtd)
 - ▶ Identify more institutions from various dactyloscopic cultures contributing to the entire set
 - ▶ Keep the ground truth data **confidential**
 - NDAs with contributing institutions
 - The **public** fraction should contain approx. 30 percent of the total data and will be available in the public domain.
 - The **sequester** fraction will be provided under strong restriction to testing institution only
 - ▶ ISO/IEC JTC1 SC37 WG3 need to establish a procedure to authorize testing institution to receive a copy of the sequester database.

Initial Test Results

Test Results

Results BIOSIG 2009

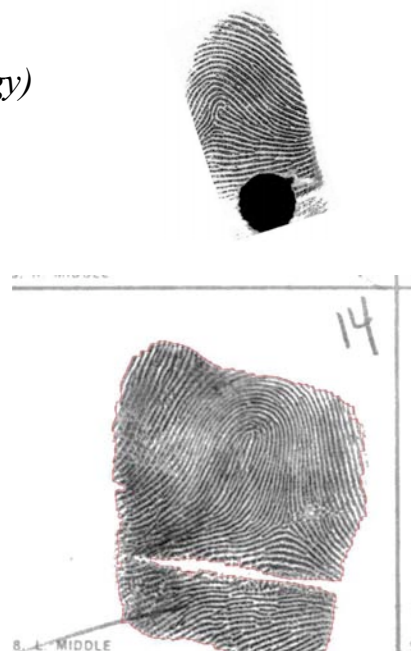
- 17 images, max 11 experts each
- average *ngtm*: 59
- average *agm*: 100 (for NIST mindtct)

conformance rates	CF_{gtm}	CF_{agm}	CF_{amf}
average	0,353	0,885	0,662
std. deviation	0,179	0,066	0,178

Test Results

Results BioKey 2010

- Available ground truth data approx. 1000 images
- Dependency of the database
 - ▶ $cr = f(\text{minutiae-extractor}, db, \text{ct-methodology})$
- Data set reduced (filtered) in cases
 - ▶ when less than 3 experts markups were available
 - ▶ where images showed archive artifacts
 - ▶ with two imprints in the image
- Data set not reduced
 - ▶ where images showed second phalanx
 - second phalanx is considered as part of the fingerprint area



Test Results

Results BioKeyS 2010

- 3 experts opinions each for 975 images (733 used)
 - ▶ SD14: 486 images / SD29: 247 images
- SD14 average *ngtm*: 76 (min 7 / max 174)
- SD14 average *agm*: 201 (min 87 / max 366) (NIST mindtct)

conformance rates	Cr _{gtm}	Cr _{agm}	Cr _{amf}
average	0,464	0,857	0,645
std. deviation	0,092	0,063	0,123

- Generating this result was kindly supported by the German BSI under the BioKeyS-Pilot-DB project

Open Issues

Other deficiencies of extractors

- How to deal with Failure-to-eXtract
 - ▶ contribution with a $cr=0$

Respecting the minutia type

- ▶ if minutia type is „other“ we should not analyze the orientation

Conclusion

- Conformance testing essential step in system selection
- Semantic conformance testing requires ground truth data
- Further datylosopic experts groups welcome
- Testing methodology under development
 - ▶ fusion of conformance rates
 - ▶ thresholds for the conformance rate
- Further data segments addressed soon

Further Information

on Semantic Conformance Testing

- On March 5, at 11:30 a session on fingerprint feature markup and testing will be held.
 - ▶ This workshop will discuss work in this area, interoperability, reference datasets, and the possibilities for semantic conformance testing.
- Publications:
 - ▶ C. Busch, D. Lodrova, E. Tabassi, W. Krodel: "Semantic Conformance Testing for Finger Minutiae Data", in Proceedings of the IEEE International Workshop on Security and Communication Networks (IWSCN), Trondheim, ISBN 978-82-997105-1-0, pages 17-23, (2009)
 - ▶ D. Lodrova, C. Busch, E. Tabassi, W. Krodel, M. Drahansky: „Semantic Conformance Testing Methodology for Finger Minutiae Data“, in Proceedings BIOSIG 2009, (2009)
- Website with information on the topic
 - ▶ <http://www.igd.fraunhofer.de/~busch/gtd>

Thank you for your attention
and many thanks
to the dactyloscopic experts
contributing to the
ground truth database



Prof. Dr. Christoph Busch

Department
Security Technology

Fraunhoferstrasse 5
64283 Darmstadt, Germany
Phone: +49-6151-155-536
christoph.busch@igd.fraunhofer.de
www.igd.fraunhofer.de/~busch