

# Update

## Camp Fire – NETTRA

*Notification, Evacuation, Traffic, and Temporary Refuge Areas*

### ***NIST WUI FIRE DAYS 2022***

Alexander Maranghides

Eric Link

Ruddy Mell (USFS)

Steven Hawks (CAL FIRE)

Chris Brown

Doug Walton (University of Maryland)



Photo courtesy of CAL FIRE



# 192 Contributors — THANK YOU!

Office of the State Fire Marshal

Law Enforcement

Emergency Medical Services

Damage Inspectors (DINS)

Town of Paradise

National Weather Service

Data Collectors

Transportation

Reviewers

Fire Departments

Water Districts

Public Affairs Office

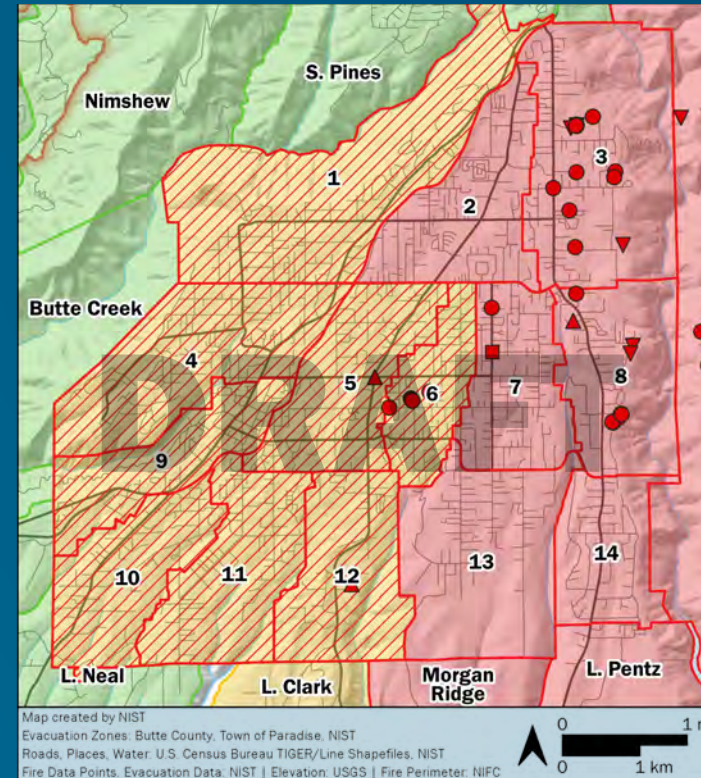
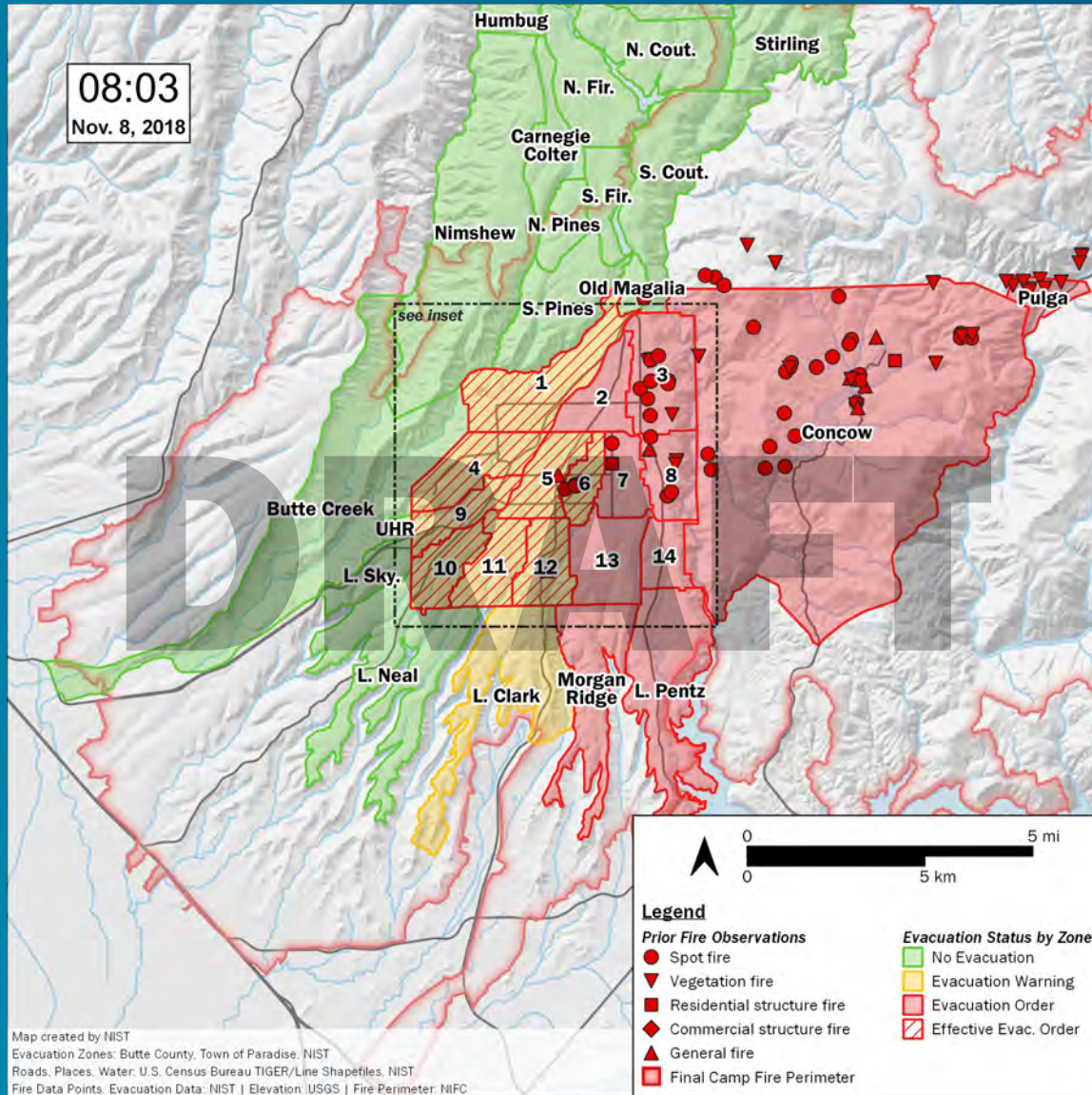


# NETTRA Outline – Highlights

- Roadway Characteristics
- Pre-fire Notification and Evacuation Plans
- Emergency Notification Timeline
- Evacuation and Traffic Flow
- Burnovers
- Temporary Refuge Areas (TRA)
- Rescues



# Evacuation Orders and Notifications



Evacuation orders integrated with fire progression



# Roadway Characteristics and Evacuation Traffic

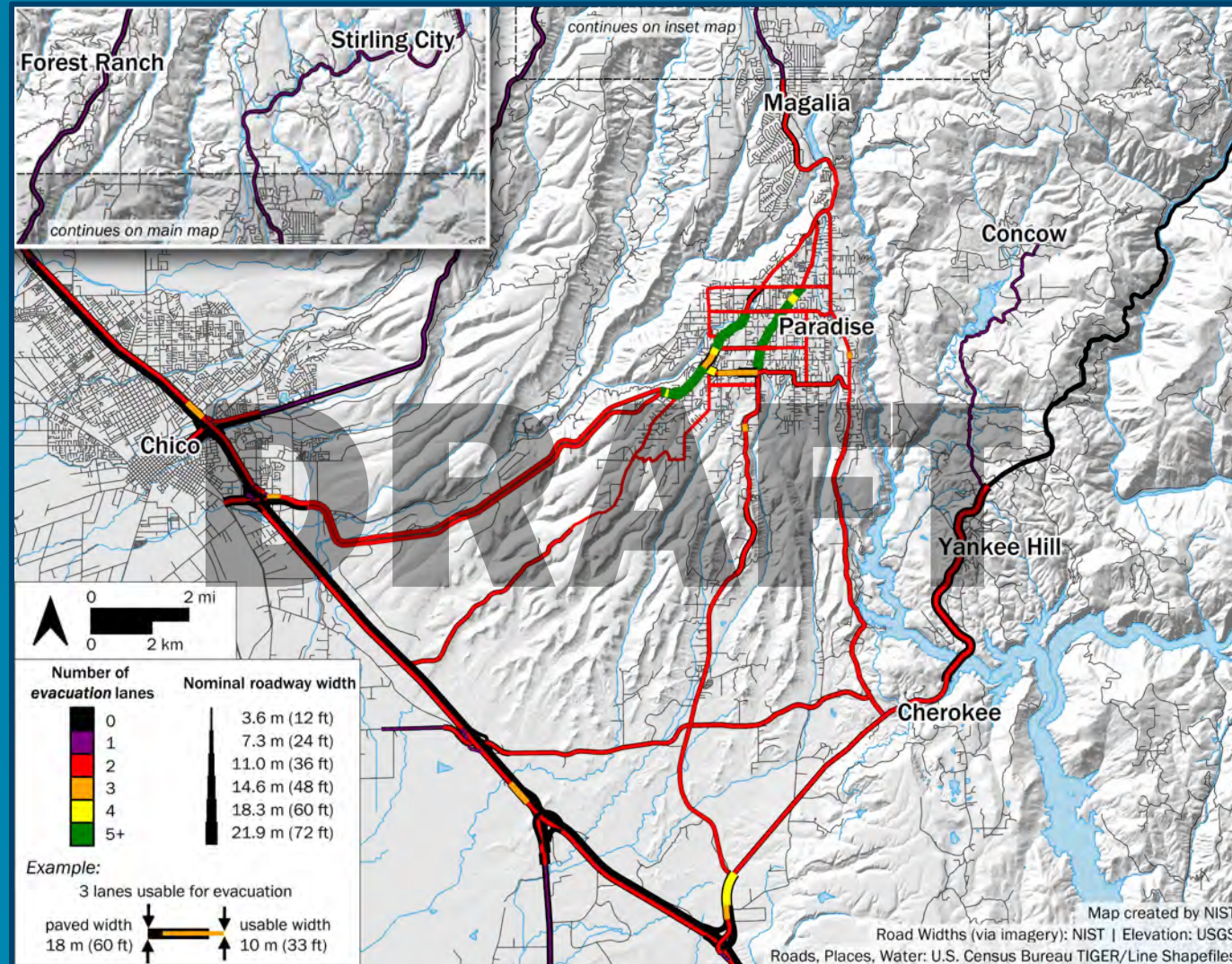
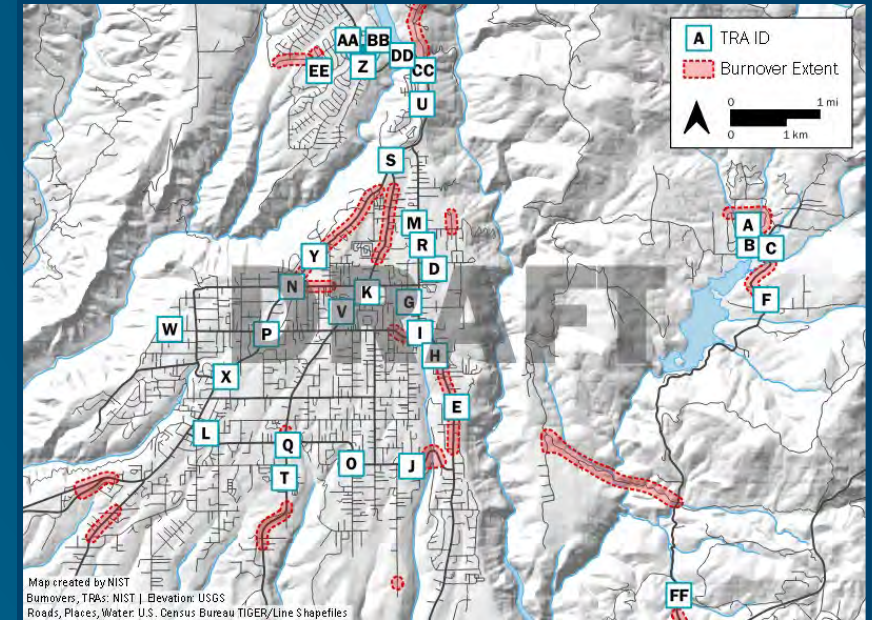
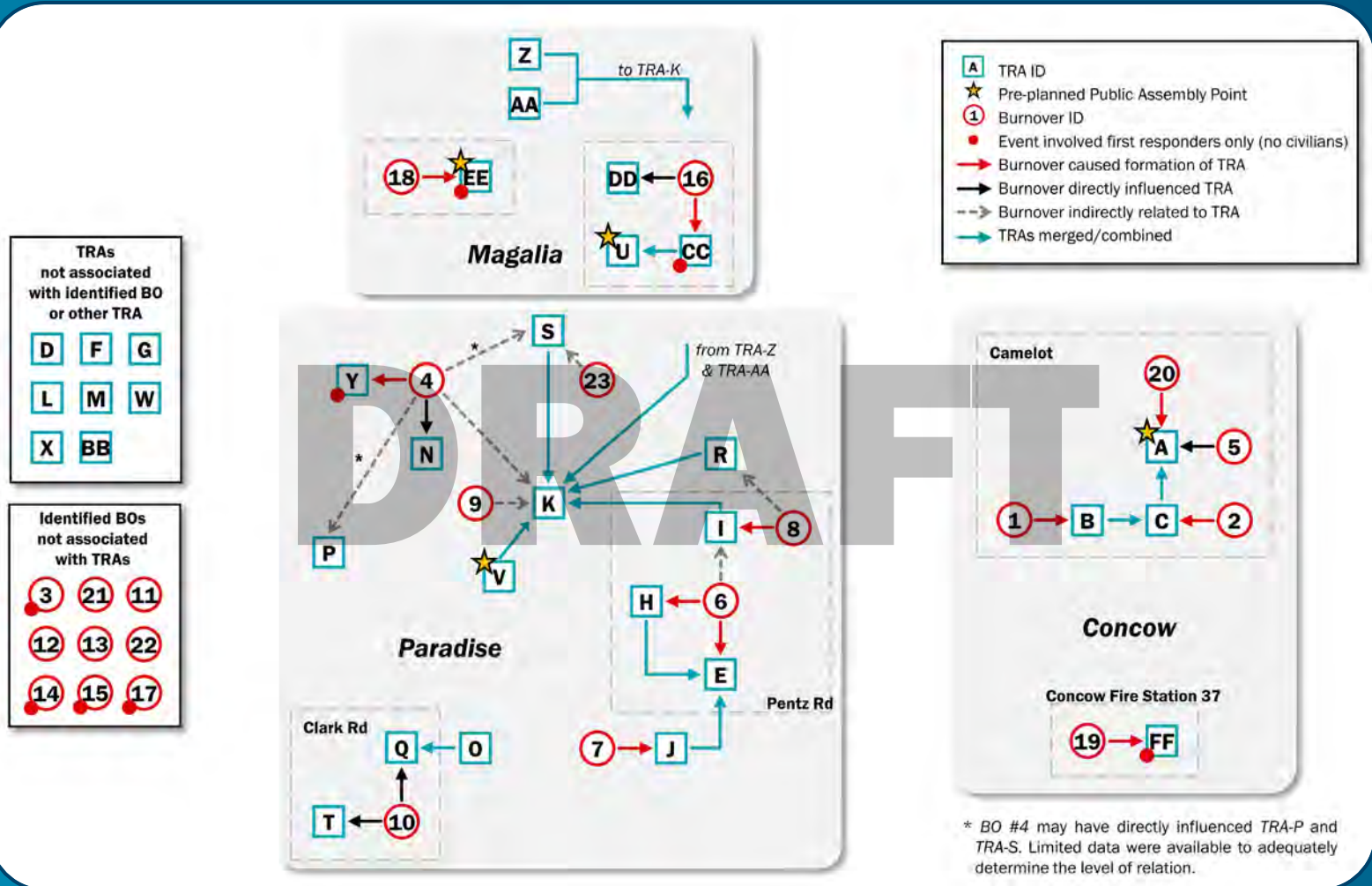


Photo courtesy of Paradise Police Department

Traffic integrated with fire progression



# Temporary Refuge Areas (TRAs)

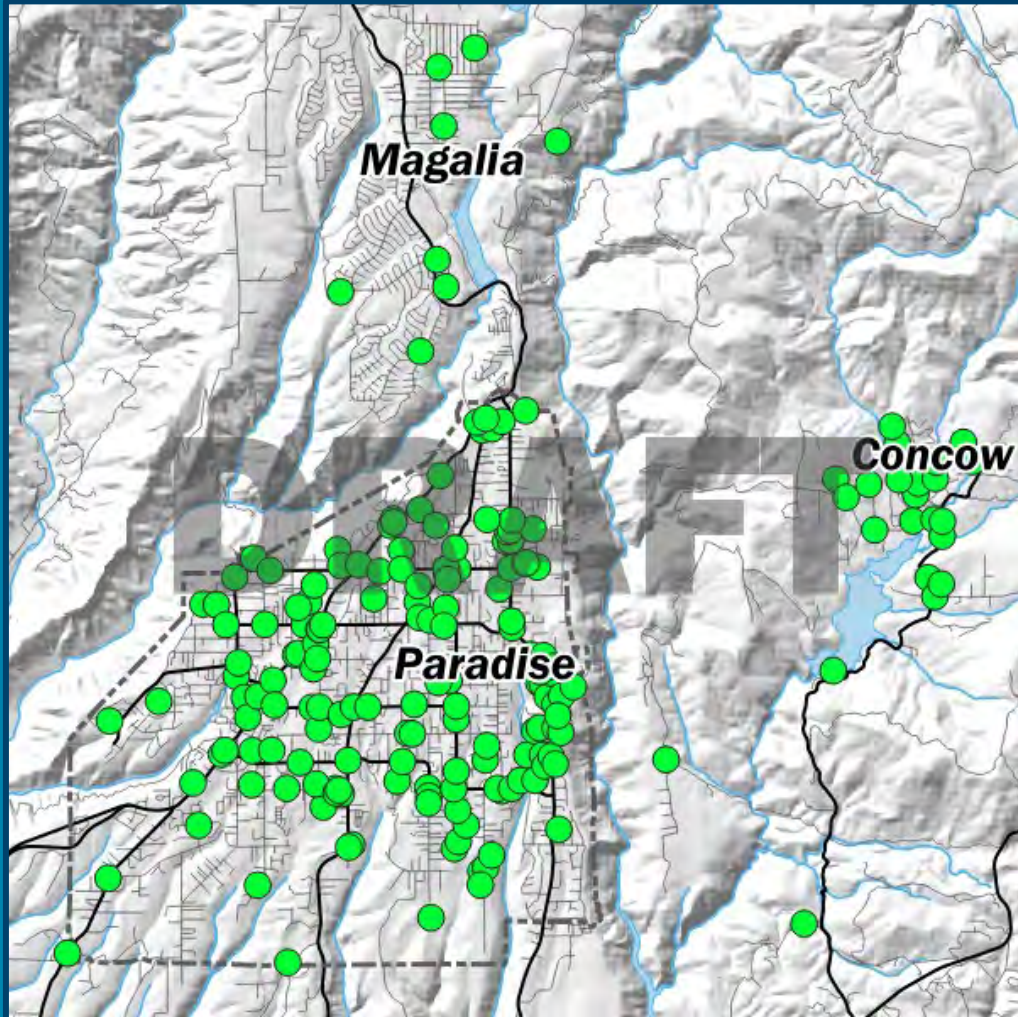


TRAs integrated with burnovers and evacuation

\* BO #4 may have directly influenced TRA-P and TRA-S. Limited data were available to adequately determine the level of relation.



# Rescues



Rescues integrated with TRAs  
and evacuations

