

# **Cognitive Sources of Error** **and Ways to Minimize Them**

**Dr. Itiel Dror**

University College London

Cognitive Consultants International

[i.dror@ucl.ac.uk](mailto:i.dror@ucl.ac.uk)

[www.cci-hq.com](http://www.cci-hq.com)

# Cognitive Sources of Error

- Errors are good! (not in real casework...)
- They are an important tool for learning!
  1. To identify when they happen
  2. To measure them
  3. To understand why they occur
  4. To take steps to minimize them
  5. To learn from them! → Induce error!

# Cognitive Sources of Error



# Cognitive Sources of Error



**Forensic science**

## **Ignorance is bliss**

Forensic scientists know too much about the cases they investigate



# Cognitive Sources of Error

2011; 33: 34–38

MEDICAL  
TEACHER

A novel approach to minimize error in the medical domain: Cognitive neuroscientific insights into training\*

ITIEL DROR

University College London, UK

- Reducing medical errors not by acknowledging them and trying to avoid them...
- But by giving memorable error experiences!



# Cognitive Sources of Error and Ways to Minimize Them

2011; 33: 34–38

MEDICAL  
TEACHER

A novel app  
medical do  
insights into

ITIEL DROR

University College London, U



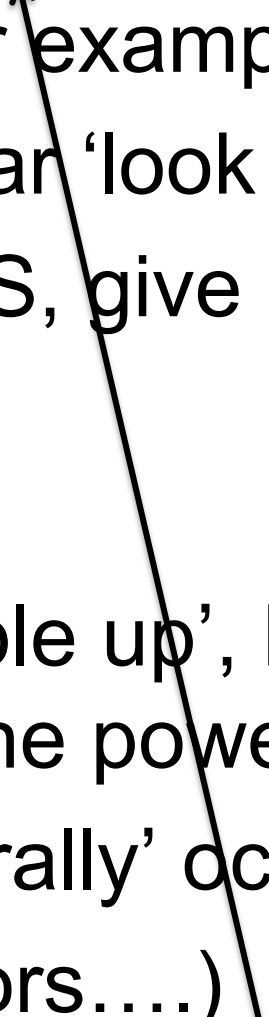
in the  
scientific

- Reducing  
acknowled  
them...

avoid

- But by giving memorable error experiences!

# Cognitive Sources of Error and Ways to Minimize Them

- In the forensic domain, for example:
    - In verification give similar ‘look alike’...
    - In technology, e.g., AFIS, give a match lower down the list
  - ‘sabotage’
  - Not intended to ‘set people up’, but to make effective learning, utilizing the power of errors
  - And, of course, use ‘naturally’ occurring errors.  
(if you want to minimize errors....)
- 

# Cognitive Sources of Error and Ways to Minimize Them





# Cognitive Sources of Error and Ways to Minimize Them



# Cognitive Sources of Error

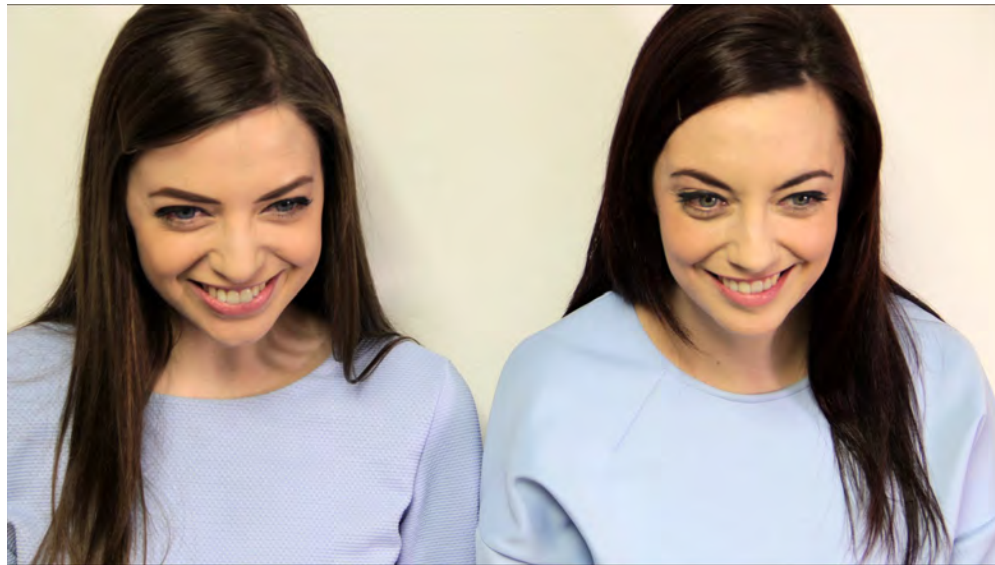
- ‘Bias’, ‘cognitive’, ‘neuroscience’  
→ Everyone is talking about it  
(not only in forensic science)
- But not many really understand it  
or, how to relate & translate it
- “A wild goose chase”, “like trying to nail jelly to  
the tree”.



# Cognitive Sources of Error

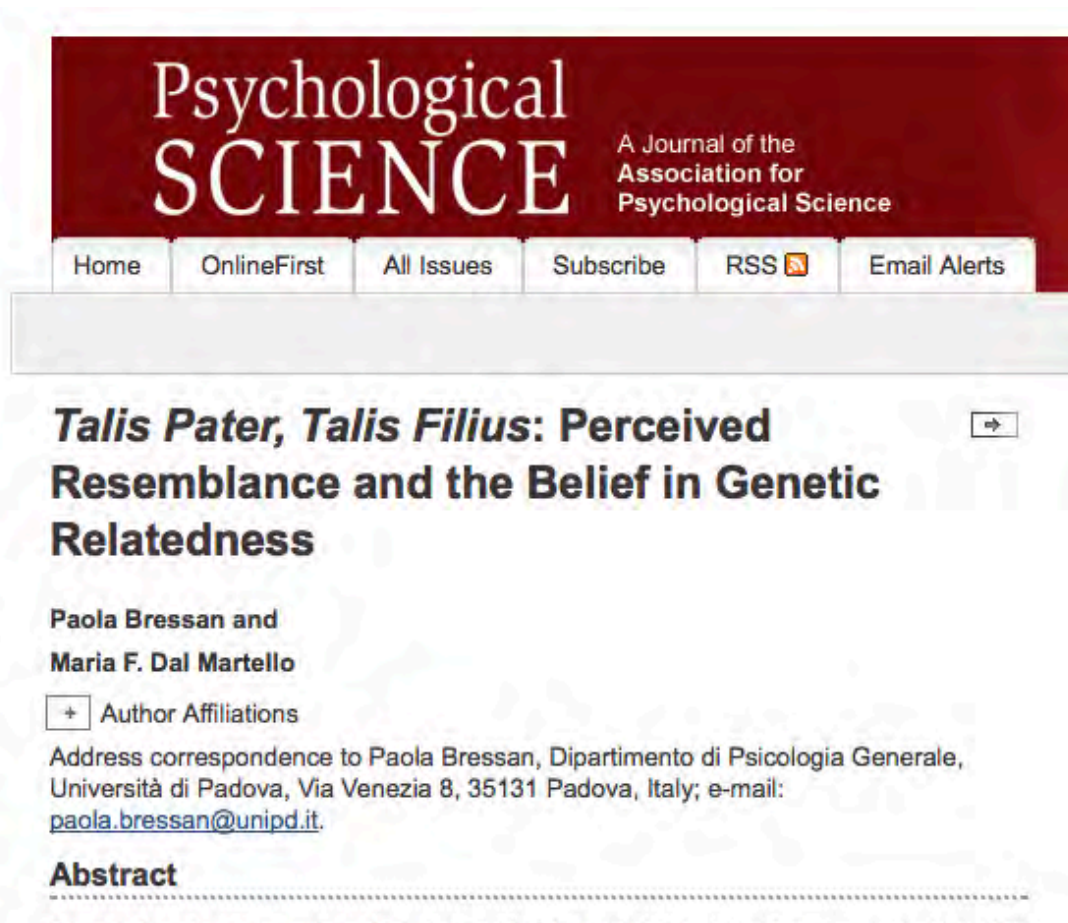
- A few very basic points:
  1. What is bias...?

# Cognitive Sources of Error




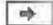
How similar are they? → Based on the faces!

# Cognitive Sources of Error




Psychological  
**SCIENCE**  
A Journal of the  
Association for  
Psychological Science

Home OnlineFirst All Issues Subscribe RSS  Email Alerts

***Talis Pater, Talis Filius: Perceived Resemblance and the Belief in Genetic Relatedness*** 

Paola Bressan and  
Maria F. Dal Martello

 Author Affiliations

Address correspondence to Paola Bressan, Dipartimento di Psicologia Generale,  
Università di Padova, Via Venezia 8, 35131 Padova, Italy; e-mail:  
[paola.bressan@unipd.it](mailto:paola.bressan@unipd.it).

**Abstract**

---

How similar are they? → Based on the faces!

# Cognitive Sources of Error



How similar are they? → Based on the faces!

# Cognitive Sources of Error

- A few very basic points:

1. What is bias...?

2. Although bias is everywhere...

It does not mean it necessarily leads to error!

→ Should we consider it, worry about it?

→ YES!

Does it justify action across the board, or just in the ‘bias danger zone’ (‘Triage Approach’)?

→ For you to consider!

But... through understanding!

# Cognitive Sources of Error

- What are the 'cognitive sources' of error?...
  - Many.....
  - (not only bias.... bias is just one of many)



# Cognitive Sources of Error

## Cognitive Sources of Errors

1. Incompetent
  2. Unskilled
  3. Unfit for duty
  4. Cognitive bias
  5. Base rate
  6. Verification
  7. Overstating in court
- and more....

# Cognitive Sources of Error and Ways to Minimize Them

## Cognitive Sources of Errors

## Ways to Minimize Cognitive Errors

1. Incompetent
  2. Unskilled
  3. Unfit for duty
  4. Cognitive bias
  5. Base rate
  6. Verification
  7. Overstating in court
- and more....

# Cognitive Sources of Error and Ways to Minimize Them

<b>Cognitive Sources of Errors</b>	<b>Ways to Minimize Cognitive Errors</b>
1. Incompetent	Selection
2. Unskilled	Training
3. Unfit for duty	Fatigue, medication, +
4. Cognitive bias	Blinding, LSU
5. Base rate	TIP
6. Verification	...
7. Overstating in court	....
and more....	→ OSAC! 😊

# Cognitive Sources of Error and Ways to Minimize Them

## References:

- [Context Management Toolbox: A Linear Sequential Unmasking \(LSU\) Approach for Minimizing Cognitive Bias in Forensic Decision Making. \*Journal of Forensic Sciences\*, 2015, 60 \(4\), 1111-1112.](#)
- [Practical Solutions to Cognitive and Human Factor Challenges in Forensic Science. \*Forensic Science Policy & Management\*, 2014, 4, 105-113.](#)
- [The ambition to be scientific: Human expert performance and objectivity. \*Science and Justice\*, 2013, 53 \(2\), 81-82.](#)
- [Combating bias: The next step in fighting cognitive and psychological contamination. \*Journal of Forensic Sciences\*, 2012, 57 \(1\), 276-277.](#)
- [Meta-analytically quantifying the reliability and biasability of forensic experts. \*Journal of Forensic Sciences\*, 2008, 53\(4\), 900-903.](#)

# Cognitive Sources of Error and Ways to Minimize Them

**Dr. Itiel Dror**

University College London  
Cognitive Consultants International

[i.dror@ucl.ac.uk](mailto:i.dror@ucl.ac.uk)

[www.cci-hq.com](http://www.cci-hq.com)

**THANK YOU!**