
SCIENCE COMMUNICATION WORKSHOP

JUNE 2024

PERSPECTIVES FROM THE FOOTWEAR PRACTITIONER COMMUNITY

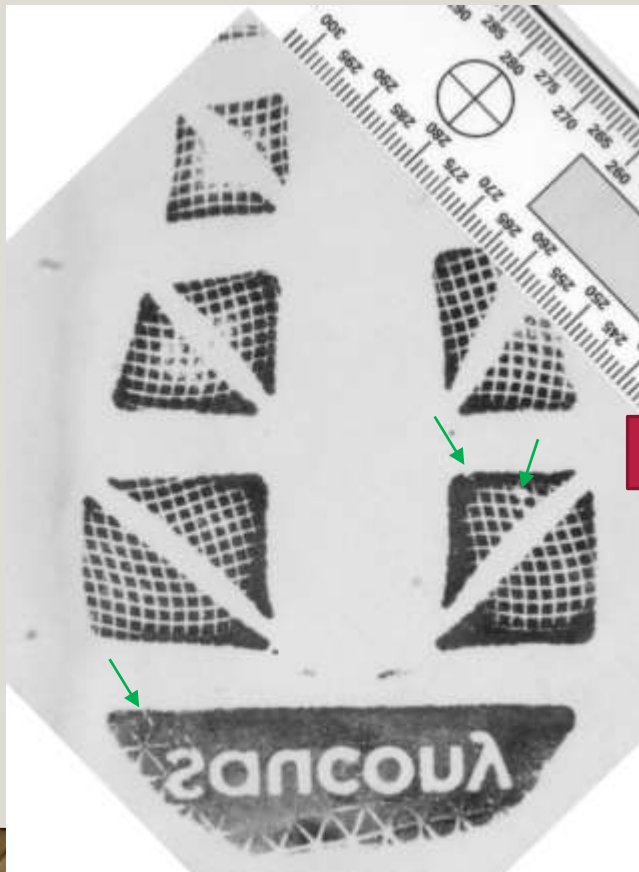
DAVID KANARIS

CHIEF, ALASKA SCIENTIFIC CRIME DETECTION
LABORATORY

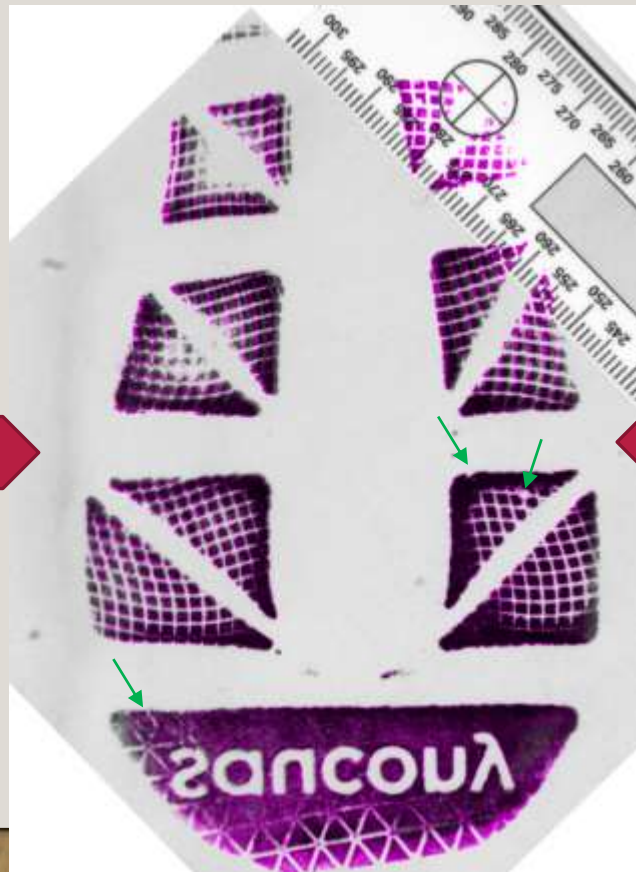
CHAIR, OSAC FOOTWEAR AND TIRE SUBCOMMITTEE

WHAT DOES A FOOTWEAR COMPARISON ENTAIL?

Crime Scene Impression



Superimposed Composite Image



Known Shoe Test Impression





CURRENT CONCLUSION SCALE

ARTICULATING OPINIONS INTO THE FUTURE

- Goals were:
 - To move away from categorical conclusions
 - Decide on a framework for articulating opinions to the stakeholders that were transparent, more justifiable, and didn't lose anything in terms of how understandable they were
- Also wanted to provide something that was usable to practitioners and adoptable by laboratories. To do this we had to answer two questions
 1. Are the new opinions being understood?
 2. Are the new opinions perceived as much “weaker” than previous associations?

QUESTION 1 – HOW TO IDENTIFY THE BEST FRAMEWORK?

- Weight of evidence type scale
 - Where the practitioner must consider the two propositions during the evaluation



QUESTION 2 –
HOW MANY
BOXES IS TOO
MANY BOXES?

QUESTION 3 –
HOW
IMPORTANT IS
SYMMETRY IN
A SCALE?



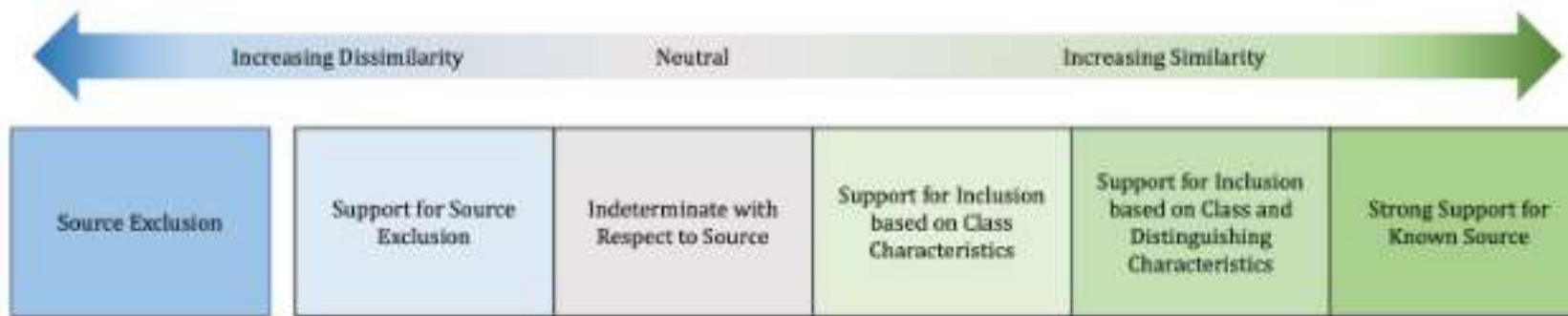
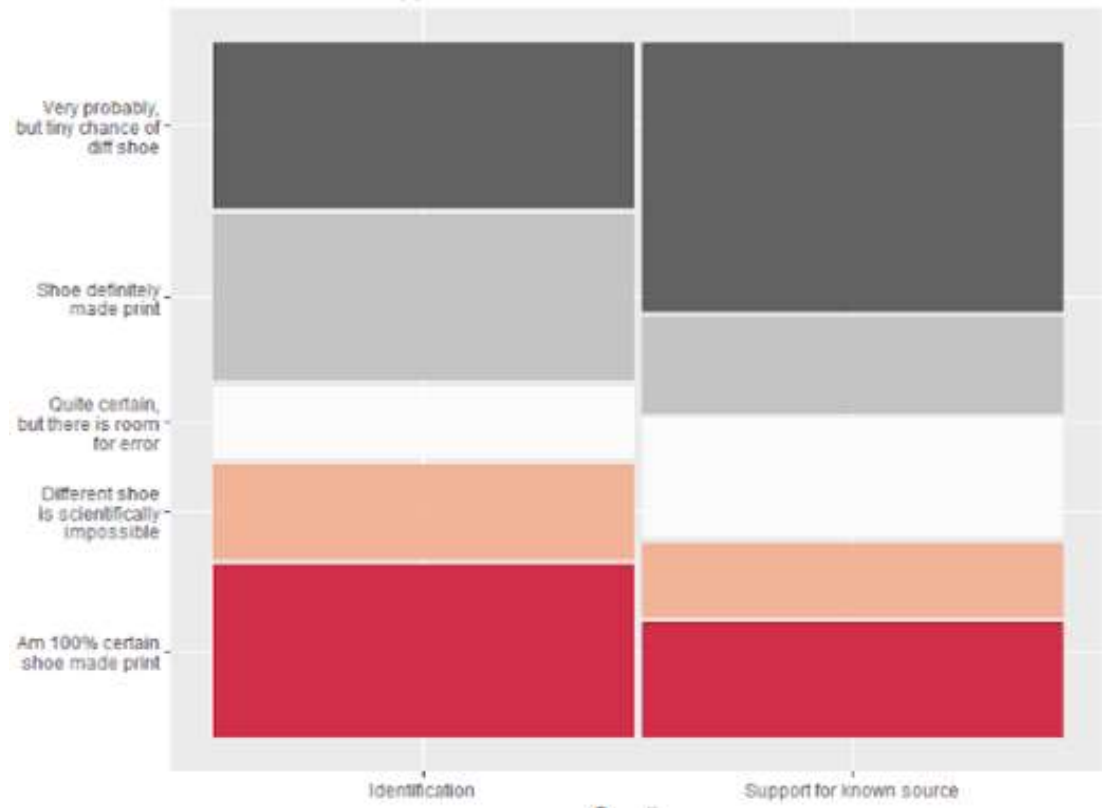


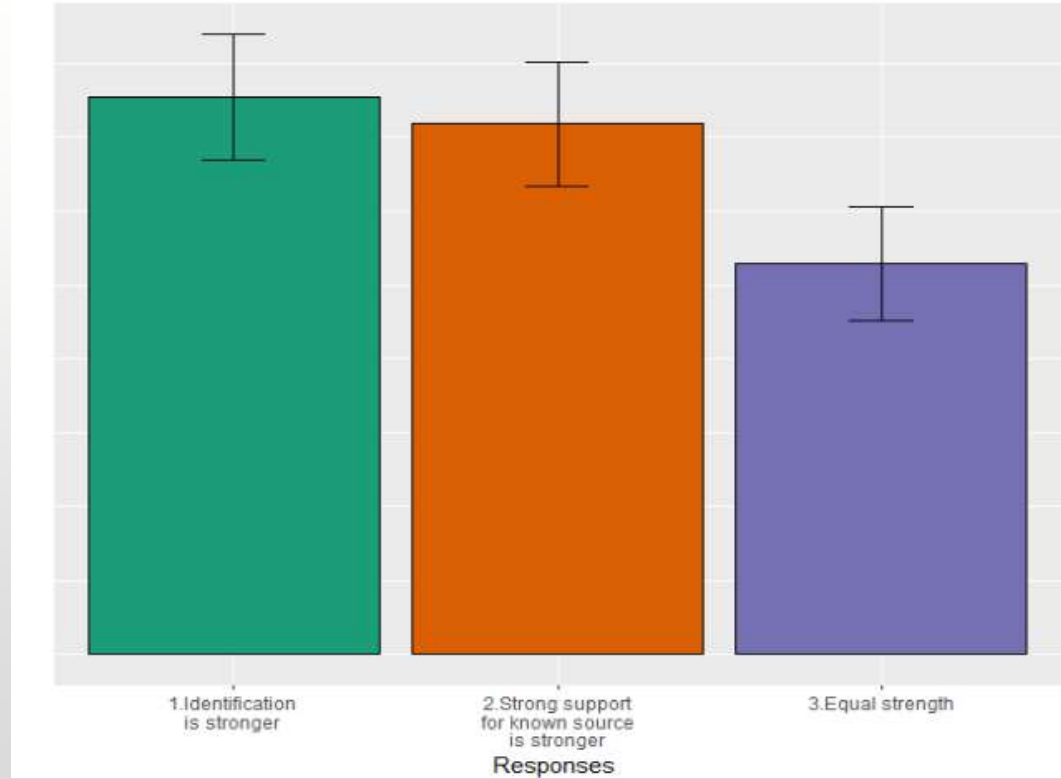
Figure 1. Articulation of source opinions for footwear and tire interpretations. The source opinion categories are displayed as concrete bins across a continuum of observed similarity/dissimilarity.

NEW SCALE



QUESTION 4 – ARE WE UNDERSTOOD?

QUESTION 5 –
ARE WE
CORRECTLY
REPRESENTING
THE
STRENGTH OF
SUPPORT?



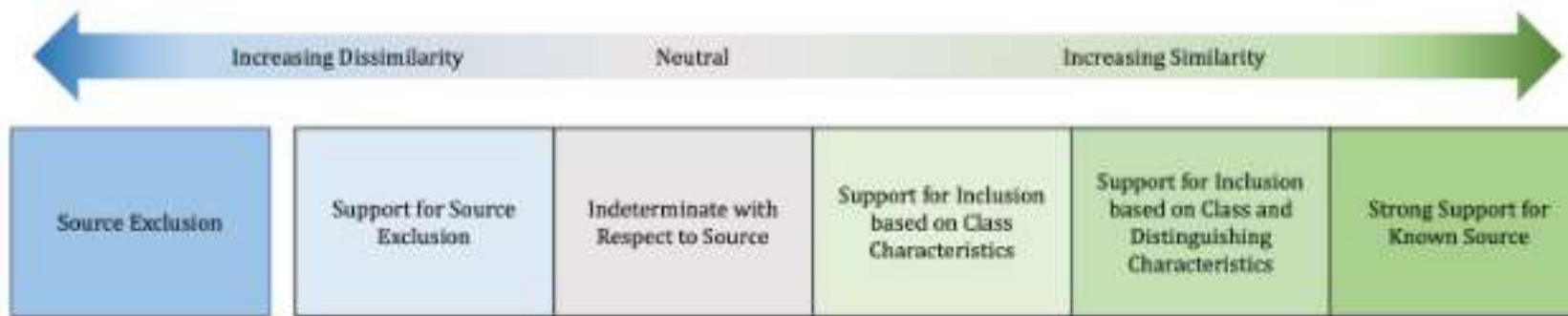


Figure 1. Articulation of source opinions for footwear and tire interpretations. The source opinion categories are displayed as concrete bins across a continuum of observed similarity/dissimilarity.

NEW SCALE

THANK YOU

- David Kanaris
- david.kanaris@alaska.gov
- [Footwear & Tire Subcommittee | NIST](#)