

2022-2023 Projects

NCNR Sample Environment

Tanya Dax

Ongoing Projects

7T Dry Magnet Procurement

Status and Schedule Update

Sample Holders

Inventory and Purchases
Designs in Progress

CCR Maintenance

Work in Progress
Status of Fleet

Space Management

Preparation for losing space in various phases of facility upgrades through 2024.

Safety and Training

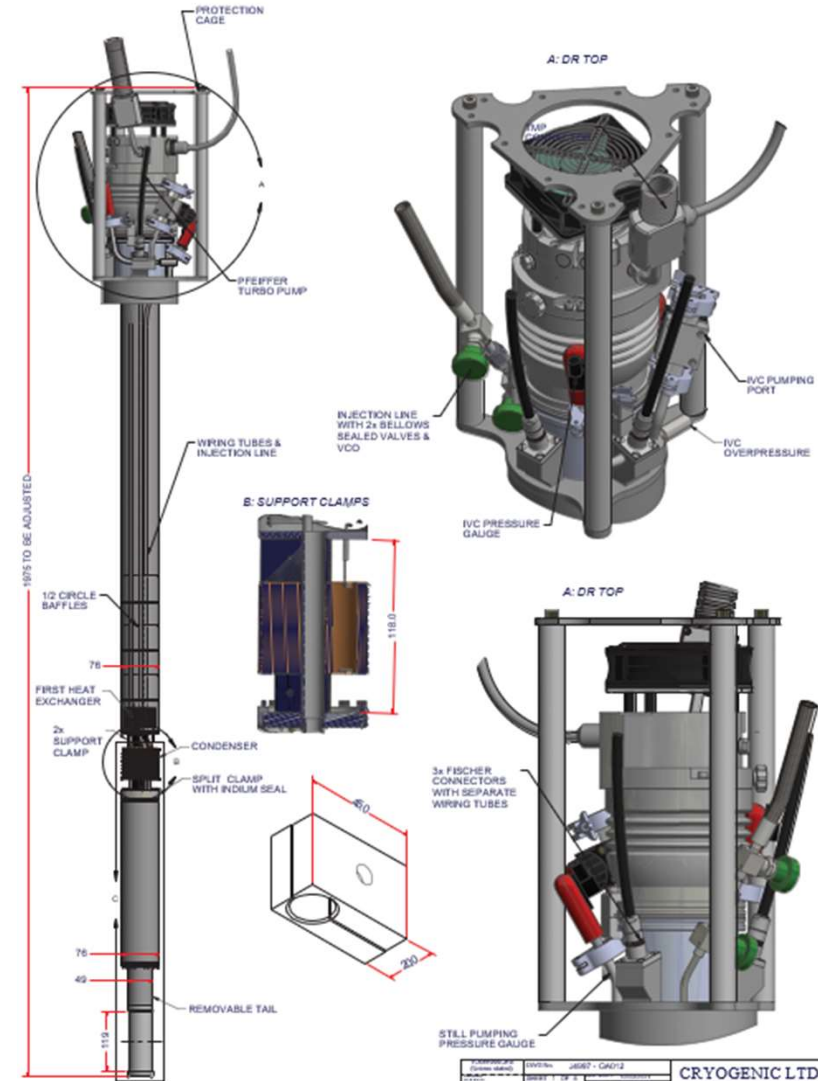
Hazard Reviews
Lift Reviews
LabView Core 1 and Core 2 training

Equipment and Supplies Management

Looking for a good solution

7T Dry Magnet Procurement

Design Reviewed and Approved
Long lead time components ordered
Some 12m lead times - unexpected
Schedule delayed in favor of 12T completion



CRYOGENIC LTD	DESIGN NO.	J607 - C6012	REVISED	1	2	3
CRYOGENIC LTD	DATE	2012/01/12	BY	ADP	CHKD	J607
CRYOGENIC LTD	PROJECT	7T DRY	SCALE	1:1	DATE	2012/01/12
CRYOGENIC LTD	DRAWN BY	ADP	DATE	2012/01/12	CHKD BY	J607
CRYOGENIC LTD	PROJECT	7T DRY	SCALE	1:1	DATE	2012/01/12
CRYOGENIC LTD	DRAWN BY	ADP	DATE	2012/01/12	CHKD BY	J607

Sample Holders Status

Standard Holders Inventory

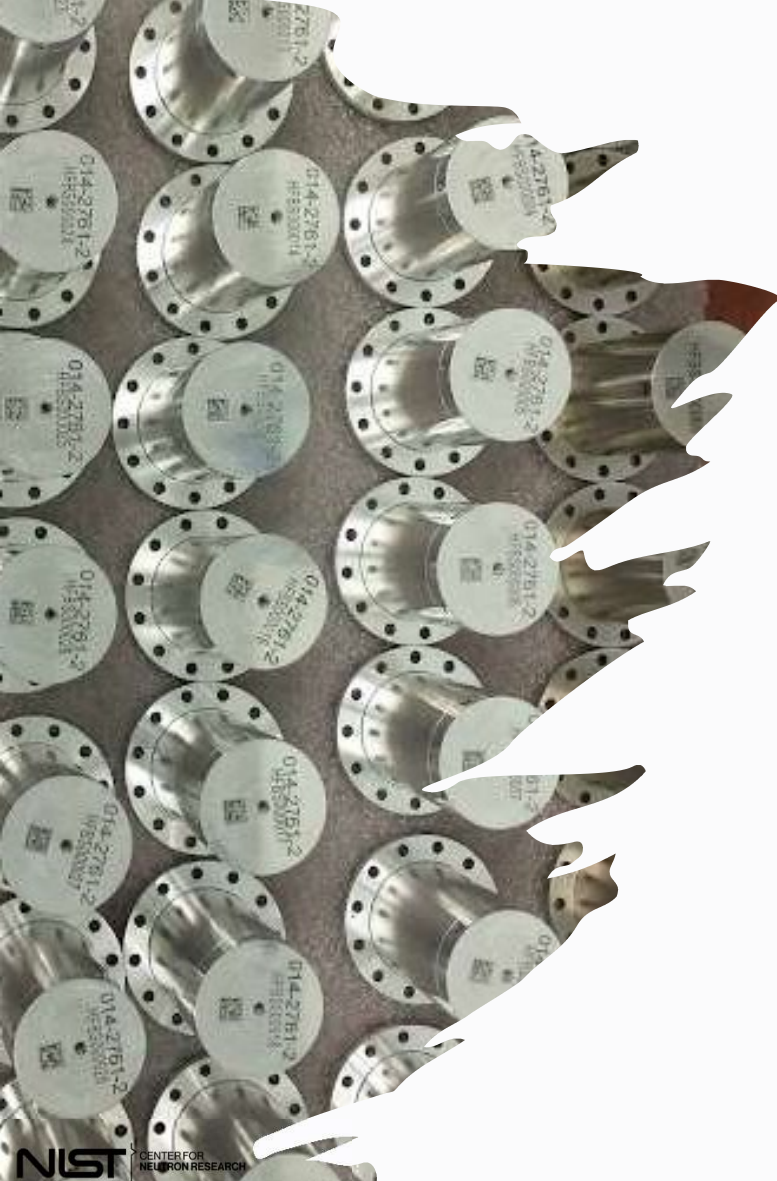
Full inventory of all empty holders in all locations
Will be fully stocked when current orders arrive

Barcoding

Vanadium and copper parts done

New Parts Designs

Reflectometry Multi-Sample Holder –In Progress
HFBS/NSE Flat Plate Sample Holder – On Hold
HFBS Powder Capacitance Sample Holder –On Hold



Reflectometry Multi Sample Holder

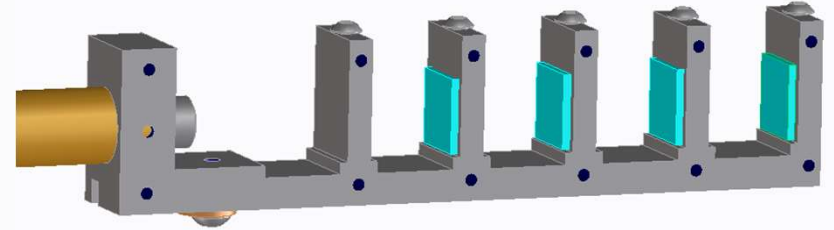
Reduce time to sample changeover

Options with 3 - 8 sample positions

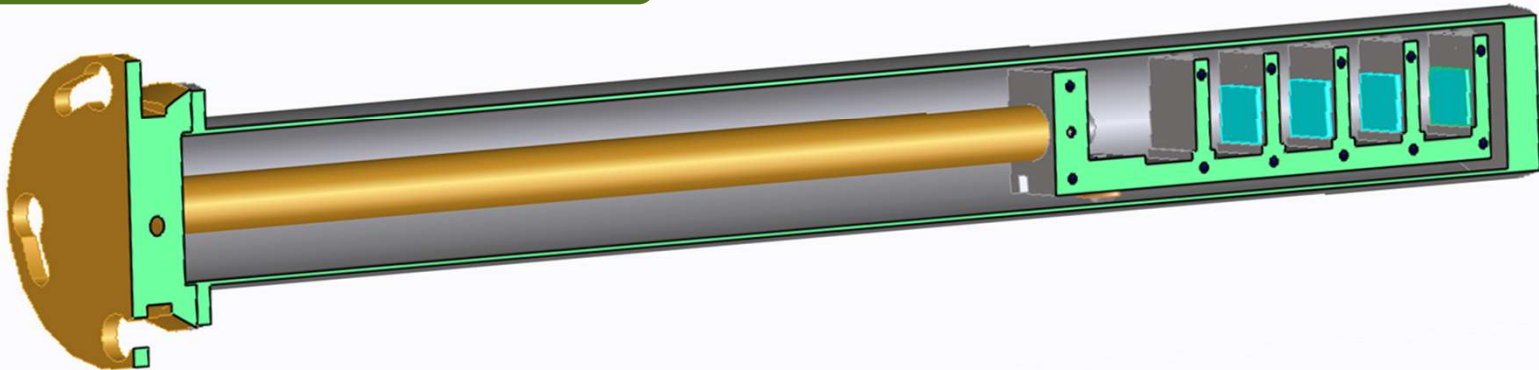
Vacuum sealed can, evacuated offline

Sensor and resistivity wiring feedthrough

Design in progress



+



CCR Maintenance Status

✓	Apr-22	CCR-05
✓	Apr-22	CCR-08
✓	Apr-22	CCR-09
✓	May-22	CCR-13
✓	Apr-22	CCR-14
✓	Mar-22	CCR-17
⚠	Feb-21	CCR-20
⚠	Mar-21	CCR-21
⚠	Jul-20	CCR-22
✗	Apr-19	CCR-23
✓	Jun-21	CCR-24

⚠	Mar-21	CCR-18
⚠	Apr-21	CCR-19
✓	Jun-22	CCR-25
✓	May-22	CCR-26
⚠	Apr-21	CCR-27
⚠	Apr-21	CCR-28

⚠	Jan-21	CCR-11 NGD
⚠	Jul-20	CCR-12 NGD
✗	Nov-18	CCR-40 BT4
✓	Apr-22	CCR-41 Refl.

✗	Apr-19	TLCCR-1 NSE
⚠	Jul-20	TLCCR-2 HFBS
⚠	Feb-21	TLCCR-3 DCS
✓	Mar-22	TLCCR-4 FANS
✓	Mar-22	TLCCR-5 Short
✓	Mar-22	TLCCR-6 Short
✗	Jan-20	TLCCR-7

New Stuff

New HTCCR plate for 3 heaters configuration
New SHI compressors received for TLCCRs

Vendor Service

ARS displacers vendor service x2

Problem List

CCR-12 Compressor electrical failure
CCR-13 Minor damage to cold tip, still usable
CCR-23 Occupied by Tosado apparatus
CCR-25 Installing new heater stage
CCR-27 Installing new heater stage
TLCCR-5 no compressor cart

Space Management

Make Space for Storage

Excessed old equipment
Cleaned out trailer
Cleaned out B-wing Mezzanine

Temporary Moveout

OC/Magnets area in C100
NSE Mezzanine
“Storage” space between NGA-B

Make Space for Work

Shifted HB user station 18 inches to right
Regained space in HB from RFO
Made space in HB-Lab for work



Hazard Reviews

Manuals Edits

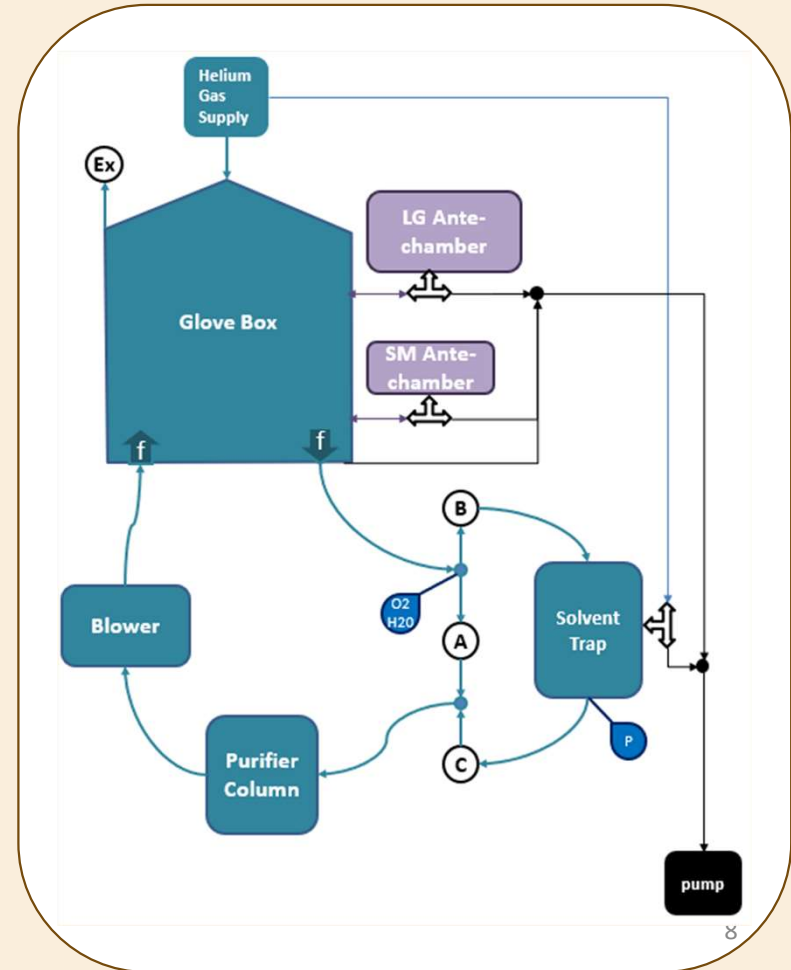
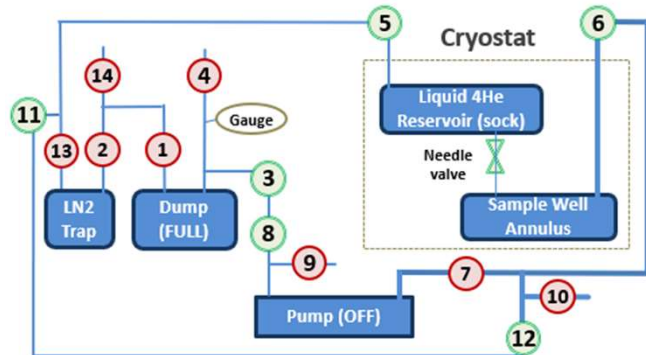
Review user and technician manuals for consistency, accuracy, clarity.

Glove Boxes

SOPs, User Training Manuals, etc.
Storage Options
Planning Cleanup Operations

CCRs

SOPs, User Training, Lift Documentation, etc.

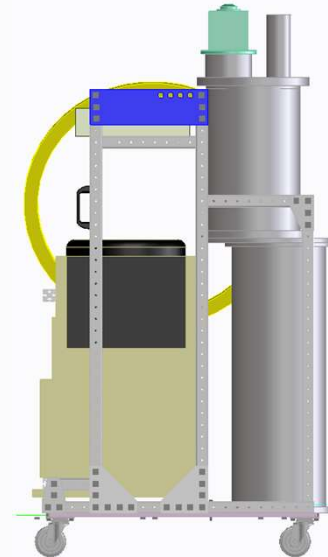
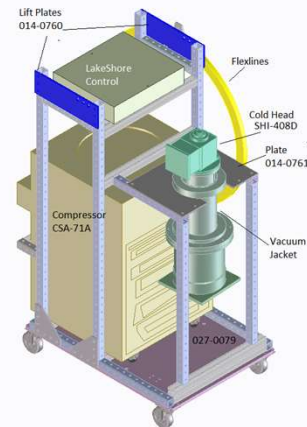
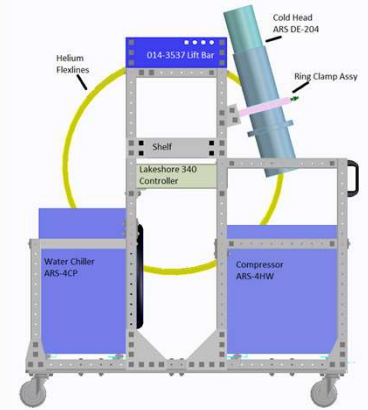


New Carts Designs for old CCRs

ARS-All with new and old compressors – near completion
TLCCR-DCS with new compressor – in progress
TLCCR-NSE and HFBS non-compressor carts – not started
TLCCR-5, 6, 7 make liftable – not started

Non-Standard Lift Reviews

Janis #18-28 existing carts –near completion
All BLCCR Cold Heads – in progress
All TLCCR Cold Heads – in progress
Reflectometry CCR Harnesses – in progress



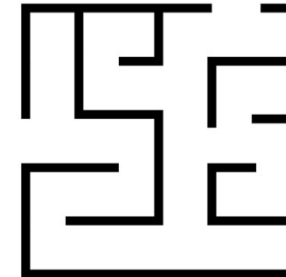
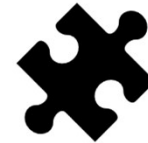
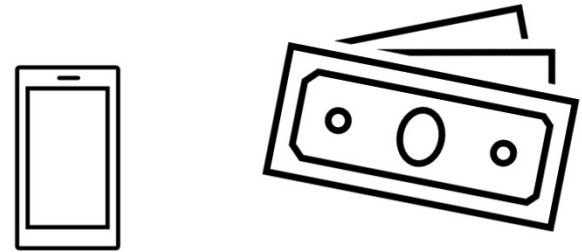
Equipment and Supplies Management

What We Want

- Lab Inventory Management System (LIMS)
- Equipment Maintenance System
- Beamline Event Logging
- Barcoding and Equipment Tracking
- Shared, Unified Solution
- Money

What We Have

- Lab Supplies Spreadsheet
- Lab Equipment Spreadsheet
- SE Equipment Spreadsheet
- Bankcard Purchases Spreadsheet
- SE Equipment Maintenance Appsheet (Google Sheets)



Questions and Suggestions?

