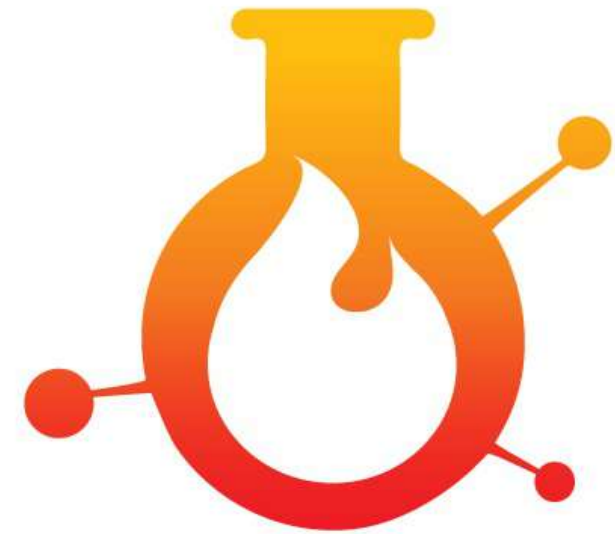


# PSCR 2019

July 11, 2019  
Chicago, IL



**FIRE DATA LAB**

# DISCLAIMER

**This presentation was produced by guest speaker(s) and presented at the National Institute of Standards and Technology's 2019 Public Safety Broadband Stakeholder Meeting. The contents of this presentation do not necessarily reflect the views or policies of the National Institute of Standards and Technology or the U.S. Government.**

**Posted with permission**

# Fire Data Lab Timeline

NIST Grant Awarded

Data Starts Flowing

Data Analytics Summit

Community Solutions Summit

June, 2017

Aug, 2017

Dec, 2017

April, 2018

June, 2018

Aug, 2018

Feb, 2019

First Awards Given

Data Workshops

Second Round of Awards

# DATA QUALITY

- Training program
- Get access to your data
- Create rules in system
- Pick a starting point
- Passively get data
- Develop a bad data strategy
- Map your data

Agency	# Incident Count of uuid	Not Cancelled	No Duration Total	No Alarm Processing	No 1 <sup>st</sup> Unit	No 1 <sup>st</sup> TurnOut	No 1 <sup>st</sup> Travel	No 1 <sup>st</sup> Response
1	39437	37242	1	1006	2395	2415	2415	2395
2	7881	6912	7					
3	327	282				4	4	
4	112	86	36	8	40	49	44	47
5	1128	1070	209	23	85	286	274	103
6	38004	36349	4		1	192	192	1
7	64999	59914	8861	1213	3980	6683	6263	4490
8	118975	106868	3309	2619	3584	3593	3593	3584
9	1537	1437	222	22	112	420	394	149

# Analytic Program Progression



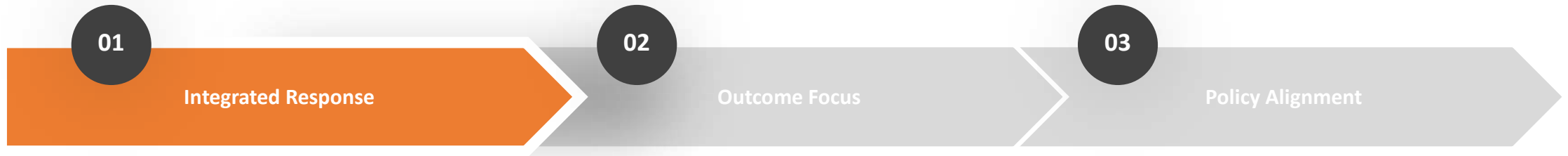
- Compartmentalized
- Time Intensive
- Canned Reports
- Monthly/Quarterly
- Formats can be hard to understand
- Preplans printed

- Crews can access
- Data is reliable
- GIS products produce travel distribution models
- Updated Daily
- Single Page Reports
- Digital Preplans

- Crews can manipulate
- Data on demand
- Analysts helps the user understand their impacts
- Near real-time
- Layered reporting
- Preplans loaded into eGIS

# COMMUNITY SOLUTIONS SUMMIT

FEB 2019 - SEATTLE



## Broad Approach

Police & Fire & \_\_\_\_\_?

The best solutions involve a much broader approach that utilizes public private partnerships and non-profit partnerships

## Definable Outcomes

What is happening to the patient

Definitive and definable outcome data are being used to inform decisions & are being shared among agencies

## Funding Support

Agency and political integration

Relationship building and information sharing that leads to defined roles for all agencies and stakeholders

# Data – Interoperability – Knowledge

## Command and Control Integrated Intelligence

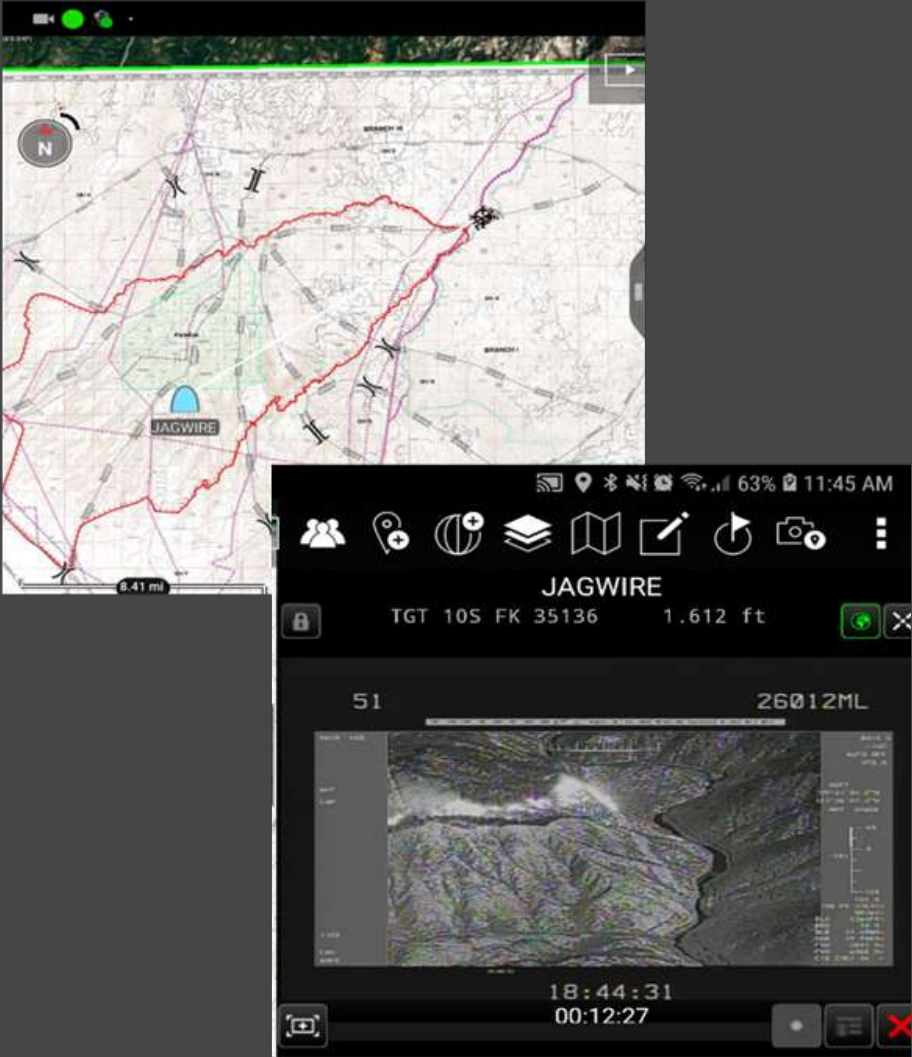


# Data – Interoperability – Knowledge

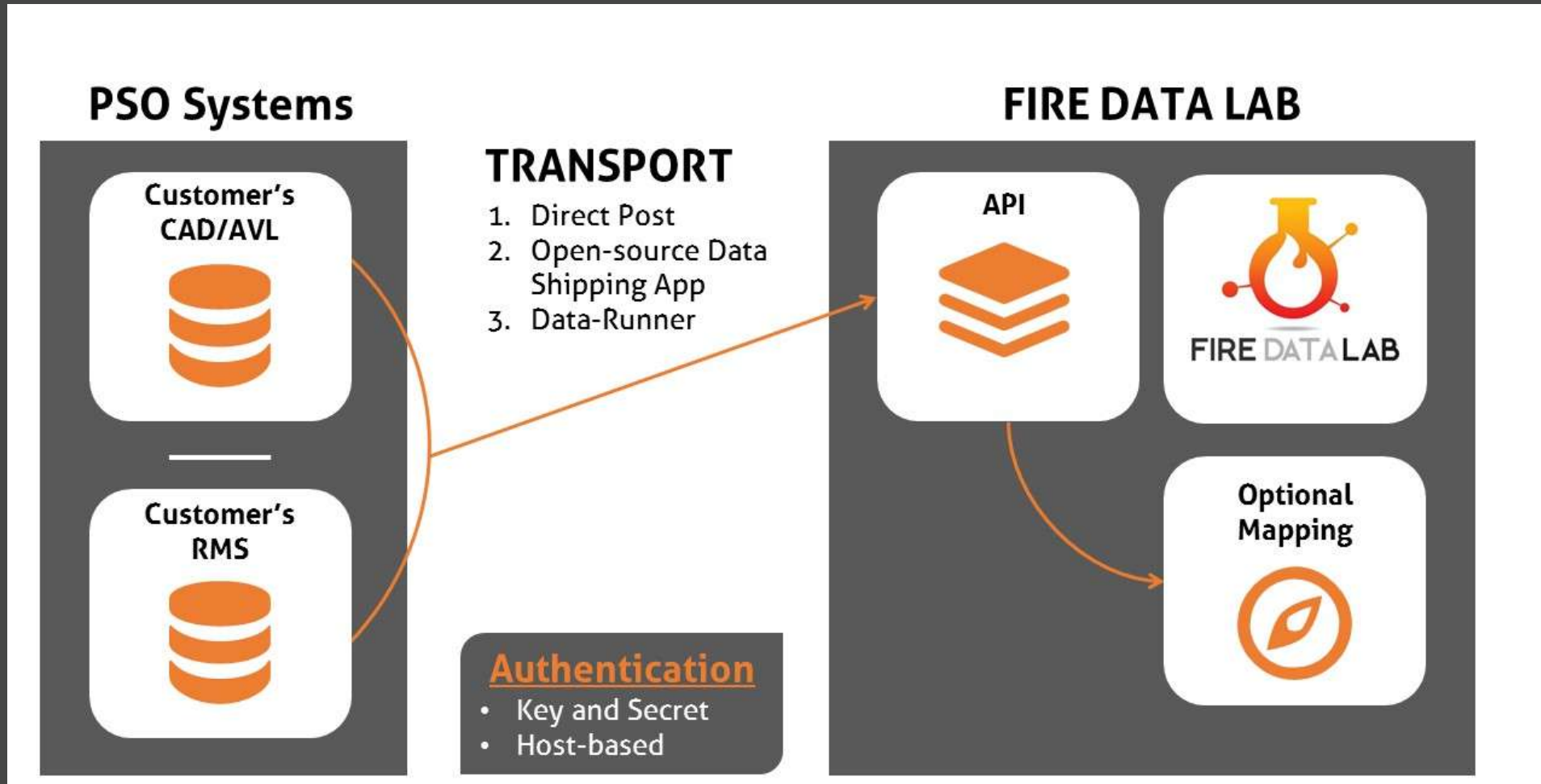




# Data – Interoperability – Knowledge



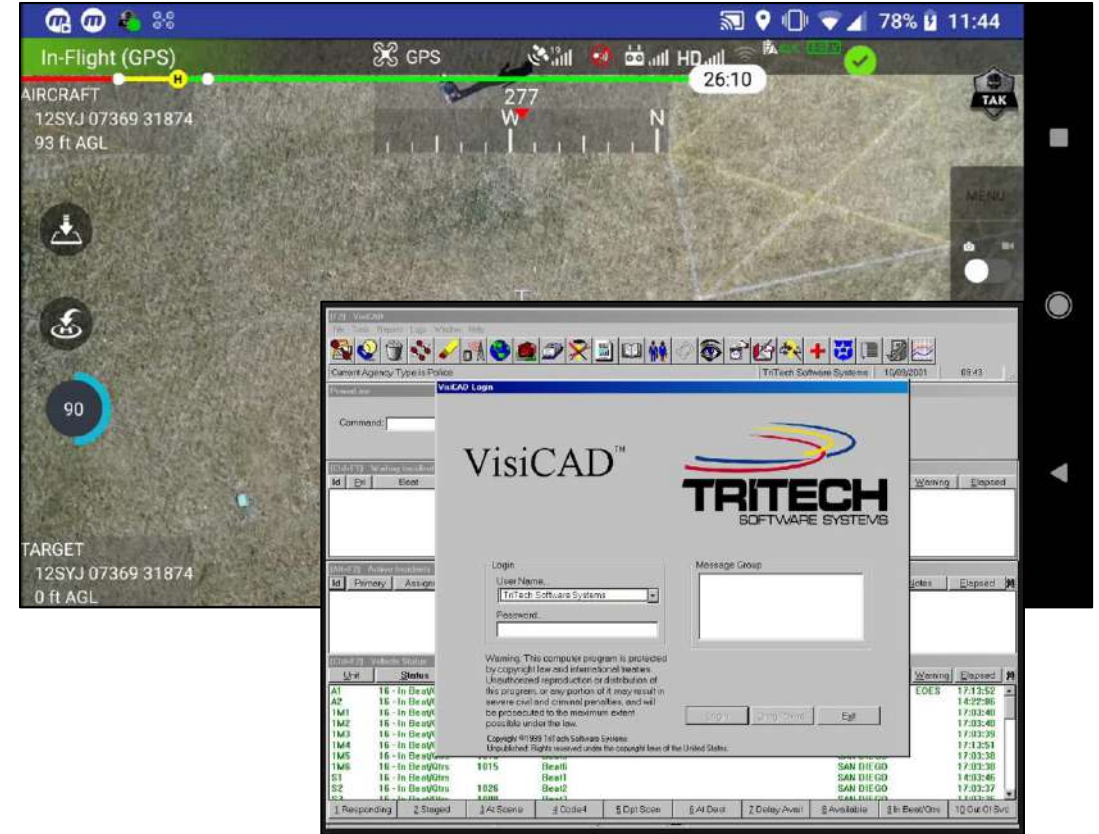
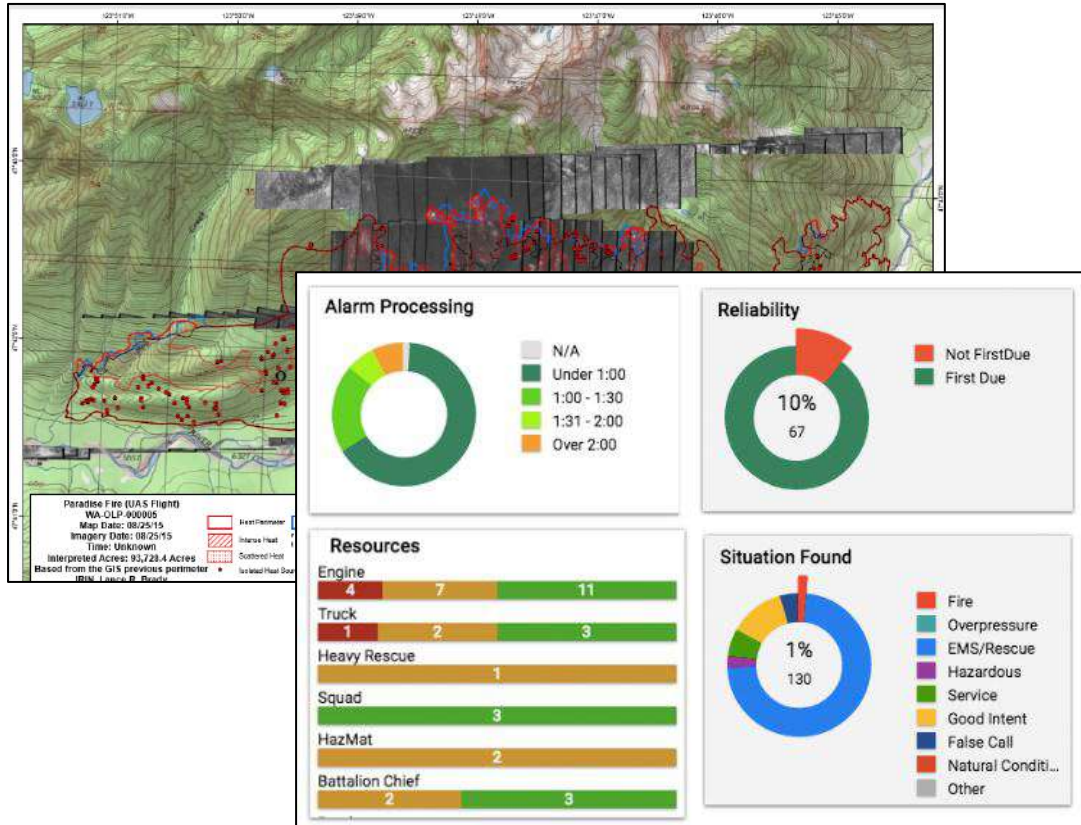
# Data – Interoperability – Knowledge



# 2019... What's happening around us

- The scale of events (speed, size, tempo) requires decentralized decisions across our organizations
- Intelligence is useless if leader does not receive it, understand it, or believe it
- Technology is not the mission... the **mission** is the **mission** and technology is one of our tools

# Public Safety Software Systems – Get ready, lots of platforms, many applications



<https://www.firerescue1.com/>

*How many software systems do you have in your fire department? How many were there 15 years ago? How many will you eval in 2019?*

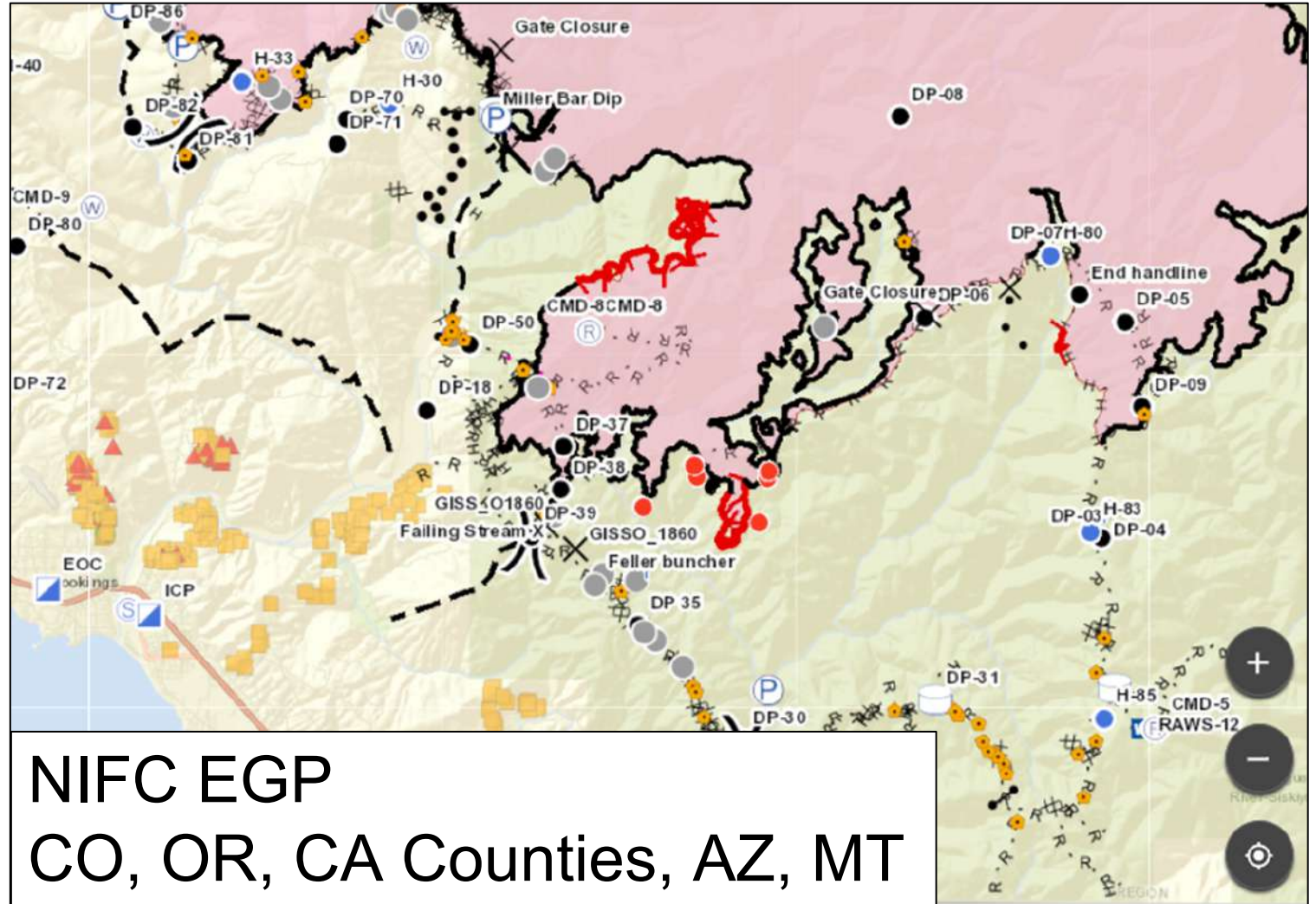


# Collaborative Mapping – Single data source/multiple uses

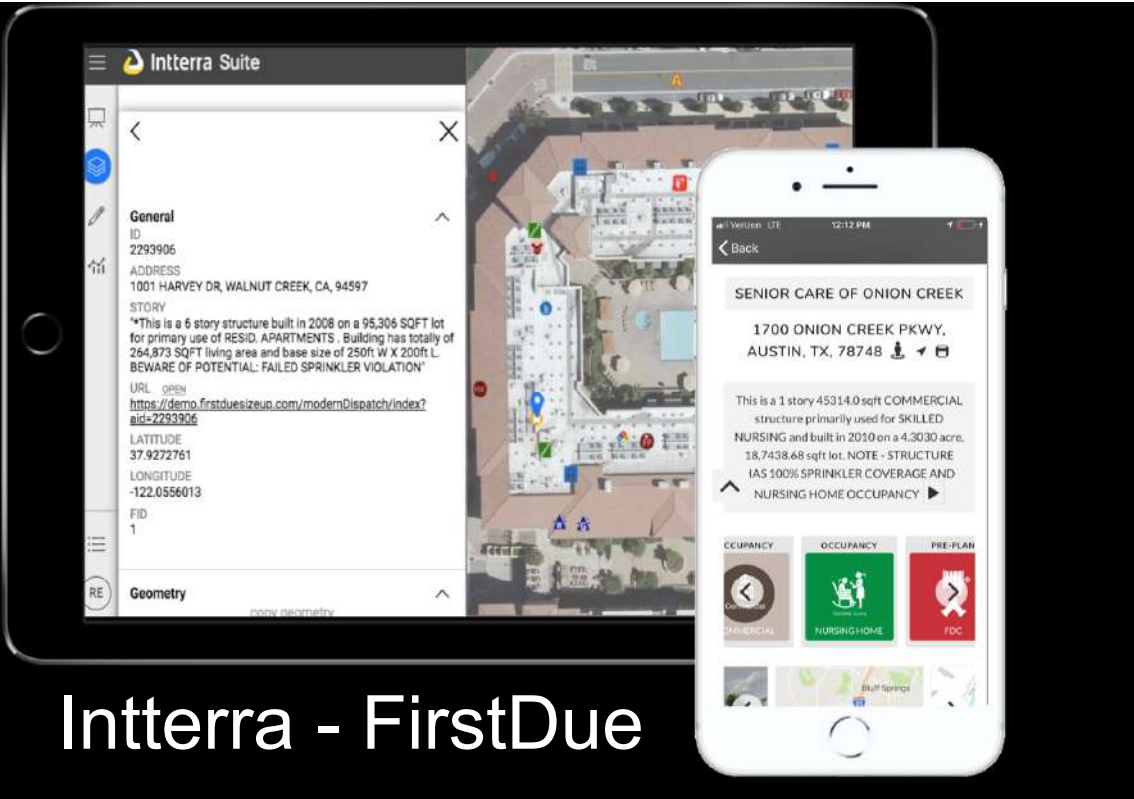
2018 National Incident  
Feature Service (NIFS)

*Number of Fires – 19,475*

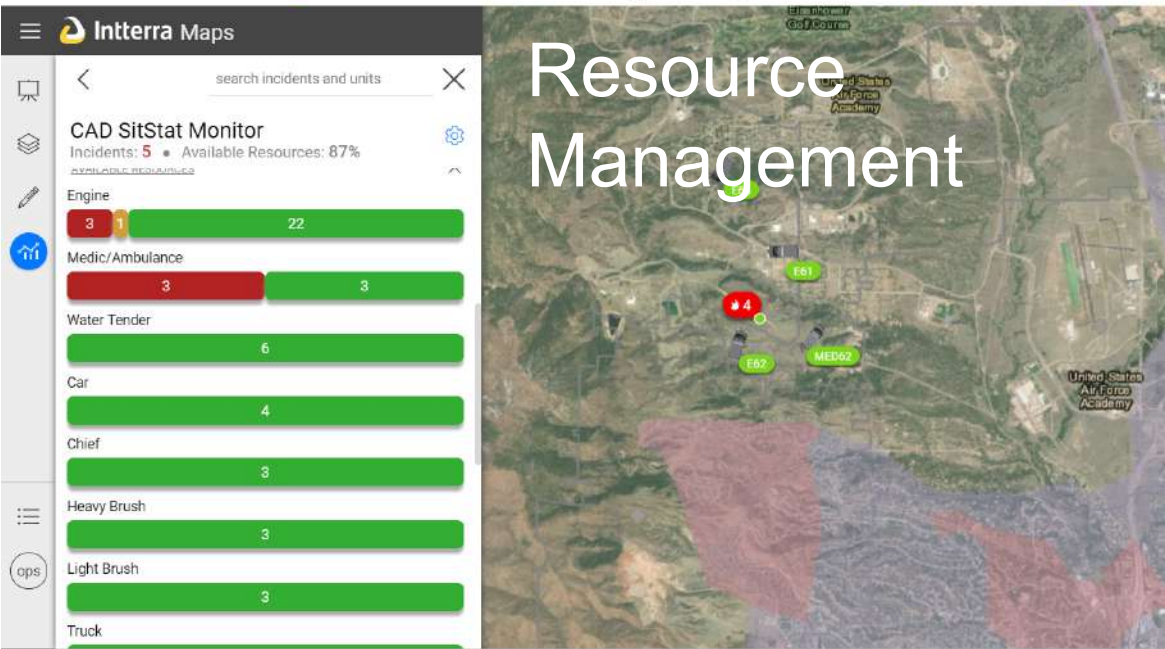
*Total Edits – 608,592*



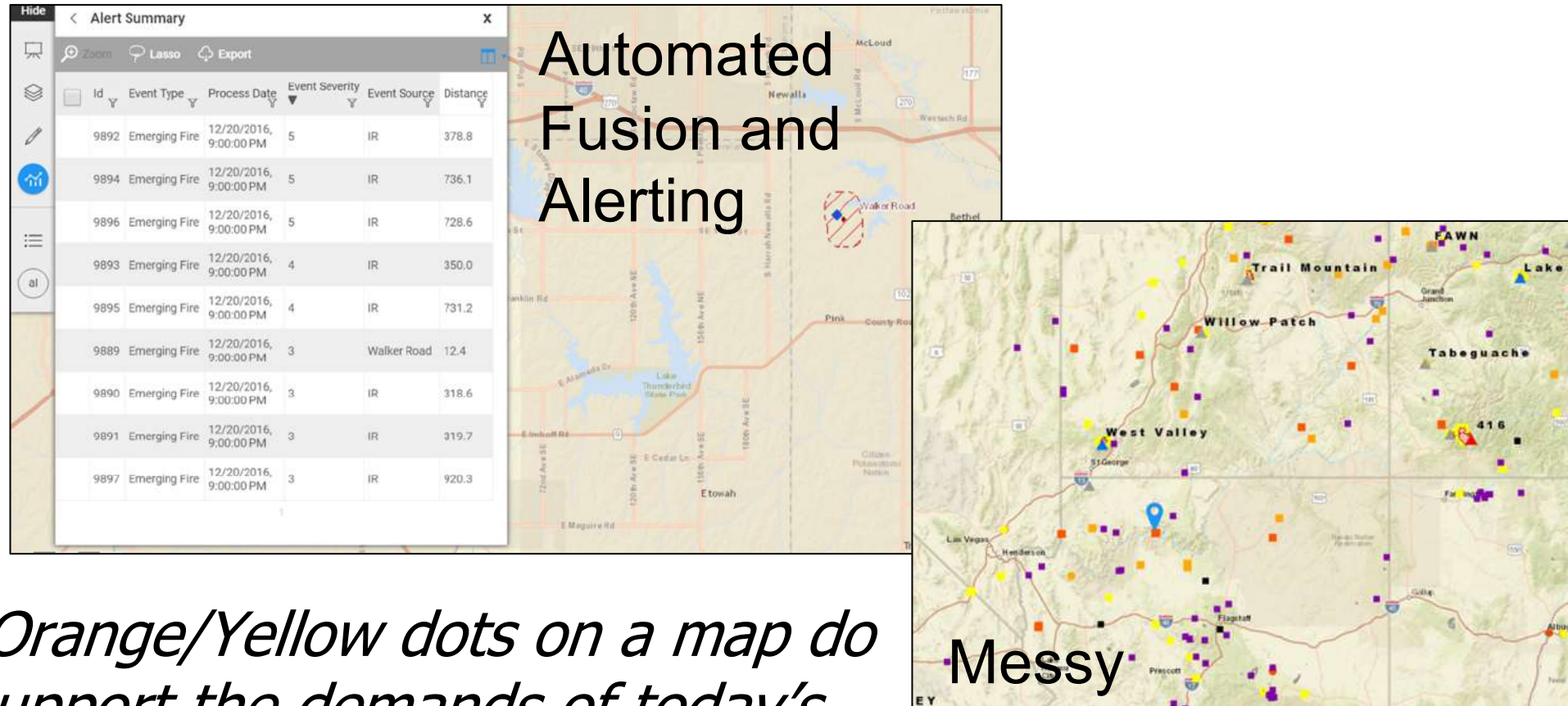
# Data Analysis/Fusion – Putting your data to use



Intterra - FirstDue



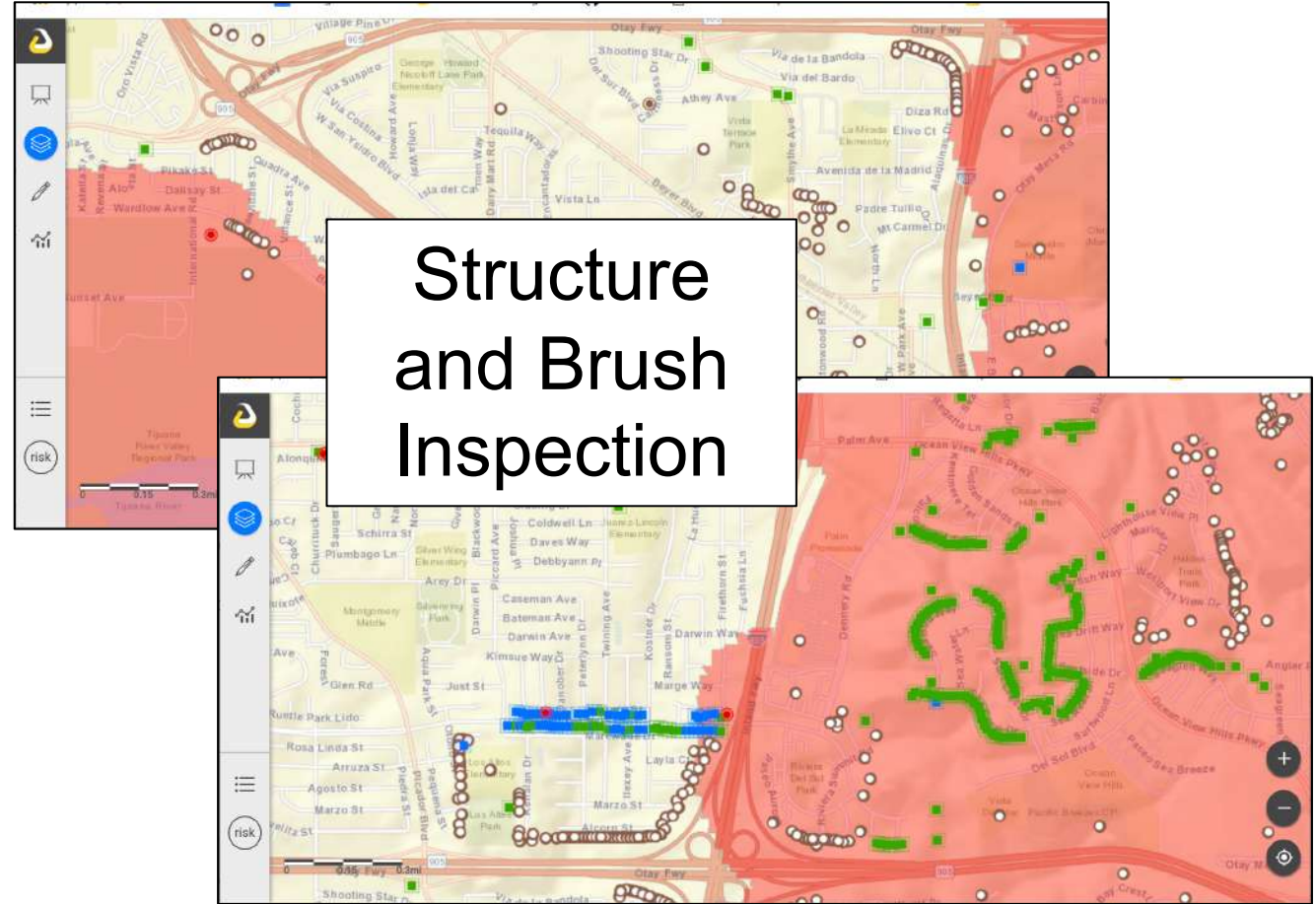
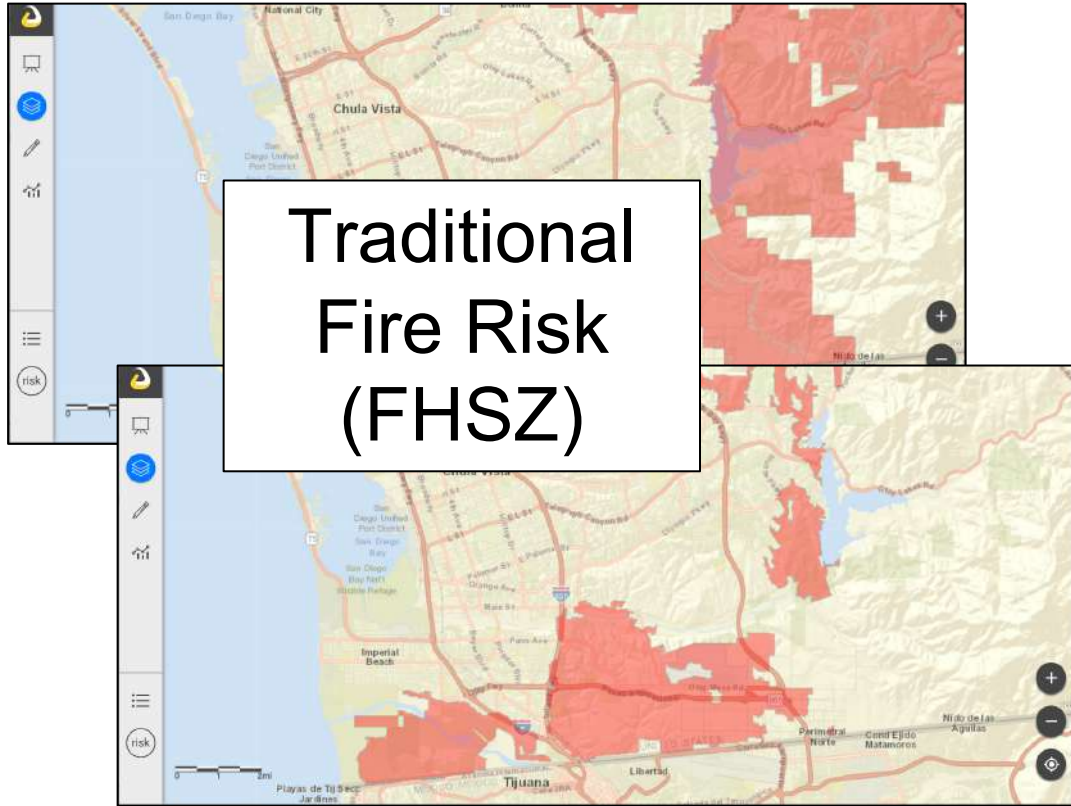
# Data Analysis/Fusion – Combining data to make better decisions and paint a clearer picture



*Red/Orange/Yellow dots on a map do not support the demands of today's incidents*

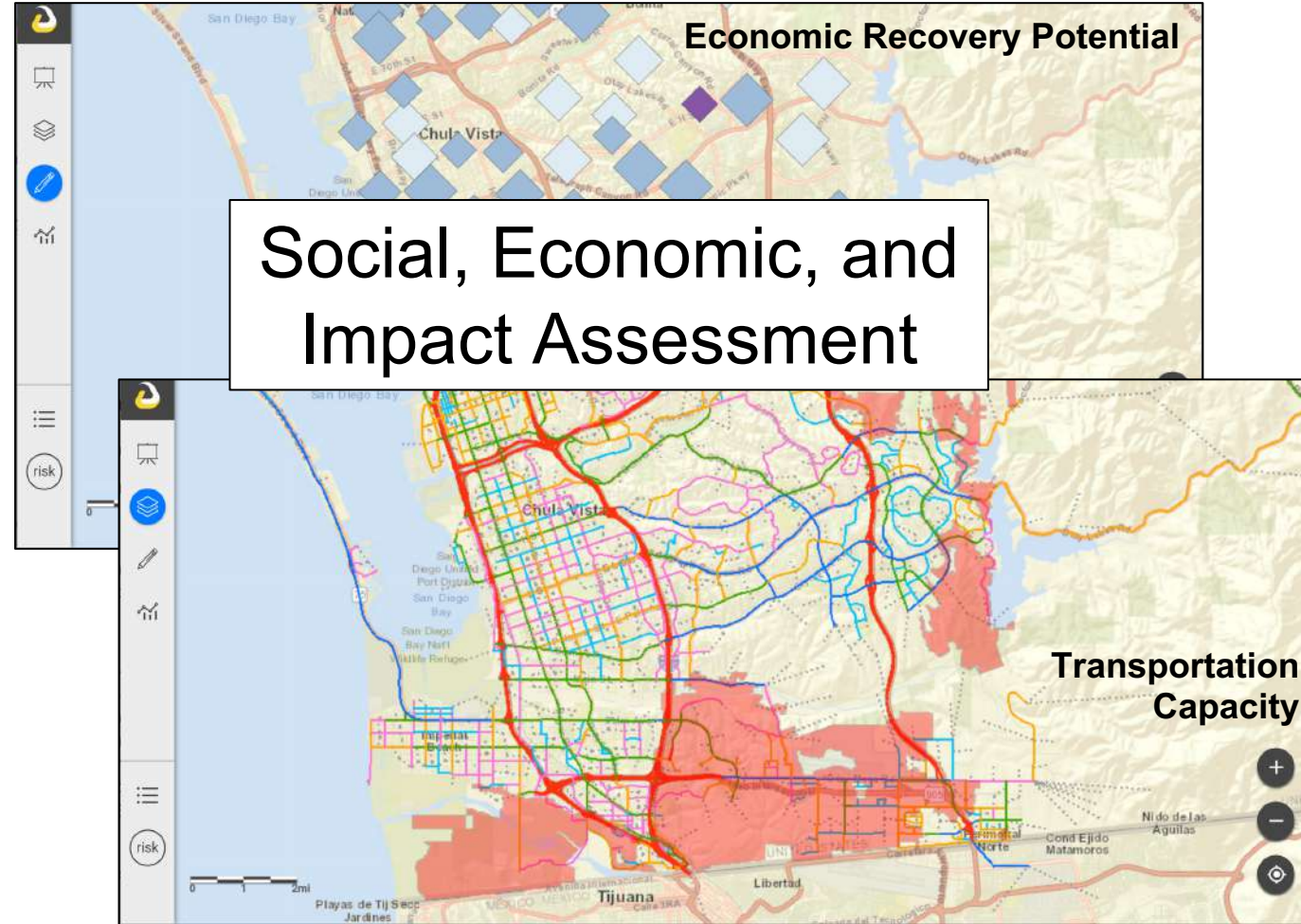
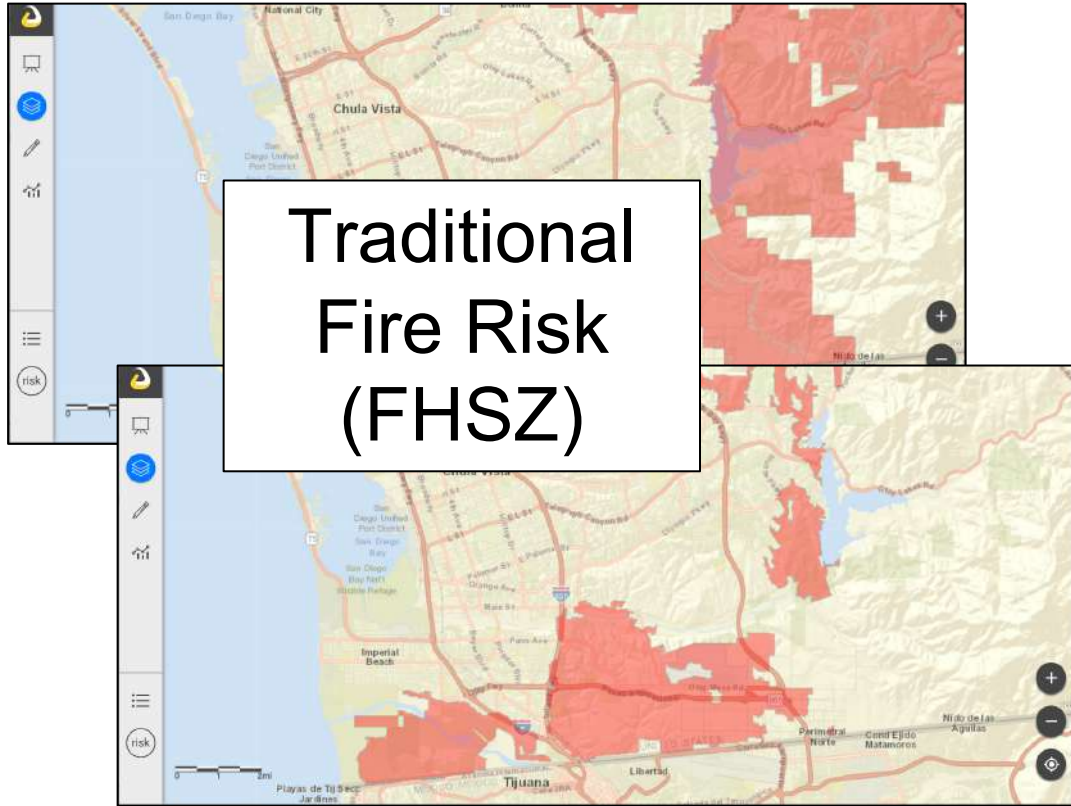


# Data Analysis/Fusion – Expanding our view of fire 'risk' to include community and social data

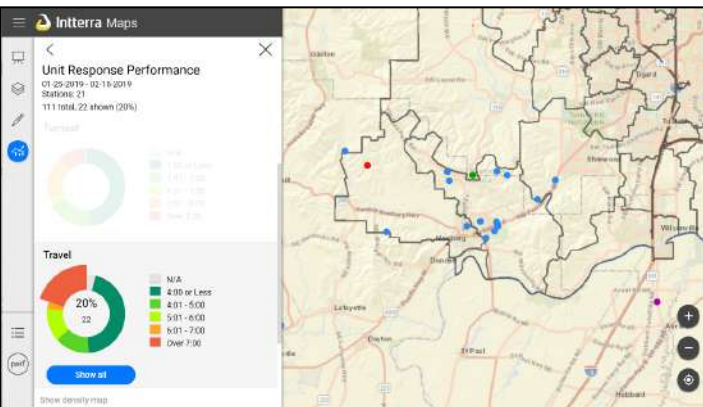
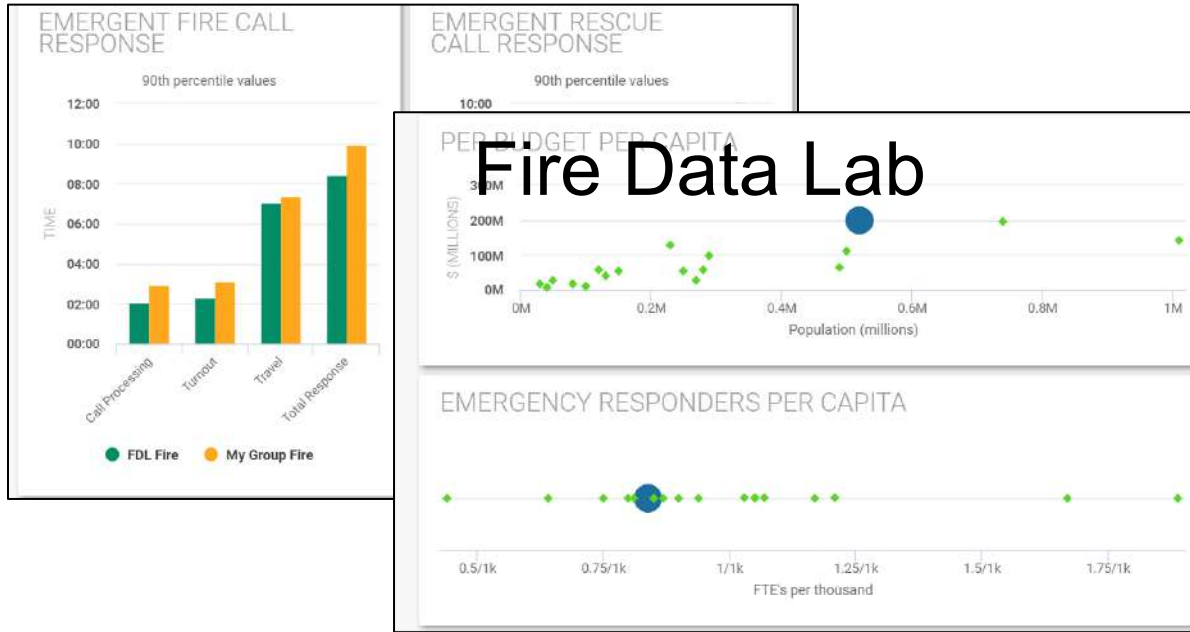




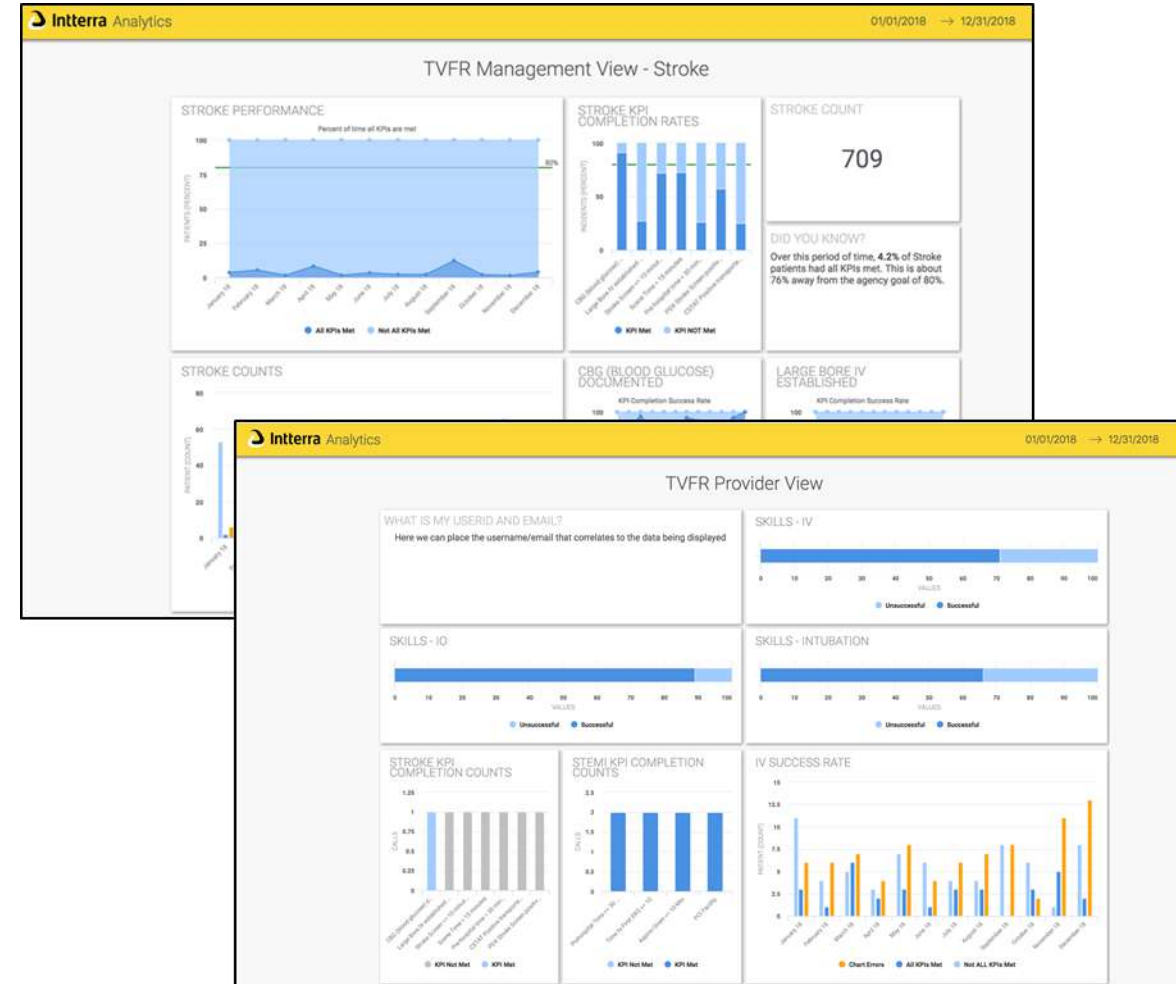
# Data Analysis/Fusion – Expanding our view of fire 'risk' to include community and social data



# Performance Analysis – Measuring and reporting performance and outcomes



## Station Performance



## EMS Quality Improvement



**#PSCR2019**

Come back for the  
**Next  
Session**  
**10:35 AM**