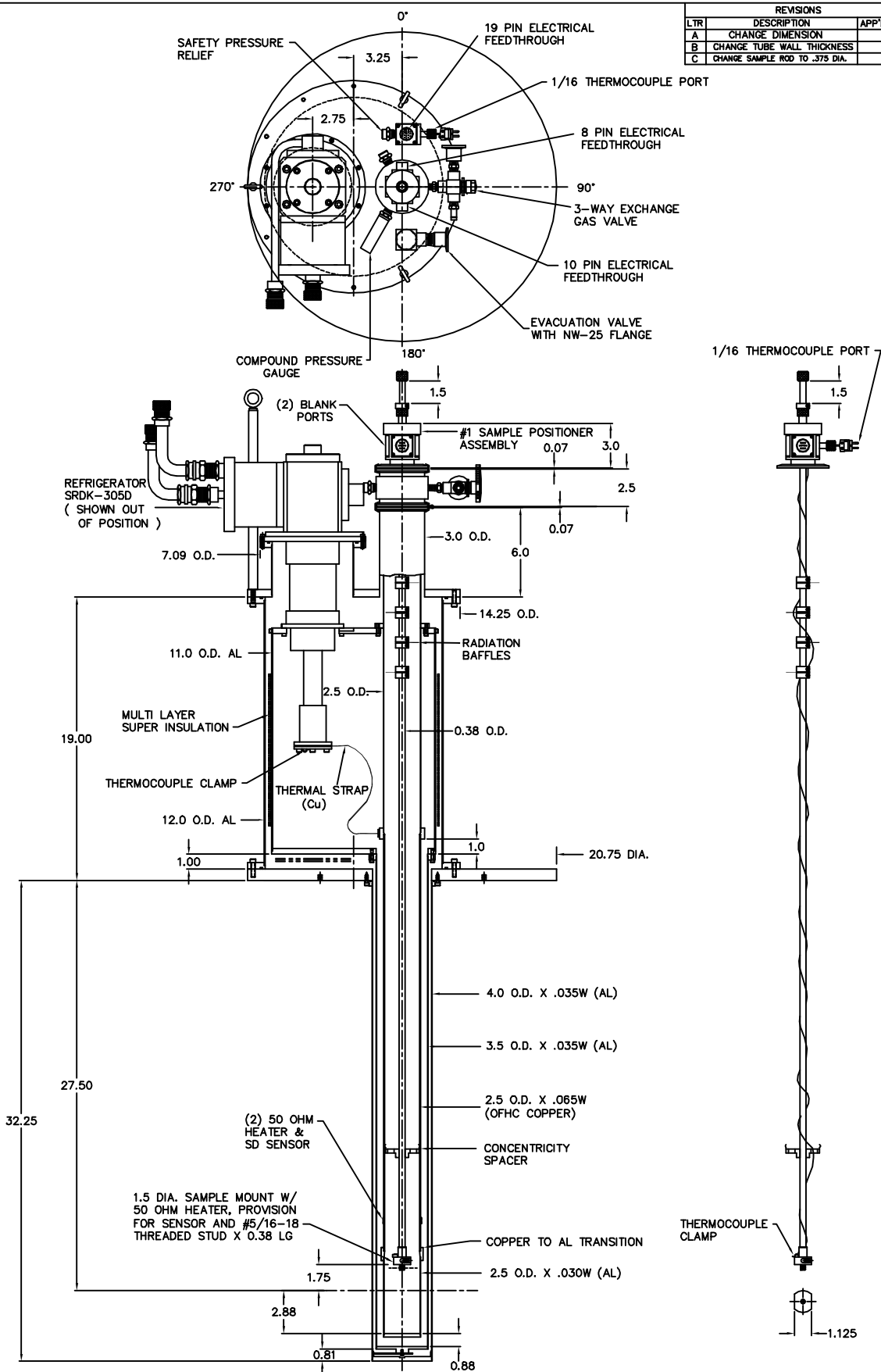


REVISIONS			
LTR	DESCRIPTION	APP'D.	DATE
A	CHANGE DIMENSION		11/11/01
B	CHANGE TUBE WALL THICKNESS		11/13/03
C	CHANGE SAMPLE ROD TO .375 DIA.		11/26/03



SYSTEM INCLUDES

- (1) #1 SAMPLE POSITIONER
- (1) #2 SAMPLE POSITIONER
- AS SPARE

NOTE: ALL DIMENSIONS ARE IN INCHES

CONFIDENTIAL AND PROPRIETARY
 THIS DRAWING AND/OR INFORMATION CONTAINED
 HEREIN IS THE SOLE PROPERTY OF THE JANIS
 RESEARCH COMPANY AND IS NOT TO BE RELEASED
 OR DIVULGED TO THIRD PARTIES WITHOUT THE
 EXPRESSED, WRITTEN CONSENT OF THE JANIS
 RESEARCH COMPANY, INC.

APPROVALS		
DEPT.	SIG.	DATE
DRN BY	B.F.	09/25/03
CHK BY		
ENG.		
S.G.		
RELEASED TO MFG.		
CUST. APPROVAL		
BY		

JANIS RESEARCH CO.		
WILMINGTON, MA.		
TITLE SPECIAL SHI-950-4		
NON-OPTICAL HIGH TEMP. (600K)		
SIZE	DRAWING NO.	REV.
D	D09-25-03A	c
P. N.	SCALE 5/16	SHT 1 OF 1