

NIST NIST NIST NIST NIST NIST NIST NIST

Fingerprint Features **Semantic Conformance** **Terms / Definitions / Scope**

Patrick Grother

March 5, 2010

Native vs. Proprietary

False Non-Match Rate at False Match Rate of 0.01	Supplier of Template Matcher		
		Proprietary	Native Standard
Supplier of Enrollment Template	NEC	0.0047	0.0129
	Cogent	0.0089	0.0136
	Sagem	0.0089	0.0140

PROPRIETARY	Representation of the template is completely unconstrained.
	Construe it to be the supplier's "best effort maximum accuracy" template.
NATIVE	Representation of the template is constrained by the INCITS 378 standard
	One supplier generates and matches the template.

Performance Interoperability

False Non-Match Rate at False Match Rate of 0.01		Supplier of Verification Template + Template Matcher		
		NEC		
Supplier of Enrollment Template	NEC	0.0129		

Red values refer to NATIVE performance : One vendor generates and matches all templates.

Performance Interoperability

False Non-Match Rate at False Match Rate of 0.01		Supplier of Verification Template + Template Matcher		
		NEC	Sagem	
Supplier of Enrollment Template	NEC	0.0129	0.0205	
	Sagem	0.0316	0.0140	

Red values refer to NATIVE performance : One vendor generates and matches all templates.

Performance Interoperability

False Non-Match Rate at False Match Rate of 0.01		Supplier of Verification Template + Template Matcher		
		NEC	Sagem	Cogent
Supplier of Enrollment Template	NEC	0.0129	0.0205	0.0300
	Sagem	0.0316	0.0140	0.0207
	Cogent	0.0417	0.0225	0.0136

Red values refer to NATIVE performance : One vendor generates both templates and matches them.

NIST NIST NIST NIST NIST NIST NIST



Terminology

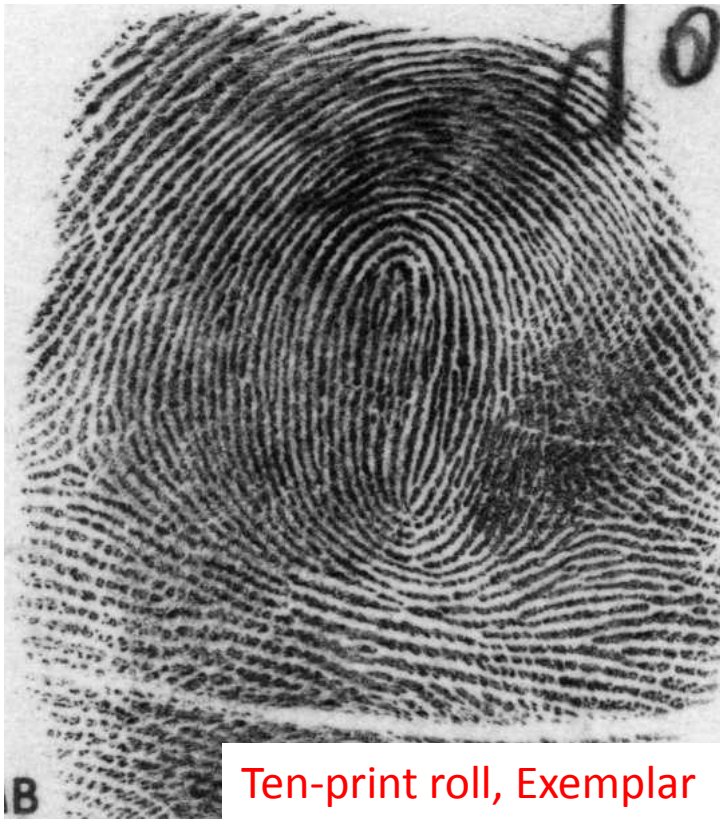
"Conventional" Fingerprints

Rolled (ink capture)

Flat (ink capture)

Latent Fingerprint

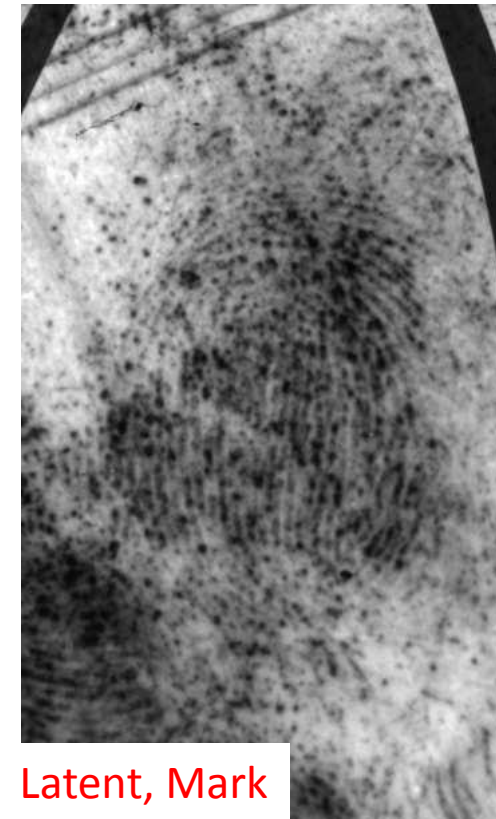
(powder "lift")



Ten-print roll, Exemplar



Flat, Exemplar



Latent, Mark

Extended Feature Sets :: Aims

- » A “brave new standard”
 - » Updates ANSI/NIST Type 9
 - » Enhanced handling of traditional features
 - » Larger “vocabulary” of features (e.g. “level 3”)
 - » Includes features already present in proprietary sets
 - » Intended to document everything seen by examiner
 - » Archival format: inter-examiner markup, legal evidence
- » NIST intent:
 - » Quantitative support for draft standard (a la IREX, MINEX)
 - » Bring standards-based implementations to market
 - » Support iterative R&D

