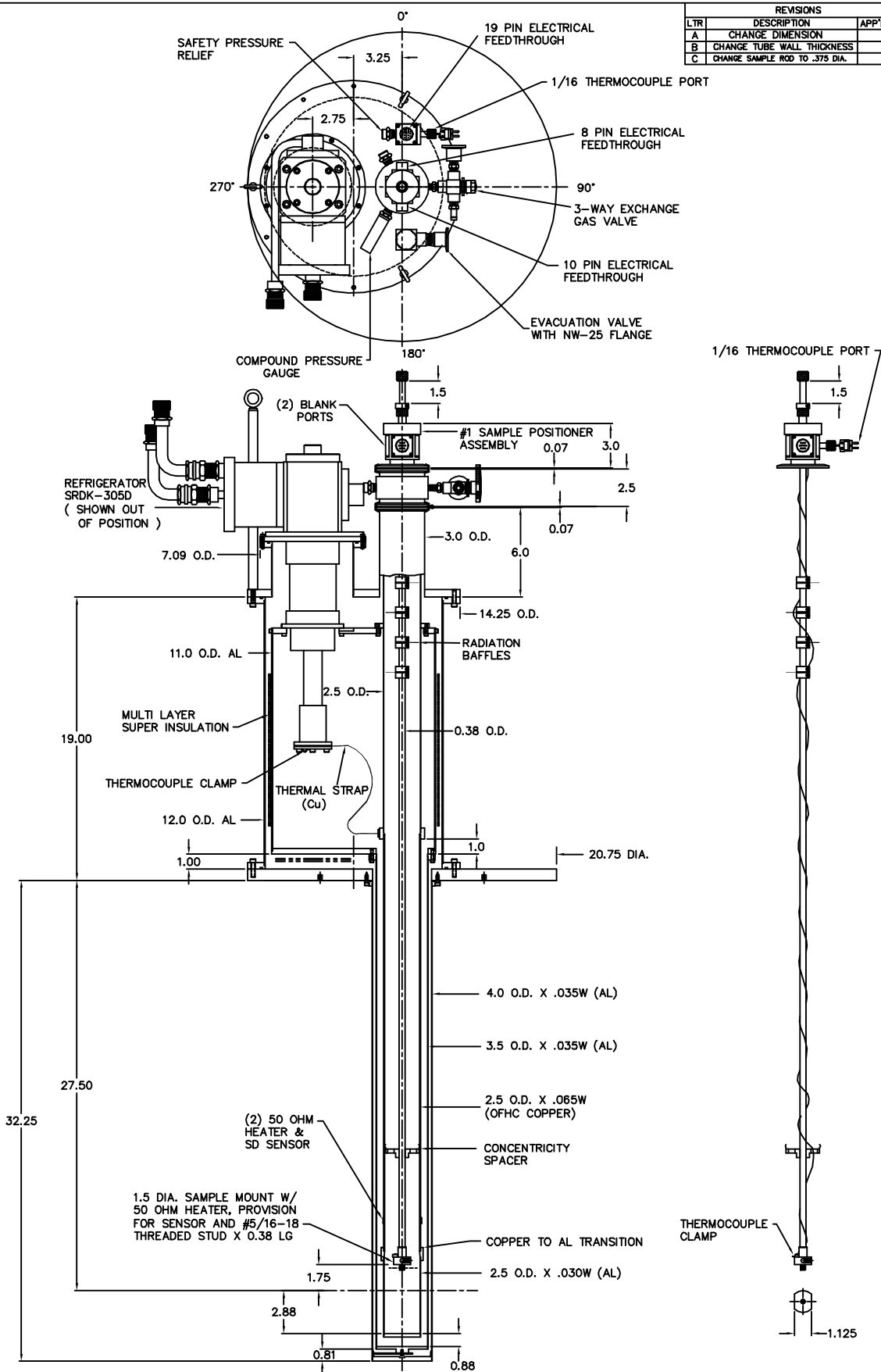


REVISIONS			
LTR	DESCRIPTION	APP'D.	DATE
A	CHANGE DIMENSION		11/11/01
B	CHANGE TUBE WALL THICKNESS		11/13/03
C	CHANGE SAMPLE ROD TO .375 DIA.		11/26/03



SYSTEM INCLUDES

- (1) #1 SAMPLE POSITIONER
- (1) #2 SAMPLE POSITIONER
- AS SPARE

#2 SAMPLE POSITIONER ASSEMBLY FOR 600K OPERATION

NOTE: ALL DIMENSIONS ARE IN INCHES

CONFIDENTIAL AND PROPRIETARY  
 THIS DRAWING AND/OR INFORMATION CONTAINED HEREIN IS THE SOLE PROPERTY OF THE JANIS RESEARCH COMPANY AND IS NOT TO BE RELEASED OR DIVULGED TO THIRD PARTIES WITHOUT THE EXPRESSED, WRITTEN CONSENT OF THE JANIS RESEARCH COMPANY, INC.

APPROVALS		
DEPT.	SIG.	DATE
DRN BY	B.F.	09/25/03
CHK BY		
ENG.		
D.G.		
RELEASED TO MFG BY		
CUST. APPROVAL BY		

JANIS RESEARCH CO. WILMINGTON, MA.		
TITLE SPECIAL SHI-950-4 NON-OPTICAL HIGH TEMP. (600K)		
SIZE D	DRAWING NO. D09-25-03A	REV. c
P. N.	SCALE 5/16	SHT 1 OF 1