



Burned wood retaining wall



Brick retaining wall attached to house



Burned wood retaining wall



Stone retaining wall attached to house

Item 34 Attached Retaining Walls – Replace retaining wall length equal to two times retaining wall height with noncombustible components.

Note: Selected photographs are included to illustrate each HMM hardening item. Additional vulnerabilities or hardening items may be seen in the photographs, but those are highlighted within their specific HMM item.

HMM Reference

NIST Technical Note 2205,  
Attached Retaining Walls,  
Table A, Item 34 (Page 61)

Project: HMM House

Size: A

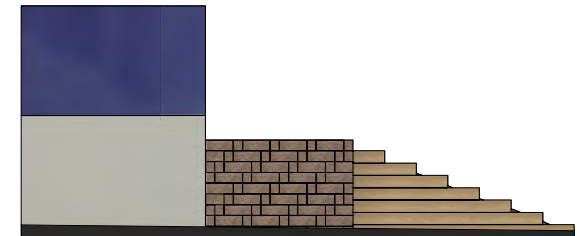
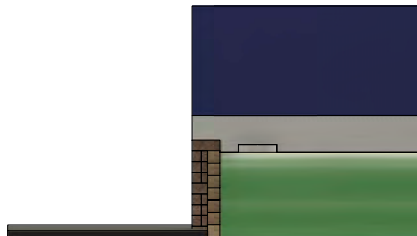
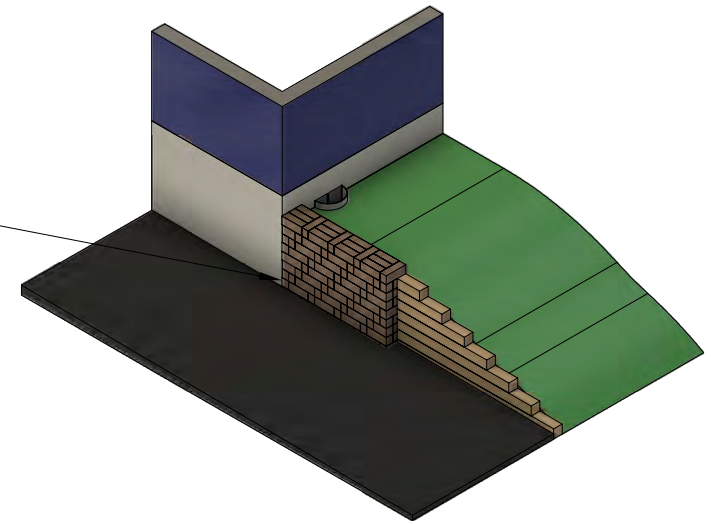
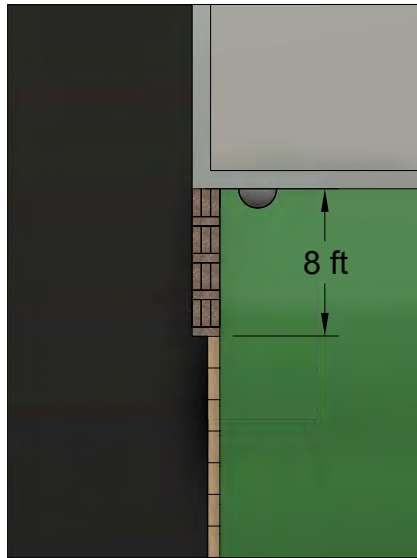
Scale: 1:125

Sheet: 1/1

- **Hardening Actions:** Replace retaining wall length equal to two times retaining wall height with ignition resistant components
- **Applicable Conditions:** Combustible retaining wall within two times the retaining wall height from the residence
- **Performance Goals:** Prevent flames from retaining wall from igniting residence.

Installation Cautions 

1. Seal retaining wall and house joint with ignition resistant material.



Notes

- Structural components of retaining wall must be maintained (must meet code).
- Ignition resistant material to 8 ft

Fire Hazards 

