




Item 10 Height of Wall Assembly – Hardening exterior walls and deck supports 2 ft above ground will prevent windblown debris and embers from igniting the wall.

Note: Selected photographs are included to illustrate each HMM hardening item. Additional vulnerabilities or hardening items may be seen in the photographs, but those are highlighted within their specific HMM item.

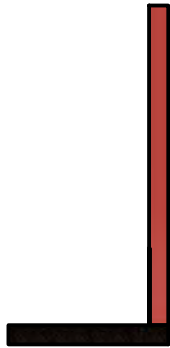
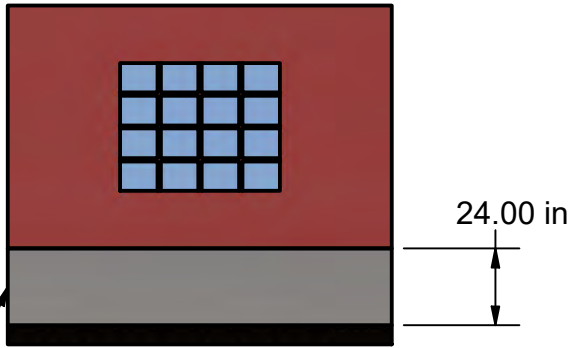
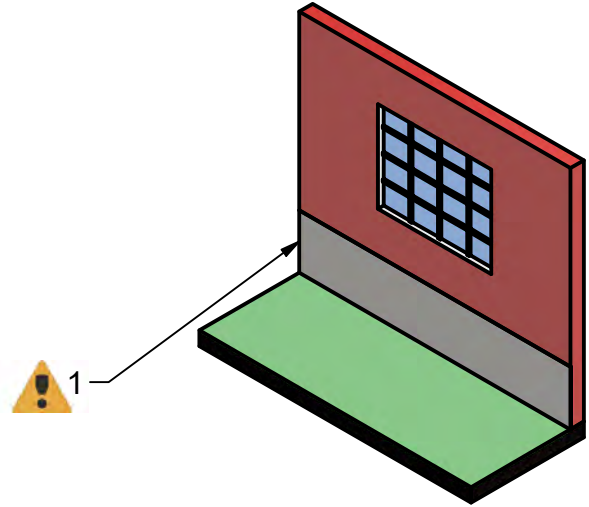


|   |            |
|---|------------|
| HMM Reference   |            |
| NIST Technical Note 2205,<br>Height of Wall Assembly,<br>Table A, Item 10 (Page 58) |            |
| Project: HMM House  | Size: A    |
| Scale: 1:60   | Sheet: 1/1 |

- **Hardening Action:** Replace exterior wall covering with noncombustible material for first two ft (from ground) and add metal flashing to protect bottom edge sheathing
- **Applicable Conditions:** All sheathing within two feet of the ground
- **Performance Goals:** Prevent windblown debris and embers from igniting the wall

Installation Cautions 

1. Seal noncombustible wall covering to house exterior.



- Notes
- Metal flashing is required for all claddings, including ignition resistant materials

Fire Hazards 

1. If superheated by close proximity to flame, metal flashing risks igniting siding