

Theory

Biofidel
measuring system

Data acquisition
& Evaluation

A faint, light gray illustration of an industrial robot arm is positioned in the background on the left side of the slide. The arm is articulated and has a gripper at the end.

HRC proven safety

Theory

Biofidel
measuring system

Data acquisition
& Evaluation

measurement technology and methods for the validation of a HRC application

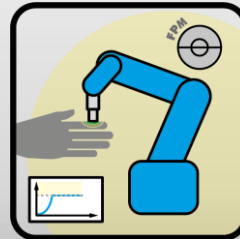
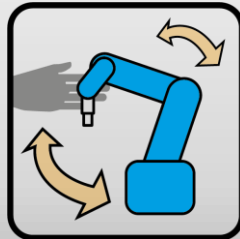
Dr. Daniel Meixner

GTE Industrieelektronik GmbH

► Theory

Biofidel
measuring system

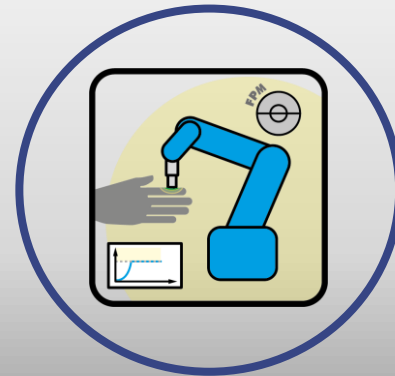
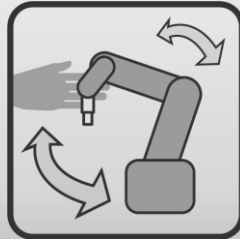
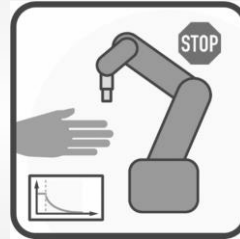
Data acquisition
& Evaluation



► Theory

Biofidel
measuring system

Data acquisition
& Evaluation



Power and force limiting



- DIN EN ISO 10218
- ISO / TS 15066
- RIA TR R15.806-2018



- DGUV Information
FB-HM 080

Literature



- DIN EN ISO 10218
- **ISO / TS 15066**
- **RIA TR R15.806-2018**



thresholds



- DGUV Information
FB-HM 080



- DIN EN ISO 10218
- **ISO / TS 15066**
- **RIA TR R15.806-2018**



thresholds



- DGUV Information
FB-HM 080





- DIN EN ISO 10218
- **ISO / TS 15066**
- **RIA TR R15.806-2018**



thresholds



- DGUV Information
FB-HM 080



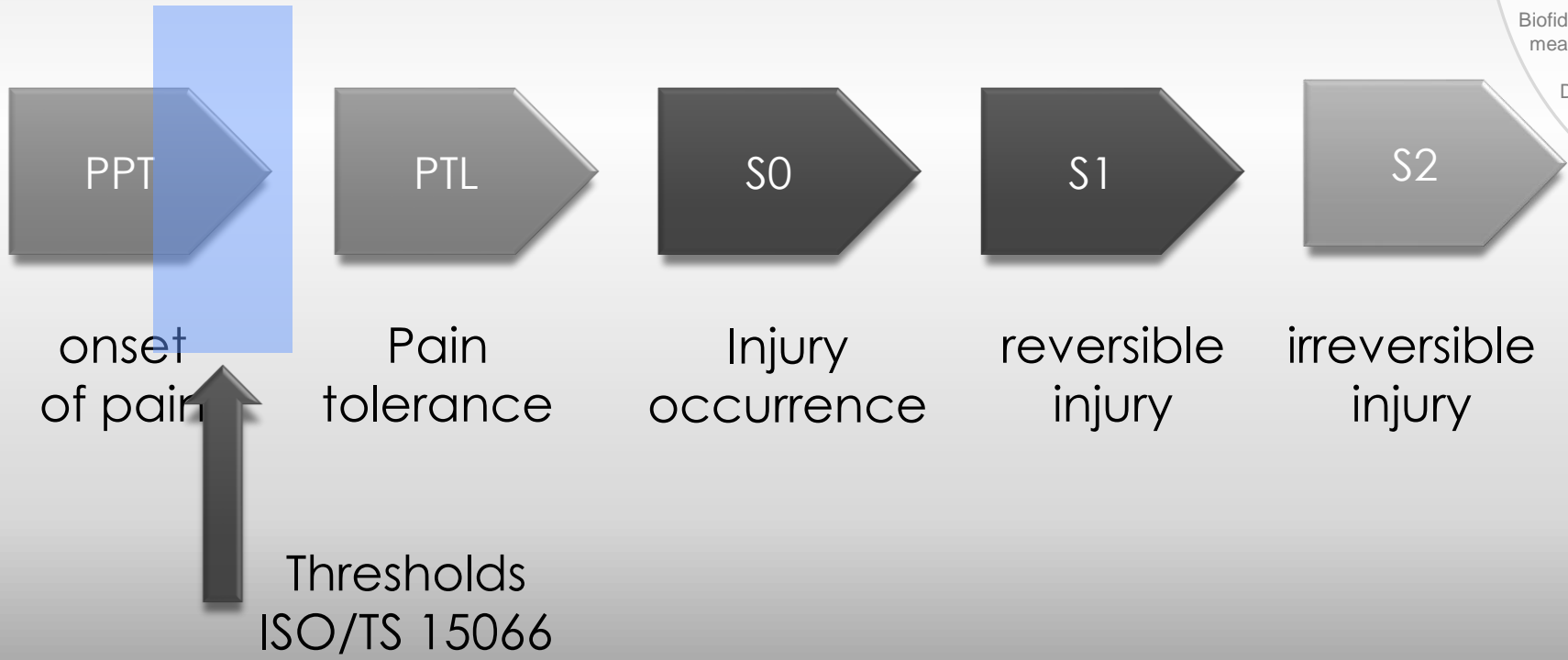
Thresholds

- ▶ Theory
- Biofidel measuring system
- Data acquisition & Evaluation



Thresholds

- ▶ Theory
- Biofidel measuring system
- Data acquisition & Evaluation



Thresholds

IFA-Entwicklung
Versuchseinrichtung Druckalgometer
(100 Probanden, ca. 9500 Messungen)



Schläfenknochen



Dornfortsatz
7. Halswirbel

Speichenknochen



- Theory
- Biofidel measuring system
- Data acquisition & Evaluation

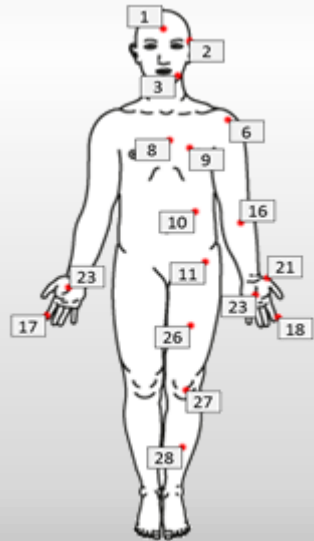
Theory

Thresholds

► Theory

Biofidel
measuring system

Data acquisition
& Evaluation



- Blind
- Increasing force 2 N/s or 5 N/s
- Pain Trigger and release by switch

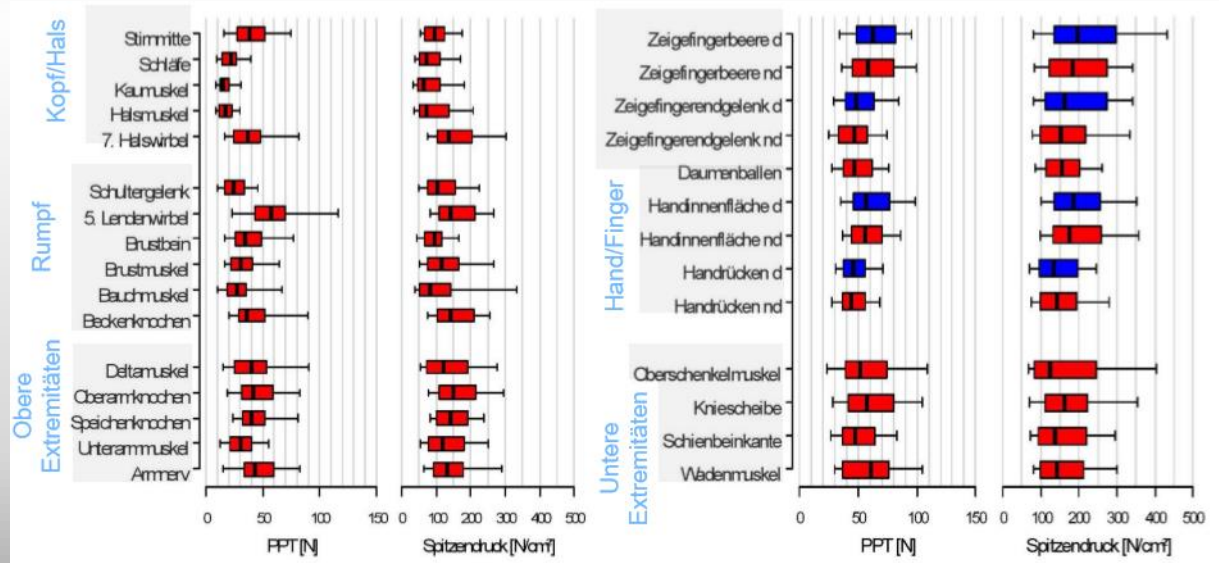
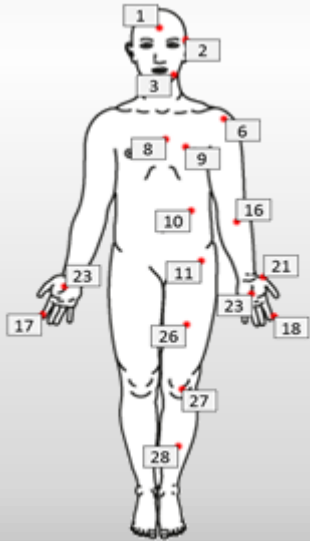
Theory

Thresholds

► Theory

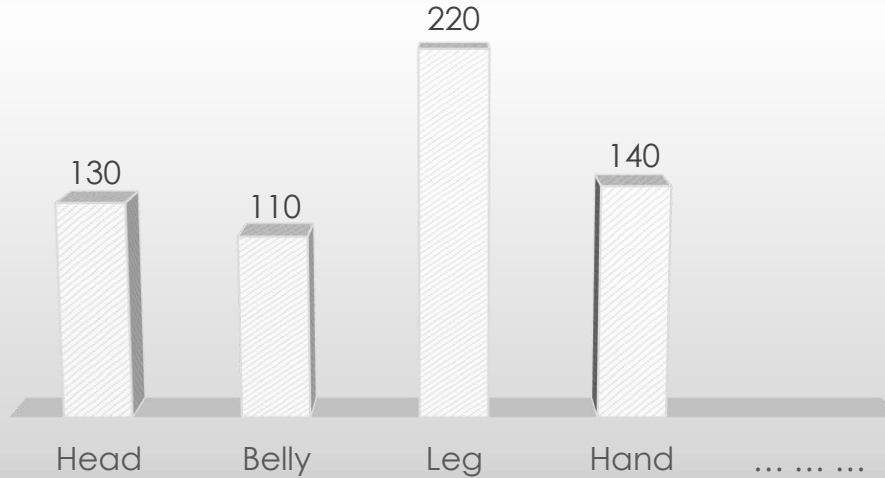
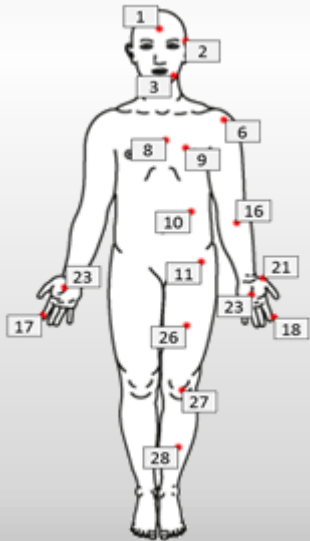
Biofidel
measuring system

Data acquisition
& Evaluation



Thresholds

- ▶ Theory
- Biofidel measuring system
- Data acquisition & Evaluation



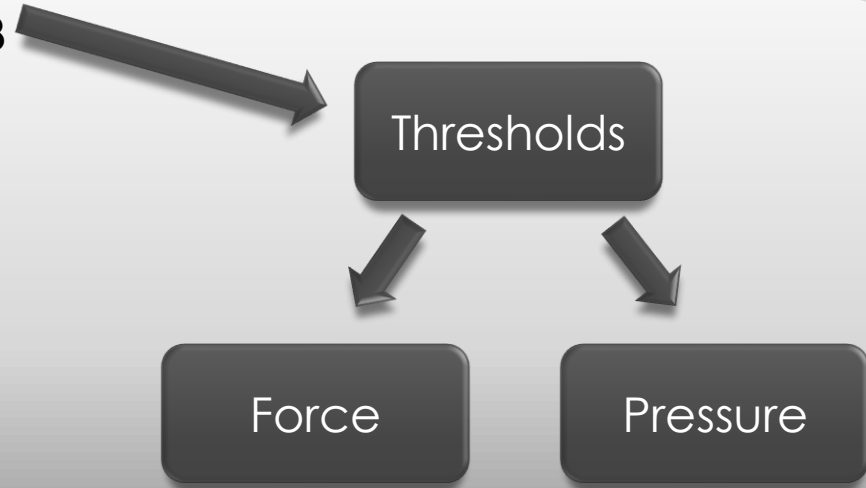
Literature



- DIN EN ISO 10218
- **ISO / TS 15066**
- **RIA TR R15.806-2018**

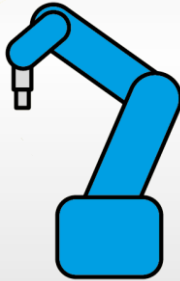


- DGUV Information
FB-HM 080

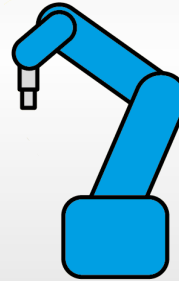


Force & pressure

Force



Pressure



► Theory

Biofidel
measuring system

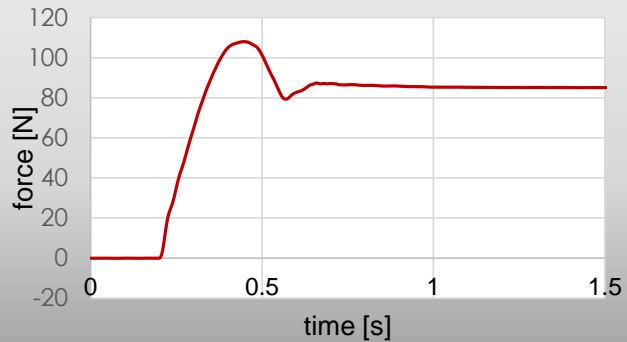
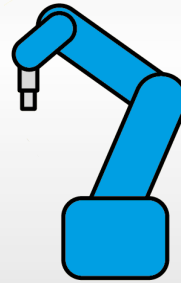
Data acquisition
& Evaluation

Force & pressure

Force



Pressure



Theory

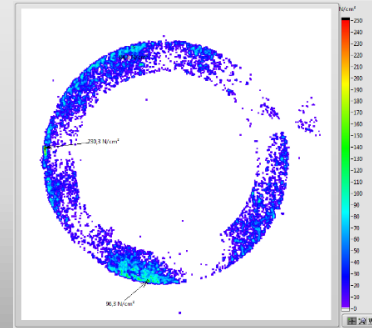
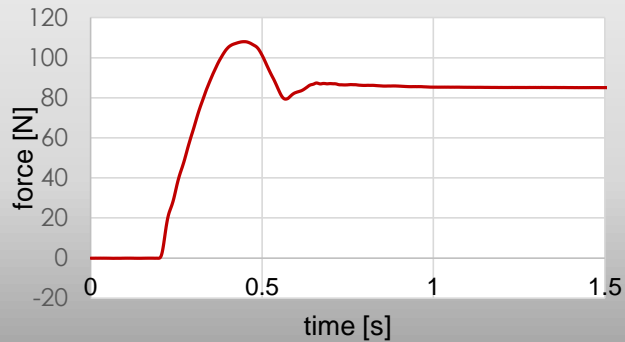
Force & pressure

- ▶ Theory
- Biofidel measuring system
- Data acquisition & Evaluation

Force



Pressure



Theory

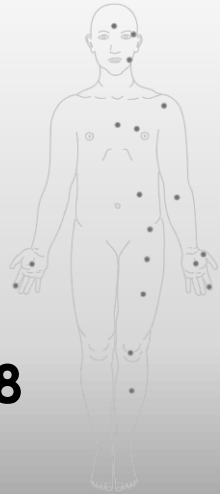
Theory

▸ Biofidel
measuring system

Data acquisition
& Evaluation

Measurement of collision forces and pressures

According to **FB HM 080 & RIA TR R15.806-2018**

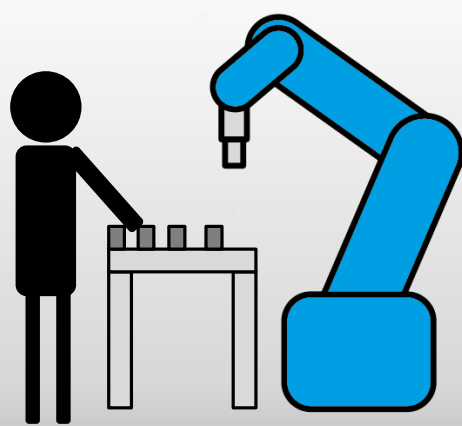


Substitution

Theory

Biofidel
measuring system

Data acquisition
& Evaluation

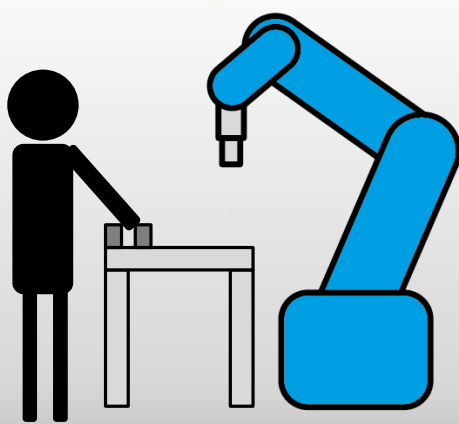


Substitution

Theory

Biofidel
measuring system

Data acquisition
& Evaluation

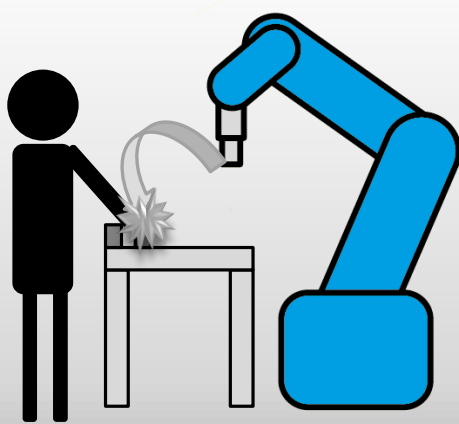


Substitution

Theory

Biofidel
measuring system

Data acquisition
& Evaluation

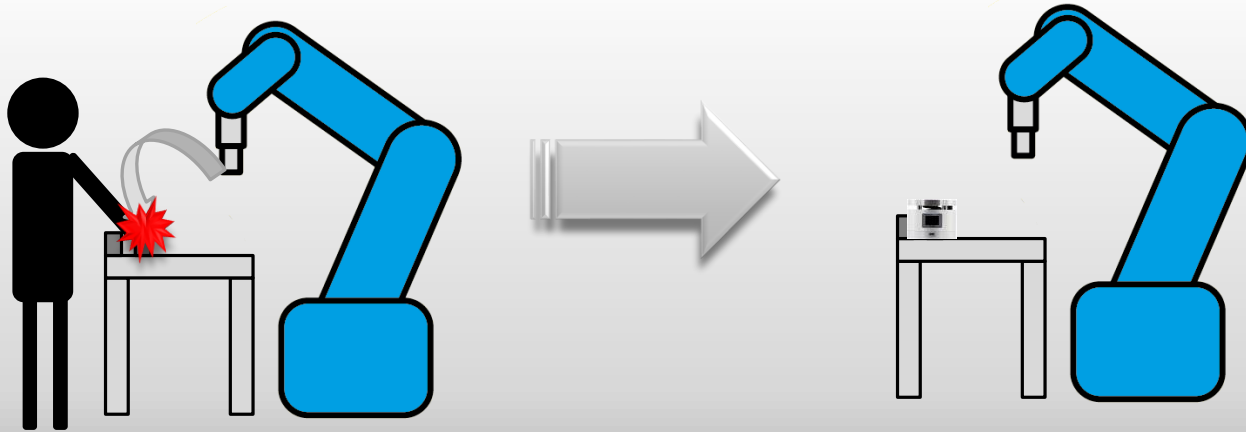


Substitution

Theory

Biofidel
measuring system

Data acquisition
& Evaluation

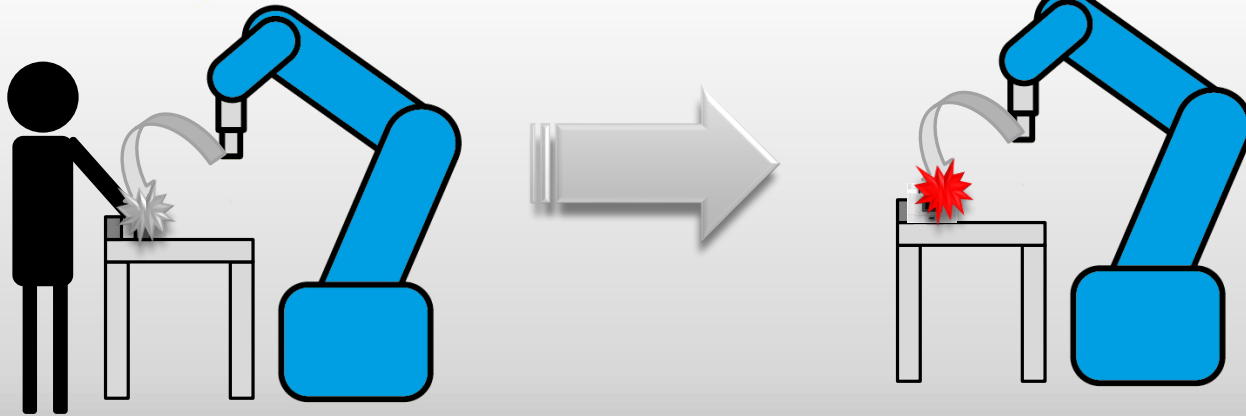


Substitution

Theory

Biofidel
measuring system

Data acquisition
& Evaluation

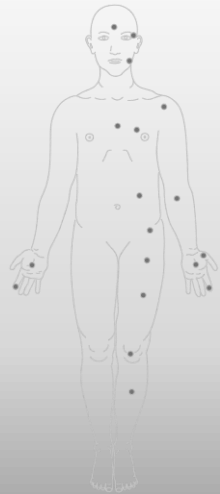
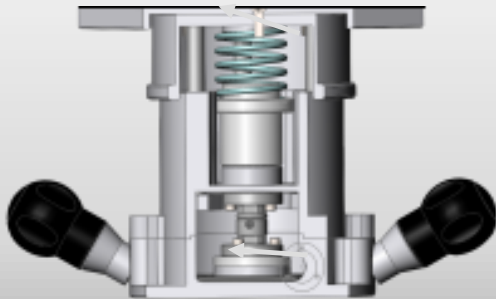


Measuring system

Theory

▶ Biofidel
measuring system

Data acquisition
& Evaluation



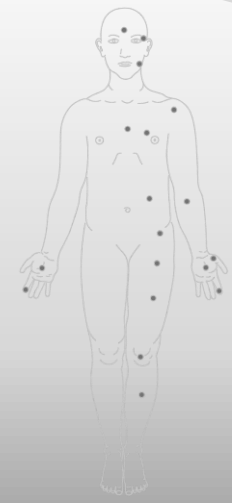
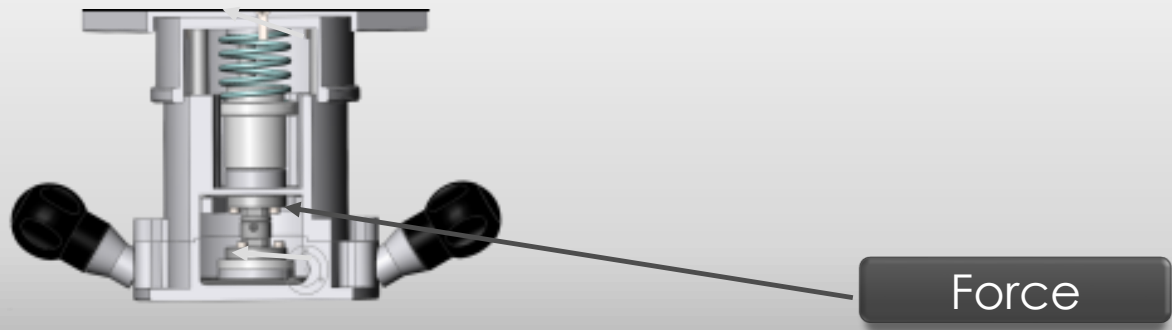
Measuring system

Measuring system

Theory

▶ Biofidel measuring system

Data acquisition & Evaluation

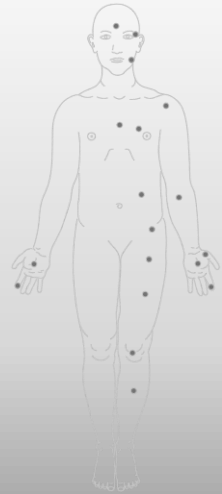
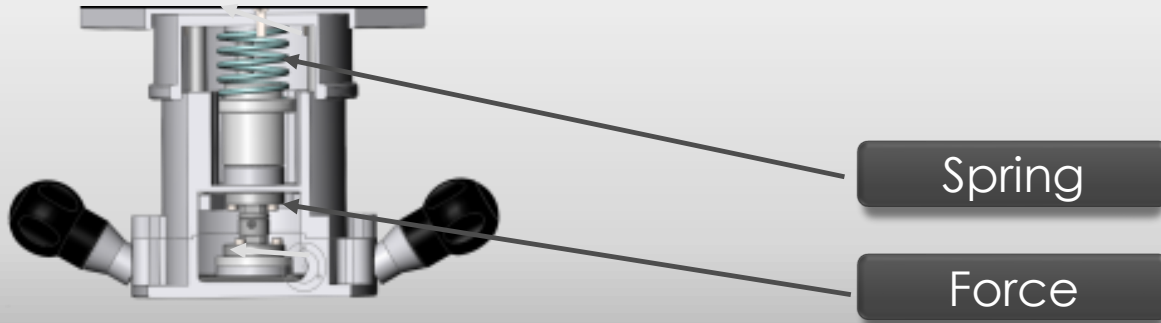


Measuring system

Theory

▶ Biofidel
measuring system

Data acquisition
& Evaluation



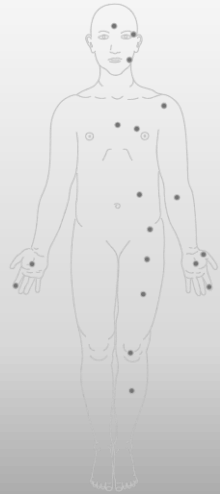
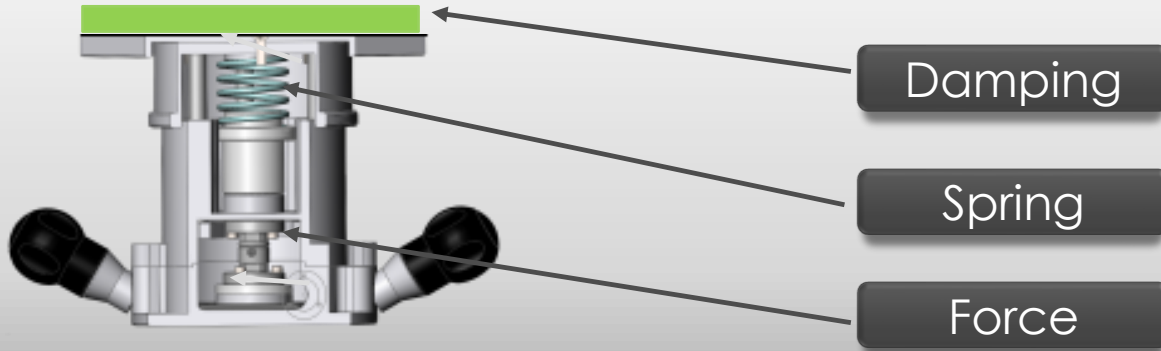
Measuring system

Measuring system

Theory

▶ Biofidel
measuring system

Data acquisition
& Evaluation



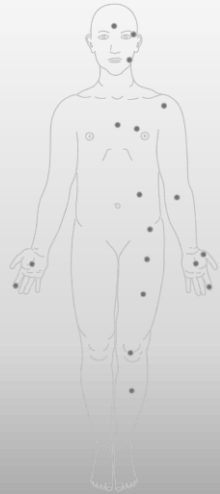
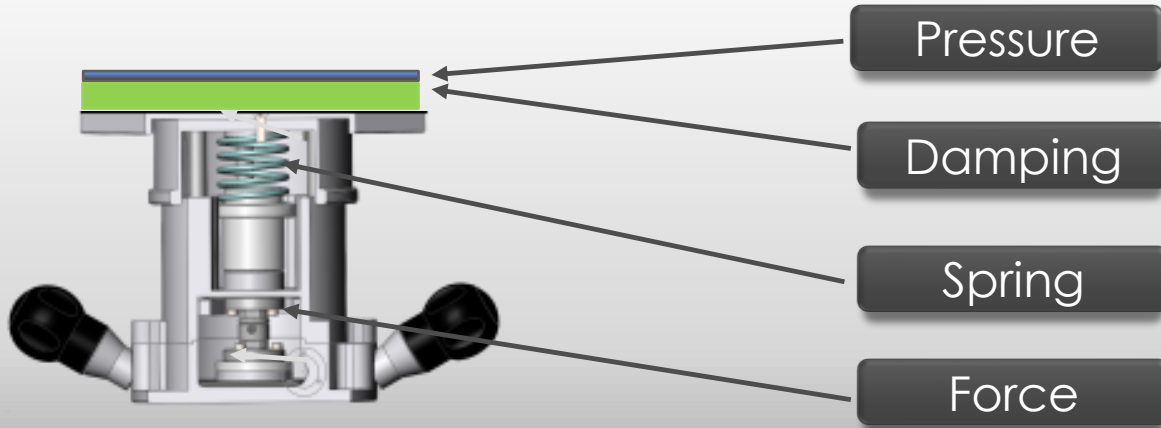
Measuring system

Measuring system

Theory

▶ Biofidel measuring system

Data acquisition & Evaluation



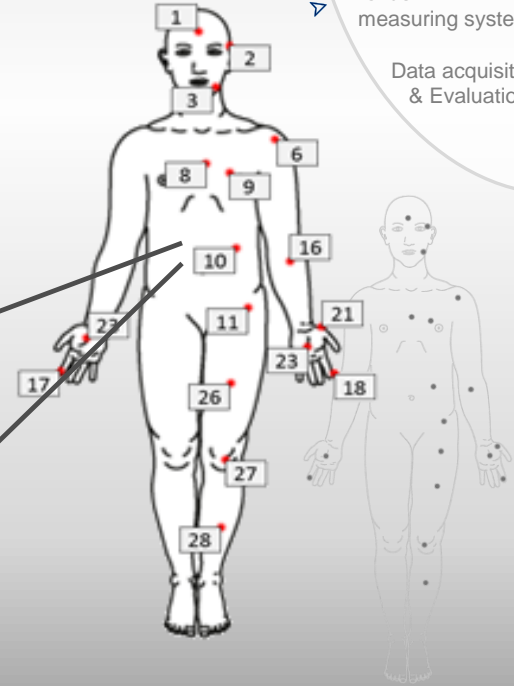
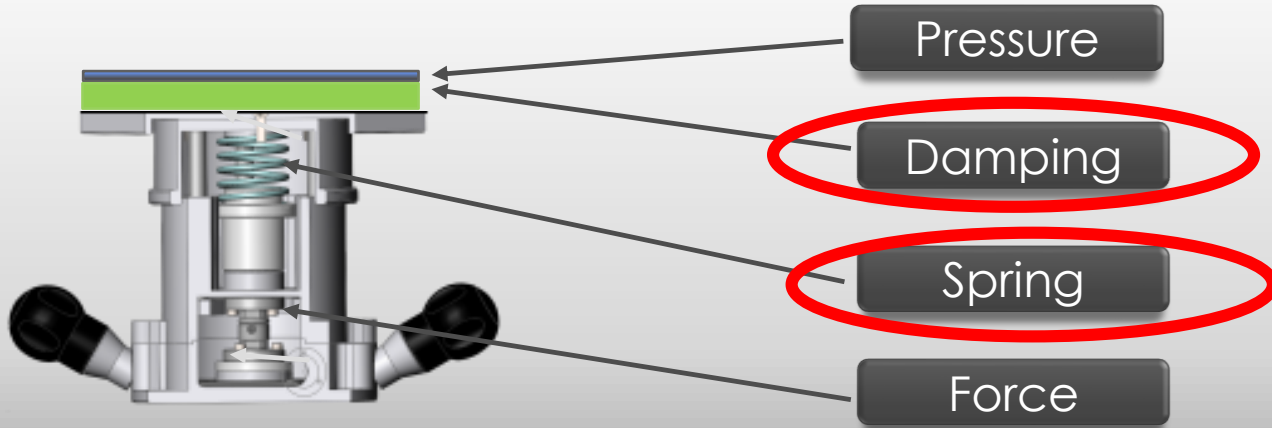
Measuring system

Measuring system

Theory

▶ Biofidel measuring system

Data acquisition & Evaluation



Measuring system

Measuring set up according FB-HM 080 & RIA TR R.15.806-2018

Theory

▶ Biofidel measuring system

Data acquisition & Evaluation

Body region	Damping material K1 [Shore A]	Thick-ness [mm]	Spring K2 [N/mm]
Skull and forehead	critical zone		150
Face			75
Hand and finger	70	7	75
Neck			50
Lower arm and wrist			40
Chest			25
Pelvis			25
Lower leg	30	14	60
Thigh and knee			50
Back and shoulders			35
Upper arm and elbow			30
Abdomen	10	21	10

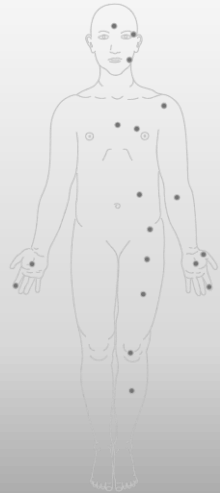


Measuring system

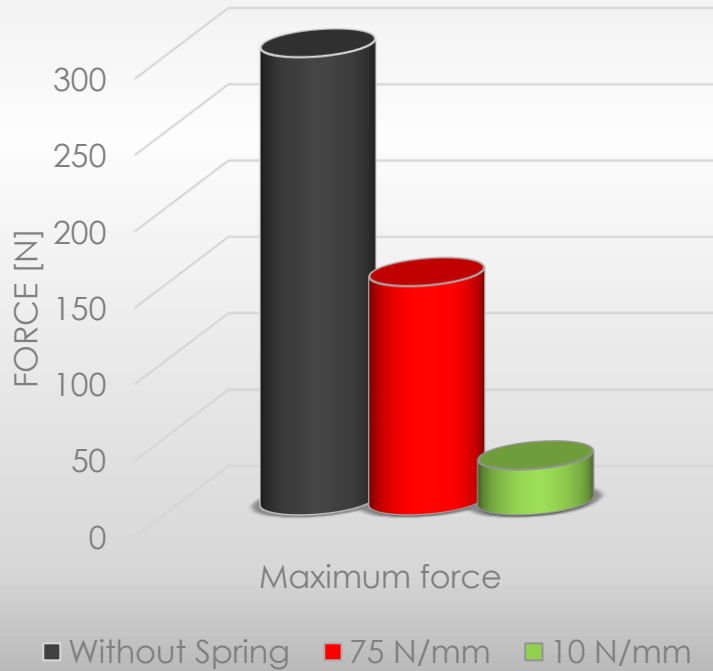
Theory

▶ Biofidel
measuring system

Data acquisition
& Evaluation



Spring



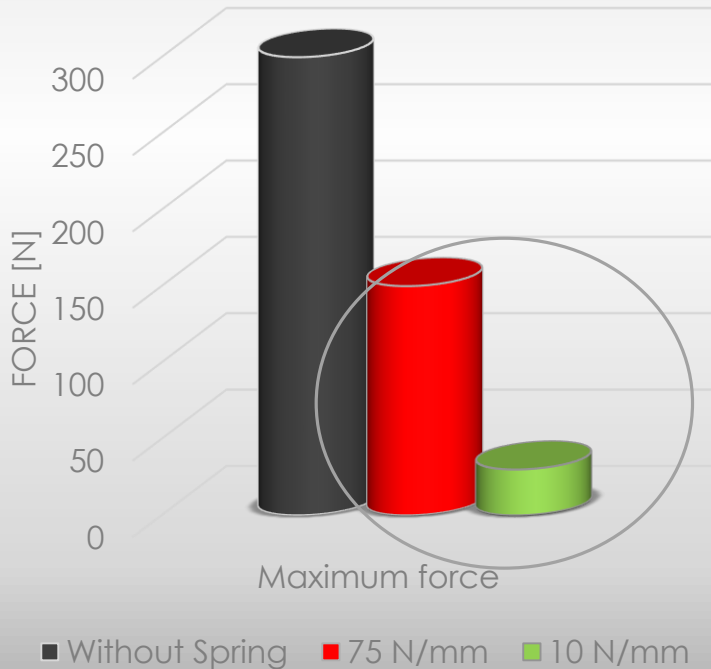
Measuring system

Spring

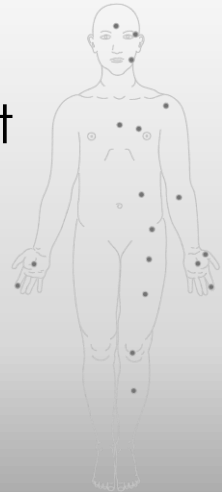
Theory

▶ Biofidel measuring system

Data acquisition & Evaluation



difference depends on the robot type and its movement



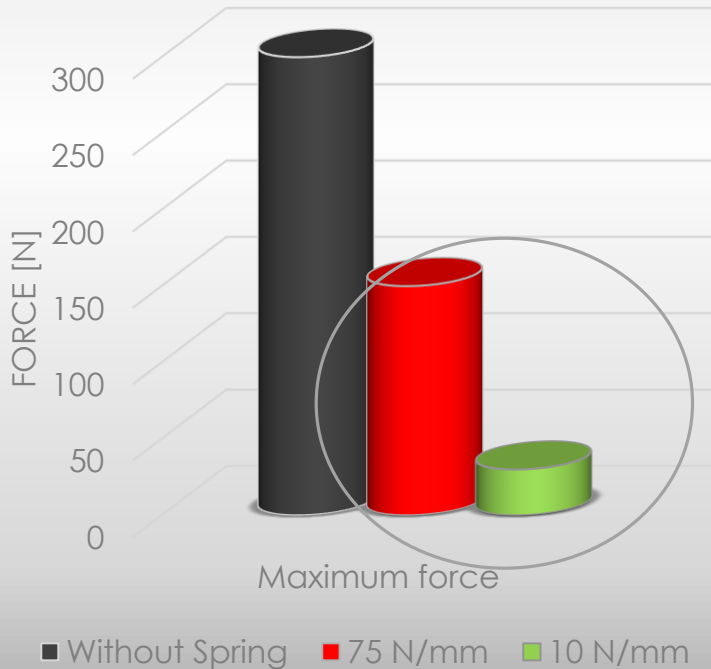
Measuring system

Spring

Theory

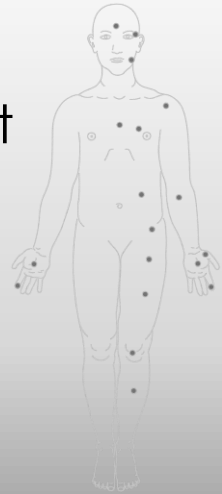
▶ Biofidel
measuring system

Data acquisition
& Evaluation



difference depends on the
robot type and its movement

According to **FB HM 080**
possible to use **harder** spring

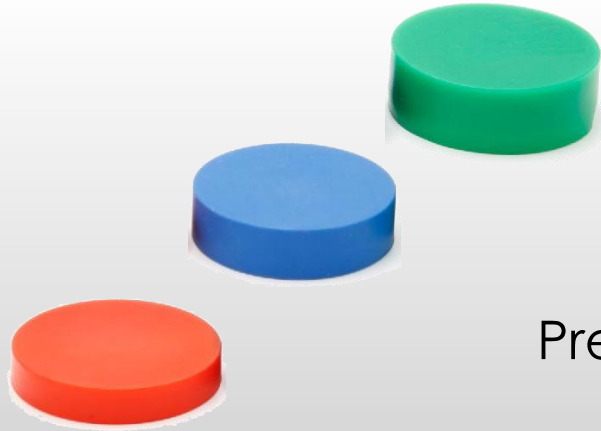


Damping element

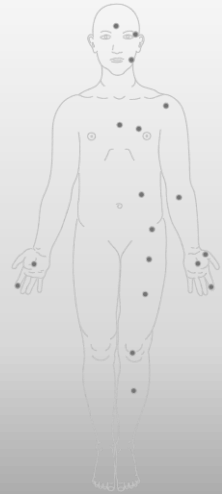
Theory

▶ Biofidel
measuring system

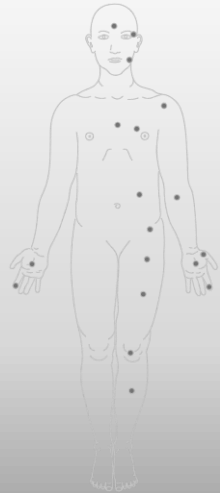
Data acquisition
& Evaluation



Pressure distribution



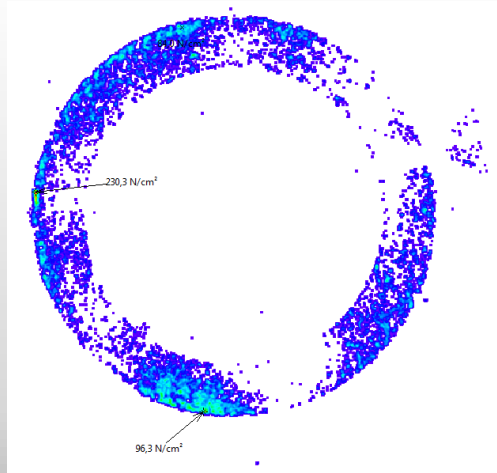
Measuring system



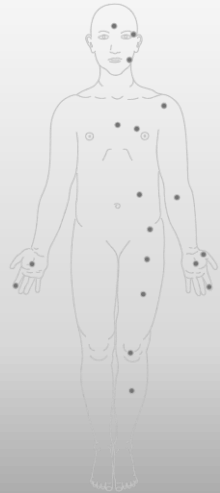
Damping element

Pressure distribution

without



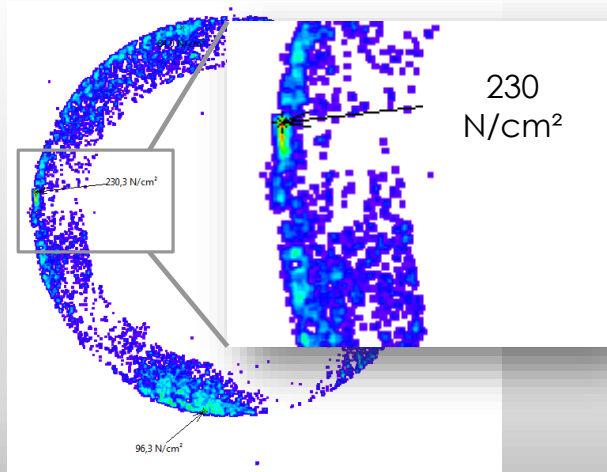
Measuring system



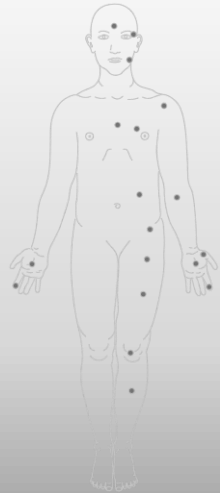
Damping element

Pressure distribution

without



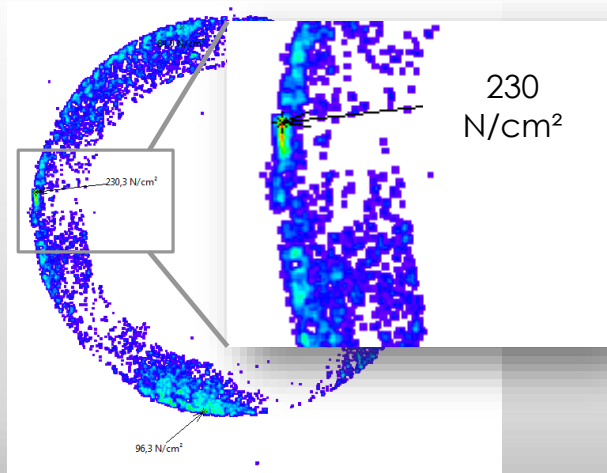
Measuring system



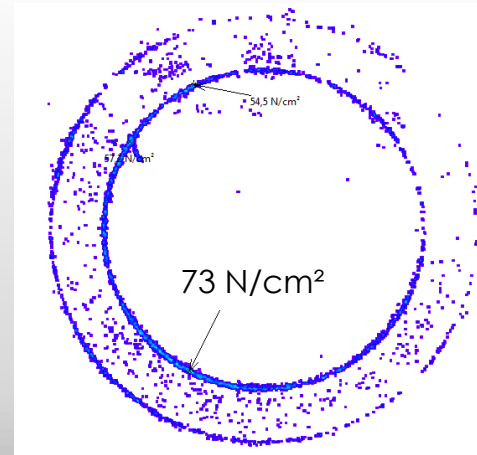
Damping element

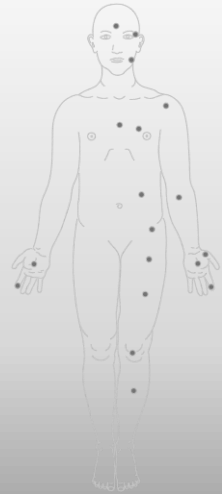
Pressure distribution

without



with

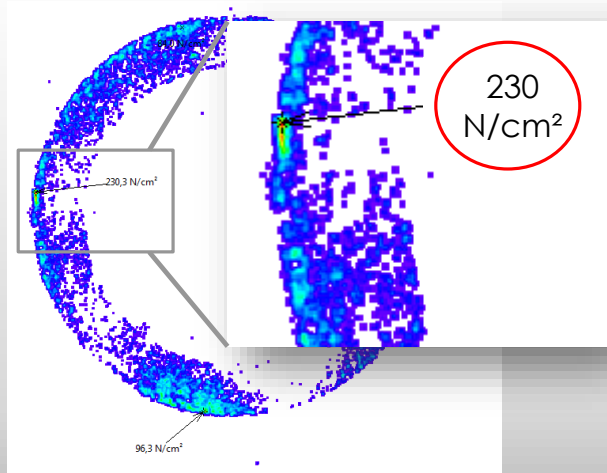




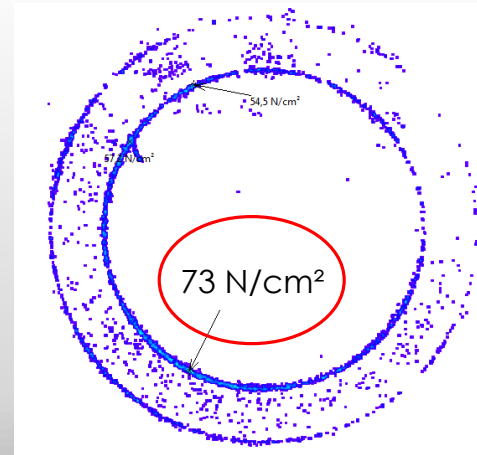
Damping element

Pressure distribution

without



with

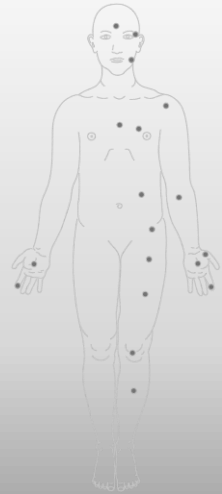
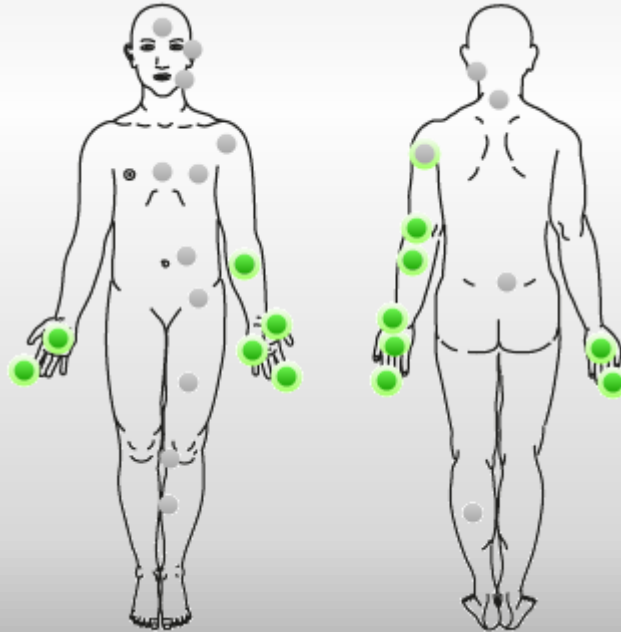
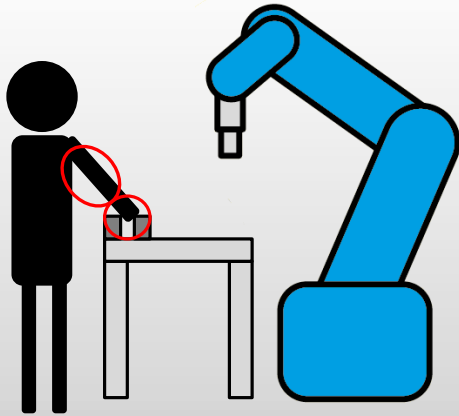


Substitution

Theory

▶ Biofidel
measuring system

Data acquisition
& Evaluation



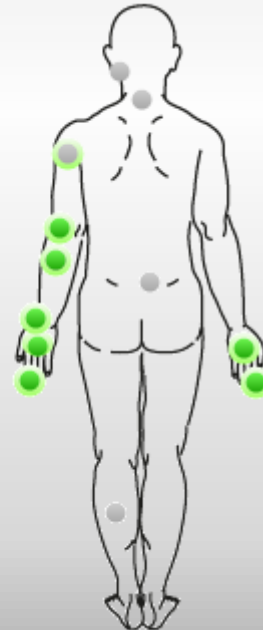
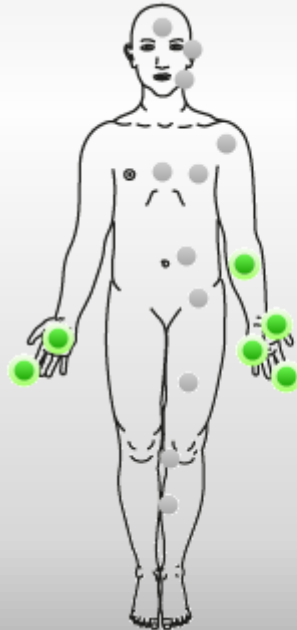
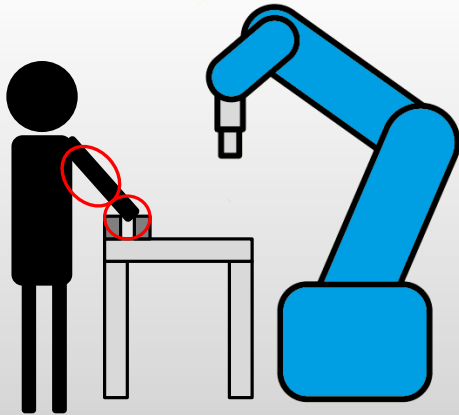
Measuring system

Substitution

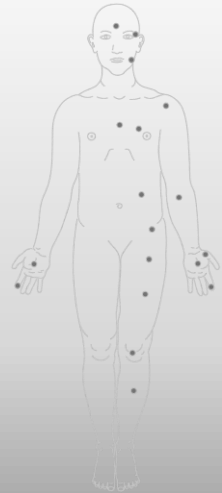
Theory

▶ Biofidel
measuring system

Data acquisition
& Evaluation



13 Points



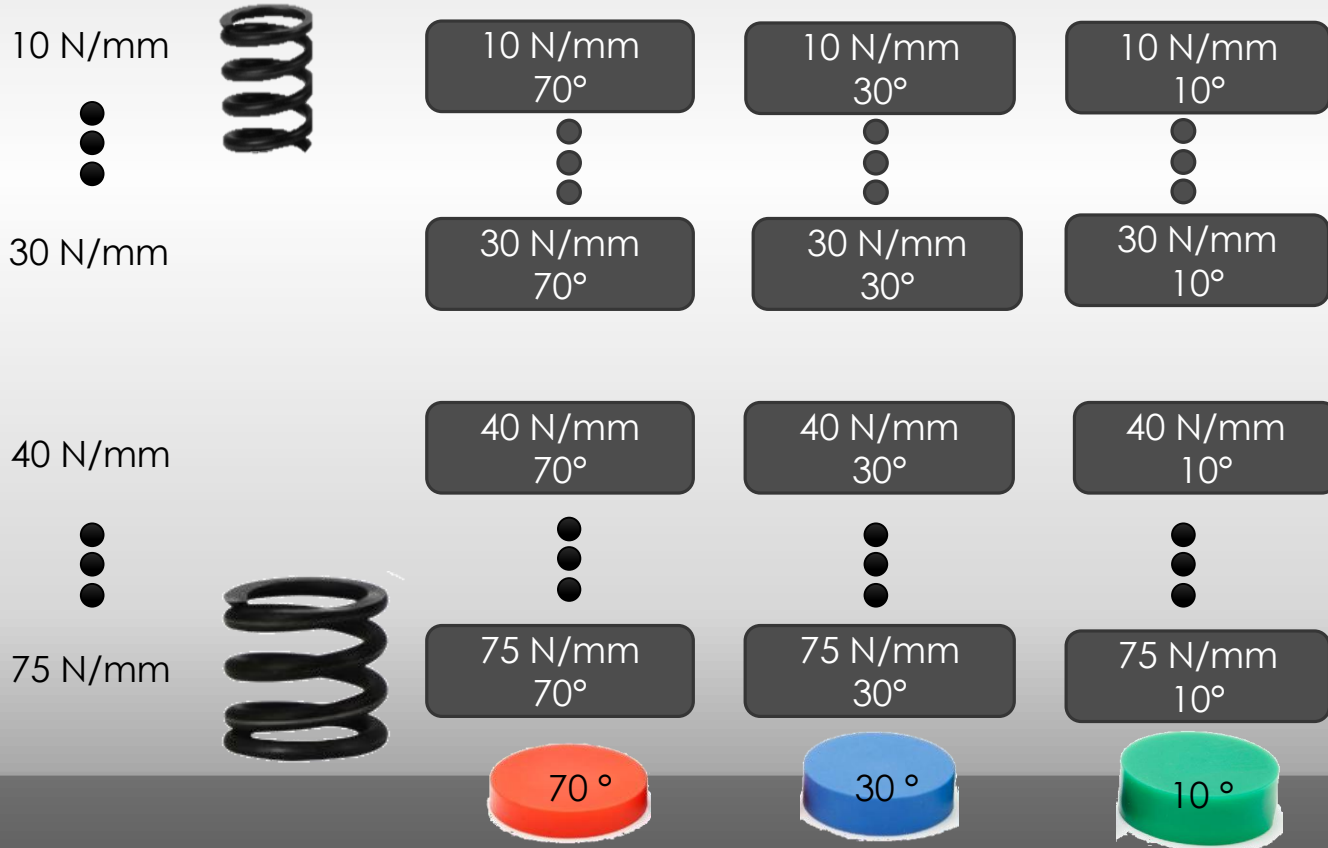
Measuring system

Substitution

Theory

Biofidel
measuring system

Data acquisition
& Evaluation

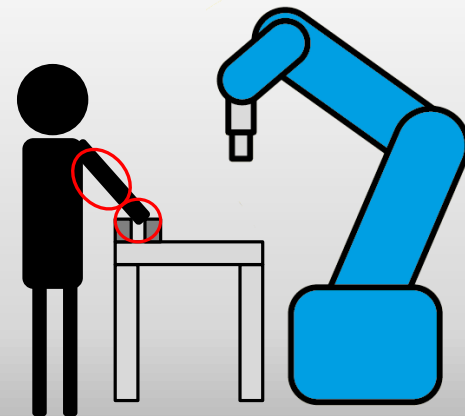
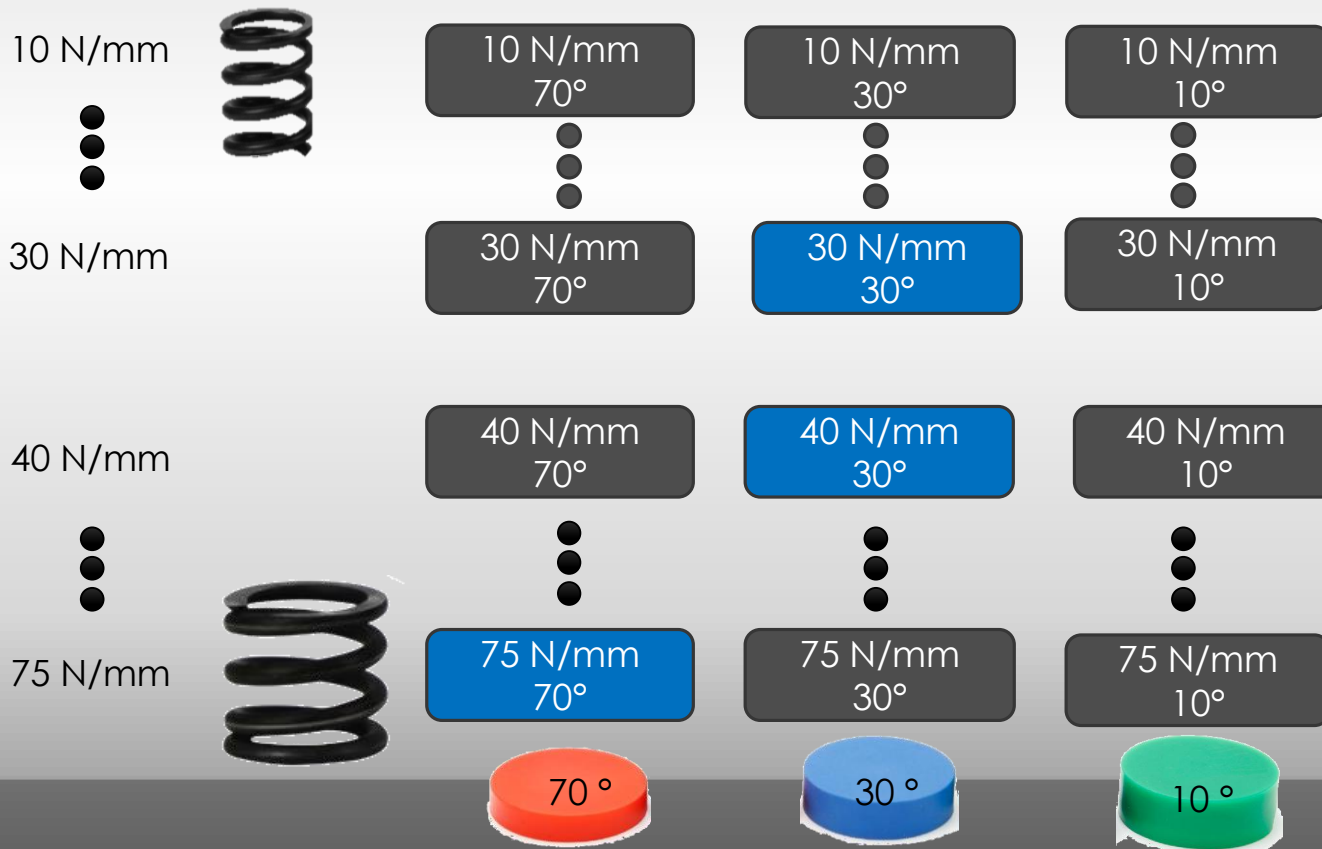


Substitution

Theory

Biofidel
measuring system

Data acquisition
& Evaluation

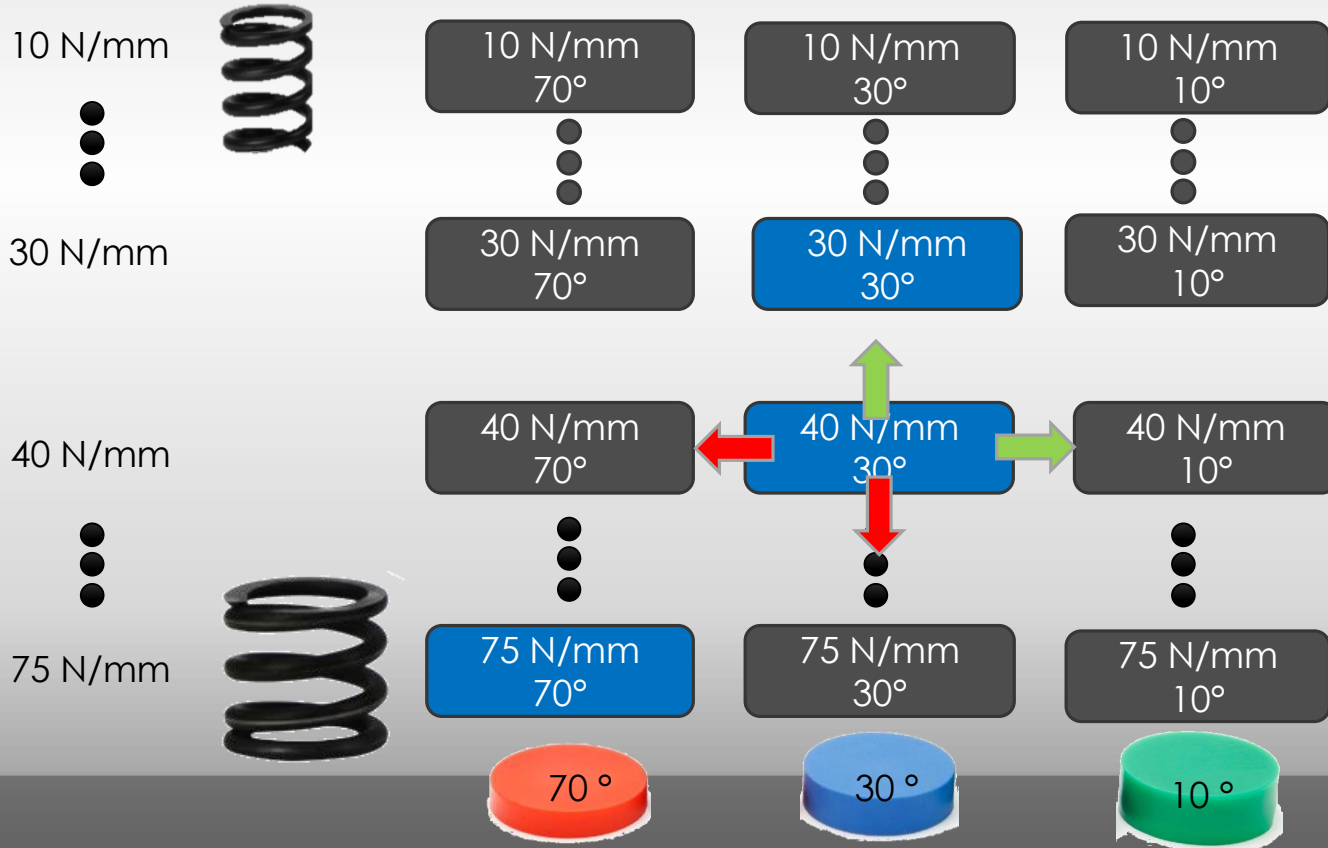


Substitution

Theory

Biofidel
measuring system

Data acquisition
& Evaluation

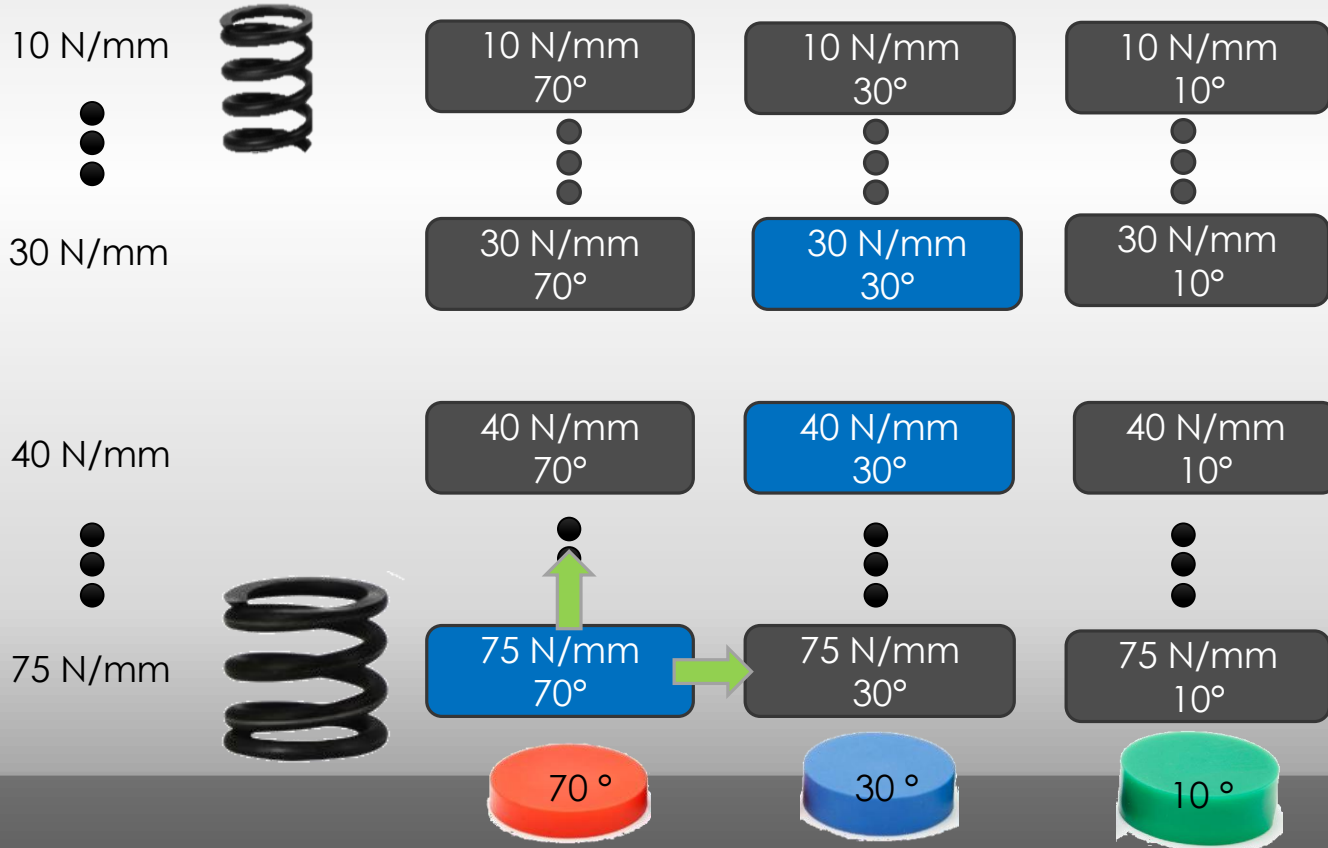


Substitution

Theory

Biofidel
measuring system

Data acquisition
& Evaluation

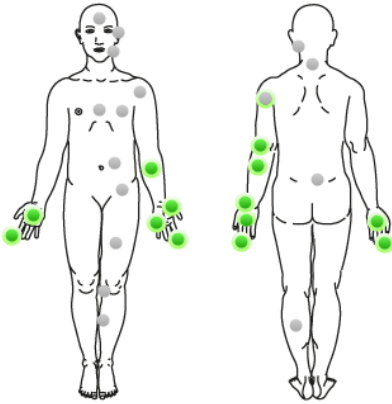


Substitution

Theory

Biofidel
measuring system

Data acquisition
& Evaluation



- Skull and forehead
- Face
- Nape
- Back and shoulders
- Chest
- Belly
- Pelvis
- Upper arm and elbow
- Underarm and wrist
- Hand and finger
- Thigh and knee

Spring: 30 N/mm

Shore hardness: 30 ° Shore A

Material thickness: 14 mm

	Force	Pressure
Static:	150 N	190 N/cm ²
Transient:	300 N	380 N/cm ²

measurements

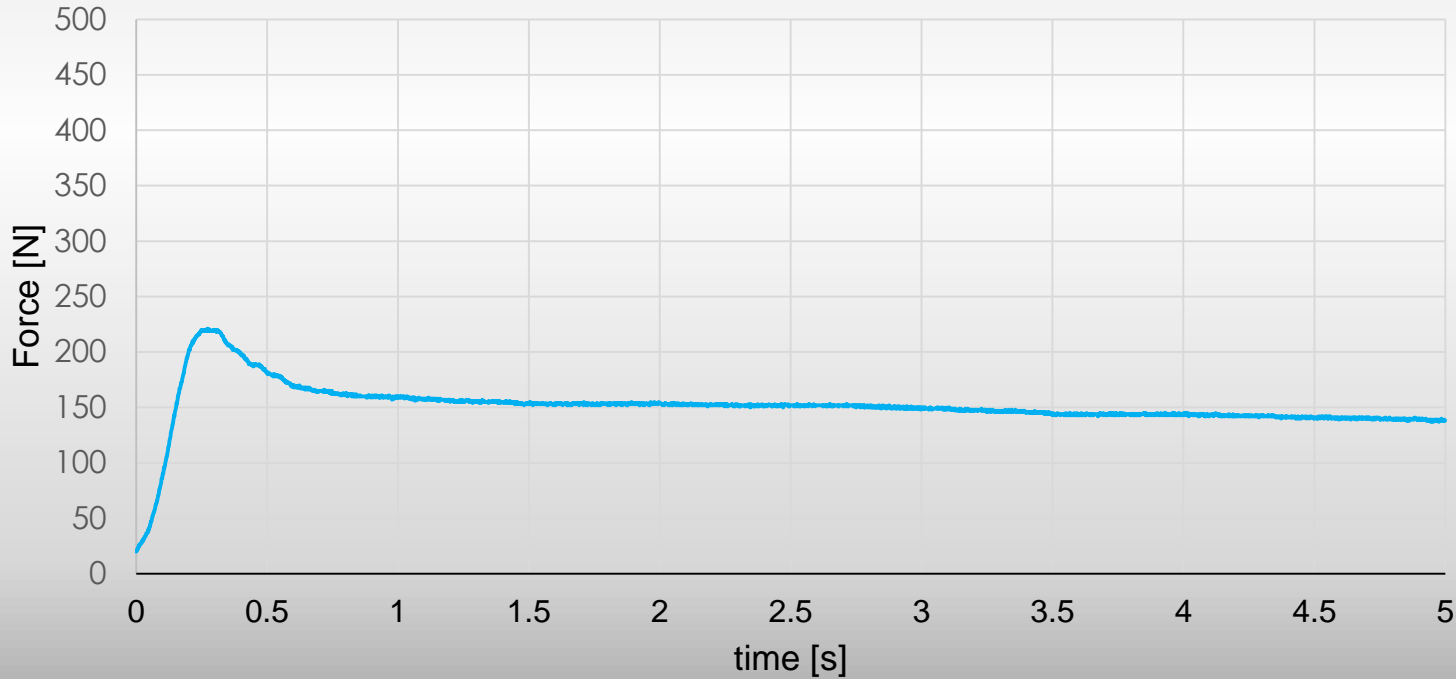
Measurement	Force [N]		Pressure [N/cm ²]	
	Transient	Static	Transient	Static
30 N/mm 30 °ShoreA (blue)	300	150	440	220
40 N/mm 70 °ShoreA (red)	320	160	360	180
75 N/mm 70 °ShoreA (red)	280	140	380	190

Evaluation

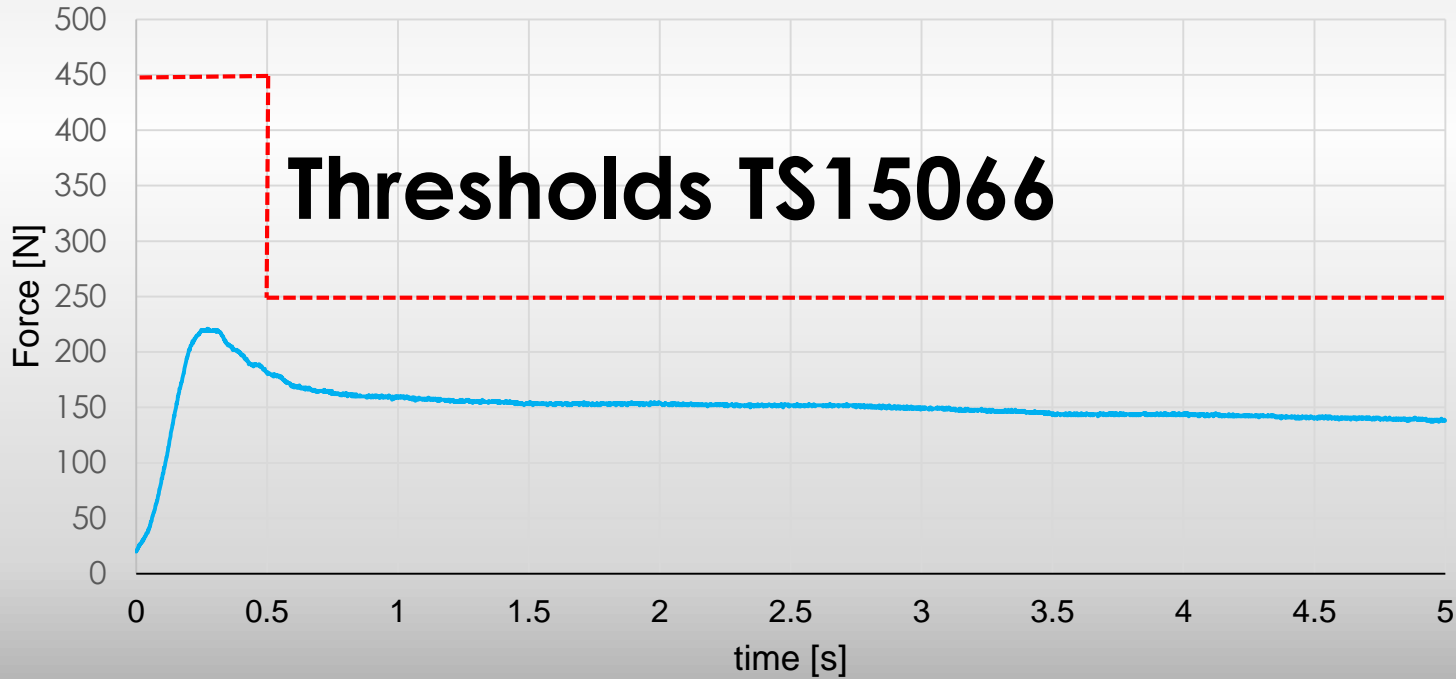
Theory

Biofidel
measuring system

▾ Data acquisition
& Evaluation



Data acquisition

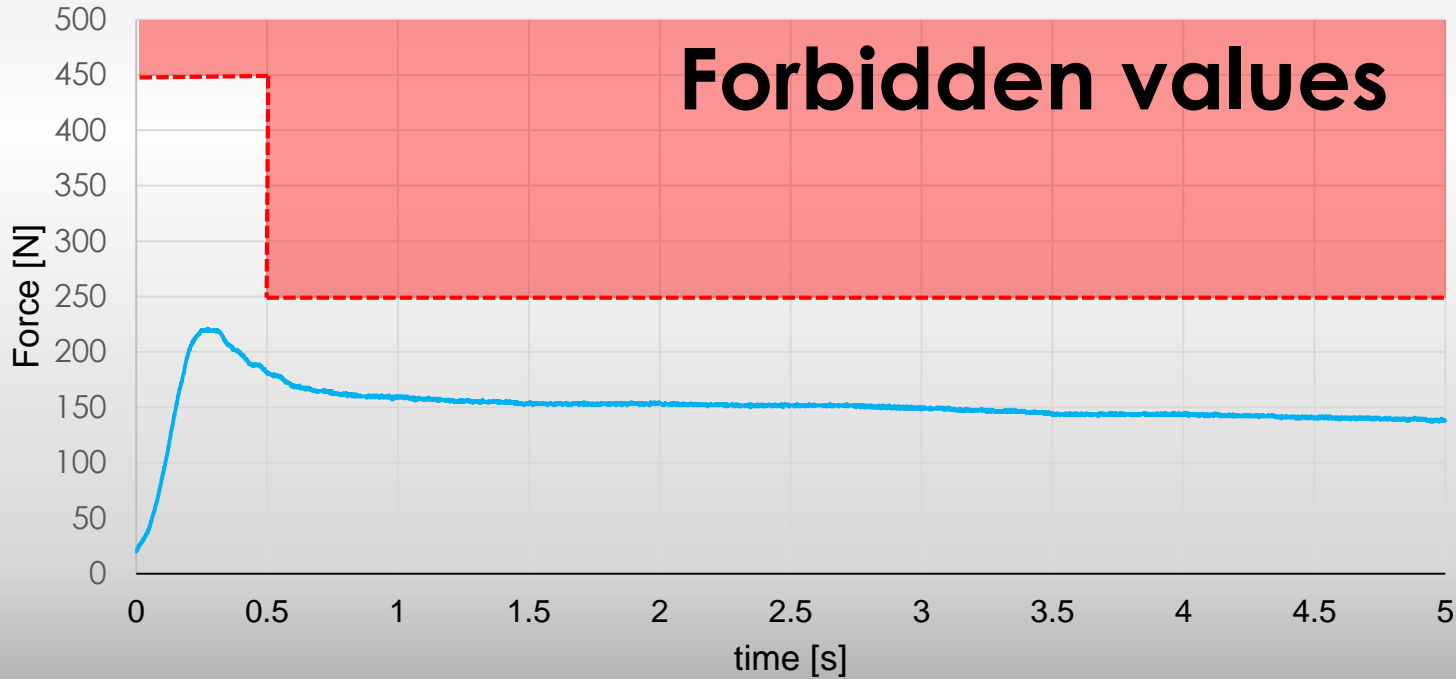


Evaluation

Theory

Biofidel
measuring system

▾ Data acquisition
& Evaluation



Data acquisition

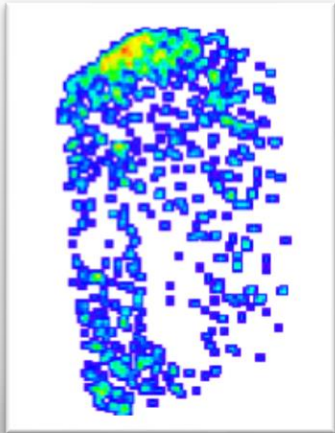


Theory

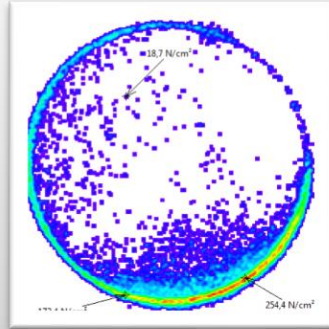
Biofidel
measuring system

▾ Data acquisition
& Evaluation

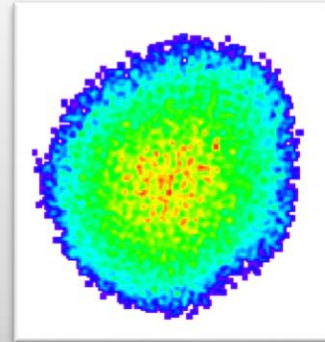
gripper



cylinder



sphere



Data acquisition



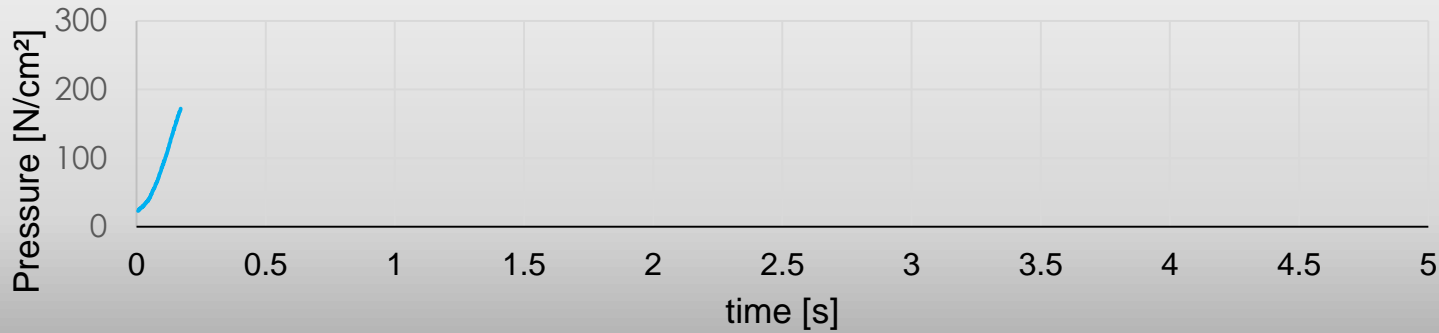
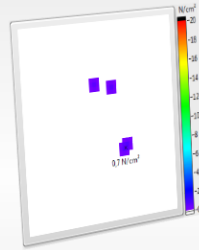
Theory

Biofidel
measuring system

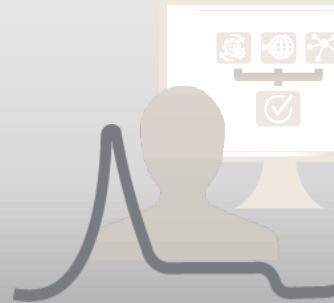
▾ Data acquisition
& Evaluation



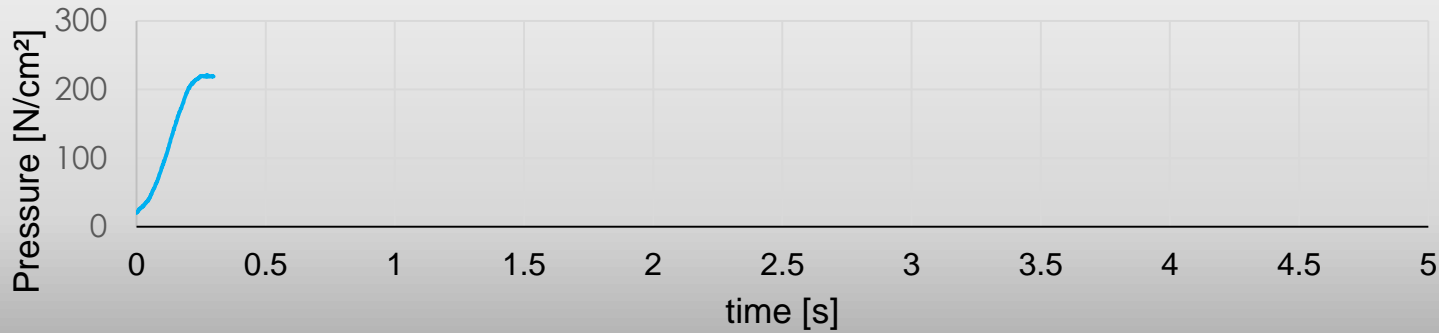
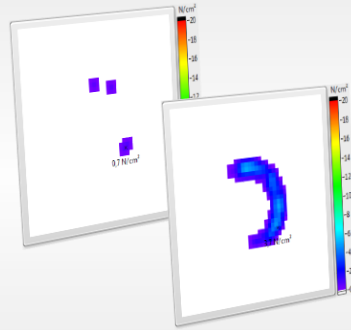
Evaluation – pressure



Data acquisition



Evaluation – pressure



Data acquisition

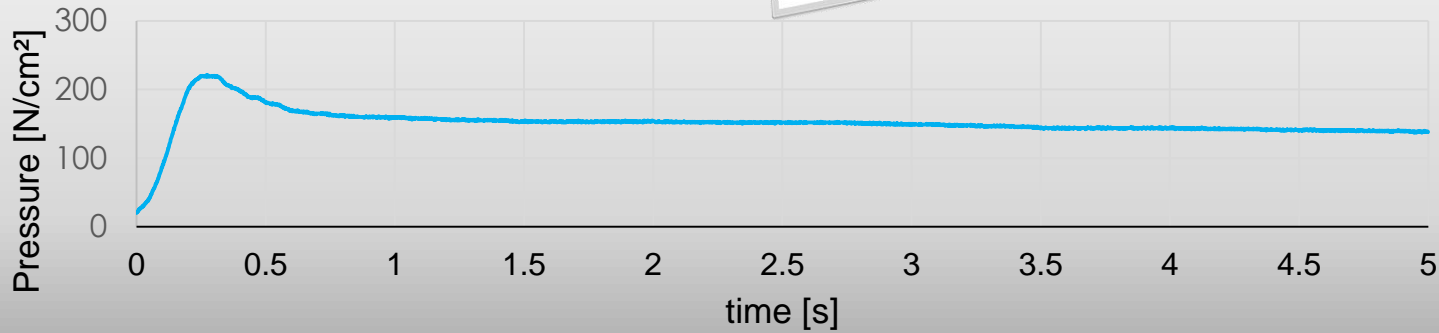
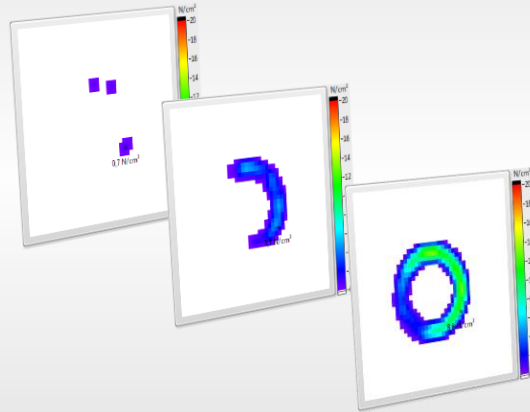
Theory

Biofidel
measuring system

▾ Data acquisition
& Evaluation



Evaluation – pressure



Data acquisition

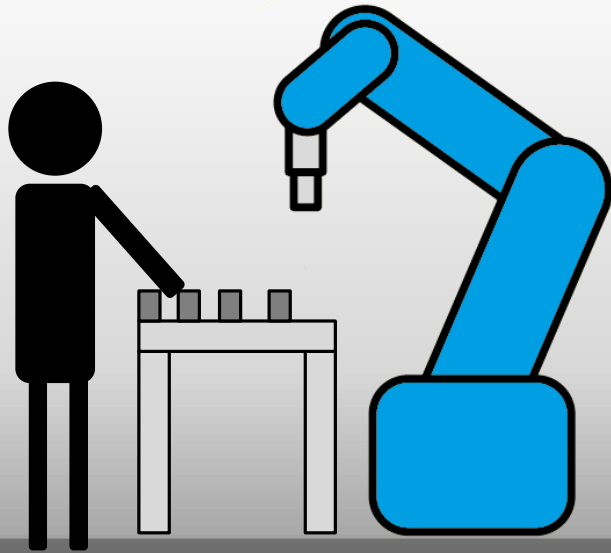
Which collision points within an HRC application needs to be measured?

- ▶ Theory
 - Biofidel measuring system
 - Data acquisition & Evaluation

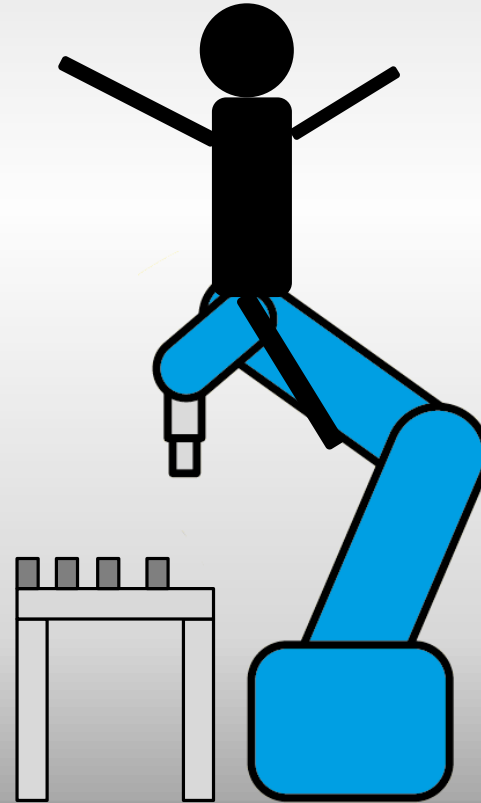
Realistic collision points!

Collision points

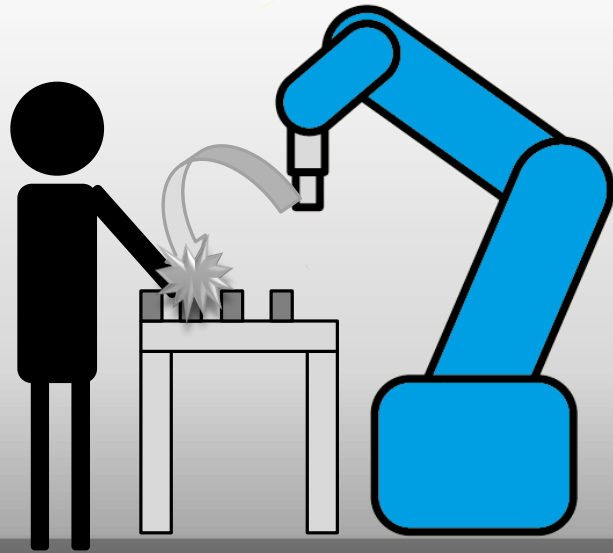
- ▶ Theory
- Biofidel
measuring system
- Data acquisition
& Evaluation



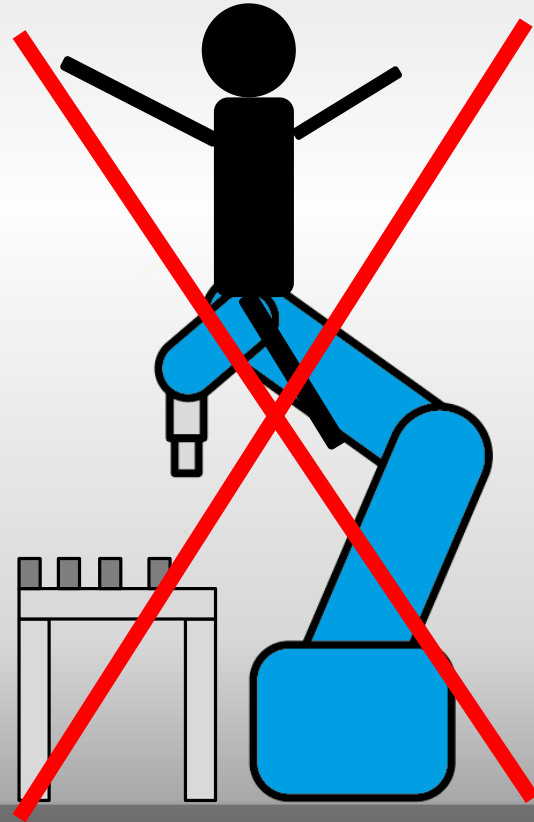
Theory



Collision points



Theory



► Theory

Biofidel
measuring system

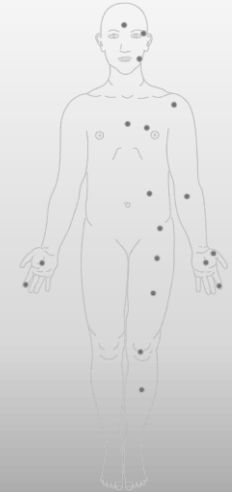
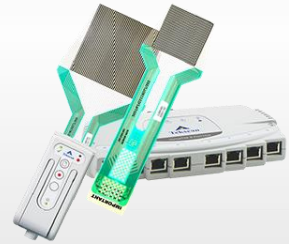
Data acquisition
& Evaluation

System

Theory

▶ Biofidel
measuring system

Data acquisition
& Evaluation



Measuring system

System

Theory

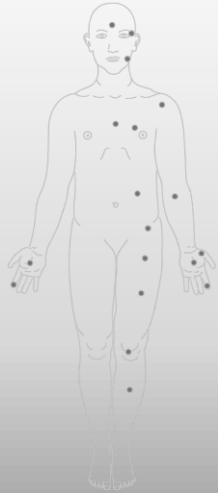
▶ Biofidel
measuring system

Data acquisition
& Evaluation

2016



2019



Measuring system

Theory

Biofidel
measuring system

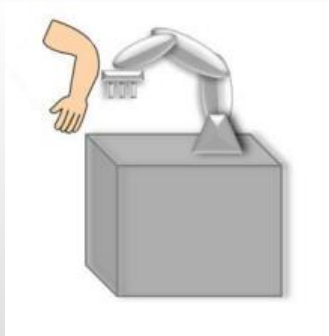
Data acquisition
& Evaluation

Thank you for your attention

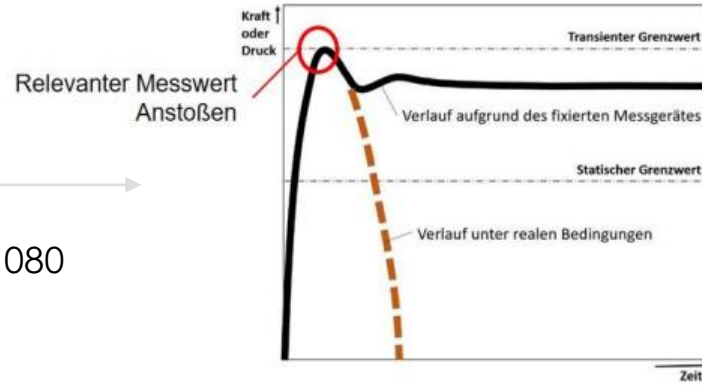
Theory

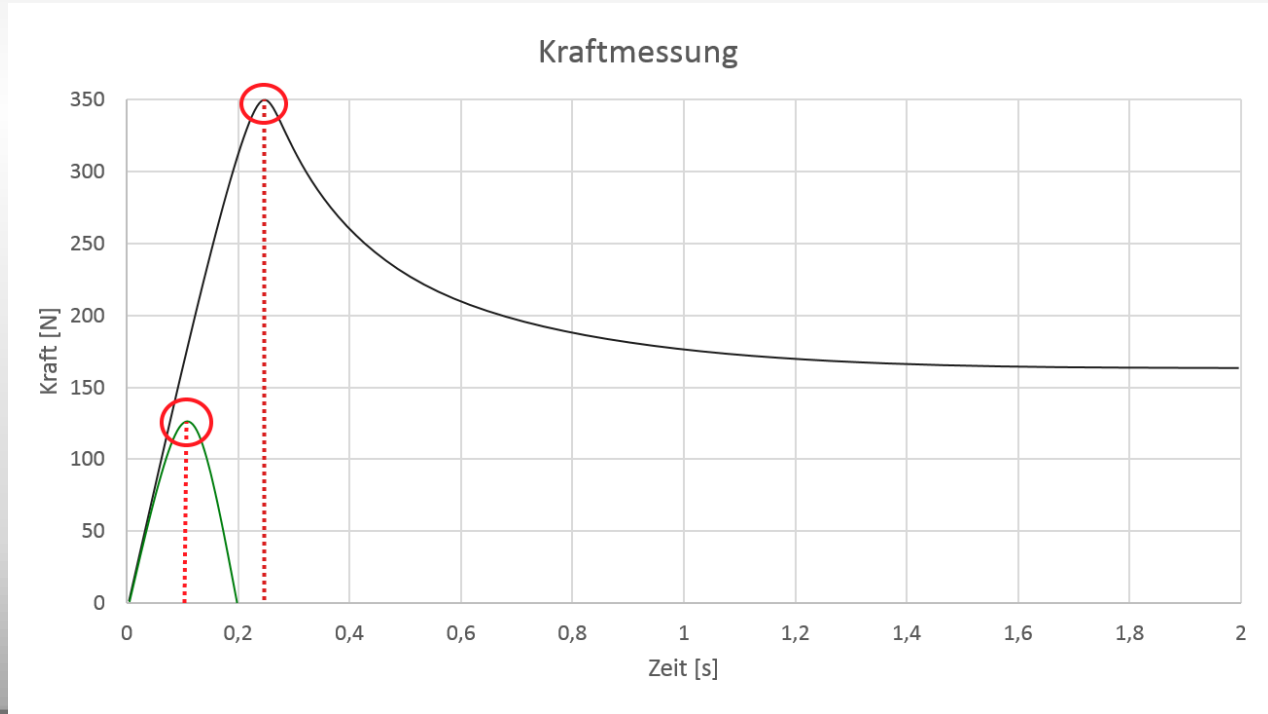
Biofidel
measuring system

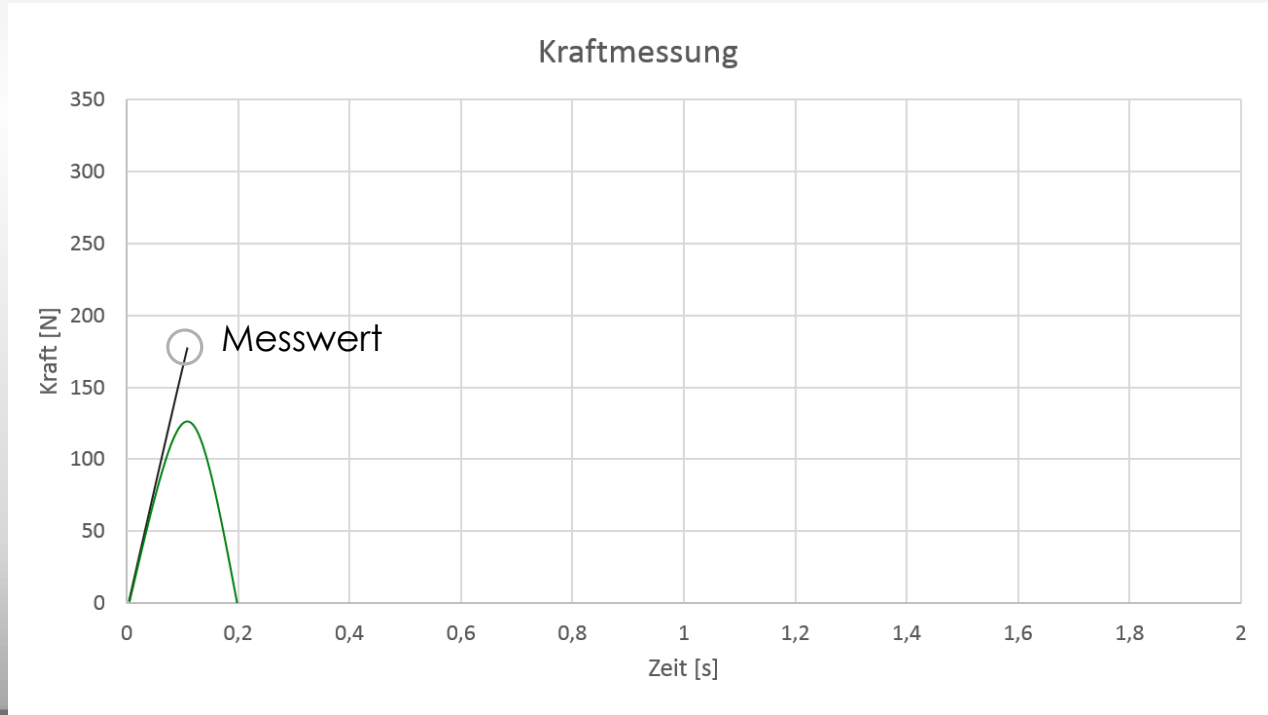
Data acquisition
& Evaluation



FB HM 080

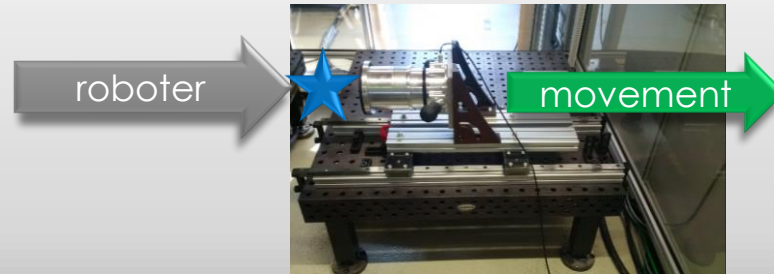
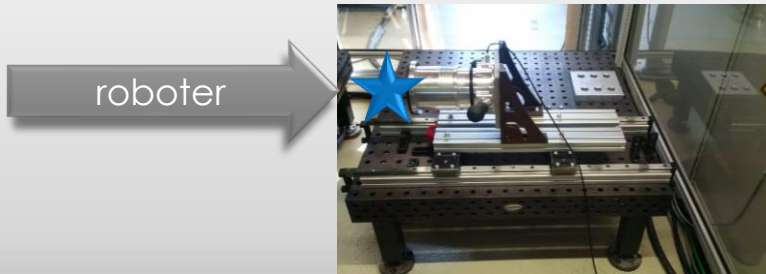






- Static measurement

- Free measurement

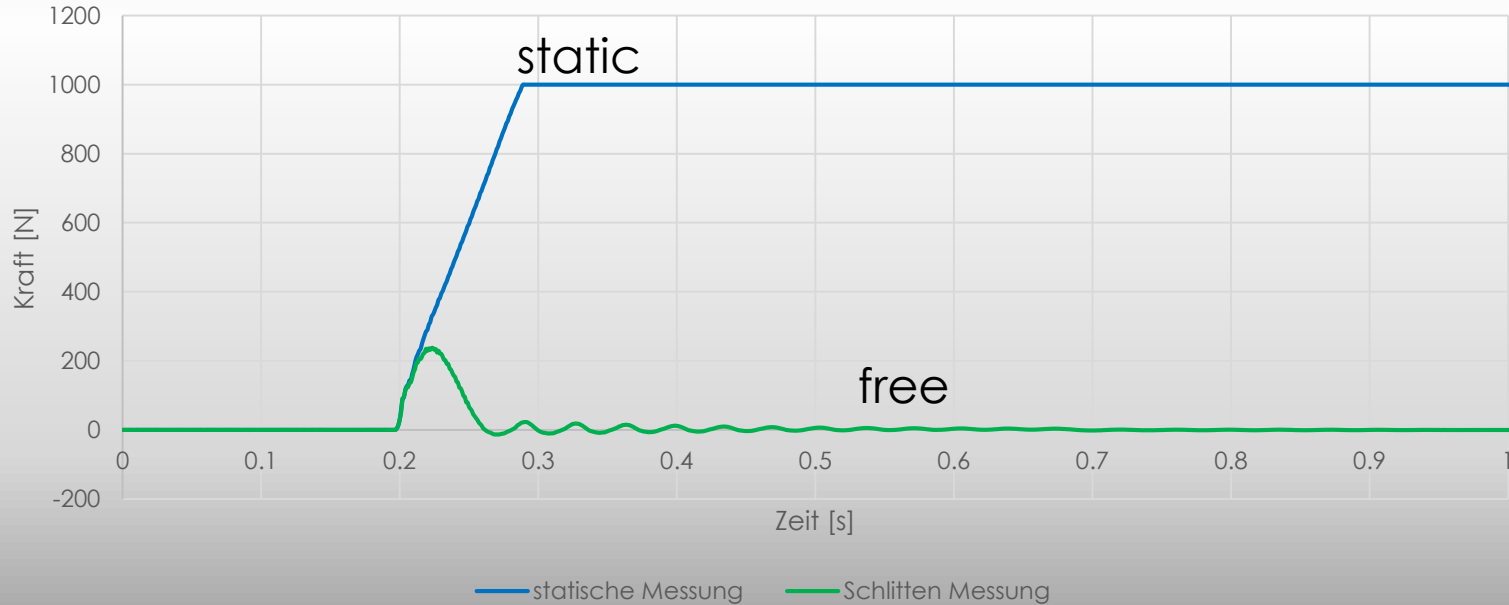


Theory

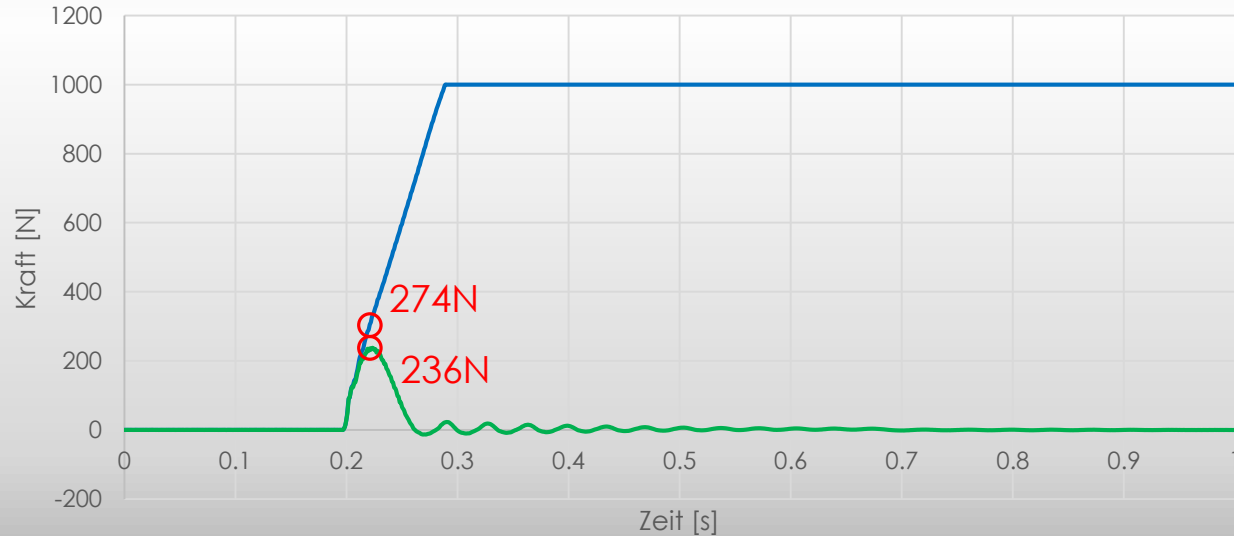
Biofidel
measuring system

Data acquisition
& Evaluation

Fanuc CR35iA Kollision



Fanuc CR35iA Kollision



— statische Messung — Schlitten Messung