

Smart Intersections and Ann Arbor Connected Environment 2.0 (AAACE)

Henry Liu

Director, Mcity

Director, Center for Connected & Automated Transportation

Professor, Civil and Environmental Engineering

University of Michigan, Ann Arbor

NIST On-Road Automated Vehicle Workshop

September 8th, 2023

Connected **Environment**

Paving the way for safer, greener, and smarter roads

Since 2012, the U-M Transportation Research Institute has served as a leader in connected vehicle research, creating a one-of-a-kind testing environment for all.



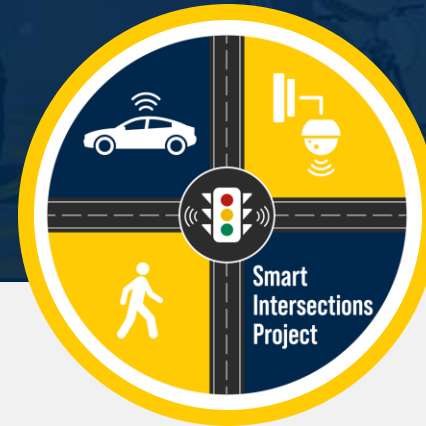
Safety Pilot
\$30.3M

Safety Pilot Model Deployment launched in August of 2012 as the world's first large-scale real-world deployment of CVs.



AACVTE
\$15.2M

The Ann Arbor Connected Vehicle Test Environment built upon SPMD to become the gold standard for a national deployment.



SIP
\$19.9M

The Smart Intersections Project will deploy infrastructure-based technology to accelerate CAV deployment and build a roadmap for its commercialization.

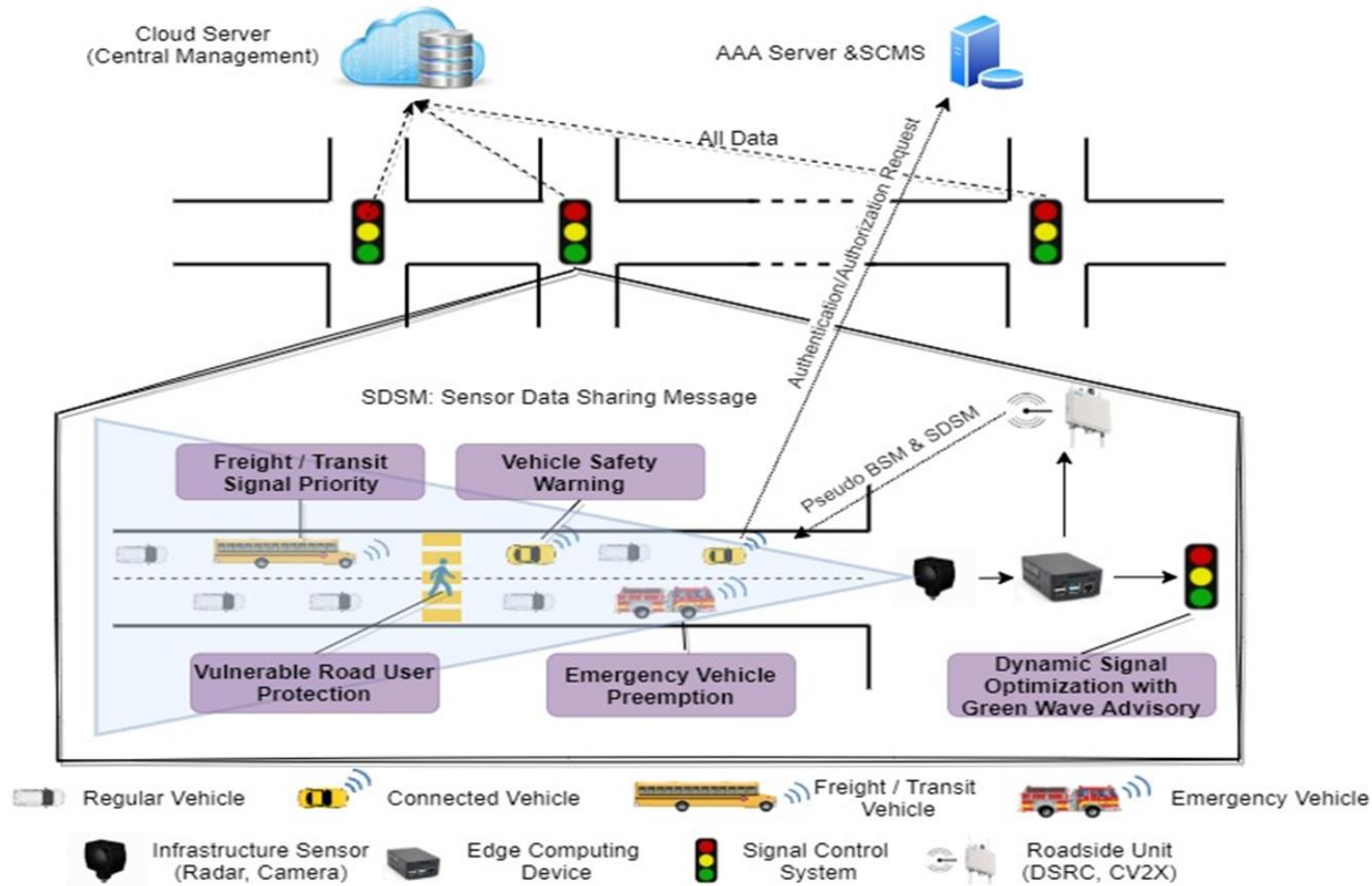


AAACE 2.0
\$12.7M

The Ann Arbor Connected Environment 2.0 will convert the existing connected vehicle deployment to C-V2X.

Smart Intersections Project

Develop an infrastructure-assisted cooperative driving automation *testbed* to accelerate CAV deployment



Qualcomm

TOYOTA



Continental

iteris

ECONOLITE

P3M

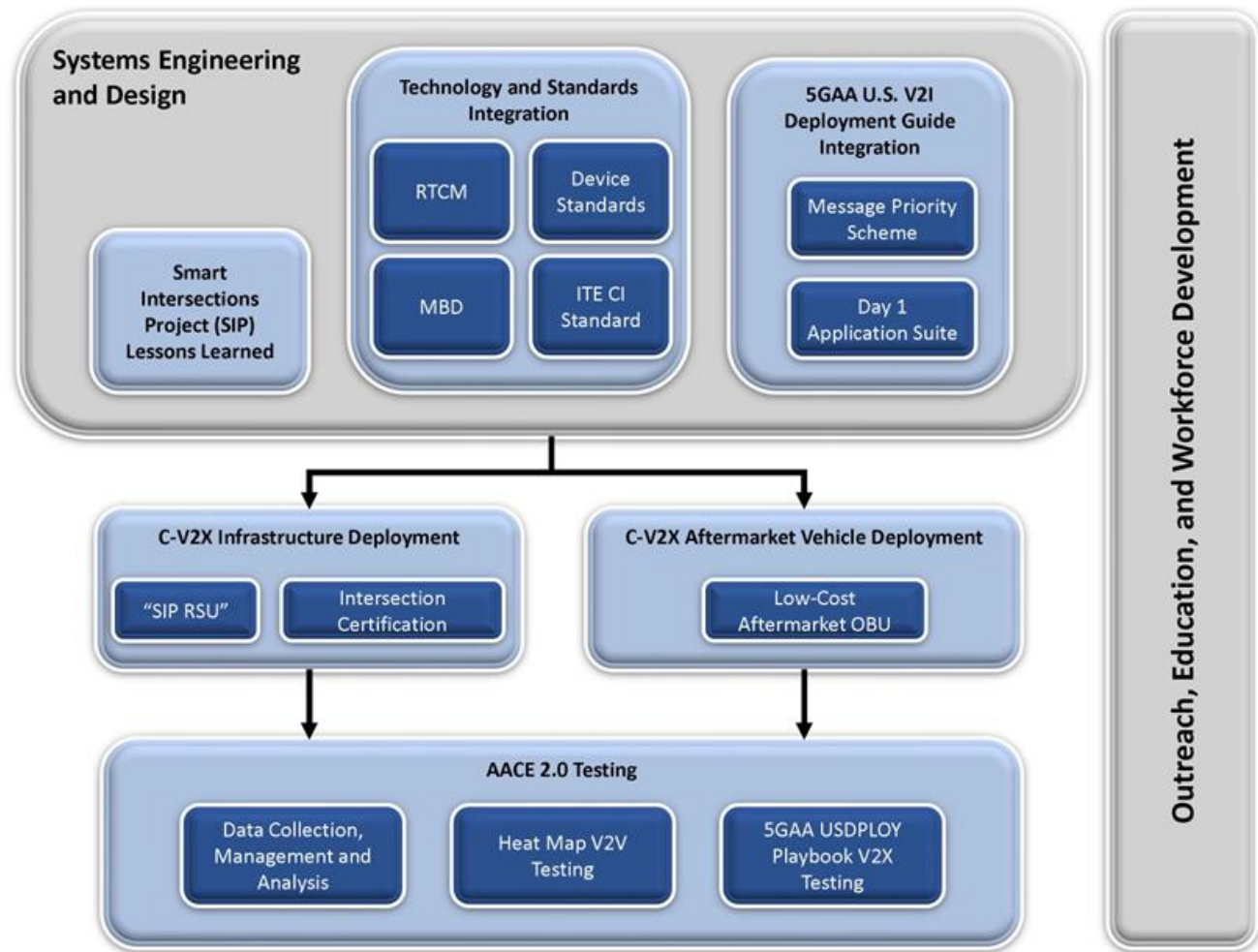
PURDUE UNIVERSITY

WSP

Funded by USDOT

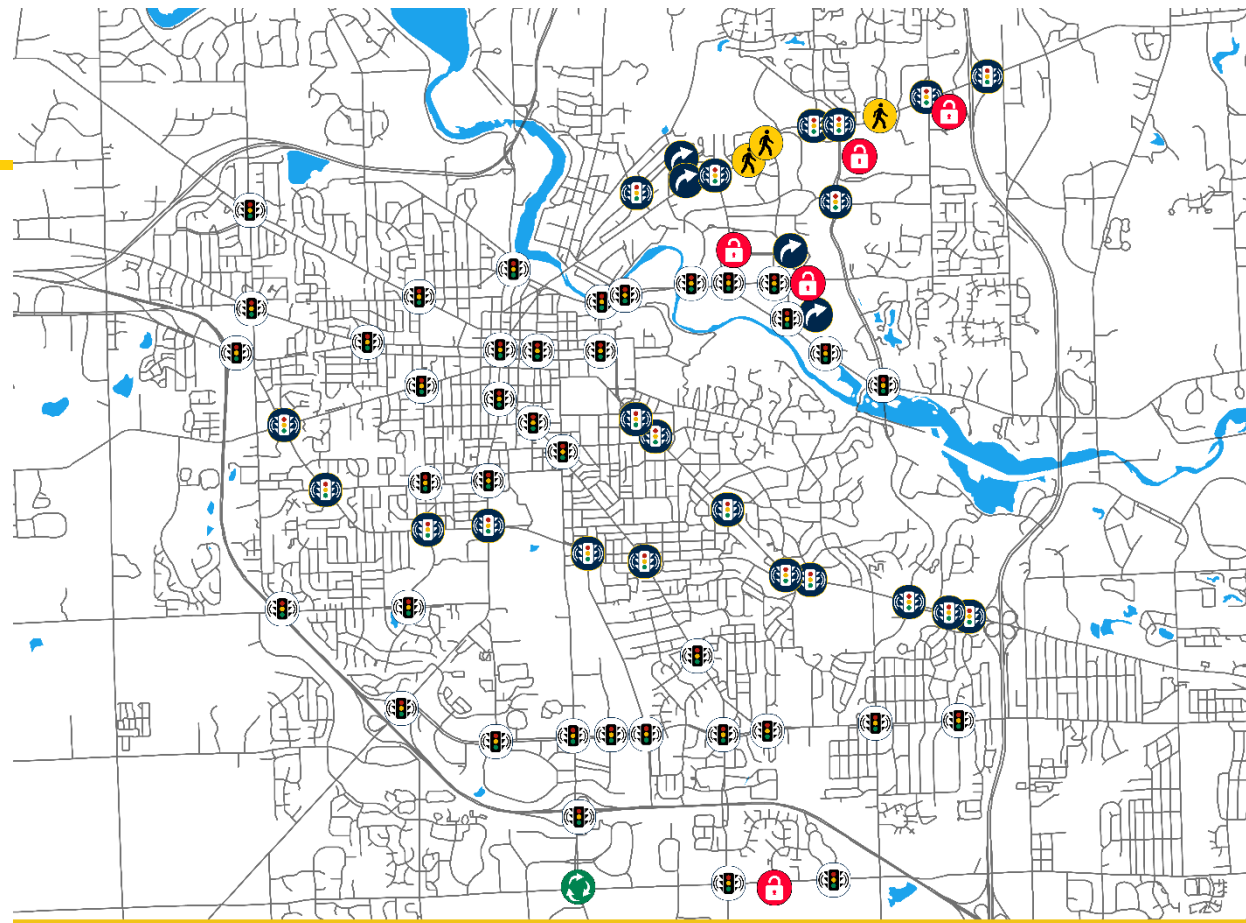
Ann Arbor Connected Environment 2.0

Support OEMs and Tier 1s to implement 5GAA Day-1 Applications for US V2I Deployment



Funded by USDOT

AACE 2.0 Deployment Sites



Smart Intersection Site



Intersection Site



Pedestrian Mid-Block Crosswalk



Testing Site without Security Enabled



Roundabout

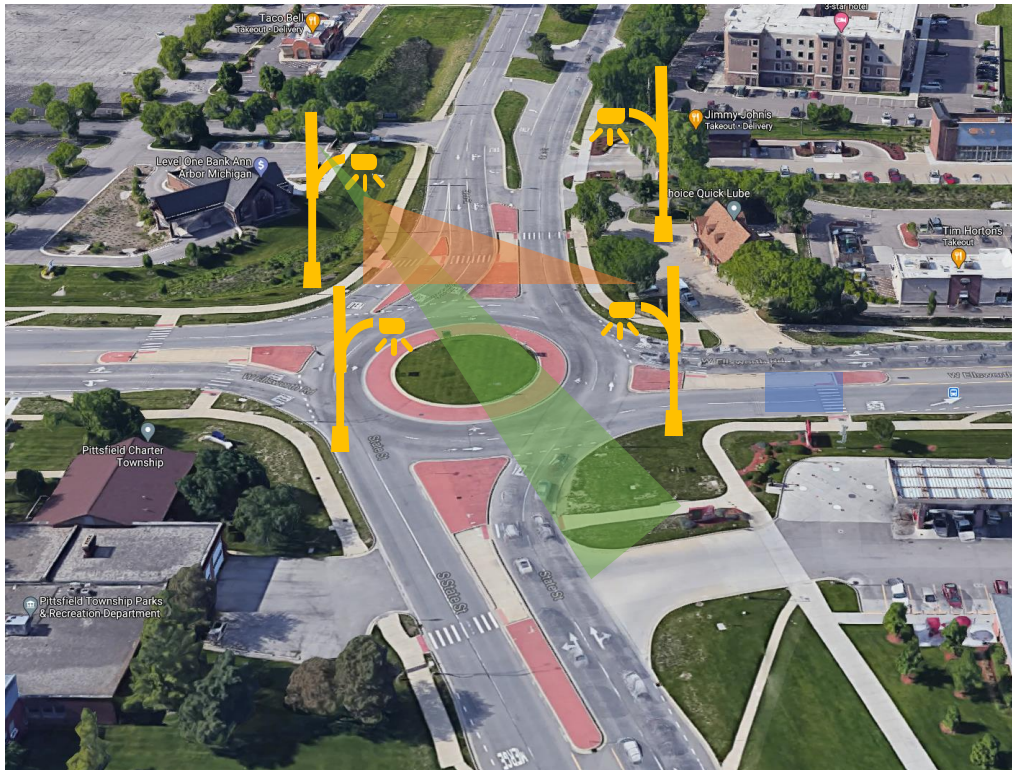


Curve Speed Warning



Implementation at State St./Ellsworth

- In 2020, State St./Ellsworth Rd roundabout had 69 crashes and 6 injuries and was ranked #14 for the most dangerous intersections in Michigan.



Long range sensors:
AccuScan radar sensors and
FLIR thermal image sensors

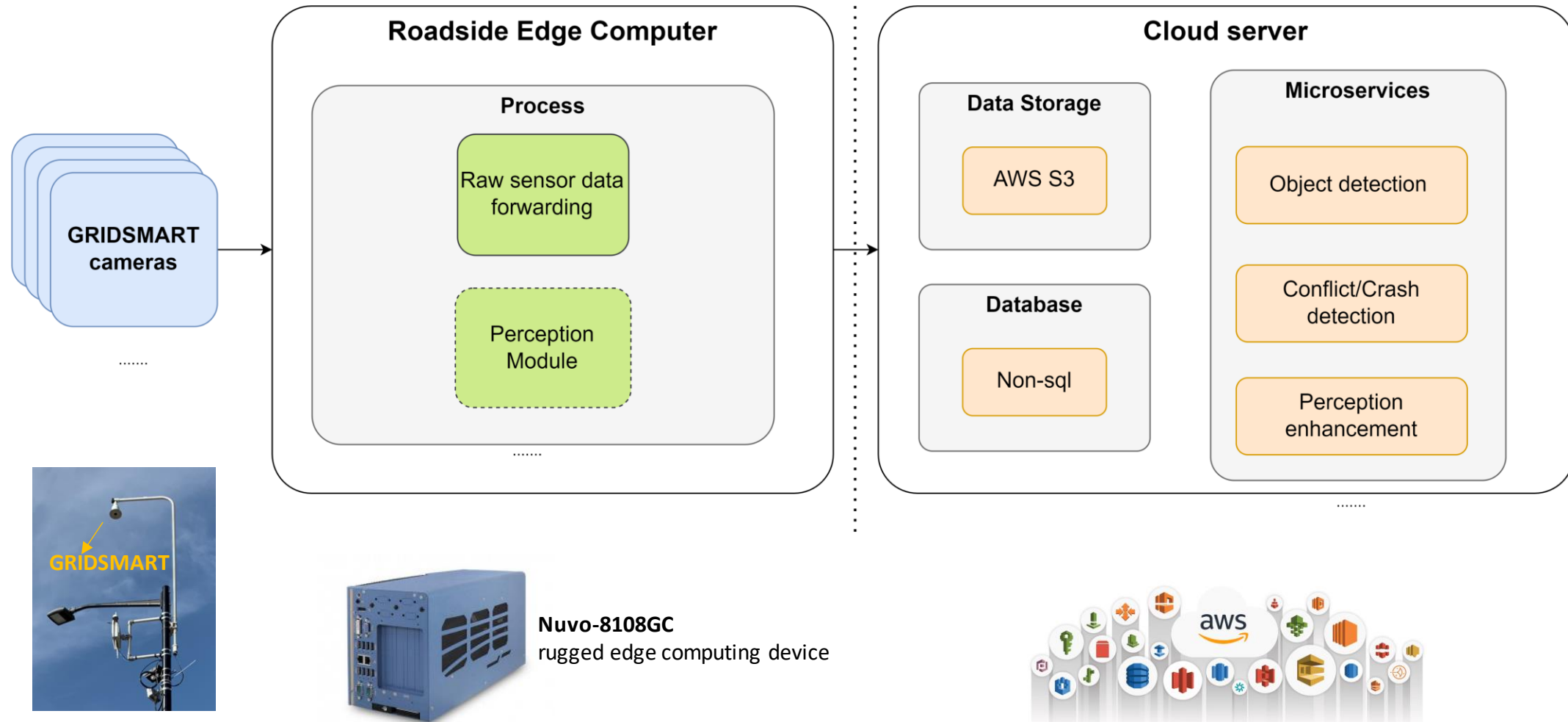
Short range sensors:
GRIDSMArt cameras

Streetlights with poles

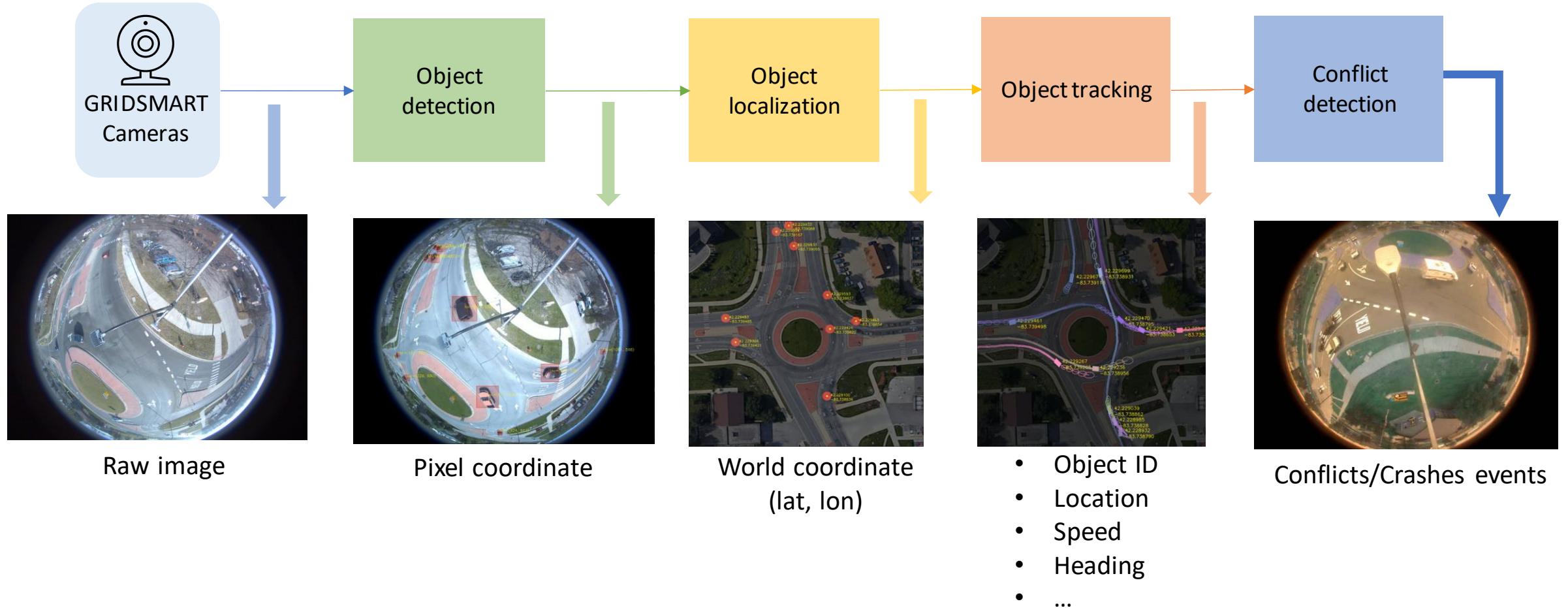
Signal Cabinet



Edge-cloud system architecture



MSight Conflict/Crash detection Overall Pipeline

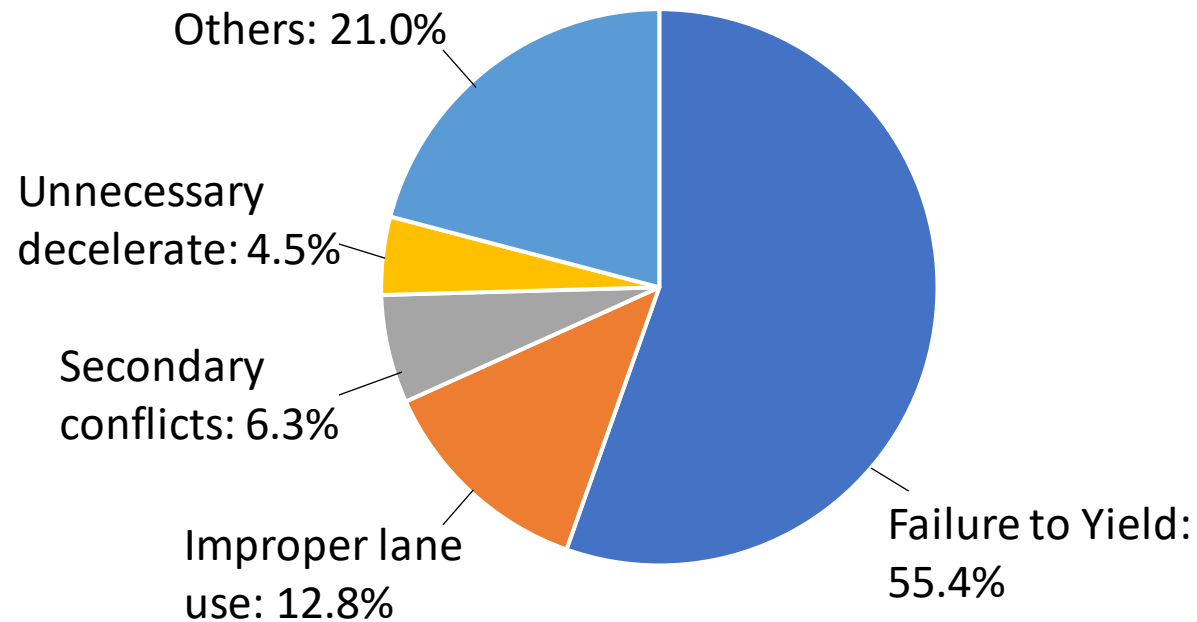


High-resolution trajectory data collection



Conflict statistics at State St./Ellsworth Rd Roundabout in Ann Arbor

- An infrastructure-based cooperative perception system is deployed at State St./Ellsworth Rd roundabout
- During 07/07/2023 – 08/07/2023:
- Statistics of 397 detected conflicts are shown as follows:



Statistics on reasons leading to conflicts



A conflict happened at 1:30pm, July 10th, 2023



LEADING THE TRANSFORMATION
TO CONNECTED &
AUTOMATED VEHICLES