

**Federal Building and Fire Safety Investigation
of the World Trade Center Disaster**

Simulation of the Fires in WTC 1, 2 and 7

June 22, 2004

Kevin McGrattan, Ph.D.
Mathematician

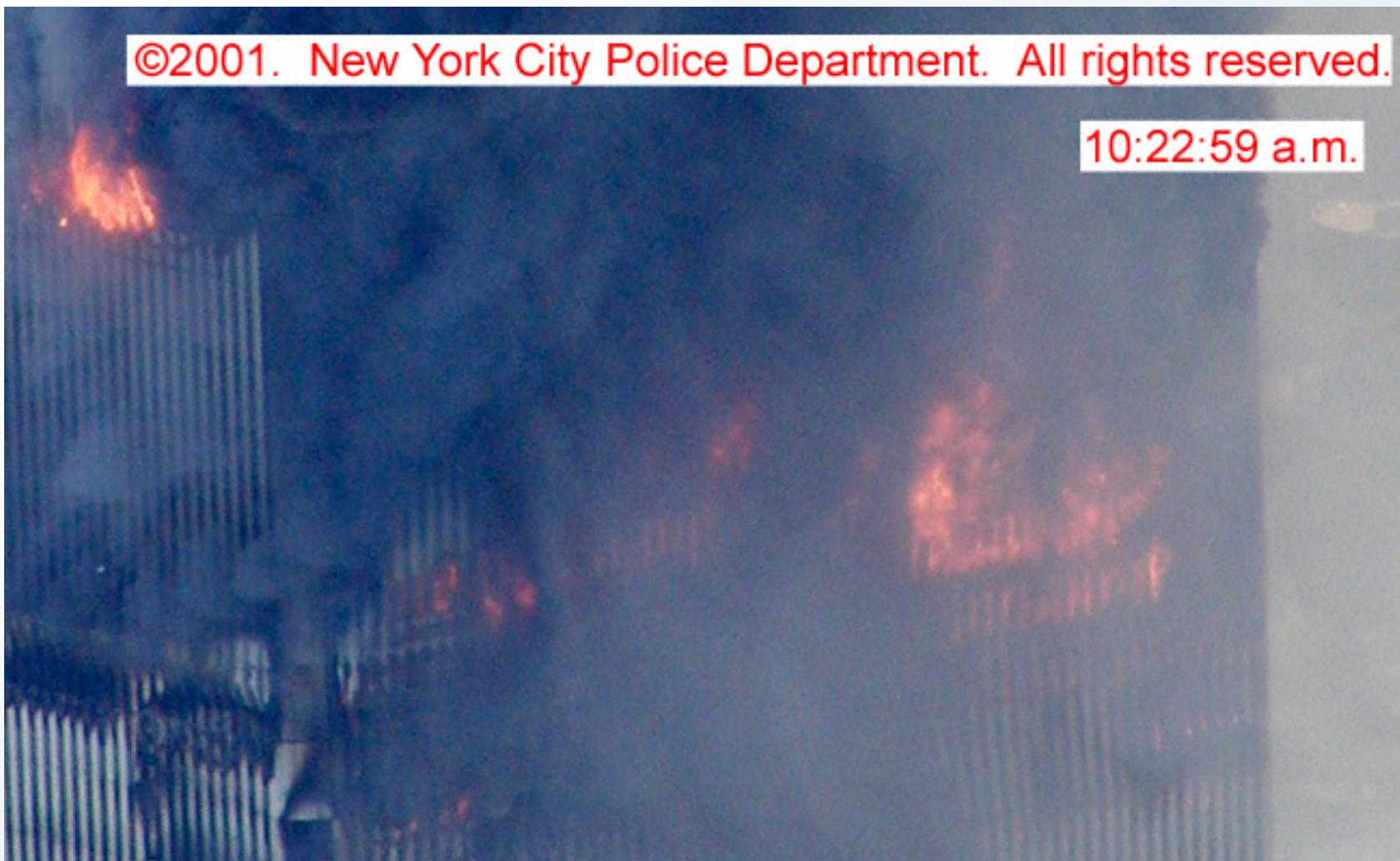
**Building and Fire Research Laboratory
National Institute of Standards and Technology
U.S. Department of Commerce
kevin.mcgrattan@nist.gov**

Overview

- Development and validation of the Fire Dynamics Simulator for use in the WTC investigation is complete
- Numerical simulations of fires in WTC 1, 2 and 7 on-going using the latest information provided by the airplane impact and photo analysis teams
- A set of “standard fires” has been developed to bound possible outcomes of the calculations

©2001. New York City Police Department. All rights reserved.

10:22:59 a.m.

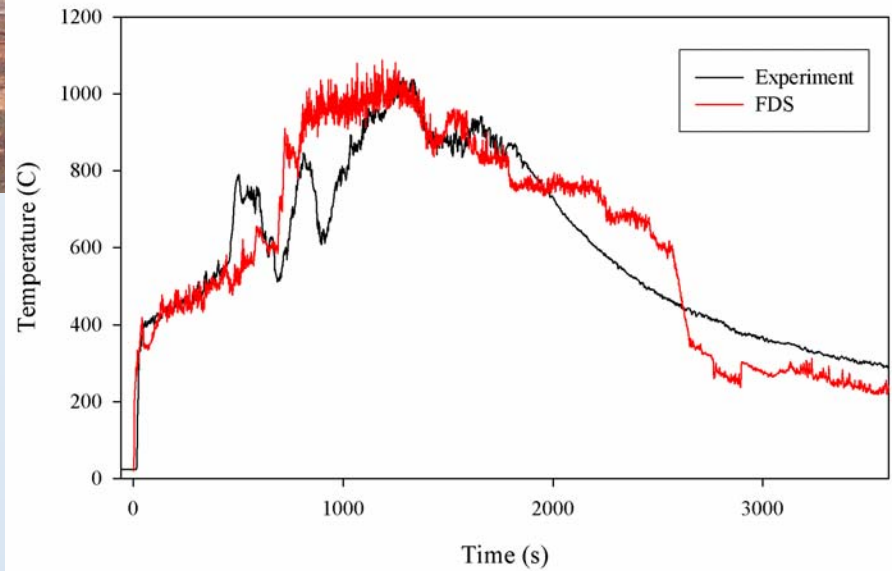


Goal: numerically simulate the fires within WTC 1, 2 and 7 so that the uncertainty in the calculations is less than the uncertainty in the initial and boundary conditions.

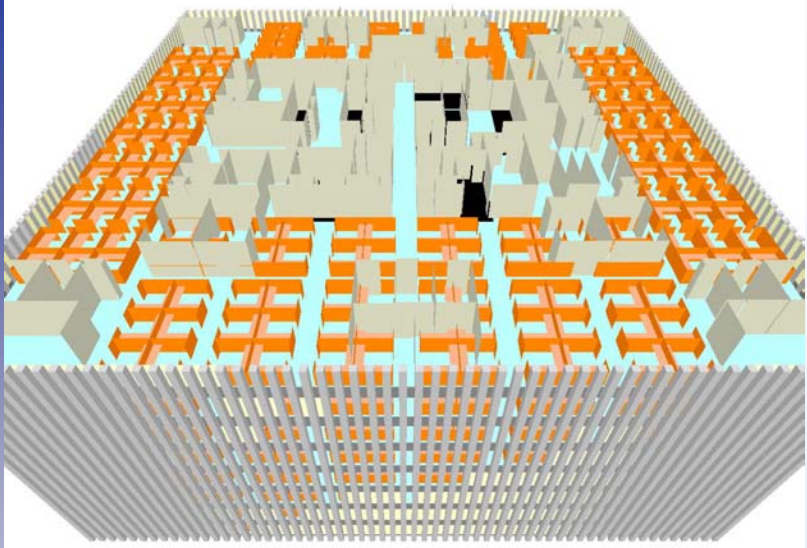


Phase 2 Experiment 3 Workstation Fire

FDS Prediction of Compartment Temperature

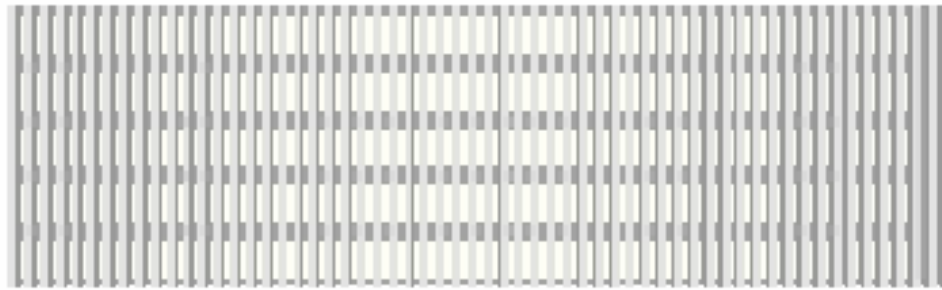


Layout of typical floor, WTC 1



NIST

Walk-through of 94th floor, WTC 1 (animation)

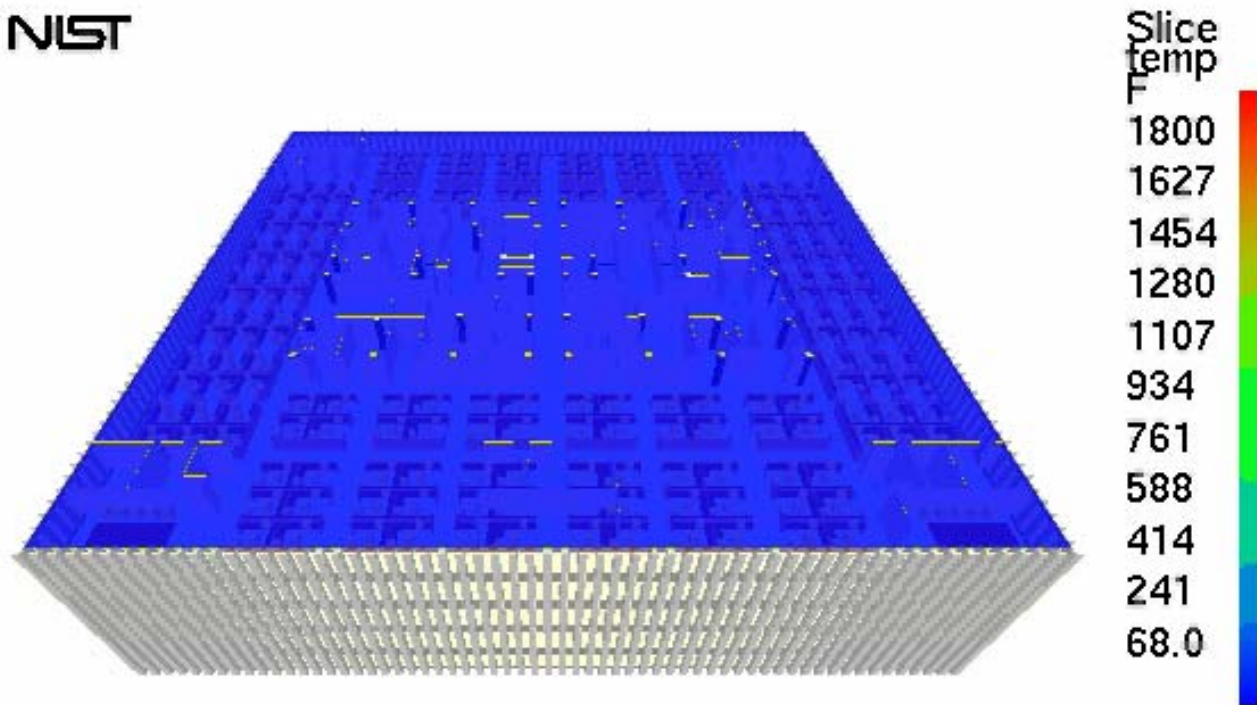


Model Inputs

- Initial Conditions:
 - Damage to building exterior/interior
 - Jet fuel distribution
 - Combustible load (furniture mass per unit area)
- Boundary Conditions:
 - Window breakage
 - Wind
 - Thermal properties of furnishings

Upper Layer Temperatures, WTC 1, Floor 97

NIST

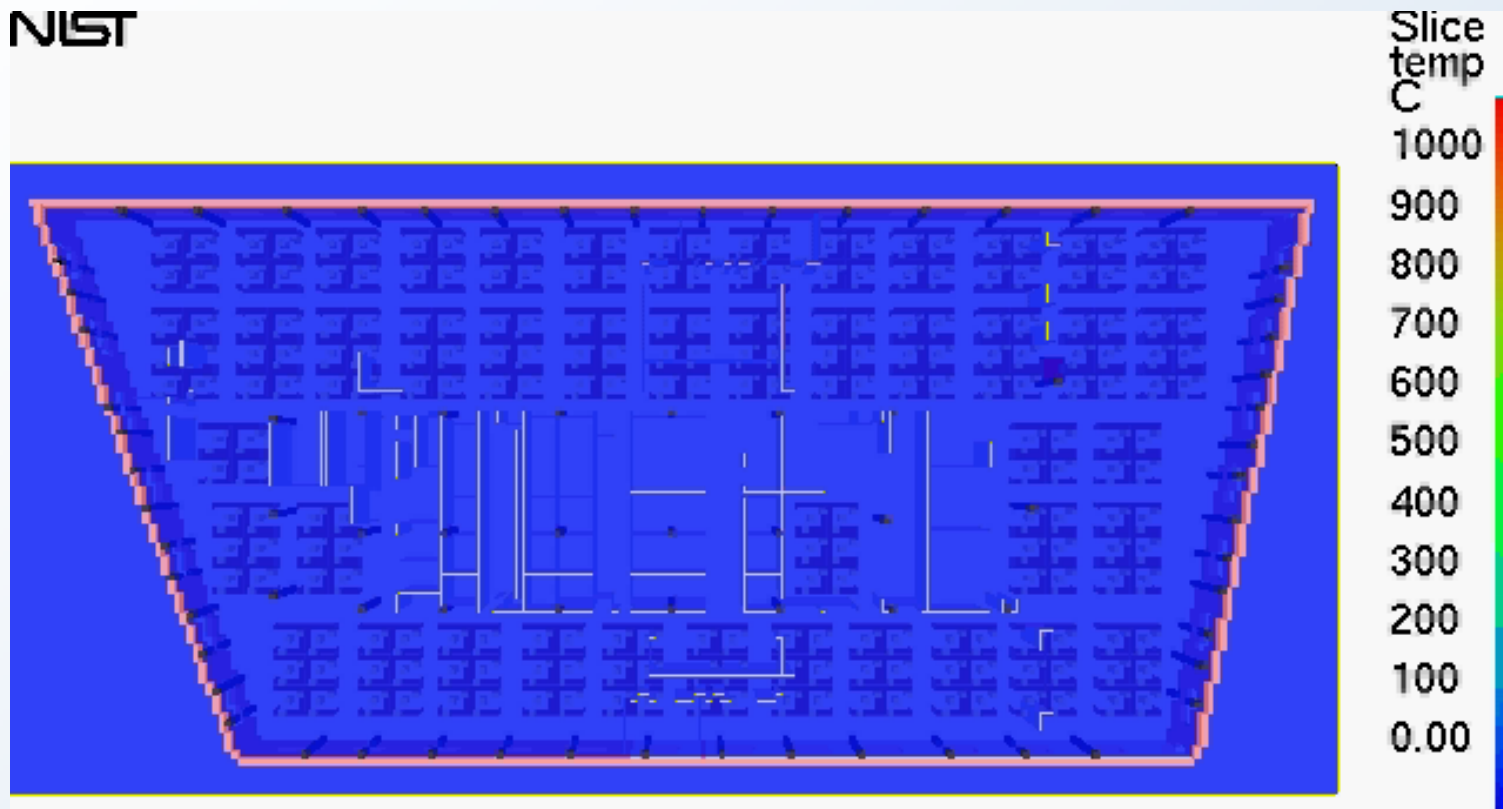


0:00:00.0

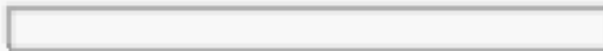


Upper Layer Temperatures, WTC 7, Floor 8

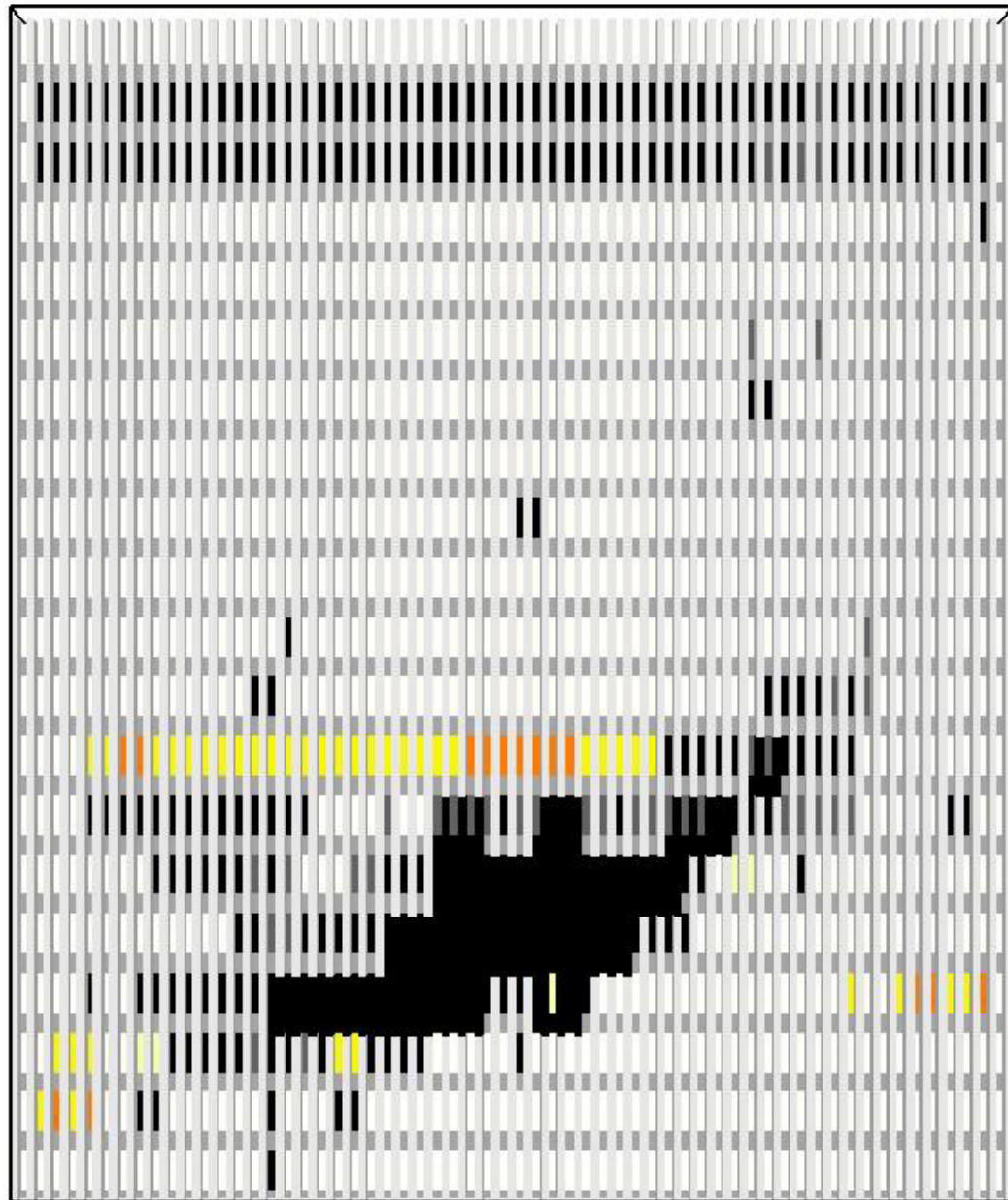
NIST



0:00:00.0

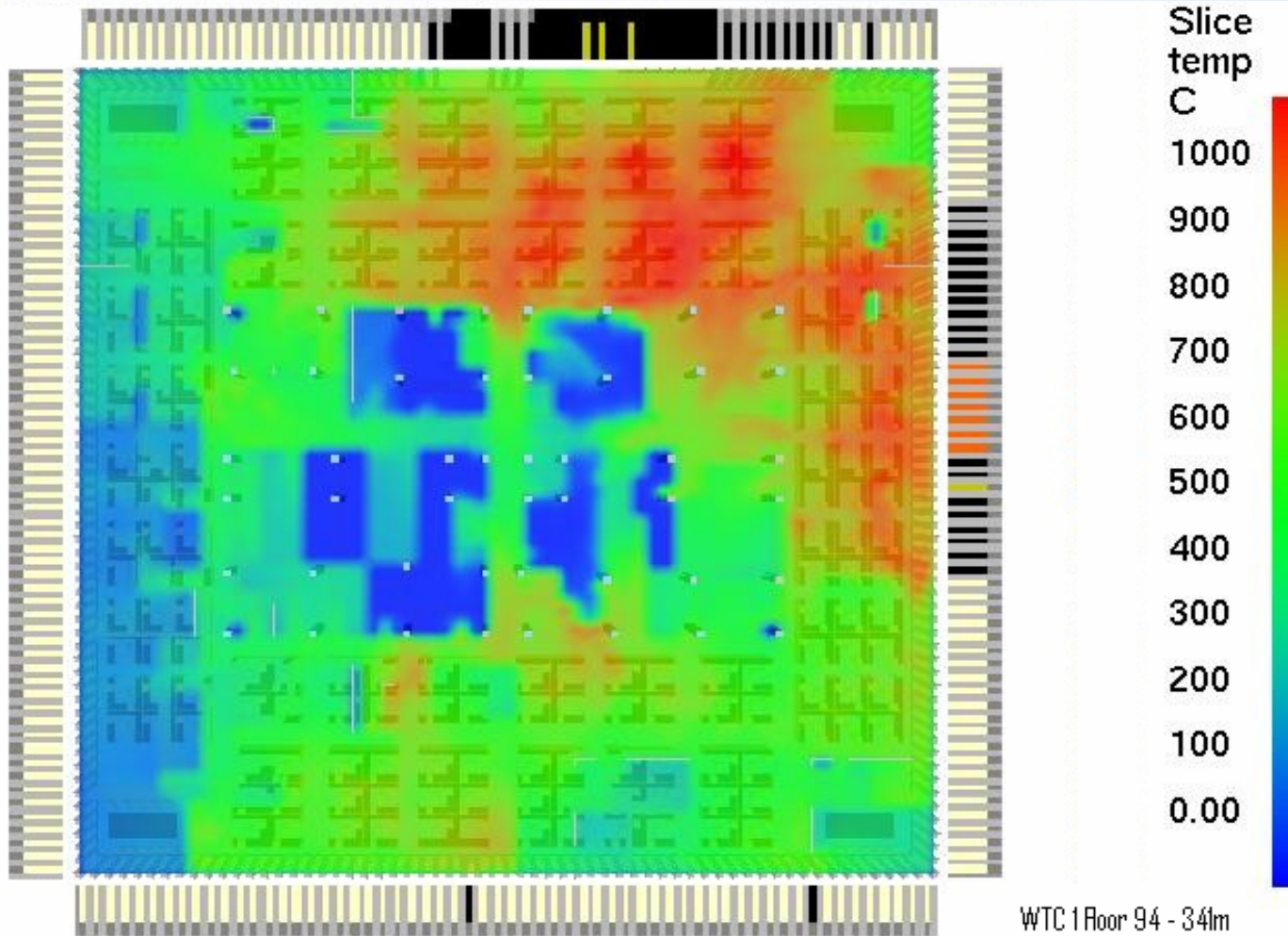


Summary of Fire Activity WTC 1 North Face



WTC 1, Floor 94, 10 min after impact

NIST

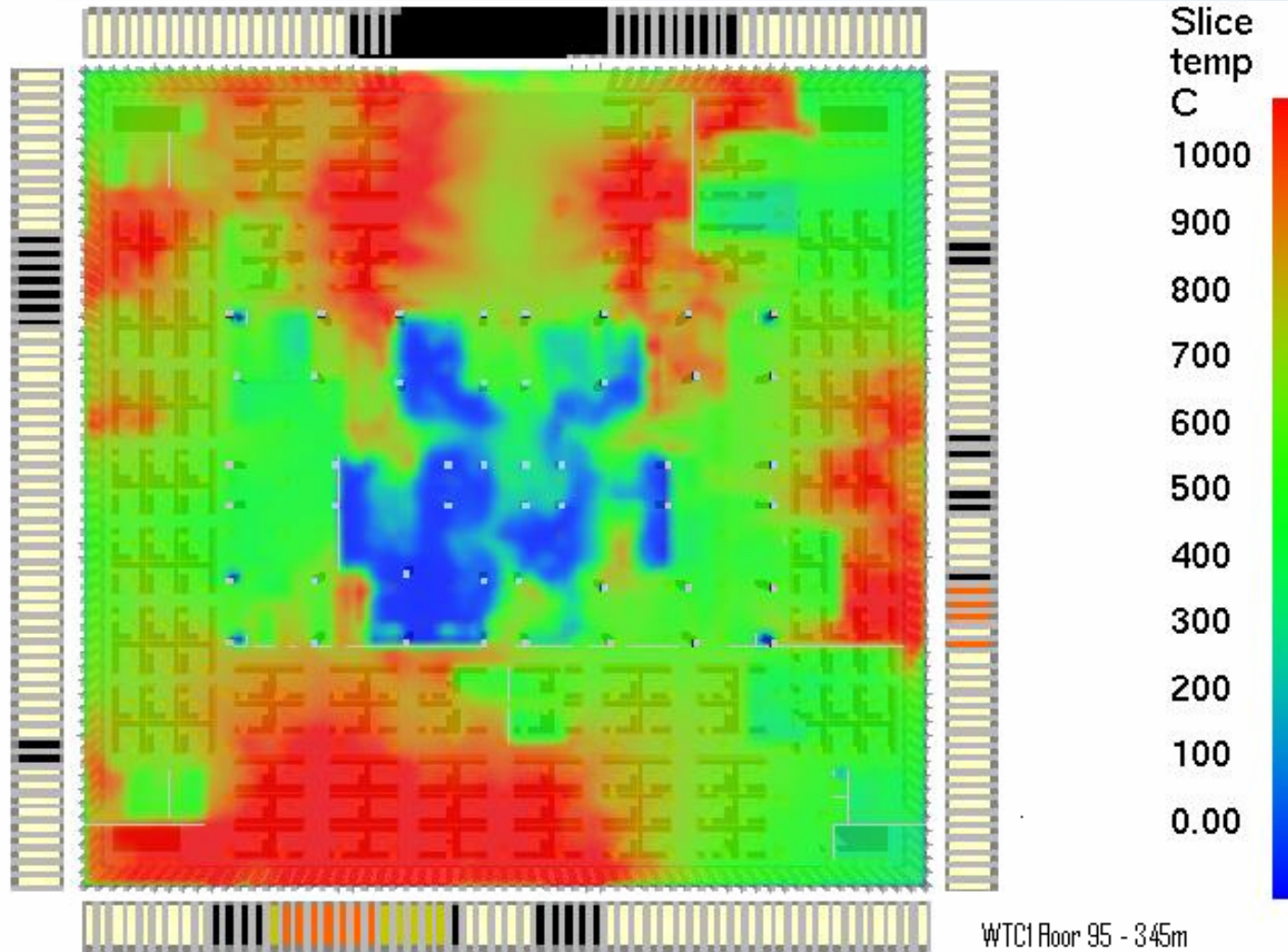


0:10:00.0

NIST

WTC 1, Floor 95, 40 min after impact

NIST

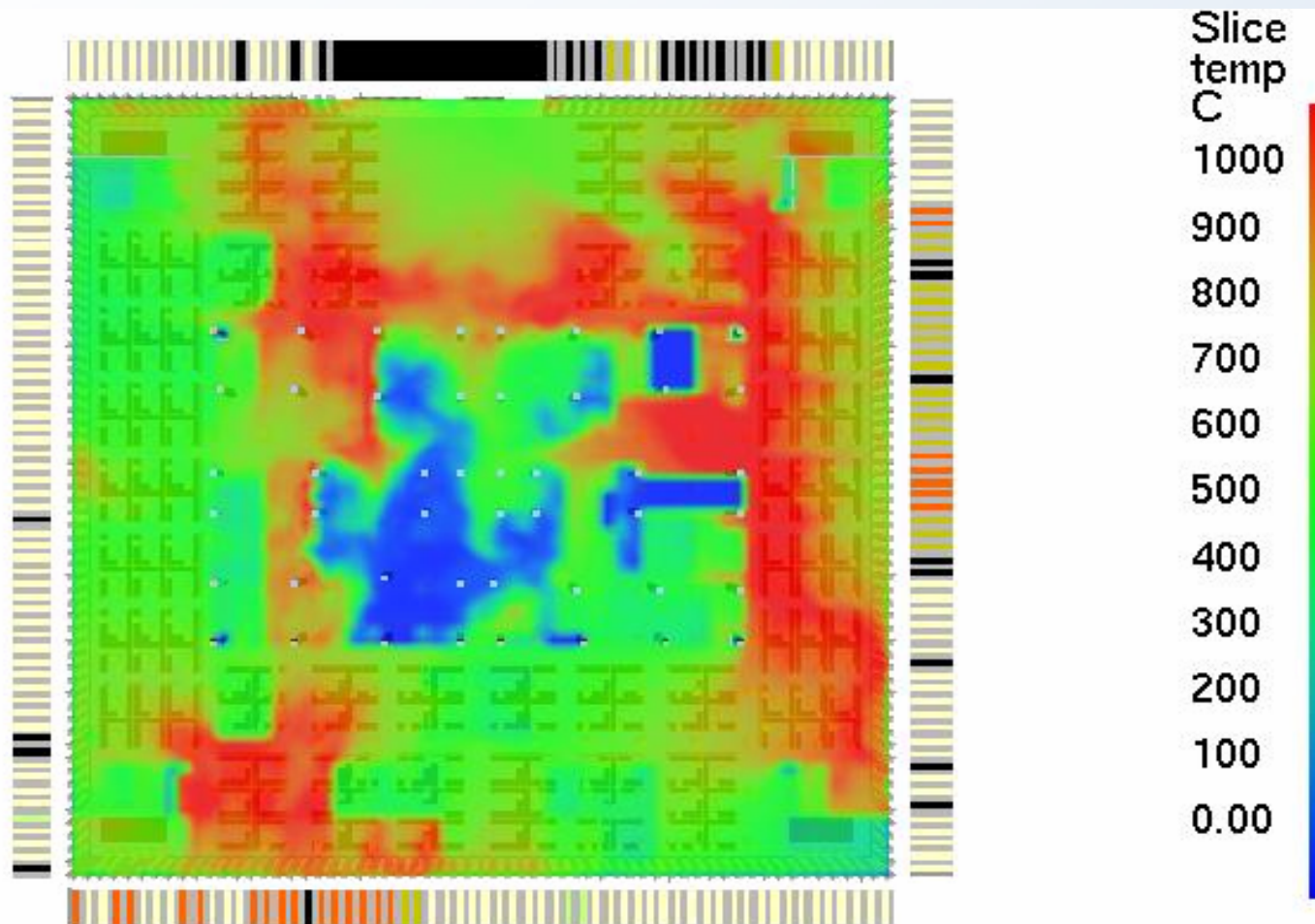


0:40:00.0

NIST

WTC 1, Floor 96, 30 min after impact

NIST



WTC 1 Floor 96 - 348m

0:30:00.0



NIST

Maximum Credible Fire – Undamaged Tower

- Sprinkler system is compromised, overwhelmed, or not present
- No active firefighting
- Combustible building contents averaging 10 lb/ft²
- Floor-to-floor fire spread to next upper floor at 30 or 60 min
- Ventilation from windows broken by fire and a total of 50 ft² of air leakage between floors

“Standard” Fires

- Towers
 - Exterior wall: maximum observed duration
 - Exterior wall: maximum observed expanse
 - High threat to a building corner
 - Full floor: relatively undamaged floor (e.g., WTC1-98)
 - Full floor: damage to the tenant space and the core (e.g., 96)
 - E-119 time-temperature curve (spatially uniform)
- WTC 7
 - Mechanical space (floors 5-6): largest possible 3 h fire
 - Tenant space (floors 7+): high combustibles load

Summary

- FDS has been “frozen” and the documentation is in review
- Numerical simulations of fires within WTC 1, 2 and 7 have been performed with a variety of initial and boundary conditions to assess sensitivity of results
- A set of “standard” fires has been defined to bound possible outcomes
- Simulations will be re-run using results of airplane impact study

**Federal Building and Fire Safety Investigation
of the World Trade Center Disaster**

Simulation of the Fires in WTC 1, 2 and 7

Thank you

Kevin McGrattan, Ph.D.
Mathematician
kevin.mcgrattan@nist.gov