

Appendix A

NTEP Statistics Report

General NTEP Statistics		Last Year	This Year	Grand Total
		10/01/12 – 9/30/13	10/01/13 – 6/30/14	10/1/00 – 6/30/14
Total Applications Processed		(8) 255	(32) 251	(184) 3538
Applications Completed		252	230	3436
New Certificates Issued		253	214	3062
Active NTEP Certificates on 6/30		1977	1887	

() = Reactivations

Assignments to Labs per Year		10/1/12 – 9/30/13	10/1/13 – 6/30/14	10/1/00 – 6/30/14
California		(1) 38	29	(17) 475
Canada		2	1	(4) 46
GIPSA-DC		1	0	17
GIPSA-KC		9	6	102
Maryland		(7) 50	(2) 35	(46) 453
New York		(2) 10	7	(19) 180
NIST Force Group		4	4	(1) 96
North Carolina		8	20	(4) 140
Ohio		62	37	(28) 876
NTEP Staff		(2) 70	109	(12) 1019
Applications Not Yet Assigned to a Lab			6	

() = Reassignments from another lab

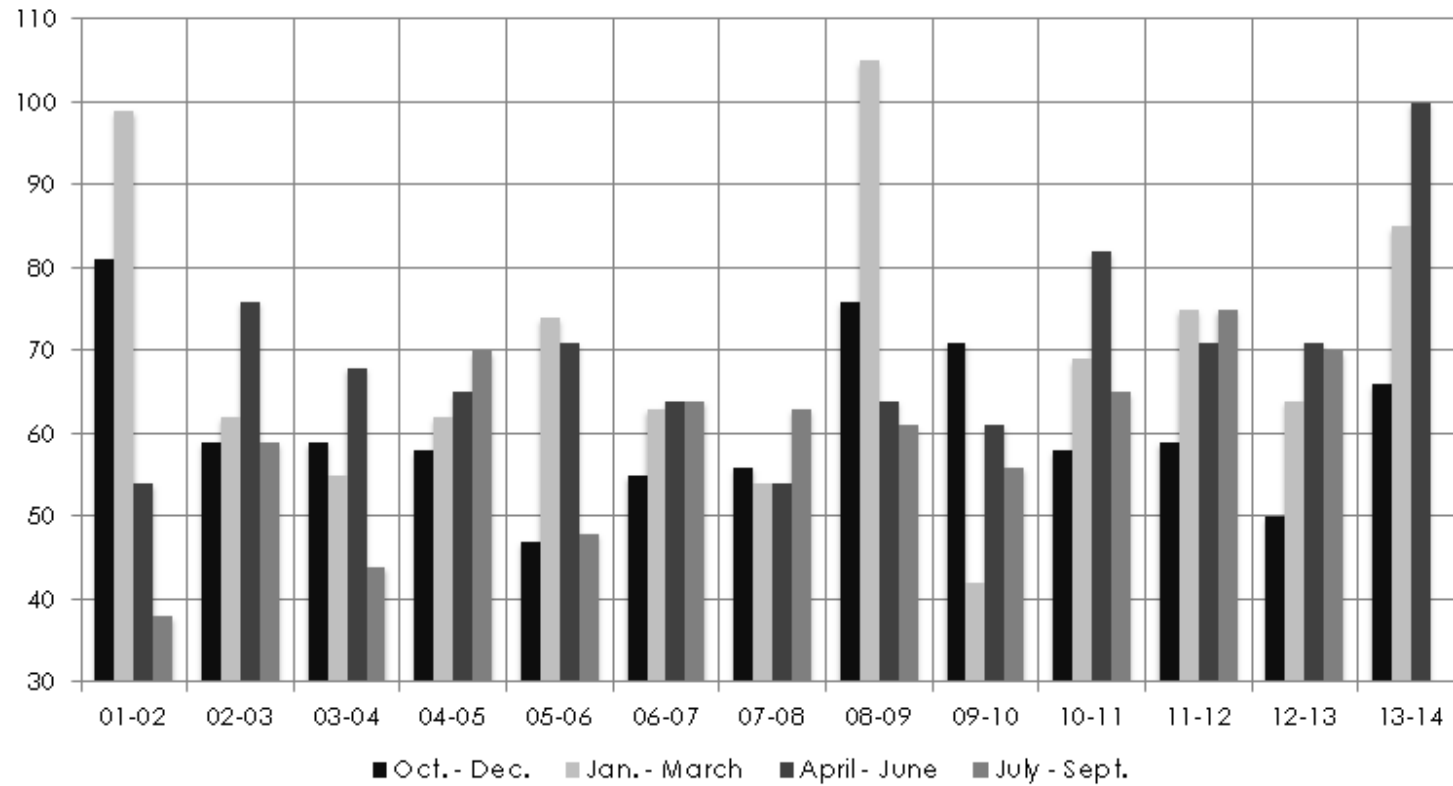
Process Statistics	2013 - 2014	2000 - 2014
Average Time to Assign an Evaluation	3.8 Days	8.6 Days
Average Time to Complete an Evaluation		131.2 Days

Report on Evaluations in Progress

Evaluations in Progress	0-3 Months	3-6 Months	6-9 Months	9-12 Months	Over 1 Year	Total
June 30, 2010	37	12	11	13	24	97
October 30, 2010	40	30	8	8	20	106
December 31, 2010	39	25	22	5	20	111
March 31, 2011	37	27	13	19	17	107
June 30, 2011	47	20	7	7	21	102
September 30, 2011	42	28	11	5	19	105
December 31, 2011	37	19	23	5	17	101
March 31, 2012	40	17	7	21	14	99
June 30, 2012	41	21	10	6	20	98
September 30, 2012	50	30	15	7	19	121
December 31, 2012	32	24	17	7	18	98
March 31, 2012	36	12	14	12	18	92
June 30, 2013	53	18	6	6	19	102
September 30, 2013	44	32	5	4	21	106
December 31, 2013	41	25	24	2	24	116
March 31, 2014	53	23	13	17	11	117
June 30, 2014	55	30	14	8	19	126

In Progress by Lab	0-3 Months	3-6 Months	6-9 Months	9-12 Months	Over 1 Year	Total
California	7	6	5	0	7	25
Canada	0	1	0	0	0	1
GIPSA-DC	0	0	0	0	1	1
GIPSA-KC	4	2	0	1	1	8
Maryland	6	5	3	1	1	16
New York	1	1	1	0	0	3
NIST Force Group	1	0	2	2	2	7
North Carolina	6	8	2	1	1	18
Ohio	9	2	1	3	6	21
NTEP Staff	16	4	0	0	0	20
Unassigned	5	1	0	0	0	6
					Total Pending:	126

Report on Applications Received by Quarter



	01-02	02-03	03-04	04-05	05-06	06-07	07-08	08-09	09-10	10-11	11-12	12-13	13-14
Oct - Dec	81	59	59	58	47	55	56	76	71	58	59	50	66
Jan - Mar	99	62	55	62	74	63	54	105	42	69	75	64	85
Apr - Jun	54	76	68	65	71	64	54	64	61	82	71	71	100
Jul - Sep	38	59	44	70	48	64	63	61	56	65	75	70	
Total	272	256	226	255	240	246	227	306	230	274	280	255	251

Average Per Quarter Overall: 65.1

Average Per Quarter This FY: 83.7

THIS PAGE INTENTIONALLY LEFT BLANK