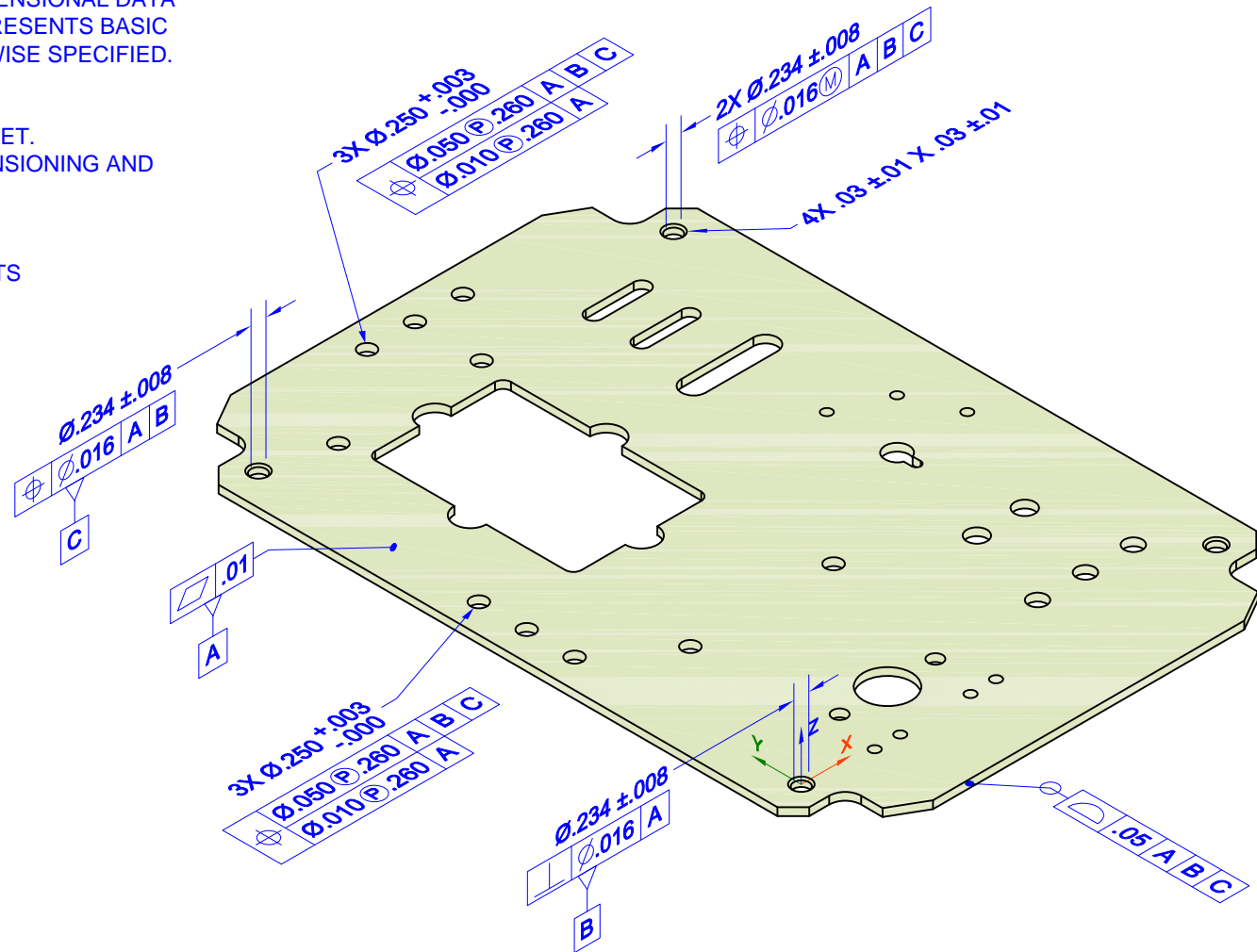


# NIST PMI Test Models - 2014

## NOTES (UNLESS OTHERWISE SPECIFIED):

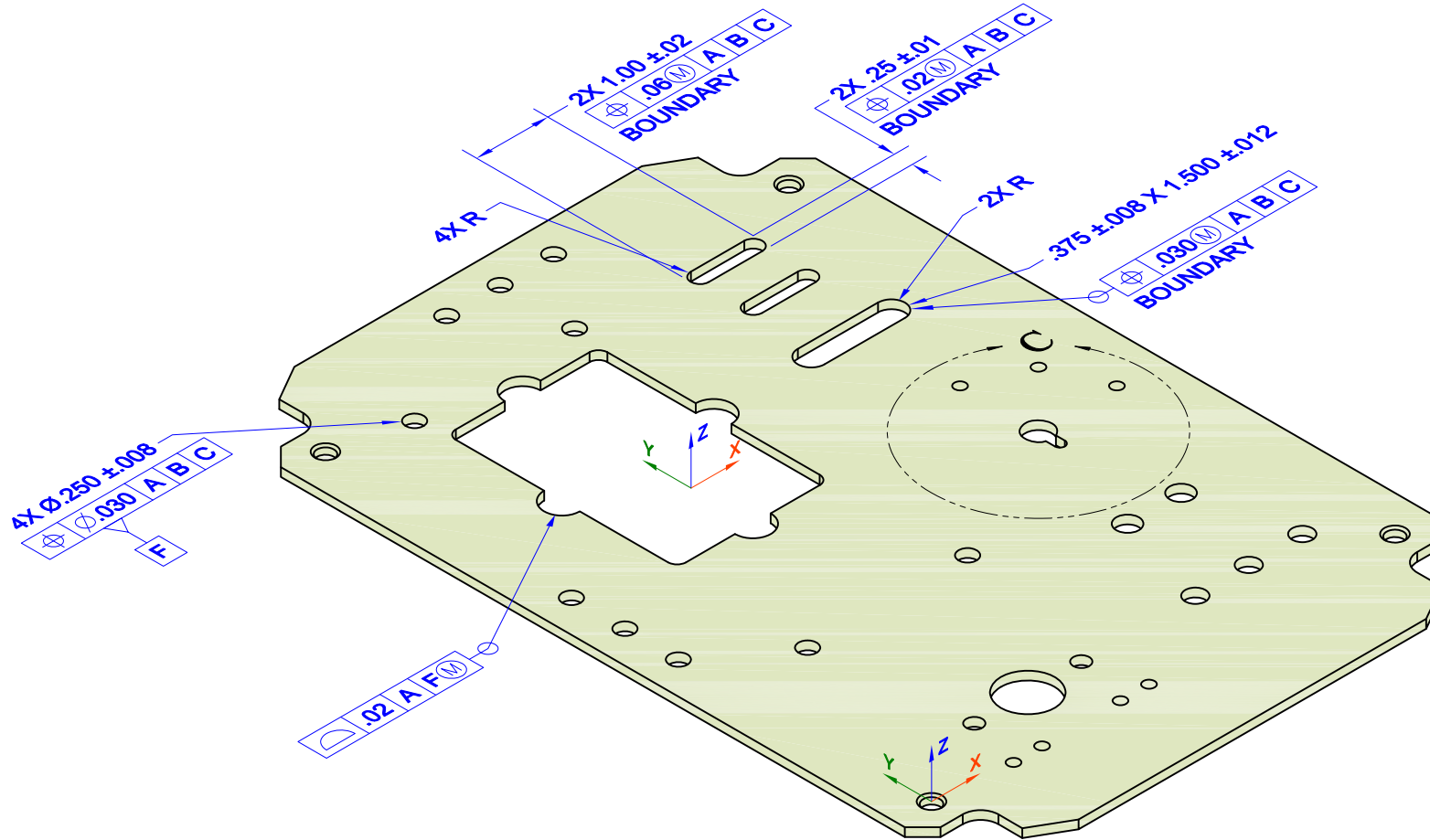
1. CAD MODEL \_\_\_\_\_ REV. \_\_ IS REQUIRED TO COMPLETE PRODUCT DEFINITION.
2. DIRECTLY-TOLERANCED DIMENSIONS AND BASIC DIMENSIONS DEFINED ON THE DRAWING TAKE PRECEDENCE OVER DIMENSIONAL DATA DEFINED BY THE MODEL. OBTAIN ALL OTHER DIMENSIONAL DATA FROM THE MODEL. THE MODEL REPRESENTS BASIC DIMENSIONAL DATA UNLESS OTHERWISE SPECIFIED.
3. APPLICABLE STANDARDS:  
ASME Y14.41-2003 APPLIES TO DATASET.  
ASME Y14.5M-1994 APPLIES TO DIMENSIONING AND TOLERANCING.
4. DIMENSION AND TOLERANCE VALUES SHOWN IN SQUARE BRACKETS [XXX] ARE MILLIMETERS.
5. MATERIAL: (.1195 THICK) 11 GA 304 SST SHT, ASTM A240.
6. UNITS: INCHES

Feature and Specification Index  
nist\_ftc\_09\_asme1\_rd\_fsi.pdf



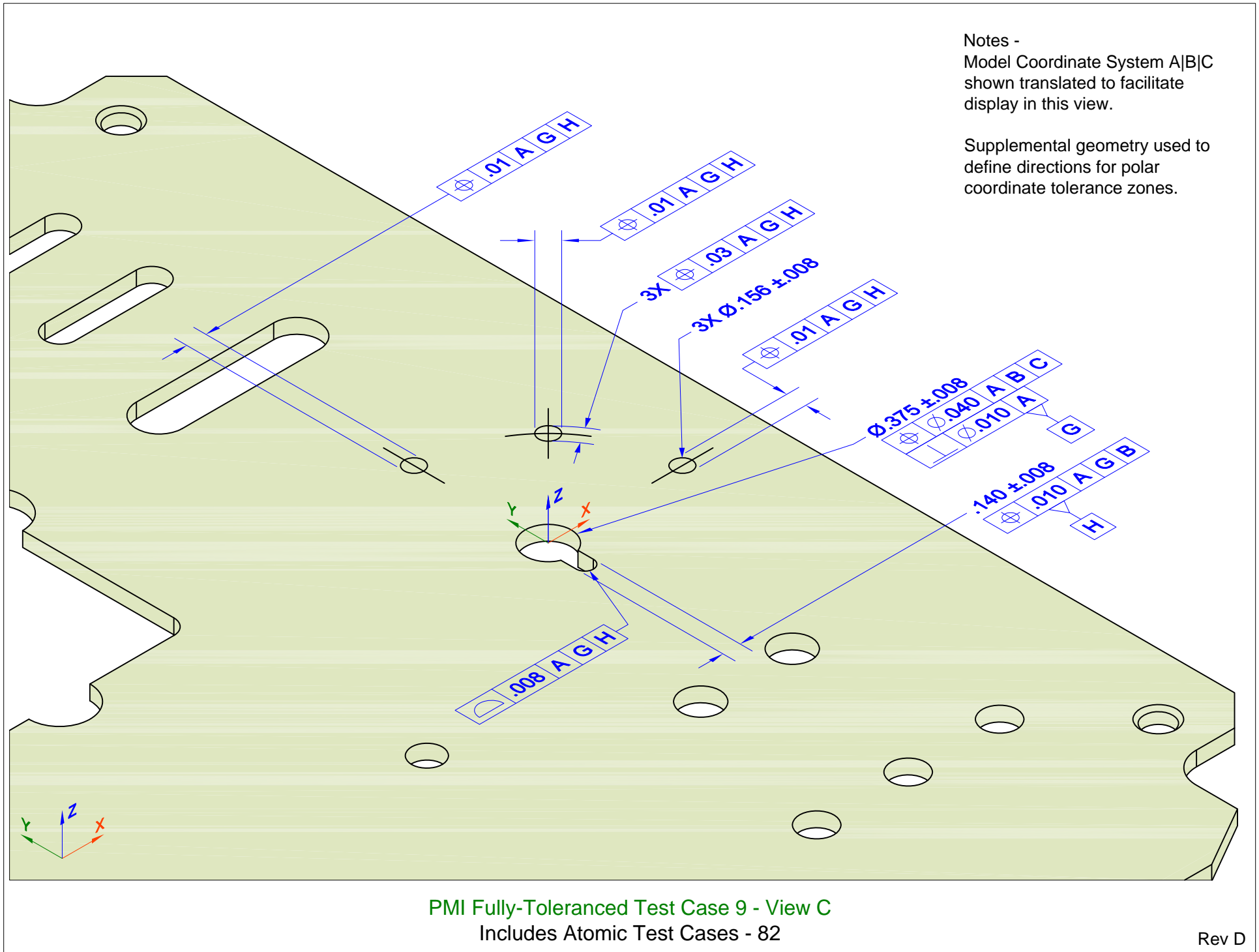
PMI Fully-Toleranced Test Case 9 - View A  
Includes Atomic Test Cases - 59, 61

# NIST PMI Test Models - 2014



PMI Fully-Toleranced Test Case 9 - View B  
Includes Atomic Test Cases - 75, 96, 97

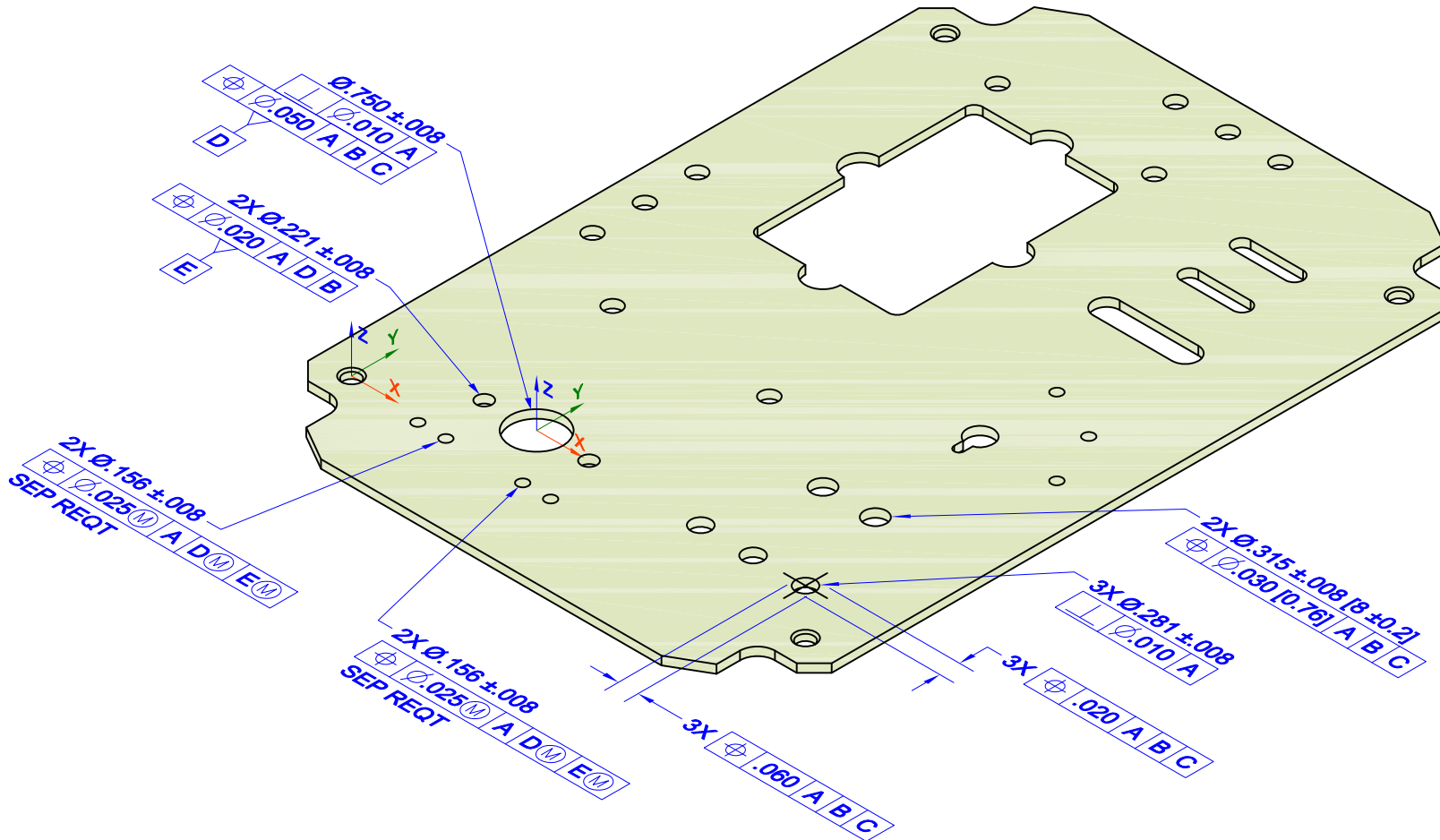
# NIST PMI Test Models - 2014



# NIST PMI Test Models - 2014

Notes -  
Dual units used for 2X Ø.315 holes.

Supplemental geometry used to define directions for rectangular coordinate tolerance zones.



PMI Fully-Toleranced Test Case 9 - View D  
Includes Atomic Test Cases - 81, 95, 98