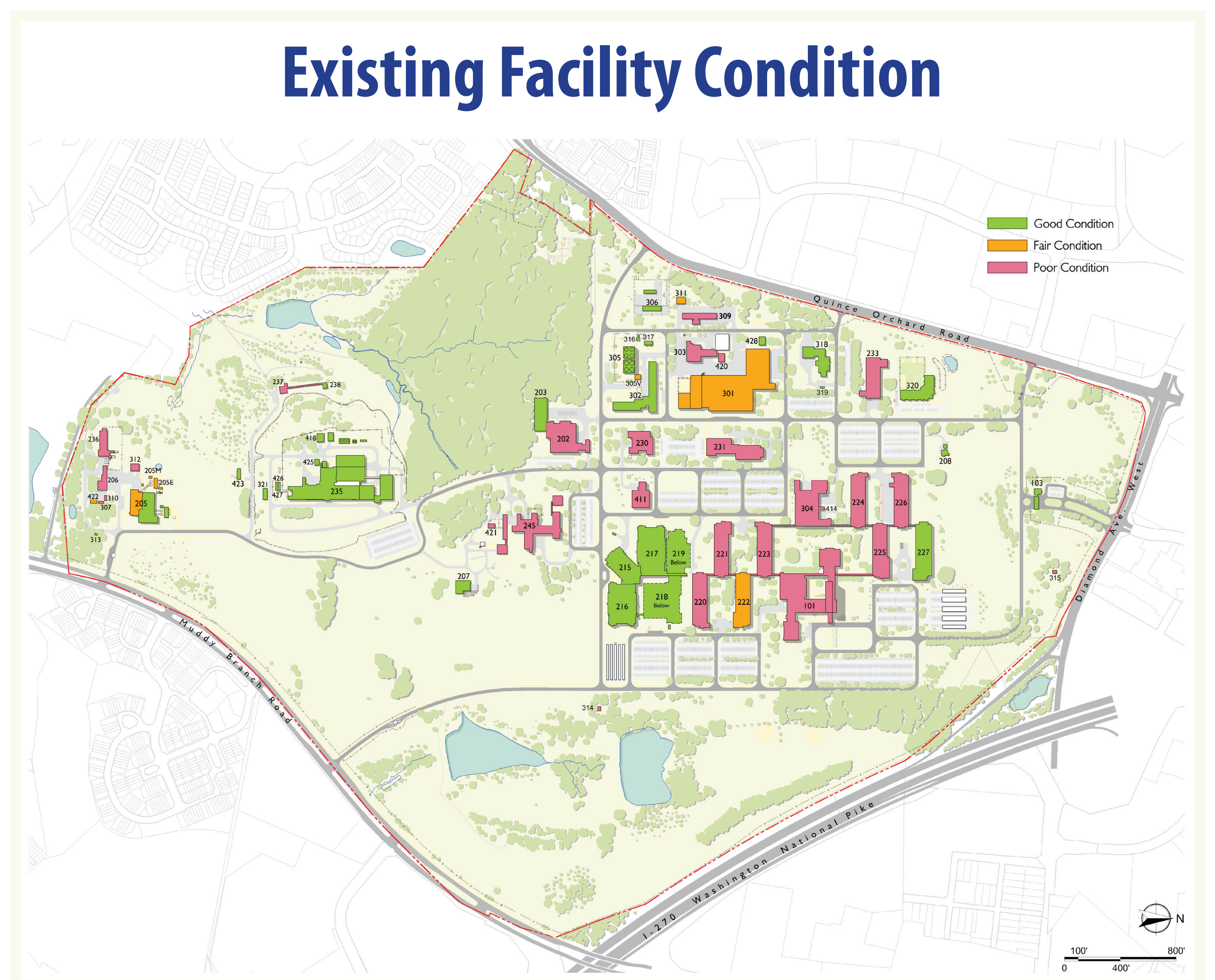


Environmental Assessment NIST Gaithersburg Master Plan

Who We Are

- NIST mission: To promote U.S. innovation and industrial competitiveness by advancing measurement science, standards, and technology in ways that enhance economic security and improve our quality of life
- Founded in 1901 and relocated from Washington, DC to Gaithersburg, MD Campus in 1960's
- Buildings totaling 3.6 million gross square feet on a 579-acre site
- Personnel count of about 4,000 federal staff and affiliates



Current Issues

- Poor lab environmental controls, limiting current and future research
- Aging buildings and infrastructure: 73% of today's assignable space is in buildings constructed in 1960's
- Historic District context
- Evolving security and safety requirements
- Conference center capacity and access
- Campus circulation and parking
- Landscape maintenance and stormwater management
- Energy efficiency and sustainability

Goals of the Master Plan

- Establish a framework for future development (20-year horizon)
- Meet near and long-term needs of the campus in support of NIST research mission
- Integrate recommendations from recent studies
- Maintain attractive campus environment
- Respect and embrace campus historic district designation
- Advance NIST and Department of Commerce sustainable design goals

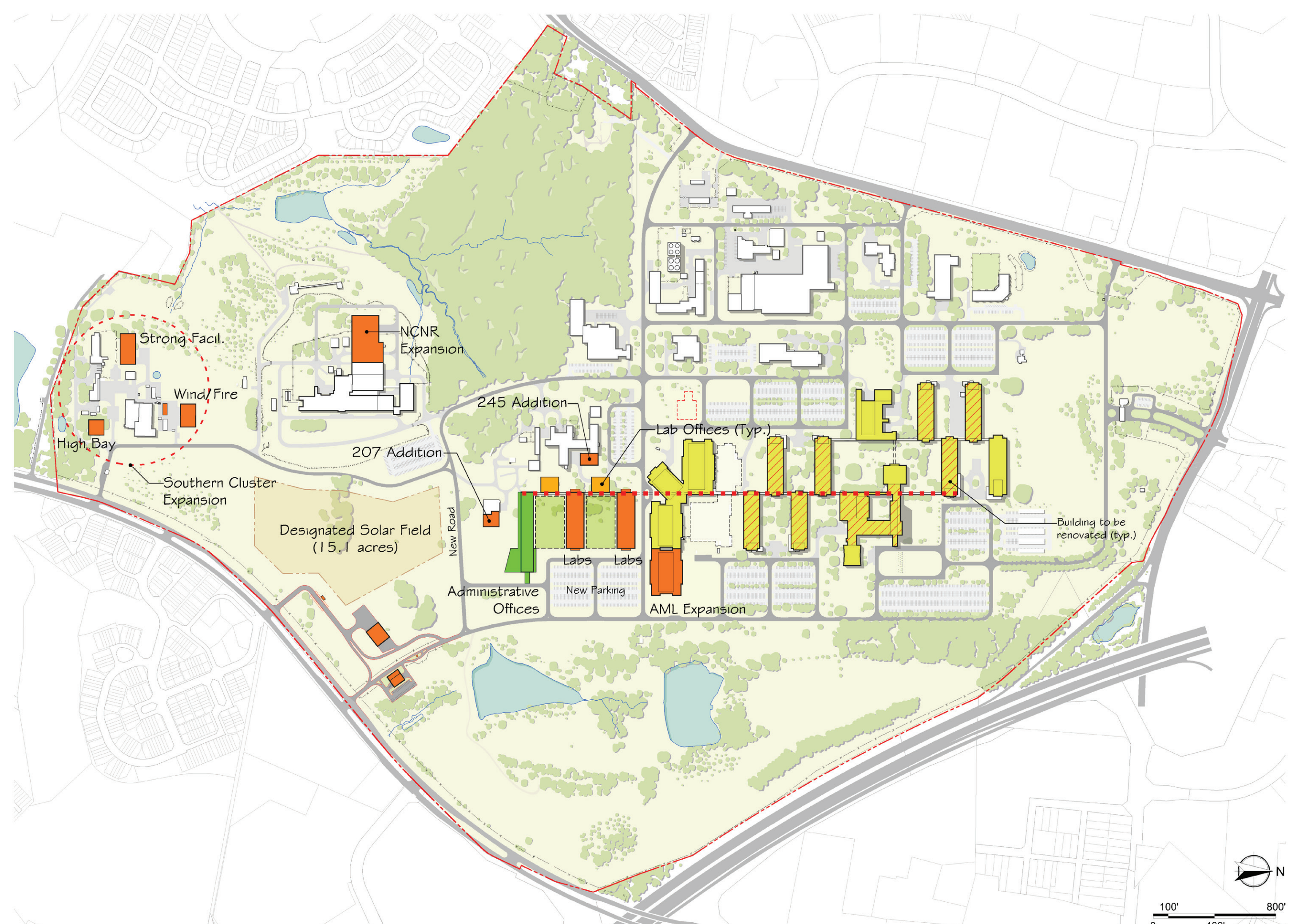
Environmental Assessment NIST Gaithersburg Master Plan

Master Plan Concepts

The selected Master Plan concept may include features from one or more of these alternatives.



ALTERNATIVE 1:
Extending Connections



ALTERNATIVE 2:
Creating a New Precinct

Environmental Assessment NIST Gaithersburg Master Plan

Master Plan Concepts

The selected Master Plan concept may include features from one or more of these alternatives.



ALTERNATIVE 3:
Capturing the Center



ALTERNATIVE 4:
New Research Emphasis

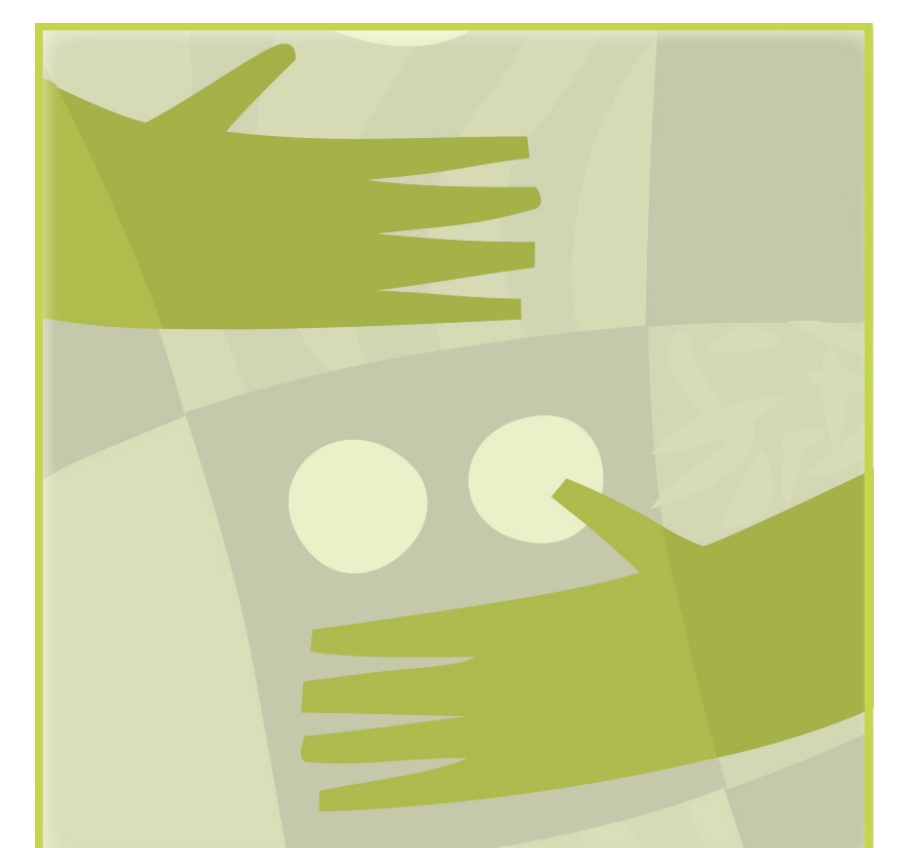
Environmental Assessment NIST Gaithersburg Master Plan

Providing Effective Public Comments

NIST will develop an Environmental Assessment (EA) to evaluate the environmental impacts associated with implementation of the selected Master Plan concept. The Draft Master Plan and Draft EA will be made available to the public for comment.

Get Involved:

- Your comments are important
- Public comments help to define the scope of the Master Plan and EA
- Public comments can improve the accuracy of the EA



Helpful Comments:

- Raise issues of concern early in the scoping process
- Are clear, concise, and relevant to the analysis
- Are solution oriented and provide specific examples
- Identify environmental resources of particular concern
- Suggest sources of relevant information to be considered
- Suggest additional alternatives to be considered



Provide Comments to:

NIST Master Plan Comments
National Institute of Standards and Technology
100 Bureau Drive, MS-1900
Gaithersburg, MD 20899-1900

Or by email to: nistMPcomments@nist.gov

Comments must be postmarked no later than June 15, 2017

