

Latent Print Quality Measures

Kasey Wertheim

“Instructor/Trainer”



www.clpex.com

Elements of Latent “Difficulty”

- **Quantity** - % of full print present, square area, etc.
- **Clarity** – Quality, Focus, Resolution, etc.
- **Contrast** – % of Grayscale range utilized, Average (shift), etc.
- **Pressure** – Vertical pressure, ridge to furrow thickness, etc.
- **Slippage** – Lateral pressure, ridge flow distortion, smearing, etc.
- **Background** – Substrate distortion, texture interference, etc.
- **Focal Points** – Core, Delta, Occasional features, Major flow convergence/divergence, etc.

Verification Packet Worksheet

ANSWER SHEET

LAT. # (in order)	Quant	Clarity	Contrast	Pressure	Lateral	Bckgrnd	Focals	TIME (min) per latent	LAST NAME of Identified (please print)	FINGER NUMBER	Confidence 1-3
	1-5	1-5	1-5 (L-D)	1-5	1-5	1-5	1-5				
F2-01	5	5	5	5	5	5	5	2	Locard	4	3
F2-02	4	4	3	4	3	4	3	30	Thompson	1	3
F2-03	4	4	4	4	4	4	3	4	Cummins	2	3
F2-04	4	4	4	4	4	4	4	5	Chatterjee	LP	3
F2-05	5	4	4	4	4	4	4	2	Hale	2	3
F2-06	5	5	5	4	4	4	5	2	Bidloo	7	3
F2-07	5	5	5	4	4	4	5	2	Locard	5	3
F2-08	4	5	4	3	4	4	4	10	Thompson	2	3
F2-09	5	5	5	5	5	5	5	8	Chatterjee	RP	3
F2-10	5	4	3	3	3	3	4	10	Cummins	8	3

Examples

- **Quantity** - % of full print present, square area, etc.

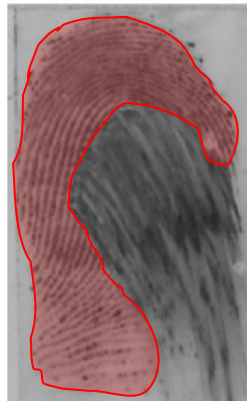
Very easy (5)

>50%



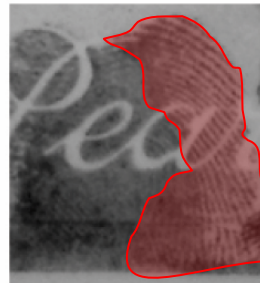
Easy (4)

30-50%



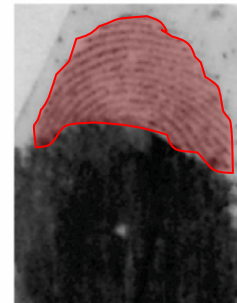
Average (3)

15-30%



Hard (2)

5-15%



Very hard (1)

<5%

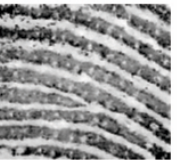
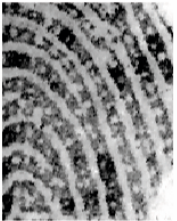


Examples

- **Clarity** – Quality, Focus, “Crispness”, Resolution, etc.

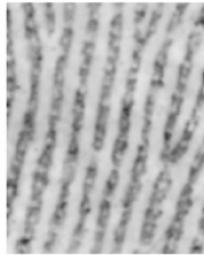
Very easy (5)

Very high



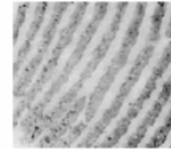
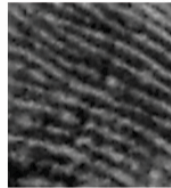
Easy (4)

High



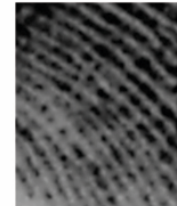
Average (3)

Average



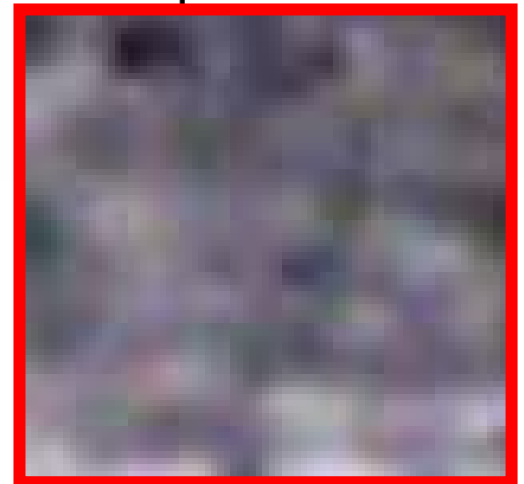
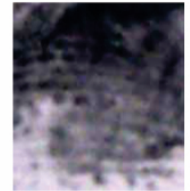
Hard (2)

Low



Very hard (1)

Very low



Examples

- **Contrast** – % of Grayscale range utilized, Average (shift), etc.

Very easy (5)

Very high



Easy (4)

High



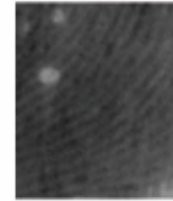
Average (3)

Average



Hard (2)

Low



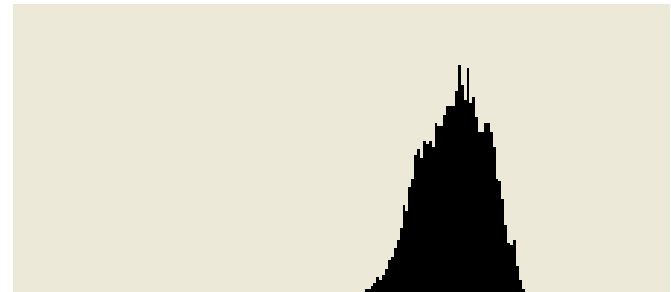
Very hard (1)

Very low



“L”

“D”

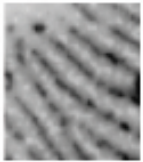


Examples

- **Pressure** – Vertical pressure, ridge to furrow thickness, etc.

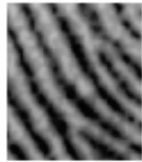
Very easy (5)

Very low



Easy (4)

Low



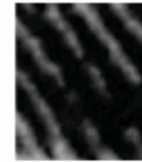
Average (3)

Average



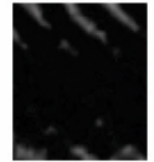
Hard (2)

High



Very hard (1)

Very high



Examples

- **Slippage** – Lateral pressure, ridge flow distortion, smearing, etc.

Very easy (5)

Very low



Easy (4)

Low



Average (3)

Average



Hard (2)

High



Very hard (1)

Very high



Examples

- **Background** – Substrate distortion, texture interference, etc.

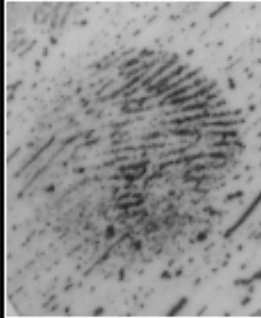
Very easy (5)

Very low



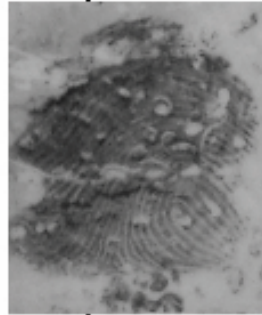
Easy (4)

Low



Average (3)

Average



Hard (2)

High



Very hard (1)

Very high

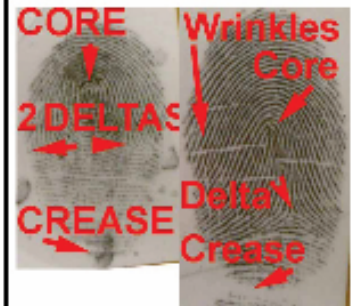


Examples

- **Focal Points** – Core, Delta, Occasional features, Major flow convergence/divergence, etc.

Very easy (5)

4 or more



Easy (4)

3



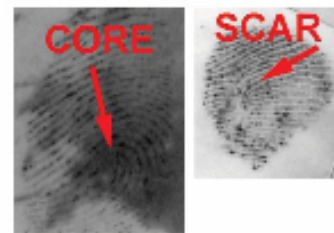
Average (3)

2



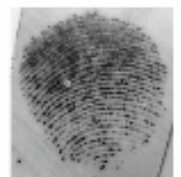
Hard (2)

1



Very hard (1)

None



Discussion

- Are there other elements?
- Do current automated quality algorithms capture these elements?
- Can they be refined to do so?
- What role should human examiner perspectives/experience play in shaping how automated quality measures are defined?

Contact Information

- Kasey Wertheim
Instructor/Trainer
Complete Consultants Worldwide, LLC
- kaseywertheim@clpex.com
- kaseywertheim@aol.com
- www.clpex.com (Complete Latent Print Examination)