

---

DECEMBER 02, 2019

# Perception Challenges in Industrial Applications

Remus Boca, ABB Future Labs

**ASTM International Committee on 3D Imaging Systems (E57), NIST Workshop**



# Perception Challenges in Industrial Applications

---

Bio

Bin Picking

2008



*Featuring  
eVisionFactory RBP*

**RBP™**

# Perception Challenges in Industrial Applications

---

## Agenda

**As the world moves towards autonomy, the sensing and perception are becoming (critical) important.**

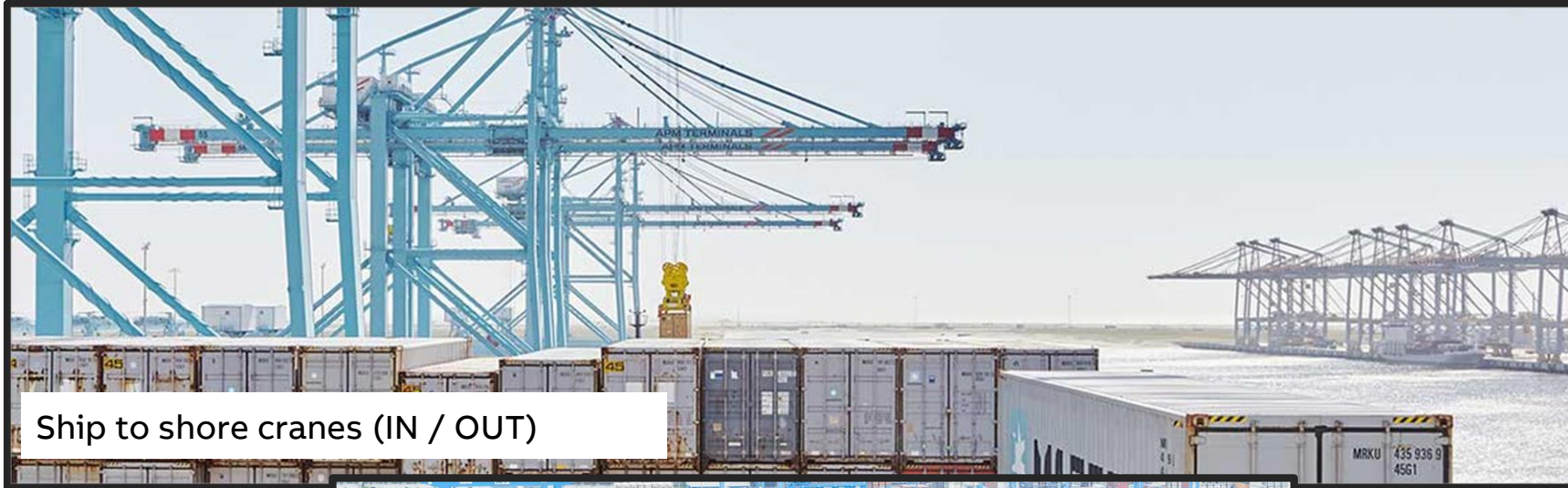
**Industrial applications have their own challenges as they operate in possible harsh environments, they require continuous and robust operation, need to accommodate unstructured environments, acknowledge a wide range of states and unexpected events.**

**This talk presents perception needs and challenges across many industries such as ports, mining, transformer inspection and robotics.**



# Perception Challenges in Industrial Applications

## Ports



Ship to shore cranes (IN / OUT)



Straddle carriers



Stacking cranes operating in the shipyard



Port gates (IN / OUT)



# Perception Challenges in Industrial Applications

## Ports



### Multiple vision modalities for different tasks

- remote control
- pick / drop container
- safety

### Outdoor operation

- Enclosure is needed
- environment conditions : day / night; sunny, cloudy, rain, snow, wind; humidity

### Working range

- from 1m to 30m (stacking crane)
- from 1m to 85 m (ship to shore)

### Accuracy medium to low (cm)

### Access to sensors is required

### Objects of interest wear and tear

- container & container stacks
- chassis
- ships / bays



# Perception Challenges in Industrial Applications

Mining



<https://new.abb.com/news/detail/11252/abb-ability-conveyor-roller-inspection-services>

**ABB**



# Perception Challenges in Industrial Applications

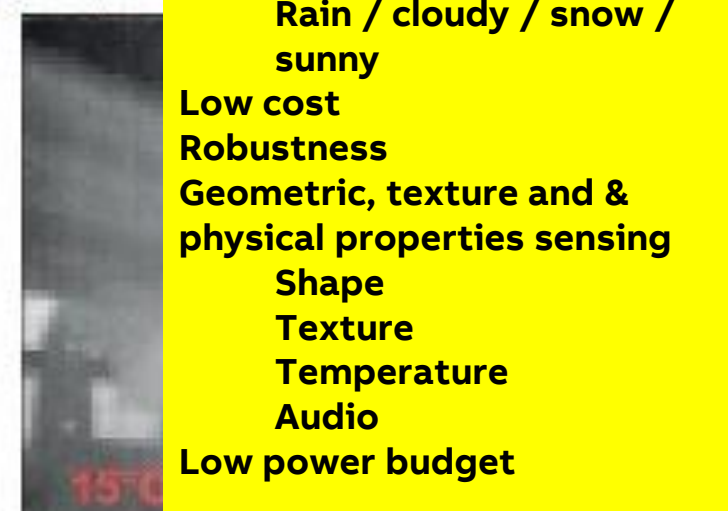
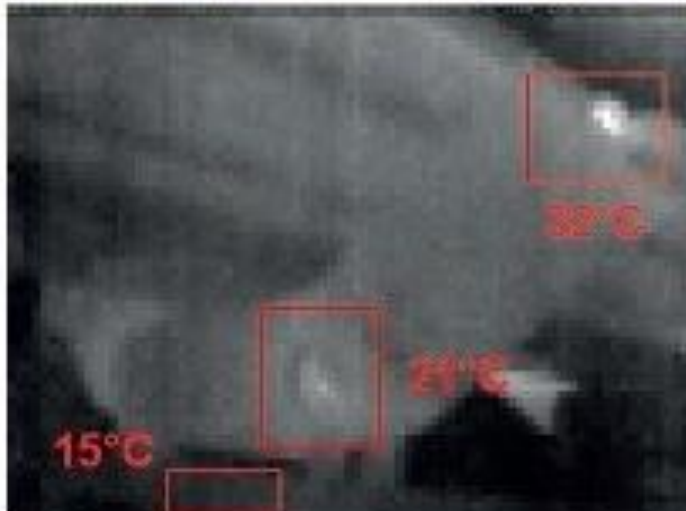
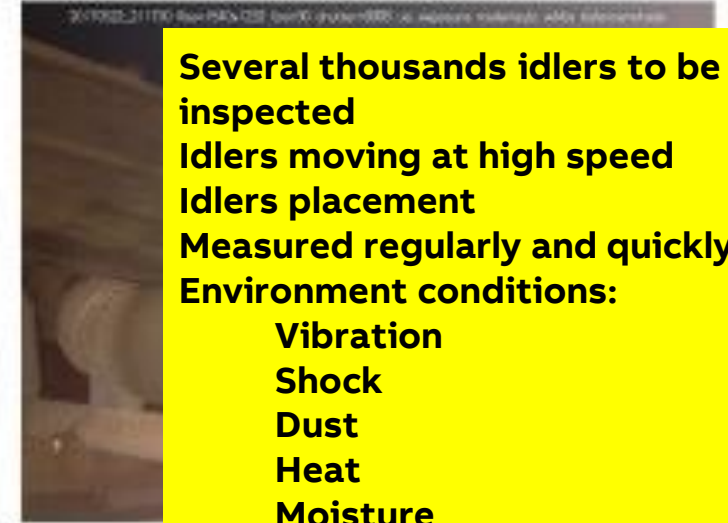
## Mining



23.04.2018 02:33:35 IdlerID: West



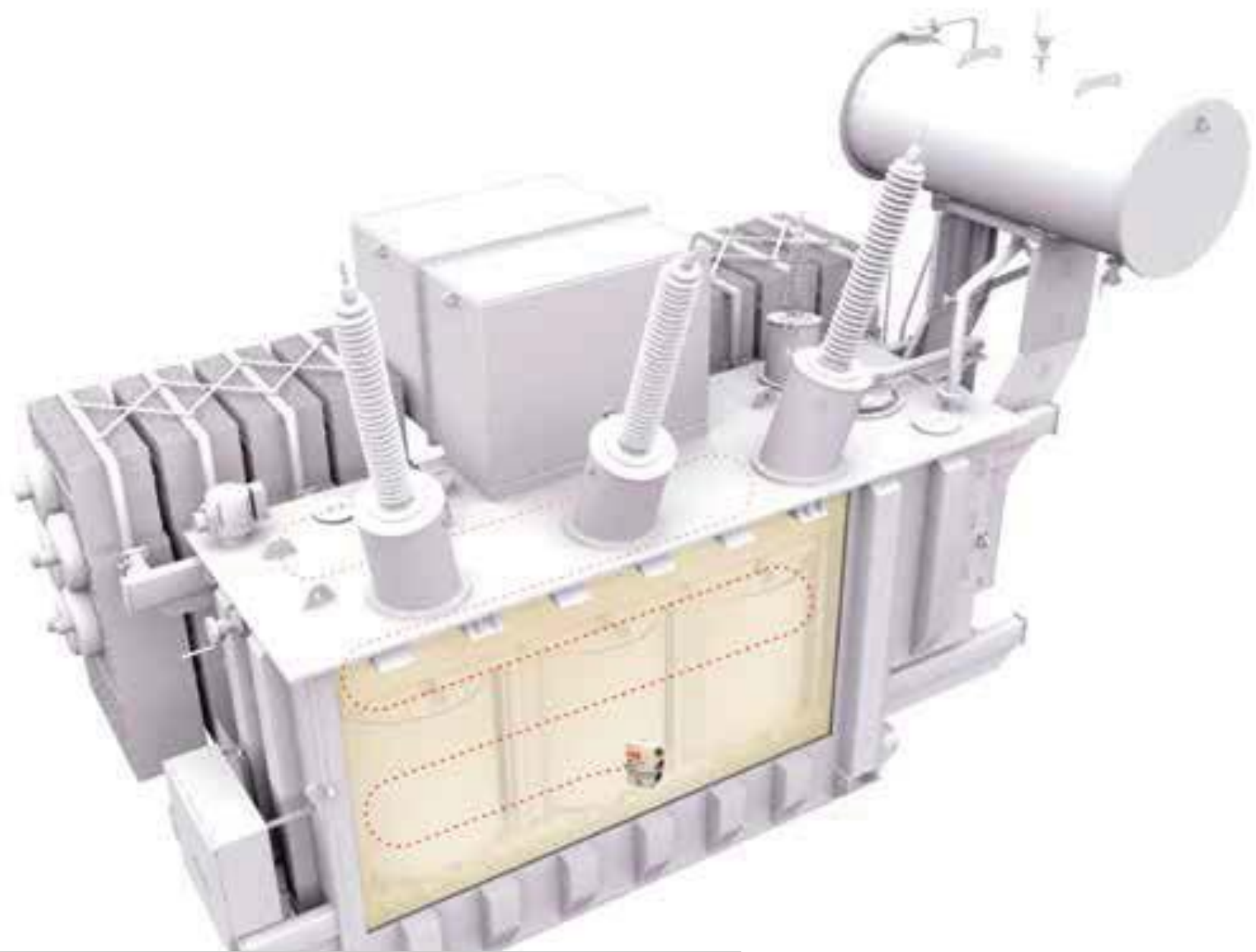
23.04.2018 03:42:11 IdlerID: East



- Several thousands idlers to be inspected
- Idlers moving at high speed
- Idlers placement
- Measured regularly and quickly
- Environment conditions:
  - Vibration
  - Shock
  - Dust
  - Heat
  - Moisture
  - Rain / cloudy / snow / sunny
- Low cost
- Robustness
- Geometric, texture and & physical properties sensing
  - Shape
  - Texture
  - Temperature
  - Audio
- Low power budget

# Perception Challenges in Industrial Applications

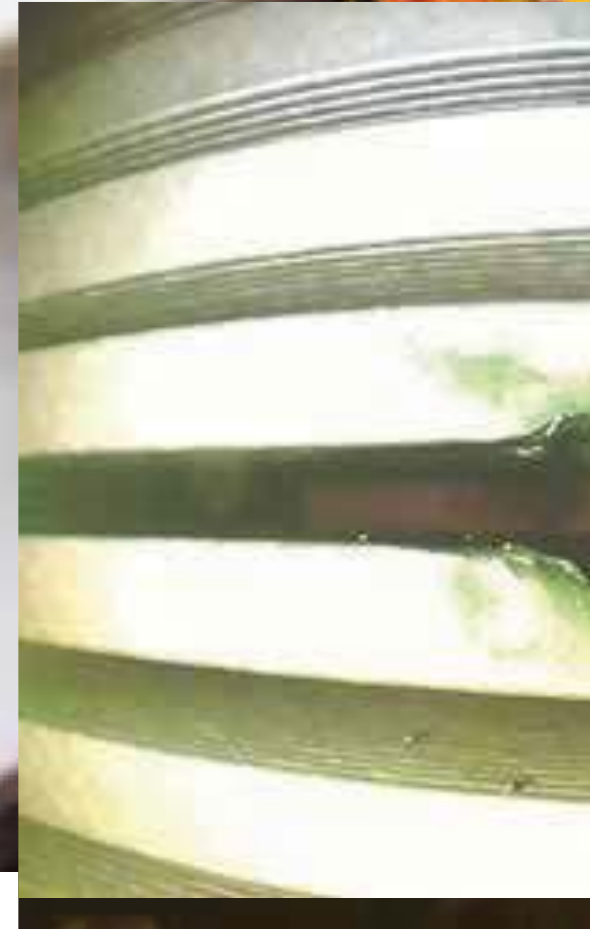
Transformer  
inspection





# Perception Challenges in Industrial Applications

## Transformer inspection



**Operating environment**  
It can be contaminated  
Decontaminate after every use  
Wide range of temperatures

**Resolution for quality images**  
**Field of view / surround**  
**Short distance**  
**Lighting**  
**More than one sensor**  
**Many types of defects**  
Appearance  
Geometric

**Wireless communication**  
**Sensors are critical to operate while submersed (expensive to recover the device)**  
redundant cameras

# Perception Challenges in Industrial Applications

Transformer Inspection  
ABB Ability TXplore



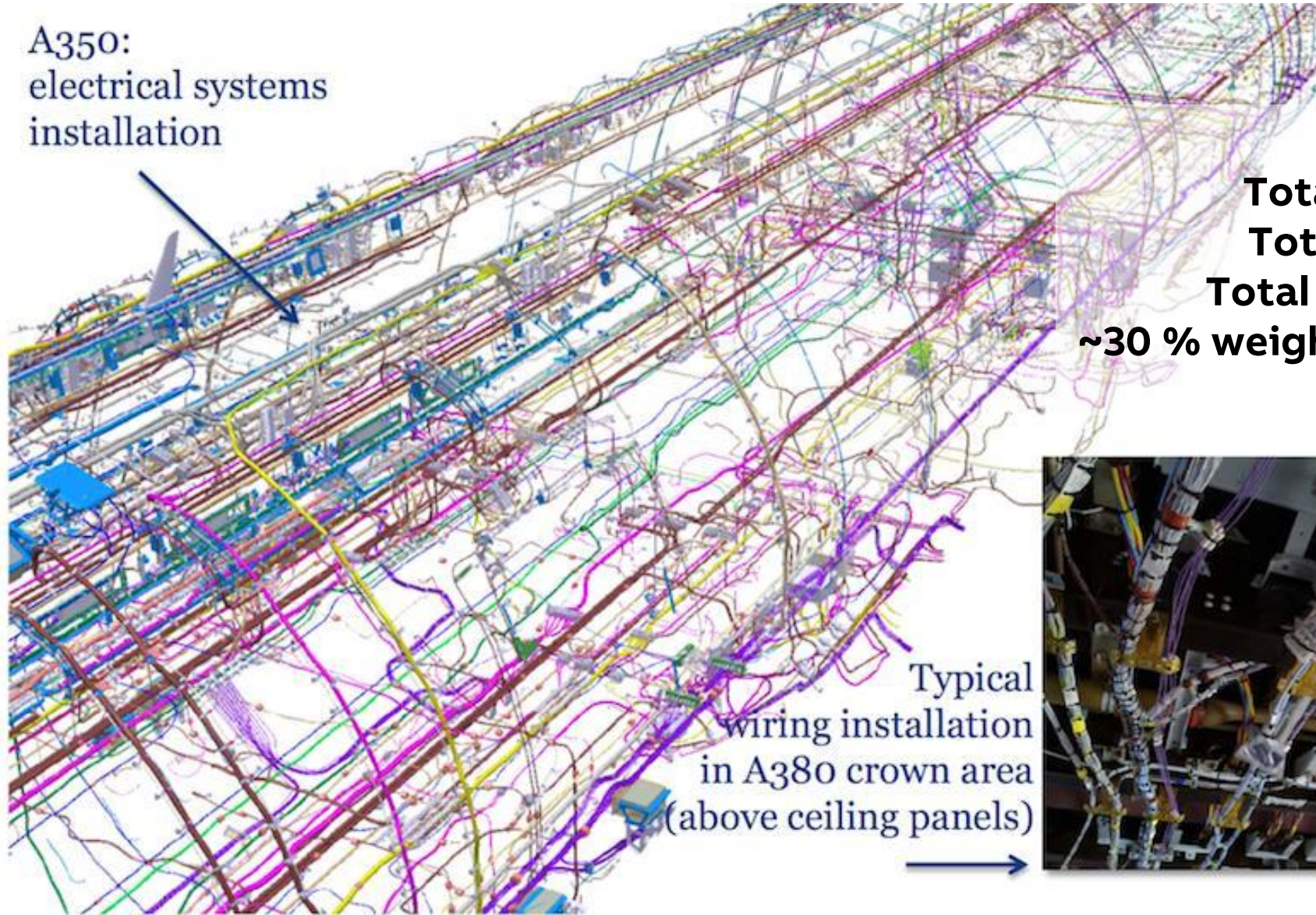
<https://www.youtube.com/watch?v=OclzoEc8pIE>



# Perception Challenges in Industrial Applications

## Wire assembly

A350:  
electrical systems  
installation



**A380**

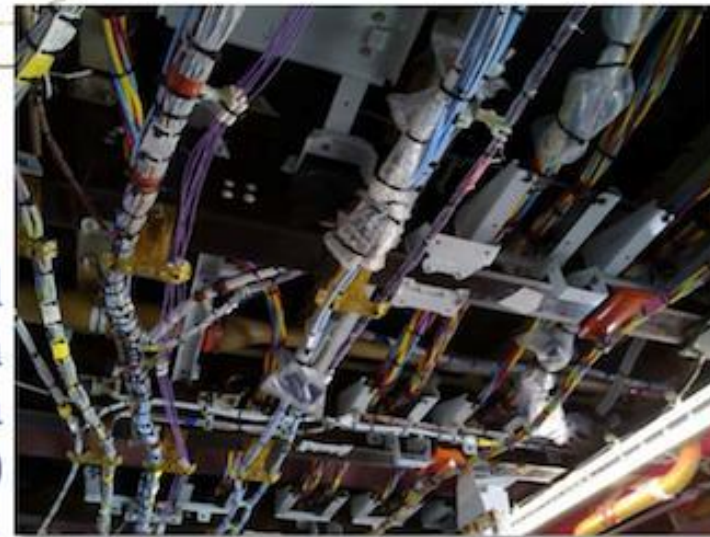
**Total wire count ~100 000**

**Total wire length ~470Km**

**Total weight of wires 5700 Kg**

**~30 % weight to fix cables to the structure**

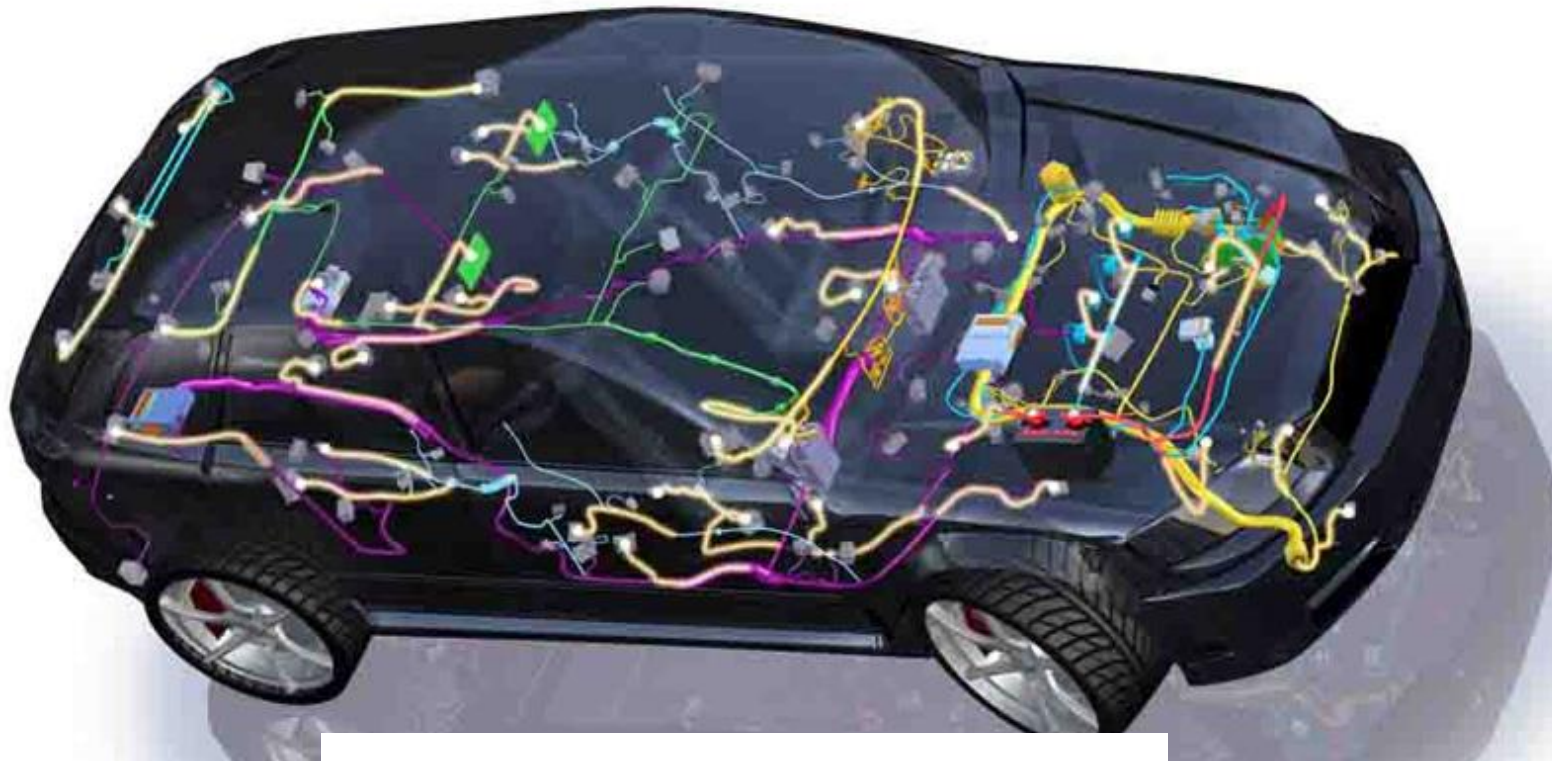
Typical  
wiring installation  
in A380 crown area  
(above ceiling panels)





# Perception Challenges in Industrial Applications

## Wire assembly



**Luxury car**  
**Total wire count ~1500**  
**Total wire length ~1 Mile**  
**Total weight of wires 150 #**

Accuracy sub-mm  
High resolution  
High frame rate  
Small and large field of view  
Small footprint  
Short range  
Quality components (lens, global shutter)  
Multiple sensors working on the same field of view  
Low cost  
Lifecycle as long as a robot  
Easy diagnostic  
Industrial communication protocols  
Easy customization



# Perception Challenges in Industrial Applications

## Ports

Multiple modalities for different tasks

- remote control
- pick / drop container
- safety

Outdoor operation

- enclosure
- environment conditions : day / night; sunny, cloudy, rain, snow, wind; humidity

Working range

- from 1m to 30m (stacking crane)
- from 1m to 85 m (ship to shore)

Accuracy medium to low (cm)

Access to sensors

Objects of interest wear and tear

- container & container stacks
- chassis
- ships / bays

## Mining

Several thousands idlers to be inspected

Idlers moving at high speed

Idlers placement

Measured regularly and quickly

Outdoor & environment

conditions:

Vibration

Shock

Dust

Heat

Moisture

Rain / cloudy / snow / sunny

Low cost

Robustness

Geometric, texture and & physical properties sensing

Shape

Texture

Temperature

Audio

Low power budget

## Transformer inspection

Operating environment

It can be contaminated

Decontaminate after every use

Wide range of temperatures

Resolution for quality images

Field of view / surround

Short distance

Lighting

More than one sensors

Many types of defects

Appearance

Geometric

Wireless communication

Sensors are critical to operate while submersed (expensive to recover the device)

redundant

cameras

## Wire assembly

Accuracy sub-mm

High resolution

High frame rate

Small and large field of view

Small footprint

Short range

Quality components (lens, global shutter)

Multiple sensors working on the same field of view

Low cost

Lifecycle as long as a robot

Easy diagnostic

Industrial communication protocols

Easy customization

**ABB**