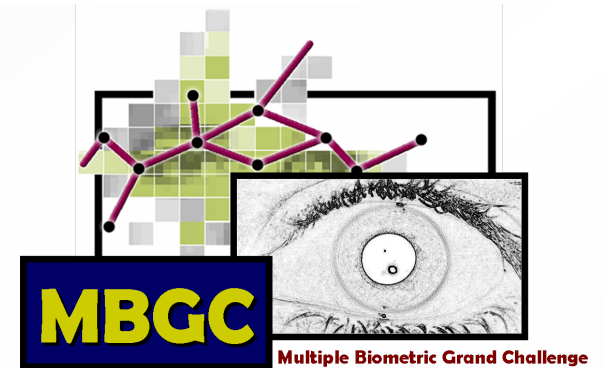


# MBGC Conclusion

- Concluded December 2009
  - Workshop 4 December 2009
- Challenge Problems arising from MBGC
  - Non-frontal still and video
  - Good, Bad, & Ugly still face
- Proposed Challenge Problems in development
  - Performance prediction

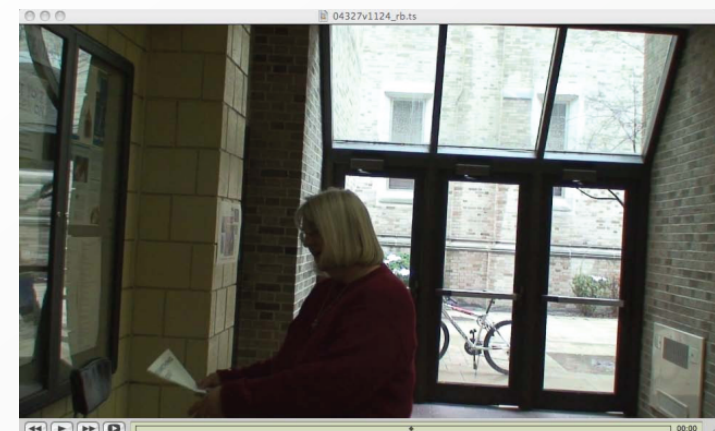
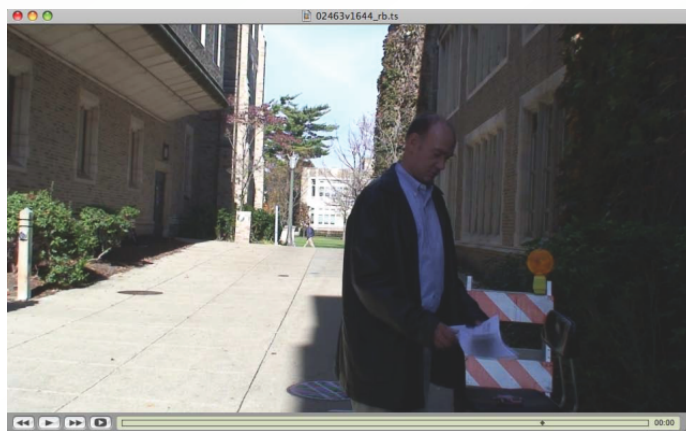
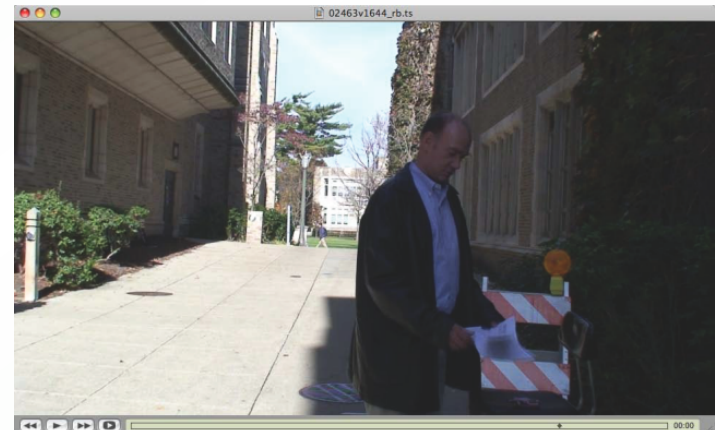


# Non-frontal Video

*Walking  
Vs.  
Activity*

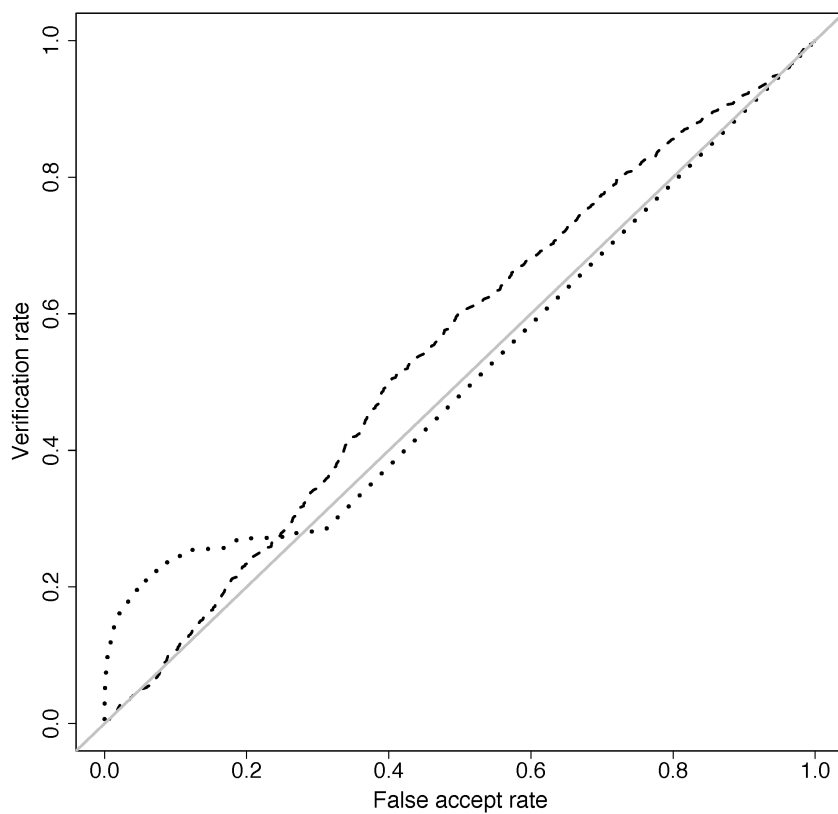


*Activity  
Vs.  
Activity*

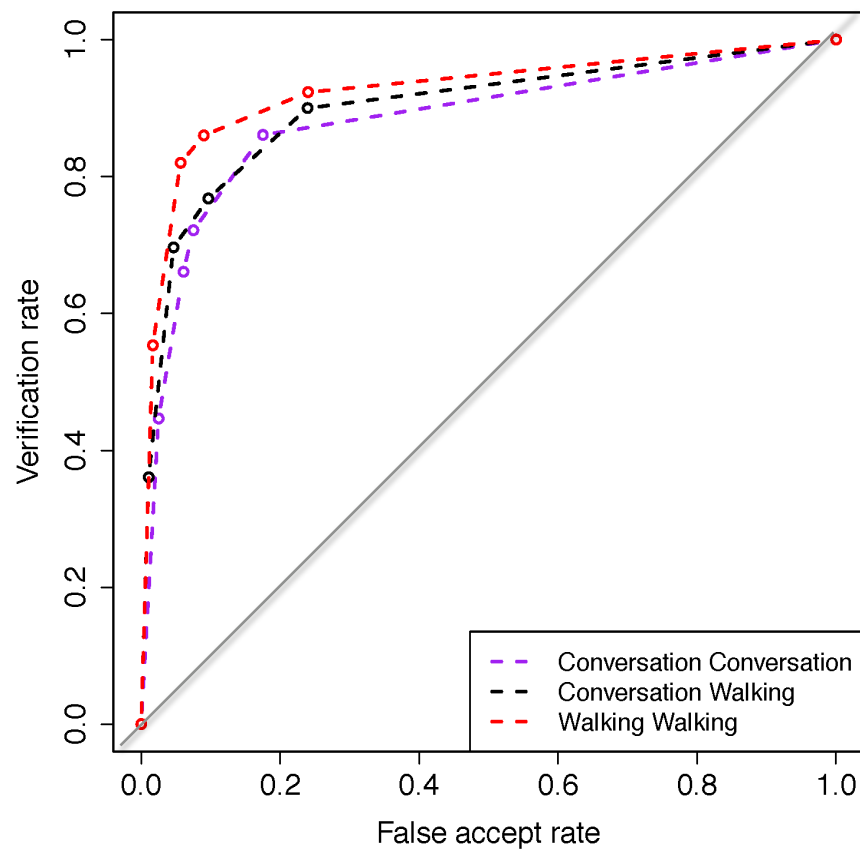


# Algorithm vs. Human Performance

Algorithm Performance



Human Performance



# Face Pairs

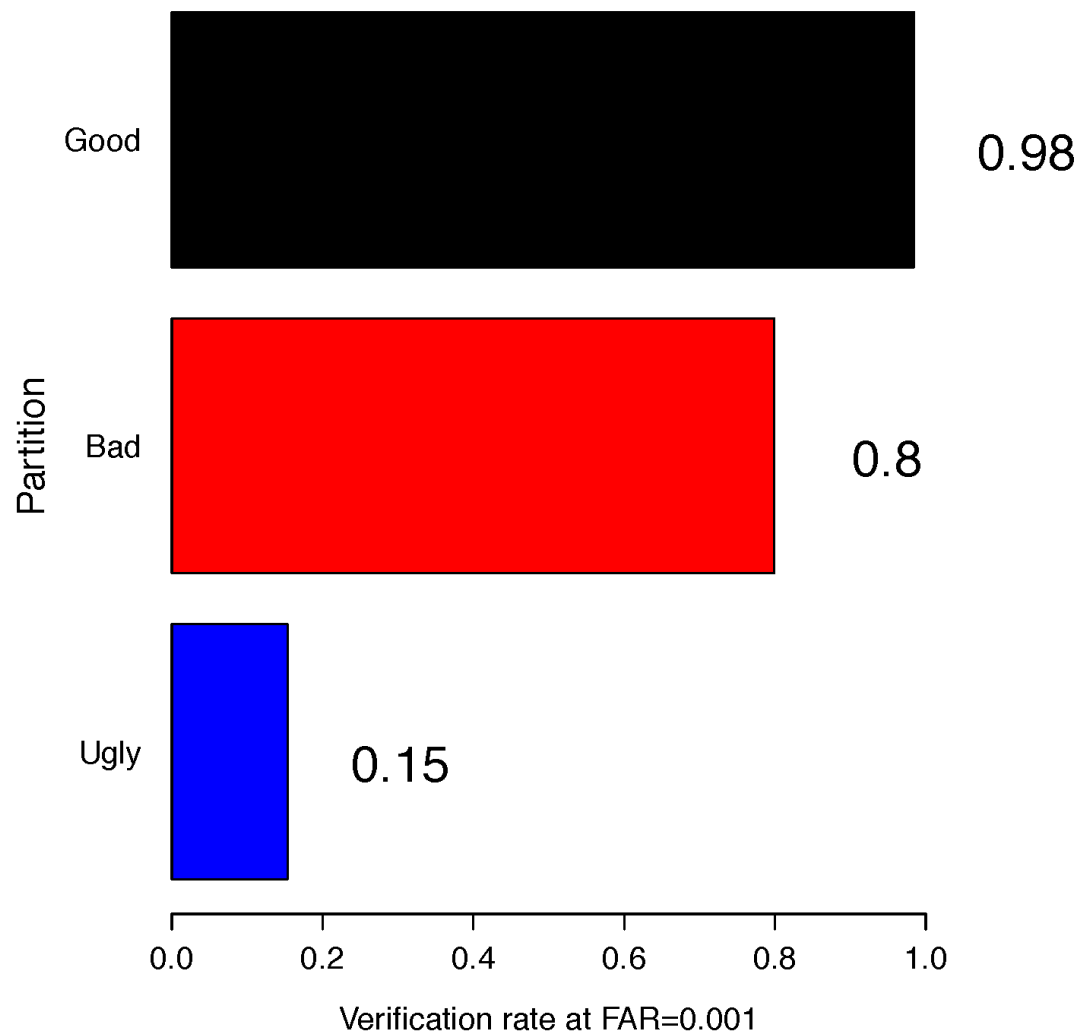
*Good Face Pairs*



*Challenging Face Pairs*



# Good, Bad, Ugly Performance



# Multiple Biometric

# EVALUATION

2010

- The Still Face Track
  - Three million faces
  - Open till 26 May
- Portal Track
  - Based on portal challenge problem
    - Begins on April 12<sup>th</sup> 2010
- Video Track
  - Based on video challenge problem
    - Begins on March 31<sup>st</sup> 2010