

LOCKHEED MARTIN



Predictive Asset Management and Applications to Manufacturing

NIST STANDARDS REQUIREMENTS WORKSHOP

Gaithersburg, MD, May 2019

James Waltner

Data Scientist / Analyst

With contributions from:

Greg Kacprzyński, Mike Koelemay, Sam Friedman, John Labarga,
Matt Trudeau, Hari Khanal, et al

Rotary & Mission System (RMS)

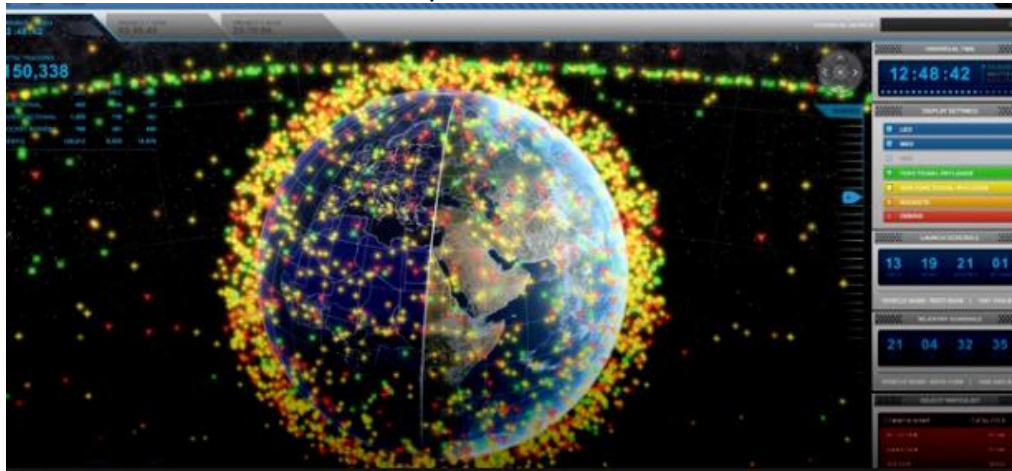
Analytics, Prognostics & Health Management, and Artificial Intelligence (APAI) Innovations

LM produces some of the most sophisticated equipment on the planet...

- Planes
- Helicopters
- Satellites
- UAVs
- Rockets
- Ships
- Radars
- Lasers
- Fusion reactors
- and more..

...with some very important and complex missions

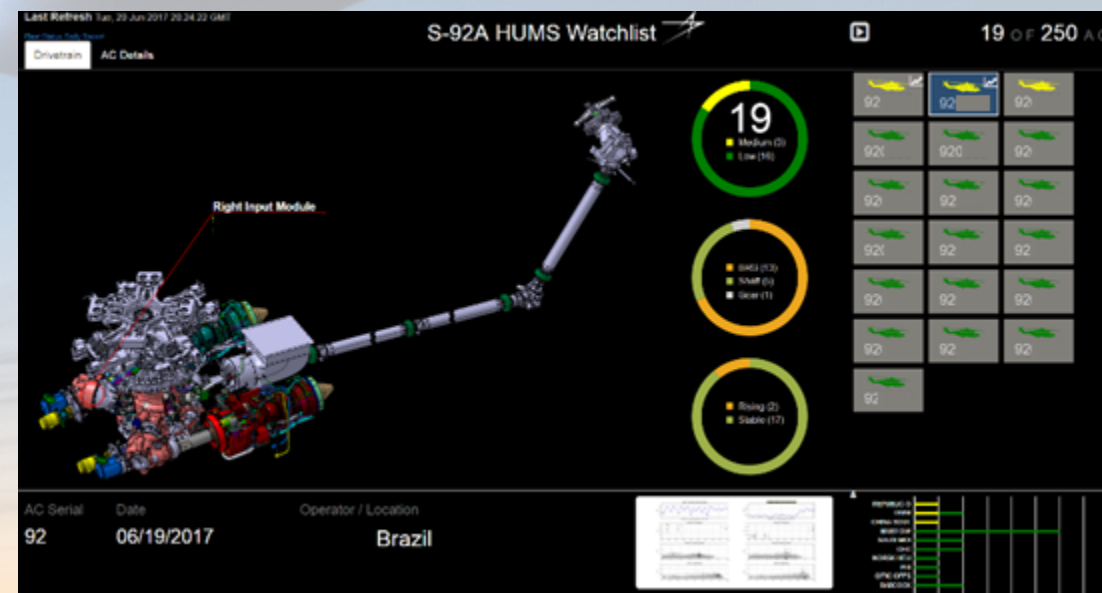
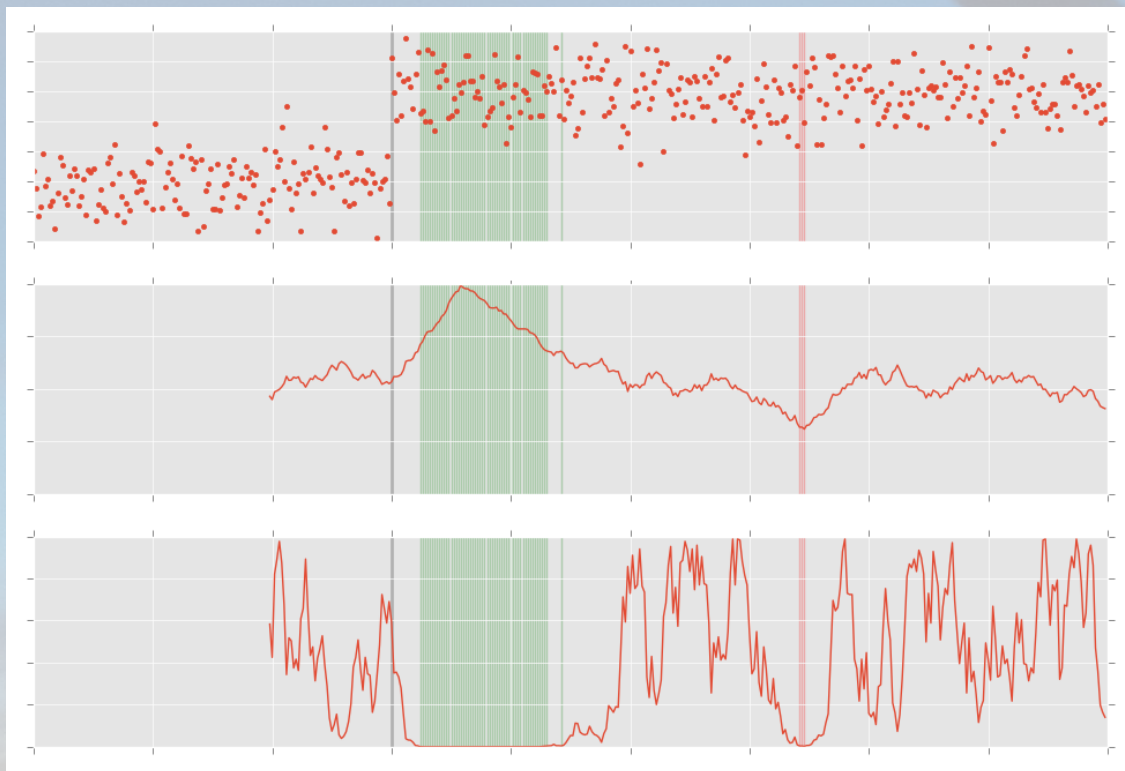
- Humanitarian Assistance & Disaster Relief
- Global materiel transport
- Human Mission to Mars
- Even tracking space junk!



...so we collect lots of data (variety & volume) to help us sustain these fleets.

- Platform Operational data (e.g. Health & Usage Monitoring Systems (HUMS))
- Flight Tests
- Supply chain & logistics
- Maintenance
- Safety
- Operator meta-data
- Engineering

Equipment Prognostics & Health Management (PHM)



Reducing Costs and Improving Reliability

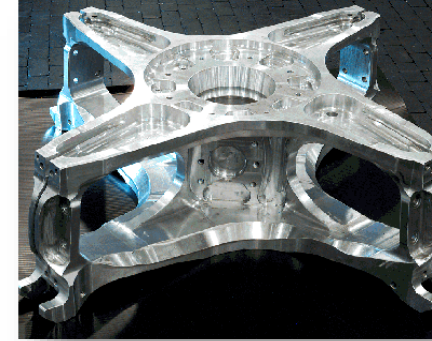
Level-of-Repair Optimization

Opportunity to reduce removals



Extending Time-on-Wing

Leveraged HUMS and maintenance data to identify candidates for TBO extension



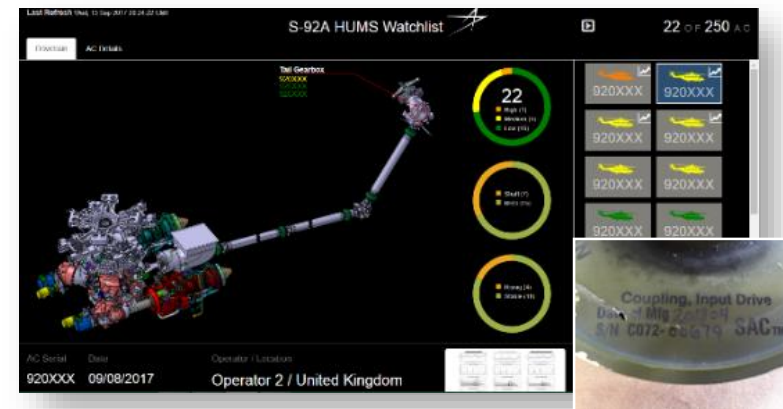
Repairability

Developed repairs to reduce scrap rates

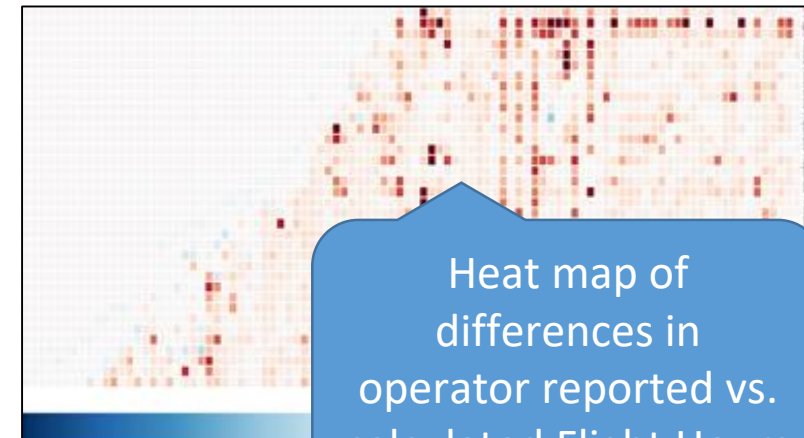
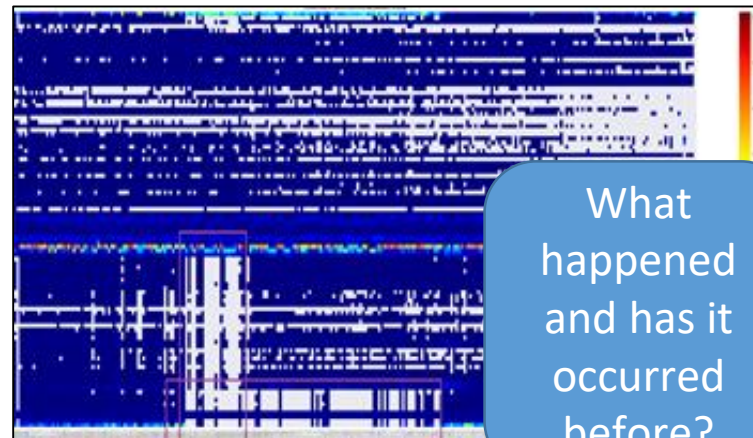
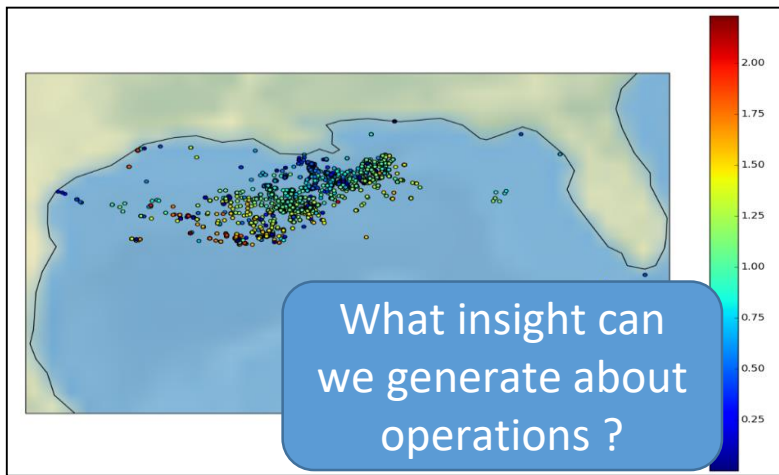
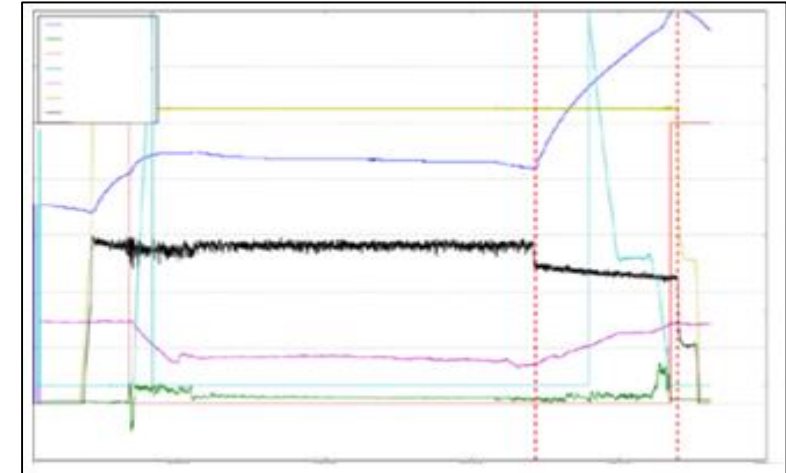
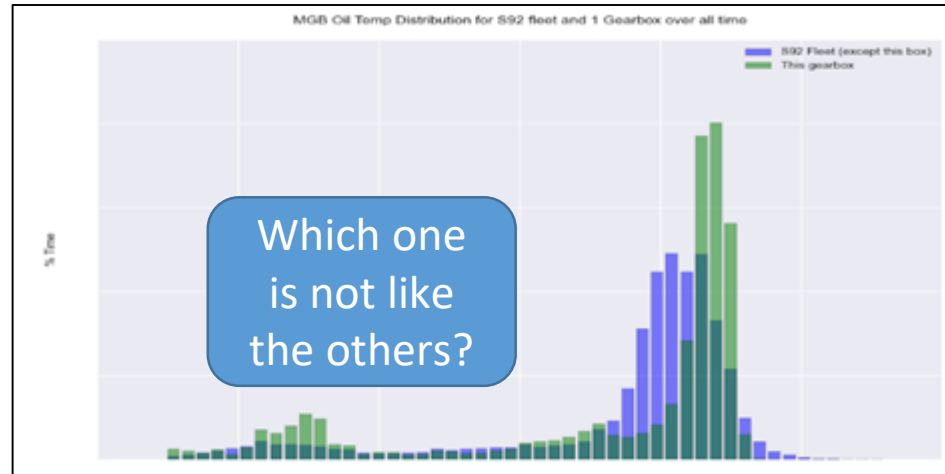
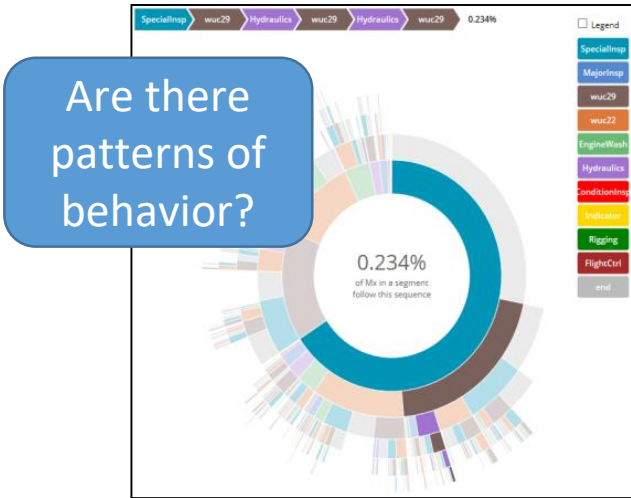


Downtime Avoidance

HUMS trend monitoring



Ad Hoc Analyses



Total System Health Management

Engine

Auto Power Assurance
LRU Fault Diagnostics
Propulsion System Diagnostic Reasoner
Engine Prognostics

Drive System

Loads Monitoring
Adv. Dynamic Load-Based Diagnostics
Drive System Diagnostic Reasoner
Oil condition & debris monitoring

Rotor & Propulsion System

Rotor State - Load & Motion Sensors
Virtual Monitoring Loads
Rotor Component Health Monitoring
Rotor System Diagnostic Reasoner
Blade Impact Detection & Characterization
Automated Rotor Track & Balance



Airframe

GW/CG monitoring
Global/Local Loads & Impact Monitoring
Environment Monitoring & Risk Assessment
Fatigue, Corrosion, Impact/Battle Damage Detection
Structural Integrity Reasoner

Adaptive Controls

Load limiting controls
Damage adaptive controls

Flight Controls & Hydraulics

Hydraulic Leak Detection
Hydraulic Pump Diagnostics
Servo Diagnostics

Electric Power & Wiring

Smart solid state power
Distribution components
Wire fault detection & isolation
LRU diagnostic reasoner

Fleet Management

Usage-Based Maintenance
Condition-Based Maintenance
Damage Tolerance
Maintenance-Free Operation Period

Fleet Management



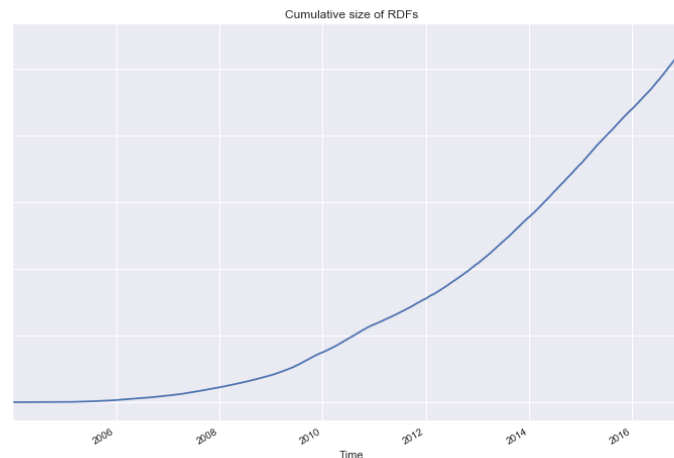
Dealing With The Data



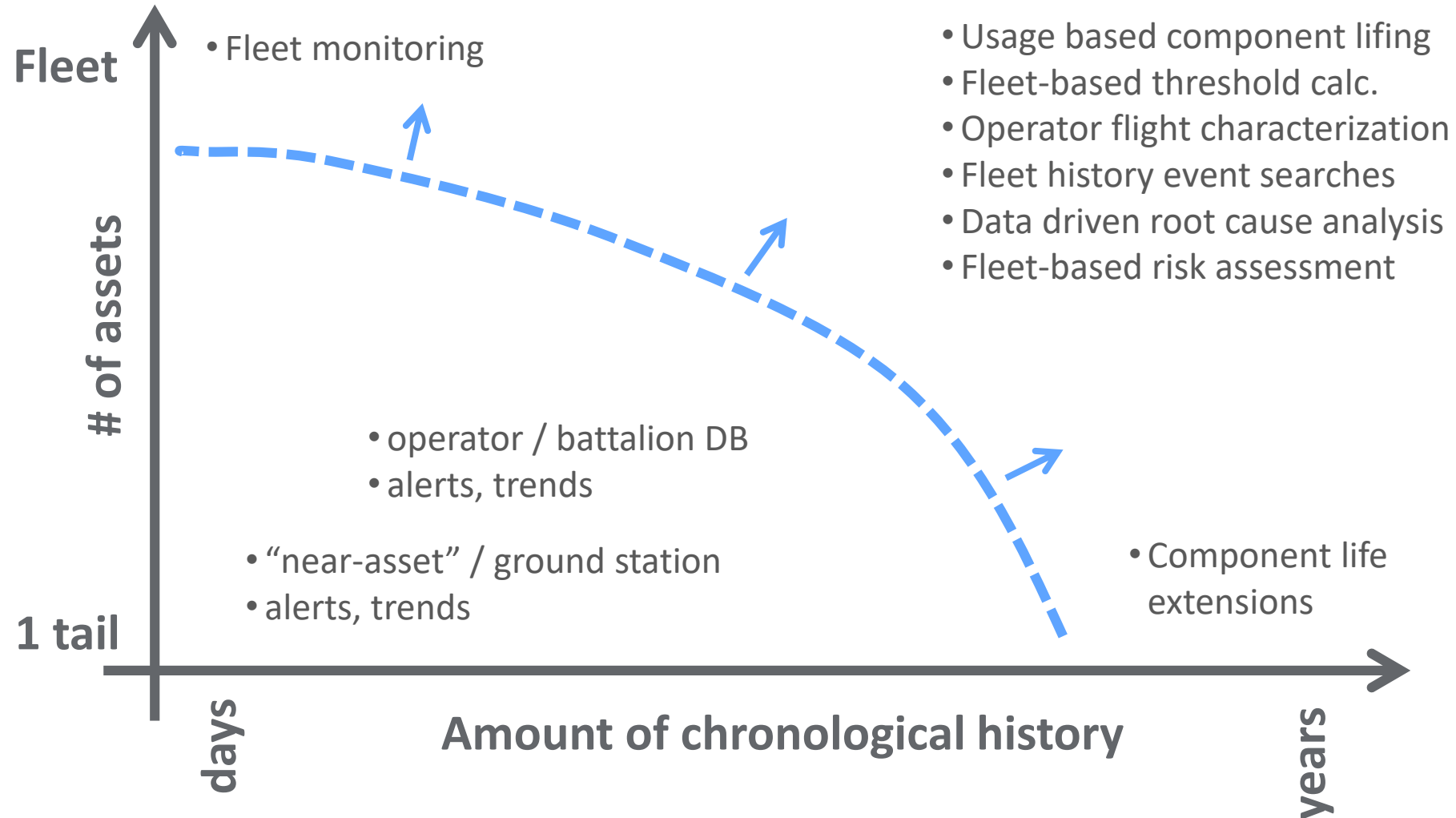
Platform Operational Data

e.g. Health & Usage Monitoring Systems (HUMS)

- Hundreds to thousands of raw parameters sampled continuously throughout operation
- Thousands of discrete event types
- Thousands of indicators calculated from raw data
- Thousands of usage metrics
- and more...

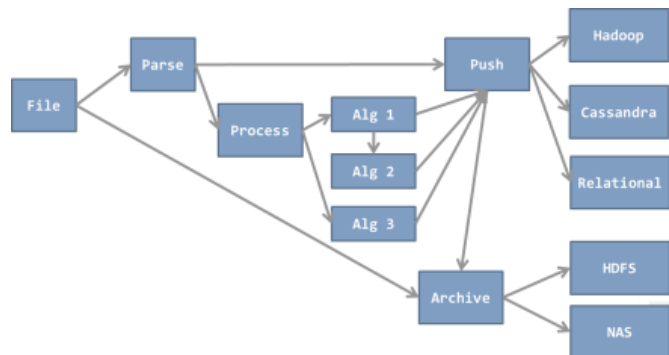


Using all of the data...

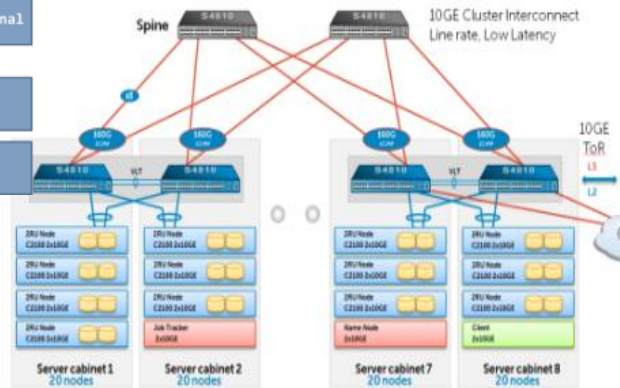


Data Problems

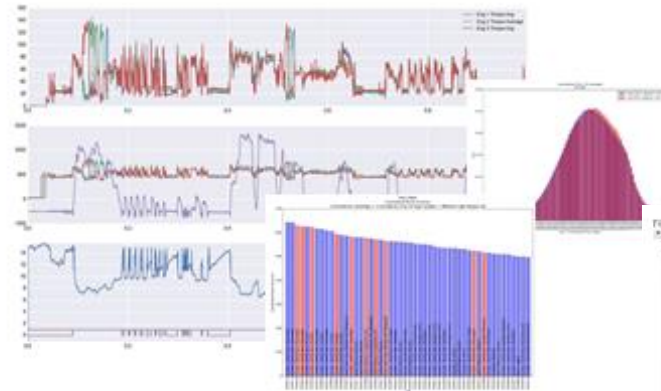
Ingest



Store



Process



Retrieve

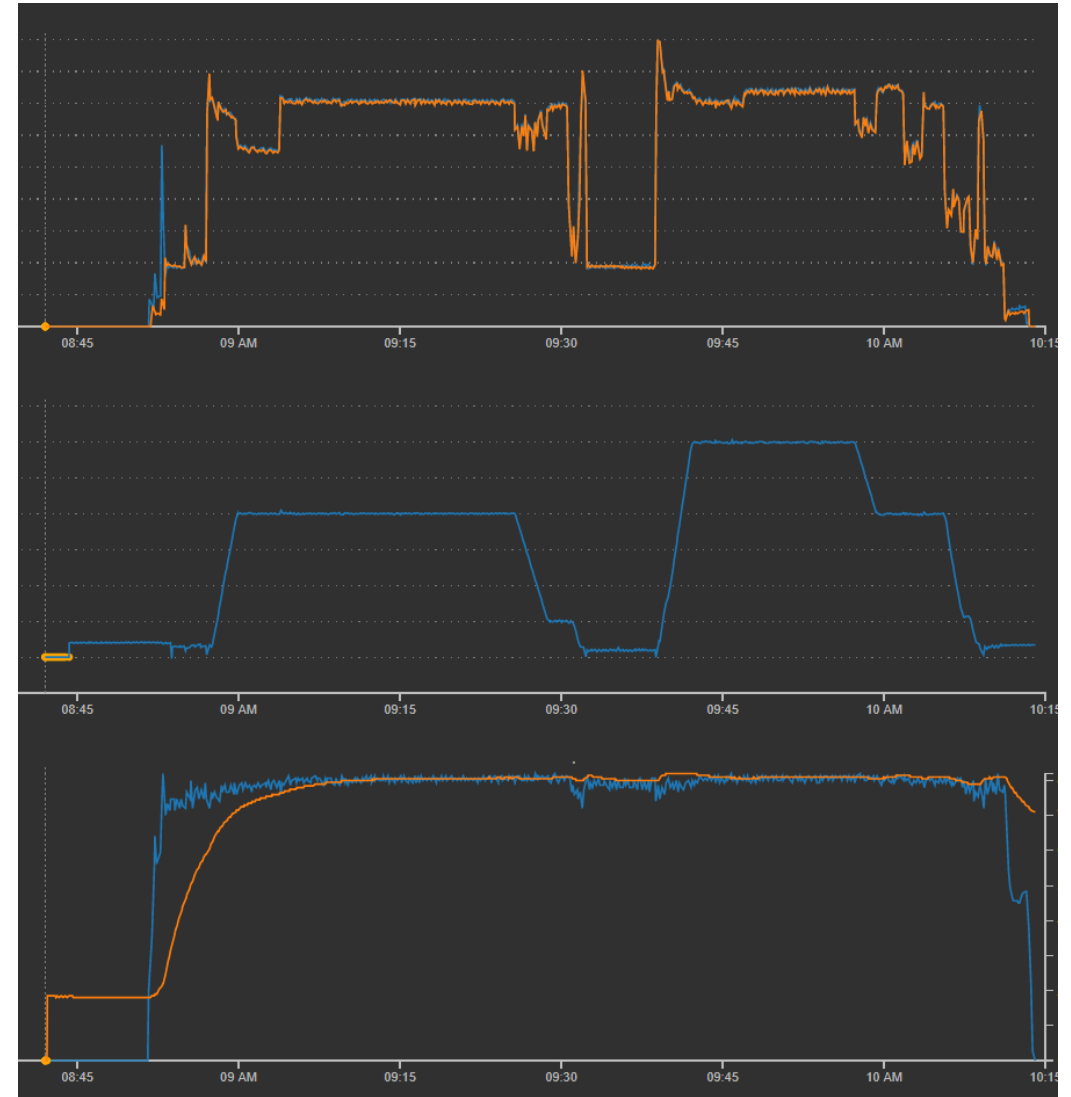
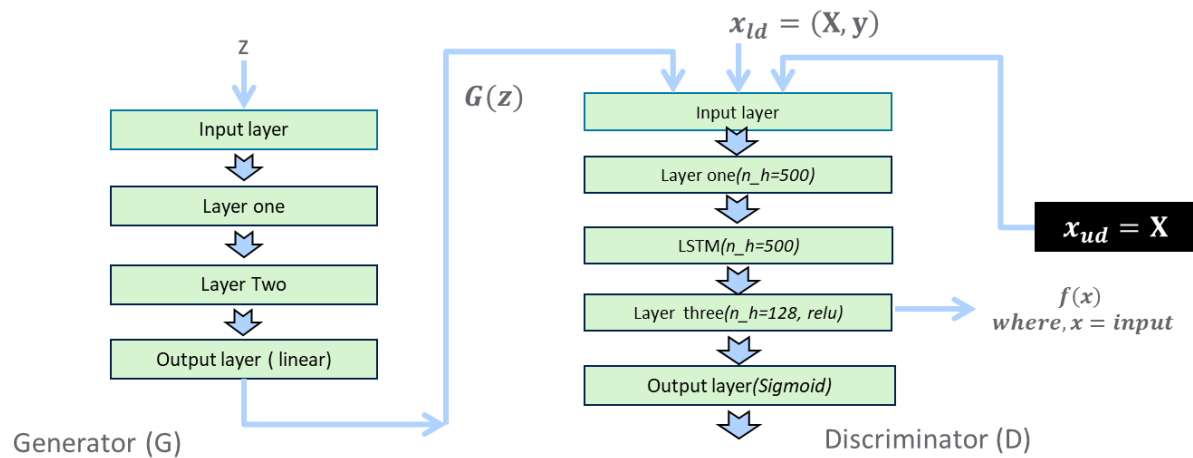


Applications Leveraging GPUs

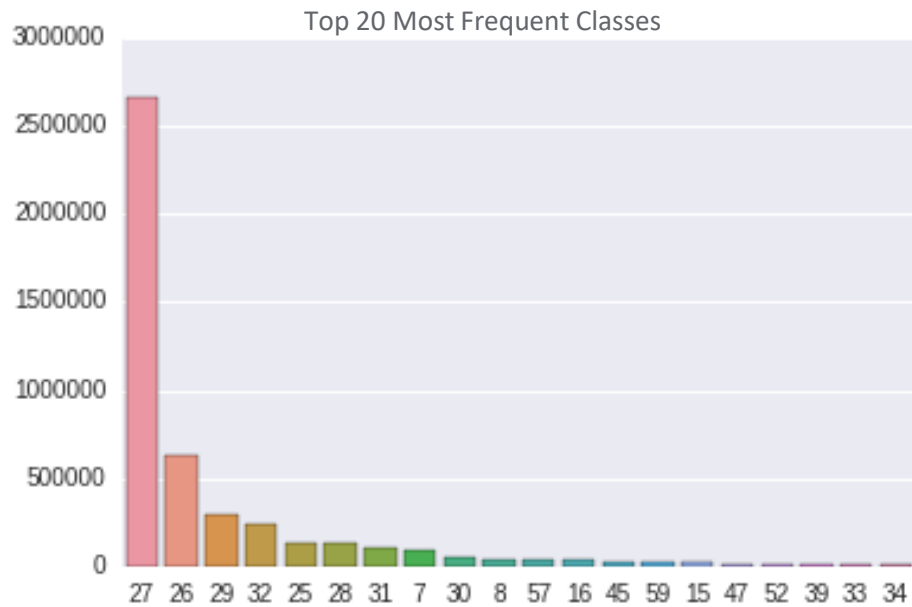


Multivariate Timeseries Data

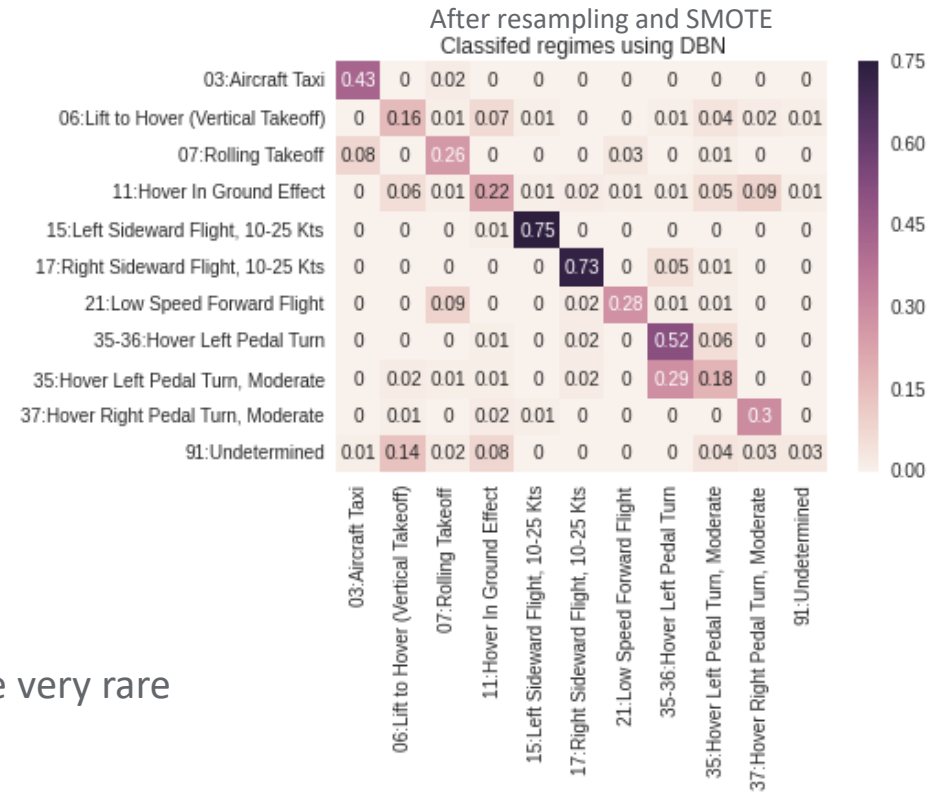
- Classification
- Anomaly Detection
- Signal reconstruction
- Virtual monitoring



Telemetry Data Classification



- Top 5 regimes encompass 90% of data, others are very rare
- Rare classes are difficult to learn



Parameter Inference and Virtual Monitoring

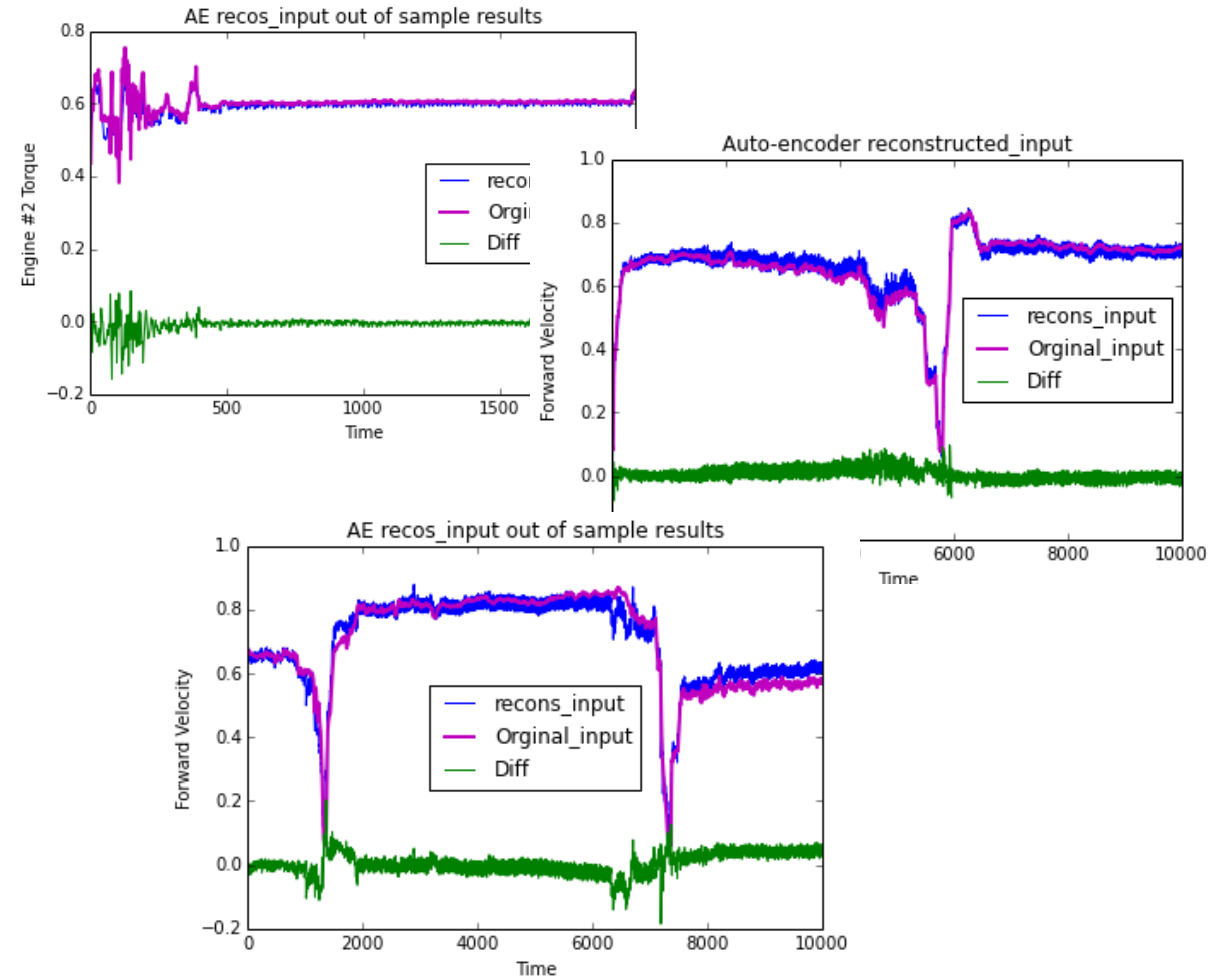
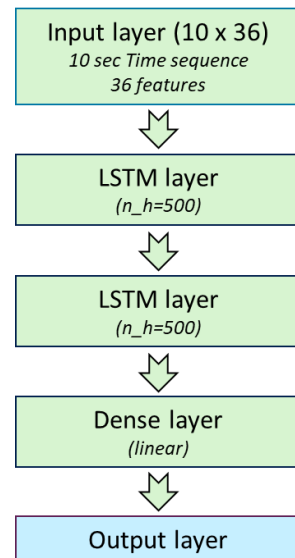
- Using deep networks to generate missing signals

Autoencoder Approach

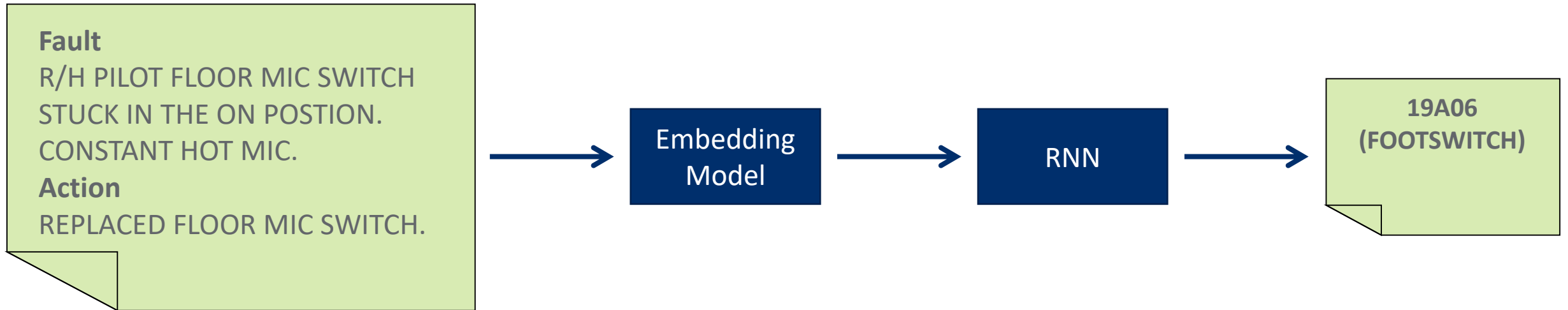
```

0 input0      1x32x32
1 conv2d     16x30x30
2 conv2d     16x28x28
3 maxpool2d  16x14x14
4 conv2d     32x12x12
5 maxpool2d  32x6x6
6 reshape    1152
7 dense      256
8 encode     40
9 dense      256
10 dense     2048
11 reshape   32x8x8
12 upscale2d 32x16x16
13 conv2d    16x18x18
14 upscale2d 16x36x36
15 conv2d    16x34x34
16 conv2d    1x32x32
17 dense     256
18 dense     32 (linear)
    
```

Sequence Modeling (RNN-LSTM) Approach



NLP For Text Classification



Fault & Action text → Maintenance code
Free form text → Malfunction code
Maintenance data → Machine summary
etc

FRACAS Code Scoring

FRACAS: Failure Reporting, Analysis, and Corrective Action System

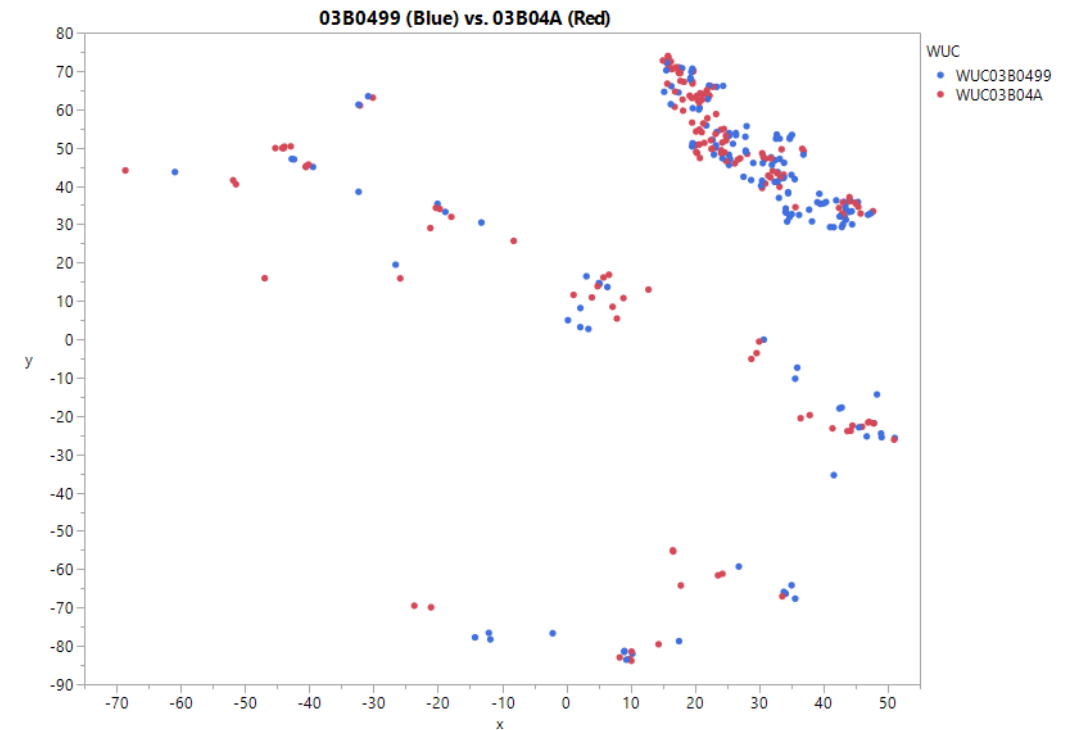
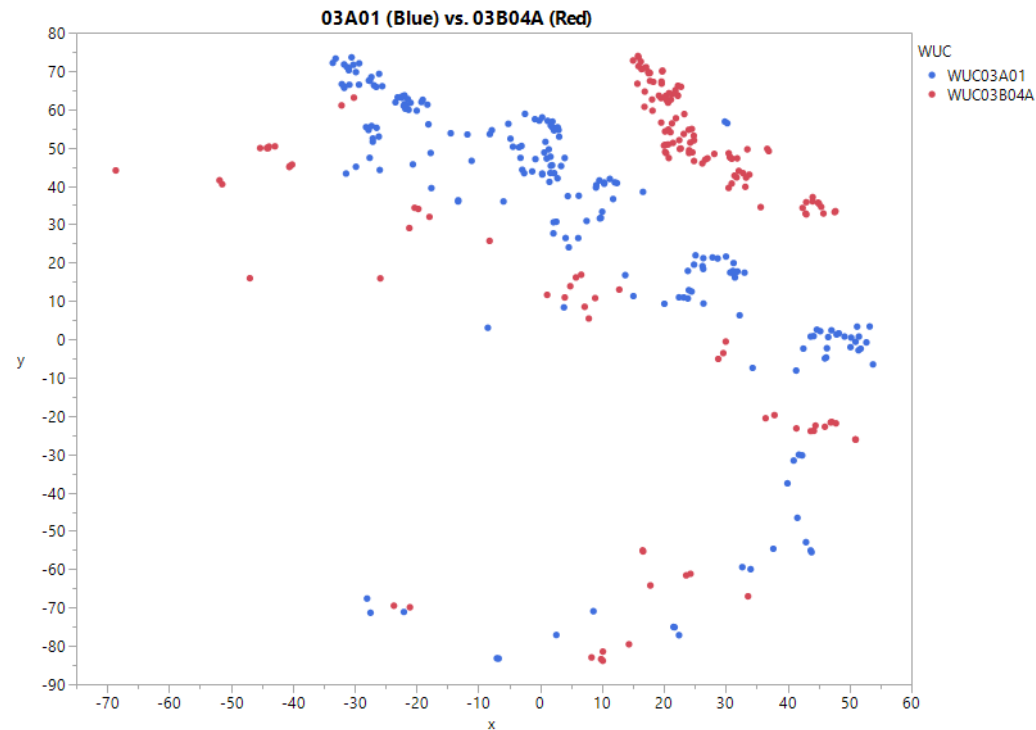
WUC: Work Unit Code

Fault	Action	→	WUC	Model Confidence	Most Indicative Words
R/H PILOT FLOOR MIC SWITCH STUCK IN THE ON POSITION. CONSTANT HOT MIC.	REPLACED FLOOR MIC SWITCH.		19A06 (FOOTSWITCH)	96.2%	<ul style="list-style-type: none">• 'MIC'• 'FLOOR'• 'HOT'• 'SWITCH'• 'STUCK'

Proportion >90% confident: 53%

FRACAS Code Scoring

tSNE showing semantic separability between two WUCs in the maintenance records



Applications to the Factory

LOCKHEED MARTIN



Factory Sustainment



Drive System

Loads Monitoring
Adv. Dynamic Load-Based Diagnostics
Drive System Diagnostic Reasoner
Oil condition & debris monitoring

Fleet Management

Usage-Based Maintenance
Condition-Based Maintenance
Maintenance-Free Operation Period

Electric Power & Wiring

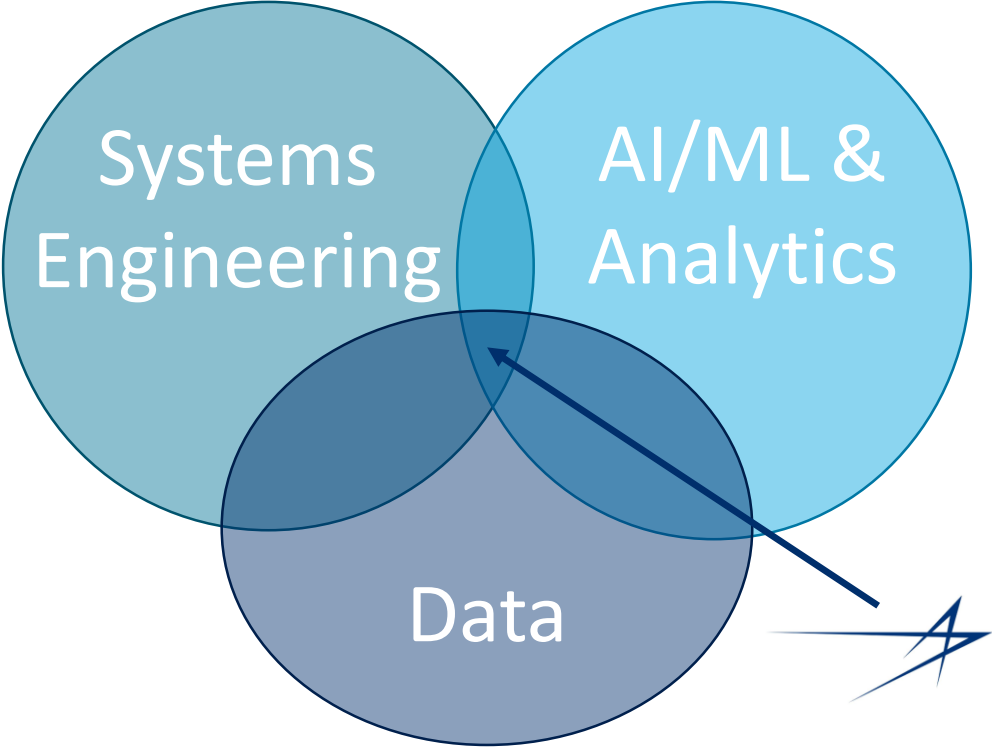
Smart solid state power
Distribution components
Wire fault detection & isolation

*Fleet Sustainment to
Factory Sustainment*

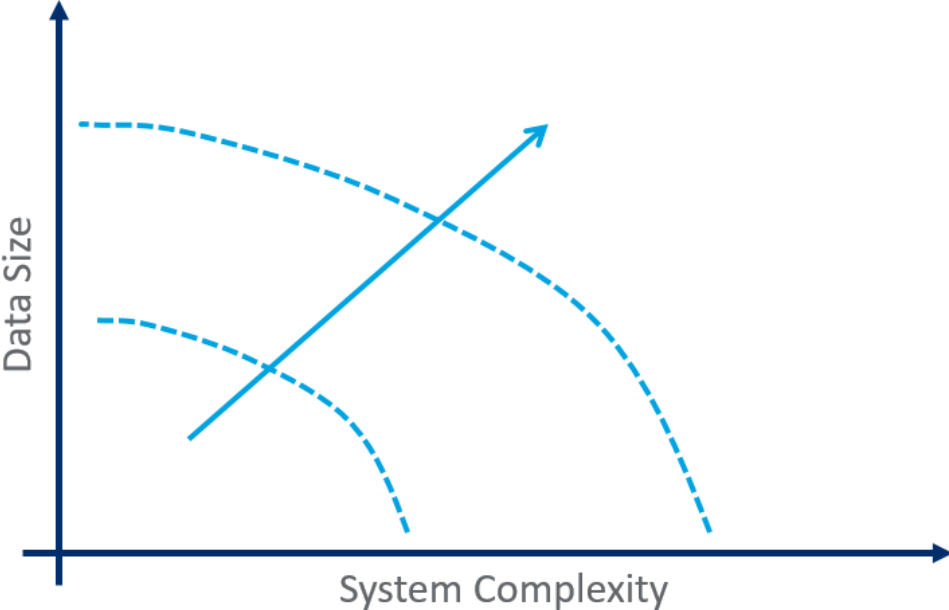
Takeaways



Takeaways



Sustainment analytics requires relevant data, informed application of analytics tools and engineering expertise.



Frontiers must be pushed and GPUs are a critical enabling technology that has allowed us to pioneer.

Takeaways



Data is Data. The challenges of maintaining Fleets of Aerospace vehicles are the same as the challenges of maintain “Fleets” of Factory Machines

Designing in high-quality contextualized data is an enabler for providing high value Predictive Asset Management Solutions.

LOCKHEED MARTIN

