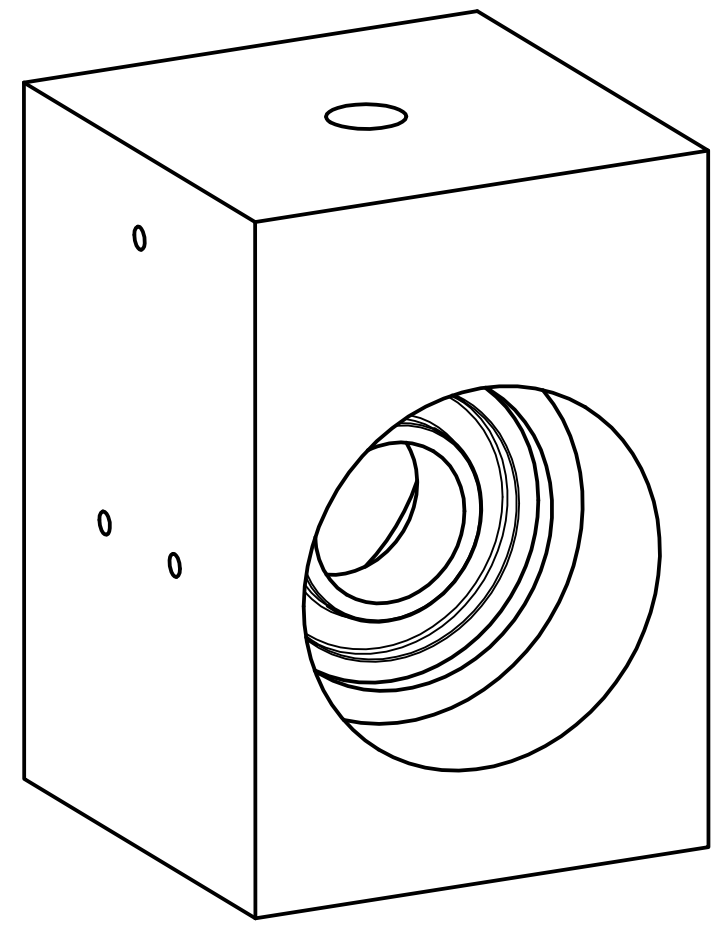
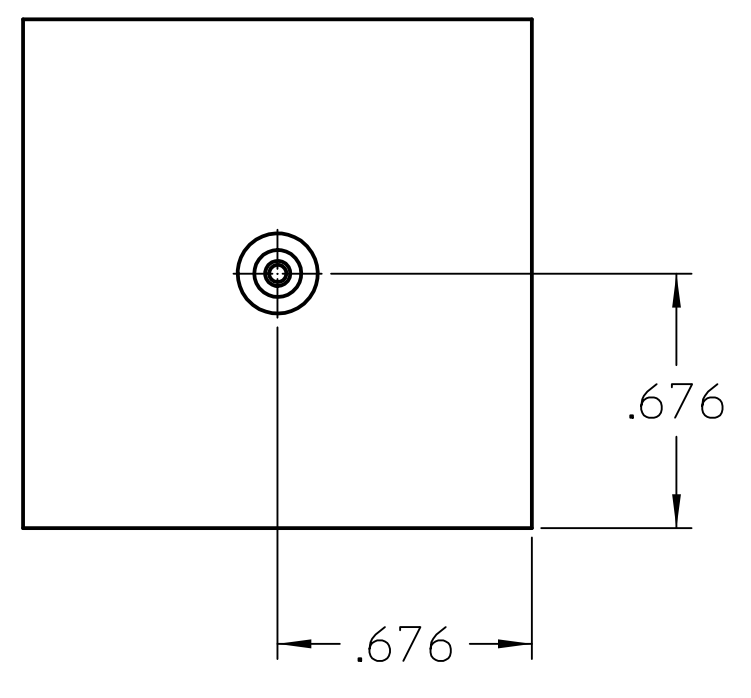


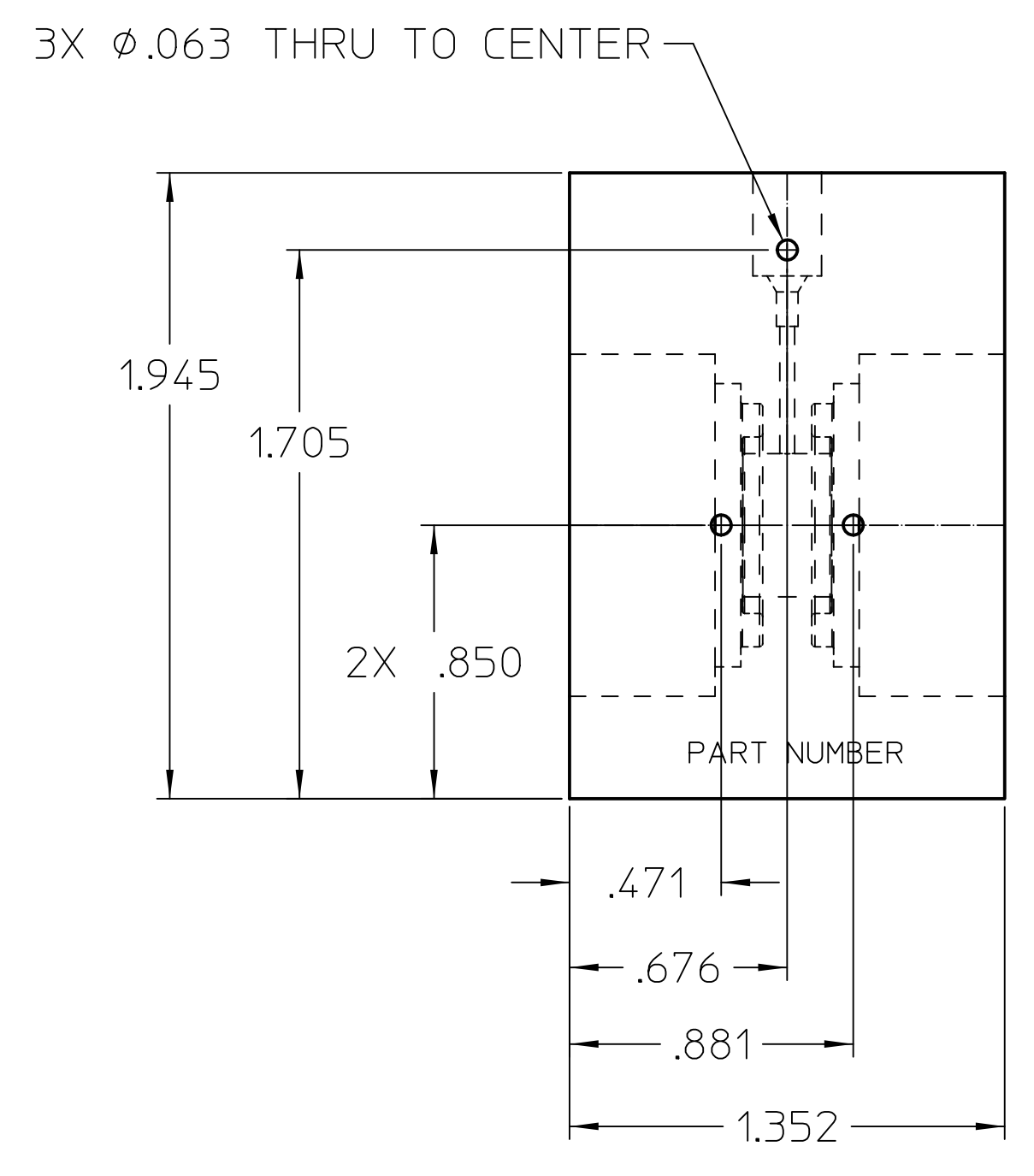
REVISIONS				
No.	ZONE	ECN	CHANGE	DATE
3	C2		ADD .067 C'BORE & OPEN C'SINK DIA	12/17/20



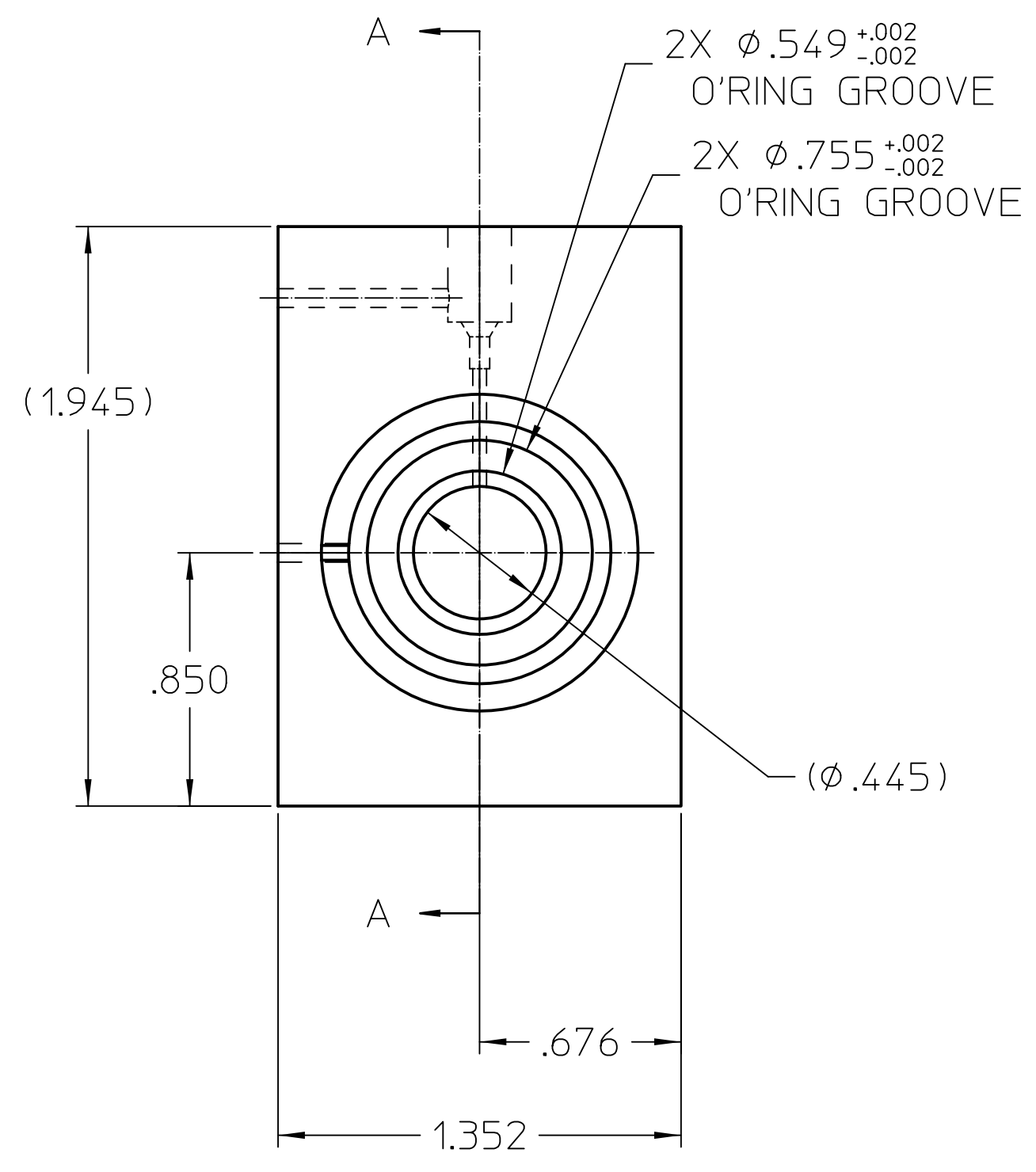
GEN1



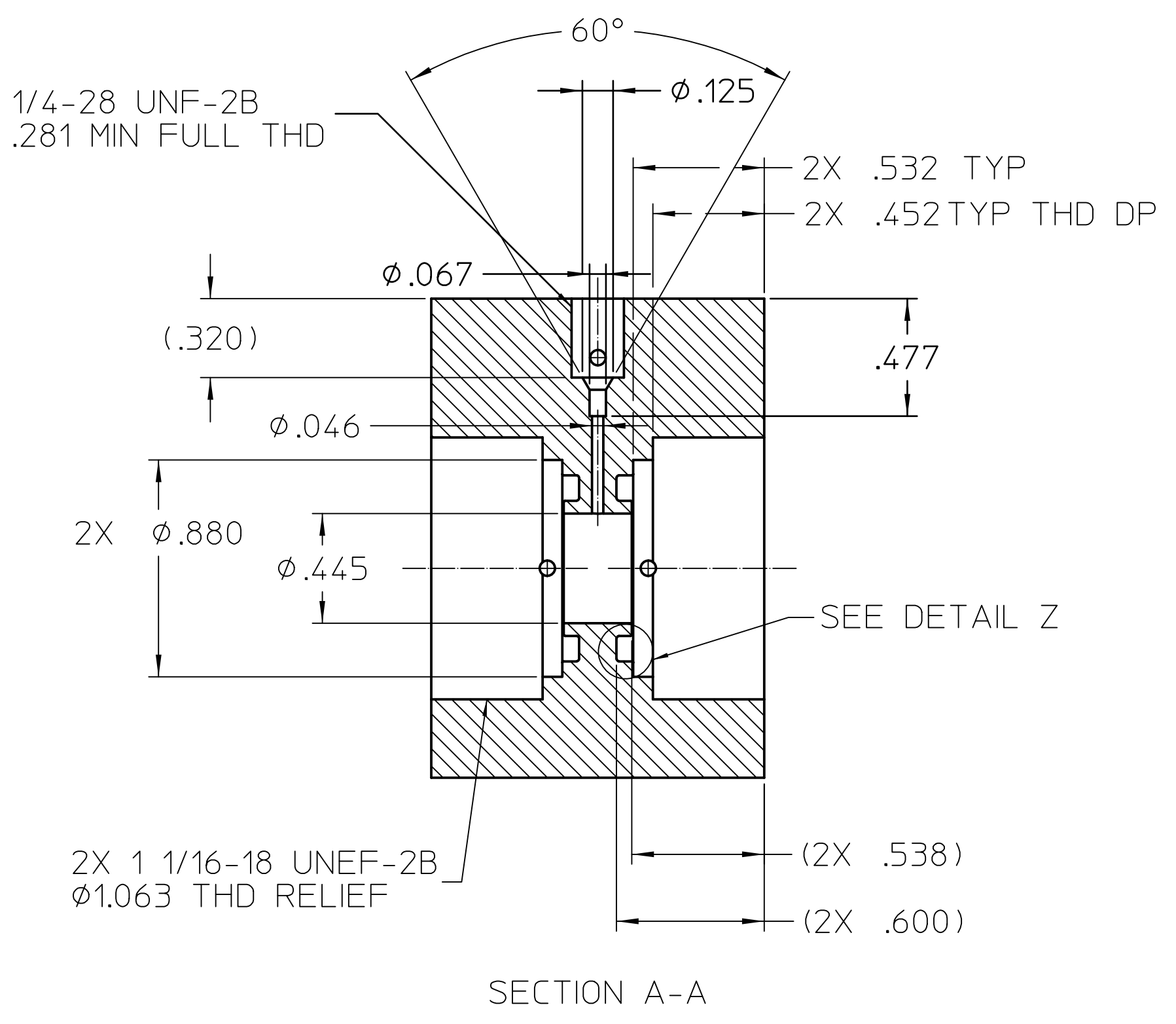
TOP1



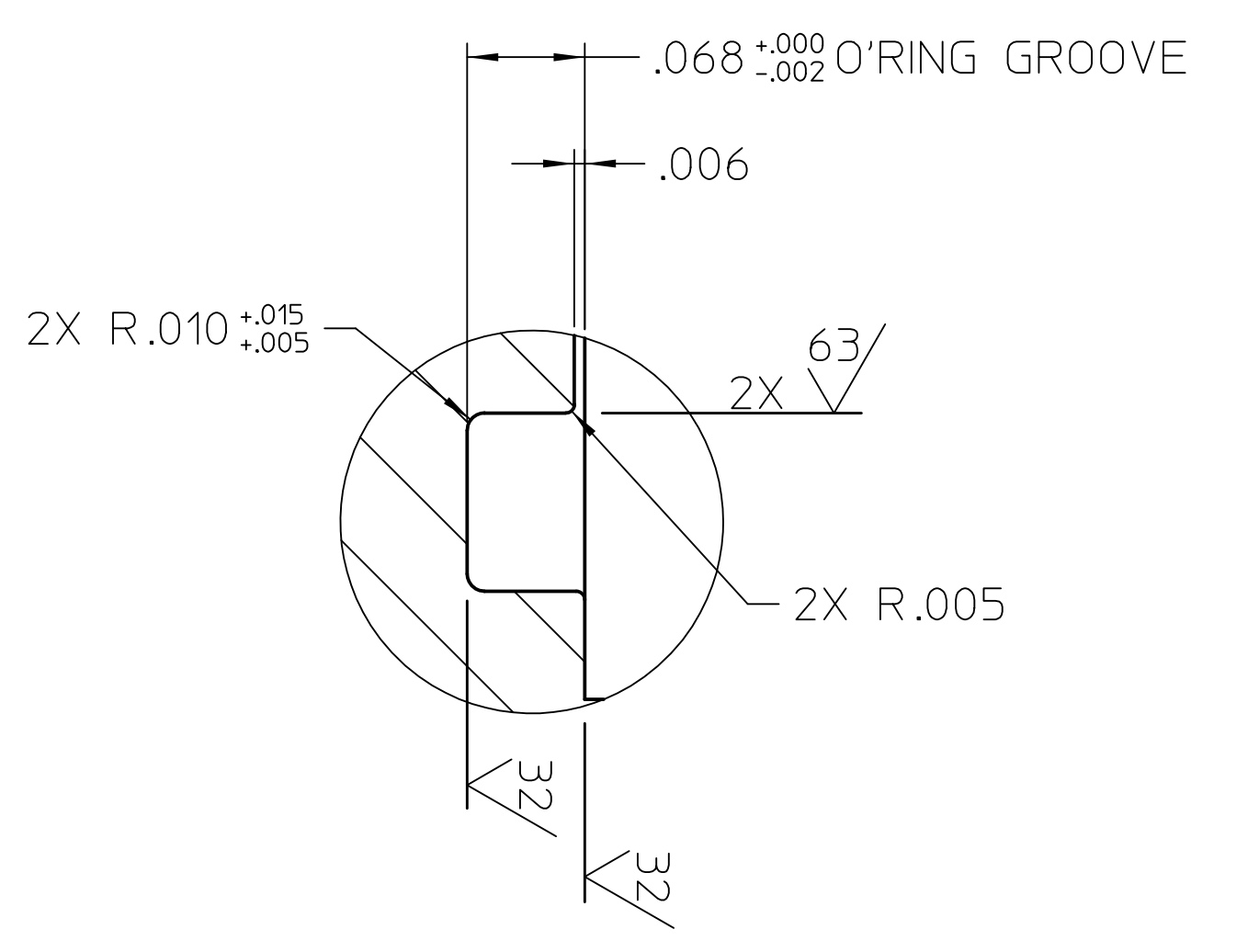
LEFT1



FRONT1



SECTION A-A



DETAIL Z  
2 PLACES  
SCALE 10:1

NOTES:  
 1. REMOVE ALL BURRS AND SHARP EDGES.  
 2. MILL PART NUMBER (INCL REV LEVEL "-X" WITH X = 1,2,3) WHERE INDICATED USING 1/8 CHARACTERS WITH A  $\sqrt{V}$  OF .01 INCHES.

MATERIAL SPECIFICATION STAINLESS STEEL, TYPE 304		DRAWING APPROVALS ENGR INVR DATE		UNLESS OTHERWISE SPECIFIED DIMENSIONS ARE IN INCHES TOLERANCES ARE: DECIMALS FRACTIONS XXX +.005 +.015 XX .01 .01 ANGLE .5		NIST National Institute of Standards and Technology U.S. Department of Commerce 100 BUREAU DRIVE GAITHERSBURG, MD 20899		CENTER FOR NEUTRON RESEARCH GATHERSBURG, MD 20899	
MODEL DATA MODEL NAME: PRESSUR_vessel_block2_ver2 CREATOR: colin DATE: 2/17/17, 4:28 PM		DRAWING DATA DATE: 12/17/20, 5:40 PM SHEETS: 1 VERSION: 3		DO NOT SCALE DRAWING		FOR: BLOCK, PRESSURE VESSEL - #2 VER 2		REV: 3	
DRAWN BY: colin		DATE: 12/17/20, 5:40 PM		ENGINEER: Colin Wrenn PHONE NUMBER: (301) 975-5142 EMAIL ADDRESS: colin.wrenn@nist.gov		SCALE: 2:1		Dwg No: 014-2724	
THIRD ANGLE PROJECTION		LAST UPDATE BY: colin DATE: 1/5/21, 2:18 PM		RELEASE DATE:		SHEET: 1 of 1		DIM. & TOL. PER ANSI Y14.5M-1982	