

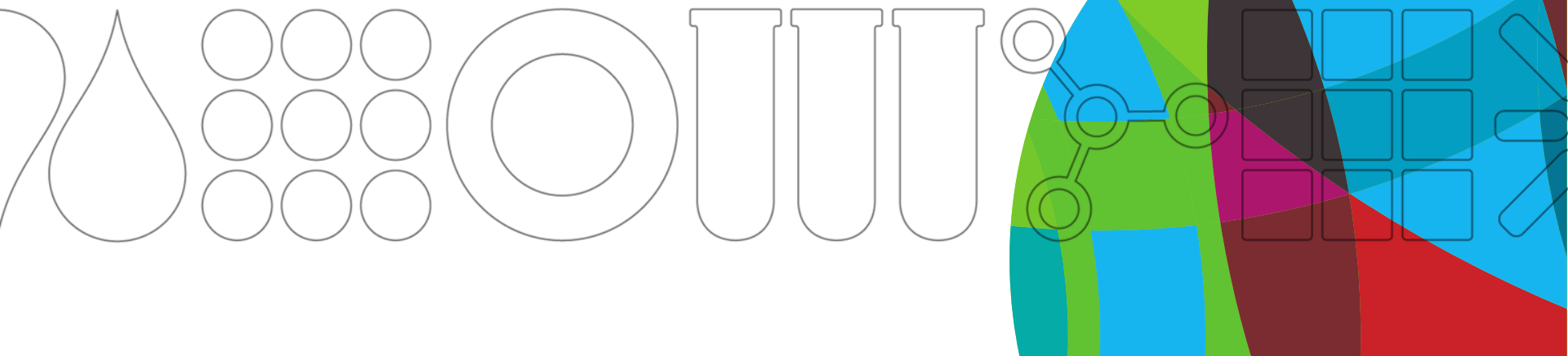


Chemical Analysis and Databases in the Paint Industry

Rich Simon

Global Analytical Network

July 19th, 2016



Agenda



- Overview of Valspar and Analytical/Materials Science
- Paint Analysis in the Industry
- Example Analysis—Pyrolysis GC/MS of Latex Paint
- New Databases
- Color Databases
- Questions and Contact Information

Valspar Coatings

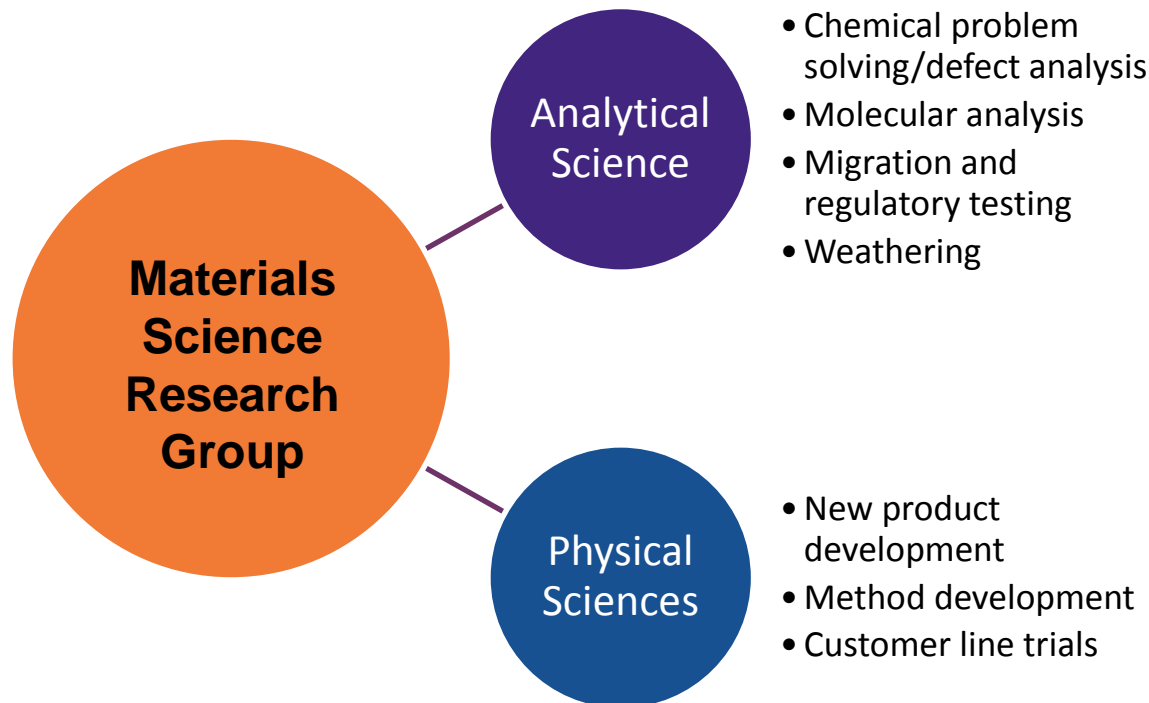
valspar



Materials Science/Analytical

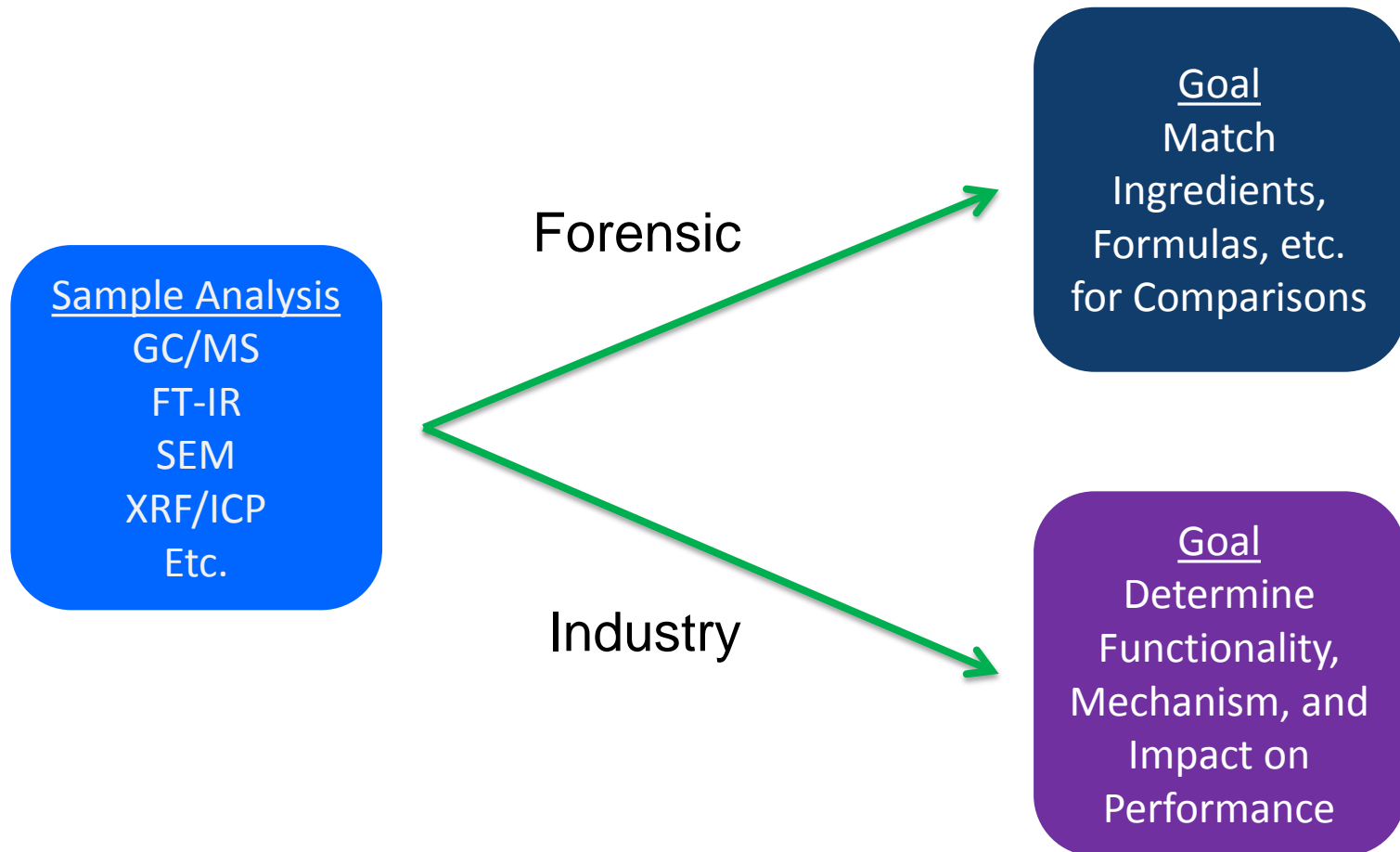
Objectives: Clarify working mechanisms of coatings' performance that provides:

- Design guidelines for continuous product improvements,
- Better performance protocols, and
- Root cause solutions of issues.



Paint Analysis in the Industry

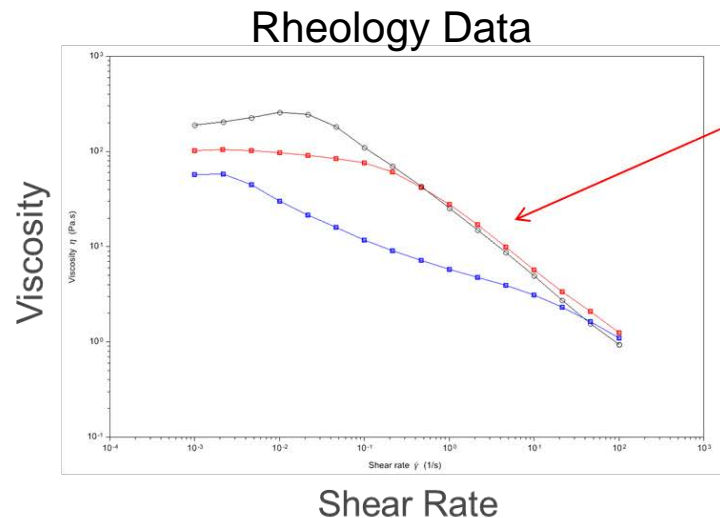
- We do the same tests but for different reasons.
- Therefore databases are built for different goals.



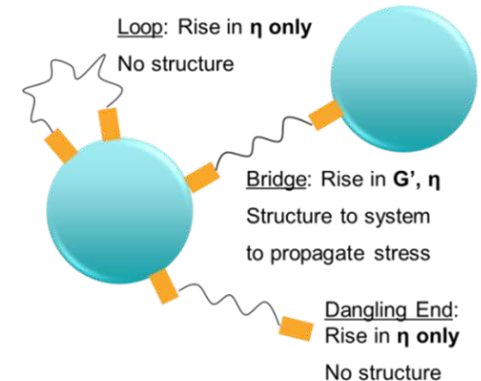
Mechanisms of Interaction

valspar

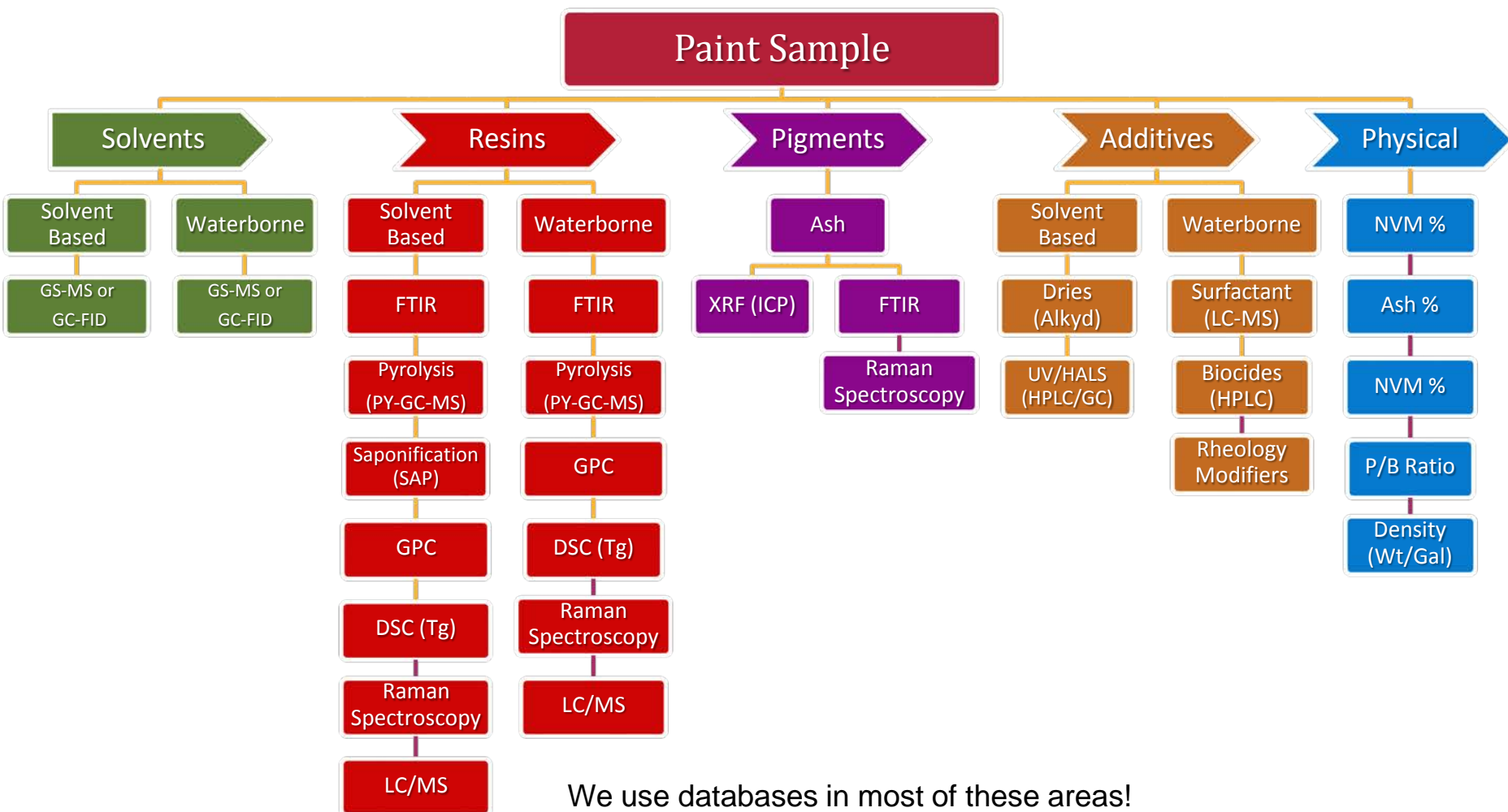
- Ultimately our goal is to get here!
- Determining mechanisms which impact performance
- Need to ID materials before you can do this.



Flow, Leveling, and Sag profiles can be identified in a rheometer experiment



Paint Analysis Overview



We use databases in most of these areas!
Areas are further subdivided from raw material for more details
(i.e. resin monomers, surfactant/rheology modifier end groups, etc.)

Databases at Valspar



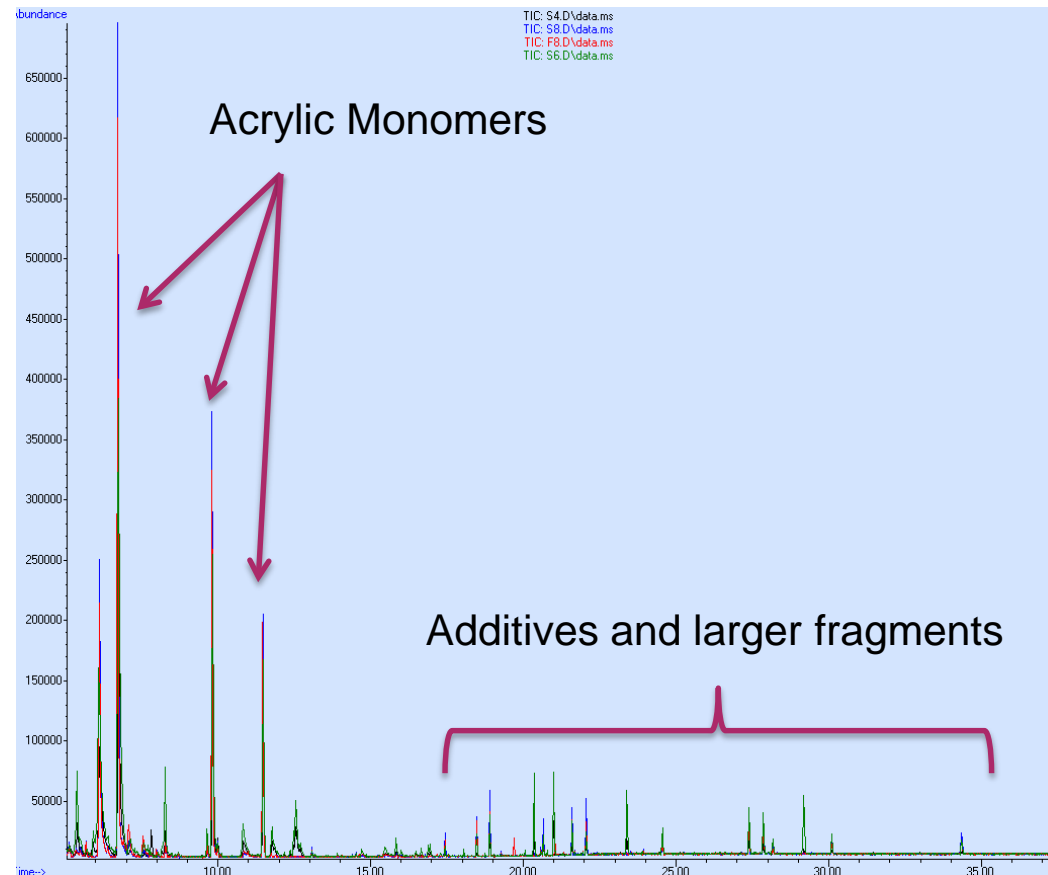
- Numerous types of databases are used:
 - Some commercially available
 - Coatings Technology Library—FSCT* (FT-IR)
 - NIST GC/MSD Library
 - Many custom developed in-house
 - Also use color databases
- Focus on functionality and not formulations (i.e. paints)
 - Reverse Engineering/Competitive
 - Cost Information
 - IP/Patent infringement
 - Problem Solving/Customer/Internal R&D
 - General Technology
 - Failure mechanisms for coatings
 - Regulatory
 - VOC
 - Packaging Oligomers

*Federation of Societies for Coatings Technology

Competitive Latex Paint Analysis

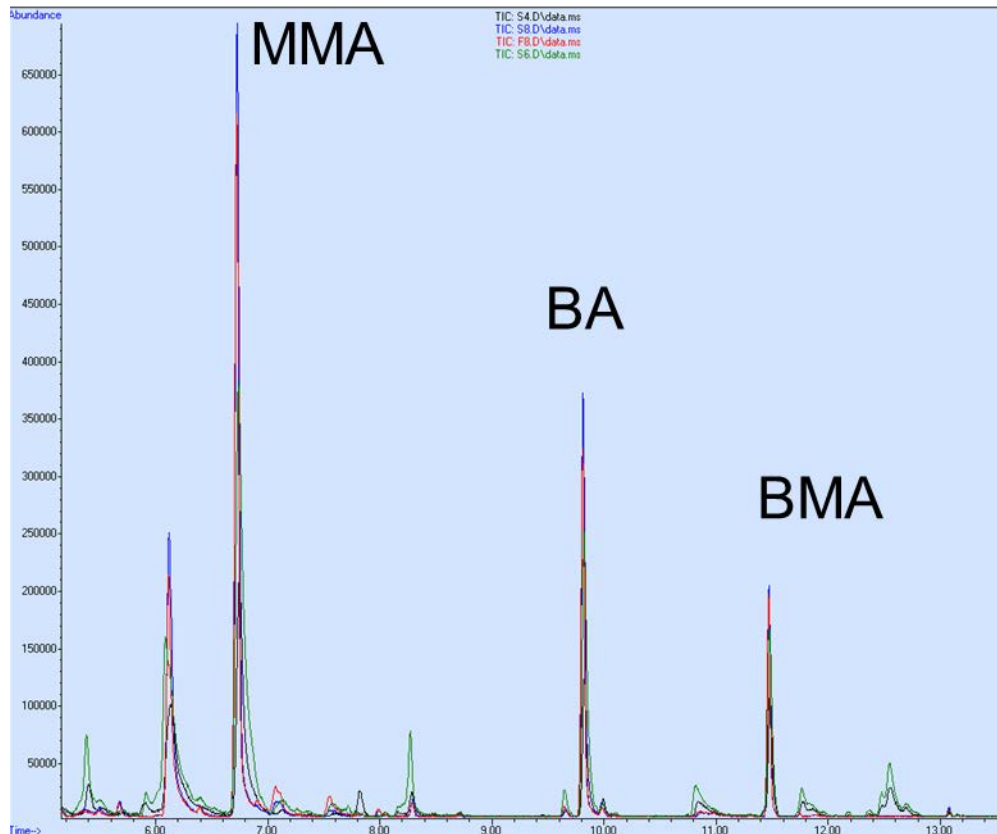
- 4 Different Competitive Latex Paints Analyzed
- What is Valspar interested in?
 - Cost
 - Performance
 - IP protection

Pyrolysis GC/MS



Latex Paint Analysis

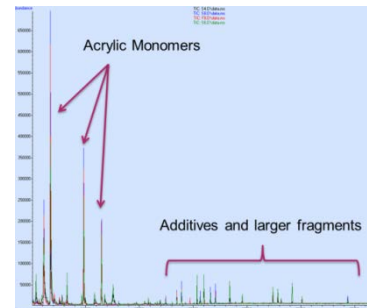
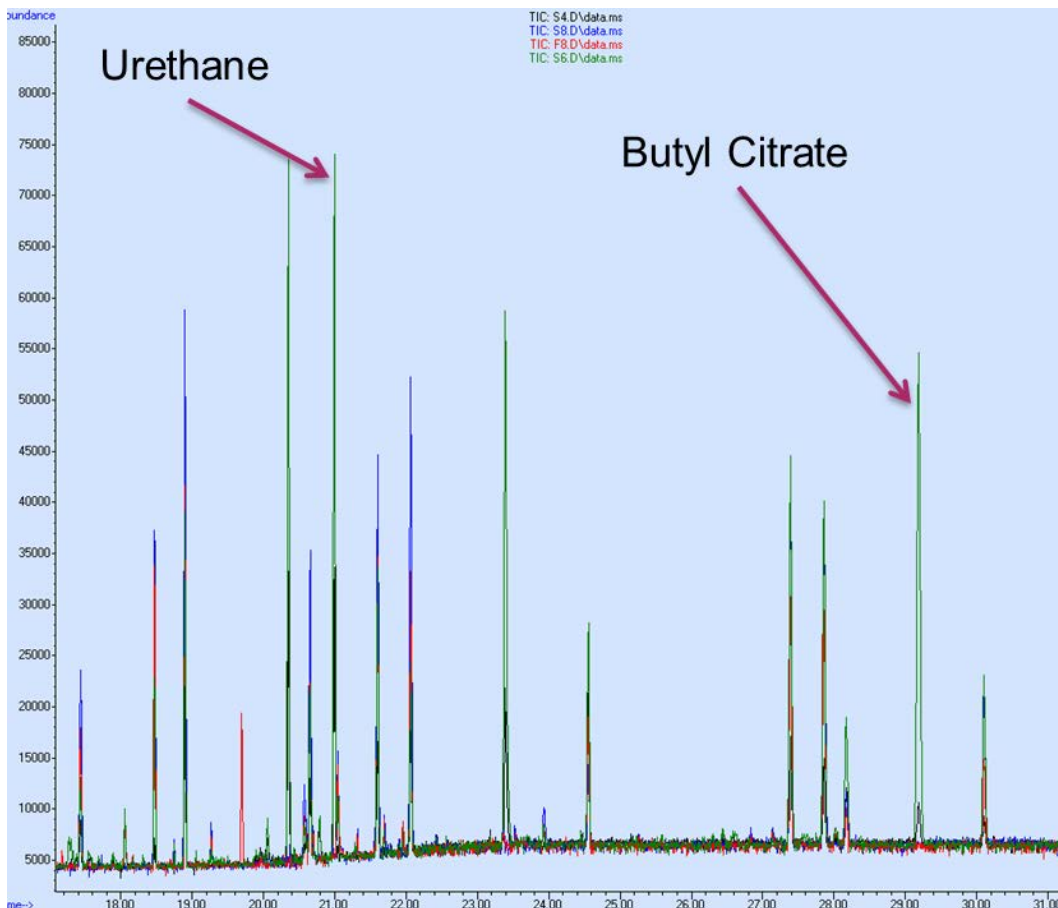
- Same Acrylic Monomers in the same ratio
- Paint manufacturers use commodity acrylics



- **Database used for the following:**
 - **Acrylic Monomer ID (EI MSD)**
 - **Latex type**
 - Based on ratio of monomers
 - Link back to manufacturers
 - ~300 Latex types in database

Latex Paint Analysis

- Additives area shows bigger differences
- Databases used for identification of additive fragments (EI MS)



- **Urethane**
 - Indicates presence of HEUR*
 - Added for flow and application performance
 - Lack of HEUR means HASE** or Cellulosic most likely present
- **Butyl Citrate**
 - Coalescing agent
 - Helps polymer diffusion

*Hydrophobically Modified Ethylene Oxide Urethane Rheology Modifier (HEUR)

**Hydrophobically Modified Alkali Swellable Emulsions (HASE)

New Databases

- LC/MS/MS (RT, Mass, Fragmentation)
 - Surfactants
 - Organic Pigments/Colorants
 - Additives
 - Oligomers
 - Packaging Regulatory (<1000 daltons)
- Raman
 - Organic Pigments
 - Additives
- Solubility Parameters
 - Compatibility of materials
- Continuous updates to existing

LC/MS/MS

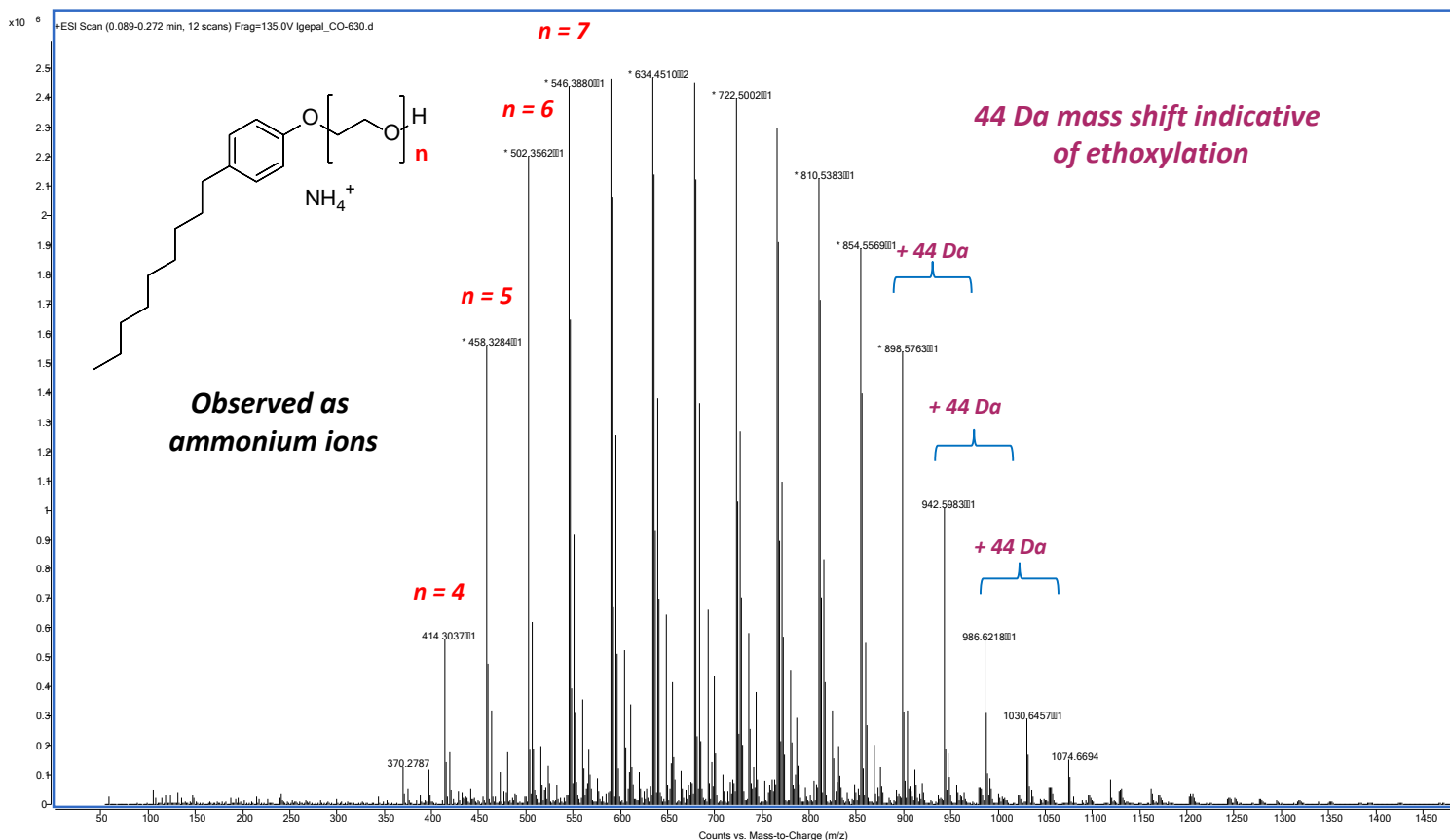


Confocal Raman Microscope



Surfactant Analysis by LC/MS/MS: *Identification of Nonylphenol Ethoxylate*

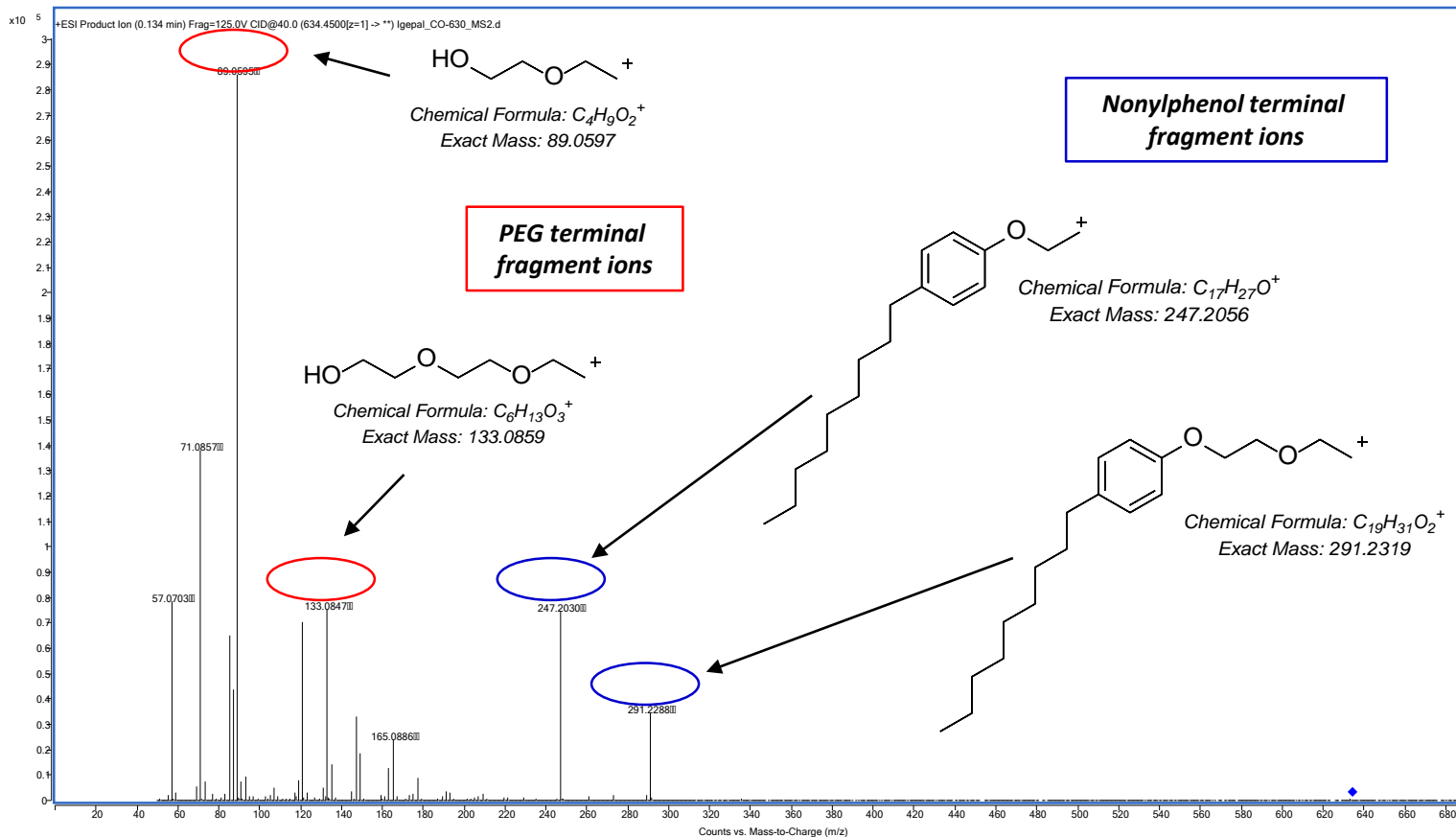
Total Ion Mass Spectrum – Positive Ion Mode



Surfactant Analysis by LC/MS/MS: *Identification of Nonylphenol Ethoxylate*

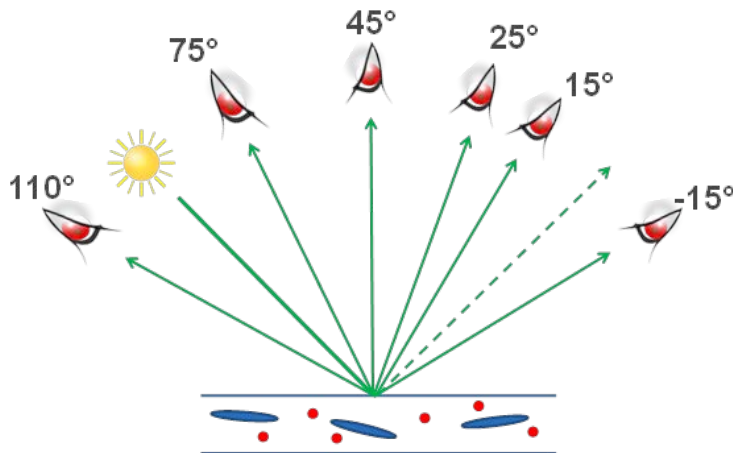
End group and ethoxylation chain size help understand interactions

Tandem Mass Spectrum – Fragmentation of Nonylphenol Ethoxylate, $n = 9$



Color Databases

- Color Databases are used for color matching (refinish)
 - Spectrophotometer (Visible Spectrum between 400 – 700 nm)
 - Multi-angle stored. ~15k Colors in database. Also stored as CIELAB.
 - Coarseness for effect pigments
 - Also gather make, model, year, part of car taken, etc.
- Variation can be significant and needs to be known
 - Different OEM manufacturers/Different chemistry/technology
 - Variations in raw materials
 - Age/environmental conditions of the vehicle



Questions



- How can we help?
- Contact Information:
 - Rich Simon rsimon@valspar.com 612-375-7388