

# SARS-CoV-2 Wastewater Surveillance and Public Health Applications in Houston, TX

Presented by:

**Lauren Stadler, PhD**

Assistant Professor, Civil and Environmental Engineering, Rice University

**Loren Hopkins, PhD**

Chief Environmental Science Officer

Bureau Chief Community and Children's Environmental Health

Houston Health Department

DHS/NIST Workshop  
Data Reporting and Analytics  
June 15, 2021



# Collaborative Team



**Houston Health Department:** Loren Hopkins, PhD, Lilian Mojica, Rebecca Schneider



**Houston Water – Wastewater Operations:** Carol LaBreche, PE, Walid Samarneh, PE, Paul Zappi, PE, Rae Mills, PE



**Rice University:** Lauren Stadler, PhD, Kathy Ensor, PhD, Phil Bedient, PhD, Roberto Bertolusso, PhD, Todd Treangen, PhD, Camille McCall, PhD, Esther Lou, Nick Sapoval



**TAILOR Molecular Virology and Microbiology, Baylor College of Medicine:** Anthony Maresso, PhD, Tony Piedra, MD, Viasanthi Avadhanula, PhD, Austen Terwilliger, PhD, Justin Clark, PhD, Haroldo de Santos Hernandez



# Acknowledgements



**Houston Water – Wastewater Operations:** Rae Mills, Pedro Munive, Paul Zappi, Nguyen Duc, Emmuel Toliver

**Houston Water – Wastewater operations- Lift stations:** Richard Bellinger, Trevor Herpaul, David Herbert

**Houston Water – Regulatory Compliance:** Walid Samarneh, Carol LaBreche, Daniel Chee, James Nguyen, Jeffrey Farrell, Dennis Nguyen, Jiaher Tian, Rita Hernandez, Yonatan Rodriguez, Abid Ali, James Gilleland, Crispulo Mallillin, JC Moore, Khoa Nguyen, Nadeem Rahan, Mohammad Siddiqui

**Houston Health Department:** Loren Hopkins, Braulio Garcia, Courtney Hundley, Jeremy Rangel, Rebecca Schneider, Kelsey Caton, Kendra Davis, Francisca Ruby-German, Ruochen Liu, Lilian Mojica

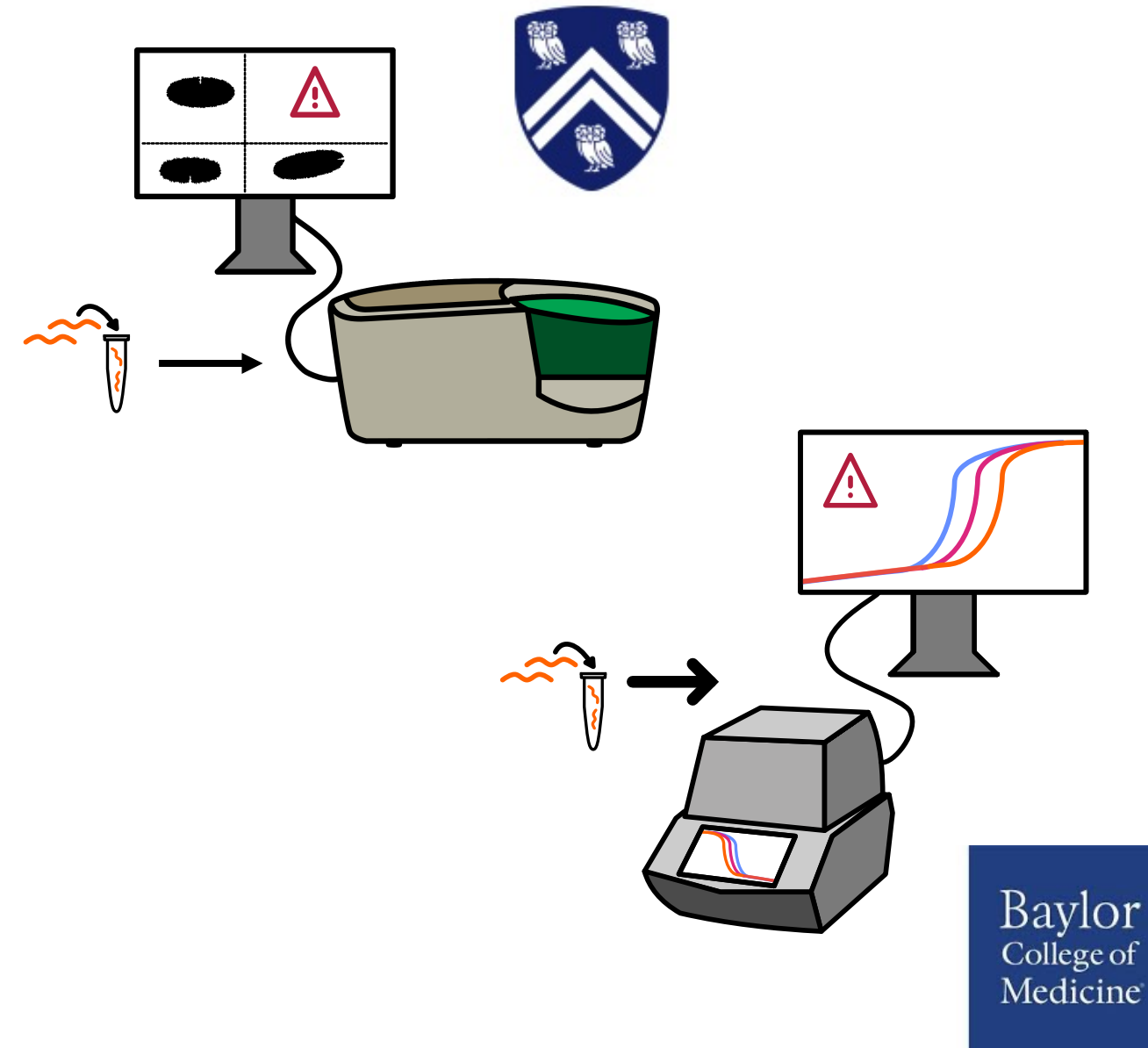
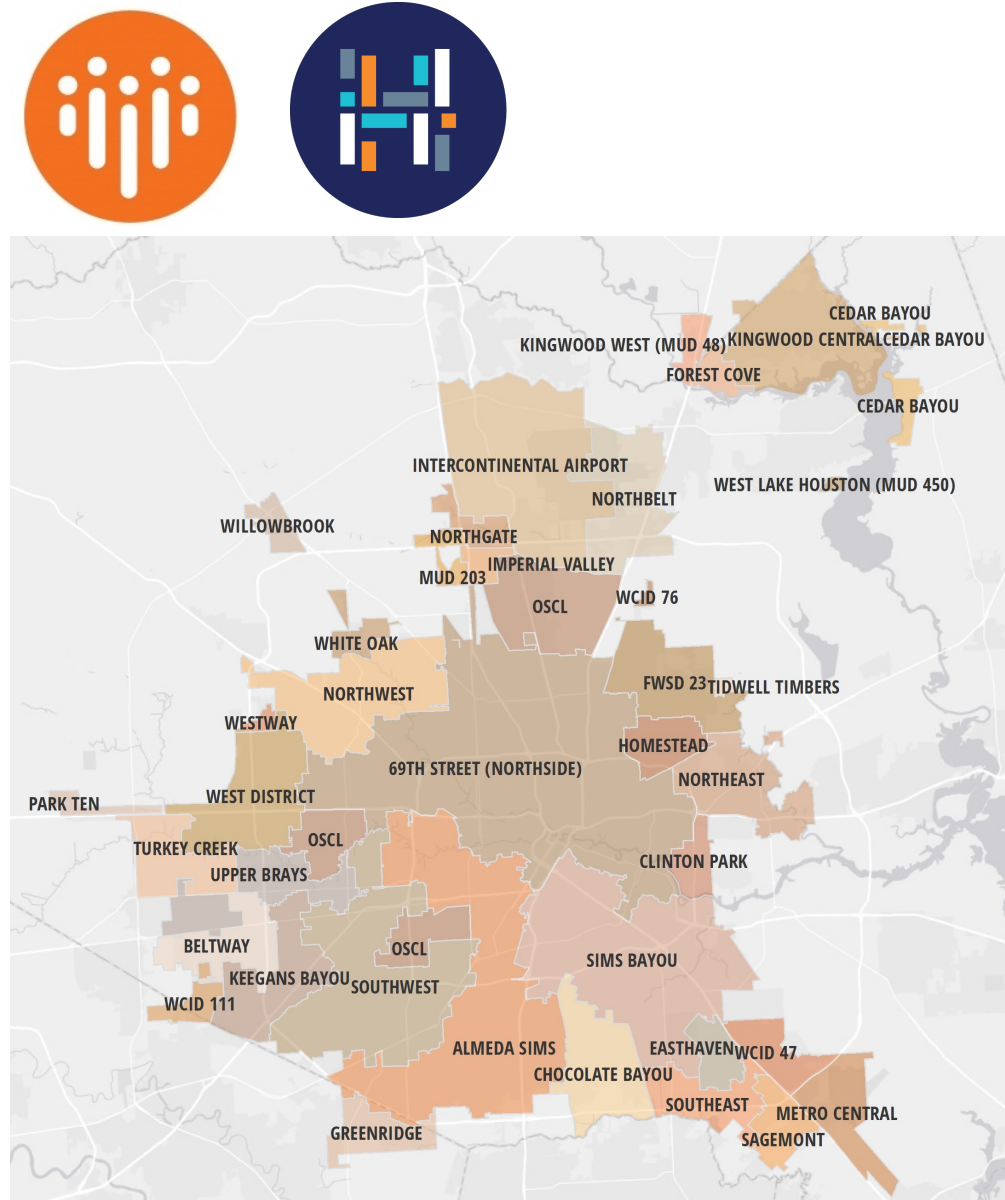
**Rice University:** Lauren Bauhs, Kyle Palmer, Madeline Wolken, Kristina Cibor, Prashant Kalvapalle, Camille McCall, PhD, Zach LaTurner, Esther Lou, Pavan Raja, PhD, Russell Carlson-Stadler, Whitney Rich, Kathy Ensor, PhD, Roberto Bertolusso, PhD, Lauren Stadler, PhD

**Baylor College of Medicine:** Anthony Maresso, PhD, Tony Piedra, MD, Viasanthi Avadhanula, PhD, Austen Terwilliger, PhD, Justin Clark, PhD, Haroldo de Santos Hernandez



# Process Overview

24-hour composite influent/wastewater samples are collected from **39** wastewater treatment plants (serving 2.3M+), **51** schools, **25** congregate living facilities (nursing homes, homeless shelters, jail), and **60** lift stations each week

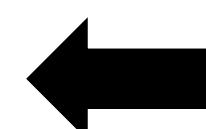


SARS-CoV-2 is quantified in replicate samples in two independent laboratories (Rice and Baylor).

Variant tracking performed using targeted assays and SARS-CoV-2 genome sequencing.

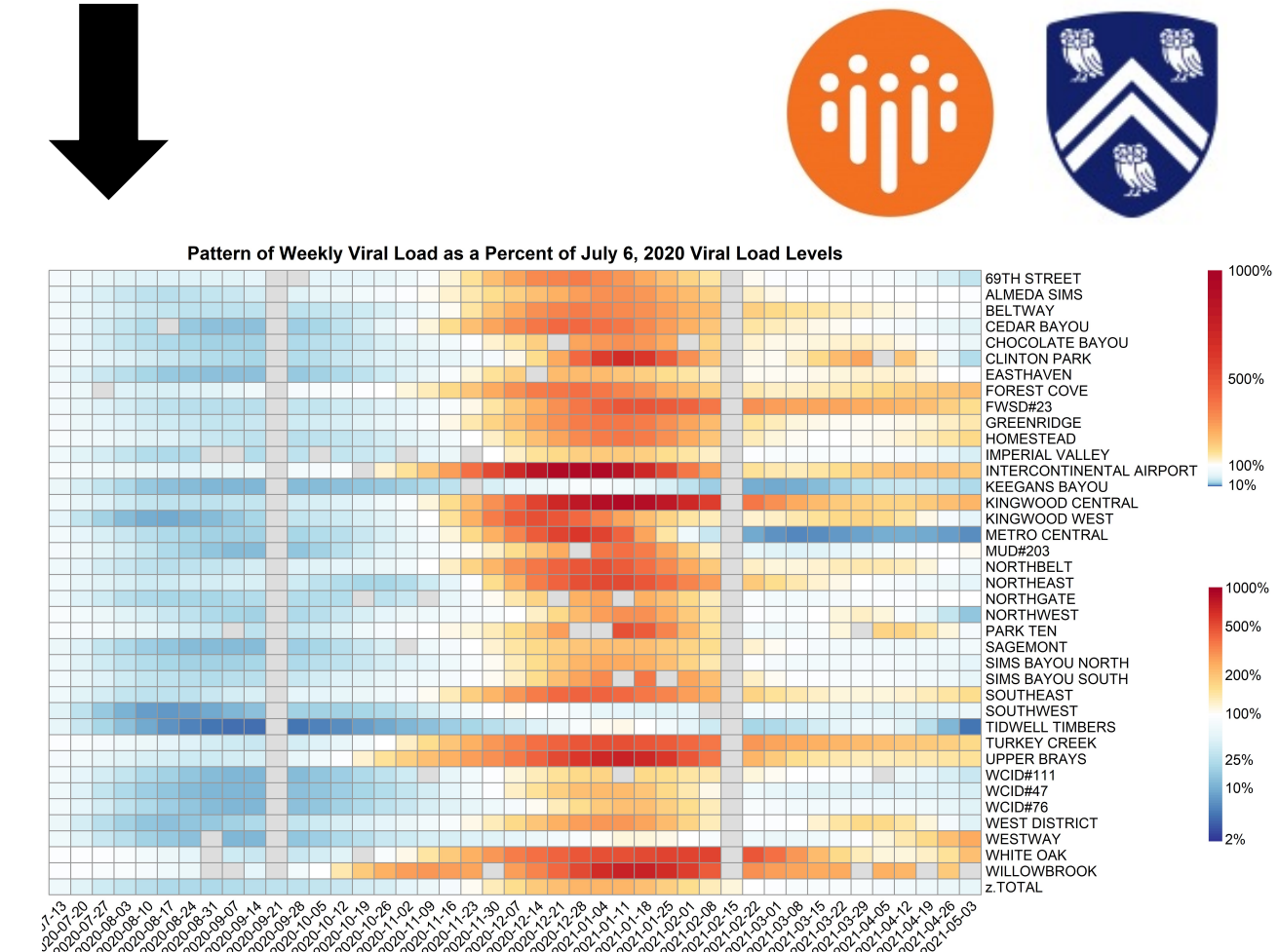


Health department uses wastewater data in cluster analysis to prioritize interventions at zip-code level



Raw data is input into statistical models that identify geographic areas of concern with significant increases in wastewater virus concentration.

Sites with putative variants of concern present are identified and confirmation is pursued via sequencing of PCR-positive clinical samples.

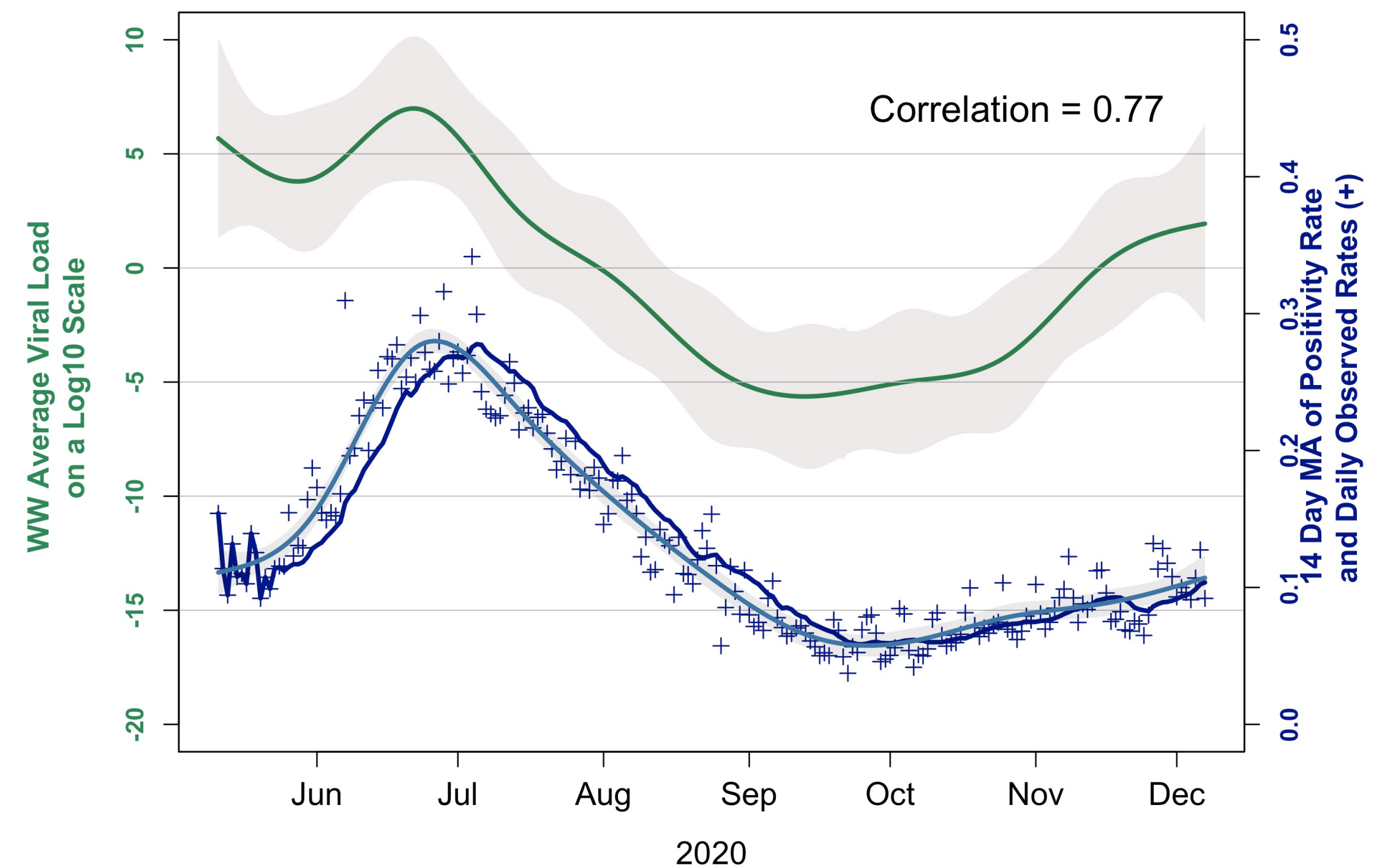


## Statistical Analysis

- **Manage** complexities of compiling data from one or two labs
- **Communicate** viral load levels
  - Levels as a percent of the July 6, 2020 viral load
  - Percent one-week change of estimated levels
- **Translate** to the zip code level
- Continue to refine **prediction** of **prevalence** in Houston

## SARS-CoV-2 in Wastewater is an Early Indicator of Observed Clinical Case Count

Wastewater Viral Load Trend and Clinical Positivity Rate  
16 WWTP: 5/11/20 through 12/7/20

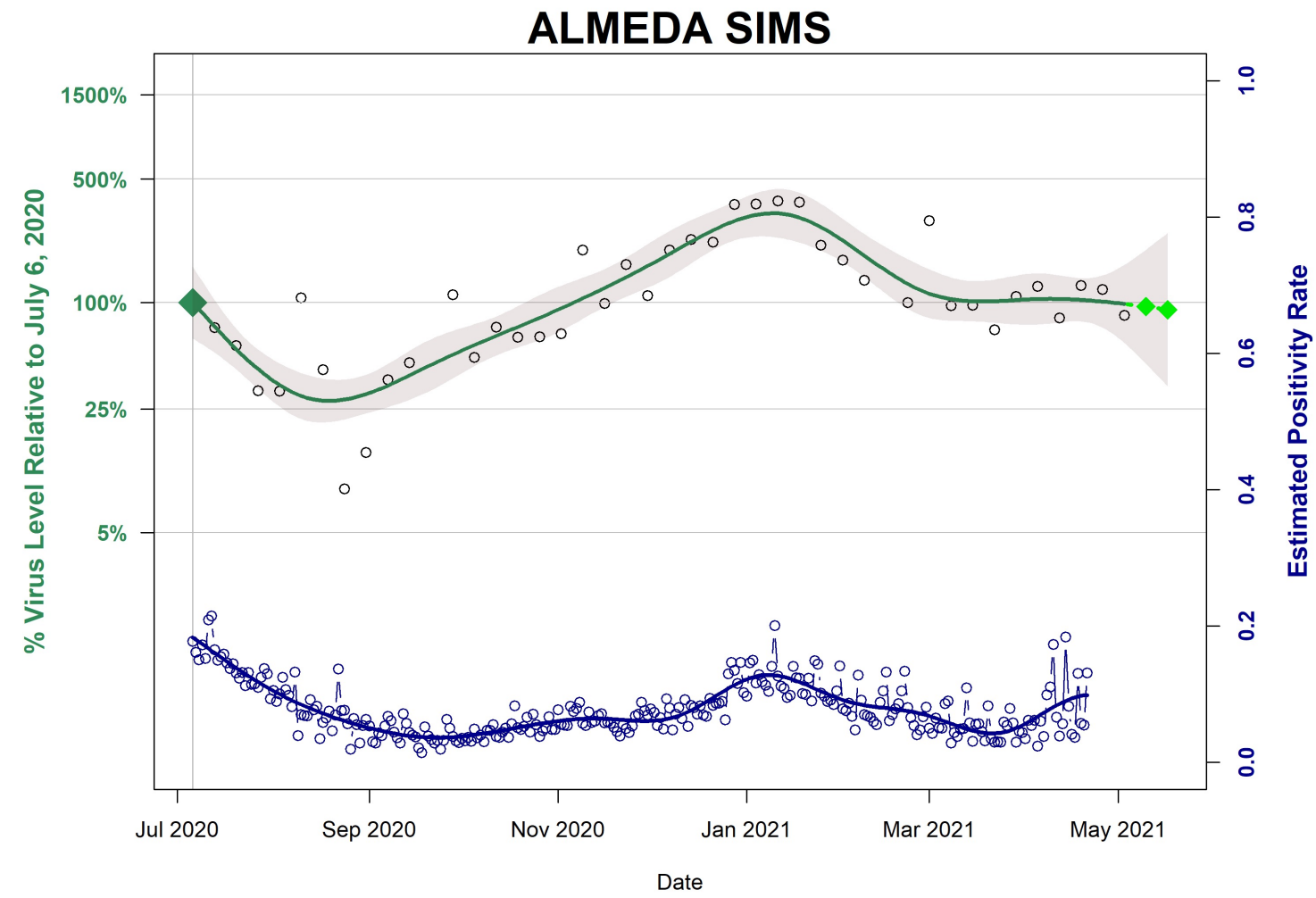


The lead time is 1 to 2 weeks.

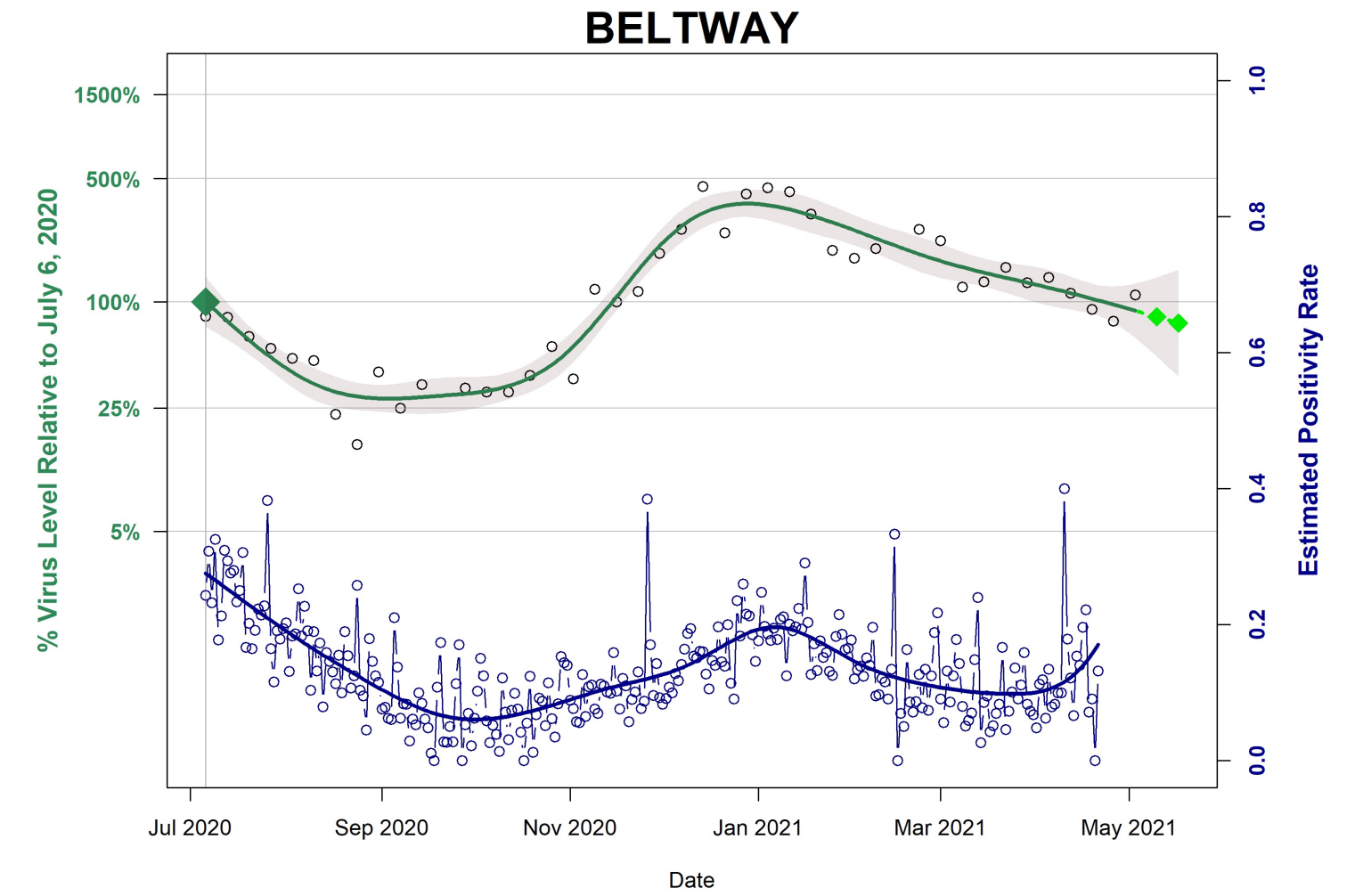
# Wastewater Treatment Plant Level



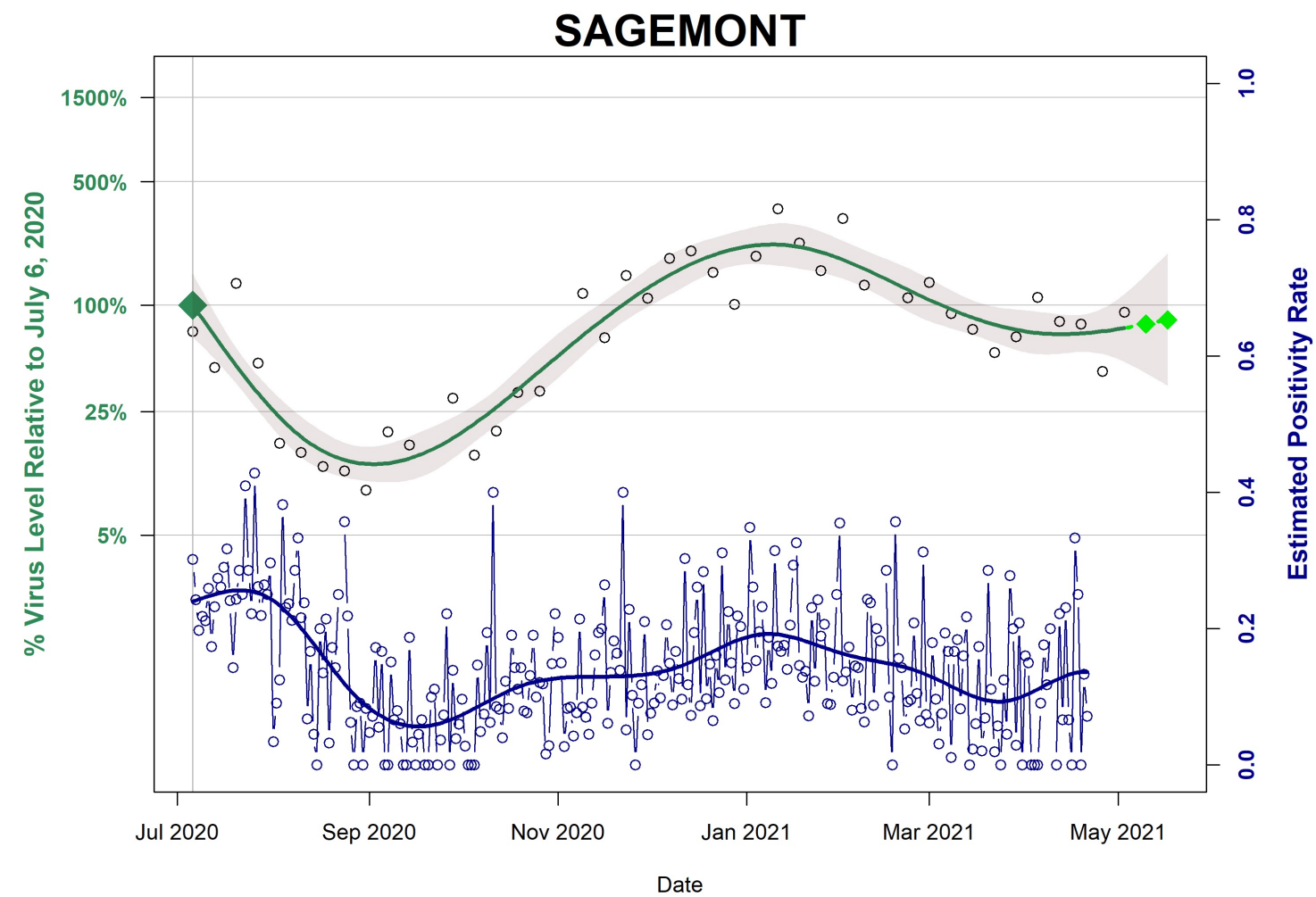
**ALMEDA SIMS**  
9.47 MGD;  
Pop. 330,126



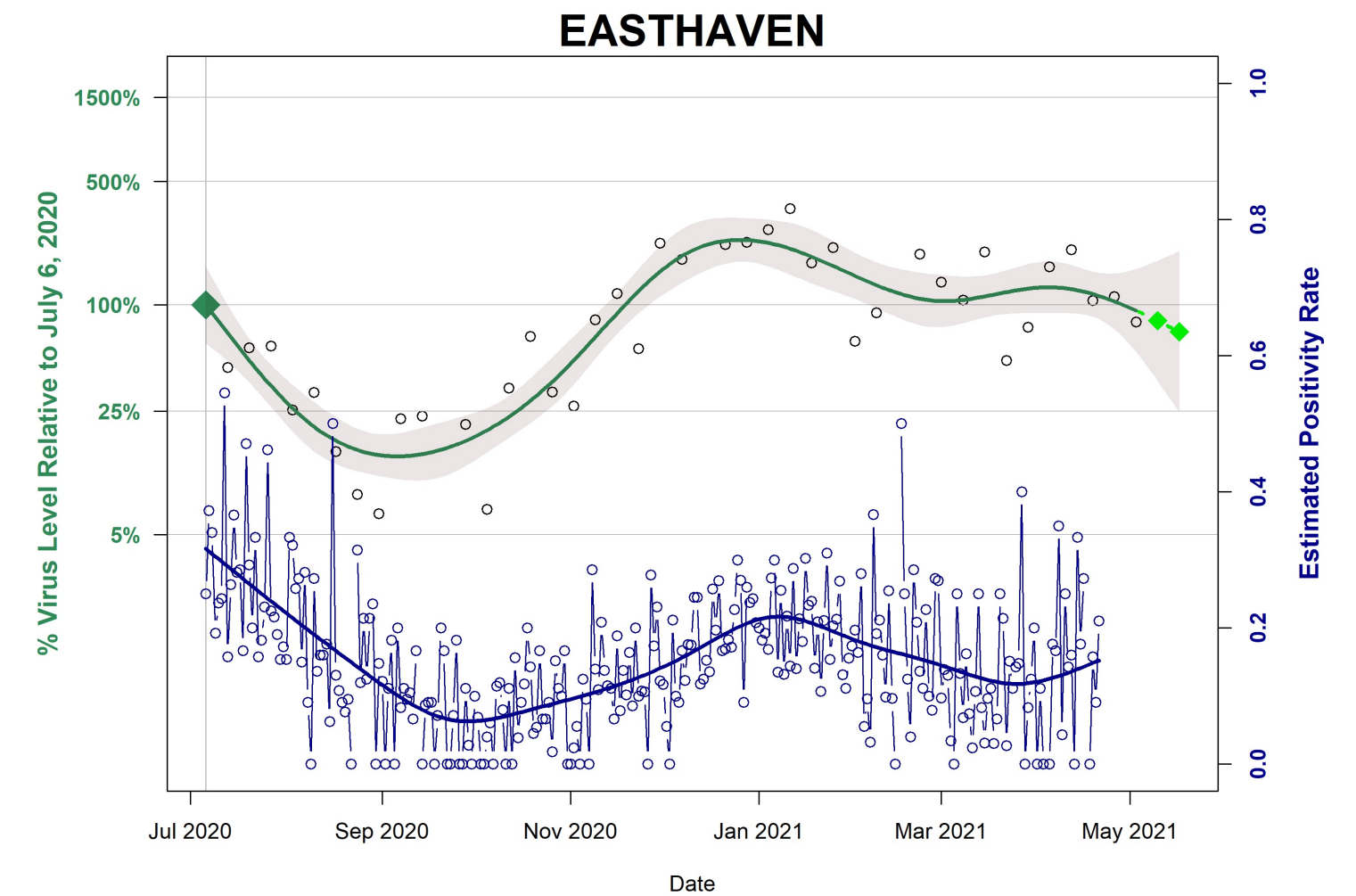
**BELTWAY**  
5.20 MGD;  
Pop. 134,557



**SAGEMONT**  
3.14 MGD;  
Pop. 67,929



**EASTHAVEN**  
1.18 MGD;  
Pop. 46,111



# Summary Graphs across all WWTPs



RICE



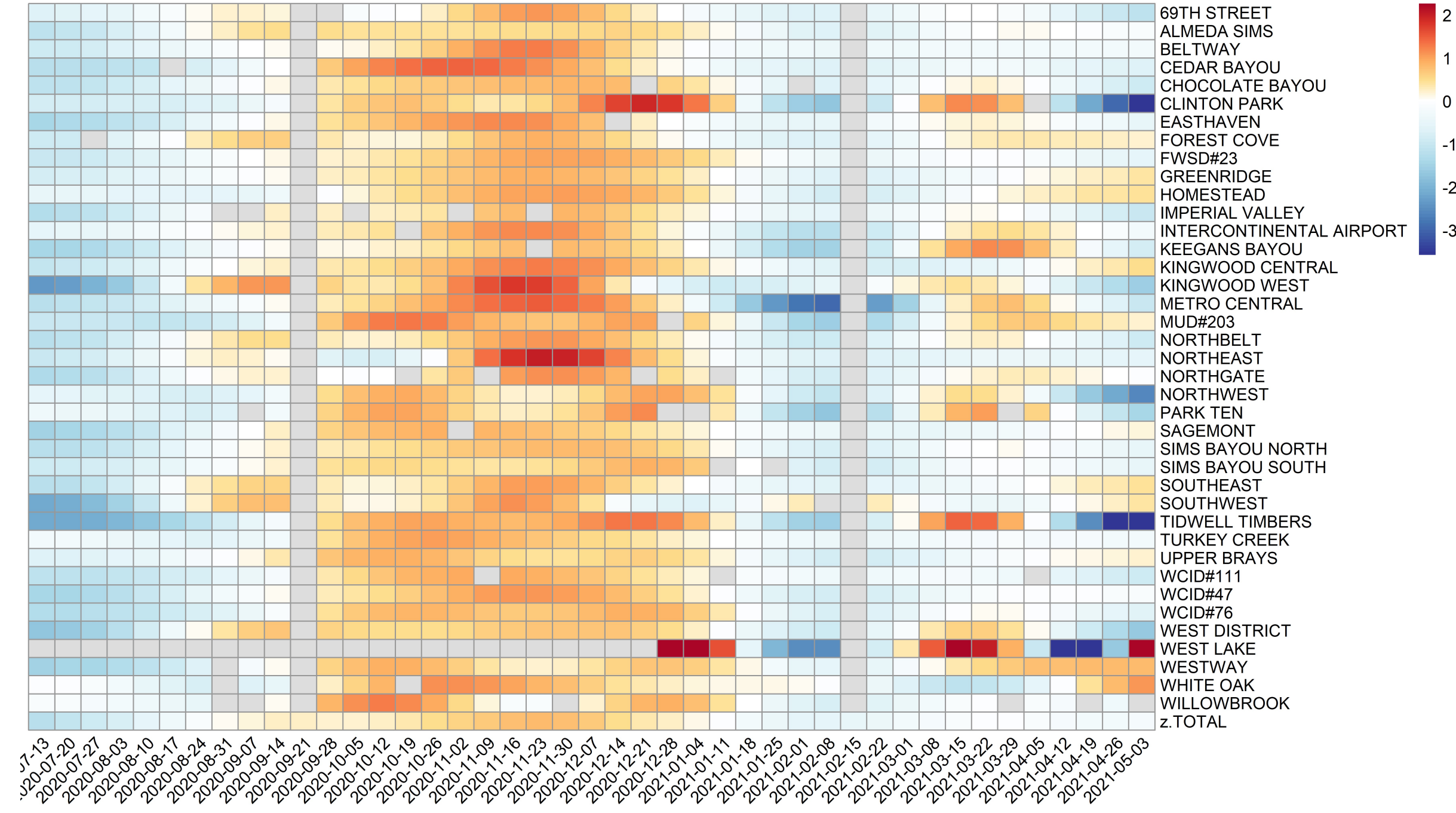
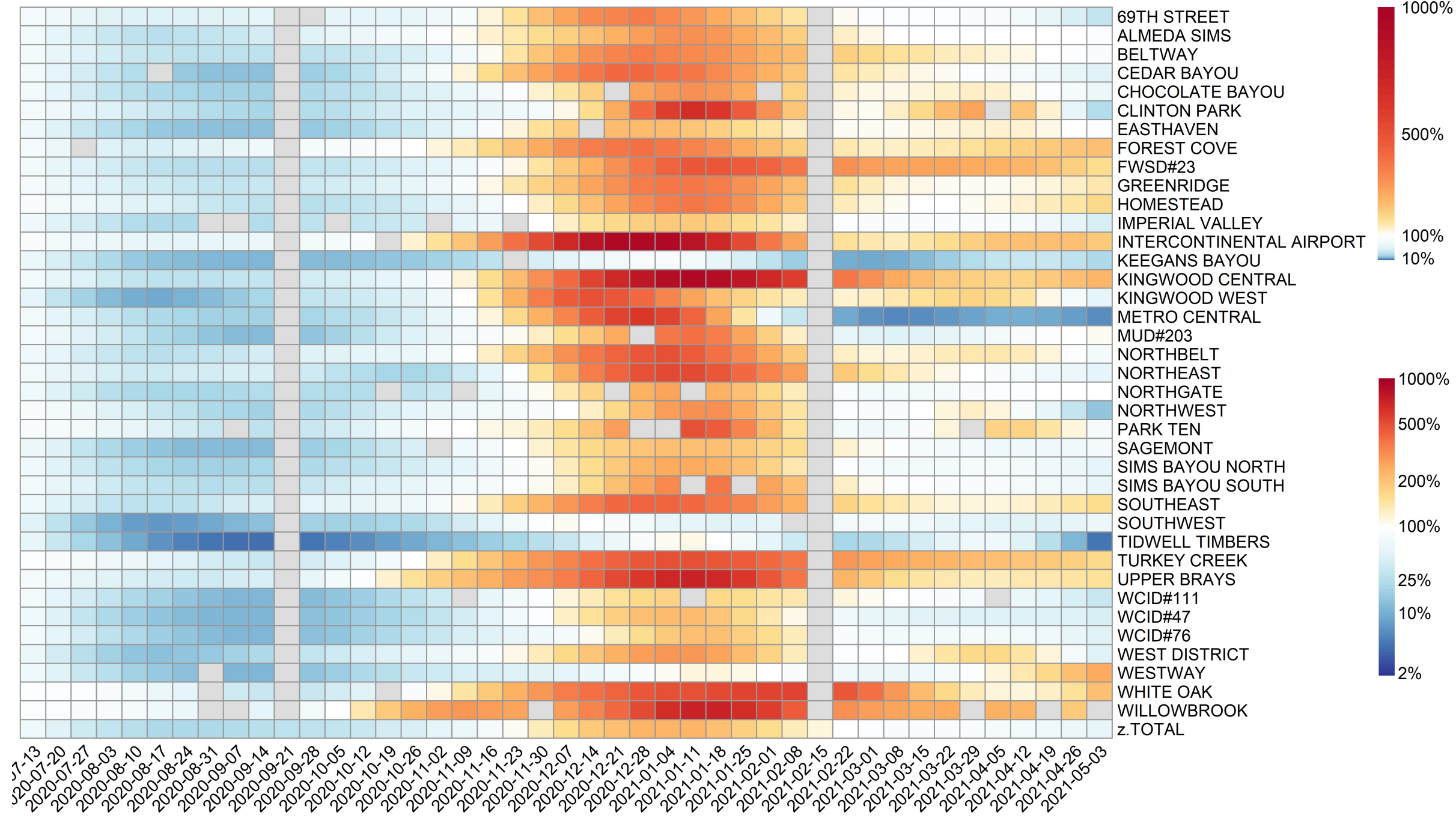
HOUSTON HEALTH DEPARTMENT

## Relative Viral Load Levels at WWTPs since July 6, 2020

## Percent One-Week Change in Viral Load at WWTPs since July 6, 2020

Pattern of Weekly Viral Load as a Percent of July 6, 2020 Viral Load Levels

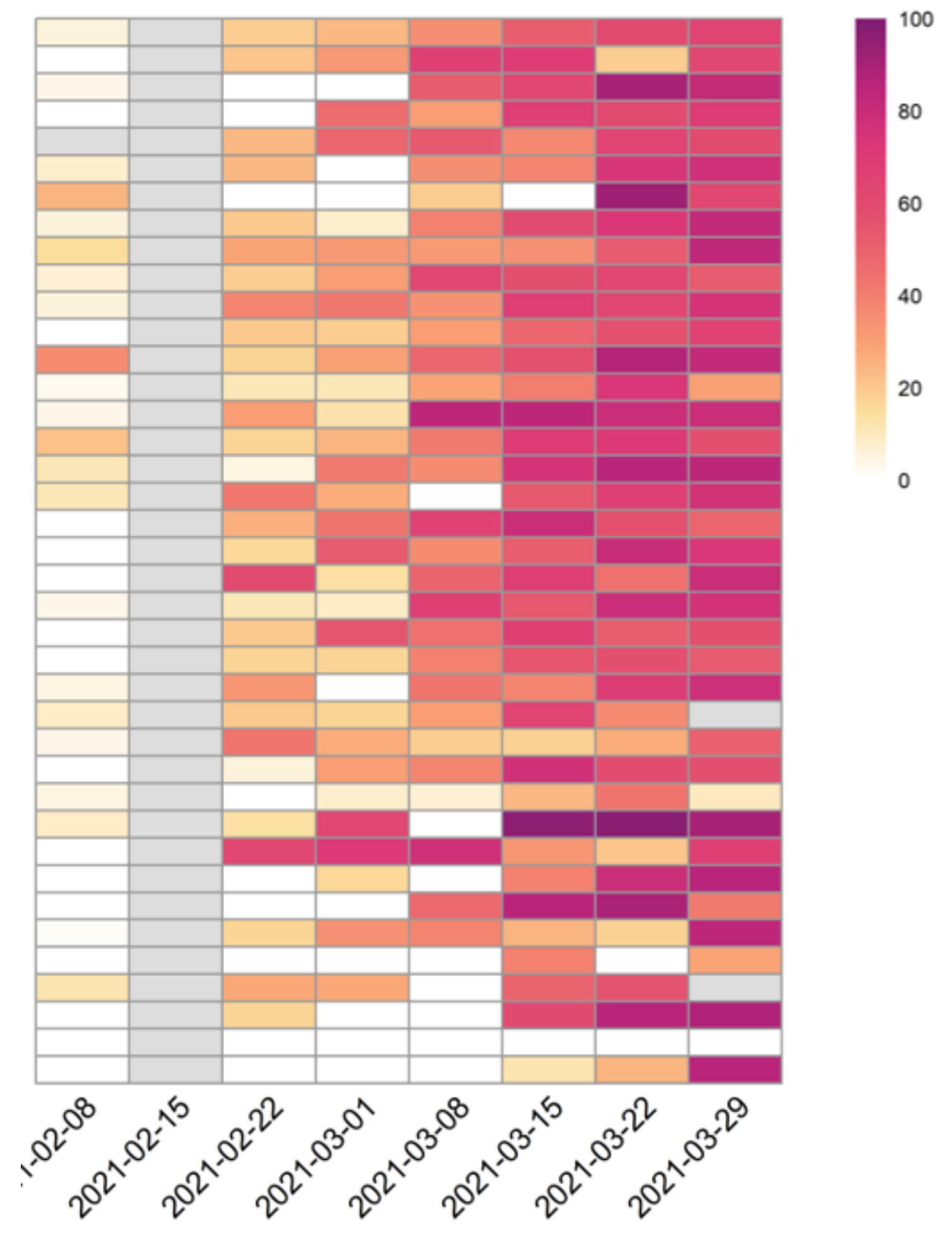
Pattern of One Week Relative Percent Change to the Week Prior by End Date



# Wastewater Variant Tracking

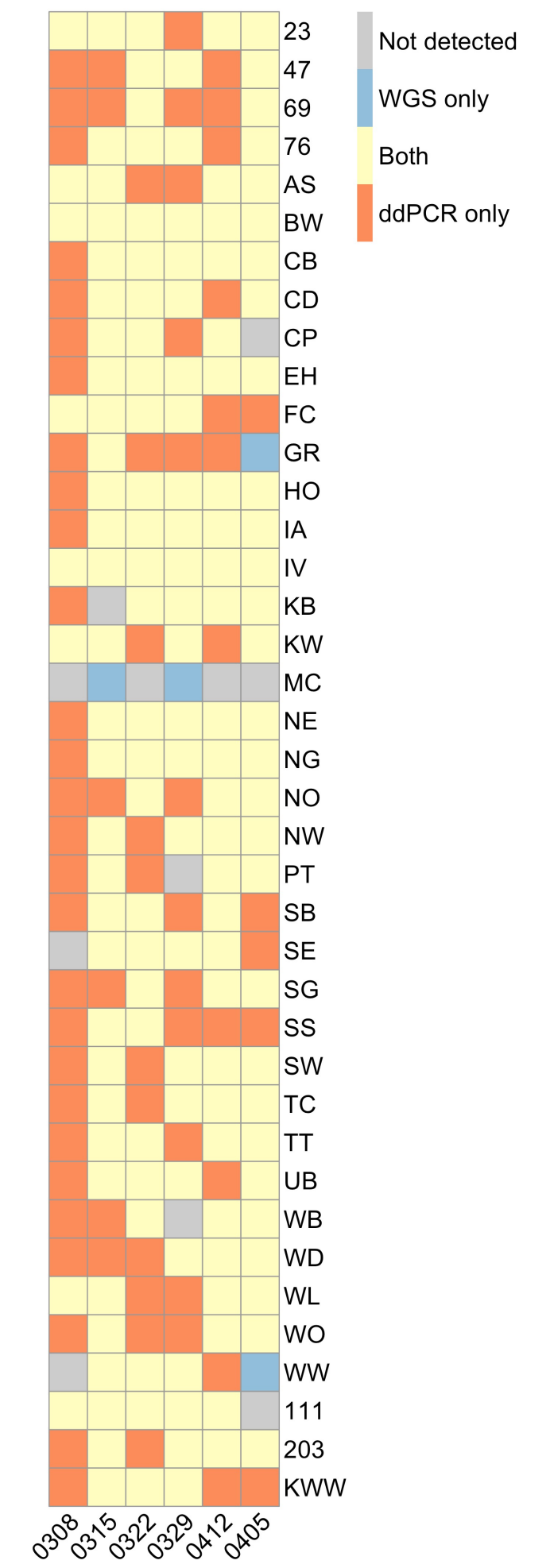


Pattern of Weekly Measure of Del69-70 Mutation  
WWTPs Ordered by Largest Viral Load



**Targeted** assay (ddPCR) for the detection of specific mutations

**Sequencing** of SARS-CoV-2 genomes from wastewater samples for more comprehensive screening of variants of concern.



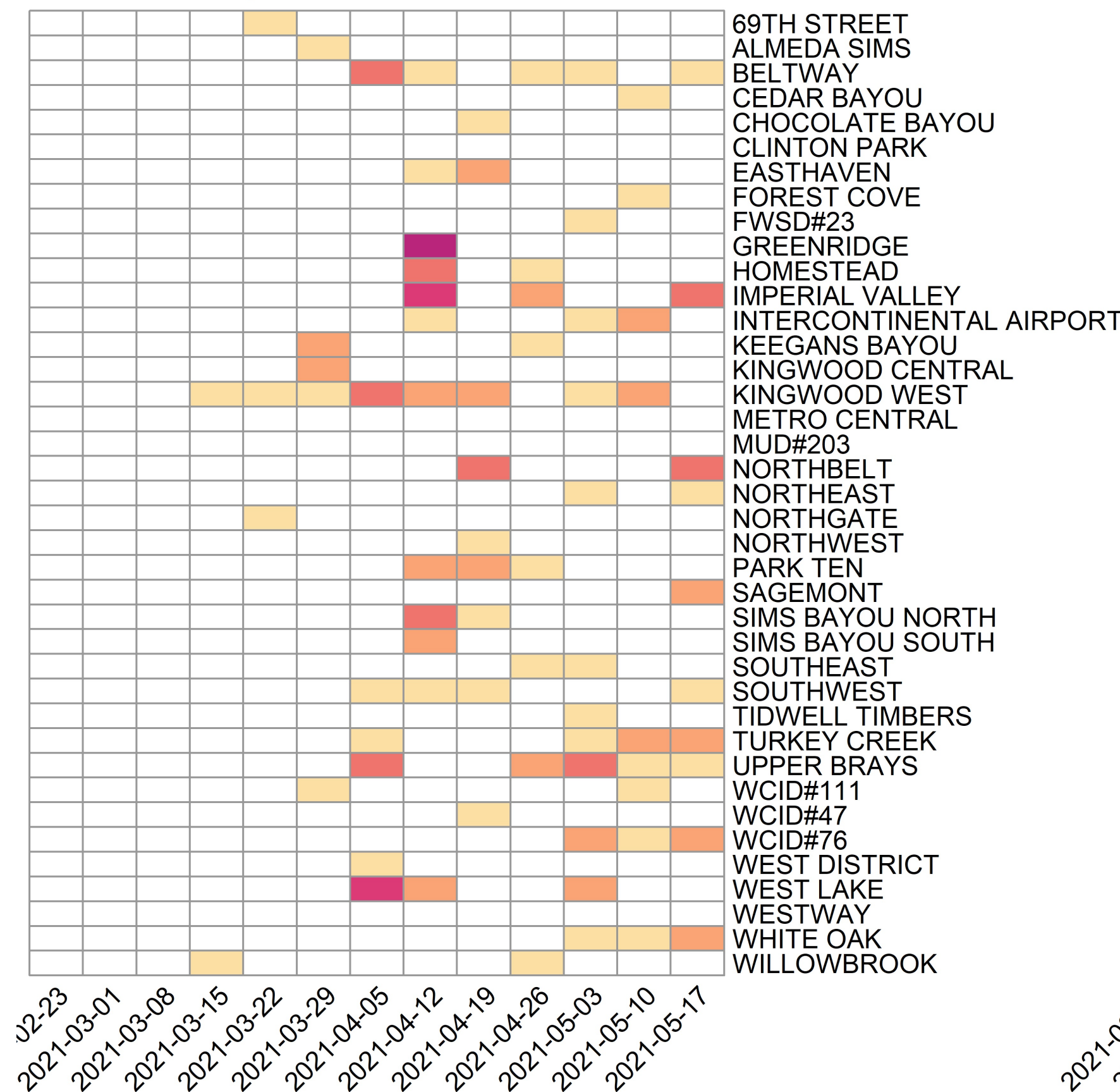


For each variant of concern (VOC) and variant of interest (VOI), there are a set of characteristic mutations that define it.

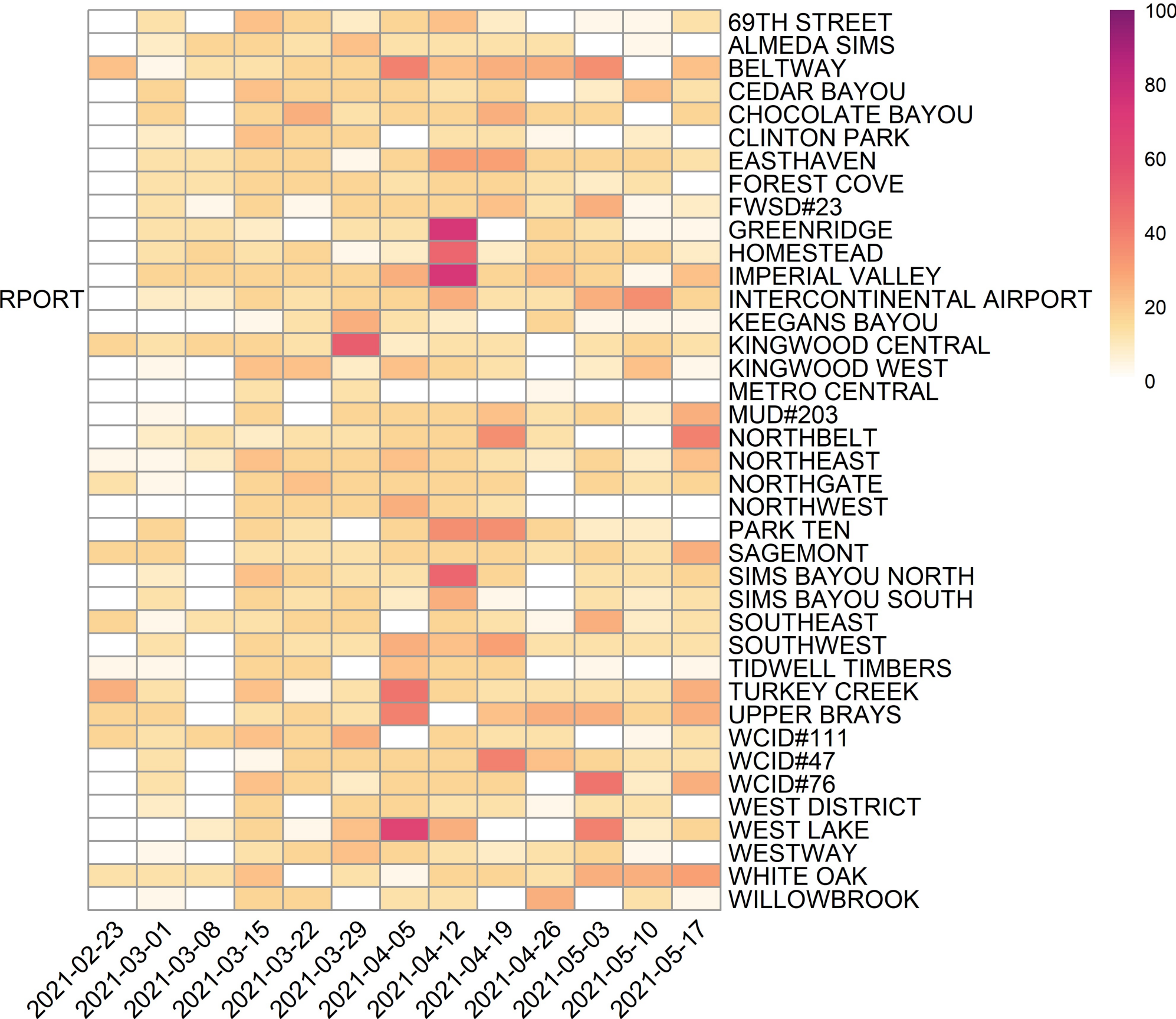
- Identified a subset of characteristic mutations as **indicative** mutations for each variant. **Indicative** mutations were defined as:
  - found in >90% of all genomes of sequenced variants
  - not found consistently (<30%) in sequenced genomes of other variants
- Also report the **total** number of characteristic mutations detected for each variant in each sample
  - Indicative mutations are a subset of the characteristic mutations.

## Example: Brazil (P.1) variant

Pattern of Weekly Indicative Score of Brazil Mutation



Pattern of Weekly Total Score of Brazil Mutation

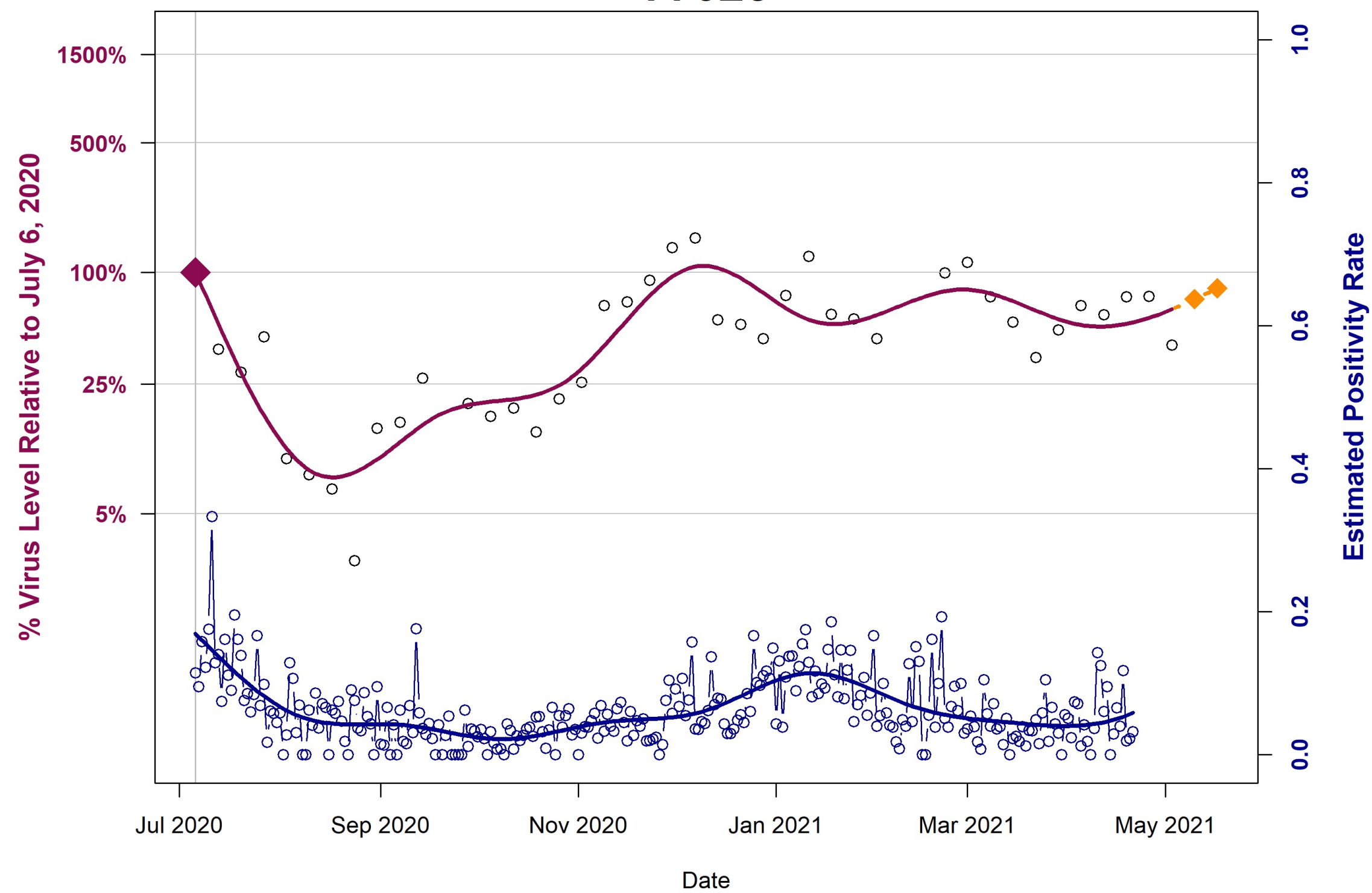


# Example at the Zip Code Level



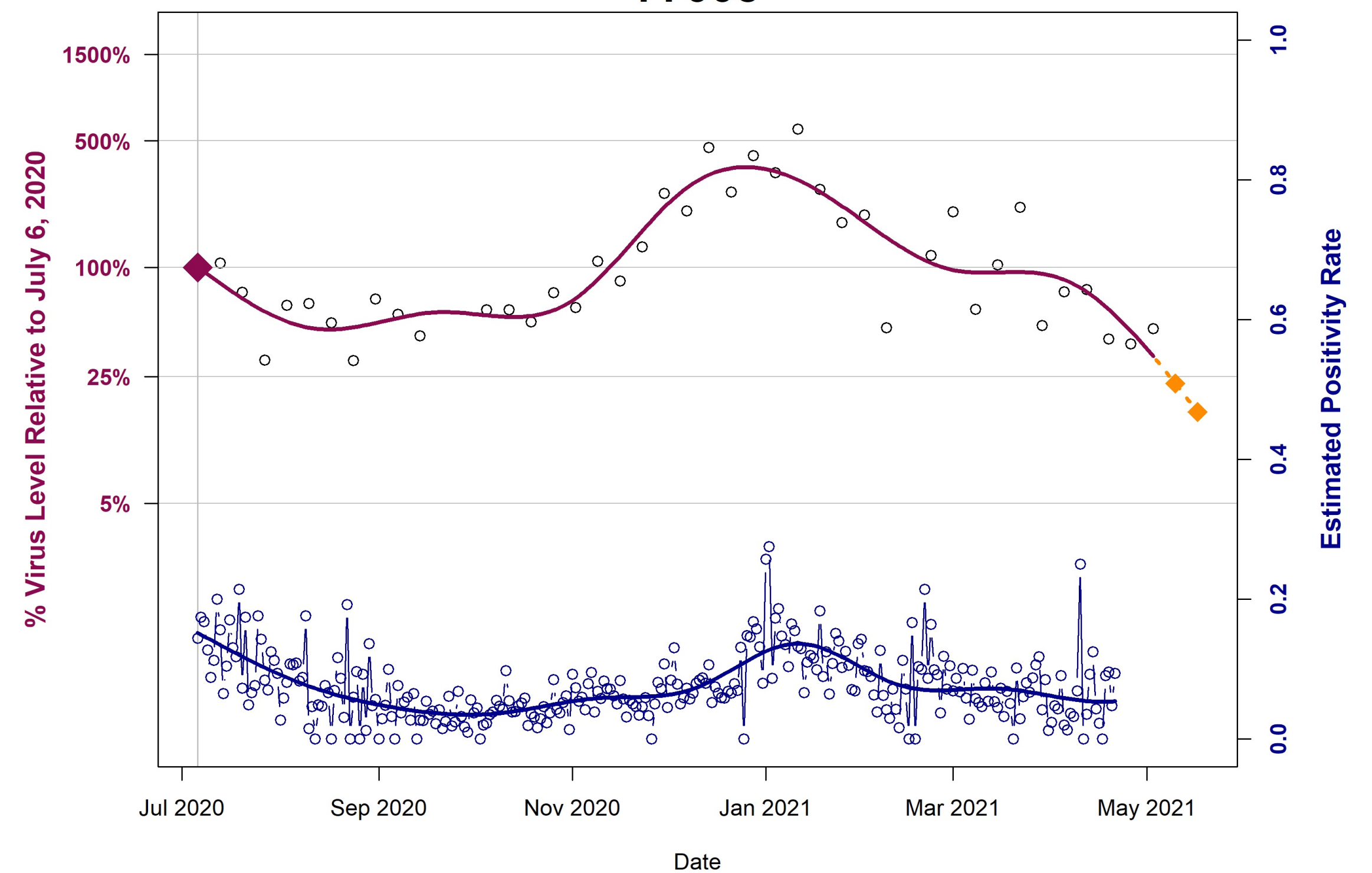
## Plateauing levels at zip code

77025



## Decreasing levels at zip code

77008



## Variables included in the Cluster Analysis Report

1 Top 15 Zip Codes by Historical Positivity Rate	17 Confirmed PCR UK Variant Case Count (Zip Code)
2 Number of Times the Zip Code has Repeated	18 Estimated WWTP Trend for the Zip Code
3 Historical Positivity Rate	19 Number of Addresses - 5 or More Active Positive Cases
4 Past 5 Weeks Positivity Rate	20 List of Addresses - 5 or More Active Positive Cases
5 Historical Vaccination Rate	21 Number of Times the Address has Repeated
6 Cumulative Positive Cases	22 Overall Count of Positive Cases at the Address
7 Number of Active Positive Cases	23 Count of Active Positive Cases at the Address
8 Race Information (ACS Data)	24 Address Type
9 Percent Hispanic (ACS Data)	25 Description of Address
10 Families Below Poverty Level (ACS Data)	26 Response Actions for the Address
11 Facilities with Sensitive Sub Populations	27 Median Age of Active Cases at the Address
12 WWTP(s) Within the Zip Code	28 Minimum Age of Active Cases at the Address
13 Percent of Jul 6 20 Copies/Day (WWTP)	29 Maximum Age of Active Cases at the Address
14 Percent of UK Variant (WWTP)	30 Date of Most Recent Positive Test at the Address
15 Percent of Jul 6 20 Copies/Day (Zip Code)	31 WWTP for the Address
16 Percent of UK Variant (Zip Code)	

- Top 15 zip codes by overall positivity rate
- **Cluster** defined as an address with 10 or more cases in the past 5 weeks
- **Incorporate** wastewater surveillance findings, vaccination rates, demographic data

# Example Cluster Report



**HOUSTON HEALTH DEPARTMENT**

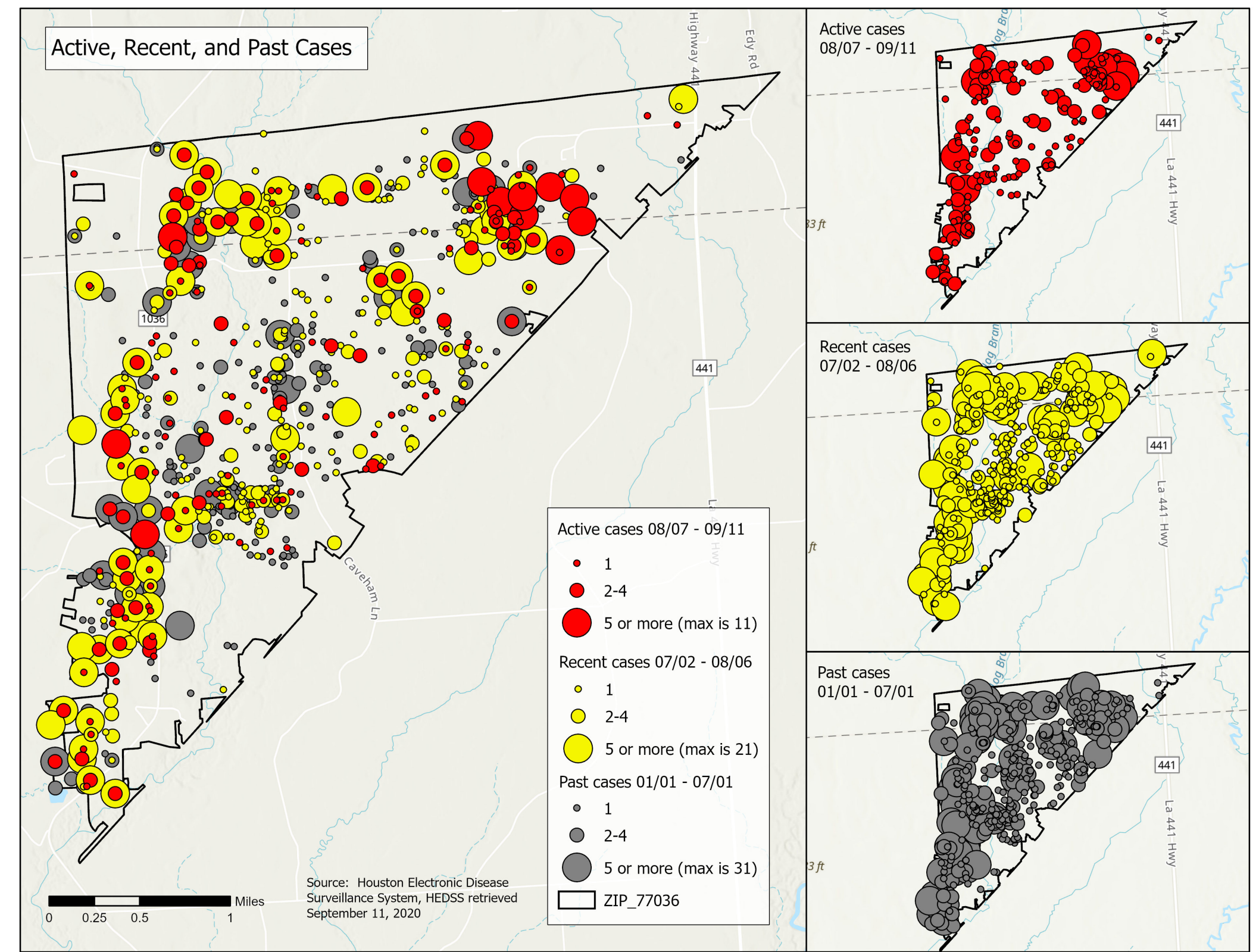
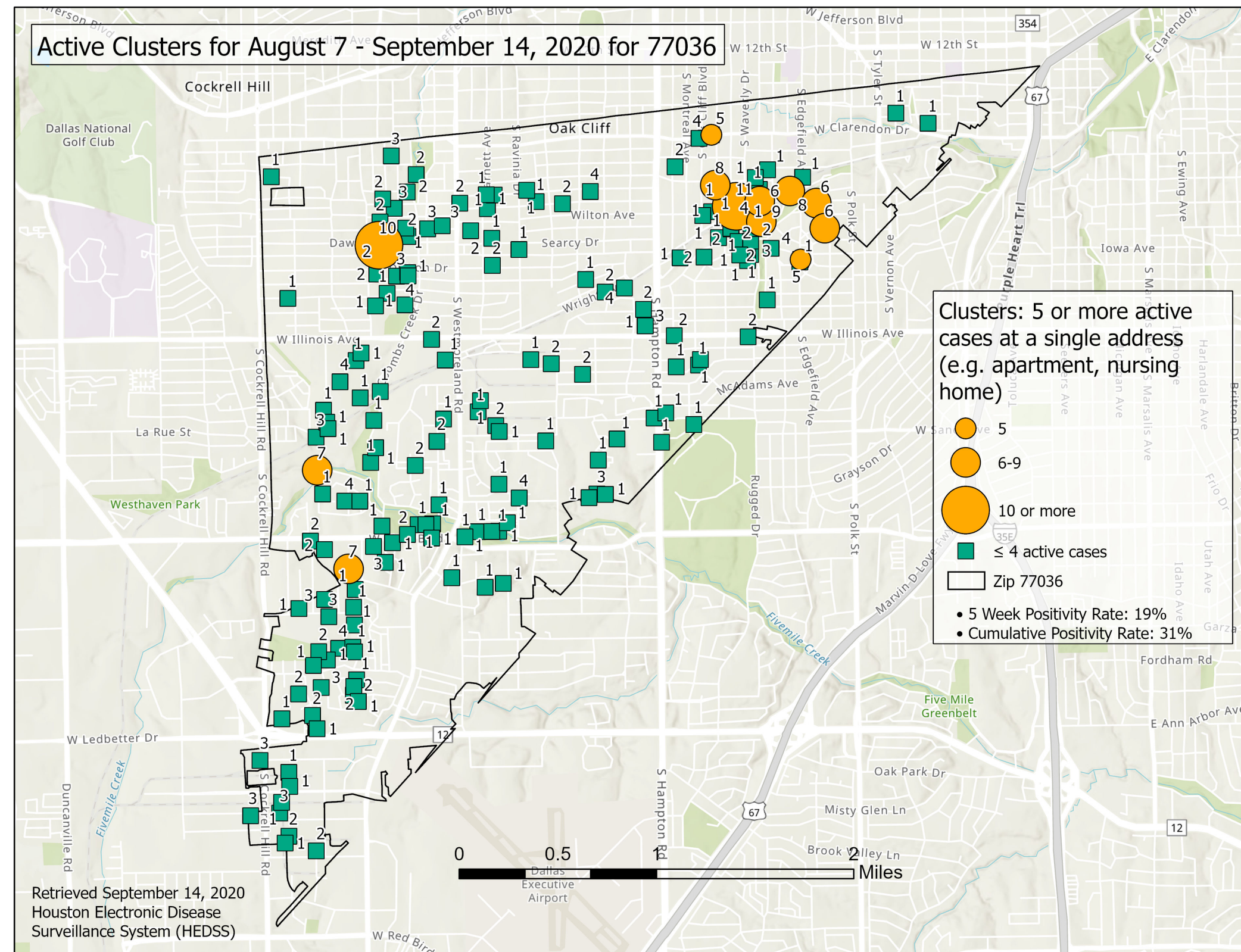
Top 15 Zip Codes by Historical Positivity Rate	Repeat (Count)	Zip Code Historical Positivity Rate	Zip Code Past 5 Weeks Positivity Rate	Zip Code Historical Vaccination Rate	Zip Code Historical Positive Cases	Zip Code Past 5 Weeks Active Positive Cases	Zip Code Race Information (ACS Data)	Zip Code Percent Hispanic (ACS Data)	Zip Code Families Below Poverty Level (ACS Data)	Zip Code Count of Facilities with Sensitive Sub Populations	WWTP(s) Within the Zip Code	WWTP % of Jul 6 20 Copies/Day (3/8/21 Data)	WWTP % of UK Variant (3/8/21 Data)	Zip Code % of Jul 6 20 Copies/Day (3/8/21 Data)	Estimated Wastewater Trend for the Zip Code (3/8/21 Data)	Locations in Zip Code with 5 or More Positive Cases (Past 5 Weeks)	List of Locations with 10 or More Positive Cases (Past 5 Weeks)	Repeat (Count)	Overall Count of Positive Cases at the Location	Past 5 Weeks Count of Positive Cases at the Location	Location Type	Description of Location	Response Actions	Age: Median (Past 5 Weeks)	Age: Min (Past 5 Weeks)	Age: Max (Past 5 Weeks)	Date of Most Recent Positive Test at the Location	WWTP for the location	
1	77001	Repeat (21)	31.5%	17.7%	8.8%	667	40	94% White, 5% Other, 1% Black, 1% American Indian	93%	20%	0	69th Street Imperial Valley	112% 42%	67% 66%	92%	Downward/Plateau	0	No Locations with 10 or More Active Positive Cases in the Past 5 Weeks											
2	77002	Repeat (21)	31.5%	22.2%	11.2%	2156	155	67% White, 30% Other, 3% Black, 1% Asian	94%	24%	0	Sims Bayou 69th Street	77% 112%	31% 67%	71%	Downward/Plateau	6	1111 MAIN ST	Repeat (8)	81	10	Apartment	Complex Name 1 - 2 Story, 202 Units, \$222-\$2222/mo	Notification/Education	40	7	66	2/19/2021	Sims Bayou
3	77003	Repeat (21)	30.6%	21.3%	8.1%	3245	259	86% White, 7% Black, 7% Other, 1% Asian	88%	33%	1	69th Street	112%	67%		Downward/Plateau	8	1112 MAIN ST	Repeat (4)	44	10	Apartment	Complex Name 2 - 2 Story, 202 Units, \$222-\$2222/mo	Notification/Education		2	44	2/23/2021	69th Street
4	77004	Repeat (20)																											
5	77005	Repeat (18)																											
6	77006	Repeat (16)																											
7	77007	Repeat (12)																											
8	77008	Repeat (20)																											
9	77009	Repeat (21)																											
10	77010	Repeat (11)																											
11	77011	Repeat (17)																											
12	77012	Repeat (6)																											
13	77013	Repeat (1)																											
14	77014	Repeat (5)																											
15	77015	Repeat (21)																											

Simulated data and addresses

# Examples of Maps from Cluster Report



**HOUSTON HEALTH DEPARTMENT**



Maps represent simulated, de-identified data

# Zip Code Tracking



**HOUSTON HEALTH DEPARTMENT**

## Top 15 Zip Codes

Each week corresponds to a cluster report and reflects the ranking, by overall positivity, of the top 15 zip codes for that week

rank	1-Jul	16-Jul	23-Jul	30-Jul	6-Aug	13-Aug	20-Aug	3-Sep	15-Sep	27-Sep	12-Oct	27-Oct	9-Nov	22-Nov	5-Dec	18-Dec	31-Dec	13-Jan	26-Jan	12-Feb	26-Feb	11-Mar	25-Mar	8-Apr	22-Apr	6-May	20-May
1	77036	77037	77037	77037	77083	77083	77083	77060	77012	77012	77012	77012	77012	77037	77037	77012	77037	77037	77037	77037	77037	77037	77012	77012	77012	77037	77012
2	77060	77060	77060	77060	77039	77060	77012	77038	77060	77037	77037	77037	77012	77012	77037	77012	77012	77012	77012	77012	77012	77012	77037	77037	77037	77012	77037
3	77002	77036	77087	77087	77060	77087	77060	77037	77037	77060	77060	77083	77093	77083	77093	77076	77076	77076	77076	77076	77076	77076	77076	77076	77076	77076	77076
4	77081	77081	77036	77012	77037	77012	77087	77012	77036	77083	77083	77093	77083	77093	77087	77076	77093	77038	77093	77038	77038	77093	77093	77093	77093	77093	77093
5	77067	77012	77012	77081	77087	77037	77037	77083	77083	77093	77093	77060	77060	77087	77093	77087	77038	77093	77060	77093	77093	77038	77038	77038	77017	77017	77017
6	77072	77076	77076	77036	77012	77093	77093	77093	77093	77076	77076	77076	77076	77060	77076	77083	77087	77060	77038	77017	77017	77017	77017	77017	77017	77087	77087
7	77076	77039	77083	77076	77093	77081	77081	77087	77076	77087	77087	77036	77087	77076	77060	77060	77060	77087	77087	77060	77087	77015	77087	77087	77038	77038	77038
8	77037	77028	77081	77477	77081	77036	77076	77076	77087	77036	77036	77087	77036	77036	77038	77017	77017	77017	77015	77087	77015	77087	77015	77060	77060	77060	77015
9	77099	77087	77093	77053	77036	77076	77036	77036	77081	77038	77038	77017	77017	77017	77038	77083	77083	77017	77015	77060	77060	77060	77015	77015	77015	77060	77060
10	77028	77072	77038	77093	77038	77038	77011	77053	77011	77081	77017	77011	77011	77038	77036	77011	77011	77015	77083	77011	77034	77034	77034	77034	77034	77034	77034
11	77012	77099	77014	77039	77076	77011	77038	77081	77017	77011	77011	77081	77081	77011	77015	77036	77015	77011	77011	77034	77011	77011	77083	77013	77013	77013	77013
12	77080	77067	77028	77028	77053	77017	77014	77023	77038	77017	77081	77015	77015	77081	77011	77015	77036	77034	77034	77023	77013	77013	77011	77011	77085	77011	77011
13	77031	77078	77002	77078	77504	77099	77099	77017	77053	77015	77015	77034	77034	77015	77034	77034	77034	77036	77036	77013	77023	77085	77013	77083	77011	77085	77085
14	77039	77093	77078	77011	77011	77072	77017	77049	77072	77061	77034	77038	77038	77034	77081	77053	77013	77013	77013	77036	77036	77023	77085	77085	77083	77083	77083
15	77074	77074	77072	77099	77078	77014	77078	77067	77078	77072	77053	77078	77061	77061	77061	77013	77061	77023	77023	77083	77085	77036	77023	77023	77023	77023	77023

# Wastewater Surveillance at Schools and Congregate Living



RICE



HOUSTON HEALTH  
DEPARTMENT

## Wastewater Surveillance Manhole Report

- Designate sites as:
  - High Positive
  - Lower Positive
  - Unclear
  - Negative
- Identify spikes or increases in wastewater viral load



# Wastewater Surveillance at Schools and Congregate Living



RICE



HOUSTON HEALTH DEPARTMENT

## Wastewater Surveillance Manhole Report

### High Positives (7) total

Nursing Home 1 [4]++  
 School 1 [3] ++  
 School 2 [1] ++  
 School 3 [2] ++  
 School 4 [0] ++  
 School 5 [3] ++  
 School 6 [1] ++

### Lower Positives (4) total

School 7 [0] +  
 School 8 [1] +  
 School 9 [0] +  
 School 10 [1] +

### Unclears (6) total

Jail 1  
 Nursing Home 2  
 School 11  
 School 12  
 School 13  
 Shelter 2

### Negatives (50) total

Jail 2  
 Nursing Home 3  
 Nursing Home 4  
 Nursing Home 5

### Negatives (50) total cont.

Nursing Home 6  
 Nursing Home 7  
 Nursing Home 8  
 Nursing Home 9  
 Shelter 3  
 Shelter 4  
 Shelter 5  
 Shelter 6  
 Shelter 7  
 Shelter 8  
 Shelter 9  
 Shelter 10  
 Shelter 11  
 School 14  
 School 15  
 School 16  
 School 17  
 School 18  
 School 19  
 School 20  
 School 21  
 School 22  
 School 23  
 School 24  
 School 25  
 School 26  
 School 27

### Negatives (50) total cont.

School 28  
 School 29  
 School 30  
 School 31  
 School 32  
 School 33  
 School 34  
 School 35  
 School 36  
 School 37  
 School 38  
 School 39  
 School 40  
 School 41  
 School 42  
 School 43  
 School 44  
 School 45  
 School 46  
 School 47

[#] signifies the number of weeks in a row a location tested positive from manhole wastewater samples

++ signifies high levels of >10,000 copies/L; + signifies lower levels <10,000 copies/L

Data Collected: 4/26/2021





# Wastewater Surveillance at Schools



RICE



HOUSTON HEALTH DEPARTMENT

School Name and Wastewater Sample results	# Cases Reported by School Since 4/26/21	# of PCR / Confirmed Cases since 4/26/21	Last Assessment	Compliant with School Check List (Yes/No)	Outbreak? (Yes/No)
Elementary 1 [3] ++	0	0	12/2/2020	Yes	No
Elementary 2 [1] ++	1	0	12/4/2020	Yes	No
Elementary 3 [2] ++	0	0	12/4/2020	Yes	No
Early Childhood 1 [0] ++	0	0	12/2/2020	Yes	No
Middle 1 [3] ++	2	1	12/7/2020	Yes	No
High School 1 [1] ++	1	1	12/7/2020	Yes	No

## Interdepartmental effort to combine wastewater surveillance and clinical assessment findings

- Outbreak Response Schools Team working in conjunction with Wastewater Surveillance Team
- Notify school district superintendent and school principal of wastewater results
- Notify HISD Nurse liaison of wastewater results
- Maintain active outreach with school for **10 days or until wastewater is negative**

[#] signifies the number of weeks in a row a location tested positive from manhole wastewater samples  
 ++ signifies high levels of >10,000 copies/L; + signifies lower levels <10,000 copies/L

# Wastewater Surveillance at Schools

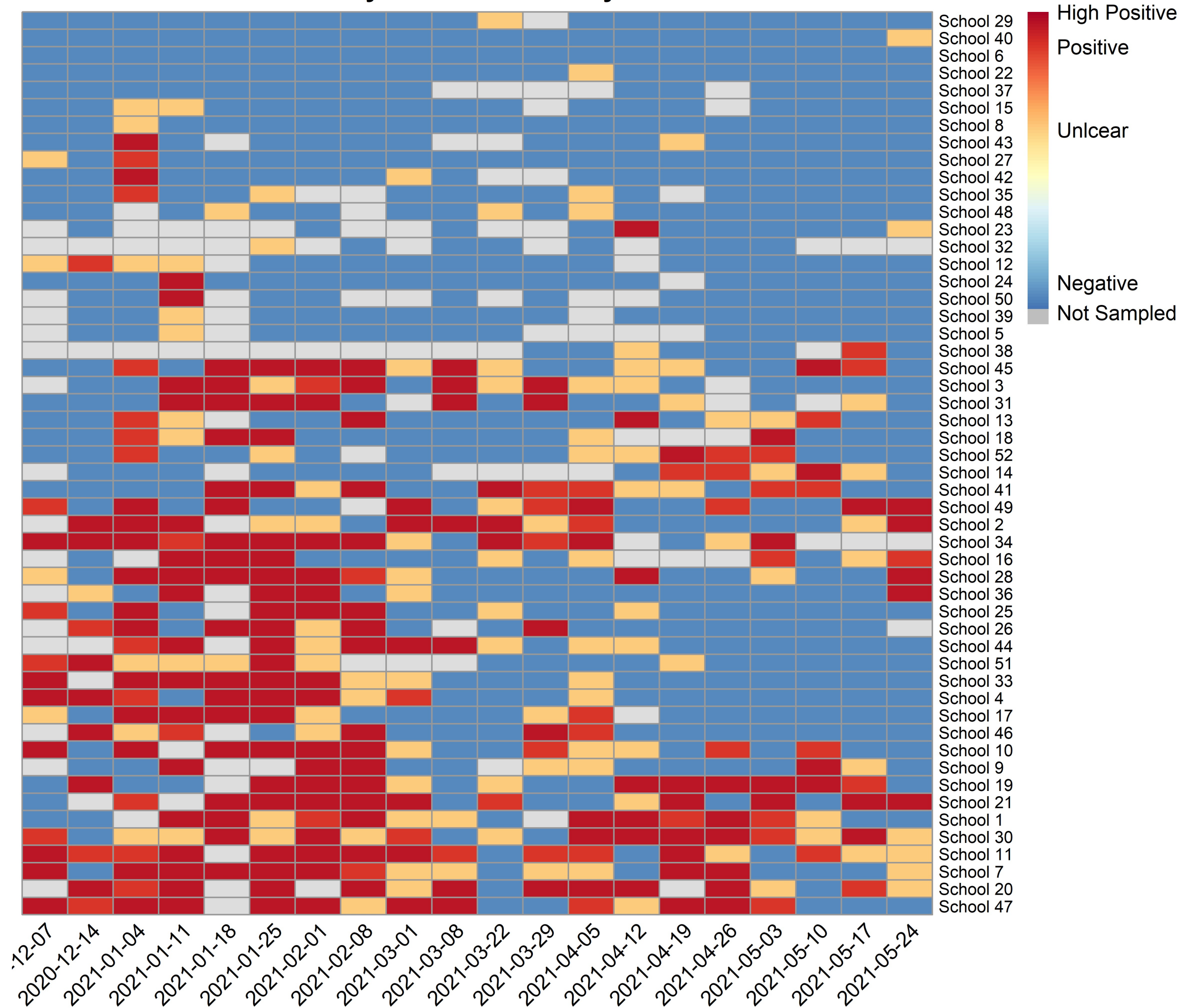


RICE



HOUSTON HEALTH DEPARTMENT

Pattern of Weekly Wastewater Analysis of Schools



## Interdepartmental effort to combine wastewater surveillance and clinical assessment findings

- Outbreak Response Schools Team working in conjunction with Wastewater Surveillance Team
- Notify school district superintendent and school principal of wastewater results
- Maintain active outreach with school for **10 days or until wastewater is negative**

# Wastewater Surveillance at Congregate Living



RICE



HOUSTON HEALTH DEPARTMENT

Facility Name and WW Sample results	Last Clinical Testing at Facility	# of PCR / Confirmed Cases Since 2/1/21	Last Assessment	Compliant (Yes/No)	Vaccination Date	# of consecutive weeks of positive results (staff/residents)
Jail, Jail 1 [3] ++	2/10/2021	680	n/a	Yes	-	Since May 2020
NH, Nursing Home 1 [9] ++	2/8/2021	0	1/22/2021	Yes	1/8/2021 2/1/2021	Last case was on 1/13/2021
NH, Nursing Home 2 [3] ++	2/8/2021	0	1/22/2021	Yes	1/4/2021	6 weeks Last case was on 1/28/2021
NH, Nursing Home 3 [2] ++	2/4/2021	5	1/20/2021	Yes	1/19/2021 1 <sup>st</sup> dose	3
NH, Nursing Home 4 [11] ++	2/8/2021	0	01/25/2021	Yes	01/06/2021 01/27/2021	0
Shelter, Shelter 1 [0] ++	5/28/2020	0	05/20/2020	Yes	-	0
NH, Nursing Home 5 [1] +	1/26/2021	0	1/29/21	Yes	1/5/21 1/26/21	Last case 1/25/2021

[#] signifies the number of weeks in a row a location tested positive from manhole wastewater samples  
 ++ signifies high levels of >10,000 copies/L; + signifies lower levels <10,000 copies/L

## Interdepartmental effort to combine wastewater surveillance and clinical assessment findings

- Outbreak Response Team working in conjunction with Wastewater Surveillance Team
- Notify facility director of wastewater results and **confirm if a new active outbreak**
  - If new outbreak, conduct onsite assessment and facility testing with mobile testing unit



# Questions?

