



BIPARTISAN POLICY CENTER

PCEA Standards & Testing Recommendations

TECHNICAL GUIDELINES DEVELOPMENT COMMITTEE
FEBRUARY 9TH, 2016

WWW.BIPARTISANPOLICY.ORG

The Executive Order focused the Commission's work on several areas of concern:

- i. the number, location, management, operation, and design of polling places;
- ii. the training, recruitment, and number of poll workers;
- iii. voting accessibility for uniformed and overseas voters;
- iv. the efficient management of voter rolls and poll books;
- v. voting machine capacity and technology;
- vi. ballot simplicity and voter education;
- vii. voting accessibility for individuals with disabilities, limited English proficiency, and other special needs;
- viii. management of issuing and processing provisional ballots in the polling place on Election Day;
- ix. the issues presented by the administration of absentee ballot programs;
- x. the adequacy of contingency plans for natural disasters and other emergencies that may disrupt elections; and
- xi. other issues related to the efficient administration of elections that the Co-Chairs agree are necessary and appropriate to the Commission's work.

➤ Standards: What we heard

- Stifle innovation
- Too prescriptive
- Too voluminous
- Difficult to understand
- Out dated
- Lack of EAC Commissioners hinder advances



PCEA

- **Testing: What we heard**
 - Too costly
 - Takes too long
 - Issues with “nimbleness” of modifications
 - Desire for clarity in testing



BIPARTISAN POLICY CENTER

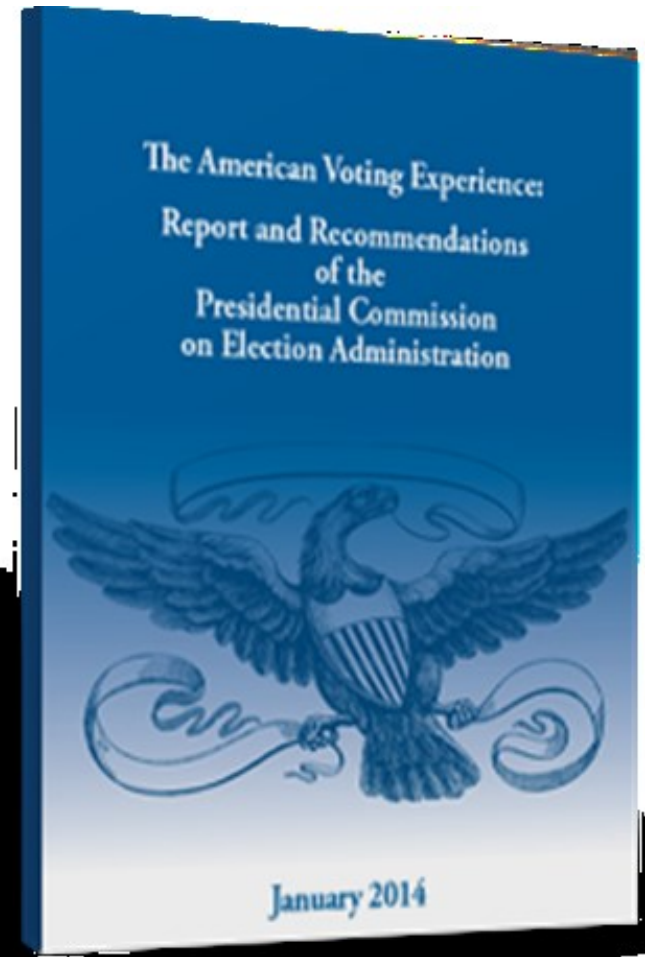


PCEA

- Standard Related Recommendations
 - *Reform of the standard-setting and certification of voting equipment.*
 - Minimum, quorum of EAC Commissioners not necessary for standard setting.
 - Let the Boards continue their work.



BIPARTISAN POLICY CENTER



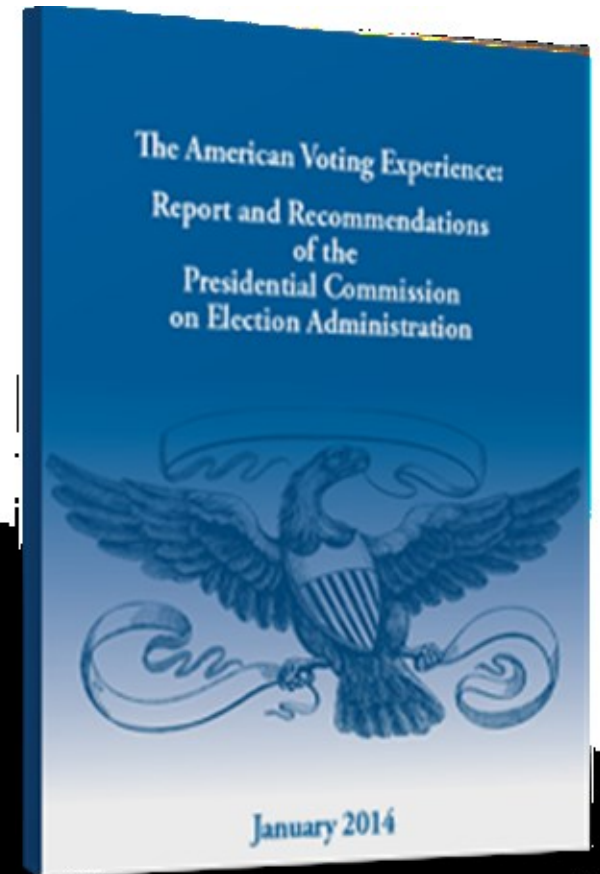
PCEA

➤ Certification Related Recommendations

- Should have ability to allow for innovation and testing of new methods and ideas rather than merely perpetuating status quo.
- Certification should be done so that changes & modifications can be done quickly.



BIPARTISAN POLICY CENTER





“Reform of the standard-setting and certification of voting equipment”



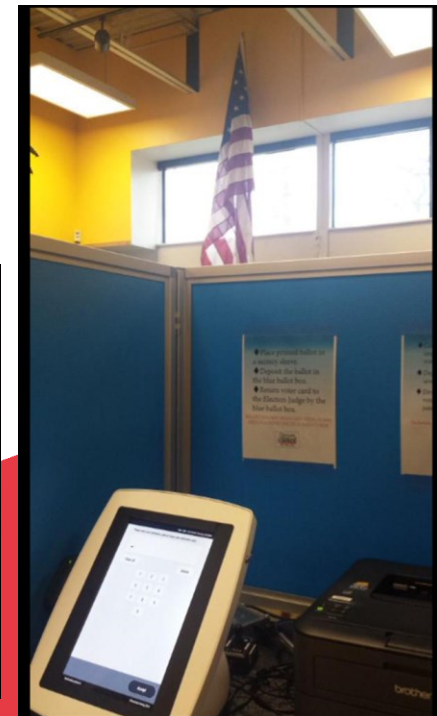
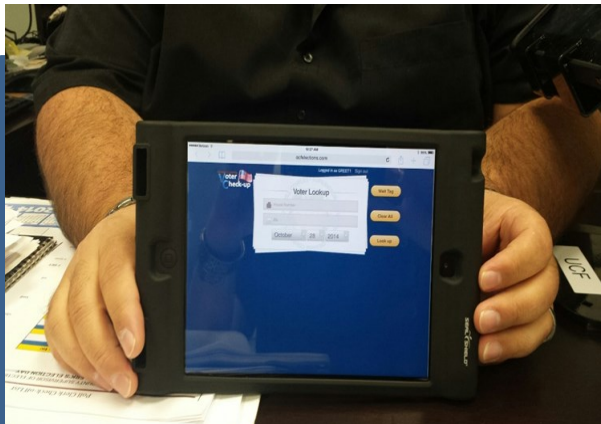
New path for the VVSG:

- Re-evaluation
- Re-envisioning
- Re-inventing

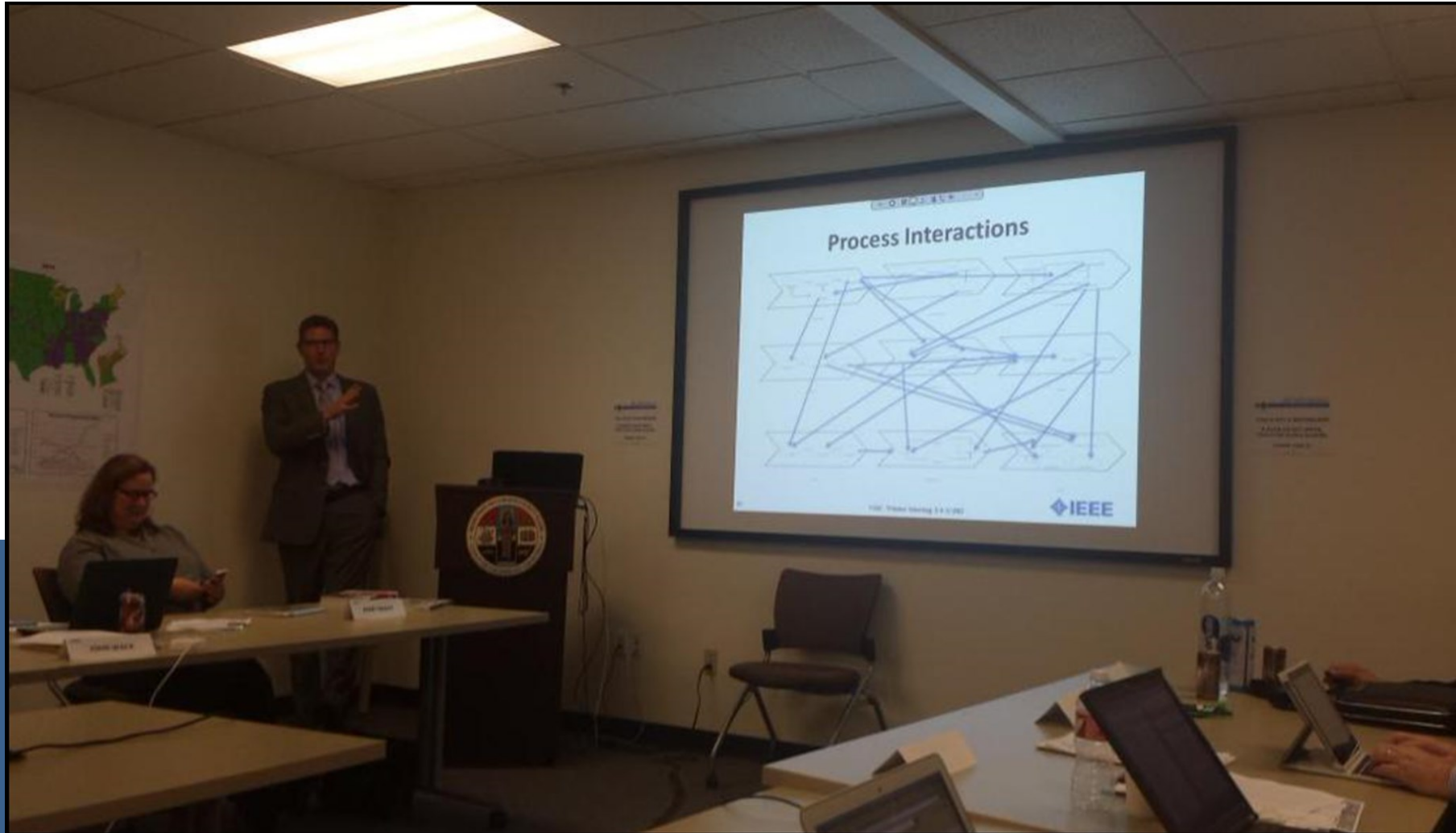
of scope
creation process
format & application

Re-evaluation

- New working group format lends itself to the re-evaluation of what the current voting environment is.
- We now have
 - electronic ballot delivery
 - growing EPB & BOD usage
 - smart technology & COTS being used in the field



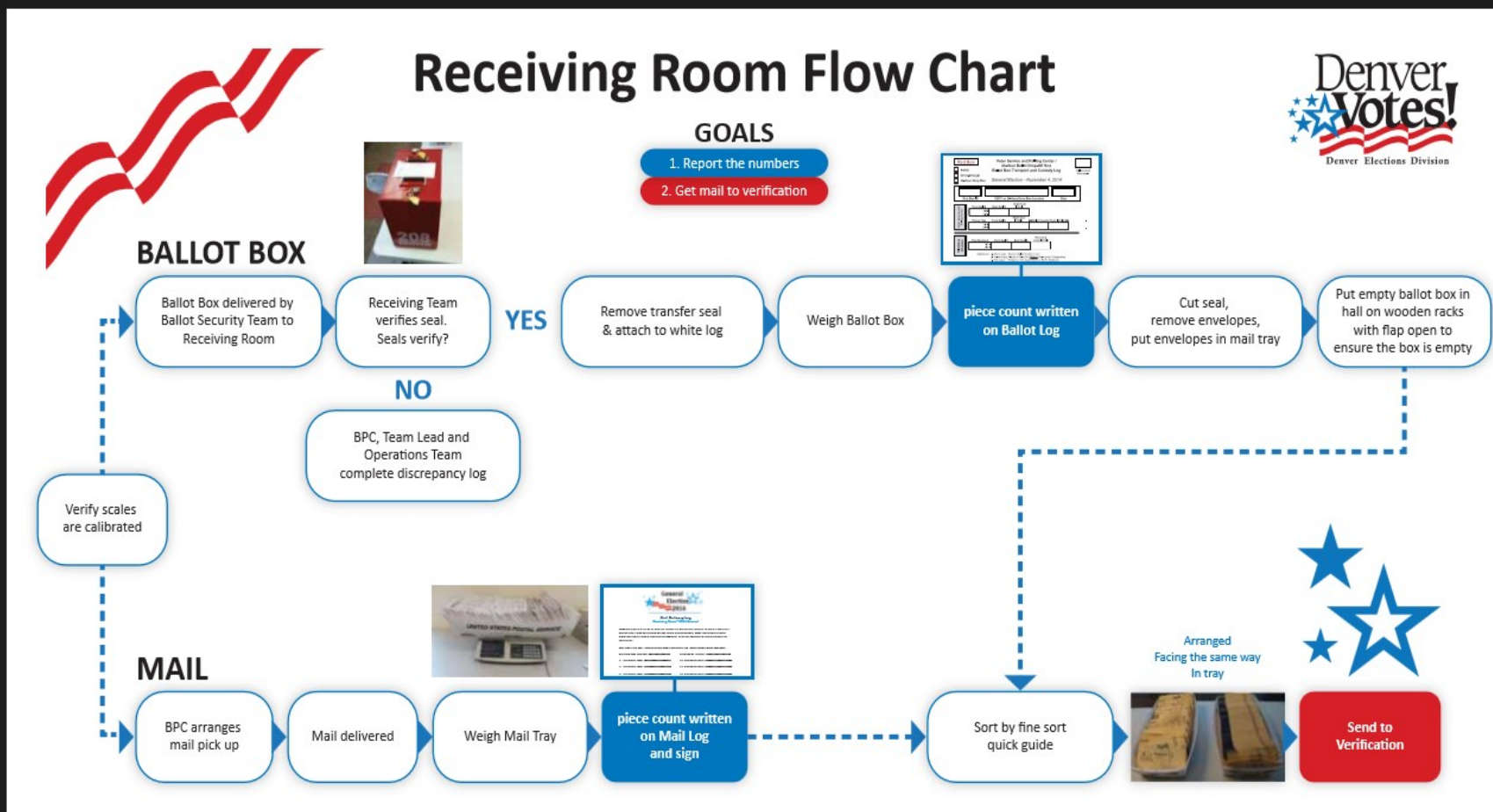
Re-Evaluation: Elections are complex, and continue to get more complicated with each passing legislative session or court case.





Getting an accurate pulse of where we are at is important, although it can seem like we are continually rehashing some of the same issues.

BPC gathered people together to discuss some of these same questions in Nashville back in December.



Re-Envisioning the Process



BIPARTISAN POLICY CENTER

The working-group approach to the standard creation is an attempt to shift the lengthy delays at the end of the process with the burst of interest that seems to “enjoy”, to the beginning of the work and channel those energies productively with the hope of truncating the time needed.

This relies heavily upon participation.



BIPARTISAN POLICY CENTER

Processes are varied across the country, some deal with humidity and others static, but all are counting ballots.



Orange Co, FL



Maricopa Co, AZ



BIPARTISAN POLICY CENTER

Some storage is minimal,
others are vast.



Ramsey Co, MN



Los Angeles Co, CA



BIPARTISAN POLICY CENTER

Some ballots are cast on
Election Day, some before.

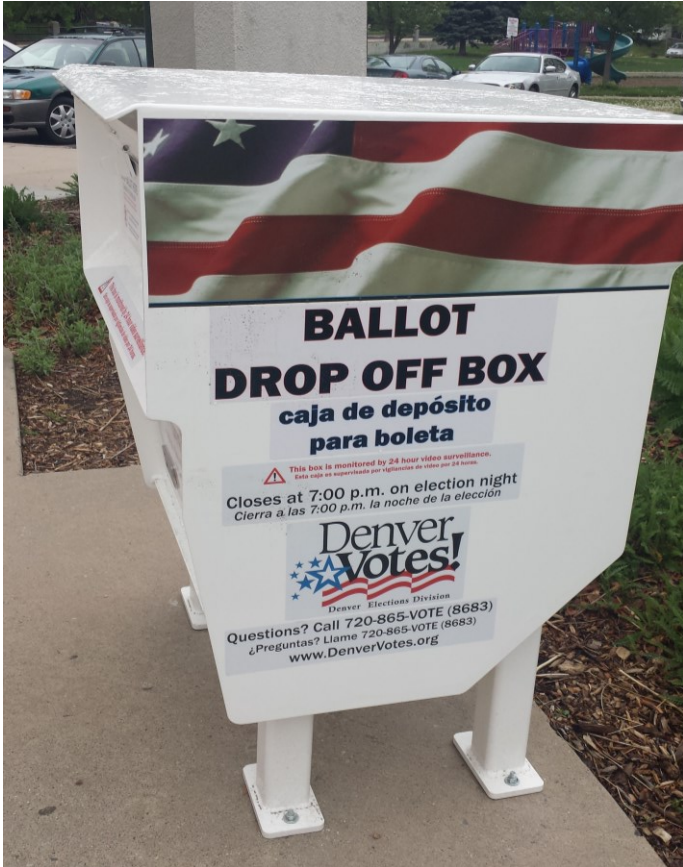


Kansas City, MO



BIPARTISAN POLICY CENTER

Some delivered by USPS,
but returned in person.



Denver, CO

Some are returned by USPS.



BIPARTISAN POLICY CENTER



Maricopa Co, AZ

Re-Envisioning the Process



BIPARTISAN POLICY CENTER

The NASED Technology Group looked at how other standards are created and the idea of leveraging other standard work to inform the VVSG.

Considerations:

1. There are THOUSANDS of standards & standard setting bodies.
2. If other work is utilized, how/who maintains it to ensure validity and iterative currency?



2/8: David's spoke about the fast pace of changes in technology--how do we ensure that the standards stay current if it takes years to revise?

What are the implications on the VVSG if it is tied to other standards? Does HAVA allow for updates to the VVSG via updates to those other standards without the TGDC?



2/8: Diane mentioned that there are lots of existing access standards and how do we leverage that? Particularly with the election concentration on paper?

& Where is the distinction made clear regarding what are LEGAL requirements and what are “voluntary” standards?

Re-Invention VVSG



BIPARTISAN POLICY CENTER

High-Level Requirements

By establishing that the VVSG contains only that which is necessary to maintain the philosophical principles established, **AND NOTHING MORE**, we have the potential to reach our goal of an understandable VVSG.



Re-Invention VVSG



BIPARTISAN POLICY CENTER

Test Assertions

Detailed Test Assertions that support the Requirements provide a clear path for rigorous testing while also increasing the uniformity of testing performance amongst the VSTLs.



Re-Invention VVSG



BIPARTISAN POLICY CENTER

Levels/Layers/Scaling

2/8 there were numerous mentions of looking at the VVSG as a multi-layered document. At the HAVA core you have the defined scope.

2/8 McDermott suggested the Technical/Functional/Geographic approach with testing scalable – not a pass/fail

Re-Invention VVSG



BIPARTISAN POLICY CENTER

Geographic/State Mapping

A review of what the individual state requirements are, and where there is overlap or gaps with the VVSG, should inform the conversation.



Re-Invention VVSG



BIPARTISAN POLICY CENTER

State Mapping

In this context is it important to look at the state certification requirements as well as state processes?

Consider, what if a handful of states do something — is that to drive the conversation and a standard creation?

Straight-ticket, ranked-choice, top-two, etc.



Re-Invention VVSG



BIPARTISAN POLICY CENTER

State Mapping

IF SO:

2/8 Katy mentioned that there are currently 26 states allowing for return either via an online portal (6) or email (21). YET this is a traditional nonstarter...



Re-Invention VVSG



BIPARTISAN POLICY CENTER

Levels/Layers/Scaling

Consider this when thinking about the inclusion of voter registration and common data formats:

Many states implemented statewide systems 10 years ago in response to HAVA, and they did so quickly. Many states are now rebuilding & modernizing – the opportunity to make great gains is upon us.

Re-Invention VVSG



BIPARTISAN POLICY CENTER

Levels/Layers/Scaling

Considering the increase in online voter registration, having some resource of how to do it well, so that it is accessible to voters but also so that data is best leverage to increase the efficacy of election administration, would be helpful.

2/8: Jeremy E. mentioned the candidate who had a party change that they were unaware of.

Tech issue? Or procedural call--modification of address and party blank means no change to party or to remove party?

Certification Reform?



BIPARTISAN POLICY CENTER

Any opportunity to leverage the testing manufacturers/
vendors are already doing?

2/8: Merle discussed the possibility of vendor attestations

What elements of the testing and certification process take the most time? How can that be economized without sacrificing overall integrity of the process?



We've heard about making the VVSG consumable for election officials, voting equipment usable for voters with varying abilities and needs, but lets not forget that they also have to be operational for poll workers...our volunteer army.



Do the standards take them into consideration?

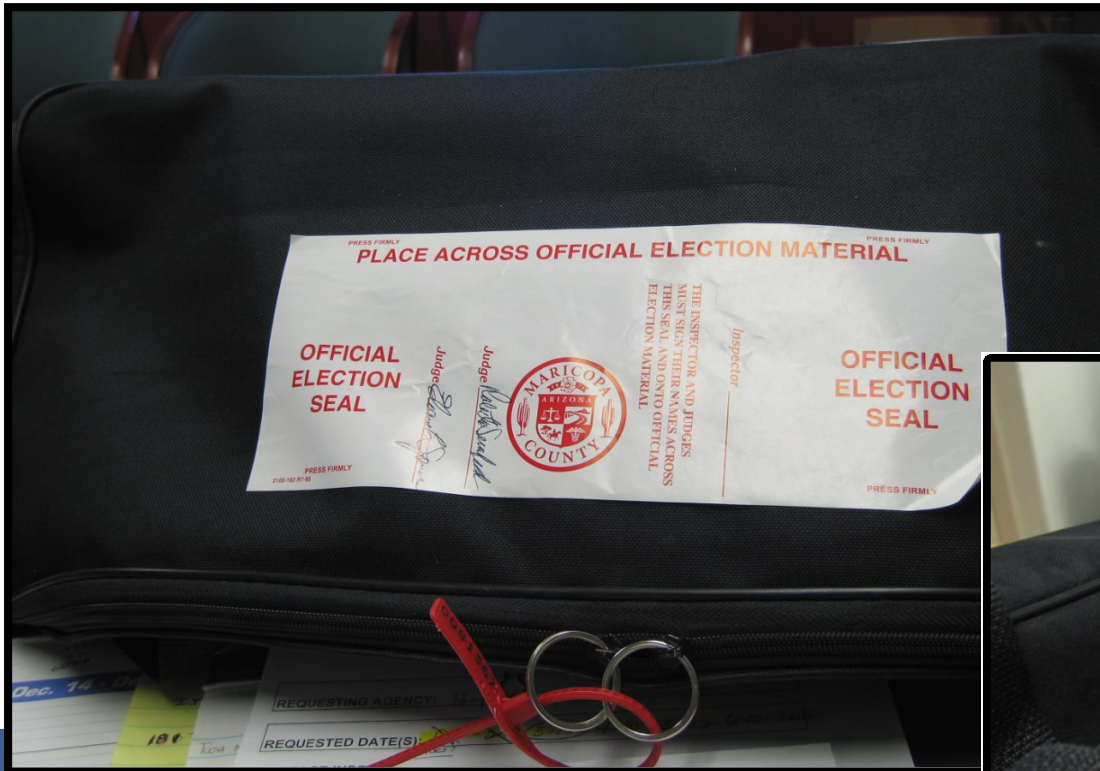


I'd like to leave you with some examples of what they can do with the advanced technology of an adhesive/beaded seal...

Election Realities: Human Element



BIPARTISAN POLICY CENTER

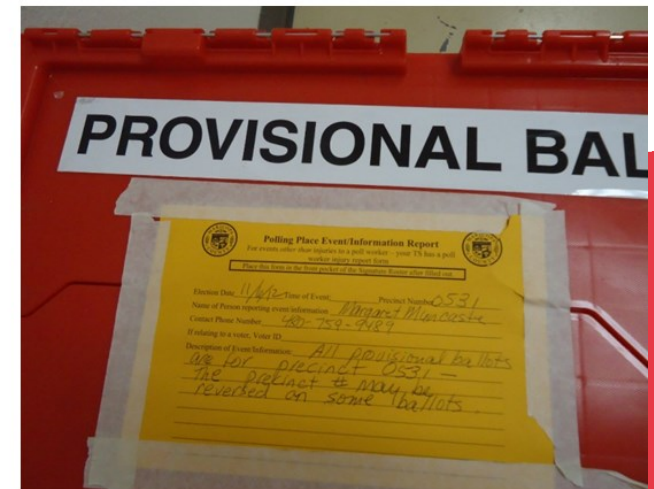


Maricopa Co, AZ

Election Office Realities: Human Element...



RIPARTISAN POLICY CENTER



Maricopa Co, AZ

Election Realities: Human Element



BIPARTISAN POLICY CENTER



Maricopa Co, AZ

Election Realities: Human Element



BIPARTISAN POLICY CENTER



Maricopa Co, AZ

Election Realities: Human Element



BIPARTISAN POLICY CENTER



Maricopa Co, AZ



2/8: So as Diane mentioned yesterday, and what the PCEA heard repeatedly, pollworkers don't always set up/turn on the accessible device.
WHY?

It may be useable for the voter, but not for the worker & ten years of training hasn't changed that.



So.

Should the standards inform the ability to actually USE the equipment – not to register your selections and to vote, but to SIMPLY TURN IT ON & PREP IT FOR THE VOTER?



2/8: “Everything has changed except our way
of thinking”
(Merle channels Einstein – again)



BIPARTISAN POLICY CENTER

2/8: As Jeremy (G) mentioned, time is of the essence and there is monumental work to be done.



BIPARTISAN POLICY CENTER

Do we continue in the current paradigm,
continue the status quo?

“You’re gooder than that”



SOULPANCAKE





BIPARTISAN POLICY CENTER

Or do we pick up the mantle to forge this new path through uncharted waters?
“What will be your Space Jam?”





BIPARTISAN POLICY CENTER

“What will you create that will make the world awesome?”

S O U L P A N C A K E





BIPARTISAN POLICY CENTER

Tammy Patrick

tpatrick@bipartisanpolicy.org