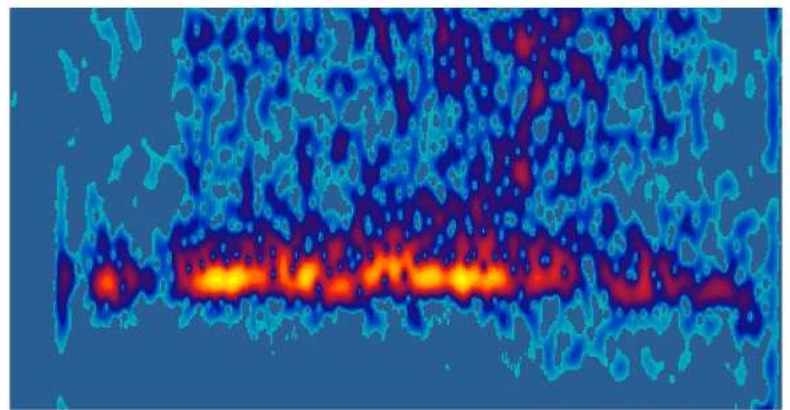


SWG ***Speaker***



Type-11 Record Usage Scenario Test Cases (Draft)

Vince Stanford, Brad Wing and Peter Higgins

September 4, 2014

Abstract

Several usage scenarios for various types of transactions involving the ANSI/NIST Type-11 Record are set forth herein. The companion ANSI/NIST records necessary to accomplish the transaction are also set forth. The XML representations of the records are provided for verification and validation purposes. The originating agency is a fictional NIST Biometric Police Department (NBPD). The latitude/longitude is approximately the NIST front gate in Gaithersburg, Maryland, USA. The time stamps reflect the NIST Meeting Room Data Collection of 2008.

Contents

I	Submission of Sample from NIST “Biometric Police Department” with multiple speakers	2
1	Originating a Transaction	4
1.1	Introduction	4
1.2	Segmentation	4
1.3	Scenarios	4
1.4	Request speech transcript (ReqSpeechTrns)	5
1.4.1	Using Type-11 Container Field 11.013 to request as speech transcript	5
1.4.2	Using Type-11 Raw Field 11.014 to request a speech transcript	10
1.4.3	Processing capabilities	15
1.5	Processing Tech lab returns segmentation and transcript (RetSpeechTrns) TOT to originating authority	15
2	Identification Oriented Transactions	30
2.1	Transactions that prepare for recognition of a speaker	30
2.2	Transactions required to complete a match	30
2.3	Processing entity capabilities	30
2.4	Return Speaker Clustering (ReqSpkClust)	31
2.5	Enrolling a speaker: Voice Model Creation and Retention	48

Part I

Submission of Sample from NIST
“Biometric Police Department” with
multiple speakers

A partial list of operational transactions includes the following:

1. **Originate a Transaction.** A police entity which has obtained an audio sample extracts a subset of data, described in a companion Type-20 record, from a larger file.
2. **Transcribe the Audio Sample.** This includes speech segment time-tagging indicating transcript segmentation.
3. **Cluster Speech Segments:** Create a diary, attributing speech segments to a list of speakers in the sample with internal designation such as Speaker-1, Speaker-2 etc.
4. **Create a Voice Model.** Create and store a voice model from a selected speaker from the clustered segments for future speaker recognition matching.

Recommended scenarios for future development.

1. **Match Voice Model against questioned sample.** Use a previously computed voice model to match to a questioned speech sample from a new recording.
2. **Digitize an Analog Recording.** Specify an analog tape for conversion to digitized voice data file. (TBD)
3. **Transcode audio recording.** For this example compress from 16 bit Linear PCM (LPCM-16) to Free Lossless Audio Codec (FLAC). (TBD).
4. **Redact a Sensitive Segment.** Replace a segment with a beep, retaining the time alignment of the recording. Annotate the court order to redact the recording. (TBD)
5. **Enhance Speech Sample.** Here we apply a bandpass filter to reduce HVAC rumble, though many other enhancements, e.g. a 60 Hz notch filter to abate line noise in the recording are also possible. (TBD)
6. **Request Audio Authentication.** Request signal analysis to ascertain if the speech sample is from a continuous recording on a single channel/device without deletions or insertions or switches from other channels. For example, is one part of the signal processed by a GSM Full Rate codec and another part by CDMA Enhanced Variable Rate codec; or was the recording from one geographic location or more than one? (TBD)
7. **Transfer voice sample.** Transfer a voice sample to an archive for storage. (TBD)
8. **Characterize the speech style.** Request characterization of the social/behavioral dynamics in the recording. (TBD)

Chapter 1

Originating a Transaction

In this broad scenario, a previously captured sound file is submitted by the fictional NIST Biometric Police Department (NBPD) for various analysis and processing steps.

1.1 Introduction

The sample contains multiple speakers engaged in face-to-face conversation, and the speech segments have significant overlaps. The transactions will request that the speech be segmented, and the segments be clustered by speakers. The ANSI/NIST transaction records will state a request to the processing laboratory segmenter and give:

- Source surveillance unit
- The recording hardware
- Format of the sound file
- Location of recording
- Date/Time of the transaction, and of the recording.
- Request for segmentation

The originating agency is the NBPD. The latitude/longitude is approximately the NIST front gate in Gaithersburg, Maryland. The time stamps reflect the NIST Meeting Room Data Collection of 2008.

1.2 Segmentation

The segmentations provided throughout the first major scenario are from the NIST Meeting Room Data Collection of 2008, and ground truth was generated by the Linguistics Data Consortium (LDC). This consisted of speaker ID's, start/stop times, spoken words, diarized non-speech sounds, etc.

1.3 Scenarios

The entire process involves a series of transactions.

- The Segmenter updates the transaction and forwards it to the Laboratory for segmenting. A Type-20 Record is included which identifies the NIST Meeting Room file from which the speech sample was extracted.
- The laboratory identifies the segments where there is speech and its multiplicity. If a previous voice sample exists for an individual, that voice sample is included as an additional Type-11 record in the response. A separate Type-2 record is created for each individual speaker, even though there may be no known identity associated with the individual. A single Type-1, multiple Type-2 (one for each speaker), multiple Type-11 (but only if there are speech samples existent for the identified speakers – not from the submitted recording).

1. Originate a recognition transaction (type 1, type 2, and type 11). The originator creates the Type-11 transaction providing the original audio, and requests a speech processing laboratory to
 - (a) Identify any redacted segments (beeps)
 - (b) Identify any discontinuities in the original recording (may be by channel or totally)
 - (c) Identify any 'non-sound' portions of the recording (null data) (May be by channel or totally)
 - (d) Find speech segments (both single speaker and multiple speaker)
2. Transcription
3. Translation from a another language could be performed at this point.

1.4 Request speech transcript (ReqSpeechTrns)

1.4.1 Using Type-11 Container Field 11.013 to request as speech transcript

This transaction begins a Type-11 processing chain. An audio segment is submitted to a processing laboratory to obtain a transcript as response from a local technical processing laboratory. The initial ReqSpeechTrns transaction does not have segments. Here we use the Type-11 Field 11.013 CONTAINER subfields to describe and transport the data. All transactions begin with a Type-1 Record.

Table 1.1: Type-1 Record for Request Speech Transcript (ReqSpeechTrns) Type of Transaction(ToT).

Field No.	Mnemonic	Type-1 Content Description	Character
1.001	none	RECORD HEADER	“PackageInformationRecord”
1.002	VER	VERSION NUMBER	“0501”
1.003	CNT	TRANSACTION CONTENT	None
1.003	FRC	first record category code	“1”
1.003	CRC	content record count	“2”
1.003	REC	record category code	“2”
1.003	IDC	information designation character	“0”
1.003	REC	record category code	“11”
1.003	IDC	information designation character	“1”
1.004	TOT	TYPE OF TRANSACTION	“ReqSpeechTrns”
1.005	DAT	DATE	“20130521”
1.006	PRY	PRIORITY	“9”
1.007	DAI	DESTINATION AGENCY IDENTIFIER	“TechLab01”
1.008	ORI	ORIGINATING AGENCY IDENTIFIER	“NISTBIOMPD01”
1.009	TCN	TRANSACTION CONTROL NUMBER	“T11ReqSpeechTrns001”
1.010	TCR	TRANS. CTL REF. NO.	NONE
1.011	NSR	NATIVE SCANNING RESOLUTION	00.00
1.012	NTR	NOMINAL RESOLUTION	00.00
1.013	DNM	domain name	“Speech”
1.014	GMT	GREENWICH MEAN TIME	“201305201436Z”
1.015	DCS	CHARACTER ENCODING	None
1.015	CSI	character encoding set index	“3”
1.015	CSN	character encoding set name	“UTF-8”

Table 1.2: Type-2 Record for Request Speech Transcript (ReqSpeechTrns) Type of Transaction(ToT).

Field No.	Mnemonic	Type-2 Content Description	Character
2.001		RECORD HEADER	“PackageDescriptiveTextRecord”

2.002	IDC	INFO DESIGNATION CHAR.	"0"
2.003	EXPL	Explanation	"Transcribe Speech Segments"

Table 1.3: Type-11 Record for SegSpeech for Type of Transaction.
AOD of “0” indicates inline storage of container or raw.

11.001		Record Header	“PackageVoiceRecord”
11.002	IDC	INFO. DESIGNATION CHAR.	“1”
11.003	AOD	AUDIO OBJ. DESCRIPTOR CODE	“0”
11.004	SRC	SOURCE AGENCY	“NISTBIOMPD01”
11.005	VRSO	VOICE REC. SOURCE ORG.	None
11.005	STC	SOURCE ORG. TYPE CODE	“G”
11.005	SON	SOURCE ORG. NAME	“NIST PD”
11.005	POC	point of contact	“Vince Stanford”
11.005	CSC	src. org. country code	“US”
11.006	VRC	VIDEO REC. CONTENT DESC.	None
11.006	AVI	assigned voice indicator	“Q”
11.006	SPC	speaker plurality code	“M”
11.006	COM	comment	“Four or five speakers.”
11.007	AREC	AUDIO RECORDING DEVICE	None
11.007	RDD	rec. dev. desc. text	“LDC microphone”
11.007	MAK	rec. dev. make.	“Hammerfall”
11.007	MOD	rec. dev. model	“8PRE/896HD”
11.007	SER	rec. dev. serial number	“UNK”
11.008	AQS	ACQUISITION SOURCE	None
11.008	AQC	acquisition src. code	“14”
11.008	A2D	ADC desc.	“Hammerfall ADAT”
11.009	RCD	REC. CREATION DATE	“20130521”
11.010	VRD	VOICE RECORDING DATE	“200801011405”
11.011	TRD	TOTAL REC. DURATION	None
11.011	TIM	voice rec. time	81000062
11.011	CBY	compressed bytes	2592002
11.011	TSM	total digital samples	1296001
11.012	PMO	PHYSICAL MEDIA OBJECT	None
11.013	CONT	CONTAINER	None
11.013	CONC	container code	“3”
11.014	CDC	CODEC	None
11.015	PSQ	PRELIM. SIGNAL QUALITY	None
11.015	QVU	quality value	“83”
11.015	QAV	quality vendor identification	“1”
11.015	QAP	algorithm product identification	“1”
11.015	COM	comment	“NIST-SNRu/ANSI 3.5-1997”
11.016-020	NONE	Reserved	None
11.021	RED	REDACTION	None
11.021	RDI	redaction indicator	“0”
11.021	RDA	redaction auth. org. name	None
11.021	COM	comment	None
11.022	RDD	REDACTION DIARY	None
11.023	DIS	DISCONTINUITIES	None
11.024	DSD	DISCONTINUITIES DIARY	None
11.025	VOC	VOCAL CONTENT	None
11.025	DII	diarization indicator	“0”
11.026	VCD	VOCAL CONTENT DIARY	None
11.027-031	NONE	Reserved	None
11.032	SGEO	VOCAL SEG. GEO. INFO.	None
11.032	SIL	segment identifier	“0”
11.032	LTD	lat. deg. val.	“39”
11.032	LTM	lat. min. val.	“8”

Field No.	Mnemonic	Type-11 Content Description	Character
11.032	LTS	lat. sec. val.	"16"
11.032	LGD	long. deg. val.	"-77"
11.032	LGM	long. min. val.	"13"
11.032	LGS	lat. sec. val.	"1"
11.032	ELE	elevation	"150"
11.033	SQV	SEG. QUALITY VALS	None
11.034	VCI	VOCAL COLLISION ID.	None
11.035	PPY	PROCESSING PRIORITY	None
11.036	SCN	SEGMENT CONTENT	None
11.037	SCC	SEG. SPEAKER CHAR.	None
11.038	SCH	SEGMENT CHANNEL	None
11.039-050		RESERVED FOR FUTURE	None
11.051	COM	COMMENTS	"First Type-11 Test"
11.052-099	NONE	Reserved	None
11.100-900	UDF	USER-DEFINED FIELDS	User Defined
11.901	NONE	Reserved	None
11.902	ANN	ANNOTATION INFORMATION	None
11.902	GMT	Greenwich Mean Time	"201305200000Z"
11.902	NAV	processing algorithm name/version	"UNK"
11.902	OWN	algorithm owner	"UNK"
11.902	PRO	process description	"Manual extraction 2 minutes of NIST MR archive"
11.902	GMT	Greenwich Mean Time	"201305200000Z"
11.902	NAV	processing algorithm name/version	"sox v12.18.1"
11.902	OWN	algorithm owner	"open source"
11.902	PRO	process description	"created: NIST_20080201-1405_d03_NONE_1620-1701.wav"
11.903-091	NONE	Reserved	None
11.993	SAN	SOURCE NAME AGENCY	"NISTPDO1"
11.994	EFR	EXTERNAL FILE REFERENCE	None
11.995	ASC	ASSOCIATED CONTEXT	None

Field No.	Mnemonic	Type-11 Content Description	Character
11.996	HAS	HASH	'7c38b74448e34d2a60aa02609f9e4539d08e82be6bc339c65c8143e561a6a66c'
11.997	SOR	SOURCE REPRESENTATION	None
11.997	SRN	Src Rep No	"27"
11.998	GEO	GEO. SAMPLE ACQ. LOC.	None
11.998		<i>include in segs</i>	
11.999	DATA	VOICE DATA	2592046 bytes binary before base 64 conv.

Table 1.4: Type 20 Record indicating extraction of current speech sample data from a larger file.

Field No.	Mnemonic	Type-20 Content Description	Character
20.001		RECORD HEADER	“PackageSourceRepresentationRecord”
20.002	IDC	IDC	“4”
20.003	CAR	SRN Cardinality	“D”
20.004	SRC	Source Org	“NISTBIOMPD01”
20.005	SRD	SRC REP. DATE	“201305200000Z”
20.014	AQS	ACQUISITION SOURCE	NONE
20.014	AQT	Acq. Type	“14”
20.015	SFT	Src. Rep Fmt.	NONE
20.015	FTY	File Type	“wav”
20.019	TIX	Time Index	None
20.019	TIS	time index start	“0”
20.019	TIE	time index end	“00:47:18.960”
20.020	COM	Comment	“Subjects aware of recording, consent forms signed”
20.021	SRN	Src Rep Field	“27”
20.994	EFR	External File Ref.	“NIST_MIG:NIST_20080201-1405_h03_255.sph”

1.4.2 Using Type-11 Raw Field 11.014 to request a speech transcript

This transaction begins a Type-11 processing chain. An audio segment is submitted to a processing laboratory to obtain a Speaker Clustering response. The initial ReqSpeechTrn transaction does not have segments. Here we exercise the Type-11 Raw configuration to transport raw data inline with Type-11 Field 11.014 Codec subfields to describe the data as to sample depth, sample rate, compression/decompression (codec) algorithm rather than the Container field. Note that field the 11.996 HAS code refers to the raw data being transported and not the Type-11 as a whole.

Table 1.5: Type-1 Record for SegSpeech Type of Transaction.

Field No.	Mnemonic	Type-1 Content Description	Character
1.001	none	RECORD HEADER	“1”
1.002	VER	VERSION NUMBER	“0501”
1.003	CNT	TRANSACTION CONTENT	None
1.003	FRC	first record category code	“1”
1.003	CRC	content record count	“2”
1.003	REC	record category code	“2”
1.003	IDC	information designation character	“0”
1.003	REC	record category code	“11”
1.003	IDC	information designation character	“1”
1.004	TOT	TYPE OF TRANSACTION	“ReqSpeechTrns”
1.005	DAT	DATE	“201305211436”
1.006	PRY	PRIORITY	“9”
1.007	DAI	DESTINATION AGENCY IDENTIFIER	“CJISVoiceID01”
1.008	ORI	ORIGINATING AGENCY IDENTIFIER	“NISTBIOMPD01”
1.009	TCN	TRANSACTION CONTROL NUMBER	“T11SegSpeech001”
1.010	RCR	TRANS. CTL REF. NO.	NONE
1.011	NSR	NATIVE SCANNING RESOLUTION	00.00
1.012	NTR	NOMINAL RESOLUTION	00.00
1.013	DNM	domain name	“Speech”
1.014	GMT	GREENWICH MEAN TIME	“201305201436Z”
1.015	DCS	CHARACTER ENCODING	None
1.015	CSI	character encoding set index	“3”
1.015	CSN	character encoding set name	“UTF-8”

Table 1.6: Type-2 Record for SegSpeech Type of Transaction.

Field No.	Mnemonic	Type-2 Content Description	Character
2.001		RECORD HEADER	"2"
2.002	IDC	INFO DESIGNATION CHAR.	"0"
2.003	EXPL	Explanation	"Transcribe Speaker Segments"

Table 1.7: Type-11 Record for SegSpeech for Type of Transaction.
AOD of “0” indicates inline storage of container or raw.

11.001		Record Header	“11”
11.002	IDC	INFO. DESIGNATION CHAR.	“1”
11.003	AOD	AUDIO OBJ. DESCRIPTOR CODE	“0”
11.004	SRC	SOURCE AGENCY	“NISTBIOMPD01”
11.005	VRSO	VOICE REC. SOURCE ORG.	None
11.005	STC	SOURCE ORG. TYPE ORG.	“G”
11.005	SON	SOURCE ORG. NAME	“NIST PD”
11.005	POC	point of contact	“Vince Stanford”
11.005	CSC	src. org. country code	“US”
11.006	VRC	VIDEO REC. CONTENT DESC.	None
11.006	AVI	assigned voice indicator	“Q”
11.006	SPC	speaker plurality code	“M”
11.006	COM	comment	“Four or five speakers.”
11.007	AREC	AUDIO RECORDING DEVICE	None
11.007	RDD	rec. dev. desc. text	“LDC microphone”
11.007	MAK	rec. dev. make.	“Hammerfall”
11.007	MOD	rec. dev. model	“8PRE/896HD”
11.007	SER	rec. dev. serial number	“UNK”
11.008	AQS	ACQUISITION SOURCE	None
11.008	AQC	acquisition src. code	“14”
11.008	A2D	ADC desc.	“Hammerfall ADAT”
11.009	RCD	REC. CREATION DATE	“20130521”
11.010	VRD	VOICE RECORDING DATE	“200801011405”
11.011	TRD	TOTAL REC. DURATION	None
11.011	TIM	voice rec. time	81000062
11.011	CBY	compressed bytes	2592002
11.011	TSM	total digital samples	1296001
11.012	PMO	PHYSICAL MEDIA OBJECT	None
11.013	CONT	CONTAINER	None
11.013	CONC	container code	“0”
11.014	CDC	CODEC	None
11.014	CODC	codec code	“0”
11.014	SRTN	sampling rate number	“16000”
11.014	BITD	bit depth country	“16”
11.014	ENDC	endian code	“0”
11.014	FPNT	fixed point indicator	“0”
11.014	CHC	channel count	“1”
11.014	COM	comment	“No ECOD subfield”
11.015	PSQ	PRELIM. SIGNAL QUALITY	None
11.015	QVU	quality value	“83”
11.015	QAV	quality vendor identification	“1”
11.015	QAP	algorithm product identification	“1”
11.015	COM	comment	“NIST-SNRu/ANSI 3.5-1997”
11.016-020	NONE	Reserved	None
11.021	RED	REDACTION	None
11.021	RDI	redaction indicator	“0”
11.021	RDA	redaction auth. org. name	None
11.021	COM	comment	None
11.022	RDD	REDACTION DIARY	None
11.023	DIS	DISCONTINUITIES	None
11.024	DSD	DISCONTINUITIES DIARY	None
11.025	VOC	VOCAL CONTENT	None

Field No.	Mnemonic	Type-11 Content Description	Character
11.025	DII	diarization indicator	"1"
11.025	DAU	diarization authority org. name	"NISTBIOMPD01"
11.025	COM	comments	None
11.026	VCD	VOCAL CONTENT DIARY	None
11.027-031	NONE	Reserved	None
11.032	SGEO	VOCAL SEG. GEO. INFO.	None
11.032	SIL	segment identifier	"0"
11.032	LTD	lat. deg. val.	"39"
11.032	LTM	lat. min. val.	"8"
11.032	LTS	lat. sec. val.	"16"
11.032	LGD	long. deg. val.	"-77"
11.032	LGM	long. min. val.	"13"
11.032	LGS	lat. sec. val.	"1"
11.032	ELE	elevation	"150"
11.033	SQV	SEG. QUALITY VALS	None
11.034	VCI	VOCAL COLLISION ID.	None
11.035	PPY	PROCESSING PRIORITY	None
11.036	SCN	SEGMENT CONTENT	None
11.037	SCC	SEG. SPEAKER CHAR.	None
11.038	SCH	SEGMENT CHANNEL	None
11.039-050		RESERVED FOR FUTURE	None
11.051	COM	COMMENTS	"First Type-11 Test"
11.052-099	NONE	Reserved	None
11.100-900	UDF	USER-DEFINED FIELDS	User Defined
11.901	NONE	Reserved	None
11.902	ANN	ANNOTATION INFORMATION	None
11.902	GMT	Greenwich Mean Time	"201305201436Z"
11.902	NAV	processing algorithm name/version	"unspecified"
11.902	OWN	algorithm owner	"NIST"
11.902	PRO	process description	"Segment & cluster Speakers"
11.903-991	NONE	Reserved	None
11.992	T2C	TYPE-2 RECORD CROSS REF.	"0"
11.993	SAN	SOURCE NAME AGENCY	"NISTPDO1"
11.994	EFR	EXTERNAL FILE REFERENCE	None
11.995	ASC	ASSOCIATED CONTEXT	None

Field No.	Mnemonic	Type-11 Content Description	Character
11.996	HAS	HASH	"7c38b74448e34d2a60aa02609f9e4539d08e82be6bc339c65c8143e561a6a66c"
11.997	SOR	SOURCE REPRESENTATION	None
11.998	GEO	GEO. SAMPLE ACQ. LOC.	None
11.998	UTE	universal time entry	"200801010805Z"
11.998	LTD	latitude degree value	"39"
11.998	LTM	latitude minute value	"8"
11.998	LTS	latitude second value	"16"
11.998	LGD	longitude degree value	"-77"
11.998	LGM	longitude minute value	"13"
11.998	LGS	longitude second value	"1"

Field No.	Mnemonic	Type-11 Content Description	Character
11.999	DATA	VOICE DATA	2592046 bytes NIST_20080201-1405_d03_NONE_1620-1701.raw

1.4.3 Processing capabilities

- Originator
 - Obtain audio
 - Generate the transport records to meet the requirements of the TOT.
 - Transmit the records
- Segmenter/Tech Lab
 - Silence versus non-silence segmentation with timing markers
 - Manual classification of single speaker versus multiple speaker
 - Manual read of speech versus non-speech
 - Transcribe the speech
 - Generate the transport records to meet the requirements of the TOT.
 - Transmit the records

1.5 Processing Tech lab returns segmentation and transcript (RetSpeechTrns) TOT to originating authority

The Type-1 and Type-2 Records are similar to those from Case 1.4 above. And the segmentations and annotation of the Tech Lab processing steps are embodied in the Type-11 Record subfields below

Table 1.8: Type-1 Record for Request Speech Transcript (ReqSpeechTrns) Type of Transaction(ToT).

Field No.	Mnemonic	Type-1 Content Description	Character
1.001	none	RECORD HEADER	"1"
1.002	VER	VERSION NUMBER	"0501"
1.003	CNT	TRANSACTION CONTENT	None
1.003	FRC	first record category code	"1"
1.003	CRC	content record count	"2"
1.003	REC	record category code	"2"
1.003	IDC	information designation character	"0"
1.003	REC	record category code	"11"
1.003	IDC	information designation character	"1"
1.004	TOT	TYPE OF TRANSACTION	"RetSpeechTrns"
1.005	DAT	DATE	"20130521"
1.006	PRY	PRIORITY	"9"
1.007	DAI	DESTINATION AGENCY IDENTIFIER	"NISTBIOMPD01"
1.008	ORI	ORIGINATING AGENCY IDENTIFIER	"TechLab01"
1.009	TCN	TRANSACTION CONTROL NUMBER	"T11RetSpeechTrns001"
1.010	TCR	TRANS. CTL REF. NO.	"T11ReqSpeechTrns001"
1.011	NSR	NATIVE SCANNING RESOLUTION	00.00
1.012	NTR	NOMINAL RESOLUTION	00.00
1.013	DOM	DOMAIN NAME	NONE
1.013	DNM	domain name	"Speech"
1.014	GMT	GREENWICH MEAN TIME	"201305201436Z"
1.015	DCS	CHARACTER ENCODING	None
1.015	CSI	character encoding set index	"3"
1.015	CSN	character encoding set name	"UTF-8"

Table 1.9: Type-2 Record for Request Speech Transcript (ReqSpeechTrns) Type of Transaction(ToT).

Field No.	Mnemonic	Type-2 Content Description	Character
2.001		RECORD HEADER	"2"
2.002	IDC	INFO DESIGNATION CHAR.	"0"
2.003	EXPL	Explanation	"Return Transcribed Speech Segs"

Table 1.10: Type-11 Record with Transcript for Return Speech Transcript Type of Transaction.

11.001		Record Header	"11"
11.002	IDC	INFO. DESIGNATION CHAR.	"1"
11.003	AOD	AUDIO OBJ. DESCRIPTOR CODE	"0"
11.004	SRC	SOURCE AGENCY	"NISTBIOMPD01"
11.005	VRSO	VOICE REC. SOURCE ORG.	None
11.005	STC	SOURCE TYPE ORG.	"G"
11.005	SON	SOURCE ORG. NAME	"NIST PD"
11.005	POC	point of contact	"Vince Stanford"
11.005	CSC	src. org. country code	"US"
11.006	VRC	VIDEO REC. CONTENT DESC.	None
11.006	AVI	assigned voice indicator	"Q"
11.006	SPC	speaker plurality code	"M"
11.006	COM	comment	"Four or five speakers."

Field No.	Mnemonic	Type-11 Content Description	Character
11.007	AREC	AUDIO RECORDING DEVICE	None
11.007	RDD	rec. dev. desc. text	"LDC microphone"
11.007	MAK	rec. dev. make.	"Hammerfall"
11.007	MOD	rec. dev. model	"8PRE/896HD"
11.007	SER	rec. dev. serial number	"UNK"
11.008	AQS	ACQUISITION SOURCE	None
11.008	ACQ	acquisition src. code	"14"
11.008	A2D	ADC desc.	"Hammerfall ADAT"
11.009	RCD	REC. CREATION DATE	"20130521"
11.010	VRD	VOICE RECORDING DATE	"200801011405"
11.011	TRD	TOTAL REC. DURATION	None
11.011	TIM	voice rec. time	81000062
11.011	CBY	compressed bytes	2592002
11.011	TSM	total digital samples	1296001
11.012	PMO	PHYSICAL MEDIA OBJECT	None
11.013	CONT	CONTAINER	None
11.013	CONC	container code	"3"
11.014	CDC	CODEC	None
11.0.15	PSQ	PRELIM. SIGNAL QUAL.	None
11.015	QVU	quality value	"83"
11.015	QAV	quality vendor identification	"1"
11.015	QAP	algorithm product identification	"1"
11.015	COM	comment	"NIST-SNRu/ANSI 3.5-1997"
11.016-020	NONE	Reserved	None
11.021	RED	REDACTION	None
11.021	RDI	redaction indicator	"0"
11.021	RDA	redaction auth. org. name	None
11.021	COM	comment	None
11.022	RDD	REDACTION DIARY	None
11.023	DIS	DISCONTINUITIES	None
11.023	DCI	discontinuity indicator	"2"
11.023	COM	comment	"Unable to ascertain discontinuities"
11.024	DCD	DISCONTINUITIES DIARY	None
11.025	VOC	SEGMENT DIARY	None
11.025	DII	diarization indicator	"1"
11.025	DAU	diarization authority org. name	"NISTBIOMPD01"
11.025	COM	comment	"NIST Biometric Police Dept. is fictional."
11.026	VCD	VOCAL CONTENT DIARY	
11.026	SID	<i>segment identifier</i>	"1"
11.026	TRK	track and channel number list	"1"
11.026	RST	relative start time	"0"
11.026	RET	relative end time	"2855020"
11.026	TST	tagged start time	20080201140500Z
11.026	TET	tagged end time	20080201140529Z
11.026	SRT	segment recording start time	20080201140500Z
11.026	END	segment recording end time	20080201140529Z
11.026	SID	<i>segment identifier</i>	"2"
11.026	TRK	track and channel number list	"1"
11.026	RST	relative start time	"2530177"
11.026	RET	relative end time	"3082909"
11.026	SID	<i>segment identifier</i>	"3"
11.026	TRK	track and channel number list	"1"
11.026	RST	relative start time	"3297331"

Field No.	Mnemonic	Type-11 Content Description	Character
11.026	RET	relative end time	"3621346"
11.026	SID	segment identifier	"4"
11.026	TRK	track and channel number list	"1"
11.026	RST	relative start time	"3589420"
11.026	RET	relative end time	"6875690"
11.026	SID	segment identifier	"5"
11.026	TRK	track and channel number list	"1"
11.026	RST	relative start time	"3589420"
11.026	RET	relative end time	"6875690"
11.026	SID	segment identifier	"6"
11.026	TRK	track and channel number list	"1"
11.026	RST	relative start time	"3788119"
11.026	RET	relative end time	"4207433"
11.026	SID	segment identifier	"7"
11.026	TRK	track and channel number list	"1"
11.026	RST	relative start time	"5816686"
11.026	RET	relative end time	"6398354"
11.026	TRN	transcript text	"Mhm."
11.026	LNG	transcript lang.	"eng"
11.026	SID	segment identifier	"8"
11.026	TRK	track and channel number list	"1"
11.026	RST	relative start time	"6347607"
11.026	RET	relative end time	"9902408"
11.026	SID	segment identifier	"9"
11.026	TRK	track and channel number list	"1"
11.026	RST	relative start time	"6.372795"
11.026	RET	relative end time	"9.823677"
11.026	SID	segment identifier	"10"
11.026	TRK	track and channel number list	"1"
11.026	RST	relative start time	"8727959"
11.026	RET	relative end time	"9621111"
11.026	SID	segment identifier	"11"
11.026	TRK	track and channel number list	"1"
11.026	RST	relative start time	"8753148"
11.026	RET	relative end time	"9684696"
11.026	SID	segment identifier	"12"
11.026	TRK	track and channel number list	"1"
11.026	RST	relative start time	"9496221"
11.026	RET	relative end time	"10377833"
11.026	SID	segment identifier	"13"
11.026	TRK	track and channel number list	"1"
11.026	RST	relative start time	"9949622"
11.026	RET	relative end time	"12027706"
11.026	SID	segment identifier	"14"
11.026	TRK	track and channel number list	"1"
11.026	RST	relative start time	"9949622"
11.026	RET	relative end time	"12027707"
11.026	SID	segment identifier	"15"
11.026	TRK	track and channel number list	"1"
11.026	RST	relative start time	"12531486"
11.026	RET	relative end time	"14180918"
11.026	SID	segment identifier	"16"
11.026	TRK	track and channel number list	"1"

Field No.	Mnemonic	Type-11 Content Description	Character
11.026	RST	relative start time	"12852908"
11.026	RET	relative end time	"13311815"
11.026	SID	segment identifier	"17"
11.026	TRK	track and channel number list	"1"
11.026	RST	relative start time	"13488664"
11.026	RET	relative end time	"16325171"
11.026	SID	segment identifier	"18"
11.026	TRK	track and channel number list	"1"
11.026	RST	relative start time	"16234256"
11.026	RET	relative end time	"16863979"
11.026	SID	segment identifier	"19"
11.026	TRK	track and channel number list	"1"
11.026	RST	relative start time	"16360201"
11.026	RET	relative end time	"36935248"
11.026	SID	segment identifier	"20"
11.026	TRK	track and channel number list	"1"
11.026	RST	relative start time	"17351509"
11.026	RET	relative end time	"19924433"
11.026	SID	segment identifier	"21"
11.026	TRK	track and channel number list	"1"
11.026	RST	relative start time	"19319899"
11.026	RET	relative end time	"21330408"
11.026	SID	segment identifier	"22"
11.026	TRK	track and channel number list	"1"
11.026	RST	relative start time	"19811083"
11.026	RET	relative end time	"21032745"
11.026	SID	segment identifier	"23"
11.026	TRK	track and channel number list	"1"
11.026	RST	relative start time	"21330408"
11.026	RET	relative end time	"25894205"
11.026	SID	segment identifier	"24"
11.026	TRK	track and channel number list	"1"
11.026	RST	relative start time	"24496221"
11.026	RET	relative end time	"25062971"
11.026	SID	segment identifier	"25"
11.026	TRK	track and channel number list	"1"
11.026	RST	relative start time	"24836798"
11.026	RET	relative end time	"25643487"
11.026	SID	segment identifier	"26"
11.026	TRK	track and channel number list	"1"
11.026	RST	relative start time	"25654911"
11.026	RET	relative end time	"26297229"
11.026	SID	segment identifier	"27"
11.026	TRK	track and channel number list	"1"
11.026	RST	relative start time	"25793449"
11.026	RET	relative end time	"28727959"
11.026	SID	segment identifier	"28"
11.026	TRK	track and channel number list	"1"
11.026	RST	relative start time	"28828715"
11.026	RET	relative end time	"29552232"
11.026	SID	segment identifier	"29"
11.026	TRK	track and channel number list	"1"
11.026	RST	relative start time	"29168764"

Field No.	Mnemonic	Type-11 Content Description	Character
11.026	RET	relative end time	"32216623"
11.026	SID	segment identifier	"30"
11.026	TRK	track and channel number list	"1"
11.026	RST	relative start time	"30025188"
11.026	RET	relative end time	"30705288"
11.026	SID	segment identifier	"31"
11.026	TRK	track and channel number list	"1"
11.026	RST	relative start time	"32418136"
11.026	RET	relative end time	"35277078"
11.026	SID	segment identifier	"32"
11.026	TRK	track and channel number list	"1"
11.026	RST	relative start time	35906801"
11.026	RET	relative end time	37229219"
11.026	SID	segment identifier	"33"
11.026	TRK	track and channel number list	"1"
11.026	RST	relative start time	"37795969"
11.026	RET	relative end time	"39647355"
11.026	SID	segment identifier	"34"
11.026	TRK	track and channel number list	"1"
11.026	RST	relative start time	"40062971"
11.026	RET	relative end time	"40.591938"
11.026	SID	segment identifier	"35"
11.026	TRK	track and channel number list	"1"
11.026	RST	relative start time	"40099881"
11.026	RET	relative end time	"40443594"
11.026	SID	segment identifier	"36"
11.026	TRK	track and channel number list	"1"
11.026	RST	relative start time	"40604534"
11.026	RET	relative end time	"41360200"
11.026	SID	segment identifier	"37"
11.026	TRK	track and channel number list	"1"
11.026	RST	relative start time	"40617128"
11.026	RET	relative end time	"42918212"
11.026	SID	segment identifier	"38"
11.026	TRK	track and channel number list	"1"
11.026	RST	relative start time	"42556675"
11.026	RET	relative end time	"46305695"
11.026	SID	segment identifier	"39"
11.026	TRK	track and channel number list	"1"
11.026	RST	relative start time	"44219143"
11.026	RET	relative end time	"45088160"
11.026	SID	segment identifier	"40"
11.026	TRK	track and channel number list	"1"
11.026	RST	relative start time	"45453400"
11.026	RET	relative end time	"53015053"
11.026	SID	segment identifier	"41"
11.026	TRK	track and channel number list	"1"
11.026	RST	relative start time	"49307303"
11.026	RET	relative end time	"51675062"
11.026	SID	segment identifier	"42"
11.026	TRK	track and channel number list	"1"
11.026	RST	relative start time	"50000000"
11.026	RET	relative end time	"50453400"

Field No.	Mnemonic	Type-11 Content Description	Character
11.026	SID	segment identifier	"43"
11.026	TRK	track and channel number list	"1"
11.026	RST	relative start time	"53312341"
11.026	RET	relative end time	"54130981"
11.026	SID	segment identifier	"44"
11.026	TRK	track and channel number list	"1"
11.026	RST	relative start time	"53417433"
11.026	RET	relative end time	"56837876"
11.026	SID	segment identifier	"45"
11.026	TRK	track and channel number list	"1"
11.026	RST	relative start time	"55100755"
11.026	RET	relative end time	"57657429"
11.026	SID	segment identifier	"46"
11.026	TRK	track and channel number list	"1"
11.026	RST	relative start time	"56991236"
11.026	RET	relative end time	"57518364"
11.026	SID	segment identifier	"47"
11.026	TRK	track and channel number list	"1"
11.026	RST	relative start time	"57115868"
11.026	RET	relative end time	"59408059"
11.026	SID	segment identifier	"48"
11.026	TRK	track and channel number list	"1"
11.026	RST	relative start time	"57833750"
11.026	RET	relative end time	"59899243"
11.026	SID	segment identifier	"49"
11.026	TRK	track and channel number list	"1"
11.026	RST	relative start time	"59490714"
11.026	RET	relative end time	"63740553"
11.026	SID	segment identifier	"50"
11.026	TRK	track and channel number list	"1"
11.026	RST	relative start time	"59949622"
11.026	RET	relative end time	"60896357"
11.026	SID	segment identifier	"51"
11.026	TRK	track and channel number list	"1"
11.026	RST	relative start time	"61701679"
11.026	RET	relative end time	"62.556675"
11.026	SID	segment identifier	"52"
11.026	TRK	track and channel number list	"1"
11.026	RST	relative start time	"61931931"
11.026	RET	relative end time	"63324937"
11.026	SID	segment identifier	"53"
11.026	TRK	track and channel number list	"1"
11.026	RST	relative start time	"64168764"
11.026	RET	relative end time	"65541561"
11.026	SID	segment identifier	"54"
11.026	TRK	track and channel number list	"1"
11.026	RST	relative start time	"65138539"
11.026	RET	relative end time	"69.625121"
11.026	SID	segment identifier	"55"
11.026	TRK	track and channel number list	"1"
11.026	RST	relative start time	"65314861"
11.026	RET	relative end time	"65957178"
11.026	SID	segment identifier	"56"

Field No.	Mnemonic	Type-11 Content Description	Character
11.026	TRK	track and channel number list	"1"
11.026	RST	relative start time	"68551637"
11.026	RET	relative end time	"69.168764"
11.026	SID	segment identifier	"57"
11.026	TRK	track and channel number list	"1"
11.026	RST	relative start time	"68891687"
11.026	RET	relative end time	"70226699"
11.026	SID	segment identifier	"58"
11.026	TRK	track and channel number list	"1"
11.026	RST	relative start time	"69800389"
11.026	RET	relative end time	"71032744"
11.026	SID	segment identifier	"59"
11.026	TRK	track and channel number list	"1"
11.026	RST	relative start time	"70162673"
11.026	RET	relative end time	"72191434"
11.026	SID	segment identifier	"60"
11.026	TRK	track and channel number list	"1"
11.026	RST	relative start time	"72108081"
11.026	RET	relative end time	"73546738"
11.026	SID	segment identifier	"61"
11.026	TRK	track and channel number list	"1"
11.026	RST	relative start time	"72141057"
11.026	RET	relative end time	"72720403"
11.026	SID	segment identifier	"62"
11.026	TRK	track and channel number list	"1"
11.026	RST	relative start time	"73198992"
11.026	RET	relative end time	"75042016"
11.026	SID	segment identifier	"63"
11.026	TRK	track and channel number list	"1"
11.026	RST	relative start time	"73463475"
11.026	RET	relative end time	"73979847"
11.026	SID	segment identifier	"64"
11.026	TRK	track and channel number list	"1"
11.026	RST	relative start time	"73787730"
11.026	RET	relative end time	"75920155"
11.026	SID	segment identifier	"65"
11.026	TRK	track and channel number list	"1"
11.026	RST	relative start time	"75037782"
11.026	RET	relative end time	"75680100"
11.026	SID	segment identifier	"66"
11.026	TRK	track and channel number list	"1"
11.026	RST	relative start time	"75491183"
11.026	RET	relative end time	"76183878"
11.026	SID	segment identifier	"67"
11.026	TRK	track and channel number list	"1"
11.026	RST	relative start time	"75528966"
11.026	RET	relative end time	"78236775"
11.026	SID	segment identifier	"68"
11.026	TRK	track and channel number list	"1"
11.026	RST	relative start time	"76584712"
11.026	RET	relative end time	"77934508"
11.026	SID	segment identifier	"69"
11.026	TRK	track and channel number list	"1"

Field No.	Mnemonic	Type-11 Content Description	Character
11.026	RST	relative start time	"78702770"
11.026	RET	relative end time	"83.186396"
11.026	SID	segment identifier	"70"
11.026	TRK	track and channel number list	"1"
11.026	RST	relative start time	"80062971"
11.026	RET	relative end time	"80755667"
11.026	TRN	transcript text	"A month?"
11.026	LNG	transcript lang.	"eng"
11.026	SID	segment identifier	"71"
11.026	TRK	track and channel number list	"1"
11.026	RST	relative start time	"80062971"
11.026	RET	relative end time	"0.7556670"
11.032	SGEO	VOCAL SEG. GEO. INFO.	None
11.032	SIL	segment identifier	"0"
11.032	LTD	lat. deg. val.	"39"
11.032	LTM	lat. min. val.	"8"
11.032	LTS	lat. sec. val.	"16"
11.032	LGD	long. deg. val.	"-77"
11.032	LGM	long. min. val.	"13"
11.032	LGS	lat. sec. val.	"1"
11.032	ELE	elevation	"150"
11.033	SQV	SEG. QUALITY VALS	None
11.033	SIL	segment identifier	"0"
11.033	QVU	quality value	"83"
11.033	QAV	algorithm vendor ID	"NIST"
11.033	QAP	algorithm	"NIST-SNRv2013/ANSI 3.5-1997"
11.034	VCI	VOCAL COLLISION ID.	"4,5,8,9,12,13,17,23,37,40,45,49,62,70"
11.035	PPY	PROCESSING PRIORITY	None
11.036	SCD	VOC. SEG. CONTENT DESC.	None
11.036	SID	segment identifier	"1"
11.036	TRN	transcript text	"...grets only simplifies it, they only say they can't."
11.036	LNG	transcript lang.	"eng"
11.036	SID	segment identifier	"2"
11.036	TRN	transcript text	"Mhm."
11.036	LNG	transcript lang.	"eng"
11.036	SID	segment identifier	"3"
11.036	TRN	transcript text	"Hm."
11.036	LNG	transcript lang.	"eng"
11.036	SID	segment identifier	"4"
11.036	TRN	transcript text	"Instead of saying I will or I won't..."
11.036	LNG	transcript lang.	"eng"
11.036	SID	segment identifier	"5"
11.036	TRN	transcript text	"I don't know."
11.036	LNG	transcript lang.	"eng"
11.036	SID	segment identifier	"6"
11.036	TRN	transcript text	"Okay."
11.036	LNG	transcript lang.	"eng"
11.036	SID	segment identifier	"7"
11.036	TRN	transcript text	"Mhm."
11.036	LNG	transcript lang.	"eng"
11.036	SID	segment identifier	"8"
11.036	TRN	transcript text	"People are always bad with _R_S_V_P."
11.036	LNG	transcript lang.	"eng"

Field No.	Mnemonic	Type-11 Content Description	Character
11.036	SID	segment identifier	"9"
11.036	TRN	transcript text	"Most people do not respond to _R _S _V _P."
11.036	LNG	transcript lang.	"eng"
11.036	SID	segment identifier	"10"
11.036	TRN	transcript text	"Oh no."
11.036	LNG	transcript lang.	"eng"
11.036	SID	segment identifier	"11"
11.036	TRN	transcript text	"Anyway."
11.036	LNG	transcript lang.	"eng"
11.036	SID	segment identifier	"12"
11.036	TRK	track and channel number list	"1"
11.036	LNG	transcript lang.	"eng"
11.036	SID	segment identifier	"13"
11.036	TRN	transcript text	"But I'd go ahead and count them in because."
11.036	LNG	transcript lang.	"eng"
11.036	SID	segment identifier	"14"
11.036	TRN	transcript text	"You never know."
11.036	LNG	transcript lang.	"eng"
11.036	SID	segment identifier	"15"
11.036	TRN	transcript text	"Just in case they change their mind."
11.036	LNG	transcript lang.	"eng"
11.036	SID	segment identifier	"16"
11.036	TRN	transcript text	"Yeah."
11.036	LNG	transcript lang.	"eng"
11.036	SID	segment identifier	"17"
11.036	TRN	transcript text	"It is nice that they do let you know."
11.036	LNG	transcript lang.	"eng"
11.036	SID	segment identifier	"18"
11.036	TRN	transcript text	"Yeah."
11.036	LNG	transcript lang.	"eng"
11.036	SID	segment identifier	"19"
11.036	TRN	transcript text	"But"
11.036	LNG	transcript lang.	"eng"
11.036	SID	segment identifier	"20"
11.036	TRN	transcript text	"people generally do not respond to"
11.036	LNG	transcript lang.	"eng"
11.036	SID	segment identifier	"21"
11.036	TRN	transcript text	"The nice thing about bringing food"
11.036	LNG	transcript lang.	"eng"
11.036	SID	segment identifier	"22"
11.036	TRN	transcript text	"Yeah it's true. "
11.036	LNG	transcript lang.	"eng"
11.036	SID	segment identifier	"23"
11.036	TRN	transcript text	"If everybody's bringing something..."
11.036	LNG	transcript lang.	"eng"
11.036	SID	segment identifier	"24"
11.036	TRN	transcript text	"Yeah."
11.036	LNG	transcript lang.	"eng"
11.036	SID	segment identifier	"25"
11.036	TRN	transcript text	"Yeah."
11.036	LNG	transcript lang.	"eng"
11.036	SID	segment identifier	"26"

Field No.	Mnemonic	Type-11 Content Description	Character
11.036	TRN	transcript text	"That's true."
11.036	LNG	transcript lang.	"eng"
11.036	SID	segment identifier	"27"
11.036	TRN	transcript text	"Oh, if we do cater it would be..."
11.036	LNG	transcript lang.	"eng"
11.036	SID	segment identifier	"28"
11.036	TRN	transcript text	"Yes."
11.036	LNG	transcript lang.	"eng"
11.036	SID	segment identifier	"29"
11.036	TRN	transcript text	"And make sure they're there. So maybe... "
11.036	LNG	transcript lang.	"eng"
11.036	SID	segment identifier	"30"
11.036	TRN	transcript text	"Yeah."
11.036	LNG	transcript lang.	"eng"
11.036	SID	segment identifier	"31"
11.036	TRN	transcript text	"Which makes me think should we make a list..."
11.036	LNG	transcript lang.	"eng"
11.036	SID	segment identifier	"32"
11.036	TRN	transcript text	"and I guess we can't say"
11.036	LNG	transcript lang.	"eng"
11.036	SID	segment identifier	"33"
11.036	TRN	transcript text	"you know you have to bring this, but"
11.036	LNG	transcript lang.	"eng"
11.036	SID	segment identifier	"34"
11.036	TRN	transcript text	"Yeah."
11.036	LNG	transcript lang.	"eng"
11.036	SID	segment identifier	"35"
11.036	TRN	transcript text	"Yeah."
11.036	LNG	transcript lang.	"eng"
11.036	SID	segment identifier	"36"
11.036	TRN	transcript text	"maybe"
11.036	LNG	transcript lang.	"eng"
11.036	SID	segment identifier	"37"
11.036	TRN	transcript text	"We just have a recommended uh"
11.036	LNG	transcript lang.	"eng"
11.036	SID	segment identifier	"38"
11.036	TRN	transcript text	"like a main dish or, like they do when... "
11.036	LNG	transcript lang.	"eng"
11.036	SID	segment identifier	"39"
11.036	TRN	transcript text	"category."
11.036	LNG	transcript lang.	"eng"
11.036	SID	segment identifier	"40"
11.036	TRN	transcript text	"Or we can write on the invitation that..."
11.036	LNG	transcript lang.	"eng"
11.036	SID	segment identifier	"41"
11.036	TRN	transcript text	"Yeah, that's what I was thinking."
11.036	LNG	transcript lang.	"eng"
11.036	SID	segment identifier	"42"
11.036	TRN	transcript text	"Mhm."
11.036	LNG	transcript lang.	"eng"
11.036	SID	segment identifier	"43"
11.036	TRN	transcript text	"That's true."
11.036	LNG	transcript lang.	"eng"

Field No.	Mnemonic	Type-11 Content Description	Character
11.036	SID	segment identifier	"44"
11.036	TRN	transcript text	"So then maybe more people will be do it"
11.036	LNG	transcript lang.	"eng"
11.036	SID	segment identifier	"45"
11.036	TRN	transcript text	"That they would. More %uh... "
11.036	LNG	transcript lang.	"eng"
11.036	SID	segment identifier	"46"
11.036	TRN	transcript text	"Yeah."
11.036	LNG	transcript lang.	"eng"
11.036	SID	segment identifier	"47"
11.036	TRN	transcript text	"Oh that's true and they might be..."
11.036	LNG	transcript lang.	"eng"
11.036	SID	segment identifier	"48"
11.036	TRN	transcript text	"There's a way to put it, yeah."
11.036	LNG	transcript lang.	"eng"
11.036	SID	segment identifier	"49"
11.036	TRN	transcript text	"Yeah I mean there's a nice way to word it..."
11.036	LNG	transcript lang.	"eng"
11.036	SID	segment identifier	"50"
11.036	TRN	transcript text	"Let's go."
11.036	LNG	transcript lang.	"eng"
11.036	SID	segment identifier	"51"
11.036	TRN	transcript text	"Yeah."
11.036	LNG	transcript lang.	"eng"
11.036	SID	segment identifier	"52"
11.036	TRN	transcript text	"I've seen it done."
11.036	LNG	transcript lang.	"eng"
11.036	SID	segment identifier	"53"
11.036	TRN	transcript text	"Yeah that's a good idea."
11.036	LNG	transcript lang.	"eng"
11.036	SID	segment identifier	"54"
11.036	TRN	transcript text	"Where basically if you don't _R _S _V _P..."
11.036	LNG	transcript lang.	"eng"
11.036	SID	segment identifier	"55"
11.036	TRN	transcript text	"Mhm."
11.036	LNG	transcript lang.	"eng"
11.036	SID	segment identifier	"56"
11.036	TRN	transcript text	"Right."
11.036	LNG	transcript lang.	"eng"
11.036	SID	segment identifier	"57"
11.036	TRN	transcript text	"Right exactly."
11.036	LNG	transcript lang.	"eng"
11.036	SID	segment identifier	"58"
11.036	TRN	transcript text	"So. {laugh"
11.036	LNG	transcript lang.	"eng"
11.036	SID	segment identifier	"59"
11.036	TRN	transcript text	"Well, come on ^Rachel. {laugh {lipsmack"
11.036	LNG	transcript lang.	"eng"
11.036	SID	segment identifier	"60"
11.036	TRN	transcript text	"Well I mean that's how it"
11.036	LNG	transcript lang.	"eng"
11.036	SID	segment identifier	"61"
11.036	TRN	transcript text	"So how"

Field No.	Mnemonic	Type-11 Content Description	Character
11.036	LNG	transcript lang.	"eng"
11.036	SID	segment identifier	"62"
11.036	TRN	transcript text	"That's very good let's go with that. "
11.036	LNG	transcript lang.	"eng"
11.036	SID	segment identifier	"63"
11.036	TRN	transcript text	"Yeah."
11.036	LNG	transcript lang.	"eng"
11.036	SID	segment identifier	"64"
11.036	TRN	transcript text	"it makes people"
11.036	LNG	transcript lang.	"eng"
11.036	SID	segment identifier	"65"
11.036	TRN	transcript text	"I know."
11.036	LNG	transcript lang.	"eng"
11.036	SID	segment identifier	"66"
11.036	TRN	transcript text	"Yeah."
11.036	LNG	transcript lang.	"eng"
11.036	SID	segment identifier	"67"
11.036	TRN	transcript text	"So how far ahead will we want to mail... "
11.036	LNG	transcript lang.	"eng"
11.036	SID	segment identifier	"68"
11.036	TRN	transcript text	" _ R _ S _ V _ P."
11.036	LNG	transcript lang.	"eng"
11.036	SID	segment identifier	"69"
11.036	TRN	transcript text	"At least, %um because you're hitting... "
11.036	LNG	transcript lang.	"eng"
11.036	SID	segment identifier	"70"
11.036	TRN	transcript text	"A month?"
11.036	LNG	transcript lang.	"eng"
11.036	SID	segment identifier	"71"
11.036	TRN	transcript text	"A month"
11.036	LNG	transcript lang.	"eng"
11.037	SCC	SEG. SPEAKER CHAR.	None
11.038	SCH	SEGMENT CHANNEL	None
11.039-050		RESERVED FOR FUTURE	None
11.051	COM	COMMENTS	"First Type-11 Test"
11.052-099	NONE	Reserved	None
11.100-900	UDF	USER-DEFINED FIELDS	User Defined
11.901	NONE	Reserved	None
11.902	ANN	ANNOTATION INFORMATION	None
11.902	GMT	Greenwich Mean Time	"201305201436Z"
11.902	NAV	processing algorithm name/version	"unspecified"
11.902	OWN	algorithm owner	"NIST"
11.902	PRO	process description	"Segment & cluster Speakers"
11.903-091	NONE	Reserved	None
11.992	T2C	TYPE-2 RECORD CROSS REF.	"0"
11.993	SAN	SOURCE NAME AGENCY	"NISTPDO1"
11.994	EFR	EXTERNAL FILE REFERENCE	None
11.995	ASC	ASSOCIATED CONTEXT	None

Field No.	Mnemonic	Type-11 Content Description	Character
11.996	HAS	HASH	'7c38b744448e34d2a60aa02609f9e4539d08e82be6bc339c65c8143e561a6a66c'
11.997	SOR	SOURCE REPRESENTATION	None
11.998	GEO	GEO. SAMPLE ACQ. LOC.	None
11.998	UTE	universal time entry	"200801010805Z"
11.998	LTD	latitude degree value	"39"
11.998	LTM	latitude minute value	"8"
11.998	LTS	latitude second value	"16"
11.998	LGD	longitude degree value	"77"
11.998	LGM	longitude minute value	"13"
11.998	LGS	longitude second value	"1"

Field No.	Mnemonic	Type-11 Content Description	Character
11.999	DATA	VOICE DATA	2592046 bytes from file NIST_20080201-1405_d03_NONE_1620-1701.wav.

Chapter 2

Identification Oriented Transactions

2.1 Transactions that prepare for recognition of a speaker

The first transaction necessary to move to speaker identification is the clustering of the segments provided in the RetSpeechTrns of Section 1.5, which was returned to the originating authority by the Tech Processing Lab.

2.2 Transactions required to complete a match

The laboratory performing the matching identifies the speakers as separate individuals. A separate Type-2 record is created for each individual speaker, even though there may be no known identity associated with the individual. Type-1 Multiple Type-2 (one for each speaker) Multiple Type-11 The entire process involves a series of transactions to accomplish, including:

- Updating the originating transaction with an ID request
 - Type-1 Record
 - Type-2 Record
 - Type-11 Record
- A segmentation transaction records?
 - Type-1 Record
 - Type-2 Record
 - Type-11 Record
- Speech Lab matching results
- Return transaction(s) to the originating law enforcement agency with match results.

2.3 Processing entity capabilities

This section notes the hypothesized capabilities of the processing entities... Should be updated when the initial transaction suite is developed.

These include:

- Clustering segmented speech.
- Enrolling a selected speaker for recognition

2.4 Return Speaker Clustering (ReqSpkClust)

This transaction presupposes the segments provided in the RetSpeechTrns of Section 1.5 and requests an advanced processing laboratory to find the number of speakers in the segments and to label each segment as to speaker.

The Type-1 and Type-2 Records are changed from Section 1.5

Table 2.1: Type-1 Record for ReqSpeakerClustering TOT

Field No.	Mnemonic	Type-1 Content Description	Character
1.001	none	RECORD HEADER	"1"
1.002	VER	VERSION NUMBER	"0501"
1.003	CNT	TRANSACTION CONTENT	None
1.003	FRC	first record category code	"1"
1.003	CRC	content record count	"6"
1.003	REC	record category code	"2"
1.003	IDC	information designation character	"0"
1.003	REC	record category code	"2"
1.003	IDC	information designation character	"1"
1.003	REC	record category code	"2"
1.003	IDC	information designation character	"2"
1.003	REC	record category code	"2"
1.003	IDC	information designation character	"3"
1.003	REC	record category code	"2"
1.003	IDC	information designation character	"4"
1.003	REC	record category code	"11"
1.003	IDC	information designation character	"5"
1.004	TOT	TYPE OF TRANSACTION	"RetSpkClust"
1.005	DAT	DATE	"20130521"
1.006	PRY	PRIORITY	"9"
1.007	DAI	DESTINATION AGENCY IDENTIFIER	"NISTBIOMPD01"
1.008	ORI	ORIGINATING AGENCY IDENTIFIER	"TechLab01"
1.009	TCN	TRANSACTION CONTROL NUMBER	"T11RetSpkClust001"
1.010	TCR	TRANS. CTL REF. NO.	"T11RetSpeechTrns001"
1.011	NSR	NATIVE SCANNING RESOLUTION	00.00
1.012	NTR	NOMINAL RESOLUTION	00.00
1.013	DOM	DOMAIN NAME	NONE
1.013	DNM	domain name	"Speech"
1.014	GMT	GREENWICH MEAN TIME	"201305201436Z"
1.015	DCS	CHARACTER ENCODING	None
1.015	CSI	character encoding set index	"3"
1.015	CSN	character encoding set name	"UTF-8"

Table 2.2: Type-2 Record for ReqSpeakerClustering TOT

Field No.	Mnemonic	Type-2 Content Description	Character
2.001		RECORD HEADER	"2"
2.002	IDC	INFO DESIGNATION CHAR.	"0"
2.003	EXPL	Explanation	"Speaker = NIST MR Spk 253"

Table 2.3: Type-2 Record for ReqSpeakerClustering TOT

Field No.	Mnemonic	Type-2 Content Description	Character
2.001		RECORD HEADER	"2"
2.002	IDC	INFO DESIGNATION CHAR.	"1"
2.003	EXPL	Explanation	"Speaker = NIST MR Spk 254"

Table 2.4: Type-2 Record for ReqSpeakerClustering TOT

Field No.	Mnemonic	Type-2 Content Description	Character
-----------	----------	----------------------------	-----------

2.001		RECORD HEADER	“2”
2.002	IDC	INFO DESIGNATION CHAR.	“2”
2.003	EXPL	Explanation	“Speaker = NIST MR Spk 255”

Table 2.5: Type-2 Record for ReqSpeakerClustering TOT

Field No.	Mnemonic	Type-2 Content Description	Character
2.001		RECORD HEADER	“2”
2.002	IDC	INFO DESIGNATION CHAR.	“3”
2.003	EXPL	Explanation	“Speaker = NIST MR Spk 256”

Table 2.6: Type-2 Record for ReqSpeakerClustering TOT

Field No.	Mnemonic	Type-2 Content Description	Character
2.001		RECORD HEADER	“2”
2.002	IDC	INFO DESIGNATION CHAR.	“4”
2.003	EXPL	Explanation	“Speaker = NIST MR Spk 257”

Table 2.7: Type-11 Record with Clustered Transcript Segments.

11.001		Record Header	“11”
11.002	IDC	INFO. DESIGNATION CHAR.	“5”
11.003	AOD	AUDIO OBJ. DESC. CODE	“0”
11.004	SRC	SOURCE AGENCY	“NISTBIOMPD01”
11.005	VRSO	VOICE REC. SOURCE ORG.	None
11.005	STC	SOURCE TYPE ORG.	“G”
11.005	SON	SOURCE ORG. NAME	“NIST PD”
11.005	POC	point of contact	“Vince Stanford”
11.005	CSC	src. org. country code	“US”
11.006	VRC	VID. REC. CONTENT DESC.	None
11.006	AVI	assigned voice indicator	“Q”
11.006	SPC	speaker plurality code	“M”
11.006	COM	comment	“Four or five speakers.”
11.007	AREC	AUDIO RECORDING DEV.	None
11.007	RDD	rec. dev. desc. text	“LDC microphone”
11.007	MAK	rec. dev. make.	“Hammerfall”
11.007	MOD	rec. dev. model	“8PRE/896HD”
11.007	SER	rec. dev. serial number	“UNK”
11.008	AQS	ACQUISITION SOURCE	None
11.008	ACQ	acquisition src. code	“14”
11.008	A2D	ADC desc.	“Hammerfall ADAT”
11.009	RCD	REC. CREATION DATE	“20130521”
11.010	VRD	VOICE RECORDING DATE	“200801011405”
11.011	TRD	TOTAL REC. DURATION	None
11.011	TIM	voice rec. time	81000062
11.011	CBY	compressed bytes	2592002
11.011	TSM	total digital samples	1296001
11.012	PMO	PHYSICAL MEDIA OBJECT	None
11.013	CONT	CONTAINER	None
11.013	CONC	container code	“3”
11.014	CDC	CODEC	None
11.0.15	PSQ	PRELIM. SIGNAL QUAL.	None

Field No.	Mnemonic	Type-11 Content Description	Character
11.015	QVU	quality value	"83"
11.015	QAV	quality vendor identification	"1"
11.015	QAP	algorithm product identification	"1"
11.015	COM	comment	"NIST-SNRu/ANSI 3.5-1997"
11.016-020	NONE	Reserved	None
11.021	RED	REDACTION	None
11.021	RDI	redaction indicator	"0"
11.021	RDA	redaction auth. org. name	None
11.021	COM	comment	None
11.022	RDD	REDACTION DIARY	None
11.023	DIS	DISCONTINUITIES	None
11.023	DCI	discontinuity indicator	"2"
11.023	COM	comment	"Unable to ascertain discontinuities"
11.024	DCD	DISCONTINUITIES DIARY	None
11.025	VOC	SEGMENT DIARY	None
11.025	DII	diarization indicator	"1"
11.025	DAU	diarization authority org. name	"NISTBIOMPD01"
11.025	COM	comment	"NIST Biometric Police Dept. is fictional."
11.026	VCD	VOCAL CONTENT DIARY	None
11.026	SID	<i>segment identifier</i>	"1"
11.026	TRK	track and channel number list	"1"
11.026	RST	relative start time	"0"
11.026	RET	relative end time	"2855020"
11.026	TST	tagged start time	20080201140500Z
11.026	TET	tagged end time	20080201140529Z
11.026	SRT	segment recording start time	20080201140500Z
11.026	END	segment recording end time	20080201140529Z
11.026	SID	<i>segment identifier</i>	"2"
11.026	TRK	track and channel number list	"1"
11.026	RST	relative start time	"2530177"
11.026	RET	relative end time	"3082909"
11.026	SID	<i>segment identifier</i>	"3"
11.026	TRK	track and channel number list	"1"
11.026	RST	relative start time	"3297331"
11.026	RET	relative end time	"3621346"
11.026	SID	<i>segment identifier</i>	"4"
11.026	TRK	track and channel number list	"1"
11.026	RST	relative start time	"3589420"
11.026	RET	relative end time	"6875690"
11.026	SID	<i>segment identifier</i>	"5"
11.026	TRK	track and channel number list	"1"
11.026	RST	relative start time	"3589420"
11.026	RET	relative end time	"6875690"
11.026	SID	<i>segment identifier</i>	"6"
11.026	TRK	track and channel number list	"1"
11.026	RST	relative start time	"3788119"
11.026	RET	relative end time	"4207433"
11.026	SID	<i>segment identifier</i>	"7"
11.026	TRK	track and channel number list	"1"
11.026	RST	relative start time	"5816686"
11.026	RET	relative end time	"6398354"
11.026	TRN	transcript text	"Mhm."
11.026	LNG	transcript lang.	"eng"

Field No.	Mnemonic	Type-11 Content Description	Character
11.026	<i>SID</i>	<i>segment identifier</i>	"8"
11.026	TRK	track and channel number list	"1"
11.026	RST	relative start time	"6347607"
11.026	RET	relative end time	"9902408"
11.026	<i>SID</i>	<i>segment identifier</i>	"9"
11.026	TRK	track and channel number list	"1"
11.026	RST	relative start time	"6.372795"
11.026	RET	relative end time	"9.823677"
11.026	<i>SID</i>	<i>segment identifier</i>	"10"
11.026	TRK	track and channel number list	"1"
11.026	RST	relative start time	"8727959"
11.026	RET	relative end time	"9621111"
11.026	<i>SID</i>	<i>segment identifier</i>	"11"
11.026	TRK	track and channel number list	"1"
11.026	RST	relative start time	"8753148"
11.026	RET	relative end time	"9684696"
11.026	<i>SID</i>	<i>segment identifier</i>	"12"
11.026	TRK	track and channel number list	"1"
11.026	RST	relative start time	"9496221"
11.026	RET	relative end time	"10377833"
11.026	<i>SID</i>	<i>segment identifier</i>	"13"
11.026	TRK	track and channel number list	"1"
11.026	RST	relative start time	"9949622"
11.026	RET	relative end time	"12027706"
11.026	<i>SID</i>	<i>segment identifier</i>	"14"
11.026	TRK	track and channel number list	"1"
11.026	RST	relative start time	"9949622"
11.026	RET	relative end time	"12027707"
11.026	<i>SID</i>	<i>segment identifier</i>	"15"
11.026	TRK	track and channel number list	"1"
11.026	RST	relative start time	"12531486"
11.026	RET	relative end time	"14180918"
11.026	<i>SID</i>	<i>segment identifier</i>	"16"
11.026	TRK	track and channel number list	"1"
11.026	RST	relative start time	"12852908"
11.026	RET	relative end time	"13311815"
11.026	<i>SID</i>	<i>segment identifier</i>	"17"
11.026	TRK	track and channel number list	"1"
11.026	RST	relative start time	"13488664"
11.026	RET	relative end time	"16325171"
11.026	<i>SID</i>	<i>segment identifier</i>	"18"
11.026	TRK	track and channel number list	"1"
11.026	RST	relative start time	"16234256"
11.026	RET	relative end time	"16863979"
11.026	<i>SID</i>	<i>segment identifier</i>	"19"
11.026	TRK	track and channel number list	"1"
11.026	RST	relative start time	"16360201"
11.026	RET	relative end time	"36935248"
11.026	<i>SID</i>	<i>segment identifier</i>	"20"
11.026	TRK	track and channel number list	"1"
11.026	RST	relative start time	"17351509"
11.026	RET	relative end time	"19924433"
11.026	<i>SID</i>	<i>segment identifier</i>	"21"

Field No.	Mnemonic	Type-11 Content Description	Character
11.026	TRK	track and channel number list	"1"
11.026	RST	relative start time	"19319899"
11.026	RET	relative end time	"21330408"
11.026	SID	segment identifier	"22"
11.026	TRK	track and channel number list	"1"
11.026	RST	relative start time	"19811083"
11.026	RET	relative end time	"21032745"
11.026	SID	segment identifier	"23"
11.026	TRK	track and channel number list	"1"
11.026	RST	relative start time	"21330408"
11.026	RET	relative end time	"25894205"
11.026	SID	segment identifier	"24"
11.026	TRK	track and channel number list	"1"
11.026	RST	relative start time	"24496221"
11.026	RET	relative end time	"25062971"
11.026	SID	segment identifier	"25"
11.026	TRK	track and channel number list	"1"
11.026	RST	relative start time	"24836798"
11.026	RET	relative end time	"25643487"
11.026	SID	segment identifier	"26"
11.026	TRK	track and channel number list	"1"
11.026	RST	relative start time	"25654911"
11.026	RET	relative end time	"26297229"
11.026	SID	segment identifier	"27"
11.026	TRK	track and channel number list	"1"
11.026	RST	relative start time	"25793449"
11.026	RET	relative end time	"28727959"
11.026	SID	segment identifier	"28"
11.026	TRK	track and channel number list	"1"
11.026	RST	relative start time	"28828715"
11.026	RET	relative end time	"29552232"
11.026	SID	segment identifier	"29"
11.026	TRK	track and channel number list	"1"
11.026	RST	relative start time	"29168764"
11.026	RET	relative end time	"32216623"
11.026	SID	segment identifier	"30"
11.026	TRK	track and channel number list	"1"
11.026	RST	relative start time	"30025188"
11.026	RET	relative end time	"30705288"
11.026	SID	segment identifier	"31"
11.026	TRK	track and channel number list	"1"
11.026	RST	relative start time	"32418136"
11.026	RET	relative end time	"35277078"
11.026	SID	segment identifier	"32"
11.026	TRK	track and channel number list	"1"
11.026	RST	relative start time	35906801"
11.026	RET	relative end time	37229219"
11.026	SID	segment identifier	"33"
11.026	TRK	track and channel number list	"1"
11.026	RST	relative start time	"37795969"
11.026	RET	relative end time	"39647355"
11.026	SID	segment identifier	"34"
11.026	TRK	track and channel number list	"1"

Field No.	Mnemonic	Type-11 Content Description	Character
11.026	RST	relative start time	"40062971"
11.026	RET	relative end time	"40.591938"
11.026	SID	segment identifier	"35"
11.026	TRK	track and channel number list	"1"
11.026	RST	relative start time	"40099881"
11.026	RET	relative end time	"40443594"
11.026	SID	segment identifier	"36"
11.026	TRK	track and channel number list	"1"
11.026	RST	relative start time	"40604534"
11.026	RET	relative end time	"41360200"
11.026	SID	segment identifier	"37"
11.026	TRK	track and channel number list	"1"
11.026	RST	relative start time	"40617128"
11.026	RET	relative end time	"42918212"
11.026	SID	segment identifier	"38"
11.026	TRK	track and channel number list	"1"
11.026	RST	relative start time	"42556675"
11.026	RET	relative end time	"46305695"
11.026	SID	segment identifier	"39"
11.026	TRK	track and channel number list	"1"
11.026	RST	relative start time	"44219143"
11.026	RET	relative end time	"45088160"
11.026	SID	segment identifier	"40"
11.026	TRK	track and channel number list	"1"
11.026	RST	relative start time	"45453400"
11.026	RET	relative end time	"53015053"
11.026	SID	segment identifier	"41"
11.026	TRK	track and channel number list	"1"
11.026	RST	relative start time	"49307303"
11.026	RET	relative end time	"51675062"
11.026	SID	segment identifier	"42"
11.026	TRK	track and channel number list	"1"
11.026	RST	relative start time	"50000000"
11.026	RET	relative end time	"50453400"
11.026	SID	segment identifier	"43"
11.026	TRK	track and channel number list	"1"
11.026	RST	relative start time	"53312341"
11.026	RET	relative end time	"54130981"
11.026	SID	segment identifier	"44"
11.026	TRK	track and channel number list	"1"
11.026	RST	relative start time	"53417433"
11.026	RET	relative end time	"56837876"
11.026	SID	segment identifier	"45"
11.026	TRK	track and channel number list	"1"
11.026	RST	relative start time	"55100755"
11.026	RET	relative end time	"57657429"
11.026	SID	segment identifier	"46"
11.026	TRK	track and channel number list	"1"
11.026	RST	relative start time	"56991236"
11.026	RET	relative end time	"57518364"
11.026	SID	segment identifier	"47"
11.026	TRK	track and channel number list	"1"
11.026	RST	relative start time	"57115868"

Field No.	Mnemonic	Type-11 Content Description	Character
11.026	RET	relative end time	"59408059"
11.026	SID	segment identifier	"48"
11.026	TRK	track and channel number list	"1"
11.026	RST	relative start time	"57833750"
11.026	RET	relative end time	"59899243"
11.026	SID	segment identifier	"49"
11.026	TRK	track and channel number list	"1"
11.026	RST	relative start time	"59490714"
11.026	RET	relative end time	"63740553"
11.026	SID	segment identifier	"50"
11.026	TRK	track and channel number list	"1"
11.026	RST	relative start time	"59949622"
11.026	RET	relative end time	"60896357"
11.026	SID	segment identifier	"51"
11.026	TRK	track and channel number list	"1"
11.026	RST	relative start time	"61701679"
11.026	RET	relative end time	"62.556675"
11.026	SID	segment identifier	"52"
11.026	TRK	track and channel number list	"1"
11.026	RST	relative start time	"61931931"
11.026	RET	relative end time	"63324937"
11.026	SID	segment identifier	"53"
11.026	TRK	track and channel number list	"1"
11.026	RST	relative start time	"64168764"
11.026	RET	relative end time	"65541561"
11.026	SID	segment identifier	"54"
11.026	TRK	track and channel number list	"1"
11.026	RST	relative start time	"65138539"
11.026	RET	relative end time	"69.625121"
11.026	SID	segment identifier	"55"
11.026	TRK	track and channel number list	"1"
11.026	RST	relative start time	"65314861"
11.026	RET	relative end time	"65957178"
11.026	SID	segment identifier	"56"
11.026	TRK	track and channel number list	"1"
11.026	RST	relative start time	"68551637"
11.026	RET	relative end time	"69.168764"
11.026	SID	segment identifier	"57"
11.026	TRK	track and channel number list	"1"
11.026	RST	relative start time	"68891687"
11.026	RET	relative end time	"70226699"
11.026	SID	segment identifier	"58"
11.026	TRK	track and channel number list	"1"
11.026	RST	relative start time	"69800389"
11.026	RET	relative end time	"71032744"
11.026	SID	segment identifier	"59"
11.026	TRK	track and channel number list	"1"
11.026	RST	relative start time	"70162673"
11.026	RET	relative end time	"72191434"
11.026	SID	segment identifier	"60"
11.026	TRK	track and channel number list	"1"
11.026	RST	relative start time	"72108081"
11.026	RET	relative end time	"73546738"

Field No.	Mnemonic	Type-11 Content Description	Character
11.026	<i>SID</i>	<i>segment identifier</i>	"61"
11.026	TRK	track and channel number list	"1"
11.026	RST	relative start time	"72141057"
11.026	RET	relative end time	"72720403"
11.026	<i>SID</i>	<i>segment identifier</i>	"62"
11.026	TRK	track and channel number list	"1"
11.026	RST	relative start time	"73198992"
11.026	RET	relative end time	"75042016"
11.026	<i>SID</i>	<i>segment identifier</i>	"63"
11.026	TRK	track and channel number list	"1"
11.026	RST	relative start time	"73463475"
11.026	RET	relative end time	"73979847"
11.026	<i>SID</i>	<i>segment identifier</i>	"64"
11.026	TRK	track and channel number list	"1"
11.026	RST	relative start time	"73787730"
11.026	RET	relative end time	"75920155"
11.026	<i>SID</i>	<i>segment identifier</i>	"65"
11.026	TRK	track and channel number list	"1"
11.026	RST	relative start time	"75037782"
11.026	RET	relative end time	"75680100"
11.026	<i>SID</i>	<i>segment identifier</i>	"66"
11.026	TRK	track and channel number list	"1"
11.026	RST	relative start time	"75491183"
11.026	RET	relative end time	"76183878"
11.026	<i>SID</i>	<i>segment identifier</i>	"67"
11.026	TRK	track and channel number list	"1"
11.026	RST	relative start time	"75528966"
11.026	RET	relative end time	"78236775"
11.026	<i>SID</i>	<i>segment identifier</i>	"68"
11.026	TRK	track and channel number list	"1"
11.026	RST	relative start time	"76584712"
11.026	RET	relative end time	"77934508"
11.026	<i>SID</i>	<i>segment identifier</i>	"69"
11.026	TRK	track and channel number list	"1"
11.026	RST	relative start time	"78702770"
11.026	RET	relative end time	"83.186396"
11.026	<i>SID</i>	<i>segment identifier</i>	"70"
11.026	TRK	track and channel number list	"1"
11.026	RST	relative start time	"80062971"
11.026	RET	relative end time	"80755667"
11.026	TRN	transcript text	"A month?"
11.026	LNG	transcript lang.	"eng"
11.026	<i>SID</i>	<i>segment identifier</i>	"71"
11.026	TRK	track and channel number list	"1"
11.026	RST	relative start time	"80062971"
11.026	RET	relative end time	"0.7556670"
11.032	S GEO	VOCAL SEG. GEO. INFO.	None
11.032	SIL	segment identifier	"0"
11.032	LTD	lat. deg. val.	"39"
11.032	LTM	lat. min. val.	"8"
11.032	LTS	lat. sec. val.	"16"
11.032	LGD	long. deg. val.	"-77"
11.032	LGM	long. min. val.	"13"

Field No.	Mnemonic	Type-11 Content Description	Character
11.032	LGS	lat. sec. val.	"1"
11.032	ELE	elevation	"150"
11.033	SQV	SEG. QUALITY VALS	None
11.033	SIL	segment identifier	"0"
11.033	QVU	quality value	"83"
11.033	QAV	algorithm vendor ID	"NIST"
11.033	QAP	algorithm	"NIST-SNRv2013/ANSI 3.5-1997"
11.034	VCI	VOCAL COLLISION ID.	"4,5,8,9,12,13,17,23,37,40,45,49,62,70"
11.035	PPY	PROCESSING PRIORITY	None
11.036	SCD	SEG. CONTENT DESC.	None
11.036	SID	segment identifier	"1"
11.036	TRN	transcript text	"...grets only simplifies it, they only say they can't."
11.036	LNG	transcript lang.	"eng"
11.036	<i>SID</i>	<i>segment identifier</i>	"2"
11.036	TRN	transcript text	"Mhm."
11.036	LNG	transcript lang.	"eng"
11.036	<i>SID</i>	<i>segment identifier</i>	"3"
11.036	TRN	transcript text	"Hm."
11.036	LNG	transcript lang.	"eng"
11.036	<i>SID</i>	<i>segment identifier</i>	"4"
11.036	TRN	transcript text	"Instead of saying I will or I won't..."
11.036	LNG	transcript lang.	"eng"
11.036	<i>SID</i>	<i>segment identifier</i>	"5"
11.036	TRN	transcript text	"I don't know."
11.036	LNG	transcript lang.	"eng"
11.036	<i>SID</i>	<i>segment identifier</i>	"6"
11.036	TRN	transcript text	"Okay."
11.036	LNG	transcript lang.	"eng"
11.036	<i>SID</i>	<i>segment identifier</i>	"7"
11.036	TRN	transcript text	"Mhm."
11.036	LNG	transcript lang.	"eng"
11.036	<i>SID</i>	<i>segment identifier</i>	"8"
11.036	TRN	transcript text	"People are always bad with _R _S _V _P."
11.036	LNG	transcript lang.	"eng"
11.036	<i>SID</i>	<i>segment identifier</i>	"9"
11.036	TRN	transcript text	"Most people do not respond to _R _S _V _P."
11.036	LNG	transcript lang.	"eng"
11.036	<i>SID</i>	<i>segment identifier</i>	"10"
11.036	TRN	transcript text	"Oh no."
11.036	LNG	transcript lang.	"eng"
11.036	<i>SID</i>	<i>segment identifier</i>	"11"
11.036	TRN	transcript text	"Anyway."
11.036	LNG	transcript lang.	"eng"
11.036	<i>SID</i>	<i>segment identifier</i>	"12"
11.036	TRK	track and channel number list	"1"
11.036	LNG	transcript lang.	"eng"
11.036	<i>SID</i>	<i>segment identifier</i>	"13"
11.036	TRN	transcript text	"But I'd go ahead and count them in because."
11.036	LNG	transcript lang.	"eng"
11.036	<i>SID</i>	<i>segment identifier</i>	"14"
11.036	TRN	transcript text	"You never know."

Field No.	Mnemonic	Type-11 Content Description	Character
11.036	LNG	transcript lang.	"eng"
11.036	SID	segment identifier	"15"
11.036	TRN	transcript text	"Just in case they change their mind."
11.036	LNG	transcript lang.	"eng"
11.036	SID	segment identifier	"16"
11.036	TRN	transcript text	"Yeah."
11.036	LNG	transcript lang.	"eng"
11.036	SID	segment identifier	"17"
11.036	TRN	transcript text	"It is nice that they do let you know."
11.036	LNG	transcript lang.	"eng"
11.036	SID	segment identifier	"18"
11.036	TRN	transcript text	"Yeah."
11.036	LNG	transcript lang.	"eng"
11.036	SID	segment identifier	"19"
11.036	TRN	transcript text	"But"
11.036	LNG	transcript lang.	"eng"
11.036	SID	segment identifier	"20"
11.036	TRN	transcript text	"people generally do not respond to"
11.036	LNG	transcript lang.	"eng"
11.036	SID	segment identifier	"21"
11.036	TRN	transcript text	"The nice thing about bringing food"
11.036	LNG	transcript lang.	"eng"
11.036	SID	segment identifier	"22"
11.036	TRN	transcript text	"Yeah it's true. "
11.036	LNG	transcript lang.	"eng"
11.036	SID	segment identifier	"23"
11.036	TRN	transcript text	"If everybody's bringing something..."
11.036	LNG	transcript lang.	"eng"
11.036	SID	segment identifier	"24"
11.036	TRN	transcript text	"Yeah."
11.036	LNG	transcript lang.	"eng"
11.036	SID	segment identifier	"25"
11.036	TRN	transcript text	"Yeah."
11.036	LNG	transcript lang.	"eng"
11.036	SID	segment identifier	"26"
11.036	TRN	transcript text	"That's true."
11.036	LNG	transcript lang.	"eng"
11.036	SID	segment identifier	"27"
11.036	TRN	transcript text	"Oh, if we do cater it would be..."
11.036	LNG	transcript lang.	"eng"
11.036	SID	segment identifier	"28"
11.036	TRN	transcript text	"Yes."
11.036	LNG	transcript lang.	"eng"
11.036	SID	segment identifier	"29"
11.036	TRN	transcript text	"And make sure they're there. So maybe..."
11.036	LNG	transcript lang.	"eng"
11.036	SID	segment identifier	"30"
11.036	TRN	transcript text	"Yeah."
11.036	LNG	transcript lang.	"eng"
11.036	SID	segment identifier	"31"
11.036	TRN	transcript text	"Which makes me think should we make a list..."
11.036	LNG	transcript lang.	"eng"
11.036	SID	segment identifier	"32"

Field No.	Mnemonic	Type-11 Content Description	Character
11.036	TRN	transcript text	“and I guess we can’t say”
11.036	LNG	transcript lang.	“eng”
11.036	SID	segment identifier	“33”
11.036	TRN	transcript text	“you know you have to bring this, but”
11.036	LNG	transcript lang.	“eng”
11.036	SID	segment identifier	“34”
11.036	TRN	transcript text	“Yeah.”
11.036	LNG	transcript lang.	“eng”
11.036	SID	segment identifier	“35”
11.036	TRN	transcript text	“Yeah.”
11.036	LNG	transcript lang.	“eng”
11.036	SID	segment identifier	“36”
11.036	TRN	transcript text	“maybe”
11.036	LNG	transcript lang.	“eng”
11.036	SID	segment identifier	“37”
11.036	TRN	transcript text	“We just have a recommended uh”
11.036	LNG	transcript lang.	“eng”
11.036	SID	segment identifier	“38”
11.036	TRN	transcript text	“like a main dish or, like they do when... ”
11.036	LNG	transcript lang.	“eng”
11.036	SID	segment identifier	“39”
11.036	TRN	transcript text	“category.”
11.036	LNG	transcript lang.	“eng”
11.036	SID	segment identifier	“40”
11.036	TRN	transcript text	“Or we can write on the invitation that...”
11.036	LNG	transcript lang.	“eng”
11.036	SID	segment identifier	“41”
11.036	TRN	transcript text	“Yeah, that’s what I was thinking.”
11.036	LNG	transcript lang.	“eng”
11.036	SID	segment identifier	“42”
11.036	TRN	transcript text	“Mhm.”
11.036	LNG	transcript lang.	“eng”
11.036	SID	segment identifier	“43”
11.036	TRN	transcript text	“That’s true.”
11.036	LNG	transcript lang.	“eng”
11.036	SID	segment identifier	“44”
11.036	TRN	transcript text	“So then maybe more people will be do it”
11.036	LNG	transcript lang.	“eng”
11.036	SID	segment identifier	“45”
11.036	TRN	transcript text	“That they would. More %uh... ”
11.036	LNG	transcript lang.	“eng”
11.036	SID	segment identifier	“46”
11.036	TRN	transcript text	“Yeah.”
11.036	LNG	transcript lang.	“eng”
11.036	SID	segment identifier	“47”
11.036	TRN	transcript text	“Oh that’s true and they might be...”
11.036	LNG	transcript lang.	“eng”
11.036	SID	segment identifier	“48”
11.036	TRN	transcript text	“There’s a way to put it, yeah.”
11.036	LNG	transcript lang.	“eng”
11.036	SID	segment identifier	“49”
11.036	TRN	transcript text	“Yeah I mean there’s a nice way to word it...”
11.036	LNG	transcript lang.	“eng”

Field No.	Mnemonic	Type-11 Content Description	Character
11.036	SID	segment identifier	"50"
11.036	TRN	transcript text	"Let's go."
11.036	LNG	transcript lang.	"eng"
11.036	SID	segment identifier	"51"
11.036	TRN	transcript text	"Yeah."
11.036	LNG	transcript lang.	"eng"
11.036	SID	segment identifier	"52"
11.036	TRN	transcript text	"I've seen it done."
11.036	LNG	transcript lang.	"eng"
11.036	SID	segment identifier	"53"
11.036	TRN	transcript text	"Yeah that's a good idea."
11.036	LNG	transcript lang.	"eng"
11.036	SID	segment identifier	"54"
11.036	TRN	transcript text	"Where basically if you don't _R_S_V_P..."
11.036	LNG	transcript lang.	"eng"
11.036	SID	segment identifier	"55"
11.036	TRN	transcript text	"Mhm."
11.036	LNG	transcript lang.	"eng"
11.036	SID	segment identifier	"56"
11.036	TRN	transcript text	"Right."
11.036	LNG	transcript lang.	"eng"
11.036	SID	segment identifier	"57"
11.036	TRN	transcript text	"Right exactly."
11.036	LNG	transcript lang.	"eng"
11.036	SID	segment identifier	"58"
11.036	TRN	transcript text	"So. {laugh"
11.036	LNG	transcript lang.	"eng"
11.036	SID	segment identifier	"59"
11.036	TRN	transcript text	"Well, come on ^Rachel. {laugh {lipsmack"
11.036	LNG	transcript lang.	"eng"
11.036	SID	segment identifier	"60"
11.036	TRN	transcript text	"Well I mean that's how it"
11.036	LNG	transcript lang.	"eng"
11.036	SID	segment identifier	"61"
11.036	TRN	transcript text	"So how"
11.036	LNG	transcript lang.	"eng"
11.036	SID	segment identifier	"62"
11.036	TRN	transcript text	"That's very good let's go with that. "
11.036	LNG	transcript lang.	"eng"
11.036	SID	segment identifier	"63"
11.036	TRN	transcript text	"Yeah."
11.036	LNG	transcript lang.	"eng"
11.036	SID	segment identifier	"64"
11.036	TRN	transcript text	"it makes people"
11.036	LNG	transcript lang.	"eng"
11.036	SID	segment identifier	"65"
11.036	TRN	transcript text	"I know."
11.036	LNG	transcript lang.	"eng"
11.036	SID	segment identifier	"66"
11.036	TRN	transcript text	"Yeah."
11.036	LNG	transcript lang.	"eng"
11.036	SID	segment identifier	"67"
11.036	TRN	transcript text	"So how far ahead will we want to mail... "

Field No.	Mnemonic	Type-11 Content Description	Character
11.036	LNG	transcript lang.	"eng"
11.036	SID	segment identifier	"68"
11.036	TRN	transcript text	"_R_S_V_P."
11.036	LNG	transcript lang.	"eng"
11.036	SID	segment identifier	"69"
11.036	TRN	transcript text	"At least, %um because you're hitting... "
11.036	LNG	transcript lang.	"eng"
11.036	SID	segment identifier	"70"
11.036	TRN	transcript text	"A month?"
11.036	LNG	transcript lang.	"eng"
11.036	SID	segment identifier	"71"
11.036	TRN	transcript text	"A month"
11.036	LNG	transcript lang.	"eng"
11.037	SCC	SEG. SPEAKER CHARS	None
11.037	SIL	segment identifier list	"0"
11.037	IMP	impairment level	0
11.037	DSL	dominant spoken lang. code	"eng"
11.037	LPS	lang. proficiency	"9"
11.037	STY	speech style code	"7"
11.037	INT	intelligibility scale code	"9"
11.037	FDC	familiarity code	"4"
11.037	EMC	emotional state code	"3"
11.037	SIL	segment identifier list	"1"
11.037	SPI	speaker identifier	"NIST MR Spk 255"
11.037	SIL	segment identifier list	"2"
11.037	SPI	speaker identifier	"NIST MR Spk 254"
11.037	SIL	segment identifier list	"3"
11.037	SPI	speaker identifier	"NIST MR Spk 253"
11.037	SIL	segment identifier list	"4"
11.037	SPI	speaker identifier	"NIST MR Spk 255"
11.037	SIL	segment identifier list	"5"
11.037	SPI	speaker identifier	"NIST MR Spk 256"
11.037	SIL	segment identifier list	"6"
11.037	SPI	speaker identifier	"NIST MR Spk 254"
11.037	SIL	segment identifier list	"7"
11.037	SPI	speaker identifier	"NIST MR Spk 254"
11.037	SIL	segment identifier list	"8"
11.037	SPI	speaker identifier	"NIST MR Spk 253"
11.037	SIL	segment identifier list	"9"
11.037	SPI	speaker identifier	"NIST MR Spk 257"
11.037	SIL	segment identifier list	"10"
11.037	SPI	speaker identifier	"NIST MR Spk 254"
11.037	SIL	segment identifier list	"11"
11.037	SPI	speaker identifier	"NIST MR Spk 255"
11.037	SIL	segment identifier list	"12"
11.037	SPI	speaker identifier	"NIST MR Spk 256"
11.037	SIL	segment identifier list	"13"
11.037	SPI	speaker identifier	"NIST MR Spk 257"
11.037	SIL	segment identifier list	"14"
11.037	SPI	speaker identifier	"NIST MR Spk 256"
11.037	SIL	segment identifier list	"15"
11.037	SPI	speaker identifier	"NIST MR Spk 255"
11.037	SIL	segment identifier list	"16"

Field No.	Mnemonic	Type-11 Content Description	Character
11.037	SPI	speaker identifier	"NIST MR Spk 254"
11.037	SIL	segment identifier list	"17"
11.037	SPI	speaker identifier	"NIST MR Spk 257"
11.037	SIL	segment identifier list	"18"
11.037	SPI	speaker identifier	"NIST MR Spk 255"
11.037	SIL	segment identifier list	"19"
11.037	SPI	speaker identifier	"NIST MR Spk 257"
11.037	SIL	segment identifier list	"20"
11.037	SPI	speaker identifier	"NIST MR Spk 257"
11.037	SIL	segment identifier list	"21"
11.037	SPI	speaker identifier	"NIST MR Spk 255"
11.037	SIL	segment identifier list	"22"
11.037	SPI	speaker identifier	"NIST MR Spk 256"
11.037	SIL	segment identifier list	"23"
11.037	SPI	speaker identifier	"NIST MR Spk 255"
11.037	SIL	segment identifier list	"24"
11.037	SPI	speaker identifier	"NIST MR Spk 254"
11.037	SIL	segment identifier list	"25"
11.037	SPI	speaker identifier	"NIST MR Spk 254"
11.037	SIL	segment identifier list	"26"
11.037	SPI	speaker identifier	"NIST MR Spk 256"
11.037	SIL	segment identifier list	"27"
11.037	SPI	speaker identifier	"NIST MR Spk 257"
11.037	SIL	segment identifier list	"28"
11.037	SPI	speaker identifier	"NIST MR Spk 255"
11.037	SIL	segment identifier list	"29"
11.037	SPI	speaker identifier	"NIST MR Spk 256"
11.037	SIL	segment identifier list	"30"
11.037	SPI	speaker identifier	"NIST MR Spk 257"
11.037	SIL	segment identifier list	"31"
11.037	SPI	speaker identifier	"NIST MR Spk 256"
11.037	SIL	segment identifier list	"32"
11.037	SPI	speaker identifier	"NIST MR Spk 256"
11.037	SIL	segment identifier list	"33"
11.037	SPI	speaker identifier	"NIST MR Spk 256"
11.037	SIL	segment identifier list	"34"
11.037	SPI	speaker identifier	"NIST MR Spk 257"
11.037	SIL	segment identifier list	"35"
11.037	SPI	speaker identifier	"NIST MR Spk 254"
11.037	SIL	segment identifier list	"36"
11.037	SPI	speaker identifier	"NIST MR Spk 256"
11.037	SIL	segment identifier list	"37"
11.037	SPI	speaker identifier	"NIST MR Spk 255"
11.037	SIL	segment identifier list	"38"
11.037	SPI	speaker identifier	"NIST MR Spk 256"
11.037	SIL	segment identifier list	"39"
11.037	SPI	speaker identifier	"NIST MR Spk 255"
11.037	SIL	segment identifier list	"40"
11.037	SPI	speaker identifier	"NIST MR Spk 254"
11.037	SIL	segment identifier list	"41"
11.037	SPI	speaker identifier	"NIST MR Spk 257"
11.037	SIL	segment identifier list	"42"
11.037	SPI	speaker identifier	"NIST MR Spk 256"

Field No.	Mnemonic	Type-11 Content Description	Character
11.037	SIL	segment identifier list	"43"
11.037	SPI	speaker identifier	"NIST MR Spk 256"
11.037	SIL	segment identifier list	"44"
11.037	SPI	speaker identifier	"NIST MR Spk 254"
11.037	SIL	segment identifier list	"45"
11.037	SPI	speaker identifier	"NIST MR Spk 255"
11.037	SIL	segment identifier list	"46"
11.037	SPI	speaker identifier	"NIST MR Spk 254"
11.037	SIL	segment identifier list	"47"
11.037	SPI	speaker identifier	"NIST MR Spk 256"
11.037	SIL	segment identifier list	"48"
11.037	SPI	speaker identifier	"NIST MR Spk 253"
11.037	SIL	segment identifier list	"49"
11.037	SPI	speaker identifier	"NIST MR Spk 254"
11.037	SIL	segment identifier list	"50"
11.037	SPI	speaker identifier	"NIST MR Spk 256"
11.037	SIL	segment identifier list	"51"
11.037	SPI	speaker identifier	"NIST MR Spk 256"
11.037	SIL	segment identifier list	"52"
11.037	SPI	speaker identifier	"NIST MR Spk 253"
11.037	SIL	segment identifier list	"53"
11.037	SPI	speaker identifier	"NIST MR Spk 256"
11.037	SIL	segment identifier list	"54"
11.037	SPI	speaker identifier	"NIST MR Spk 253"
11.037	SIL	segment identifier list	"55"
11.037	SPI	speaker identifier	"NIST MR Spk 257"
11.037	SIL	segment identifier list	"56"
11.037	SPI	speaker identifier	"NIST MR Spk 254"
11.037	SIL	segment identifier list	"57"
11.037	SPI	speaker identifier	"NIST MR Spk 256"
11.037	SIL	segment identifier list	"58"
11.037	SPI	speaker identifier	"NIST MR Spk 253"
11.037	SIL	segment identifier list	"59"
11.037	SPI	speaker identifier	"NIST MR Spk 257"
11.037	SIL	segment identifier list	"60"
11.037	SPI	speaker identifier	"NIST MR Spk 253"
11.037	SIL	segment identifier list	"61"
11.037	SPI	speaker identifier	"NIST MR Spk 255"
11.037	SIL	segment identifier list	"62"
11.037	SPI	speaker identifier	"NIST MR Spk 256"
11.037	SIL	segment identifier list	"63"
11.037	SPI	speaker identifier	"NIST MR Spk 254"
11.037	SIL	segment identifier list	"64"
11.037	SPI	speaker identifier	"NIST MR Spk 253"
11.037	SIL	segment identifier list	"65"
11.037	SPI	speaker identifier	"NIST MR Spk 254"
11.037	SIL	segment identifier list	"66"
11.037	SPI	speaker identifier	"NIST MR Spk 257"
11.037	SIL	segment identifier list	"67"
11.037	SPI	speaker identifier	"NIST MR Spk 255"
11.037	SIL	segment identifier list	"68"
11.037	SPI	speaker identifier	"NIST MR Spk 253"
11.037	SIL	segment identifier list	"69"

Field No.	Mnemonic	Type-11 Content Description	Character
11.037	SPI	speaker identifier	"NIST MR Spk 257"
11.037	SIL	segment identifier list	"70"
11.037	SPI	speaker identifier	"NIST MR Spk 254"
11.037	SIL	segment identifier list	"71"
11.037	SPI	speaker identifier	"NIST MR Spk 256"
11.038	SCH	SEGMENT CHANNEL	None
11.039-050		RESERVED FOR FUTURE	None
11.051	COM	COMMENTS	"First Type-11 Test"
11.052-099	NONE	Reserved	None
11.100-900	UDF	USER-DEFINED FIELDS	User Defined
11.901	NONE	Reserved	None
11.902	ANN	ANNOTATION INFORMATION	None
11.902	GMT	Greenwich Mean Time	"201305201436Z"
11.902	NAV	processing algorithm name/version	"unspecified"
11.902	OWN	algorithm owner	"NIST"
11.902	PRO	process description	"Segment & cluster Speakers"
11.903-091	NONE	Reserved	None
11.992	T2C	TYPE-2 RECORD CROSS REF.	"0"
11.993	SAN	SOURCE NAME AGENCY	"NISTPDO1"
11.994	EFR	EXTERNAL FILE REFERENCE	None
11.995	ASC	ASSOCIATED CONTEXT	None
11.996	HAS	HASH	"7c38b74448e34d2a60aa02609f9e4539d08e82be6bc339c65c8143e561a6a66c"
11.997	SOR	SOURCE REPRESENTATION	None
11.998	GEO	GEO. SAMPLE ACQ. LOC.	None

Field No.	Mnemonic	Type-11 Content Description	Character
11.998	UTE	universal time entry	"200801010805Z"
11.998	LTD	latitude degree value	"39"
11.998	LTM	latitude minute value	"8"
11.998	LTS	latitude second value	"16"
11.998	LGD	longitude degree value	"-77"
11.998	LGM	longitude minute value	"13"
11.998	LGS	longitude second value	"1"
11.999	DATA	VOICE DATA	2592046 bytes from file NIST_20080201-1405_d03_NONE_1620-1701.wav.

2.5 Enrolling a speaker: Voice Model Creation and Retention

This transaction relies on the previous RetSpkClust to enroll a speaker selected from the clustering (here with a provisional identification of "NIST MR Spk 253"). As with the cluster speaker transaction the request most go to an advanced processing lab. That lab will have to compute voice models suitable to a particular speaker identification system.

Table 2.8: Type 1 record: Enroll Speaker Type of transaction.

Field No.	Mnemonic	Type-1 Content Description	Character
1.001	none	RECORD HEADER	"1"
1.002	VER	VERSION NUMBER	"0501"
1.003	CNT	TRANSACTION CONTENT	None
1.003	FRC	first record category code	"1"
1.003	CRC	content record count	"6"

1.003	REC	record category code	"2"
1.003	IDC	information designation character	"0"
1.003	REC	record category code	"11"
1.003	IDC	information designation character	"1"
1.004	TOT	TYPE OF TRANSACTION	"EnrollSpk"
1.005	DAT	DATE	"20130521"
1.006	PRY	PRIORITY	"9"
1.007	DAI	DESTINATION AGENCY IDENTIFIER	"NISTBIOMPD01"
1.008	ORI	ORIGINATING AGENCY IDENTIFIER	"TechLab02"
1.009	TCN	TRANSACTION CONTROL NUMBER	"Ret"
1.010	TCR	TRANS. CTL REF. NO.	"T11ReqSpeechTrns001"
1.011	NSR	NATIVE SCANNING RESOLUTION	00.00
1.012	NTR	NOMINAL RESOLUTION	00.00
1.013	DOM	DOMAIN NAME	NONE
1.013	DNM	domain name	"Speech"
1.014	GMT	GREENWICH MEAN TIME	"201305201436Z"
1.015	DCS	CHARACTER ENCODING	None
1.015	CSI	character encoding set index	"3"
1.015	CSN	character encoding set name	"UTF-8"

Table 2.9: Type 2 Record: Enroll Speaker transaction

Field No.	Mnemonic	Type-2 Content Description	Character
2.001		RECORD HEADER	"2"
2.002	IDC	INFO DESIGNATION CHAR.	"0"
2.003	EXPL	Explanation	"Enroll: 'NIST MR Spk 253'."

Table 2.10: Type-11 Record with Clustered Transcript Segments for voice model creation.

11.001		Record Header	"11"
11.002	IDC	INFO. DESIGNATION CHAR.	"5"
11.003	AOD	AUDIO OBJ. DESC. CODE	"0"
11.004	SRC	SOURCE AGENCY	"NISTBIOMPD01"
11.005	VRSO	VOICE REC. SOURCE ORG.	None
11.005	STC	SOURCE TYPE ORG.	"G"
11.005	SON	SOURCE ORG. NAME	"NIST PD"
11.005	POC	point of contact	"Vince Stanford"
11.005	CSC	src. org. country code	"US"
11.006	VRC	VID. REC. CONTENT DESC.	None
11.006	AVI	assigned voice indicator	"Q"
11.006	SPC	speaker plurality code	"M"
11.006	COM	comment	"Four or five speakers."
11.007	AREC	AUDIO RECORDING DEV.	None
11.007	RDD	rec. dev. desc. text	"LDC microphone"
11.007	MAK	rec. dev. make.	"Hammerfall"
11.007	MOD	rec. dev. model	"8PRE/896HD"
11.007	SER	rec. dev. serial number	"UNK"
11.008	AQS	ACQUISITION SOURCE	None
11.008	ACQ	acquisition src. code	"14"
11.008	A2D	ADC desc.	"Hammerfall ADAT"
11.009	RCD	REC. CREATION DATE	"20130521"
11.010	VRD	VOICE RECORDING DATE	"200801011405"

Field No.	Mnemonic	Type-11 Content Description	Character
11.011	TRD	TOTAL REC. DURATION	None
11.011	TIM	voice rec. time	81000062
11.011	CBY	compressed bytes	2592002
11.011	TSM	total digital samples	1296001
11.012	PMO	PHYSICAL MEDIA OBJECT	None
11.013	CONT	CONTAINER	None
11.013	CONC	container code	"3"
11.014	CDC	CODEC	None
11.015	PSQ	PRELIM. SIGNAL QUAL.	None
11.015	QVU	quality value	"83"
11.015	QAV	quality vendor identification	"1"
11.015	QAP	algorithm product identification	"1"
11.015	COM	comment	"NIST-SNRu/ANSI 3.5-1997"
11.016-020	NONE	Reserved	None
11.021	RED	REDACTION	None
11.021	RDI	redaction indicator	"0"
11.021	RDA	redaction auth. org. name	None
11.021	COM	comment	None
11.022	RDD	REDACTION DIARY	None
11.023	DIS	DISCONTINUITIES	None
11.023	DCI	discontinuity indicator	"2"
11.023	COM	comment	"Unable to ascertain discontinuities"
11.024	DCD	DISCONTINUITIES DIARY	None
11.025	VOC	SEGMENT DIARY	None
11.025	DII	diarization indicator	"1"
11.025	DAU	diarization authority org. name	"NISTBIOMPD01"
11.025	COM	comment	"NIST Biometric Police Dept. is fictional."
11.026	VCD	VOCAL CONTENT DIARY	None
11.026	SID	segment identifier	"1"
11.026	TRK	track and channel number list	"1"
11.026	RST	relative start time	"0"
11.026	RET	relative end time	"2855020"
11.026	TST	tagged start time	20080201140500Z
11.026	TET	tagged end time	20080201140529Z
11.026	SRT	segment recording start time	20080201140500Z
11.026	END	segment recording end time	20080201140529Z
11.026	SID	segment identifier	"2"
11.026	TRK	track and channel number list	"1"
11.026	RST	relative start time	"2530177"
11.026	RET	relative end time	"3082909"
11.026	SID	segment identifier	"3"
11.026	TRK	track and channel number list	"1"
11.026	RST	relative start time	"3297331"
11.026	RET	relative end time	"3621346"
11.026	SID	segment identifier	"4"
11.026	TRK	track and channel number list	"1"
11.026	RST	relative start time	"3589420"
11.026	RET	relative end time	"6875690"
11.026	SID	segment identifier	"5"
11.026	TRK	track and channel number list	"1"
11.026	RST	relative start time	"3589420"
11.026	RET	relative end time	"6875690"
11.026	SID	segment identifier	"6"

Field No.	Mnemonic	Type-11 Content Description	Character
11.026	TRK	track and channel number list	"1"
11.026	RST	relative start time	"3788119"
11.026	RET	relative end time	"4207433"
11.026	SID	segment identifier	"7"
11.026	TRK	track and channel number list	"1"
11.026	RST	relative start time	"5816686"
11.026	RET	relative end time	"6398354"
11.026	TRN	transcript text	"Mhm."
11.026	LNG	transcript lang.	"eng"
11.026	SID	segment identifier	"8"
11.026	TRK	track and channel number list	"1"
11.026	RST	relative start time	"6347607"
11.026	RET	relative end time	"9902408"
11.026	SID	segment identifier	"9"
11.026	TRK	track and channel number list	"1"
11.026	RST	relative start time	"6.372795"
11.026	RET	relative end time	"9.823677"
11.026	SID	segment identifier	"10"
11.026	TRK	track and channel number list	"1"
11.026	RST	relative start time	"8727959"
11.026	RET	relative end time	"9621111"
11.026	SID	segment identifier	"11"
11.026	TRK	track and channel number list	"1"
11.026	RST	relative start time	"8753148"
11.026	RET	relative end time	"9684696"
11.026	SID	segment identifier	"12"
11.026	TRK	track and channel number list	"1"
11.026	RST	relative start time	"9496221"
11.026	RET	relative end time	"10377833"
11.026	SID	segment identifier	"13"
11.026	TRK	track and channel number list	"1"
11.026	RST	relative start time	"9949622"
11.026	RET	relative end time	"12027706"
11.026	SID	segment identifier	"14"
11.026	TRK	track and channel number list	"1"
11.026	RST	relative start time	"9949622"
11.026	RET	relative end time	"12027707"
11.026	SID	segment identifier	"15"
11.026	TRK	track and channel number list	"1"
11.026	RST	relative start time	"12531486"
11.026	RET	relative end time	"14180918"
11.026	SID	segment identifier	"16"
11.026	TRK	track and channel number list	"1"
11.026	RST	relative start time	"12852908"
11.026	RET	relative end time	"13311815"
11.026	SID	segment identifier	"17"
11.026	TRK	track and channel number list	"1"
11.026	RST	relative start time	"13488664"
11.026	RET	relative end time	"16325171"
11.026	SID	segment identifier	"18"
11.026	TRK	track and channel number list	"1"
11.026	RST	relative start time	"16234256"
11.026	RET	relative end time	"16863979"

Field No.	Mnemonic	Type-11 Content Description	Character
11.026	SID	segment identifier	"19"
11.026	TRK	track and channel number list	"1"
11.026	RST	relative start time	"16360201"
11.026	RET	relative end time	"36935248"
11.026	SID	segment identifier	"20"
11.026	TRK	track and channel number list	"1"
11.026	RST	relative start time	"17351509"
11.026	RET	relative end time	"19924433"
11.026	SID	segment identifier	"21"
11.026	TRK	track and channel number list	"1"
11.026	RST	relative start time	"19319899"
11.026	RET	relative end time	"21330408"
11.026	SID	segment identifier	"22"
11.026	TRK	track and channel number list	"1"
11.026	RST	relative start time	"19811083"
11.026	RET	relative end time	"21032745"
11.026	SID	segment identifier	"23"
11.026	TRK	track and channel number list	"1"
11.026	RST	relative start time	"21330408"
11.026	RET	relative end time	"25894205"
11.026	SID	segment identifier	"24"
11.026	TRK	track and channel number list	"1"
11.026	RST	relative start time	"24496221"
11.026	RET	relative end time	"25062971"
11.026	SID	segment identifier	"25"
11.026	TRK	track and channel number list	"1"
11.026	RST	relative start time	"24836798"
11.026	RET	relative end time	"25643487"
11.026	SID	segment identifier	"26"
11.026	TRK	track and channel number list	"1"
11.026	RST	relative start time	"25654911"
11.026	RET	relative end time	"26297229"
11.026	SID	segment identifier	"27"
11.026	TRK	track and channel number list	"1"
11.026	RST	relative start time	"25793449"
11.026	RET	relative end time	"28727959"
11.026	SID	segment identifier	"28"
11.026	TRK	track and channel number list	"1"
11.026	RST	relative start time	"28828715"
11.026	RET	relative end time	"29552232"
11.026	SID	segment identifier	"29"
11.026	TRK	track and channel number list	"1"
11.026	RST	relative start time	"29168764"
11.026	RET	relative end time	"32216623"
11.026	SID	segment identifier	"30"
11.026	TRK	track and channel number list	"1"
11.026	RST	relative start time	"30025188"
11.026	RET	relative end time	"30705288"
11.026	SID	segment identifier	"31"
11.026	TRK	track and channel number list	"1"
11.026	RST	relative start time	"32418136"
11.026	RET	relative end time	"35277078"
11.026	SID	segment identifier	"32"

Field No.	Mnemonic	Type-11 Content Description	Character
11.026	TRK	track and channel number list	"1"
11.026	RST	relative start time	35906801"
11.026	RET	relative end time	37229219"
11.026	SID	segment identifier	"33"
11.026	TRK	track and channel number list	"1"
11.026	RST	relative start time	"37795969"
11.026	RET	relative end time	"39647355"
11.026	SID	segment identifier	"34"
11.026	TRK	track and channel number list	"1"
11.026	RST	relative start time	"40062971"
11.026	RET	relative end time	"40.591938"
11.026	SID	segment identifier	"35"
11.026	TRK	track and channel number list	"1"
11.026	RST	relative start time	"40099881"
11.026	RET	relative end time	"40443594"
11.026	SID	segment identifier	"36"
11.026	TRK	track and channel number list	"1"
11.026	RST	relative start time	"40604534"
11.026	RET	relative end time	"41360200"
11.026	SID	segment identifier	"37"
11.026	TRK	track and channel number list	"1"
11.026	RST	relative start time	"40617128"
11.026	RET	relative end time	"42918212"
11.026	SID	segment identifier	"38"
11.026	TRK	track and channel number list	"1"
11.026	RST	relative start time	"42556675"
11.026	RET	relative end time	"46305695"
11.026	SID	segment identifier	"39"
11.026	TRK	track and channel number list	"1"
11.026	RST	relative start time	"44219143"
11.026	RET	relative end time	"45088160"
11.026	SID	segment identifier	"40"
11.026	TRK	track and channel number list	"1"
11.026	RST	relative start time	"45453400"
11.026	RET	relative end time	"53015053"
11.026	SID	segment identifier	"41"
11.026	TRK	track and channel number list	"1"
11.026	RST	relative start time	"49307303"
11.026	RET	relative end time	"51675062"
11.026	SID	segment identifier	"42"
11.026	TRK	track and channel number list	"1"
11.026	RST	relative start time	"50000000"
11.026	RET	relative end time	"50453400"
11.026	SID	segment identifier	"43"
11.026	TRK	track and channel number list	"1"
11.026	RST	relative start time	"53312341"
11.026	RET	relative end time	"54130981"
11.026	SID	segment identifier	"44"
11.026	TRK	track and channel number list	"1"
11.026	RST	relative start time	"53417433"
11.026	RET	relative end time	"56837876"
11.026	SID	segment identifier	"45"
11.026	TRK	track and channel number list	"1"

Field No.	Mnemonic	Type-11 Content Description	Character
11.026	RST	relative start time	"55100755"
11.026	RET	relative end time	"57657429"
11.026	SID	segment identifier	"46"
11.026	TRK	track and channel number list	"1"
11.026	RST	relative start time	"56991236"
11.026	RET	relative end time	"57518364"
11.026	SID	segment identifier	"47"
11.026	TRK	track and channel number list	"1"
11.026	RST	relative start time	"57115868"
11.026	RET	relative end time	"59408059"
11.026	SID	segment identifier	"48"
11.026	TRK	track and channel number list	"1"
11.026	RST	relative start time	"57833750"
11.026	RET	relative end time	"59899243"
11.026	SID	segment identifier	"49"
11.026	TRK	track and channel number list	"1"
11.026	RST	relative start time	"59490714"
11.026	RET	relative end time	"63740553"
11.026	SID	segment identifier	"50"
11.026	TRK	track and channel number list	"1"
11.026	RST	relative start time	"59949622"
11.026	RET	relative end time	"60896357"
11.026	SID	segment identifier	"51"
11.026	TRK	track and channel number list	"1"
11.026	RST	relative start time	"61701679"
11.026	RET	relative end time	"62.556675"
11.026	SID	segment identifier	"52"
11.026	TRK	track and channel number list	"1"
11.026	RST	relative start time	"61931931"
11.026	RET	relative end time	"63324937"
11.026	SID	segment identifier	"53"
11.026	TRK	track and channel number list	"1"
11.026	RST	relative start time	"64168764"
11.026	RET	relative end time	"65541561"
11.026	SID	segment identifier	"54"
11.026	TRK	track and channel number list	"1"
11.026	RST	relative start time	"65138539"
11.026	RET	relative end time	"69.625121"
11.026	SID	segment identifier	"55"
11.026	TRK	track and channel number list	"1"
11.026	RST	relative start time	"65314861"
11.026	RET	relative end time	"65957178"
11.026	SID	segment identifier	"56"
11.026	TRK	track and channel number list	"1"
11.026	RST	relative start time	"68551637"
11.026	RET	relative end time	"69.168764"
11.026	SID	segment identifier	"57"
11.026	TRK	track and channel number list	"1"
11.026	RST	relative start time	"68891687"
11.026	RET	relative end time	"70226699"
11.026	SID	segment identifier	"58"
11.026	TRK	track and channel number list	"1"
11.026	RST	relative start time	"69800389"

Field No.	Mnemonic	Type-11 Content Description	Character
11.026	RET	relative end time	"71032744"
11.026	SID	segment identifier	"59"
11.026	TRK	track and channel number list	"1"
11.026	RST	relative start time	"70162673"
11.026	RET	relative end time	"72191434"
11.026	SID	segment identifier	"60"
11.026	TRK	track and channel number list	"1"
11.026	RST	relative start time	"72108081"
11.026	RET	relative end time	"73546738"
11.026	SID	segment identifier	"61"
11.026	TRK	track and channel number list	"1"
11.026	RST	relative start time	"72141057"
11.026	RET	relative end time	"72720403"
11.026	SID	segment identifier	"62"
11.026	TRK	track and channel number list	"1"
11.026	RST	relative start time	"73198992"
11.026	RET	relative end time	"75042016"
11.026	SID	segment identifier	"63"
11.026	TRK	track and channel number list	"1"
11.026	RST	relative start time	"73463475"
11.026	RET	relative end time	"73979847"
11.026	SID	segment identifier	"64"
11.026	TRK	track and channel number list	"1"
11.026	RST	relative start time	"73787730"
11.026	RET	relative end time	"75920155"
11.026	SID	segment identifier	"65"
11.026	TRK	track and channel number list	"1"
11.026	RST	relative start time	"75037782"
11.026	RET	relative end time	"75680100"
11.026	SID	segment identifier	"66"
11.026	TRK	track and channel number list	"1"
11.026	RST	relative start time	"75491183"
11.026	RET	relative end time	"76183878"
11.026	SID	segment identifier	"67"
11.026	TRK	track and channel number list	"1"
11.026	RST	relative start time	"75528966"
11.026	RET	relative end time	"78236775"
11.026	SID	segment identifier	"68"
11.026	TRK	track and channel number list	"1"
11.026	RST	relative start time	"76584712"
11.026	RET	relative end time	"77934508"
11.026	SID	segment identifier	"69"
11.026	TRK	track and channel number list	"1"
11.026	RST	relative start time	"78702770"
11.026	RET	relative end time	"83.186396"
11.026	SID	segment identifier	"70"
11.026	TRK	track and channel number list	"1"
11.026	RST	relative start time	"80062971"
11.026	RET	relative end time	"80755667"
11.026	TRN	transcript text	"A month?"
11.026	LNG	transcript lang.	"eng"
11.026	SID	segment identifier	"71"
11.026	TRK	track and channel number list	"1"

Field No.	Mnemonic	Type-11 Content Description	Character
11.026	RST	relative start time	"80062971"
11.026	RET	relative end time	"0.7556670"
11.032	SGEO	VOCAL SEG. GEO. INFO.	None
11.032	SIL	segment identifier	"0"
11.032	LTD	lat. deg. val.	"39"
11.032	LTM	lat. min. val.	"8"
11.032	LTS	lat. sec. val.	"16"
11.032	LGD	long. deg. val.	"-77"
11.032	LGM	long. min. val.	"13"
11.032	LGS	lat. sec. val.	"1"
11.032	ELE	elevation	"150"
11.033	SQV	SEG. QUALITY VALS	None
11.033	SIL	segment identifier	"0"
11.033	QVU	quality value	"83"
11.033	QAV	algorithm vendor ID	"NIST"
11.033	QAP	algorithm	"NIST-SNRv2013/ANSI 3.5-1997"
11.034	VCI	VOCAL COLLISION ID.	"4,5,8,9,12,13,17,23,37,40,45,49,62,70"
11.035	PPY	PROCESSING PRIORITY	None
11.036	SCD	SEG. CONTENT DESC.	None
11.036	SID	segment identifier	"1"
11.036	TRN	transcript text	"...grets only simplifies it, they only say they can't."
11.036	LNG	transcript lang.	"eng"
11.036	<i>SID</i>	<i>segment identifier</i>	<i>"2"</i>
11.036	TRN	transcript text	"Mhm."
11.036	LNG	transcript lang.	"eng"
11.036	<i>SID</i>	<i>segment identifier</i>	<i>"3"</i>
11.036	TRN	transcript text	"Hm."
11.036	LNG	transcript lang.	"eng"
11.036	<i>SID</i>	<i>segment identifier</i>	<i>"4"</i>
11.036	TRN	transcript text	"Instead of saying I will or I won't..."
11.036	LNG	transcript lang.	"eng"
11.036	<i>SID</i>	<i>segment identifier</i>	<i>"5"</i>
11.036	TRN	transcript text	"I don't know."
11.036	LNG	transcript lang.	"eng"
11.036	<i>SID</i>	<i>segment identifier</i>	<i>"6"</i>
11.036	TRN	transcript text	"Okay."
11.036	LNG	transcript lang.	"eng"
11.036	<i>SID</i>	<i>segment identifier</i>	<i>"7"</i>
11.036	TRN	transcript text	"Mhm."
11.036	LNG	transcript lang.	"eng"
11.036	<i>SID</i>	<i>segment identifier</i>	<i>"8"</i>
11.036	TRN	transcript text	"People are always bad with _R _S _V _P."
11.036	LNG	transcript lang.	"eng"
11.036	<i>SID</i>	<i>segment identifier</i>	<i>"9"</i>
11.036	TRN	transcript text	"Most people do not respond to _R _S _V _P."
11.036	LNG	transcript lang.	"eng"
11.036	<i>SID</i>	<i>segment identifier</i>	<i>"10"</i>
11.036	TRN	transcript text	"Oh no."
11.036	LNG	transcript lang.	"eng"
11.036	<i>SID</i>	<i>segment identifier</i>	<i>"11"</i>
11.036	TRN	transcript text	"Anyway."
11.036	LNG	transcript lang.	"eng"
11.036	<i>SID</i>	<i>segment identifier</i>	<i>"12"</i>

Field No.	Mnemonic	Type-11 Content Description	Character
11.036	TRK	track and channel number list	"1"
11.036	LNG	transcript lang.	"eng"
11.036	SID	segment identifier	"13"
11.036	TRN	transcript text	"But I'd go ahead and count them in because."
11.036	LNG	transcript lang.	"eng"
11.036	SID	segment identifier	"14"
11.036	TRN	transcript text	"You never know."
11.036	LNG	transcript lang.	"eng"
11.036	SID	segment identifier	"15"
11.036	TRN	transcript text	"Just in case they change their mind."
11.036	LNG	transcript lang.	"eng"
11.036	SID	segment identifier	"16"
11.036	TRN	transcript text	"Yeah."
11.036	LNG	transcript lang.	"eng"
11.036	SID	segment identifier	"17"
11.036	TRN	transcript text	"It is nice that they do let you know."
11.036	LNG	transcript lang.	"eng"
11.036	SID	segment identifier	"18"
11.036	TRN	transcript text	"Yeah."
11.036	LNG	transcript lang.	"eng"
11.036	SID	segment identifier	"19"
11.036	TRN	transcript text	"But"
11.036	LNG	transcript lang.	"eng"
11.036	SID	segment identifier	"20"
11.036	TRN	transcript text	"people generally do not respond to"
11.036	LNG	transcript lang.	"eng"
11.036	SID	segment identifier	"21"
11.036	TRN	transcript text	"The nice thing about bringing food"
11.036	LNG	transcript lang.	"eng"
11.036	SID	segment identifier	"22"
11.036	TRN	transcript text	"Yeah it's true. "
11.036	LNG	transcript lang.	"eng"
11.036	SID	segment identifier	"23"
11.036	TRN	transcript text	"If everybody's bringing something..."
11.036	LNG	transcript lang.	"eng"
11.036	SID	segment identifier	"24"
11.036	TRN	transcript text	"Yeah."
11.036	LNG	transcript lang.	"eng"
11.036	SID	segment identifier	"25"
11.036	TRN	transcript text	"Yeah."
11.036	LNG	transcript lang.	"eng"
11.036	SID	segment identifier	"26"
11.036	TRN	transcript text	"That's true."
11.036	LNG	transcript lang.	"eng"
11.036	SID	segment identifier	"27"
11.036	TRN	transcript text	"Oh, if we do cater it would be..."
11.036	LNG	transcript lang.	"eng"
11.036	SID	segment identifier	"28"
11.036	TRN	transcript text	"Yes."
11.036	LNG	transcript lang.	"eng"
11.036	SID	segment identifier	"29"
11.036	TRN	transcript text	"And make sure they're there. So maybe..."

Field No.	Mnemonic	Type-11 Content Description	Character
11.036	LNG	transcript lang.	“eng”
11.036	SID	segment identifier	“30”
11.036	TRN	transcript text	“Yeah.”
11.036	LNG	transcript lang.	“eng”
11.036	SID	segment identifier	“31”
11.036	TRN	transcript text	“Which makes me think should we make a list..”
11.036	LNG	transcript lang.	“eng”
11.036	SID	segment identifier	“32”
11.036	TRN	transcript text	“and I guess we can’t say”
11.036	LNG	transcript lang.	“eng”
11.036	SID	segment identifier	“33”
11.036	TRN	transcript text	“you know you have to bring this, but”
11.036	LNG	transcript lang.	“eng”
11.036	SID	segment identifier	“34”
11.036	TRN	transcript text	“Yeah.”
11.036	LNG	transcript lang.	“eng”
11.036	SID	segment identifier	“35”
11.036	TRN	transcript text	“Yeah.”
11.036	LNG	transcript lang.	“eng”
11.036	SID	segment identifier	“36”
11.036	TRN	transcript text	“maybe”
11.036	LNG	transcript lang.	“eng”
11.036	SID	segment identifier	“37”
11.036	TRN	transcript text	“We just have a recommended uh”
11.036	LNG	transcript lang.	“eng”
11.036	SID	segment identifier	“38”
11.036	TRN	transcript text	“like a main dish or, like they do when... ”
11.036	LNG	transcript lang.	“eng”
11.036	SID	segment identifier	“39”
11.036	TRN	transcript text	“category.”
11.036	LNG	transcript lang.	“eng”
11.036	SID	segment identifier	“40”
11.036	TRN	transcript text	“Or we can write on the invitation that...”
11.036	LNG	transcript lang.	“eng”
11.036	SID	segment identifier	“41”
11.036	TRN	transcript text	“Yeah, that’s what I was thinking.”
11.036	LNG	transcript lang.	“eng”
11.036	SID	segment identifier	“42”
11.036	TRN	transcript text	“Mhm.”
11.036	LNG	transcript lang.	“eng”
11.036	SID	segment identifier	“43”
11.036	TRN	transcript text	“That’s true.”
11.036	LNG	transcript lang.	“eng”
11.036	SID	segment identifier	“44”
11.036	TRN	transcript text	“So then maybe more people will be do it”
11.036	LNG	transcript lang.	“eng”
11.036	SID	segment identifier	“45”
11.036	TRN	transcript text	“That they would. More %uh... ”
11.036	LNG	transcript lang.	“eng”
11.036	SID	segment identifier	“46”
11.036	TRN	transcript text	“Yeah.”
11.036	LNG	transcript lang.	“eng”
11.036	SID	segment identifier	“47”

Field No.	Mnemonic	Type-11 Content Description	Character
11.036	TRN	transcript text	“Oh that’s true and they might be...”
11.036	LNG	transcript lang.	“eng”
11.036	SID	segment identifier	“48”
11.036	TRN	transcript text	“There’s a way to put it, yeah.”
11.036	LNG	transcript lang.	“eng”
11.036	SID	segment identifier	“49”
11.036	TRN	transcript text	“Yeah I mean there’s a nice way to word it...”
11.036	LNG	transcript lang.	“eng”
11.036	SID	segment identifier	“50”
11.036	TRN	transcript text	“Let’s go.”
11.036	LNG	transcript lang.	“eng”
11.036	SID	segment identifier	“51”
11.036	TRN	transcript text	“Yeah.”
11.036	LNG	transcript lang.	“eng”
11.036	SID	segment identifier	“52”
11.036	TRN	transcript text	“I’ve seen it done.”
11.036	LNG	transcript lang.	“eng”
11.036	SID	segment identifier	“53”
11.036	TRN	transcript text	“Yeah that’s a good idea.”
11.036	LNG	transcript lang.	“eng”
11.036	SID	segment identifier	“54”
11.036	TRN	transcript text	“Where basically if you don’t _R_S_V_P...”
11.036	LNG	transcript lang.	“eng”
11.036	SID	segment identifier	“55”
11.036	TRN	transcript text	“Mhm.”
11.036	LNG	transcript lang.	“eng”
11.036	SID	segment identifier	“56”
11.036	TRN	transcript text	“Right.”
11.036	LNG	transcript lang.	“eng”
11.036	SID	segment identifier	“57”
11.036	TRN	transcript text	“Right exactly.”
11.036	LNG	transcript lang.	“eng”
11.036	SID	segment identifier	“58”
11.036	TRN	transcript text	“So. {laugh”
11.036	LNG	transcript lang.	“eng”
11.036	SID	segment identifier	“59”
11.036	TRN	transcript text	“Well, come on ^Rachel. {laugh {lipsmack”
11.036	LNG	transcript lang.	“eng”
11.036	SID	segment identifier	“60”
11.036	TRN	transcript text	“Well I mean that’s how it”
11.036	LNG	transcript lang.	“eng”
11.036	SID	segment identifier	“61”
11.036	TRN	transcript text	“So how”
11.036	LNG	transcript lang.	“eng”
11.036	SID	segment identifier	“62”
11.036	TRN	transcript text	“That’s very good let’s go with that. ”
11.036	LNG	transcript lang.	“eng”
11.036	SID	segment identifier	“63”
11.036	TRN	transcript text	“Yeah.”
11.036	LNG	transcript lang.	“eng”
11.036	SID	segment identifier	“64”
11.036	TRN	transcript text	“it makes people”
11.036	LNG	transcript lang.	“eng”

Field No.	Mnemonic	Type-11 Content Description	Character
11.036	SID	segment identifier	"65"
11.036	TRN	transcript text	"I know."
11.036	LNG	transcript lang.	"eng"
11.036	SID	segment identifier	"66"
11.036	TRN	transcript text	"Yeah."
11.036	LNG	transcript lang.	"eng"
11.036	SID	segment identifier	"67"
11.036	TRN	transcript text	"So how far ahead will we want to mail... "
11.036	LNG	transcript lang.	"eng"
11.036	SID	segment identifier	"68"
11.036	TRN	transcript text	"_R_S_V_P."
11.036	LNG	transcript lang.	"eng"
11.036	SID	segment identifier	"69"
11.036	TRN	transcript text	"At least, %um because you're hitting... "
11.036	LNG	transcript lang.	"eng"
11.036	SID	segment identifier	"70"
11.036	TRN	transcript text	"A month?"
11.036	LNG	transcript lang.	"eng"
11.036	SID	segment identifier	"71"
11.036	TRN	transcript text	"A month"
11.036	LNG	transcript lang.	"eng"
11.037	SCC	SEG. SPEAKER CHAR.	None
11.037	SIL	segment identifier list	"0"
11.037	IMP	impairment level	0
11.037	DSL	dominant spoken lang. code	"eng"
11.037	LPS	lang. proficiency	"9"
11.037	STY	speech style code	"7"
11.037	INT	intelligibility scale code	"9"
11.037	FDC	familiarity code	"4"
11.037	EMC	emotional state code	"3"
11.037	SIL	segment identifier list	"1"
11.037	SPI	speaker identifier	"NIST MR Spk 255"
11.037	SIL	segment identifier list	"2"
11.037	SPI	speaker identifier	"NIST MR Spk 254"
11.037	SIL	segment identifier list	"3"
11.037	SPI	speaker identifier	"NIST MR Spk 253"
11.037	SIL	segment identifier list	"4"
11.037	SPI	speaker identifier	"NIST MR Spk 255"
11.037	SIL	segment identifier list	"5"
11.037	SPI	speaker identifier	"NIST MR Spk 256"
11.037	SIL	segment identifier list	"6"
11.037	SPI	speaker identifier	"NIST MR Spk 254"
11.037	SIL	segment identifier list	"7"
11.037	SPI	speaker identifier	"NIST MR Spk 254"
11.037	SIL	segment identifier list	"8"
11.037	SPI	speaker identifier	"NIST MR Spk 253"
11.037	SIL	segment identifier list	"9"
11.037	SPI	speaker identifier	"NIST MR Spk 257"
11.037	SIL	segment identifier list	"10"
11.037	SPI	speaker identifier	"NIST MR Spk 254"
11.037	SIL	segment identifier list	"11"
11.037	SPI	speaker identifier	"NIST MR Spk 255"
11.037	SIL	segment identifier list	"12"

Field No.	Mnemonic	Type-11 Content Description	Character
11.037	SPI	speaker identifier	"NIST MR Spk 256"
11.037	SIL	segment identifier list	"13"
11.037	SPI	speaker identifier	"NIST MR Spk 257"
11.037	SIL	segment identifier list	"14"
11.037	SPI	speaker identifier	"NIST MR Spk 256"
11.037	SIL	segment identifier list	"15"
11.037	SPI	speaker identifier	"NIST MR Spk 255"
11.037	SIL	segment identifier list	"16"
11.037	SPI	speaker identifier	"NIST MR Spk 254"
11.037	SIL	segment identifier list	"17"
11.037	SPI	speaker identifier	"NIST MR Spk 257"
11.037	SIL	segment identifier list	"18"
11.037	SPI	speaker identifier	"NIST MR Spk 255"
11.037	SIL	segment identifier list	"19"
11.037	SPI	speaker identifier	"NIST MR Spk 257"
11.037	SIL	segment identifier list	"20"
11.037	SPI	speaker identifier	"NIST MR Spk 257"
11.037	SIL	segment identifier list	"21"
11.037	SPI	speaker identifier	"NIST MR Spk 255"
11.037	SIL	segment identifier list	"22"
11.037	SPI	speaker identifier	"NIST MR Spk 256"
11.037	SIL	segment identifier list	"23"
11.037	SPI	speaker identifier	"NIST MR Spk 255"
11.037	SIL	segment identifier list	"24"
11.037	SPI	speaker identifier	"NIST MR Spk 254"
11.037	SIL	segment identifier list	"25"
11.037	SPI	speaker identifier	"NIST MR Spk 254"
11.037	SIL	segment identifier list	"26"
11.037	SPI	speaker identifier	"NIST MR Spk 256"
11.037	SIL	segment identifier list	"27"
11.037	SPI	speaker identifier	"NIST MR Spk 257"
11.037	SIL	segment identifier list	"28"
11.037	SPI	speaker identifier	"NIST MR Spk 255"
11.037	SIL	segment identifier list	"29"
11.037	SPI	speaker identifier	"NIST MR Spk 256"
11.037	SIL	segment identifier list	"30"
11.037	SPI	speaker identifier	"NIST MR Spk 257"
11.037	SIL	segment identifier list	"31"
11.037	SPI	speaker identifier	"NIST MR Spk 256"
11.037	SIL	segment identifier list	"32"
11.037	SPI	speaker identifier	"NIST MR Spk 256"
11.037	SIL	segment identifier list	"33"
11.037	SPI	speaker identifier	"NIST MR Spk 256"
11.037	SIL	segment identifier list	"34"
11.037	SPI	speaker identifier	"NIST MR Spk 257"
11.037	SIL	segment identifier list	"35"
11.037	SPI	speaker identifier	"NIST MR Spk 254"
11.037	SIL	segment identifier list	"36"
11.037	SPI	speaker identifier	"NIST MR Spk 256"
11.037	SIL	segment identifier list	"37"
11.037	SPI	speaker identifier	"NIST MR Spk 255"
11.037	SIL	segment identifier list	"38"
11.037	SPI	speaker identifier	"NIST MR Spk 256"

Field No.	Mnemonic	Type-11 Content Description	Character
11.037	SIL	segment identifier list	"39"
11.037	SPI	speaker identifier	"NIST MR Spk 255"
11.037	SIL	segment identifier list	"40"
11.037	SPI	speaker identifier	"NIST MR Spk 254"
11.037	SIL	segment identifier list	"41"
11.037	SPI	speaker identifier	"NIST MR Spk 257"
11.037	SIL	segment identifier list	"42"
11.037	SPI	speaker identifier	"NIST MR Spk 256"
11.037	SIL	segment identifier list	"43"
11.037	SPI	speaker identifier	"NIST MR Spk 256"
11.037	SIL	segment identifier list	"44"
11.037	SPI	speaker identifier	"NIST MR Spk 254"
11.037	SIL	segment identifier list	"45"
11.037	SPI	speaker identifier	"NIST MR Spk 255"
11.037	SIL	segment identifier list	"46"
11.037	SPI	speaker identifier	"NIST MR Spk 254"
11.037	SIL	segment identifier list	"47"
11.037	SPI	speaker identifier	"NIST MR Spk 256"
11.037	SIL	segment identifier list	"48"
11.037	SPI	speaker identifier	"NIST MR Spk 253"
11.037	SIL	segment identifier list	"49"
11.037	SPI	speaker identifier	"NIST MR Spk 254"
11.037	SIL	segment identifier list	"50"
11.037	SPI	speaker identifier	"NIST MR Spk 256"
11.037	SIL	segment identifier list	"51"
11.037	SPI	speaker identifier	"NIST MR Spk 256"
11.037	SIL	segment identifier list	"52"
11.037	SPI	speaker identifier	"NIST MR Spk 253"
11.037	SIL	segment identifier list	"53"
11.037	SPI	speaker identifier	"NIST MR Spk 256"
11.037	SIL	segment identifier list	"54"
11.037	SPI	speaker identifier	"NIST MR Spk 253"
11.037	SIL	segment identifier list	"55"
11.037	SPI	speaker identifier	"NIST MR Spk 257"
11.037	SIL	segment identifier list	"56"
11.037	SPI	speaker identifier	"NIST MR Spk 254"
11.037	SIL	segment identifier list	"57"
11.037	SPI	speaker identifier	"NIST MR Spk 256"
11.037	SIL	segment identifier list	"58"
11.037	SPI	speaker identifier	"NIST MR Spk 253"
11.037	SIL	segment identifier list	"59"
11.037	SPI	speaker identifier	"NIST MR Spk 257"
11.037	SIL	segment identifier list	"60"
11.037	SPI	speaker identifier	"NIST MR Spk 253"
11.037	SIL	segment identifier list	"61"
11.037	SPI	speaker identifier	"NIST MR Spk 255"
11.037	SIL	segment identifier list	"62"
11.037	SPI	speaker identifier	"NIST MR Spk 256"
11.037	SIL	segment identifier list	"63"
11.037	SPI	speaker identifier	"NIST MR Spk 254"
11.037	SIL	segment identifier list	"64"
11.037	SPI	speaker identifier	"NIST MR Spk 253"
11.037	SIL	segment identifier list	"65"

Field No.	Mnemonic	Type-11 Content Description	Character
11.037	SPI	speaker identifier	"NIST MR Spk 254"
11.037	SIL	segment identifier list	"66"
11.037	SPI	speaker identifier	"NIST MR Spk 257"
11.037	SIL	segment identifier list	"67"
11.037	SPI	speaker identifier	"NIST MR Spk 255"
11.037	SIL	segment identifier list	"68"
11.037	SPI	speaker identifier	"NIST MR Spk 253"
11.037	SIL	segment identifier list	"69"
11.037	SPI	speaker identifier	"NIST MR Spk 257"
11.037	SIL	segment identifier list	"70"
11.037	SPI	speaker identifier	"NIST MR Spk 254"
11.037	SIL	segment identifier list	"71"
11.037	SPI	speaker identifier	"NIST MR Spk 256"
11.038	SCH	SEGMENT CHANNEL	None
11.039-050		RESERVED FOR FUTURE	None
11.051	COM	COMMENTS	"First Type-11 Test"
11.052-099	NONE	Reserved	None
11.100-900	UDF	USER-DEFINED FIELDS	User Defined
11.901	NONE	Reserved	None
11.902	ANN	ANNOTATION INFORMATION	None
11.902	GMT	Greenwich Mean Time	"201305201436Z"
11.902	NAV	processing algorithm name/version	"unspecified"
11.902	OWN	algorithm owner	"NIST"
11.902	PRO	process description	"Segment & cluster Speakers"
11.903-091	NONE	Reserved	None
11.992	T2C	TYPE-2 RECORD CROSS REF.	"0"
11.993	SAN	SOURCE NAME AGENCY	"NISTPDO1"
11.994	EFR	EXTERNAL FILE REFERENCE	None
11.995	ASC	ASSOCIATED CONTEXT	None

Field No.	Mnemonic	Type-11 Content Description	Character
11.996	HAS	HASH	”7c38b74448e34d2a60aa02609f9e4539d08e82be6bc339c65c8143e561a6a66c”
11.997	SOR	SOURCE REPRESENTATION	None
11.998	GEO	GEO. SAMPLE ACQ. LOC.	None
11.998	UTE	universal time entry	”200801010805Z”
11.998	LTD	latitude degree value	”39”
11.998	LTM	latitude minute value	”8”
11.998	LTS	latitude second value	”16”
11.998	LGD	longitude degree value	”-77”
11.998	LGM	longitude minute value	”13”
11.998	LGS	longitude second value	”1”

Field No.	Mnemonic	Type-11 Content Description	Character
11.999	DATA	VOICE DATA	2592046 bytes from file NIST_20080201-1405_d03_NONE_1620-1701.wav.

Matching a voice model