

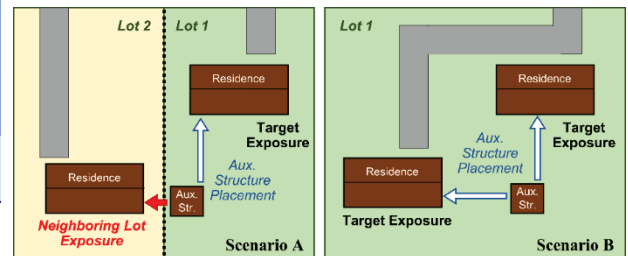
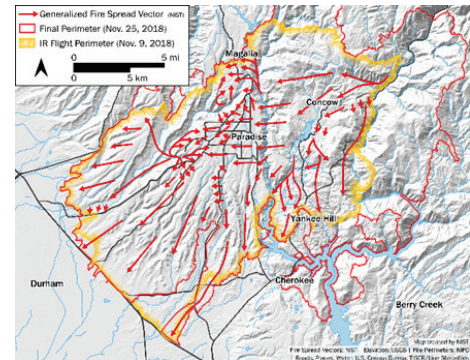
NIST WUI FIRE DAYS 2022

Research Presentations Agenda

Day 1 — July 6, Starting at 1:00 pm Eastern

Session	Time (ET)	Title
1.0	1:00 – 1:15 (15 min)	Opening Remarks – NIST Engineering Laboratory (EL) Director
1.1	1:15 – 1:45 (30 min)	Camp Fire Case Study Overview
1.2	1:45 – 2:30 (45 min)	Camp Fire – Fire Progression Timeline
	2:30 – 2:40 (10 min)	Q&A
	2:40 – 2:45 (5 min)	Break
1.3	2:45 – 2:55 (10 min)	Update on Camp Fire – NETTRA (Notification, Evacuation, Traffic, Temporary Refuge Areas) Report
1.4	2:55 – 4:10 (75 min)	WUI Structure/Parcel/Community Fire Hazard Mitigation Methodology (HMM)
	4:10 – 4:20 (10 min)	Q&A

Total Day 1: 3 h 20 min



Day 2 — July 13, Starting at 1:00 pm Eastern

Session	Time (ET)	Title
2.1	1:00 – 1:20 (20 min)	Structure Separation Experiments (SSE) Overview
2.2	1:20 – 2:05 (45 min)	SSE Phase 1 – NIST Indoor Experiments
2.3	2:05 – 2:15 (10 min)	Update on SSE Phase 1 – NIST Outdoor Experiments
	2:15 – 2:25 (10 min)	Q&A
	2:25 – 2:30 (5 min)	Break
2.4	2:30 – 2:50 (20 min)	SSE Phase 1 – IBHS Outdoor No Wind Experiments
2.5	2:50 – 3:00 (10 min)	Update on SSE Phase 1 – IBHS Cold-Flow Measurements
	3:00 – 3:10 (10 min)	Q&A
	3:10 – 3:15 (5 min)	Break
2.6	3:15 – 4:15 (60 min)	SSE Modeling
	4:15 – 4:25 (10 min)	Q&A
2.7	4:25 – 4:45 (20 min)	SSE Phase 1 – Summary

Total Day 2: 3 h 45 min



NIST WUI FIRE DAYS 2022

Research Presentations Agenda

Day 3 — July 20, Starting at 1:00 pm Eastern

Session	Time (ET)	Title
3.0	1:00 – 1:15 (15 min)	Parcel-level Hazard Mitigation Introduction
3.1	1:15 – 2:10 (55 min)	NIST Fences Research and Findings
	2:10 – 2:15 (5 min)	Break
3.2	2:15 – 2:50 (35 min)	NIST Emberometer Research
3.3	2:50 – 3:25 (35 min)	2012 Waldo Fire (CO) Case Study
	3:25 – 3:35 (10 min)	Q&A
	3:35 – 3:40 (5 min)	Break
3.4	3:40 – 4:00 (20 min)	HMM WUI Structure/Parcel/Community Design Considerations
3.5	4:00 – 4:10 (10 min)	Closing Remarks – NIST EL Director



Total Day 3: 3 h 10 min

Day 4 — July 27, Starting at 1:00 pm Eastern

NIST Grantees Presentations

Session	Time (ET)	Title
4.0	1:00 – 1:10 (10 min)	WUI Fire-related NIST Grants Introduction
4.1	1:10 – 1:55 (45 min)	WUI-NITY 3: Multi-method traffic movement data collection for WUI fire evacuation modeling – <i>Prof. Steve Gwynne Ph.D., Lund University</i>
	1:55 – 2:05 (10 min)	Q&A
	2:05 – 2:10 (5 min)	Break
4.2	2:10 – 2:55 (45 min)	Developing AI-Based Wildfire Evacuation Behavior (AI-WEB) model – <i>Prof. Xilei Zhao Ph.D., University of Florida</i>
	2:55 – 3:05 (10 min)	Q&A
	3:05 – 3:10 (5 min)	Break
4.3	3:10 – 3:55 (45 min)	Measuring source terms of firebrand generation numbers for physics-based models – <i>Prof. David Blunck Ph.D., Oregon State University</i>
	3:55 – 4:05 (10 min)	Q&A
	4:05 – 4:10 (5 min)	Break
4.4	4:10 – 4:55 (45 min)	Quantification of firebrand production from WUI fuels for model development – <i>Prof. Michael Gollner Ph.D., the University of California, Berkeley</i>
	4:55 – 5:05 (10 min)	Q&A
4.5	5:05 – 5:15 (10 min)	Closing Remarks

Total Day 4: 4 h 15 min